

# SKETCHING AND PLANT IDENTIFICATION

UCLA EXTENSION

SPRING 2022

INSTRUCTOR: DAVID W SQUIRES

Student: Grace Pan

## Course Description:

Students participate in four (4) all day site visits to observe and sketch 4 - 5 plant species from those locations. The spring quarter students visited:

Meeting 1: Via Zoom: Nursery Stock, small plant containers

Meeting 2: Getty Center: Trees

Meeting 3: Devil Mountain Specimen Yard: Trees

Meeting 4: Instructors Project Location: Trees and under story composition

Students learn sketching technique with pencil. The instructor guides observation of form, detail, texture, scale and proportion; with the emphasis on observation and seeing. While the students are developing their sketches, the instructor leads conversation centered around the subject plant species. The conversation ranges from planting design, growing conditions, plant specifications, acquisitions, costs, construction site management and equipment needed to plant.



This was such a gem of a course. I enrolled, expecting to improve my sketching technique (which I did, thanks to David's patient instruction!), but I learned so much beyond that. David imparted unto us years of invaluable in-field experience and gave us an sneak peak into the world of high-caliber residential design -- of what it means to truly love and to be involved in a project. His passion for landscape architecture is contagious and inspiring. Thank you, David, for your time and dedication. This was such a special experience!

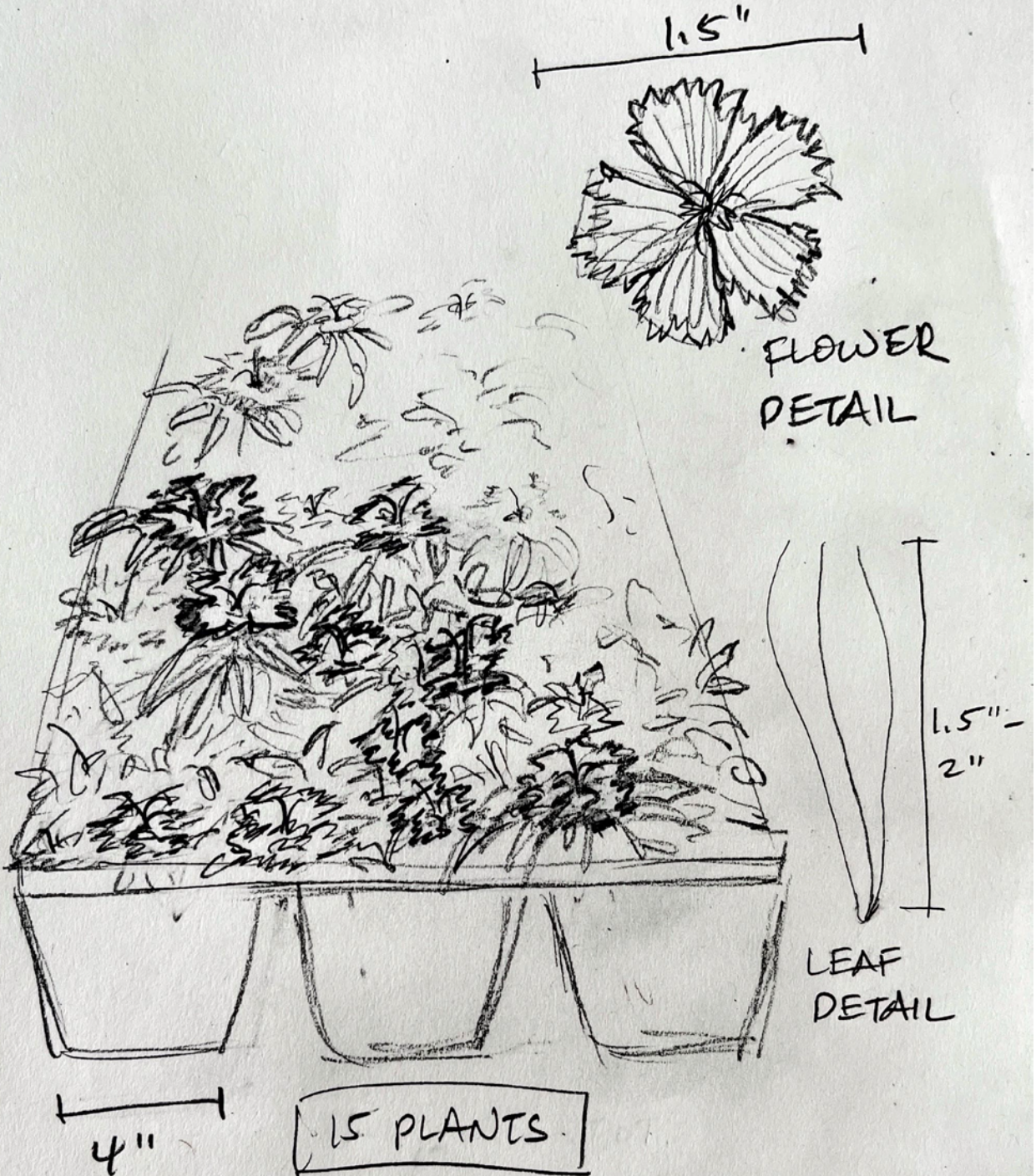
Sketches are encased in the pages beyond.

# Meeting #1

Zoom

CARNATION

Dianthus caryophyllus

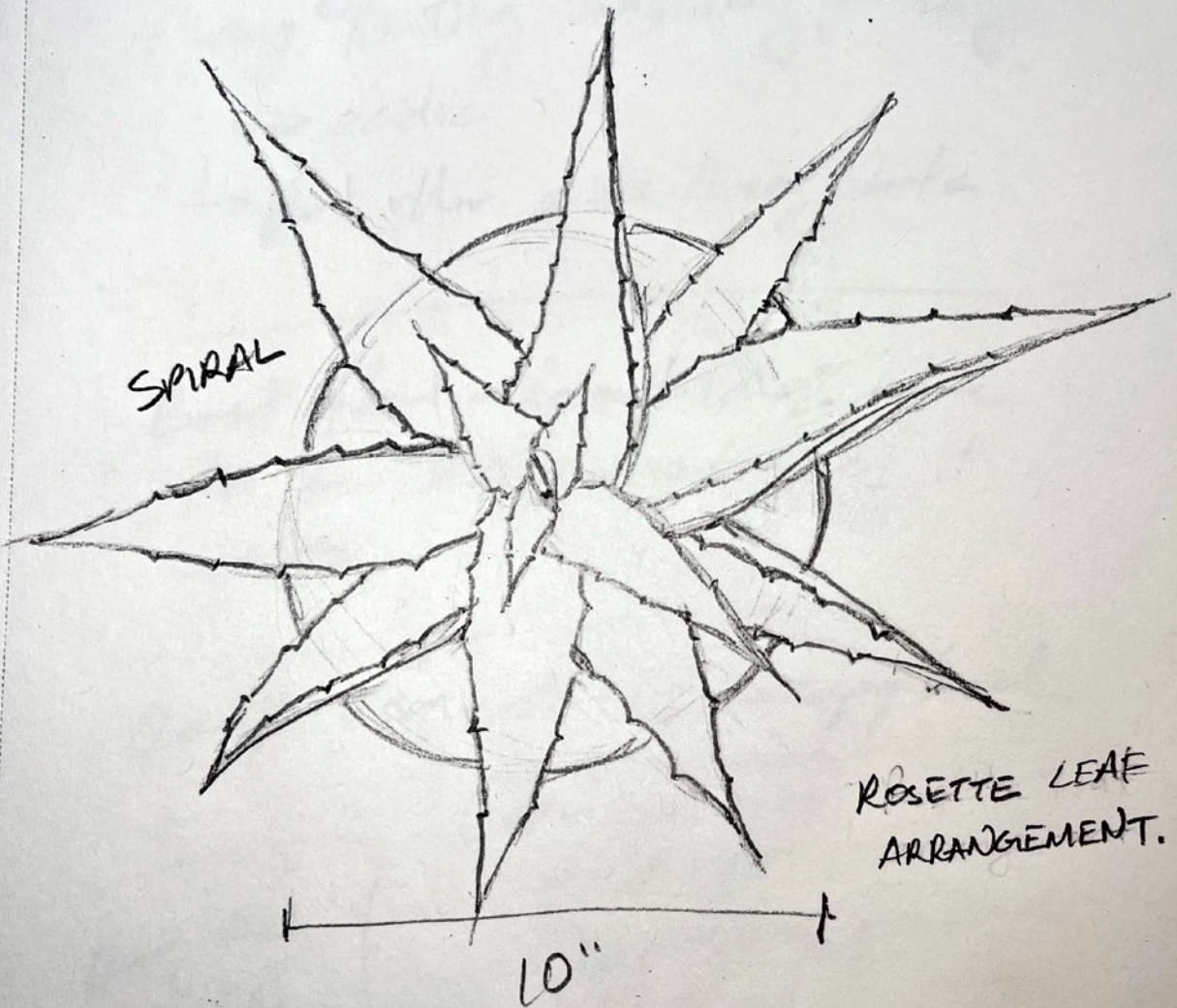


CLASS #1

GRACE PAN APRIL 3, 2022

Aloe vera, Medicinal Aloe

18"

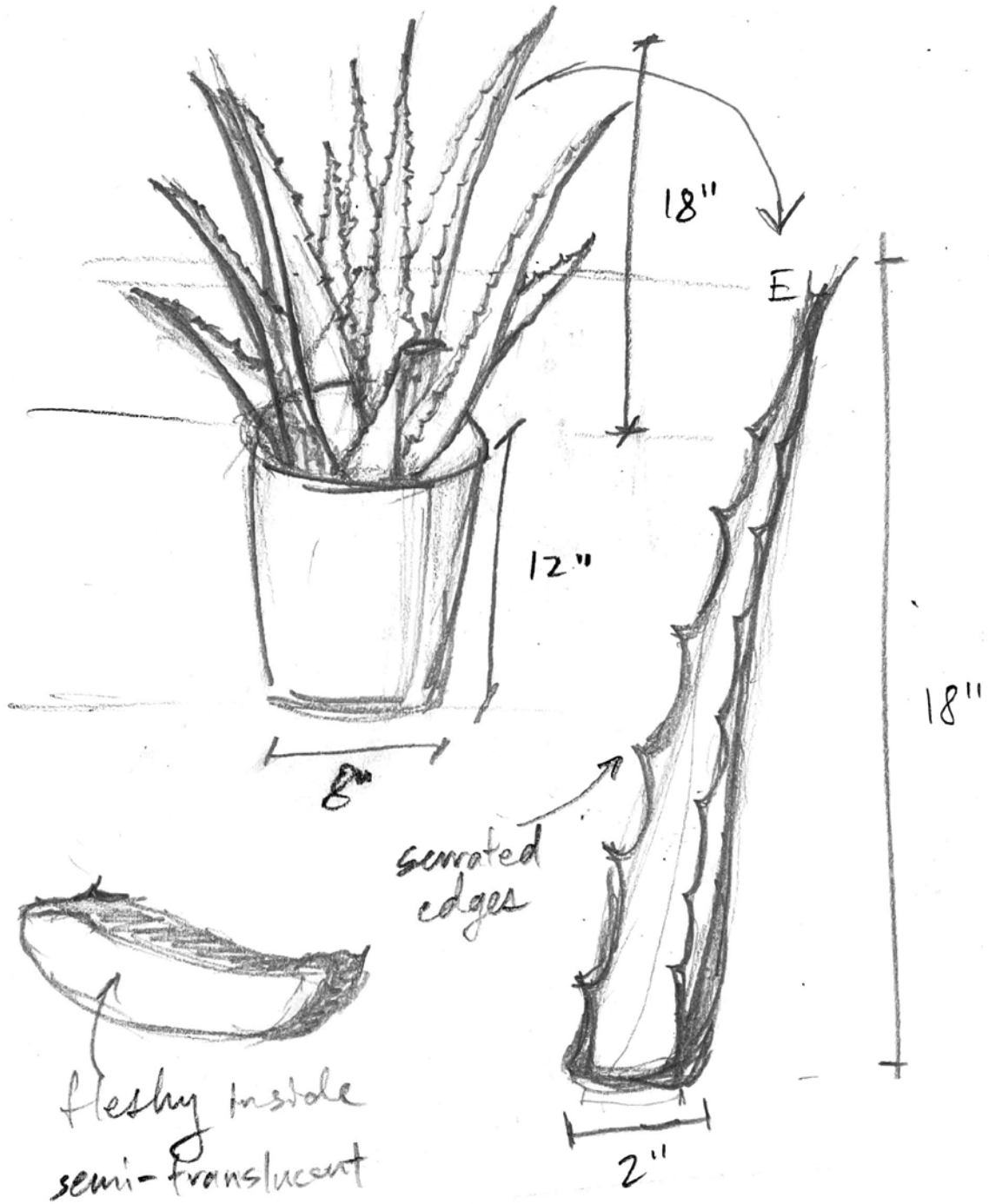


CLASS #1

GRACE PAN

APRIL 3, 2022

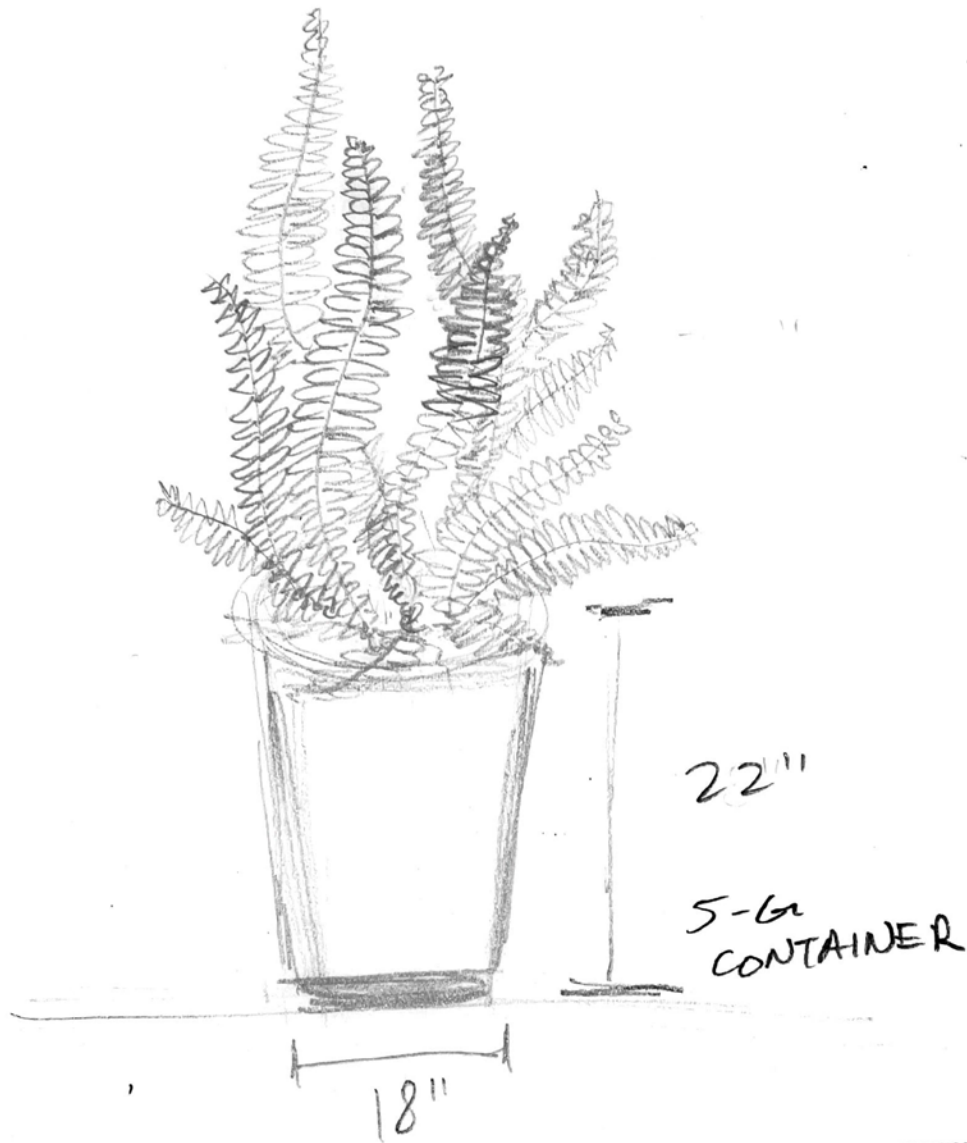
Aloe vera, Medicinal Aloe



CLASS #1

GRACE PAN APRIL 3, 2022

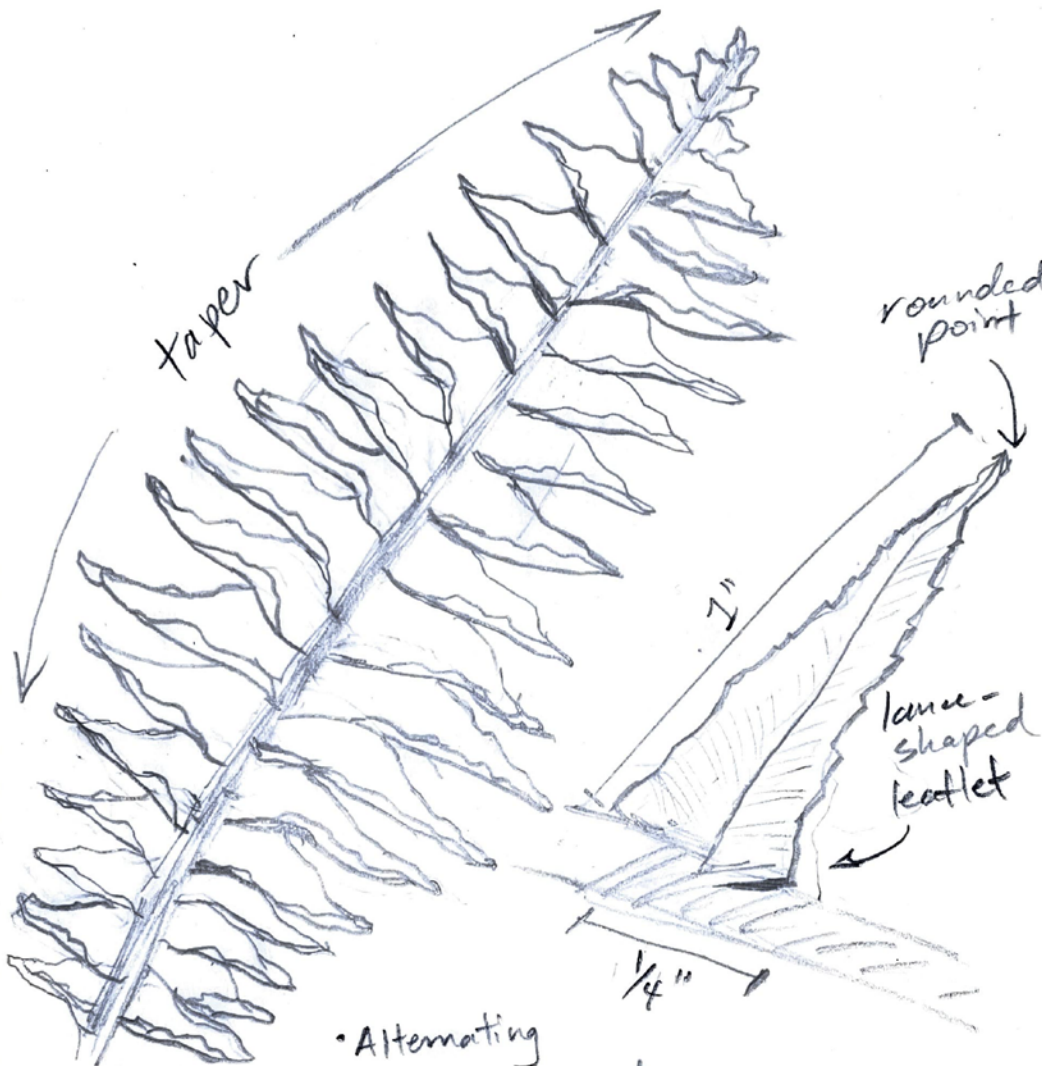
Nephrolepis exaltata,  
Sword Fern



---

CLASS #1  
GRACE PAN APRIL 3, 2022

Nephrolepis exaltata, Sword Fern



- Alternating leaf arrangement
- stem woody @ bottom, fleshy @ top.

CLASS #1

GRACE PAN APRIL 3, 2022

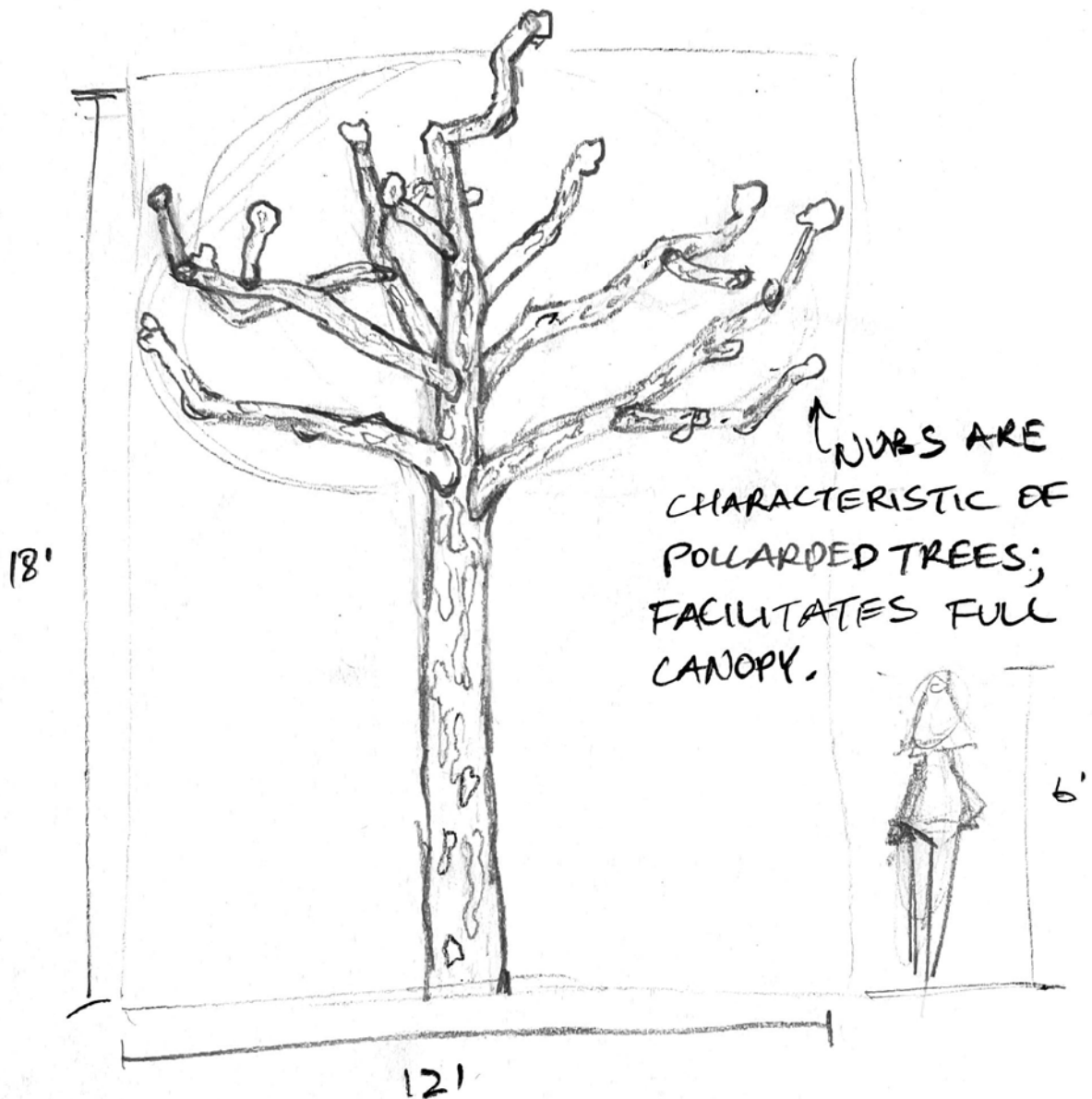
# Meeting #2

## J. Paul Getty Museum



# POLLARDED SYCAMORE

- HEIGHT: 18'
- TRUNK WIDTH: 8"
- WIDTH: 12'
- GRND → CANOPY: 8'



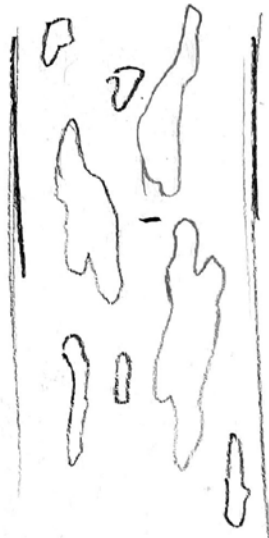
Platanus racemosa

GETTY MUSEUM

GRACE PAN APRIL 15, 2022

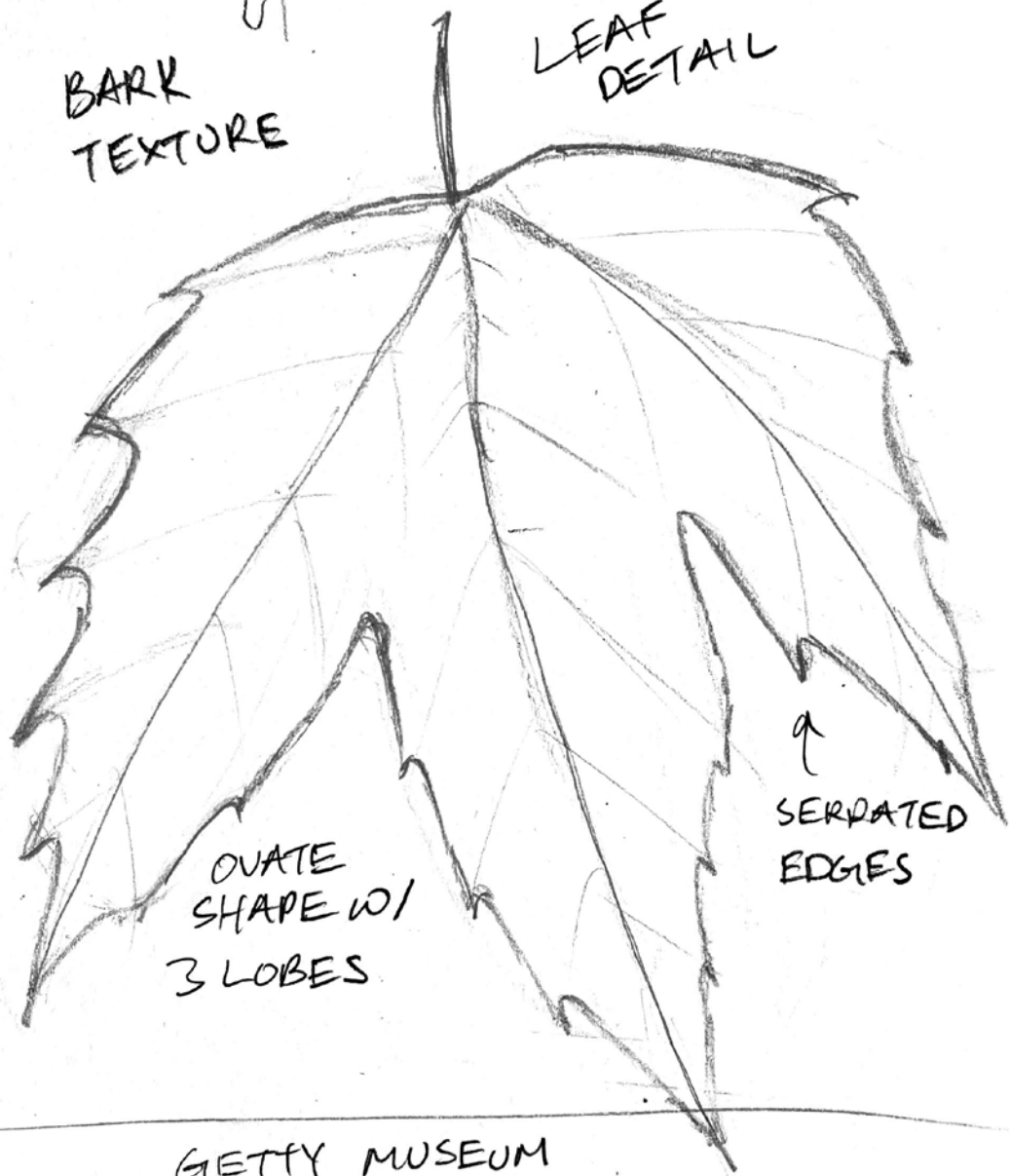
Platanus racemosa

AM



BARK  
TEXTURE

LEAF  
DETAIL



OVATE  
SHAPE W/  
3 LOBES

↑  
SERPATED  
EDGES

GETTY MUSEUM

GRACE PAN

APRIL 15, 2022

MONTEZUMA BALD CYPRESS

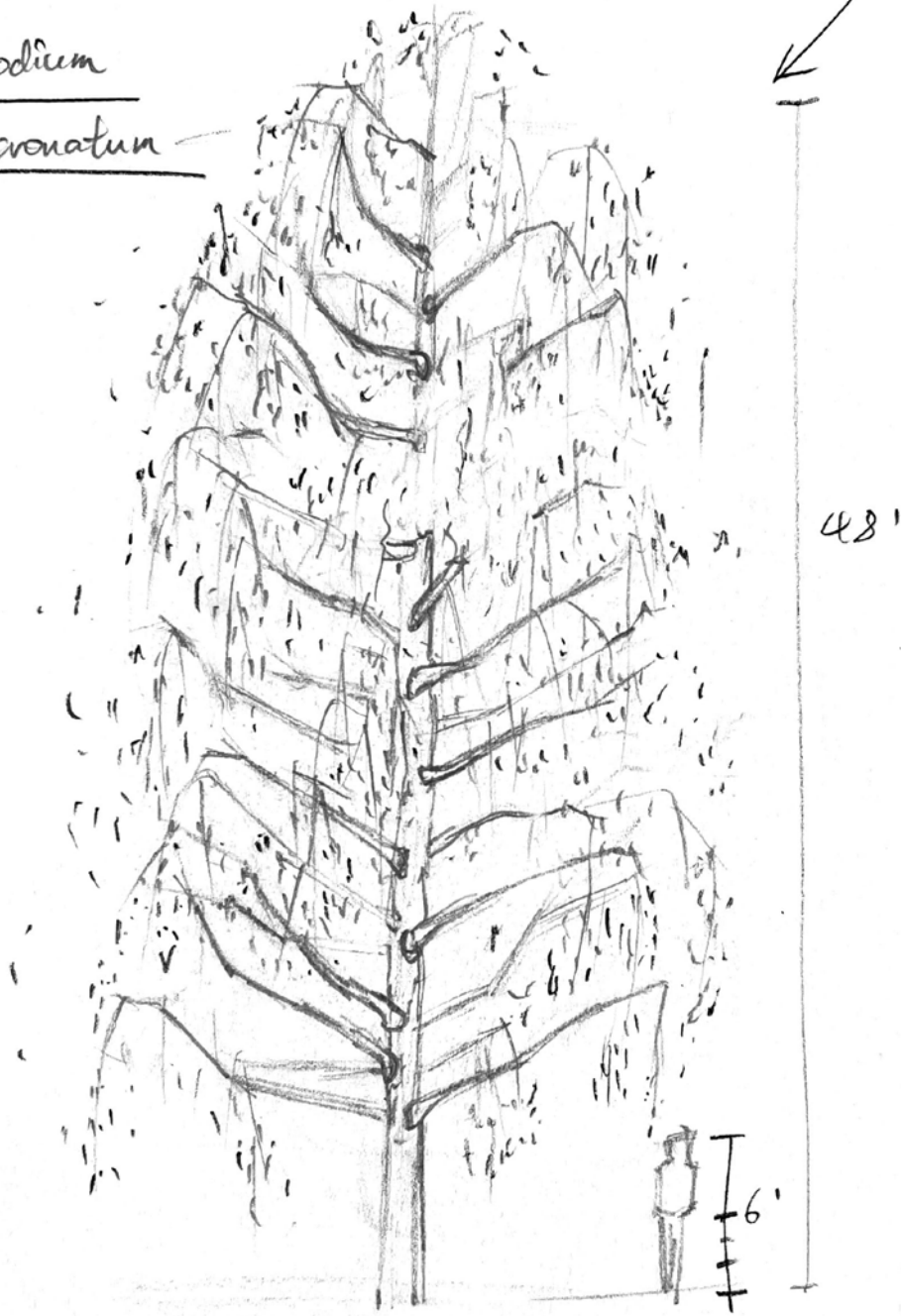
• HEIGHT: 48'

• GRND → CANOPY: 6'

• WIDTH: 18'

• TRUNK DIA: 14"

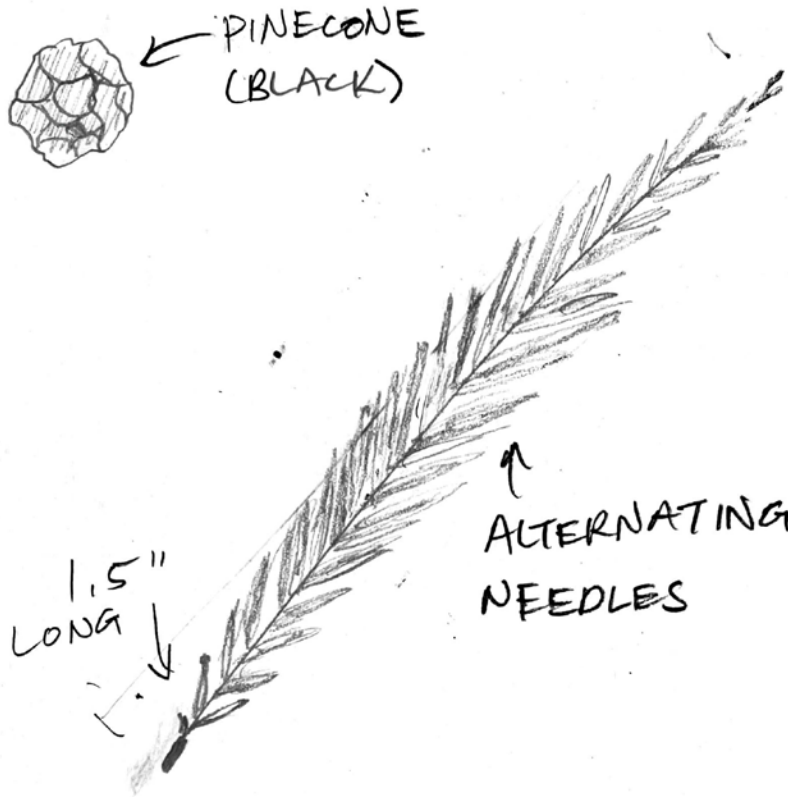
Taxodium  
mucronatum



GETTY MUSEUM  
GRACE PAN APRIL 15, 2022

MONTEZUMA BALD CYPRESS DETAIL DRAWINGS

Taxodium mucronatum



GETTY MUSEUM

GRACE PAN

APRIL 15, 2022

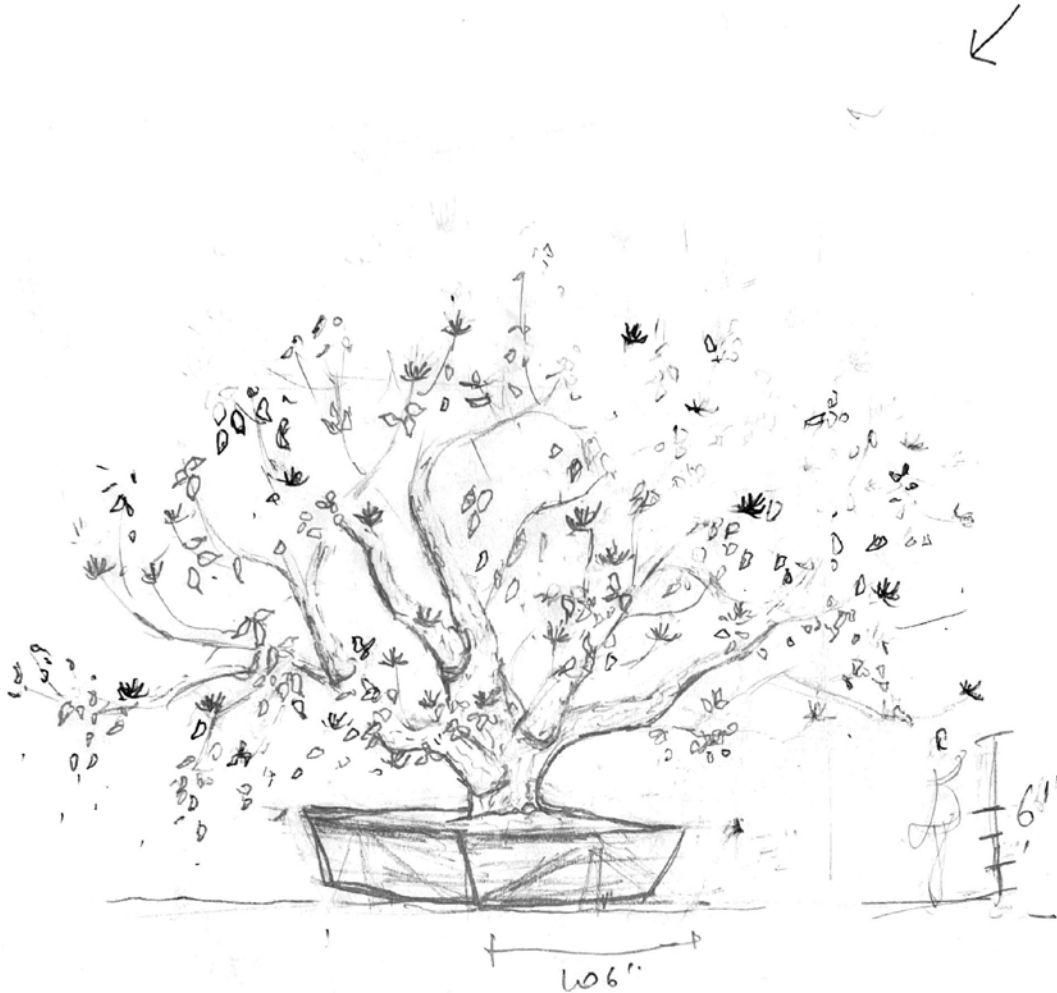
## Meeting #3

### Devil Mtn. Specimen Yard

LEAF-TRIFOLIA → 3 LEAFLETS

SEEDS ON FLOWER VERY POISONOUS

FALL COLOR



WIDTH: 21'

TRUNK WIDTH: 28"

LEAF: 5' x 2.5"

HEIGHT: 16'

FLOWER WIDTH: 5-6"

FLOWER HEIGHT: 3-4"

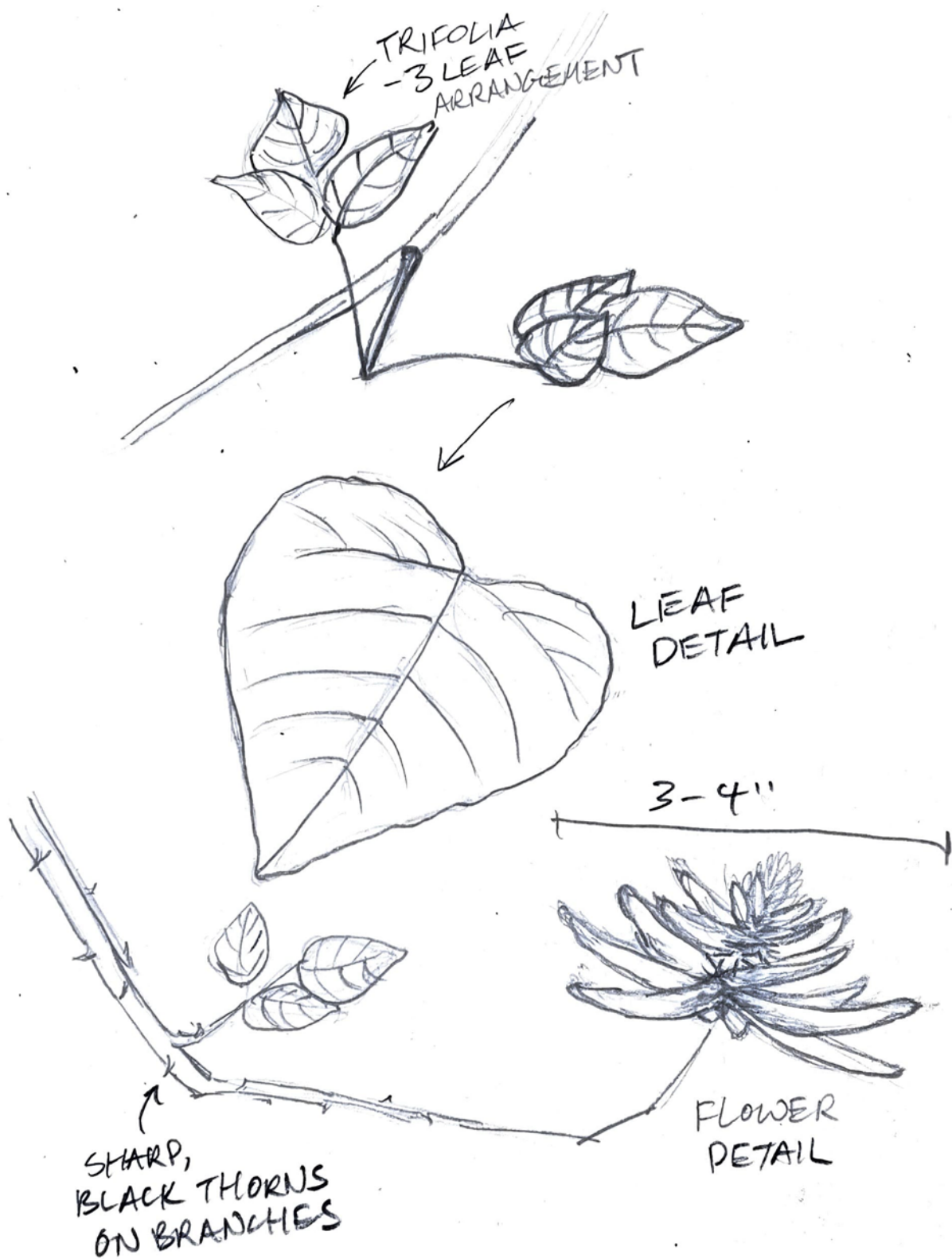
Erythrina corralloides - MEXICAN CORAL TREE

96" Box

DEAL MTN. SPECIMEN YARD.

GRACE PAN

MAY 15, 2022



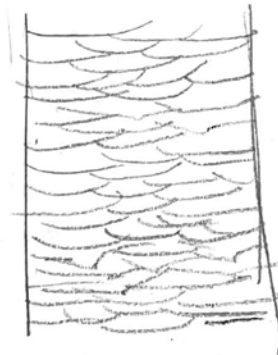
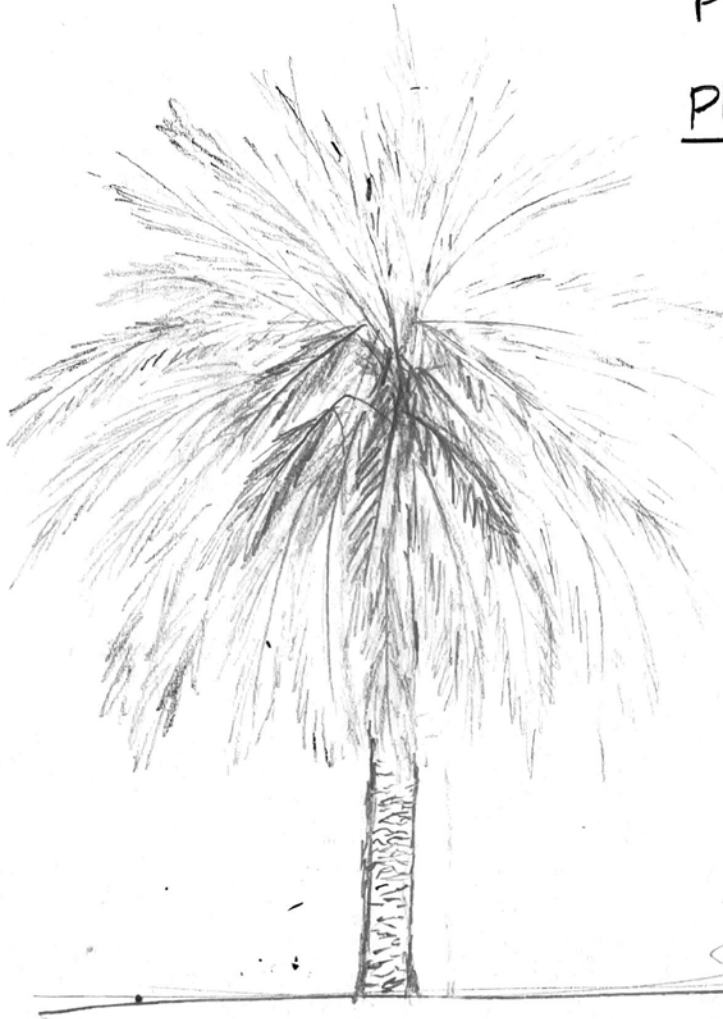
MEXICAN CORAL TREE  
DEUL MTN. SPECIMEN YARD  
GRACE PAN MAY 15, 2022

\$500/yr.

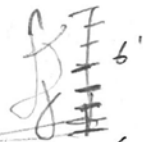
12" LONG ON LONGEST  
LEAFLET

CANARY ISLAND  
PALM

Phoenix canariensis



TRUNK  
DETAIL



GL

CLOTS OF  
MAINT-  
ENANCE!)

MEASUREMENTS:

WIDTH (TRUNK): 2 1/4" WIDTH: 20"

HEIGHT: 30'

BOT. → FRODS: 10'

CANARY DEVIL MTR. SPECIMEN YARD

GRACE PAN MAY 15, 2022



- LIVES FOR THOUSANDS OF YEARS
- TALLEST TREE ON EARTH
- CLIMATE CHANGE HEROES!



MEASUREMENTS:

- HEIGHT: 30'
- BOX WIDTH: 8.5'
- WIDTH: 12'
- BOX HEIGHT: 3'

Sequoia sempervirens - REDWOOD

DEVIL MTN. SPECIMEN YARD

• GRACE PAN • MAY 15, 2022

\$21,500

30 y/o

ROOTS MAKE GROUND (DRIPLINE)

DENSE & HARD

COMPOUND PINNATE LEAF



BOX: 130" x 53"

TREE:

HEIGHT 24'

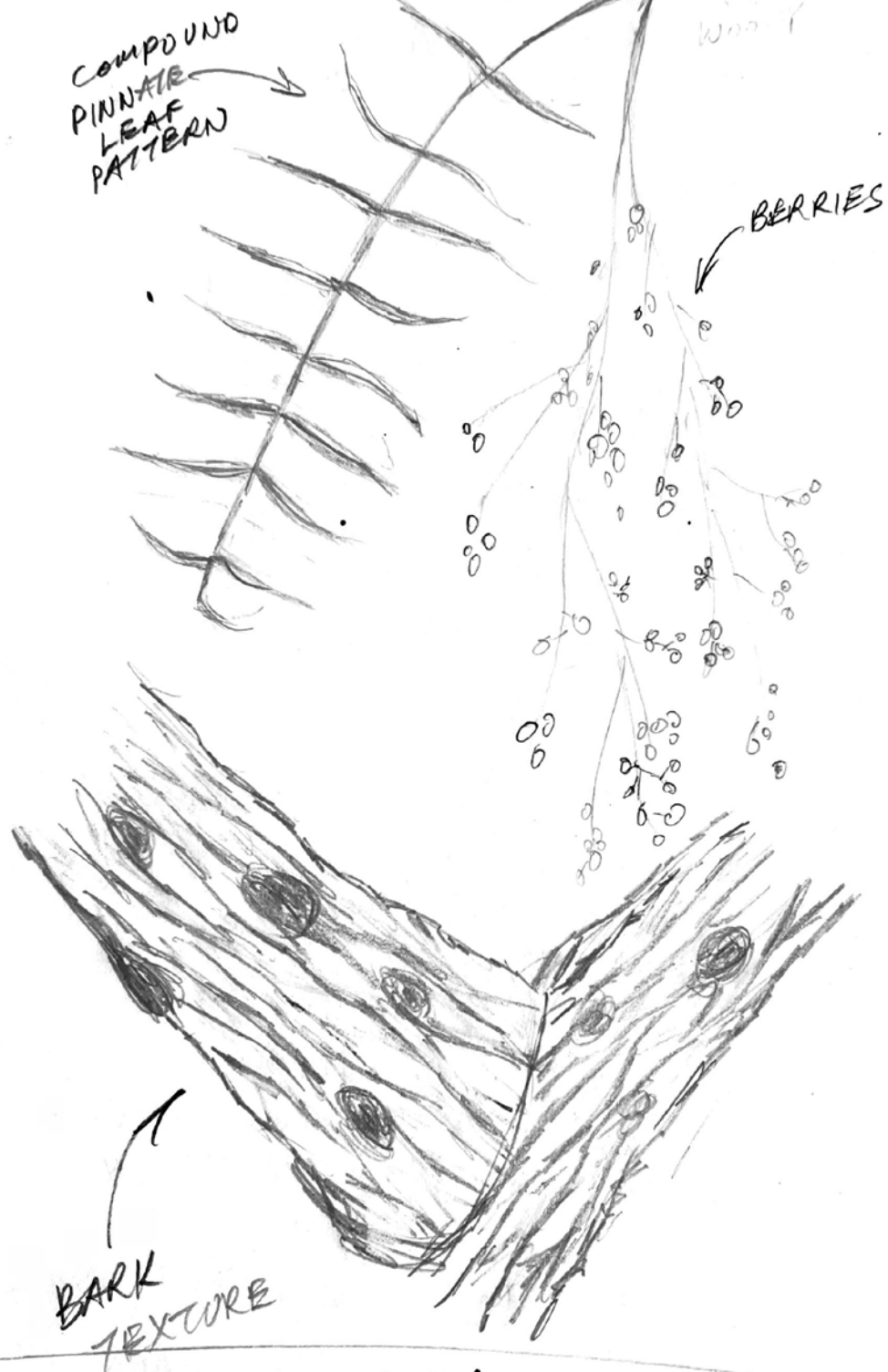
WIDTH 24'

Schinus molle - PERUVIAN PEPPER

DEVIL MTN. SPECIMEN YARD

GRACE PAN MAY 15, 2022

Schinensis molle, PERUVIAN PEPPER TREE



DEVIL MTN  
SPECIMEN YARD

GRACE PAN

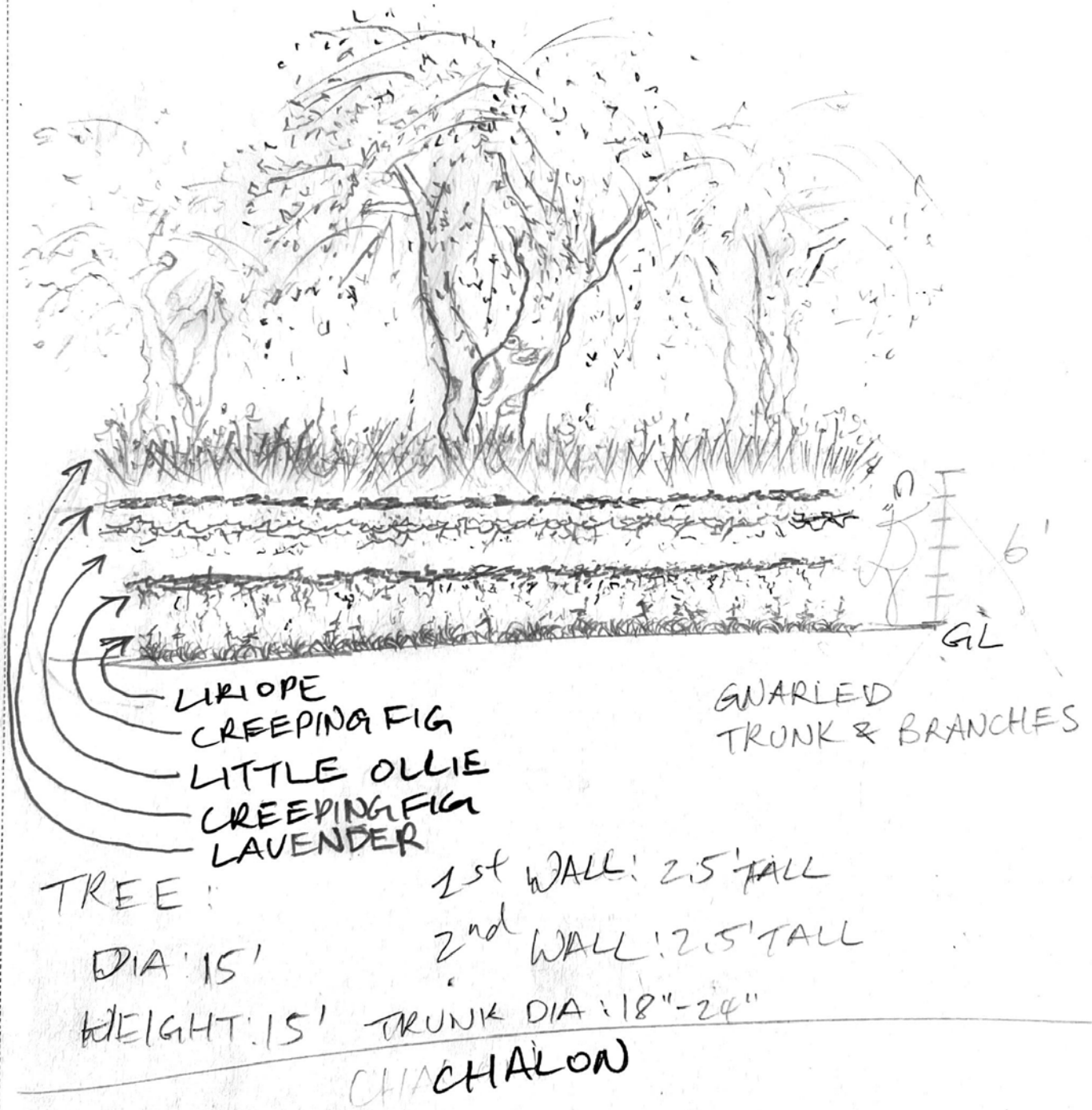
MAY 15, 2022

# Meeting #4

## Chalon

# SEVILLANO OLIVE TREE

Olea europaea 'Sevillano'



GRACE PAN

05/22/22

SEVILLANO OLIVE TREE

← FLOWER DETAIL



OPPOSITE  
LEAF  
ARRANGE-  
MENT.



2"



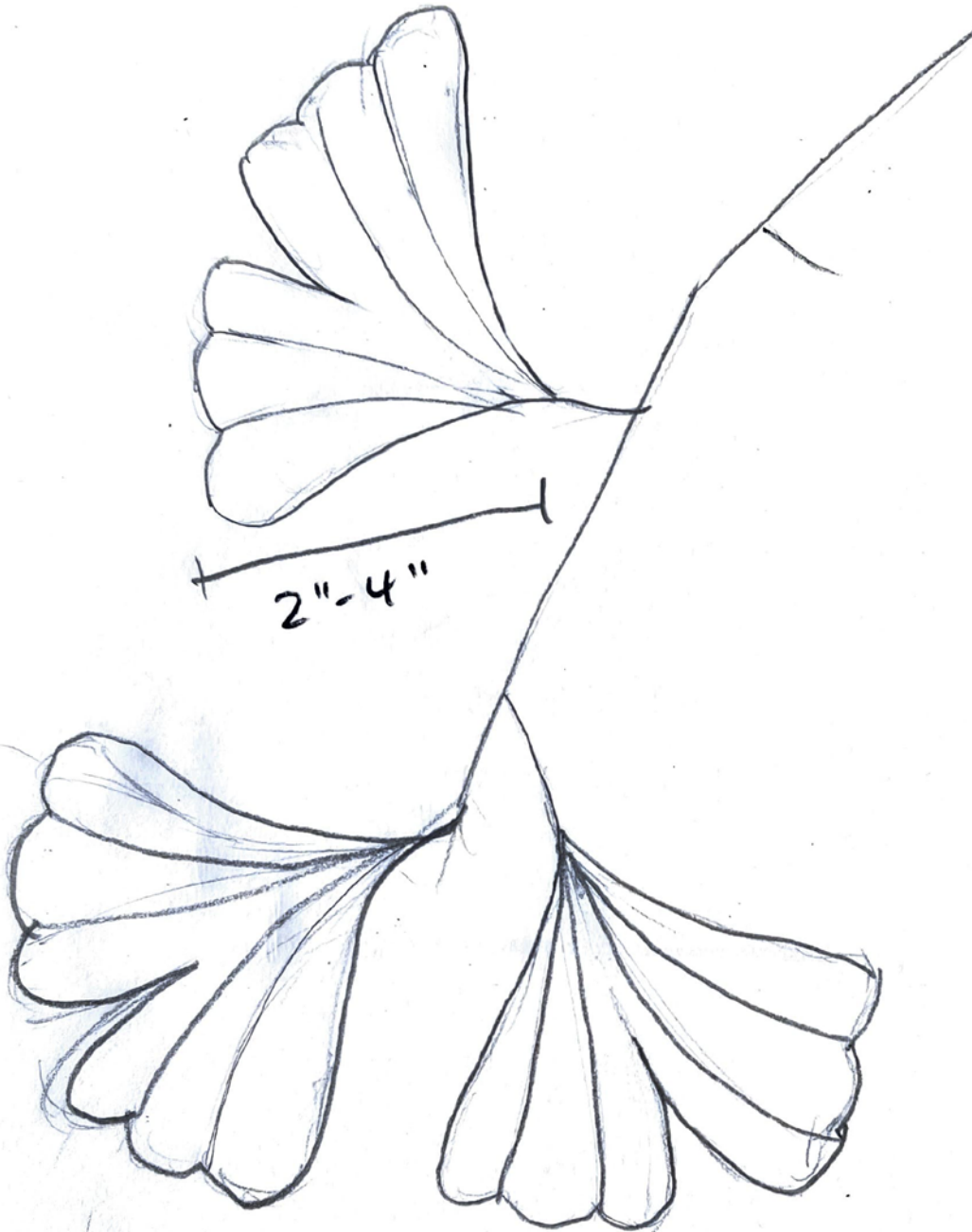
← LEAF  
DETAIL

CHALON

GRACE PAN

05.22.22

GINKGO  
LEAF  
DETAIL



CHALON

GRACE PAN

MAY 22, 2022



6' Lavandula heterophylla  
LAUENDER



12"-18" Liriope muscari  
'Silvery Sunproof'  
LILYTURF



Ficus pumila  
CREEPING FIG

---

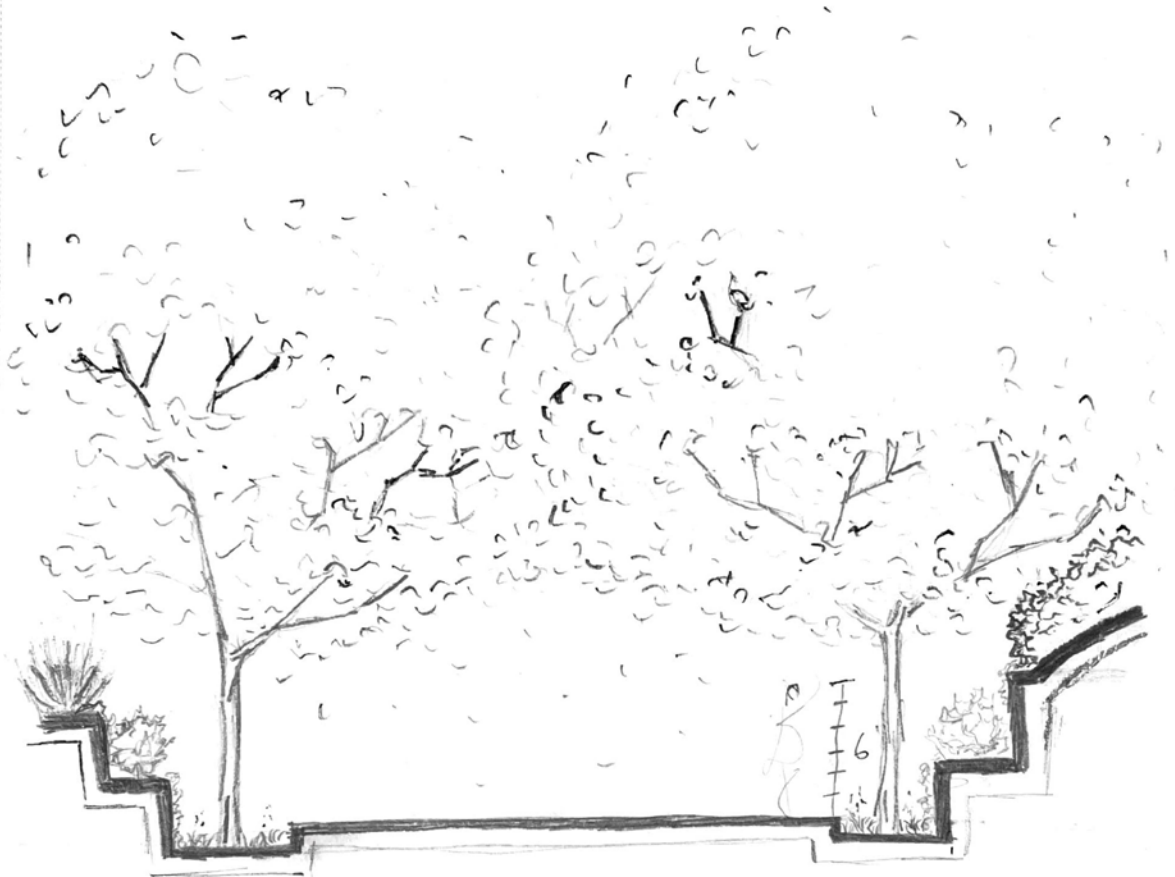
CHALON

GRACE PAN May 22, 2022



GINKO  
 CREEPING FIG  
 LIRIOPE  
 LAVENDER  
 CEANOTHUS

Ginkgo biloba, 'Autumn Gold'



MEASUREMENTS

TREE: GINKO 'AUTUMN GOLD'  
 HEIGHT: 30' TRUNK DIA: 12"  
 WIDTH: 20'  
 BRANCHING: 8'

DRIVEWAY: 20' WIDE  
 PLANTER: 5' WIDE  
 TREE @ CENTER OF PLANTER

CHALON

GRACE PAN

05.22.22