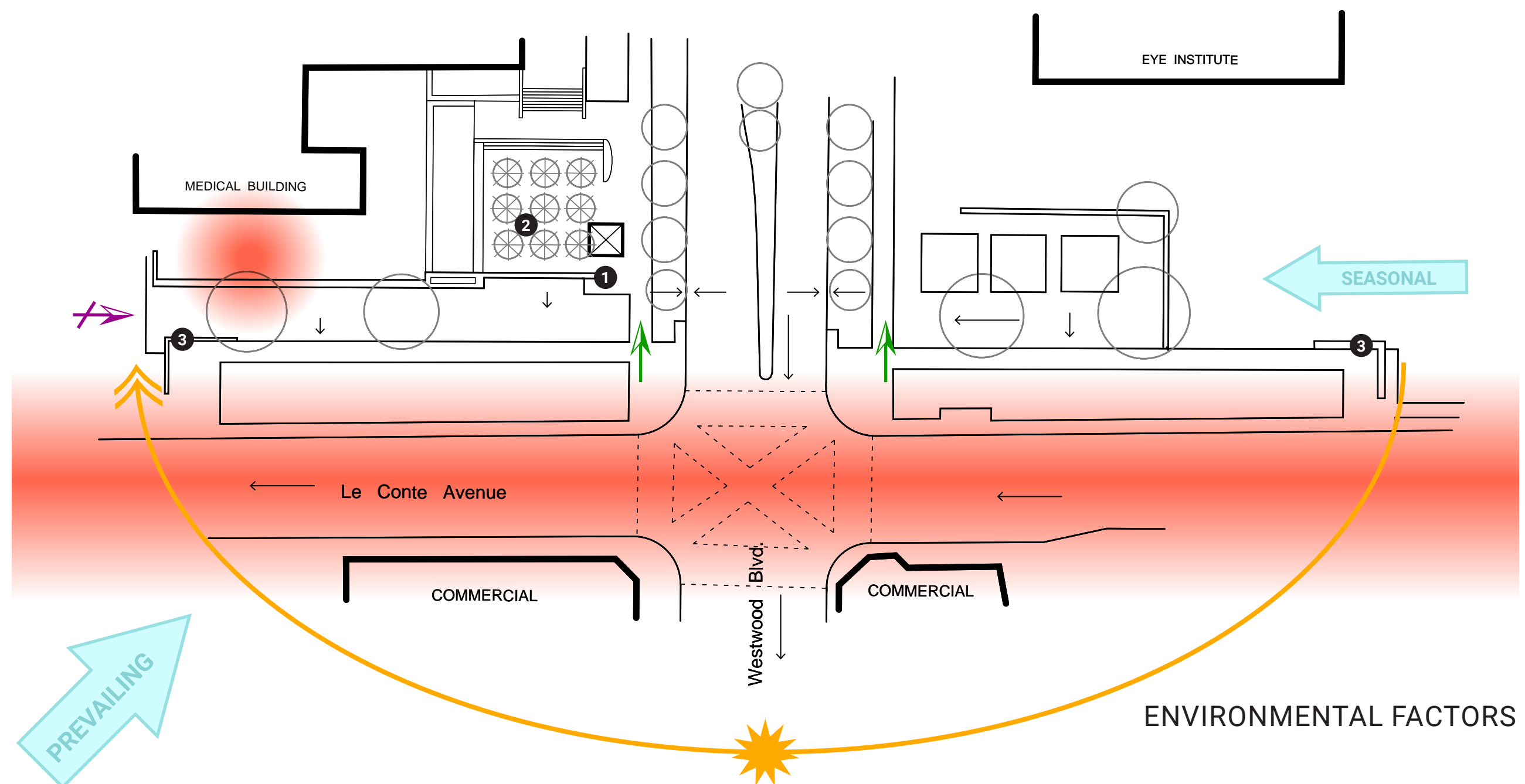


PEDESTRIAN AND VEHICULAR CIRCULATION

Vehicular Circulation
 Pedestrian Circulation

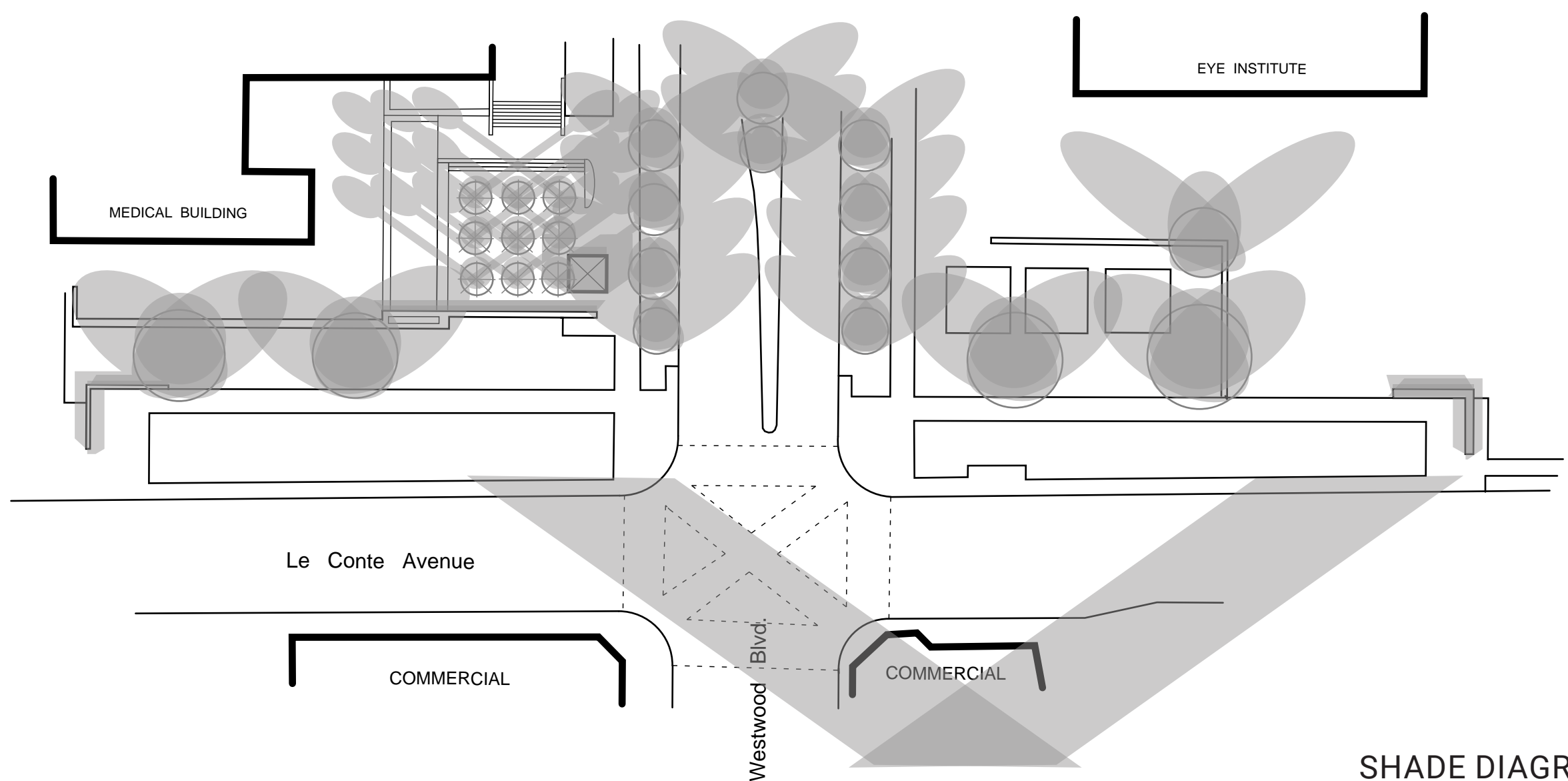


ENVIRONMENTAL FACTORS

Sun Path
 Wind
 Noise
 Drainage Direction
 Good Views
 Bad Views

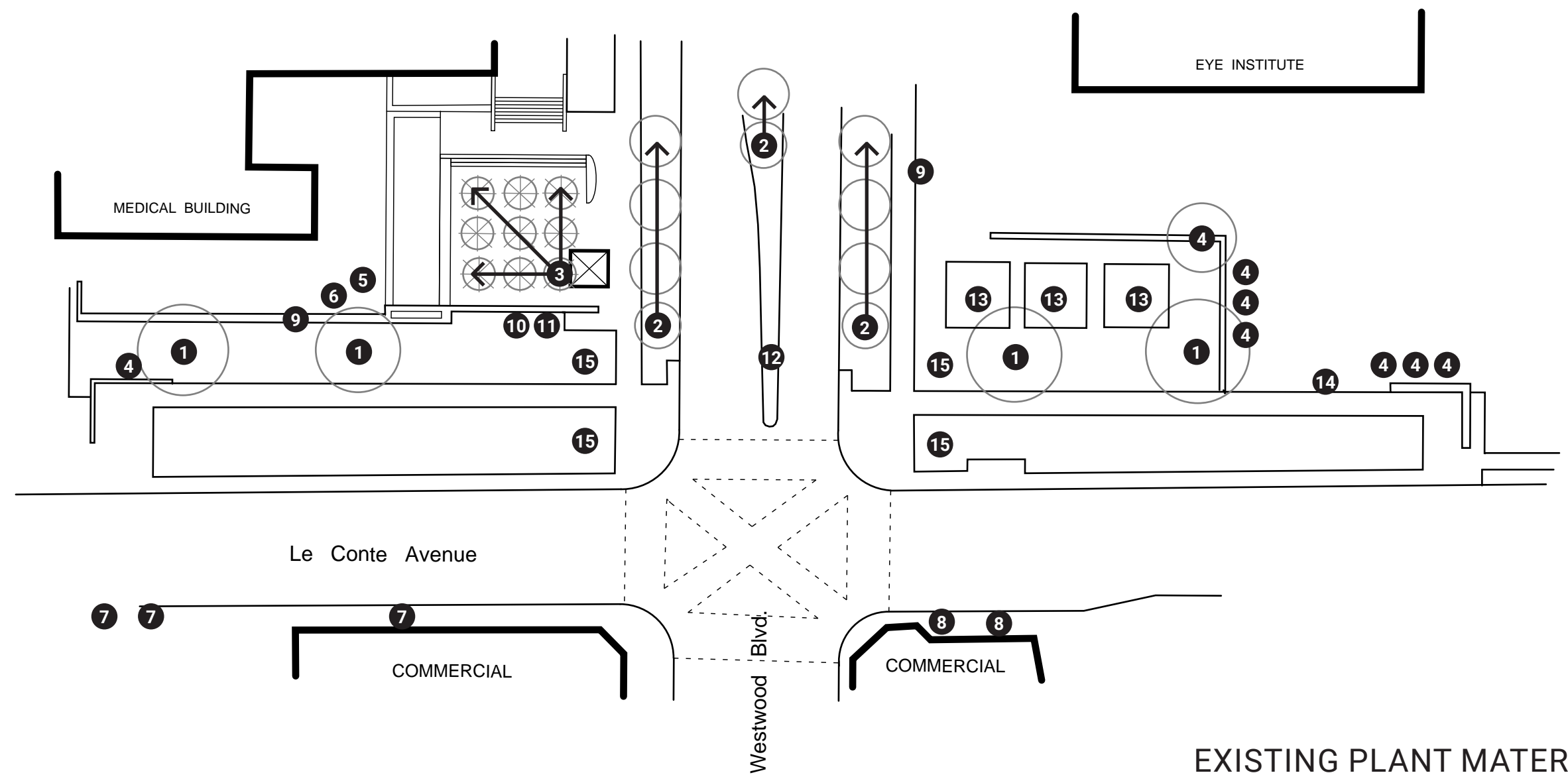
POINTS OF INTEREST

- 1 UCLA Sign Wall
- 2 Grid of California fan palms
- 3 Wall bookends



SHADE DIAGRAM

No Shade
 Partial Shade
 Deep Shade



EXISTING PLANT MATERIAL

- TREES
- 1 *Ficus rubiginosa*
 - 2 *Platanus x hispanica*
 - 3 *Washingtonia filifera*
 - 4 *Pinus canariensis*
 - 5 Unknown broad-leaf tree
 - 6 *Washingtonia robusta*
 - 7 *Magnolia grandiflora*
 - 8 *Ficus microcarpa*
- SHRUBS AND GROUNDCOVERS
- 9 *Phyllostachys nigra*
 - 10 *Agapanthus* sp.
 - 11 *Hemerocallis* sp.
 - 12 *Bougainvillea* sp.
 - 13 *Loropetalum chinense*
 - 14 *Ligustrum japonicum*
 - 15 Turf grass

Sunset Zone 23 -
Thermal Belts along the
Southern California Coast
Average winter lows about 45 F and
summer highs range 78-89 F

Soil: Sandy loam

OBSERVATIONS

The biggest detractors from the pedestrian experience are the noise and lack of shade all along Le Conte Ave. There is also a substantial hum of noise from the medical building.

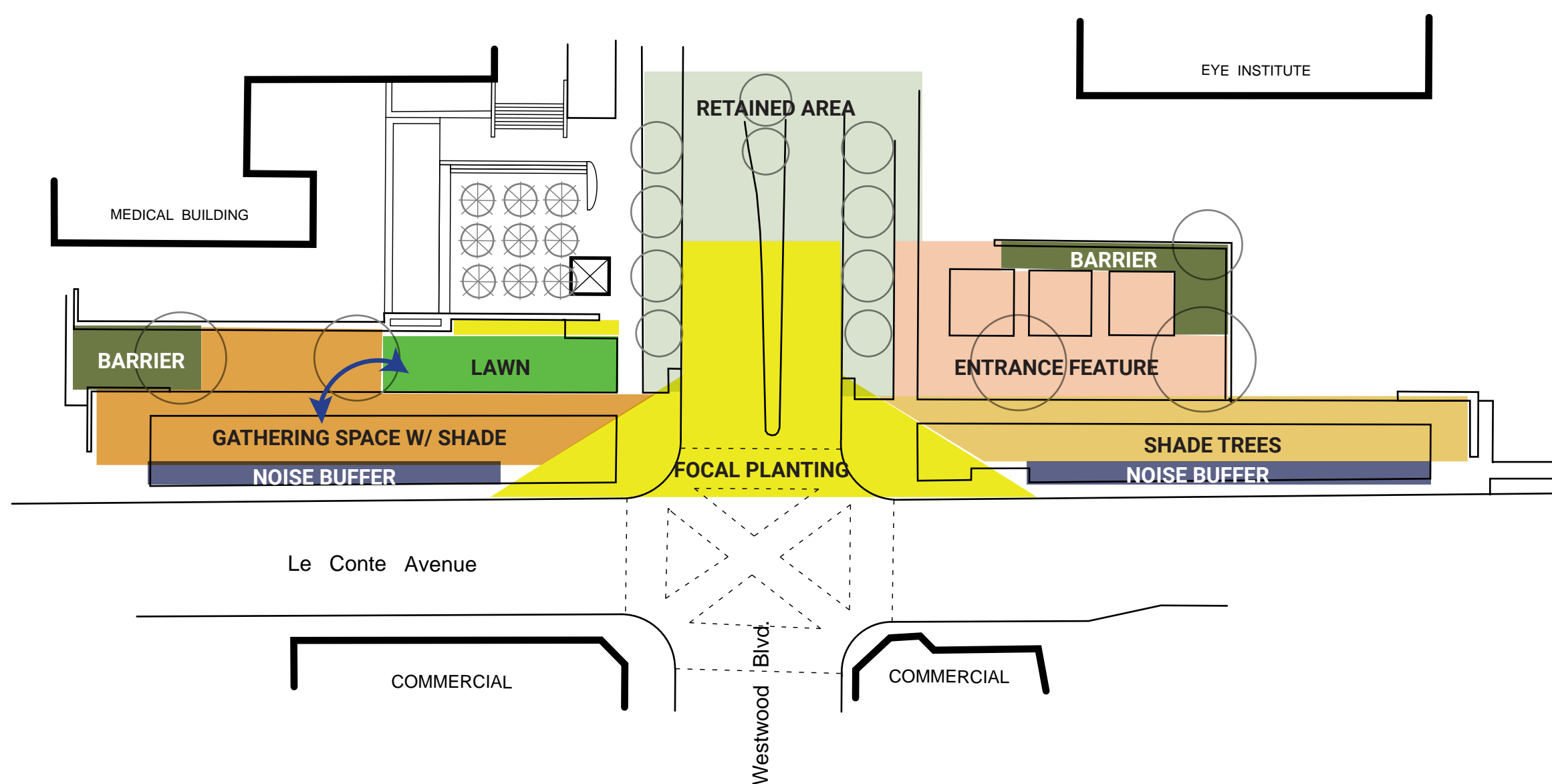
The areas between and around the existing planters on the east side of Westwood Blvd. are narrow with poor visibility, which promotes unexpected human residents.

The allee of London plane trees along Westwood Blvd make for a pleasant view and shaded walk. The grid of *Washingtonia filifera* behind the UCLA sign wall is interesting but could use some highlighting.

Overall, however, the landscaping is bland and consists primarily mowed turf grass, which is resource-intensive and doesn't provide much visual interest.

DESIGN GOALS

- Create a prominent entry to UCLA campus
- Improve the pedestrian experience along Le Conte Ave.
- Create gathering spaces for UCLA students and visitors to Westwood
- Add more color and seasonal interest plantings
- Prioritize low-water use plants where appropriate



AREA USE DIAGRAM



UCLA SOUTH ENTRY REMODEL

DESIGN NARRATIVE

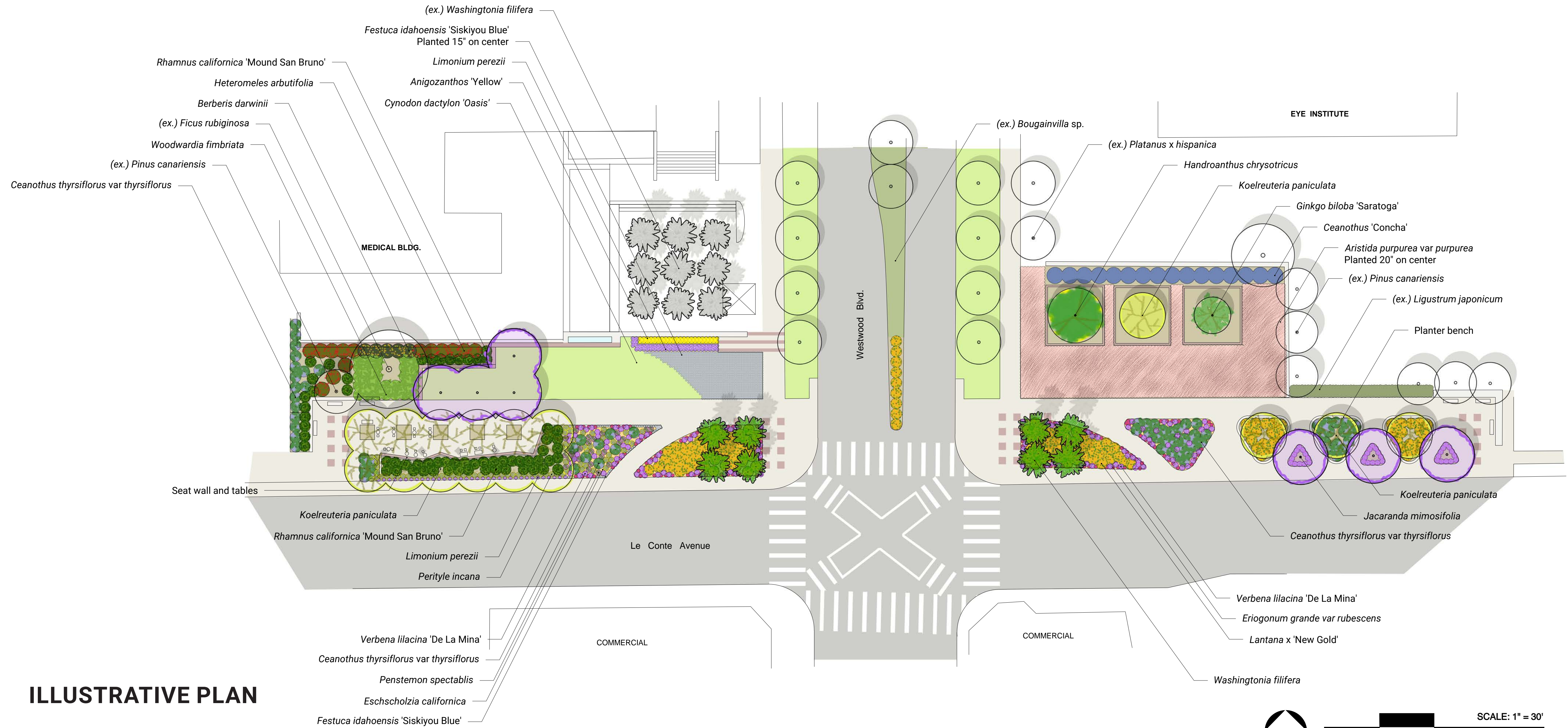
The concept for this plan is bright and bold with strong contrast. Color, texture, and form are juxtaposed to make the UCLA entry a memorable experience for all visitors.

The corners at the intersection of Westwood and Le Conte have arced planting beds filled primarily with *Lantana x 'New Gold'*, which flowers with a profusion of bright gold for an extended period of time. Along the borders of the planter are pockets of *Verbena lilacina*, *Eriogonum grande rubescens*, and *Eschscholzia californica* for additional pops of color. Four *Washingtonia filifera*s on both sides echo the existing *Washingtonia* grid and serve as a formal gateway maker. After passing through the palms, visitors are met with a verdant alley of (existing) *Platanus x hispanica*, marking their arrival onto campus.

On the east side of the entry, the existing planters have been planted with three different trees as an ode to the changing of the seasons. *Handroanthus chrysotricus* flowers bright yellow in spring, followed by *Koelreuteria paniculata*'s wispiest blooms in the summer, followed by *Ginkgo biloba*'s golden fall foliage. All three drop their leaves for the winter, and their bare branches are an elegant reminder that the cycle will repeat again soon. Contrasting with the yellow trees are the *Ceanothus 'Concha'* backdrop and the soft purple field of *Aristida purpurea*. On the opposite side of Westwood Blvd, the existing sign wall has been highlighted with the tall blooms of *Anigozanthos 'Yellow'*. A lower layer of *Limonium* provides contrast, and an even lower layer of clumping grass *Festuca idahoensis 'Siskiyou Blue'* planted in a grid draws in the eye.

Further west, the walkway has been transformed into a large outdoor room, where patrons of Westwood's shops and restaurants can gather with friends and enjoy coffee or a snack outdoors. A comfortably tall *Rhamnus californica* hedge between the street and seating area provides a sense of enclosure while absorbing some of the noise from the busy street. Across the walkway from the seating area is a partially shaded lawn with a seat wall, lending the area plenty of comfortable places for people to sit and linger. Behind the west bookend wall are taller plants and groundcover with high animal habitat value that fill out the somewhat awkward and unseen space. The screening hedge of *Heteromeles arbutifolia* and *Berberis darwinii* makes a lush, bright, and berry-ful backdrop that also helps absorb noise from the nearby medical building.

On the far opposite side of the project, near the east bookend wall, six new shade trees have been added along Le Conte Ave. The purple flowers of *Jacaranda mimosifolia* contrast with those of *K. paniculata*, which are planted in planters with seatwalls. Pedestrians can walk through with added protection from the heat or take a short rest under the shade and enjoy a view of the new UCLA entry.



ILLUSTRATIVE PLAN

Botanic	Common	Mature Height	Mature Width	WUCOLS	Place of Origin
<i>Anigozanthos 'Yellow'</i>	yellow kangaroo paw	4-6'	1-2'	M	Australia
<i>Aristida purpurea</i> var. <i>purpurea</i>	purple three awn	1-2'	2'	VL	CA Native
<i>Berberis darwinii</i>	Darwin's barberry	8-10'	6-7'	M	South America
<i>Ceanothus 'Concha'</i>	Concha ceanothus	6-8'	8-10'	L	CA Native
<i>Ceanothus thyrsiflorus</i> var. <i>thyrsiflorus</i>	creeping blueblossom	2-3'	6-8'	L	CA Native
<i>Cynodon dactylon 'Oasis'</i>	Oasis bermuda grass	Mow to 2"	Running	M	Africa
<i>Eriogonum grande</i> var. <i>rubescens</i>	red-flowered buckwheat	1'	3'	VL	CA Native
<i>Eschscholzia californica</i>	California poppy	1'	1-2'	VL	CA Native
<i>Festuca idahoensis 'Siskiyou Blue'</i>	blue Idaho fescue	1-2'	1-2'	L	CA Native
<i>Ginkgo biloba 'Saratoga'</i>	maidenhair tree	40'	15-20'	M	Asia
<i>Handroanthus chrysotricus</i>	golden trumpet tree	30'	25-30'	M	South America
<i>Heteromeles arbutifolia</i>	toyon	8-10'	6-8'	L	CA Native
<i>Jacaranda mimosifolia</i>	jacaranda	25-45'	30'	M	South America
<i>Koelreuteria paniculata</i>	goldenrain tree	35'	20-25'	L	Asia
<i>Lantana x 'New Gold'</i>	New Gold lantana	1-2'	4-6'	L	Central and South America
<i>Limonium perezii</i>	sea lavender	2-3'	2-3'	L	Canary Islands
<i>Penstemon spectabilis</i>	royal penstemon	2-4'	3-4'	L	CA Native
<i>Perityle incana</i>	Guadalupe Island rock daisy	3-4'	3-4'	VL	CA Native
<i>Rhamnus californica 'Mound San Bruno'</i>	Mound San Bruno coffeeberry	4-6'	5-6'	L	CA Native
<i>Verbena lilacina 'De La Mina'</i>	De La Mina lilac verbena	2-3'	3-4'	L	CA Native
<i>Washingtonia filifera</i>	California fan palm	70'	10-20'	M	CA Native
<i>Woodwardia fimbriata</i>	giant chain fern	4-6'	4-6'	M	CA Native



UCLA SOUTH ENTRY REMODEL

JACQUELINE WEE

06.08.2022

LD5 - Planting Design - Instructor: Stephen Davis

PLANT PALETTE