

PROJECT #2

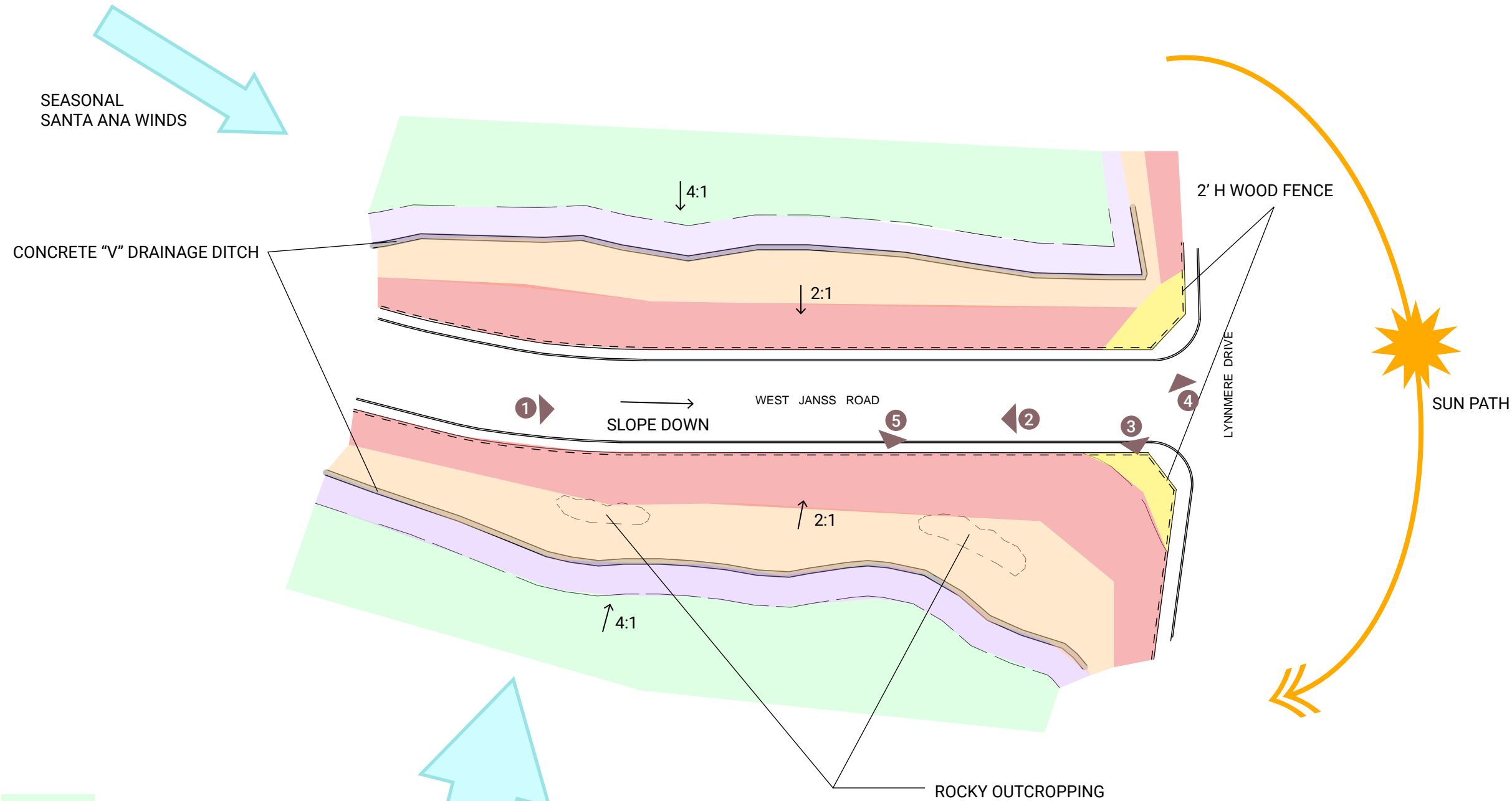
SLOPE PLANTING

Jacqueline Wee

LD5 - Instructor: Stephen Davis

05.20.2022

SLOPE PLANTING: SITE ANALYSIS



1 View looking south on W Janss Rd.



2 View looking north on W Janss Rd.



3 View of west corner



4 View of east corner



5 View up slope

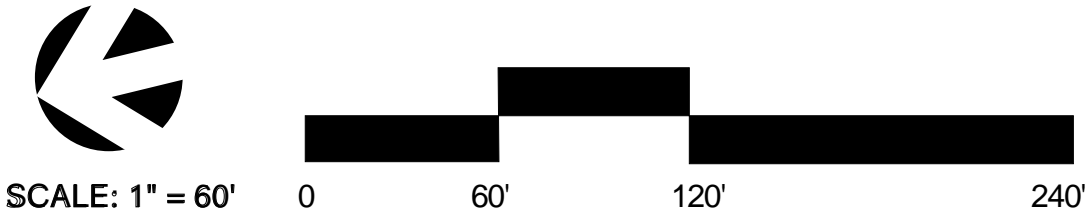
SUNSET ZONE 21 - Warm spots in Southern California's Areas of Occasional Ocean Influence:
Average winter lows 40 F and summer highs to 90-94 F

SOIL: Rocky, shaley loam

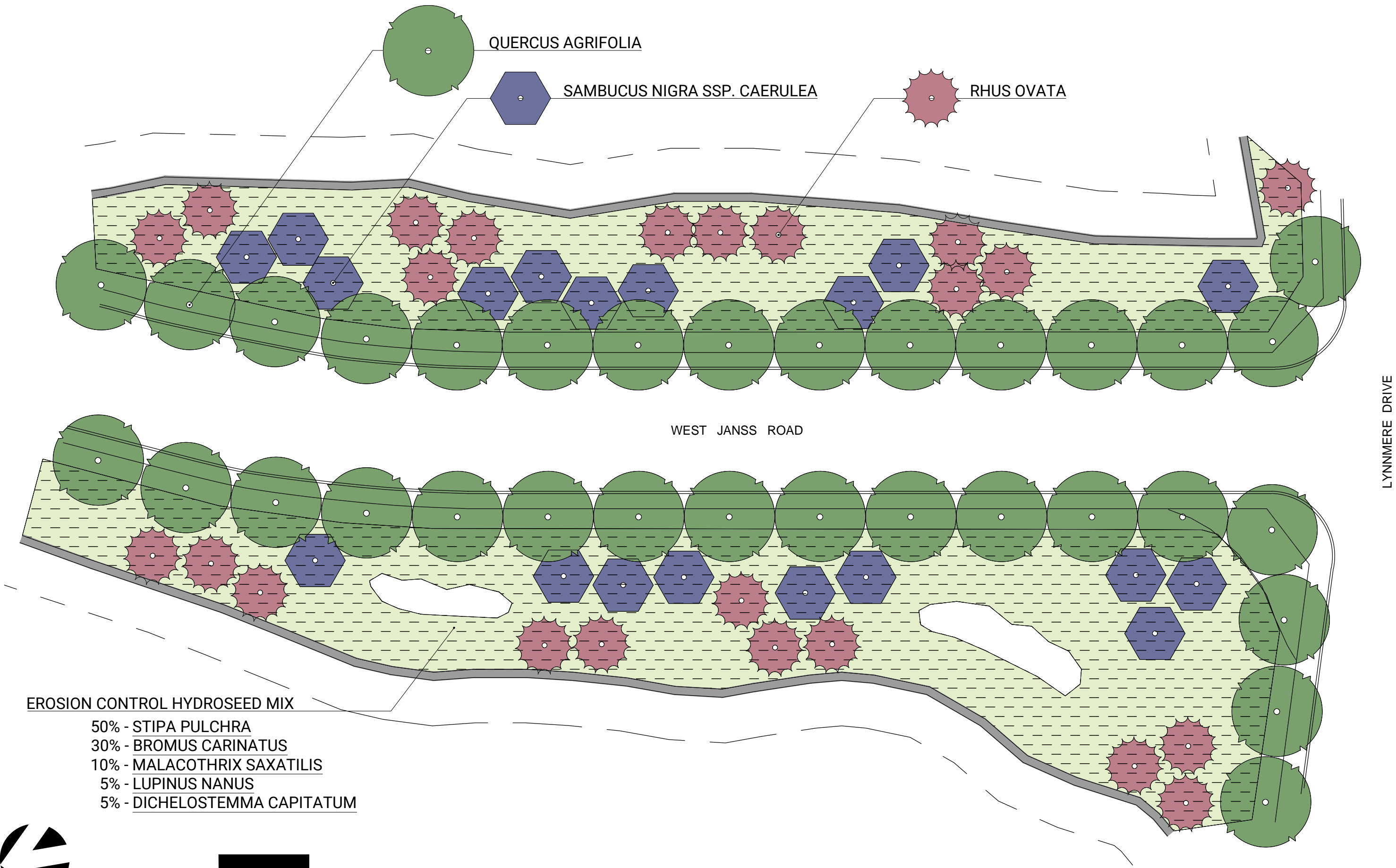
CA PLANT COMMUNITY: Coastal Sage Scrub

EXISTING PLANTS, NATURAL AREAS: *Acmispon glaber*, *Artemisia californica*, *Cylindropuntia prolifera*,
Displacus aurantiacus var. *puniceus*, *Eriogonum fasciculatum*, *Heteromeles arbutifolia*, *Salvia leucophylla*,
Sambucus nigra ssp. *mexicana*, *Opuntia littoralis*

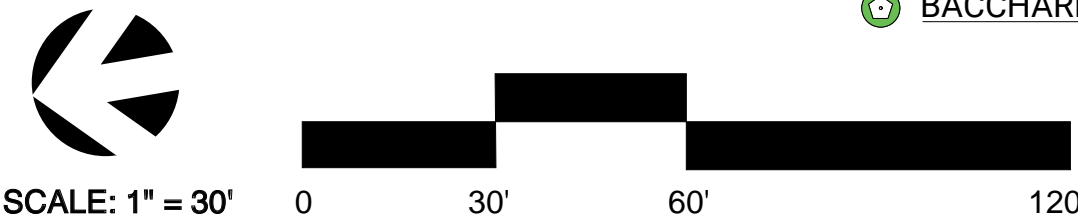
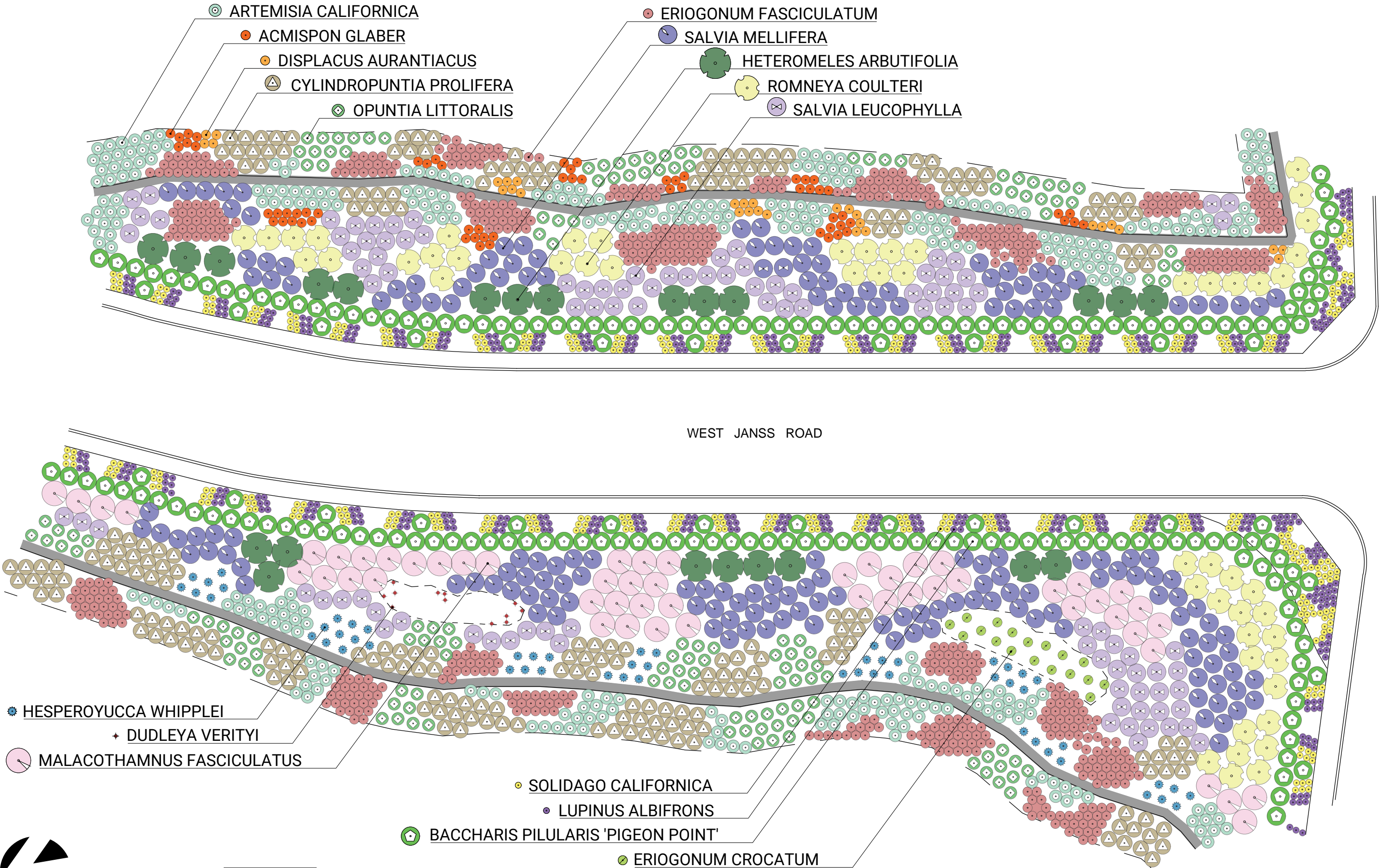
EXISTING PLANTS, SURROUNDING AREAS: *Acacia redolens*, *Cedrus deodara*, *Cistus creticus*, *Cistus salviifolius*,
Malosma laurina (N), *Marrubium vulgare*, *Punica granatum*, *Pistacia chinensis*, *Quercus agrifolia* (N)



SLOPE PLANTING: TREE AND HYDROSEED PLAN



SLOPE PLANTING: SHRUB PLAN



SLOPE PLANTING: DESIGN NARRATIVE

Since the project area is adjacent to natural areas, I chose 100% California native plants, and specifically plants that are native to the Thousand Oaks/Moorpark area.

For the street trees, I selected *Quercus agrifolia*, and those along with *Sambucus nigra* ssp. *caerulea* are placed towards the bottom of the hill, where there's the most amount of water naturally available. Higher up on the hill are *Rhus ovata*, which can tolerate dryer, harsher conditions.

The hydroseed mix is to be applied to the majority of the 2:1 hillside area. It's a quick-growing, primarily grass mix for fast coverage and erosion control. *Bromus carinatus* establishes very quickly and has a shallow, fibrous root system, while *Stipa pulchra* is longer lived with deep roots. *Malacothrix saxatilis* is a rhizome-forming perennial for additional erosion control. Sprinkled in the mix are some floral highlights from *Lupinus nanus* and *Dichelostemma capitatum*.

In the ornamental planting strip along the street and on the street corners are clusters of *Solidago californica* and *Lupinus albifrons*. Their flowers' complementary colors are attractive together, and they both have evergreen foliage. The ornamental strip is separated from the rest of the planted hillside area by a low strip of *Baccharis pilularis* 'Pigeon Point,' which has bright-green, fine-textured foliage. Whether walking or driving, human passers-by can enjoy the rhythm and color of the planted area closest to the street.

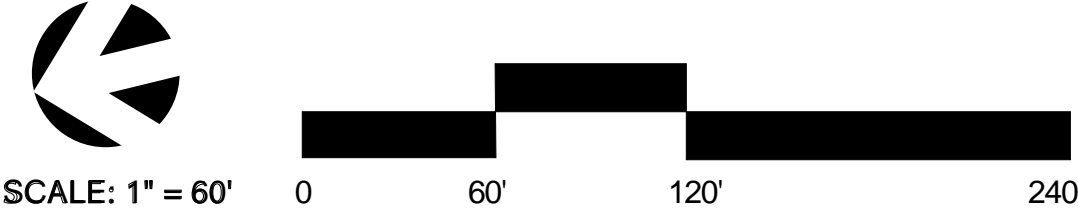
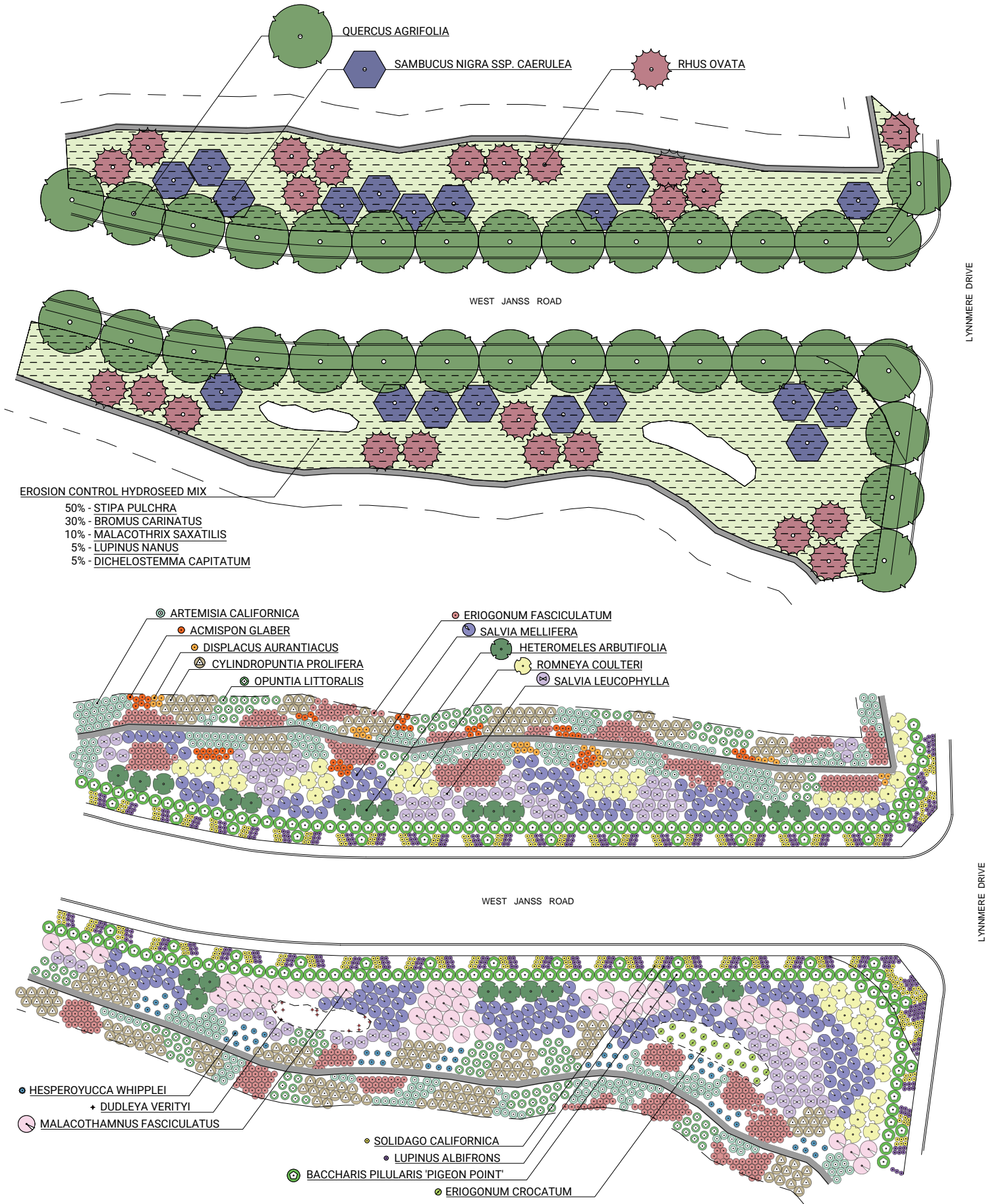
In the top 15' restoration zones on both sides, I used plants that matched what is already growing in the undisturbed zones. I saw primarily *Artemisia californica* and *Eriogonum fasciculatum*, so I kept the ratios skewed towards those plants, but I added more *Cylindropuntia prolifera* and *Opuntia littoralis* to support cactus wrens, which nest almost exclusively in those spiny cacti species.

The west-facing slope has drifts of *Salvia leucophylla* and *Salvia mellifera* with clusters of *Romneya coulteri*. Its cheerful white flowers will provide nice contrast to the sages, and as an aggressively spreading plant, it can further help with erosion control once it's established.

During my site visit, I noticed that the east-facing slope seems to have harsher conditions and is more sparse than the west-facing slope. My guess is that it's a combination of the rocky areas and the Santa Ana winds, so I populated the east-facing slope with a higher ratio of succulent plants and vigorous shrubs.

I wanted to feature two rare plants that are endemic to this area and apparently thrive in the harsh conditions that are present, so I dedicated the rocky outcropping areas to *Dudleya verityi* and *Eriogonum crocatum*.

In general, the planting is dense, with clusters of each type of plant loosely repeated throughout the slopes. Since conditions seem very difficult for plant establishment, I wanted extra insurance that at least some of the right plants will be in the right place and that enough will eventually get established to help with long-term erosion control.





Acmispon glaber



Artemisia californica



Baccharis pilularis
'Pigeon Point'



Cylindropuntia prolifera



Dudleya verityi



Eriogonum crocatum



Eriogonum fasciculatum



Hesperoyucca whipplei



Heteromeles arbutifolia



Lupinus albifrons



Malacothamnus
fasciculatus



Mimulus aurantiacus



Opuntia littoralis



Quercus agrifolia



Rhus ovata



Romneya coulteri



Salvia leucophylla



Salvia mellifera



Sambucus nigra ssp.
caerulea



Solidago californica

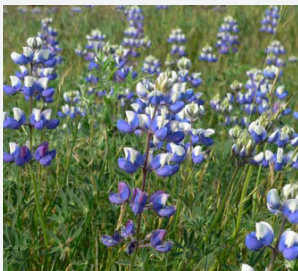
HYDROSEED MIX



Bromus carinatus
30%



Dichelostemma capitatum
5%



Lupinus nanus
5%



Malacothrix saxatilis
10%



Stipa pulchra
50%

Botanic	Common	Mature Height	Mature Width	WUCOLS	Place of Origin
<i>Acmispon glaber</i>	deerweed	1-3'	3'	VL	CA Native
<i>Artemisia californica</i>	California sagebrush	1-8'	4'	VL	CA Native
<i>Baccharis pilularis</i> 'Pigeon Point'	dwarf coyote brush	1-3'	6-8'	L	CA Native
<i>Cylindropuntia prolifera</i>	coastal cholla	10'	1-5'	VL	CA Native
<i>Dudleya verityi</i>	Verity's liveforever	<1'	<1'	VL	CA Native
<i>Eriogonum crocatum</i>	conejo buckwheat	1-3'	2-3'	VL	CA Native
<i>Eriogonum fasciculatum</i>	California buckwheat	1-6'	3'	VL	CA Native
<i>Hesperoyucca whipplei</i>	chaparral yucca	2-12'	2-3'	VL	CA Native
<i>Heteromeles arbutifolia</i>	toyon	20-25'	10-12'	VL	CA Native
<i>Lupinus albifrons</i>	silver lupine	3-5'	2-3'		CA Native
<i>Malacothamnus fasciculatus</i>	chaparral mallow	4-6'	6-8'	VL	CA Native
<i>Mimulus aurantiacus</i>	sticky monkeyflower	1-2'	2-3'	VL	CA Native
<i>Opuntia littoralis</i>	coast prickly pear	3'	4'	VL	CA Native
<i>Quercus agrifolia</i>	coast live oak	30-40'	30-40'	VL	CA Native
<i>Rhus ovata</i>	sugar bush	6-32'	30'	VL	CA Native
<i>Romneya coulteri</i>	matilija poppy	6-10'	6-8'	VL	CA Native
<i>Salvia leucophylla</i>	purple sage	2-5'	3-10'	VL	CA Native
<i>Salvia mellifera</i>	black sage	3-6'	6'	VL	CA Native
<i>Sambucus nigra</i> ssp.caerulea	blue elderberry	20-30'	20-30'	L	CA Native
<i>Solidago californica</i>	California goldenrod	2-5'	2-3'	L	CA Native
HYDROSEED MIX					
<i>Bromus carinatus</i>	California brome grass	1-5'	1'	n/a	CA Native
<i>Dichelostemma capitatum</i>	blue dicks	1-2'	<1'	VL	CA Native
<i>Lupinus nanus</i>	sky lupine	1-2'	1'	n/a	CA Native
<i>Malacothrix saxatilis</i>	cliff aster	1-2'	1-2'	VL	CA Native
<i>Stipa pulchra</i>	purple needlegrass	1-2'	1'	L	CA Native