

PROJECT #1

# RESIDENTIAL PLANTING DESIGN




JACQUELINE WEE

LD5 - INSTRUCTOR: STEPHEN DAVIS

04.27.2022

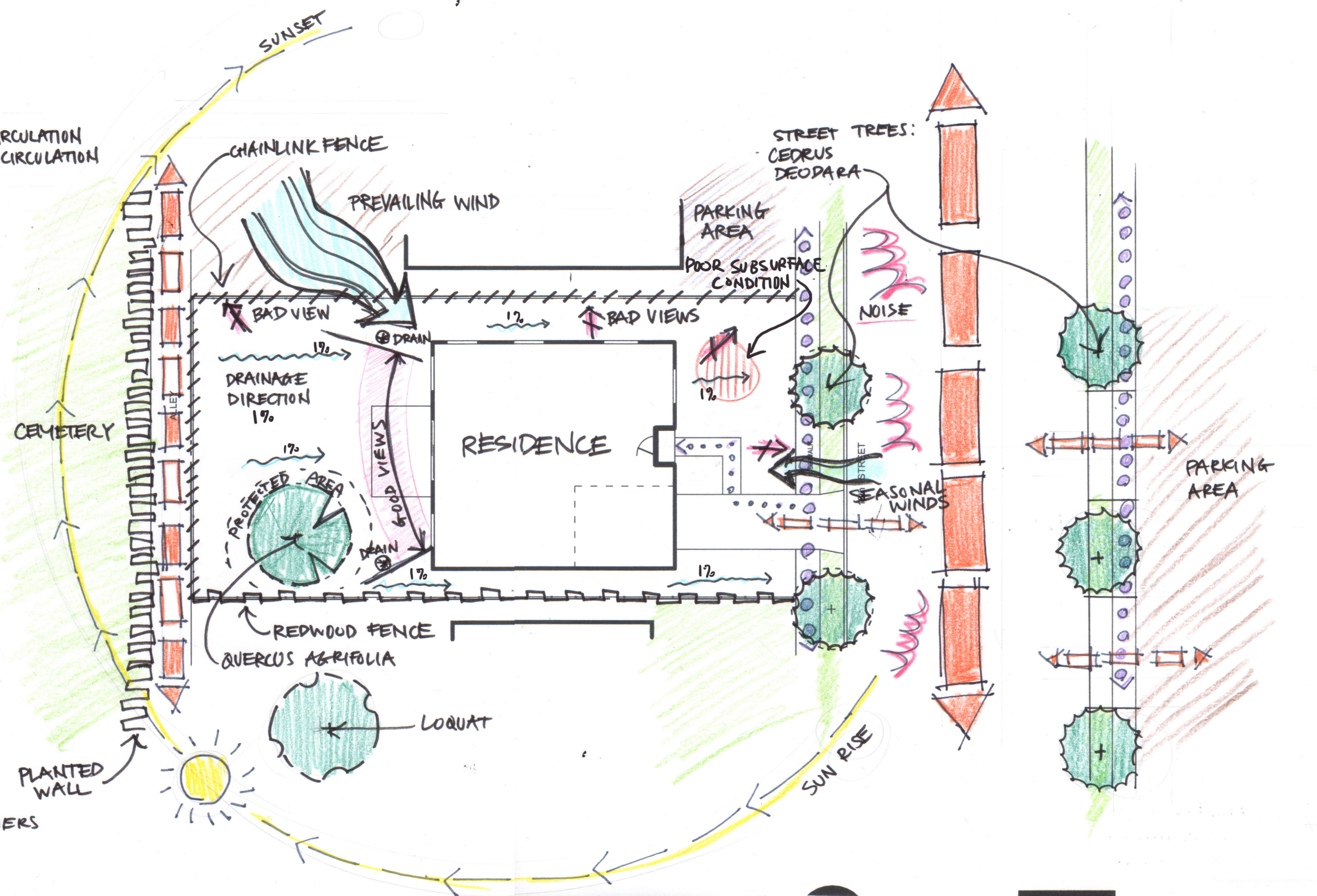
# SITE ANALYSIS

## LEGEND

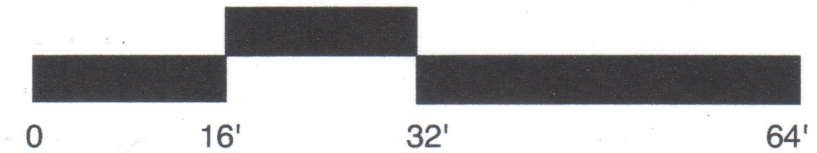
-  VEHICULAR CIRCULATION
-  PEDESTRIAN CIRCULATION
-  DRAINAGE

SOIL: SANDY LOAM

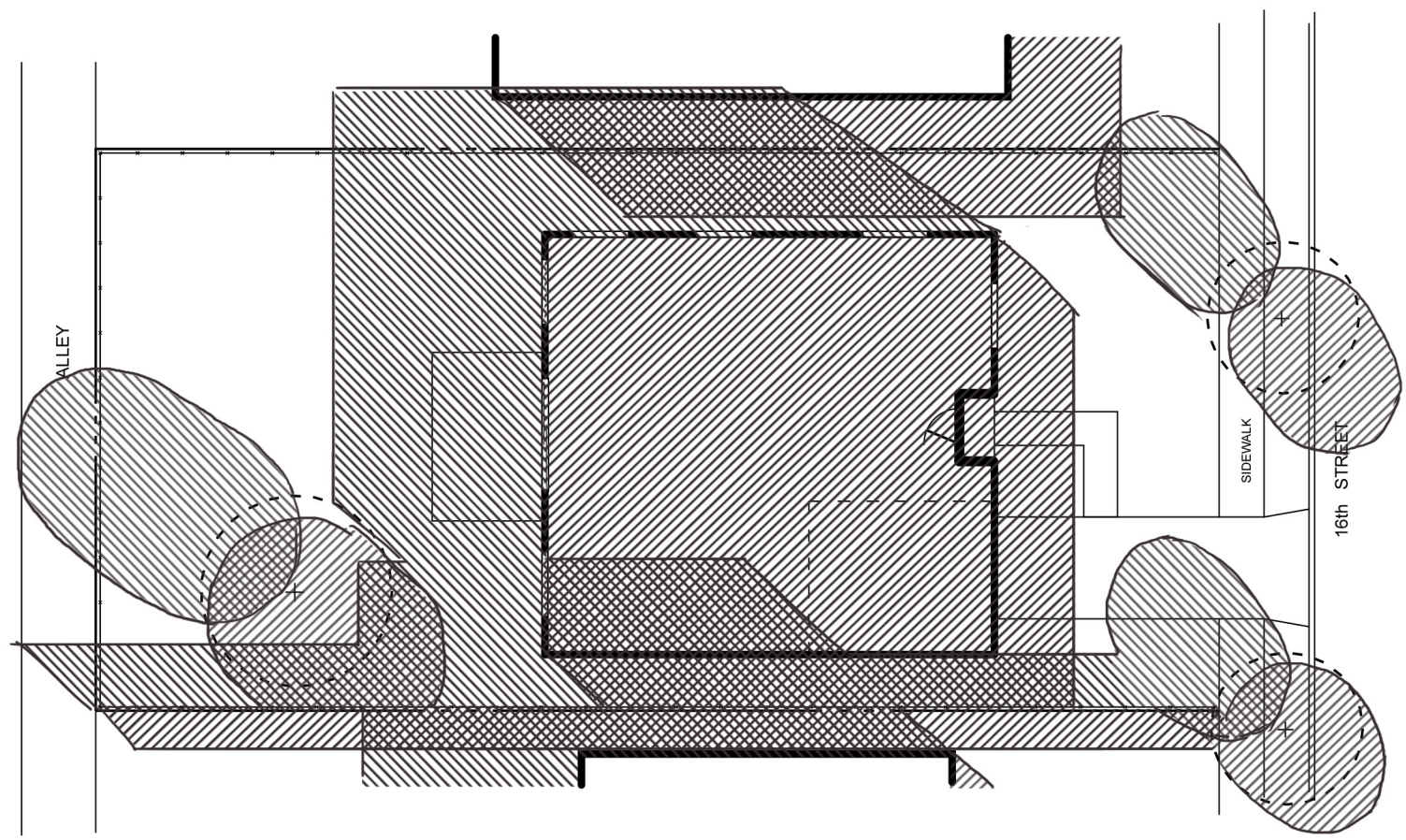
SUNSET ZONE 24  
 SO. CAL COASTAL STRIP  
 MILD WINTERS, COOL SUMMERS  
 ~45°F-75°F






SCALE: 1" = 16'

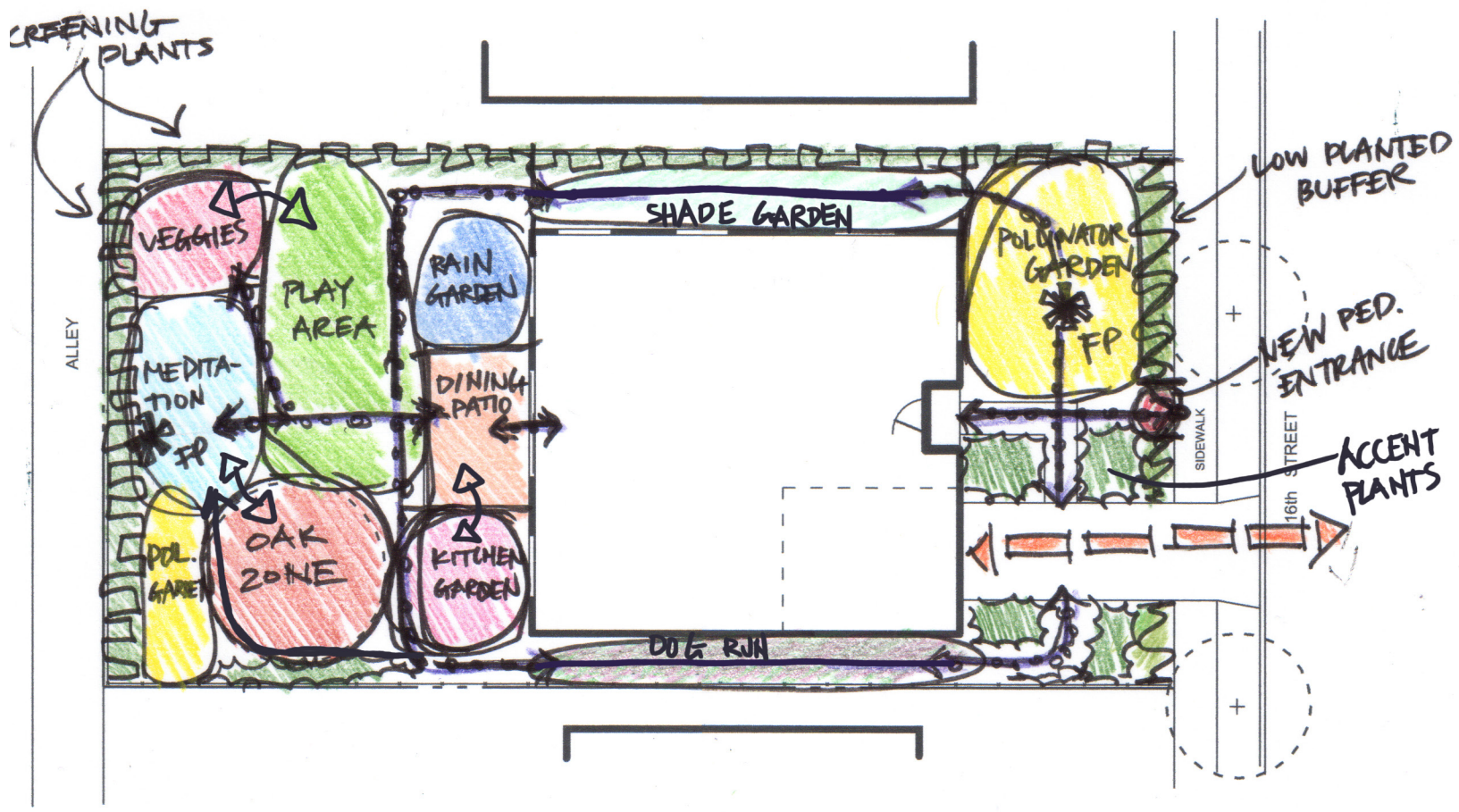





# SHADE STUDY

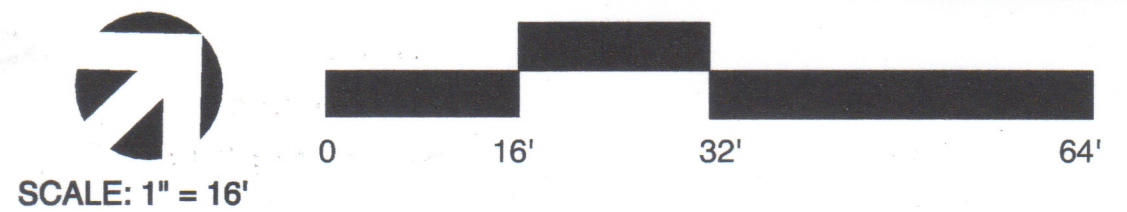


-  SUMMER AT 8AM
-  SUMMER AT 4PM
-  SHADIEST AREAS

# AREA USE BUBBLE DIAGRAM



-  PEDESTRIAN CIRCULATION
-  VEHICULAR CIRCULATION
-  RELATIONSHIP



# PLANTING PLAN



RHAMNUS CALIFORNICA 'LEATHERLEAF'  
 MUHLENBERGIA RIGENS  
 CITRUS X SINENSIS 'VALENCIA'  
 PASSIFLORA EDULIS

HEUCHERA 'PARIS'  
 POLYSTICHUM MUNITUM  
 CISSUS RHOMBIFOLIA

RHAMNUS CALIFORNICA 'LEATHERLEAF'  
 GAURA LINDHEIMERI  
 EPILOBIUM CANUM 'CATALINA'  
 LUPINUS ALBIFRONS  
 ARCTOSTAPHYLOS DENSIFLORA 'HOWARD MCMINN'

ALLEY

16TH STREET

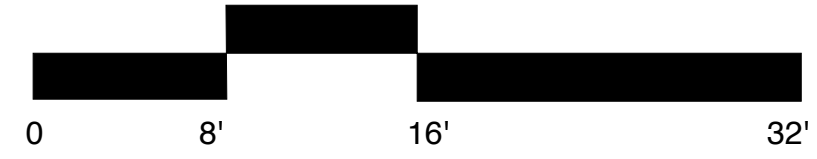
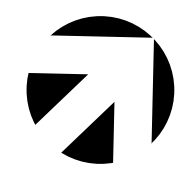
IRIS DOUGLASIANA  
 JUNCUS PATENS  
 CAREX PRAEGRACILIS  
 PHLOMIS FRUTICOSA  
 THYMUS PRAECOX SSP. ARCTICUS  
 CITRUS X LATIFOLIA  
 CITRUS X MEYERI 'IMPROVED'  
 BOUTELOUA DACTYLOIDES  
 LAVANDULA ANGUSTIFOLIA 'MUNSTEAD'  
 CAREX PRAEGRACILIS  
 MUHLENBERGIA RIGENS  
 ROSMARINUS OFFICINALES 'BARBECUE'  
 CISSUS RHOMBIFOLIA

PHLOMIS FRUTICOSA  
 ERIGERON GLAUCUS 'SEA BREEZE'  
 ERIOGONUM UMBELLATUM  
 THYMUS PRAECOX SSP. ARCTICUS  
 CARPENTERIA CALIFORNICA 'ELIZABETH'  
 PENSTEMON PALMERI

SALVIA SPATHACEA  
 HEUCHERA MAXIMA  
 CEANOTHUS RIGIDUS 'SNOWBALL'  
 RHAMNUS CALIFORNICA 'LEATHERLEAF'  
 CERCIS OCCIDENTALIS  
 CARPENTERIA CALIFORNICA 'ELIZABETH'  
 CEANOTHUS 'DARK STAR'

## LEGEND

- A VEGETABLE GARDEN
- B PLAY AREA
- C RAIN GARDEN
- D MEDITATION DECK
- E HERB GARDEN
- F SHADE GARDEN
- G ARBOR
- H DOG RUN W/ GATES
- I POLLINATOR COURTYARD
- J BIRD BATH
- K PEDESTRIAN ENTRY



SCALE: 1" = 8'

# DESIGN DESCRIPTION AND PLANT PALETTE

The idea behind this design concept is using soft edges and densely planted areas that bleed into each other to give off the feeling of "being surrounded by nature."

The front yard pollinator courtyard (I) has an abundance of flowering plants, both for pollinator support and seasonal interest. Strategically placed medium to taller plantings screen views into the house. From the living room, residents and guests can enjoy a picturesque view of the birdbath with a backdrop of floral plantings. The broken concrete courtyard area will only require only minimal excavation of the buried construction debris.

Guests visiting the house for backyard gatherings get the whole experience by passing through the courtyard and shade garden (F) and then rounding the corner to take in the whole view of the back.

The open play area (B) features buffalo grass as a low-water lawn alternative, and the pathway along its edge uses grass pavers for a more natural look.

The play area is adjacent to the entrance to the vegetable garden (A), which has a circular design meant to entice children to play in the "secret vegetable garden" as well. There's a potting bench along the north wall and a clear route to the front yard for a wheelbarrow or wagon.

The meditation space (D) is oriented at an angle away from the house with views to the oak tree and surrounding woodland planting area. Here the client will feel the most in tune with nature with the focal point western redbud tracking the changing of the seasons. Anyone practicing morning yoga can do their sun salutations with the sun rising behind the oak.

The dog run (G) doubles as a storage area with two new gates. A small arbor over the entrance will provide extra shade on a sunny day.

	Botanic	Common	Mature Height	Mature Width	WUCOLS	Place of Origin	Flower Color	Notes
*	<i>Arctostaphylos densiflora</i> 'Howard McMinn'	Howard McMinn manzanita	8-10'	8-10'	L	North America	white	
	<i>Bouteloua dactyloides</i>	buffalo grass	<1'	Spreading	L	North America	tan	
*	<i>Carex praegracilis</i>	field sedge	<1'	Spreading	M	North America	brown	
*	<i>Carpenteria californica</i> 'Elizabeth'	Elizabeth bush anemone	4-6'	3-5'	L	North America	white	
*	<i>Ceanothus</i> 'Dark Star'	California lilac 'Dark Star'	5-6'	8-10'	L	North America	purple	
*	<i>Ceanothus rigidus</i> 'Snowball'	white Monterey lilac	4-6'	6-8'	L	North America	white	
*	<i>Cercis occidentalis</i>	western redbud	10-15'	10-15'	L	North America	pink	
	<i>Cissus rhombifolia</i>	grape ivy	20'		M	Mexico to Bolivia	green	
	<i>Citrus x latifolia</i>	Bearss Lime	6-8'	6-8'	M	Asia	white	dwarf
	<i>Citrus x Meyeri</i> 'Improved'	improved Meyer lemon	6-8'	6-8'	M	Asia	white	dwarf
	<i>Citrus x sinensis</i> 'Valencia'	Valencia orange	10-15'	10-15'	M	Asia	white	
*	<i>Epilobium canum</i> 'Catalina'	Catalina fuchsia	2-4'	2-3'	VL	North America	red-orange	
*	<i>Erigeron glaucus</i> 'Sea Breeze'	seaside fleabane 'Sea Breeze'	<1'	1-2'	L	North America	pink	
*	<i>Eriogonum umbellatum</i>	sulphur buckwheat	1-2'	1-3'	L	North America	yellow	
	<i>Gaura lindheimeri</i>	beeblossom	3-4'	2-3'	L	North America	white	
*	<i>Heuchera maxima</i>	island alum root	1-2'	2'	L	North America	pink	
	<i>Heuchera</i> 'Paris'	Paris coral bells	<1'	1-2'	M	North America	pink	
*	<i>Iris douglasiana</i>	Douglas iris	2-3'	2-4'	L	North America	purple	
*	<i>Juncus patens</i>	common rush	1-3'	3'	L	North America	brown	
	<i>Lavandula angustifolia</i> 'Munstead'	lavender 'Munstead'	1-2'	2-3'	L	Mediterranean	lavender	
*	<i>Lupinus albifrons</i>	silver lupine	3-5'	3-4'	L	North America	purple	
*	<i>Muhlenbergia rigens</i>	deer grass	4-5'	4-6'	L	North America	yellow, cream	
	<i>Passiflora edulis</i>	passionfruit	10-15'	3-5'	M	Brazil	white and purple	
*	<i>Penstemon palmeri</i>	wild pink snapdragon	4-6'	2-3'	L	North America	pink	
	<i>Phlomis fruticosa</i>	Jerusalem sage	3-4'	3-4'	L	Mediterranean	yellow	
*	<i>Polystichum munitum</i>	western sword fern	2-4'	2-4'	M	North America	-	
*	<i>Rhamnus californica</i> 'Leatherleaf'	coffeeberry 'Mound San Bruno'	6-8'	6-8'	L	North America	white, red berries	
	<i>Rosmarinus officinales</i> 'Barbecue'	BBQ rosemary	4-5'	2-3'	L	Mediterranean	purple	
*	<i>Salvia spathacea</i>	hummingbird sage	1-3'	3'	L	North America	dark pink	
	<i>Thymus praecox</i> ssp. <i>arcticus</i>	creeping thyme	<1'	1-3'	L	Mediterranean	pink	

\* CA native



*Arctostaphylos densiflora* 'Howard McMinn'



*Bouteloua dactyloides*



*Carex praegracilis*



*Carpenteria californica* 'Elizabeth'



*Ceanothus* 'Dark Star'



*Ceanothus rigidus* 'Snowball'

# PLANT PALETTE CONTINUED



*Cercis occidentalis*



*Cissus rhombifolia*



*Citrus x latifolia*



*Citrus x Meyeri* 'Improved'



*Citrus x sinensis* 'Valencia'



*Epilobium canum* 'Catalina'



*Erigeron glaucus* 'Sea Breeze'



*Eriogonum umbellatum*



*Gaura lindheimeri*



*Heuchera maxima*



*Heuchera* 'Paris'



*Iris douglasiana*



*Juncus patens*



*Lavandula angustifolia* 'Munstead'



*Lupinus albifrons*



*Muhlenbergia rigens*



*Passiflora edulis*



*Penstemon palmeri*



*Phlomis fruticosa*



*Polystichum munitum*



*Rhamnus californica* 'Leatherleaf'



*Rosmarinus officinales* 'Barbecue'



*Salvia spathacea*



*Thymus praecox* ssp. *arcticus*