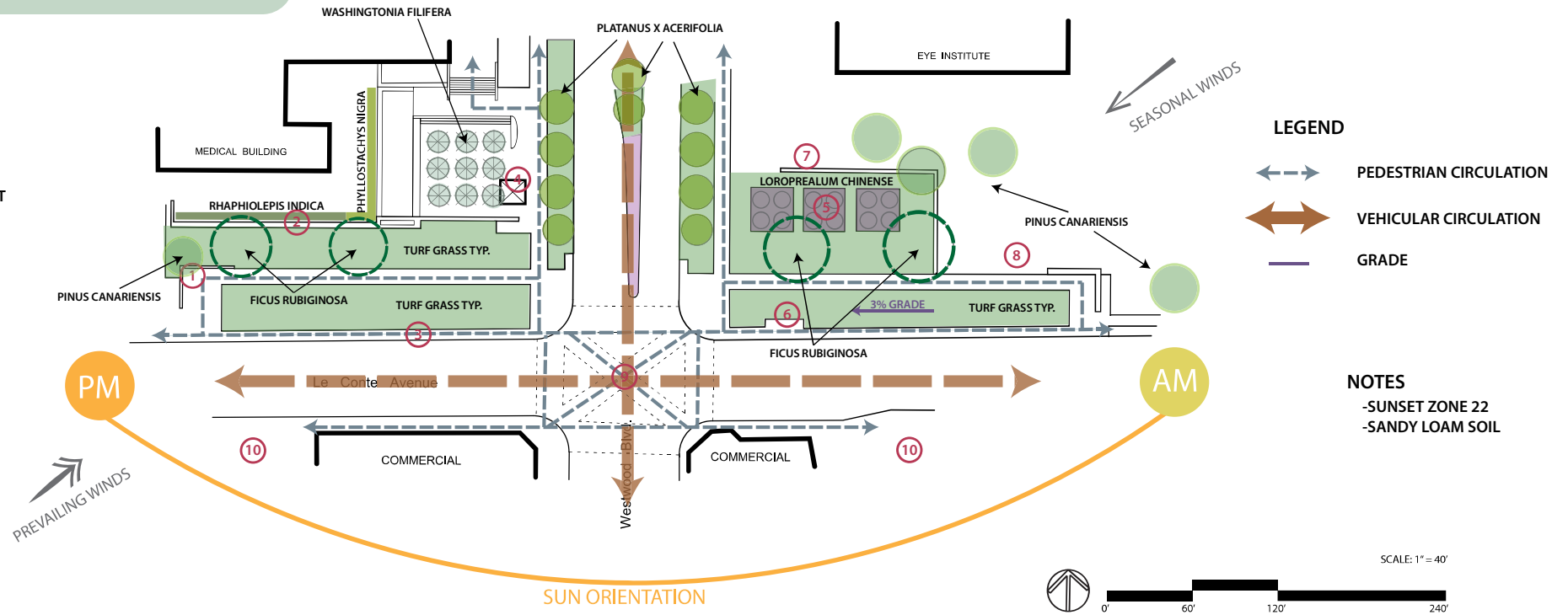


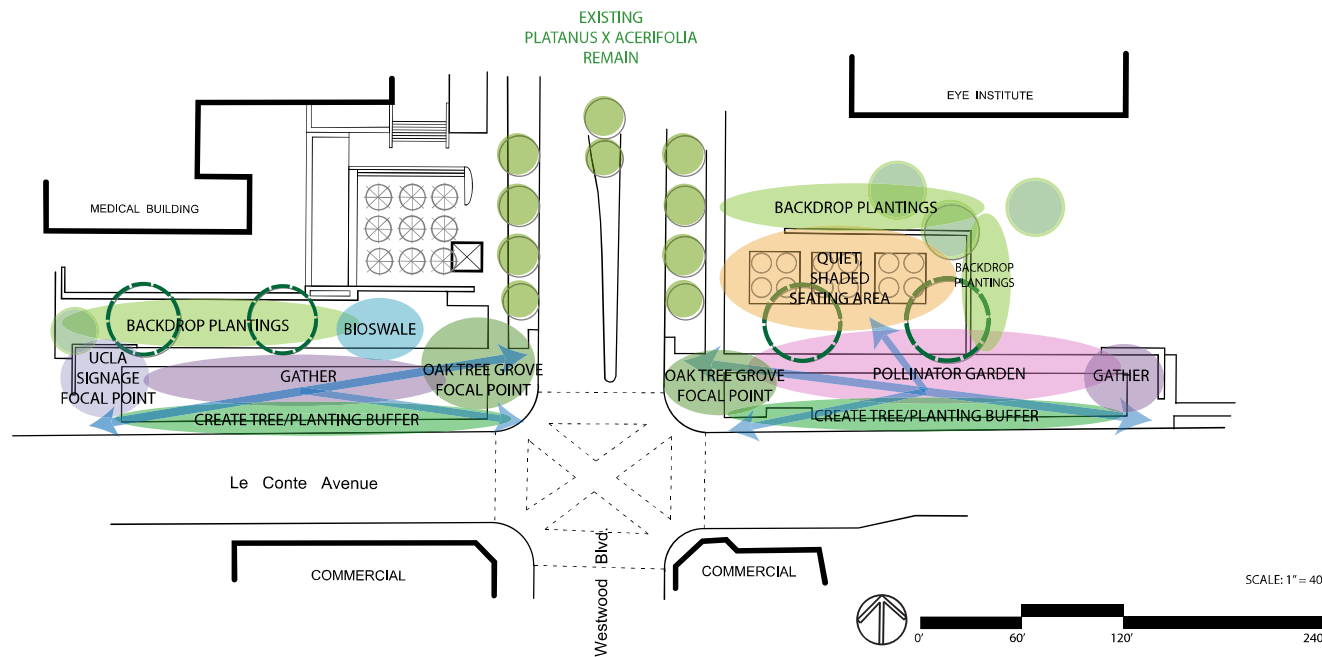
LE CONTE AVE. & WESTWOOD BLVD.

SITE ANALYSIS

- 1 UCLA SIGNAGE
- 2 4' HIGH BRICK WALL
- 3 CITY SIDEWALK WITH NO BUFFER TO STREET
- 4 BRICK BODEGA
- 5 30' SQUARE BRICK PLANTERS
- 6 ELECTRIC SCOOTER PARKING
- 7 6' HIGH BRICK WALL
- 8 6' HIGH BRICK WALL
- 9 DIAGONAL CROSSWALK
- 10 PUBLIC PARKING



AREA USE DIAGRAM

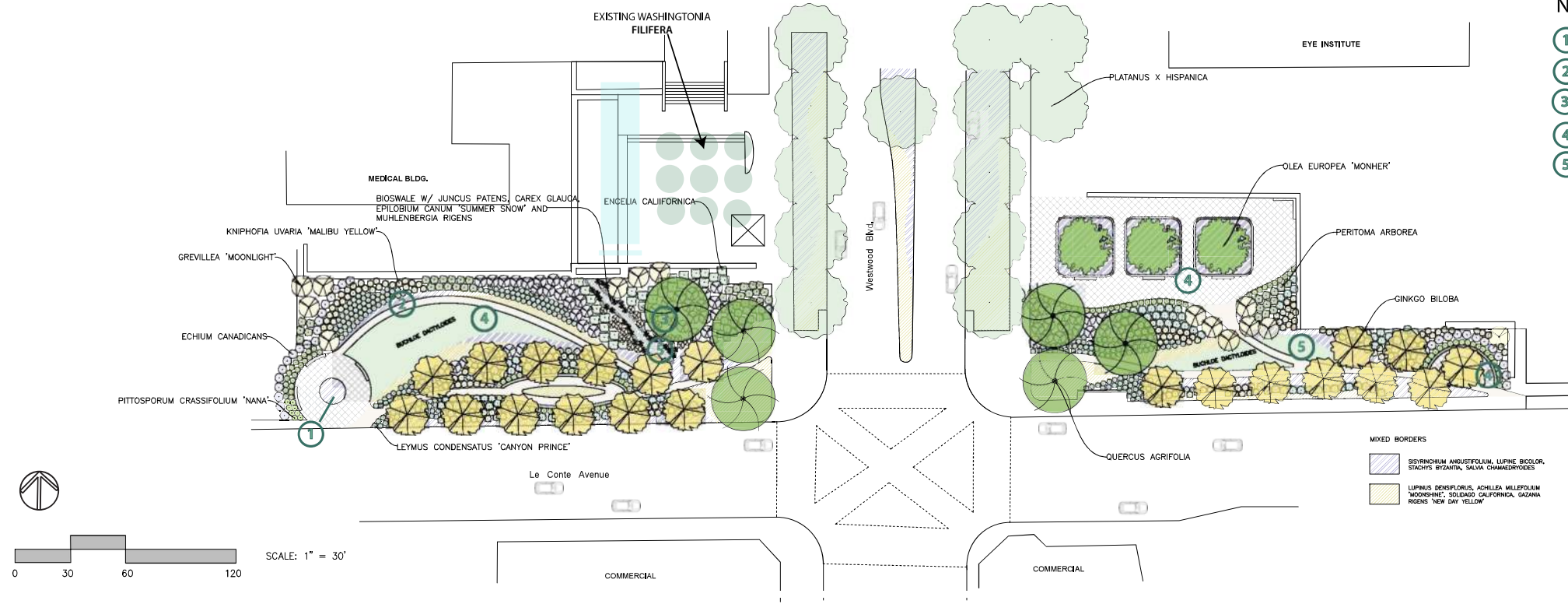


DESIGN NARRATIVE

This is a site design for the Westwood Blvd. & Le Conte Ave. entrance of the UCLA campus. The site currently contains under-utilized patches of lawn and hardscape and four mature *Ficus rubiginosa*, some of which seem to be in poor condition. The current plant palette is sparse, with mostly loropetalum and boston ivy. There is little shade from the hot Los Angeles sun with little to no seating. This is such a large space with so much potential to create a memorable UCLA landmark with meaningful meeting areas, visual interests, and a climate appropriate plant palette, far different from what is there now.

The proposed planting design aims to create an entrance with ecological significance through the placement of six large-scale *Quercus agrifolia*, our native Coast Live Oak. These trees are seen as important resources on campus because of their beauty, effect on ambiance, and habitat value. Their magnificence makes for the perfect landmark for the entrance to campus. The design includes curvilinear lines for a more naturalized appeal with large swaths of blue and gold, honoring UCLA's school colors. The palette is a blend of California natives and Mediterranean plants which are all drought-tolerant with a focus on bringing wildlife back to the area. Ginkgo trees line Le Conte Avenue creating shade to pedestrians and a buffer from passing traffic and in autumn create a beautiful allee of yellow leaves. The golden blooms of *Lupinus densiflorus*, *Achillea millefolium*, *Solidago californica*, and *Gazania rigens* are interwoven with the blue blooms of *Sisyrinchium angustifolium*, *Lupinus bicolor*, *Stachys byzantia*, and *Salvia*. Larger shrubs with varying textures also provide year around interest and color to the site. The west side of the entrance contains a bioswale as an ode to the arroyo that once flowed down from the hills through campus. The *Platanus x hispanica* lining Westwood Blvd. remain with a new understory of colorful flowers. Patches of *Buchloe dactyloides*, a drought-tolerant lawn alternative, sprawls across the space inviting visitors a place to relax and escape the hustle and bustle of campus life. The design offers a variety of walking paths and resting areas for those passing through, meeting friends, or seeking solitude among the wildlife.

CONCEPTUAL SITE PLAN



NEW AMENITIES LEGEND

- 1 UCLA SIGNAGE
- 2 DG WALKING PATH
- 3 BIOSWALE
- 4 GATHERING AREA W/ SEAT WALLS
- 5 DROUGHT TOLERANT LAWN

- MIXED BORDERS
- Syrinchium angustifolium, Lupine bicolor, Stachys byzantina, Salvia chamaedryoides
 - Lupinus densiflorus, Achillea millefolium 'Moonshine', Solidago californica, Gazania rigens 'New Day Yellow'

PROPOSED/EXISTING TREES

<i>Platanus x hispanica</i> London Planetree 70-85'H x 50-70'W WUCOLS: Moderate	<i>Quercus agrifolia</i> Coast Live Oak 20-50'H x 20-50'W, California WUCOLS: Low	<i>Ginkgo biloba</i> Wadenhair Tree (male) 35-65'H x 25'W, China WUCOLS: Moderate	<i>Olea europaea 'Monher'</i> Majestic Beauty Fruitless Olive 25-30' x 25', Mediterranean WUCOLS: Low	<i>Grevillea 'Moonlight'</i> Moonlight Grevillea 8-12'H x 6-12'W, Australia WUCOLS: Low

MIXED BORDER BLUE

<i>Syrinchium angustifolium</i> Blue Eyed Grass 8-24'H x 6-12'W, California WUCOLS: Low	<i>Lupinus bicolor</i> Miniature Lupine 4'-2'H x 10"-1'H, California WUCOLS: Low	<i>Stachys byzantina</i> Lamb's Ear 1'H x 1'W, Middle East WUCOLS: Low	<i>Salvia chamaedryoides</i> Electric Blue Sage 12-18"H x 18-24"W, E. Mexico WUCOLS: Low

SHRUBS

<i>Leymus condensatus</i> 'Canyon Prince' Canyon Prince Wild Rye 2-3'H x 2-3'W, Australia WUCOLS: Low	<i>Antennaria 'Pawls Castle'</i> Pawls Castle Wormwood 2-3'H x 3-6'W, California WUCOLS: Low	<i>Ceanothus 'Concho'</i> Concho California Lilac 4'H x 4'W, California WUCOLS: Low	<i>Echium canadense</i> Pride of Madeira 5'H x 5'W, Madeira Islands WUCOLS: Low

BIOSWALE

<i>Muhlenbergia rigens</i> Deer Grass 3-5'H x 3-4'W, California WUCOLS: Low	<i>Juncus patens</i> Common Rush 2'H x 3'W, California WUCOLS: Low	<i>Carex glauca</i> Blue Sedge 6-12'H x 6-12'W, Europe/N. Africa WUCOLS: Low	<i>Epilobium canum</i> 'Summer Snow' Summer Snow California Fuchsia 10'H x 6-12'W, California WUCOLS: Low

LAWN

<i>Buchloe dactyloides</i> Buffalo Grass 1-8' Tall, Great Plains WUCOLS: Low

MIXED BORDER YELLOW

<i>Lupinus densiflorus</i> Golden Yarrow 24-26" High, Pacific Northwest WUCOLS: Moderate	<i>Achillea millefolium</i> 'Moonshine' Moonshine Yarr sw 1-2'H x 2'W, California WUCOLS: Low	<i>Solidago californica</i> California Goldenrod 1-2' High, California WUCOLS: Low	<i>Gazania rigens</i> 'New Day Yellow' Yellow Gazania 18"H x 12" W, South Africa WUCOLS: Low

<i>Kniphofia uvaria</i> 'Malibu Yellow' Malibu Yellow Poker Plant 3-4'H x 3-4'W, South Africa WUCOLS: Yellow	<i>Peritoma arborea</i> Bladderpod 4-5'H x 4-5'W, California WUCOLS: Low	<i>Encelia californica</i> California Bush Sunflower 3-4'H x 3-6'W, California WUCOLS: Low	<i>Pitiosporum crassifolium</i> 'Nana' Dwarf Karo 3'H x 3'W, Australia/New Zealand WUCOLS: Low