

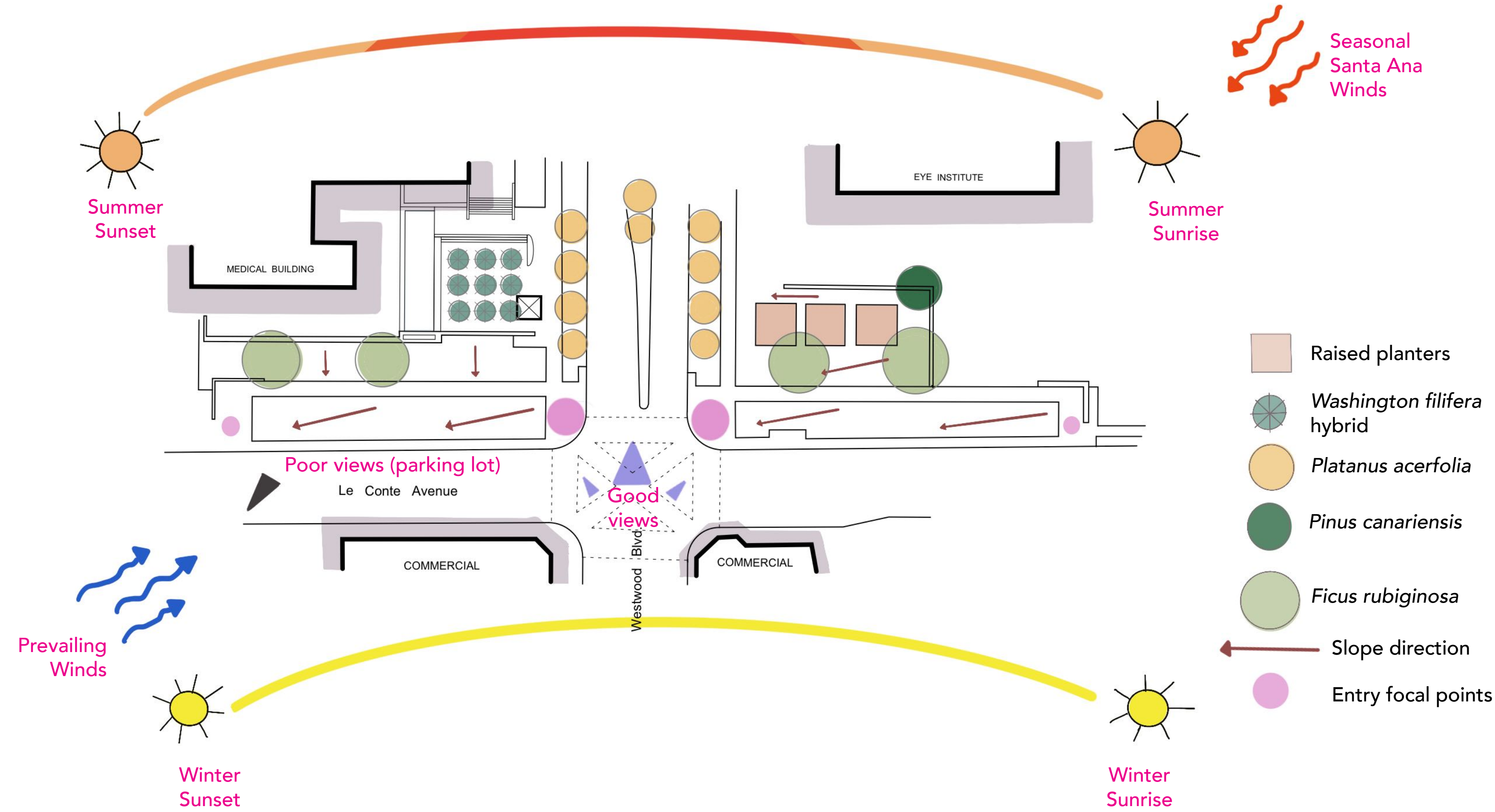
PLANTING DESIGN FOR UCLA SOUTH ENTRANCE

The Site

The site is the **primary southern entrance of the UCLA campus**, and is located at the intersection of Le Conte Ave and Westwood Blvd. It is a buzzing area with pedestrians and vehicles, and is adjacent to the Geffen Playhouse and the Westwood Village shopping and dining district.

The site's current landscaping is **forgettable** and water intensive. Plantings are **primarily turf and mature trees**, including *Ficus rubiginosa*, *Platanus acerfolia*, and *Pinus canariensis*, and shrubs such as *Loropetalum chinense* and a privet hedge. Other nearby plant species include *Washingtonia filifera*, *Magnolia grandiflora*, and a bamboo hedge.

Sunset zone: 23
Soil type: sandy loam

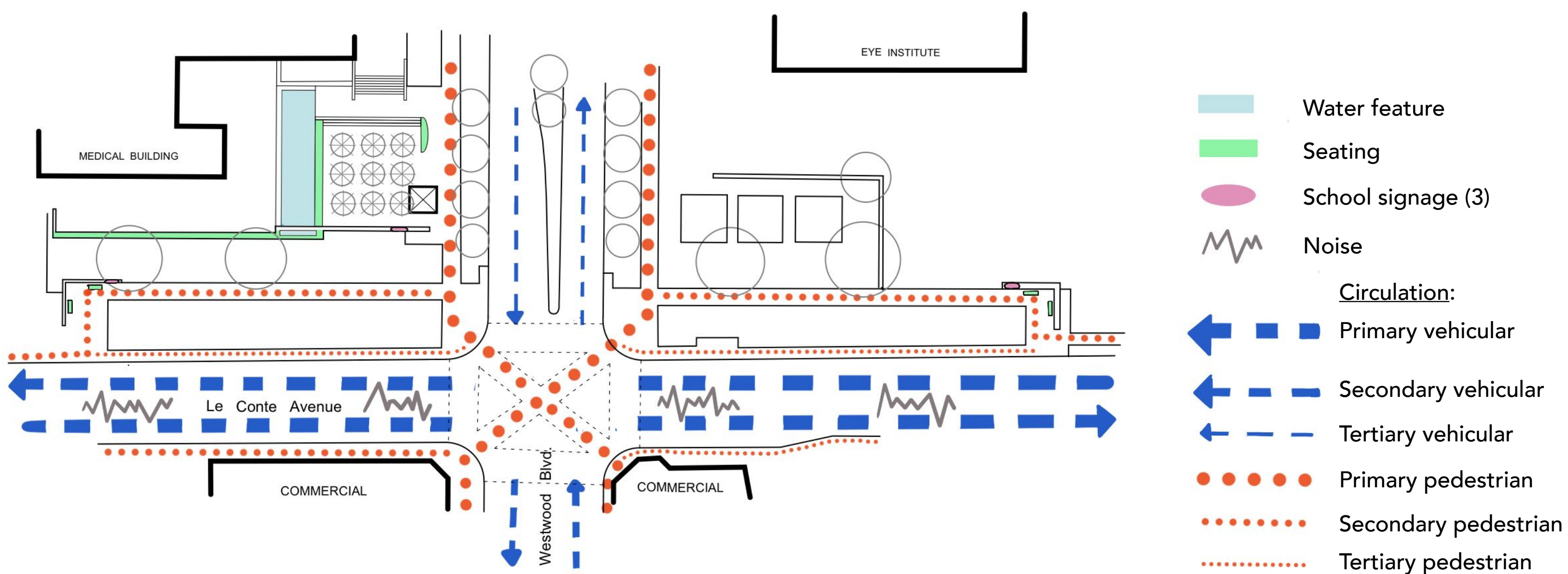


Design Narrative

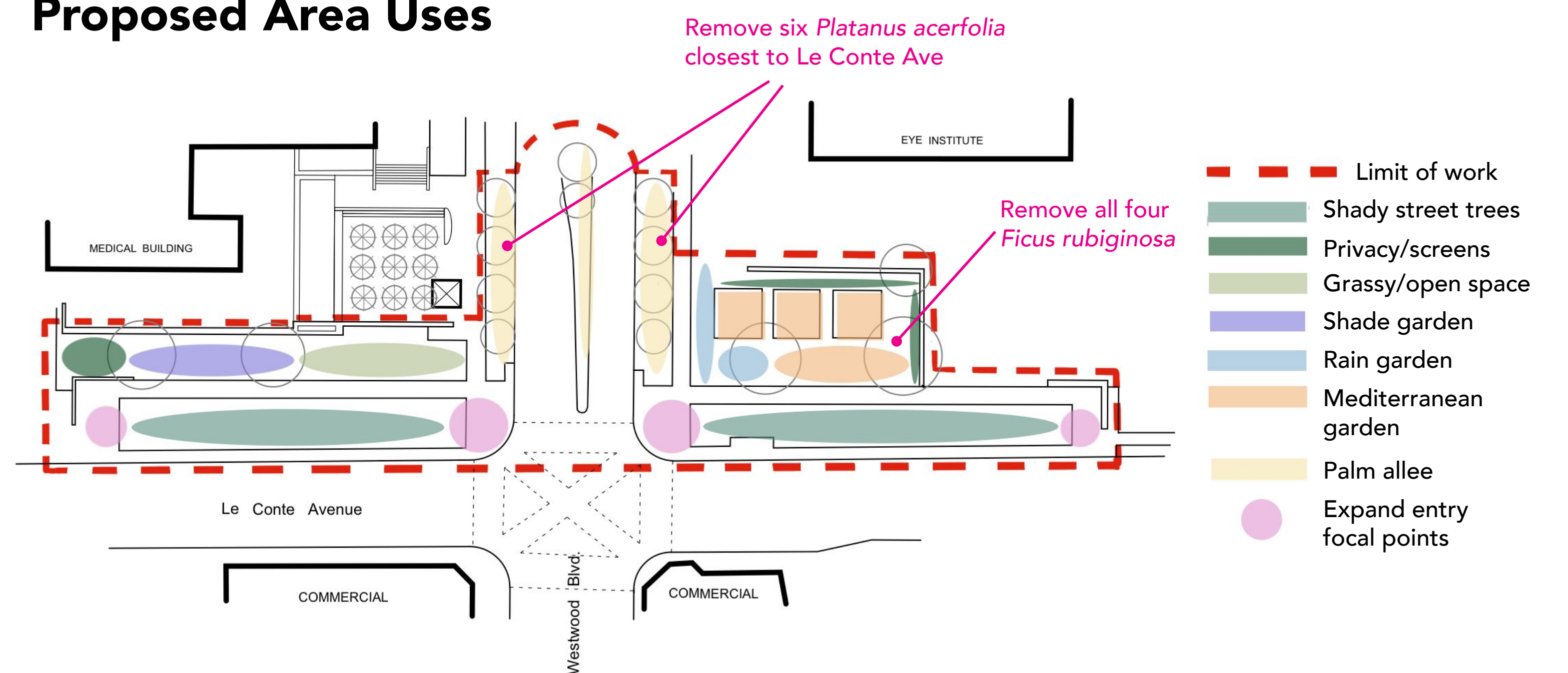
The goal of the site design was to create a **'statement' entrance** primarily through planting.

Statement Entrance: A **diagonal motif** was used so that angled sight lines would direct interest and activity toward the entrance. Pedestrian **entry points were widened at an angle**, and **colored square pavers** were added to accentuate the geometry. Angled plantings and paths of decomposed granite along Le Conte Ave lead to an **allee of *Washingtonia filifera***.

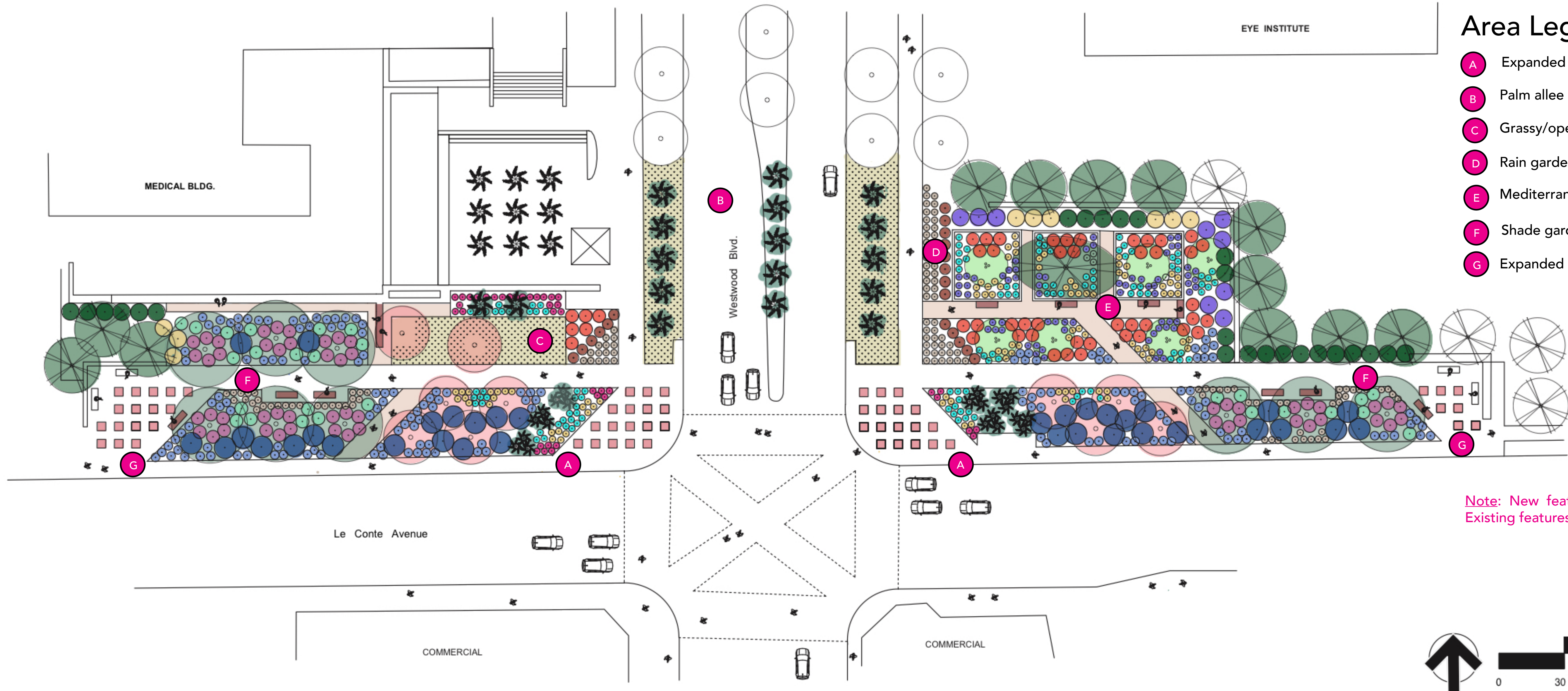
Drought-Tolerant Planting with Purpose: As you approach from either end of Le Conte Ave, you will first see the **dense shade** provided by *Quercus agrifolia*. The oaks then transition to the **seasonal color** of *Koelreuteria bipinnata*, and then to the lower plantings of *Chamaerops humilis*. This succession from dense and evergreen, to colorful and deciduous, to petite and sunny is meant to draw attention to the entrance that is punctuated by the new palm allee. The palm allee also harks back to the early days of UCLA, when palms lined Westwood Blvd.



Proposed Area Uses



PLANTING DESIGN FOR UCLA SOUTH ENTRANCE



Plant Palette (22 plants, including 10 California natives)

7 Trees

<p>Quercus agrifolia Coast live oak 35'+H x 35'+W Origin: California Yellow-White; Winter-Spring WUCOLS: Very Low</p>	<p>Pinus pinea Italian stone pine 50'H x 50'W Origin: Mediterranean region Inconspicuous flowers WUCOLS: Low</p>
<p>Koeleruteria bipinnata Chinese flame tree 35'H x 25'W Origin: China Yellow; Fall WUCOLS: Medium, but tolerates low</p>	<p>Olea europaea 'Swan Hill' Swan Hill olive 25'+H x 20'+W Origin: Mediterranean cultivar Inconspicuous flowers WUCOLS: Low</p>
<p>Chamaerops humilis Mediterranean fan palm 15'H x 12'W Origin: Western Mediterranean Inconspicuous flowers WUCOLS: Low</p>	<p>Pinus canariensis Canary Island pine 80'H x 25'W Origin: Canary Islands Inconspicuous flowers WUCOLS: Low</p>
<p>Washingtonia filifera California fan palm 40'H x 12'W Origin: California White; Winter-Spring WUCOLS: Medium, but tolerates low</p>	

10 Shrubs

<p>Echium candicans Pride of Madeira 6'H x 8'W Origin: Madeira Islands Blue-Purple; Spring-Summer WUCOLS: Low</p>	<p>Hesperaloe parviflora Red yucca 4'H x 5'W Origin: Southern Texas and Mexico Red; Spring-Summer WUCOLS: Very low</p>
<p>Berberis 'Golden Abundance' Golden Abundance barberry 8'H x 8'W Origin: California Yellow; Winter-Spring WUCOLS: Low</p>	<p>Agave attenuata 'Boutin Blue' Boutin Blue Foxtail Agave 3'H x 3'W Origin: Mexico Monocarpic WUCOLS: Low</p>
<p>Westringia fruticosa Coast rosemary 6'H x 8'W Origin: Australia White; Spring WUCOLS: Low</p>	<p>Lavendula x intermedia 'Provence' Blue lavender 3'H x 3'W; Origin: Mediterranean Purple; Year-round WUCOLS: Low</p>
<p>Ceanothus 'Joyce Coulter' Joyce Coulter ceanothus 5'H x 10'W; Origin: California Blue; Winter-Spring WUCOLS: Low</p>	<p>Santolina chamaecyparissus Lavender cotton 2'H x 3'W; Origin: Spain and Eastern Mediterranean Yellow; Spring WUCOLS: Low</p>
<p>Woodwardia fimbriata Giant chain fern 6'H x 6'W Origin: California Blooms N/A WUCOLS: Medium</p>	<p>Ribes vibernifolium Evergreen currant 3'H x 6'W Origin: California Maroon; Spring WUCOLS: Very low</p>

5 Grasses/Grass-like

<p>Muhlenbergia rigens Deer grass 5'H x 5'W Origin: California Grass spikelet WUCOLS: Low</p>	<p>Juncus patens Wire grass 2'H x 3'W Origin: California Brown; Spring-Fall WUCOLS: Low, but tolerates medium</p>
<p>Leymus condensatus 'Canyon Prince' Canyon Prince wild rye 4'H x 4'W Origin: California Blue; Summer WUCOLS: Low</p>	<p>Carex praegracilis California field sedge 2'H x 2'W Origin: California Green; Spring WUCOLS: Medium, but tolerates low</p>
<p>Chondropetalum tectorum 'El Campo' El Campo mat rush 3'H x 3'W Origin: South Africa Brown; Summer-Fall WUCOLS: Low</p>	