

Melnitz Stairs | Site Redesign

UCLA Campus

Mackenzie Doyle
Landscape Design 2 | Winter 2022

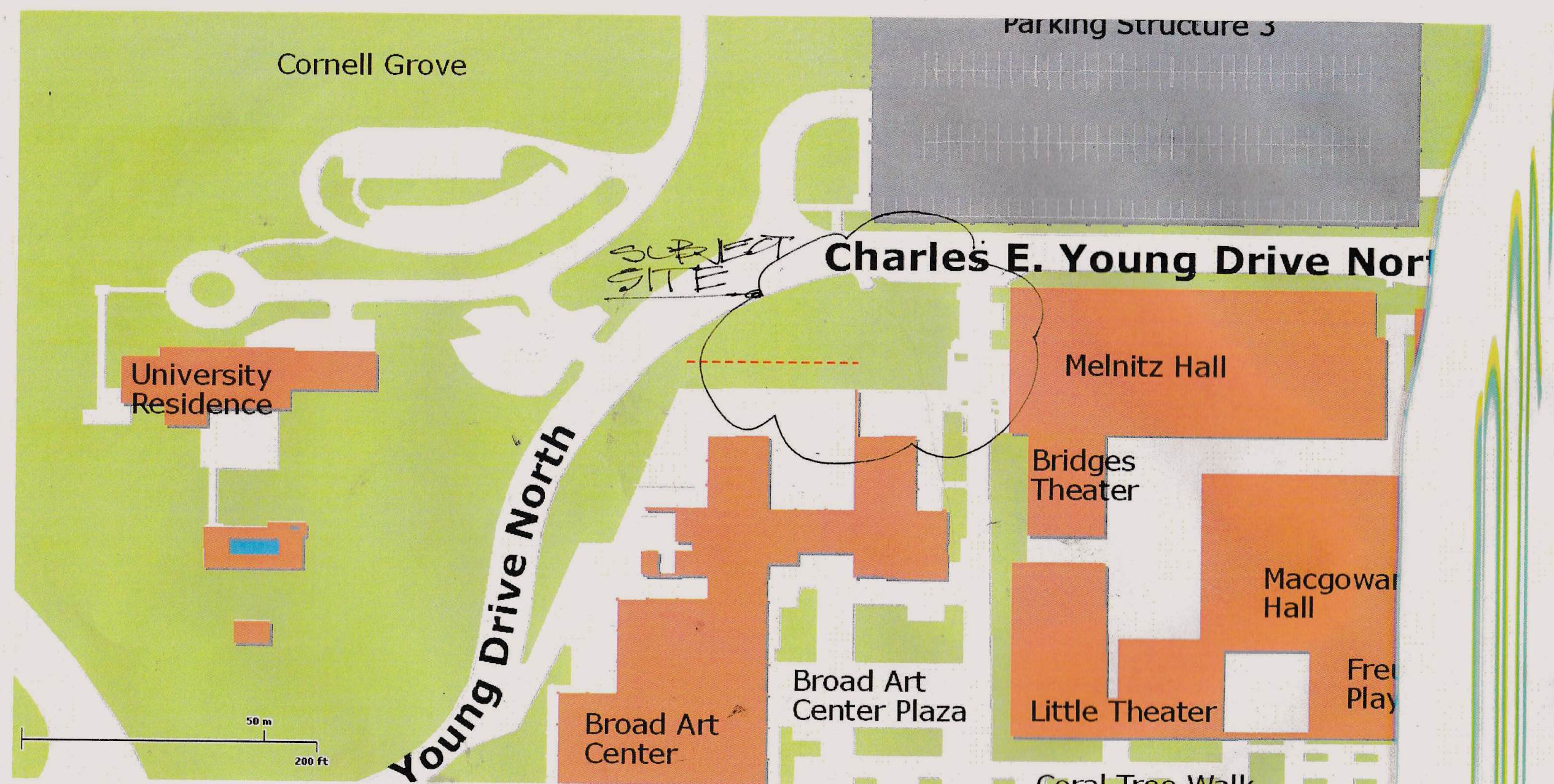
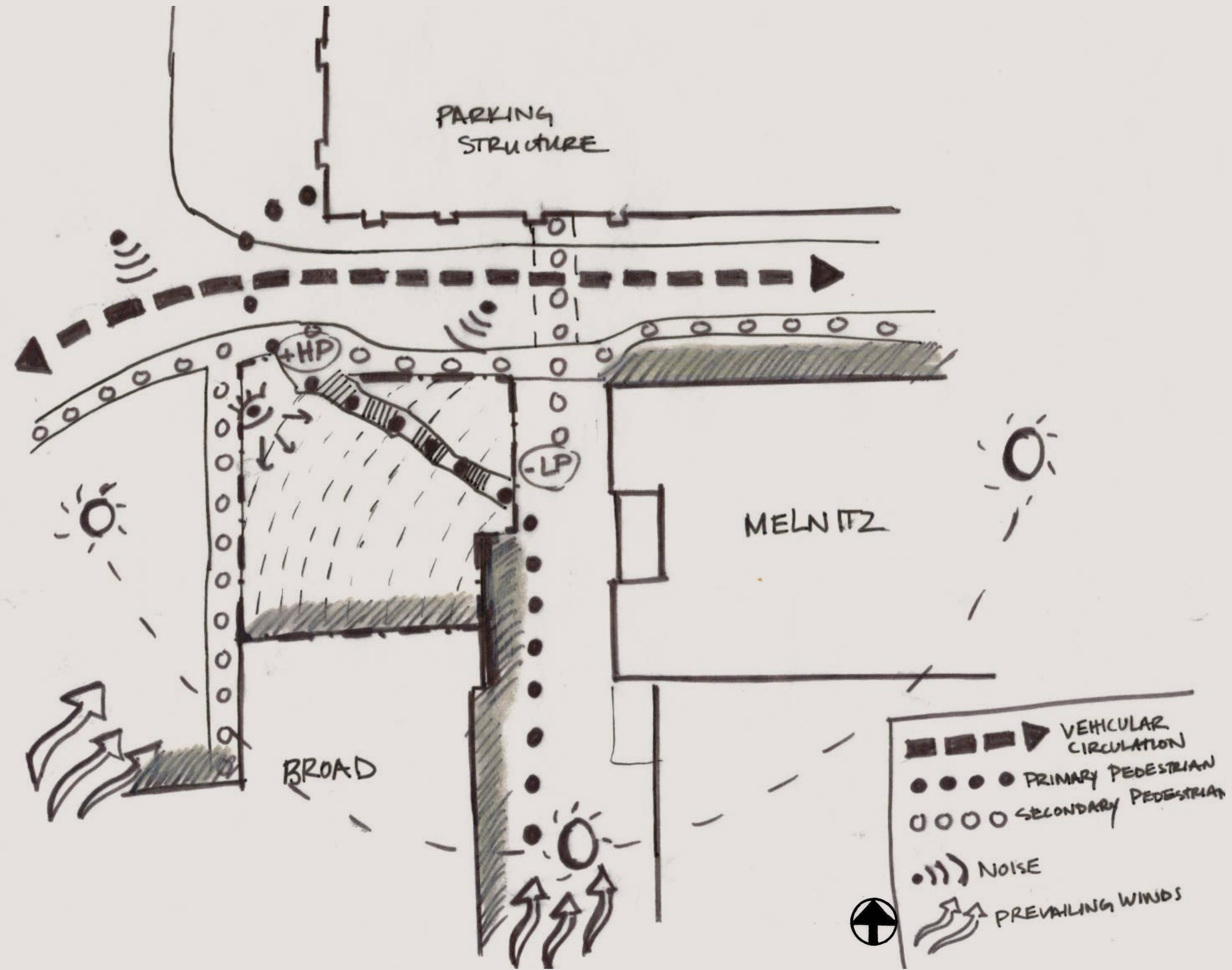
site location



VICINITY MAP



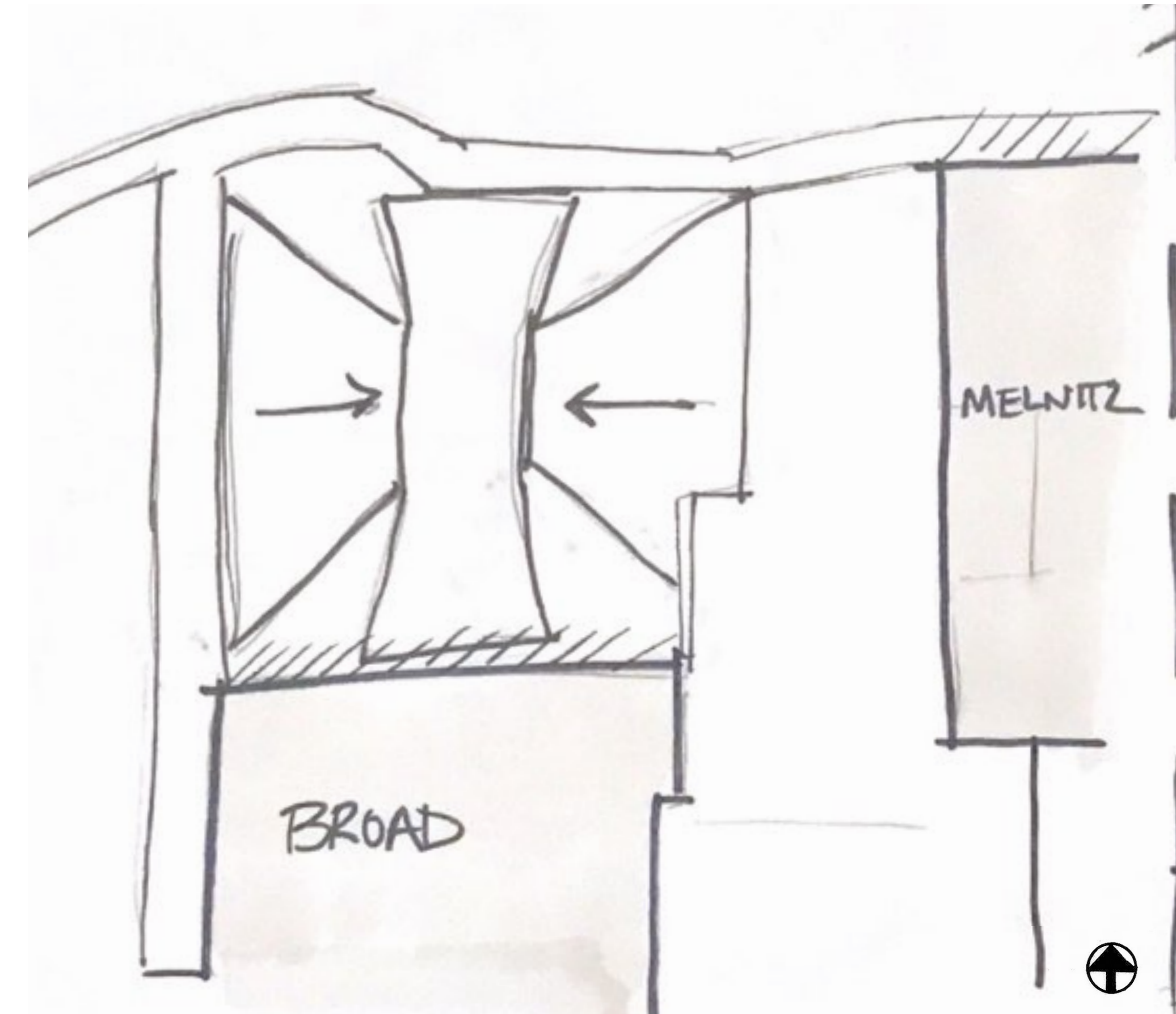
site analysis



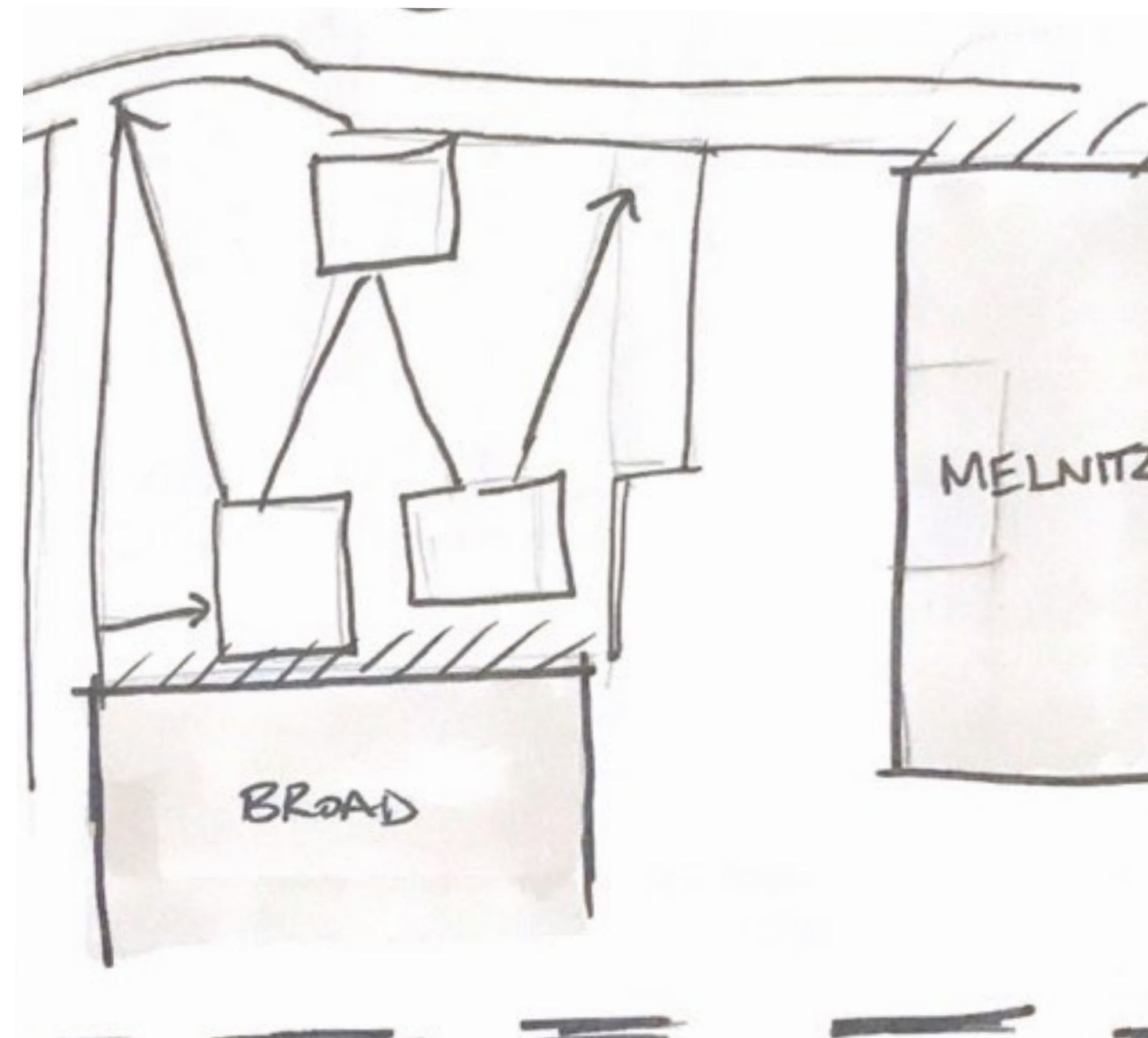
LOCATION MAP



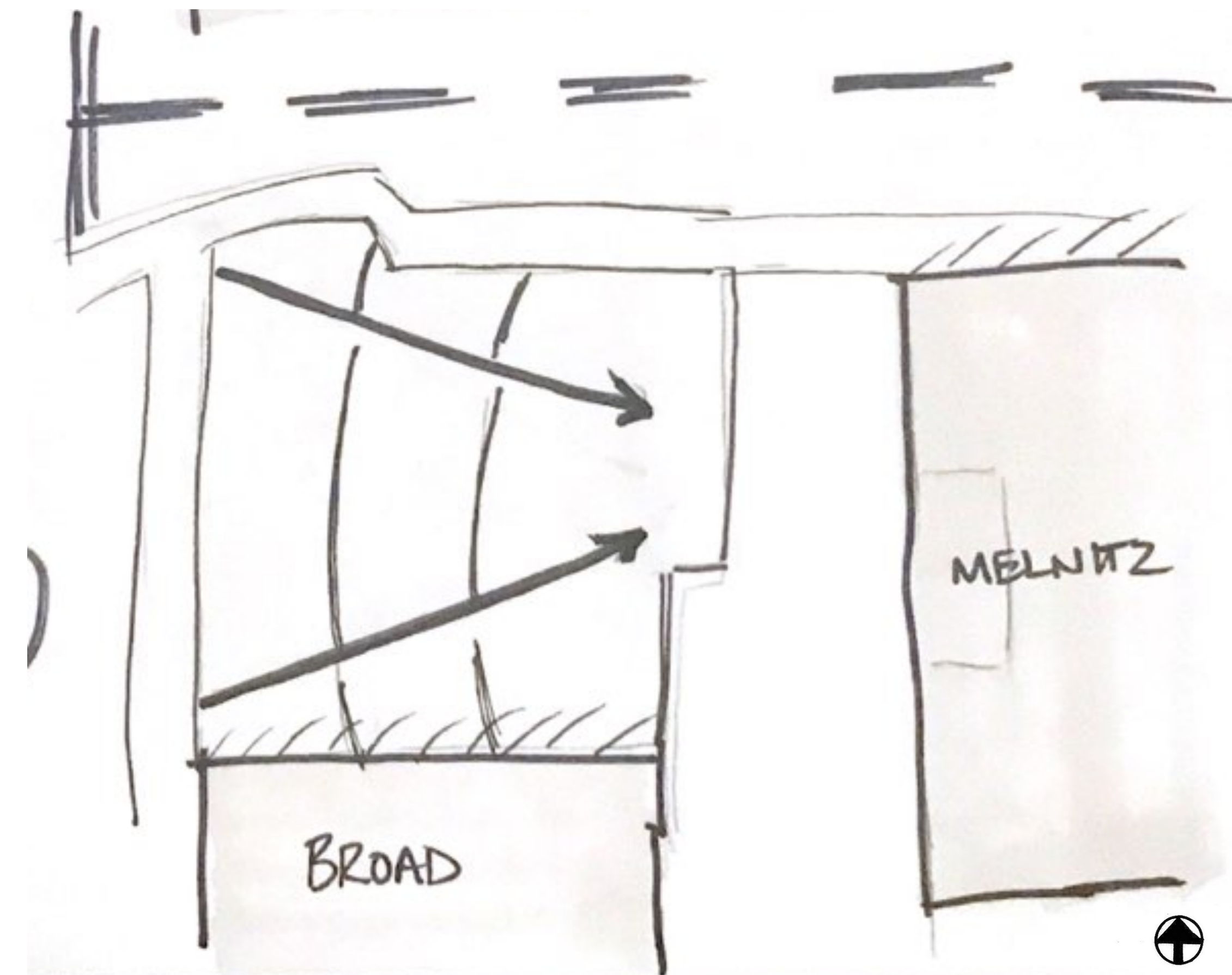
design concepts



concept 1

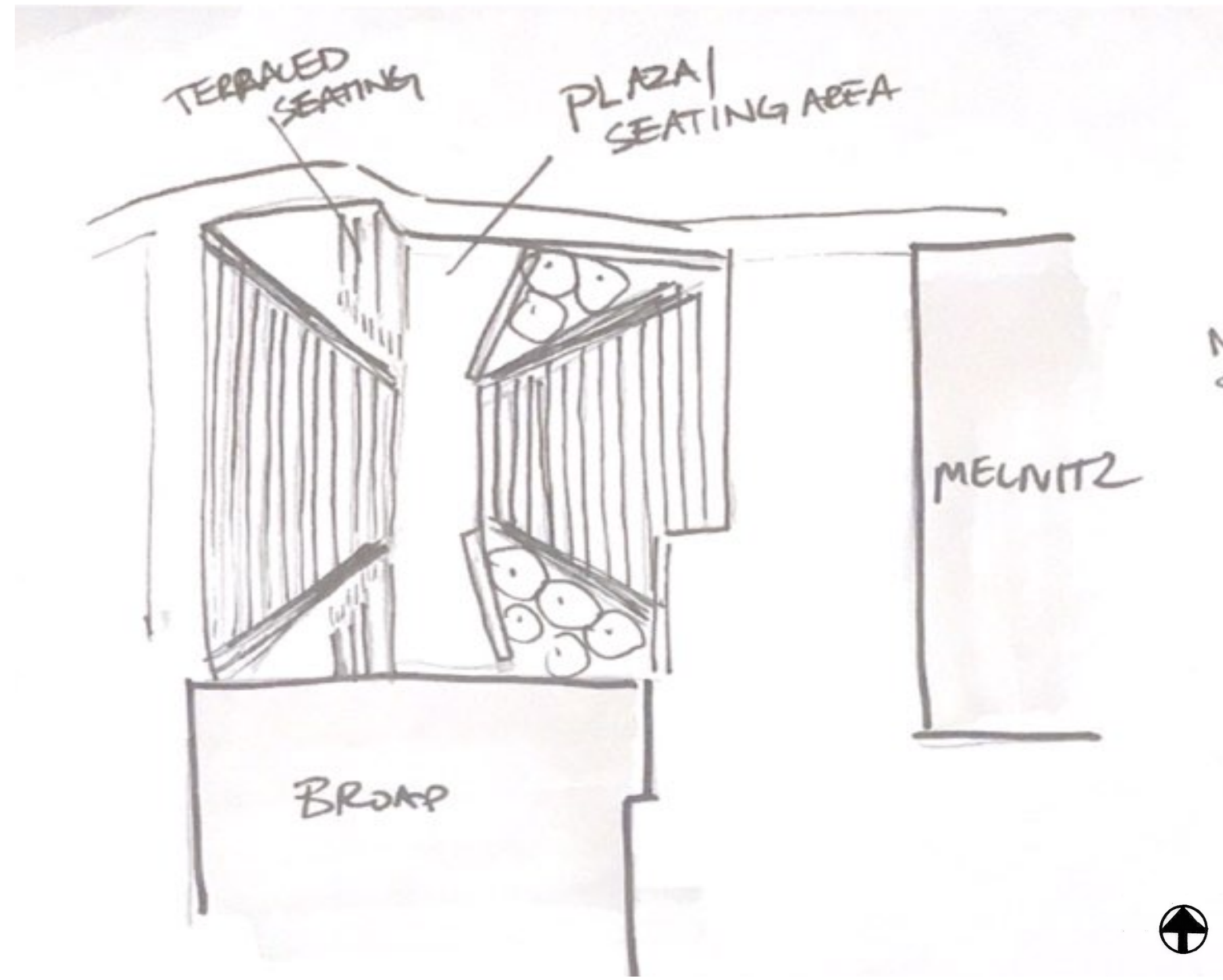


concept 2



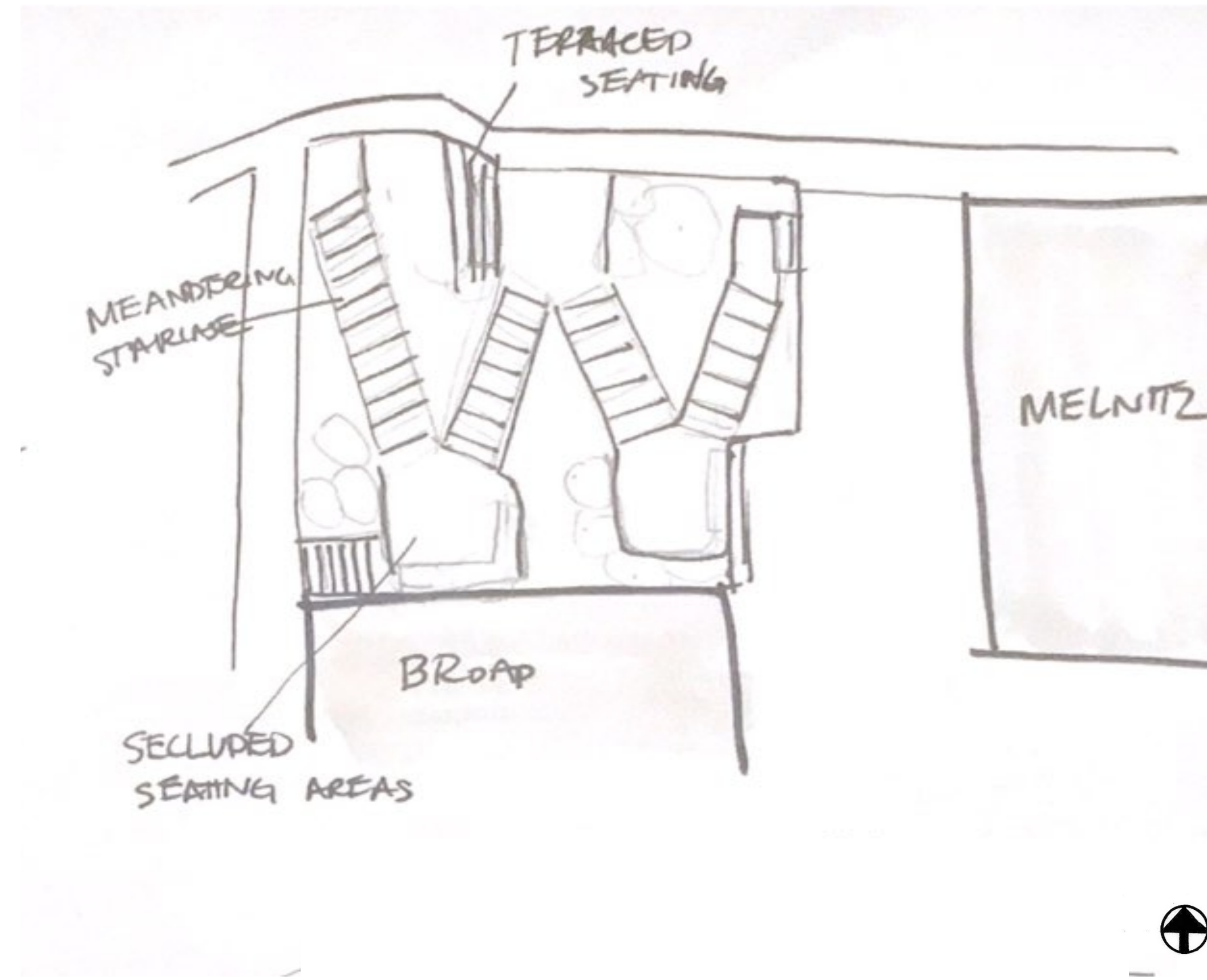
concept 3

design development



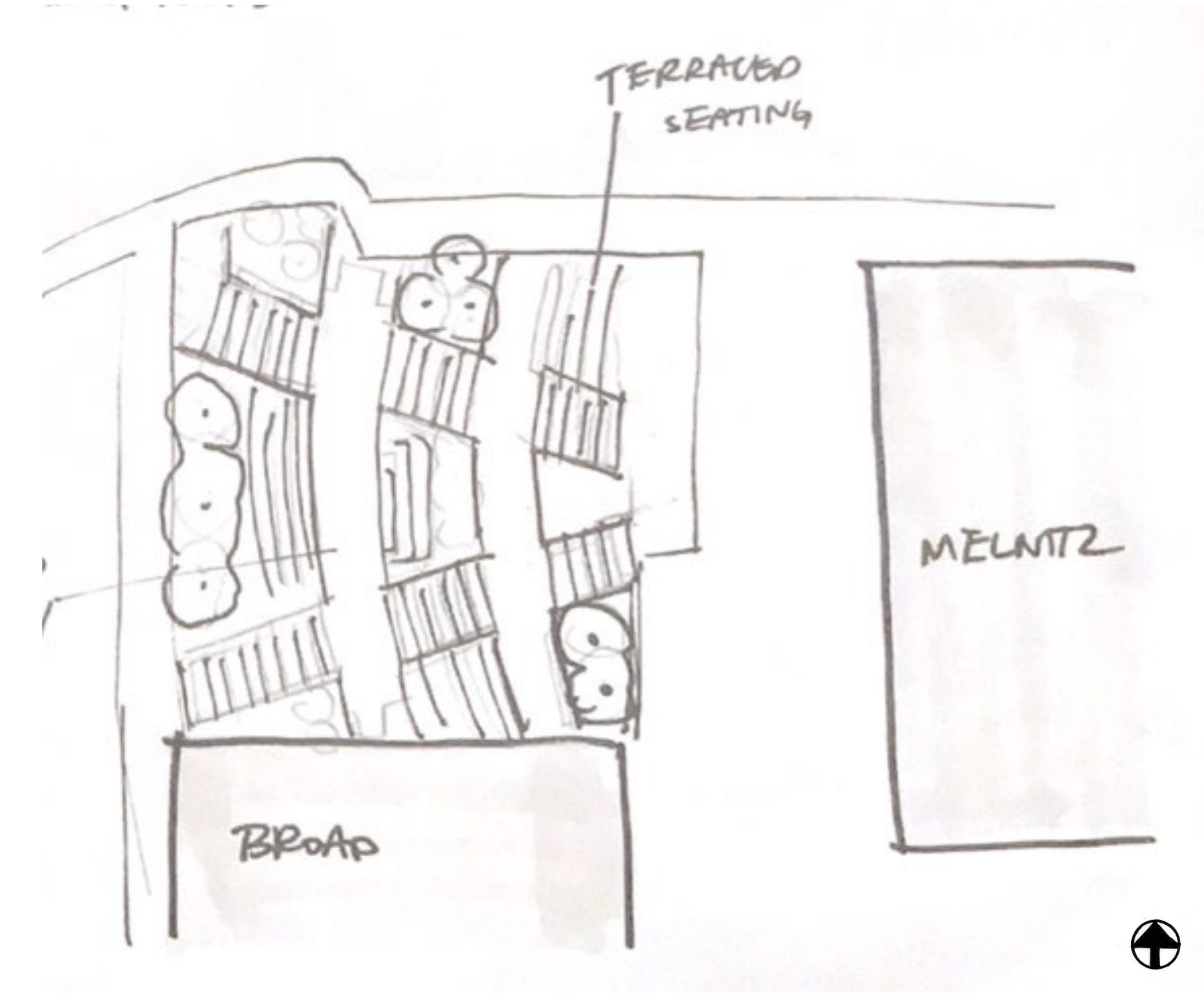
concept 1

Concept one features a large central stair case with a plaza mid-way up. This design offers the dual function of a gathering space and a large artery for circulation directly through the site.



concept 2

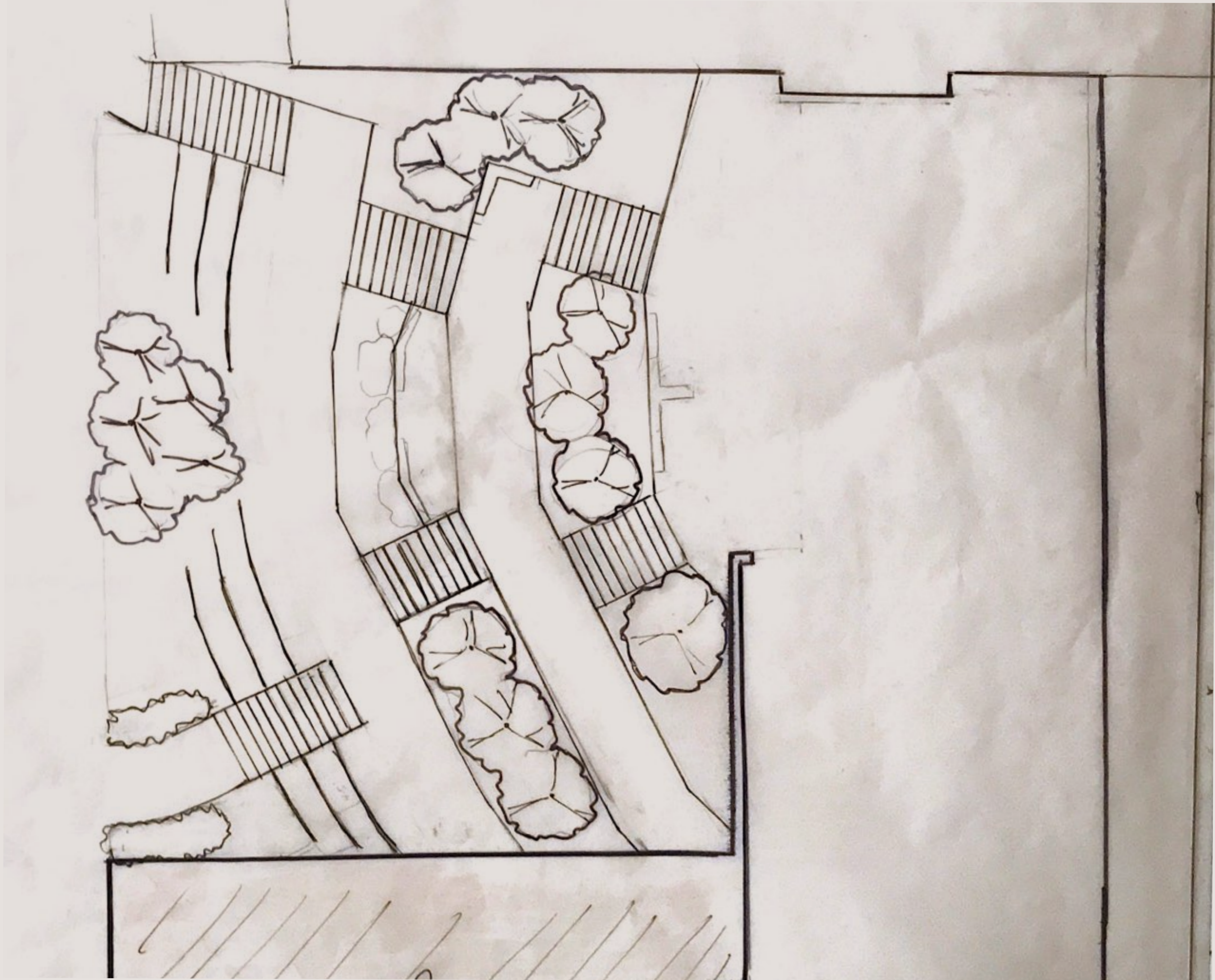
Concept two features a meandering stair case that zig-zags across the site, punctuated by small gathering areas at each landing. These landings offer visitors a secluded place to sit and relax while moving through the space.



concept 3

Concept three functions as a gathering place and also offers direct circulation through the site. Two opposing stair cases connect both the parking area and Broad Hall to Melnitz Hall. Throughout the site visitors will find terraced seating and open plaza spaces with benches and tables for gathering, studying, and socializing.

final concept



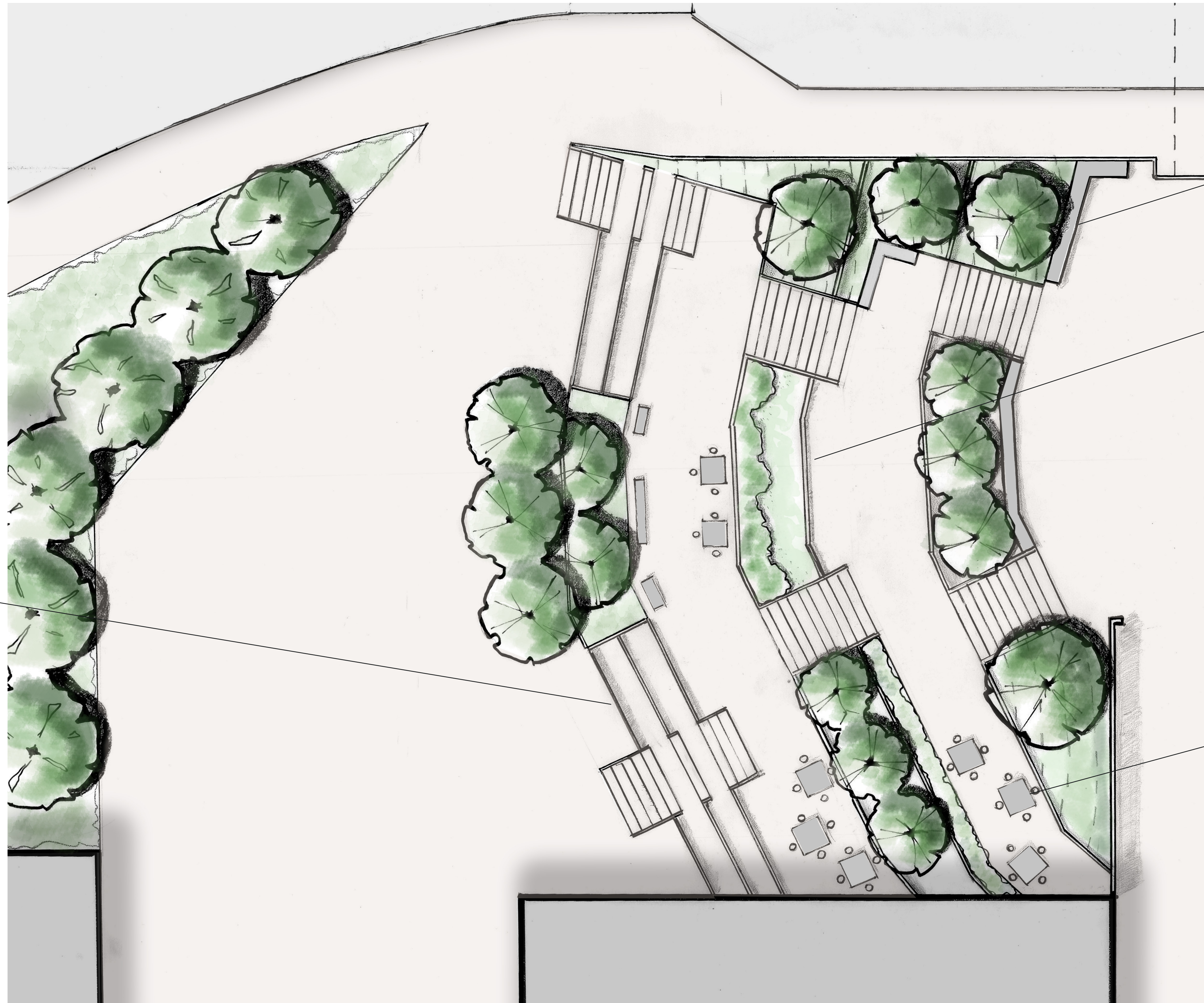
final site plan

terraced seating

benched seating

seat wall

tables



0' 5' 10' 20'

scale: 1" = 10'



final site
plan
with context

Charles E. Young
Drive

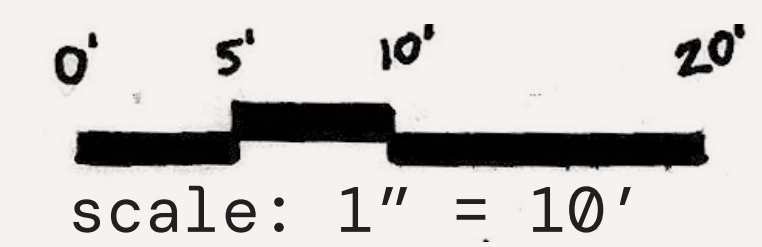
parking
structure

pedestrian
tunnel

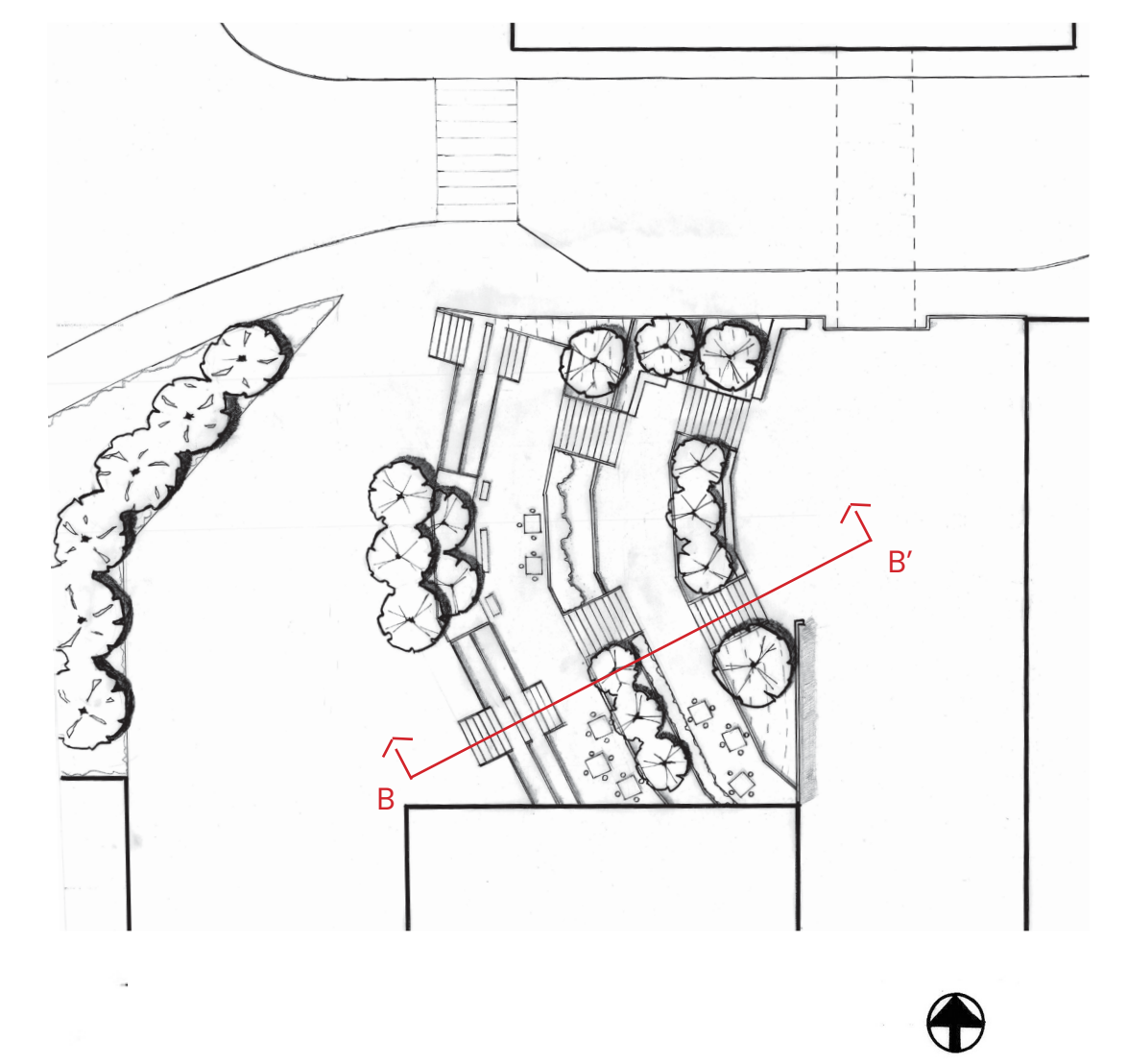
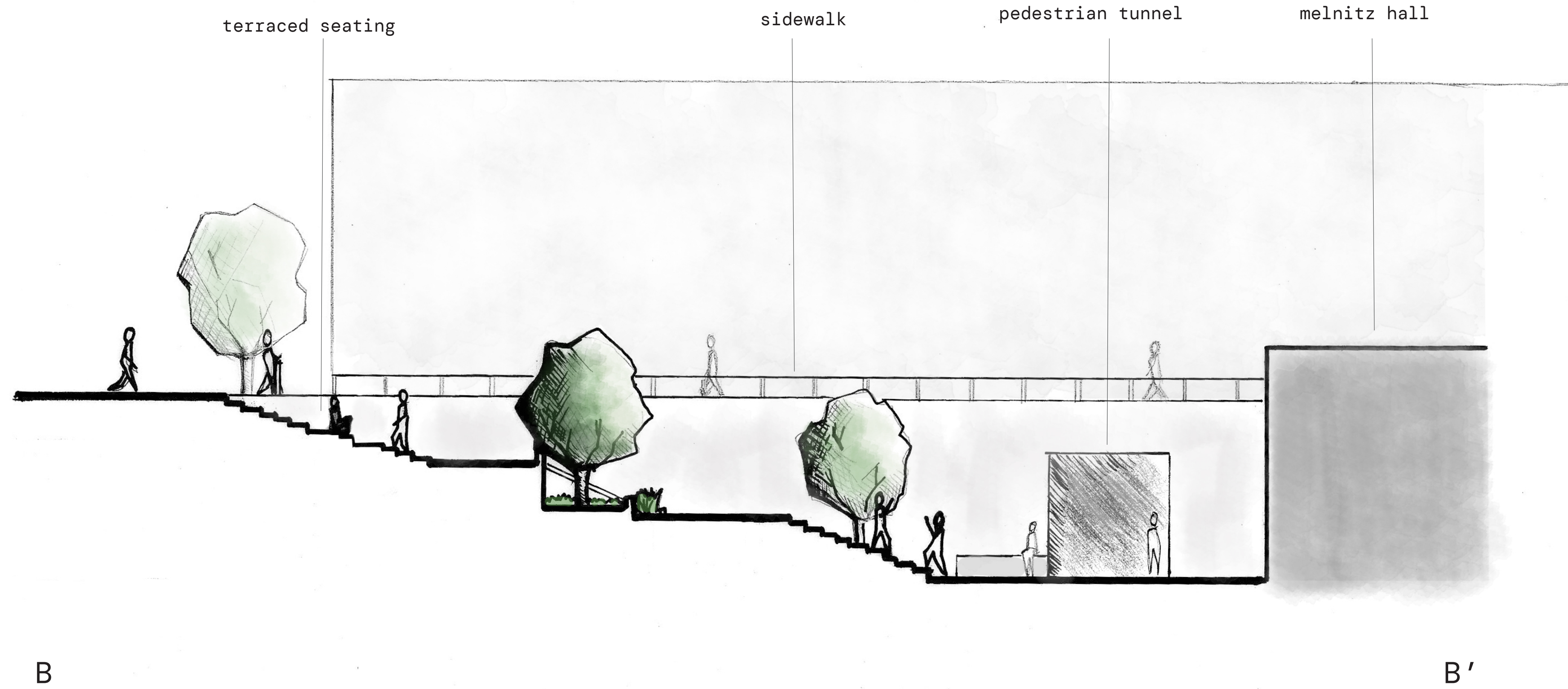
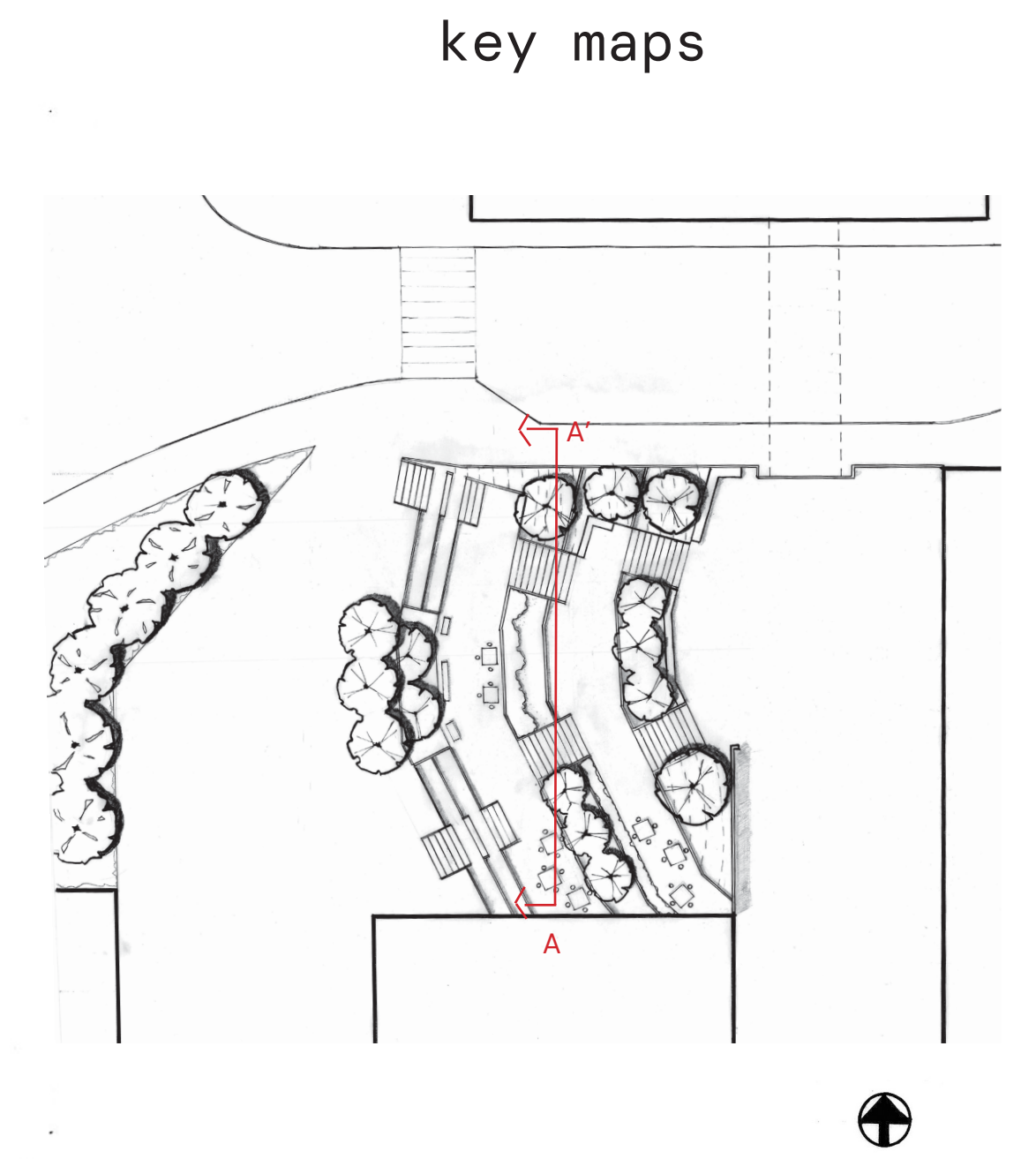
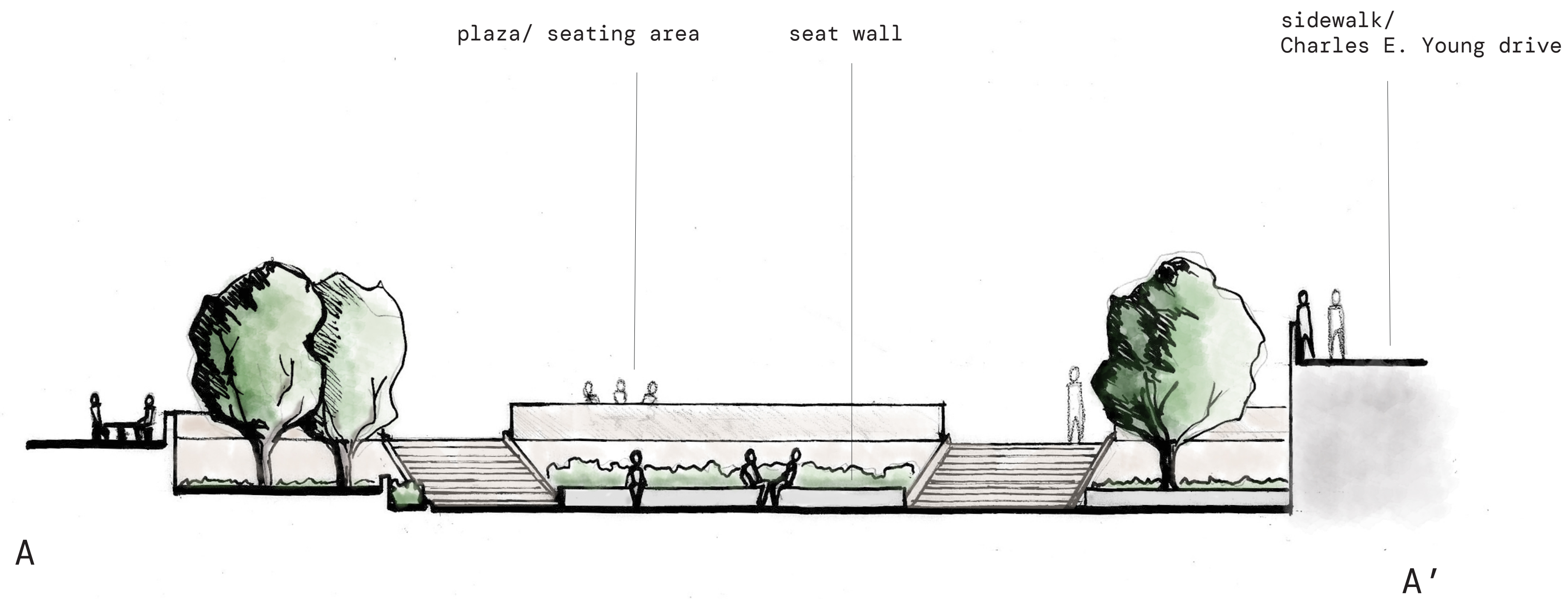
Melnitz Hall

art wall

Broad Hall



section/ elevations



0' 5' 10' 20'
scale: 1" = 10'

perspective sketches

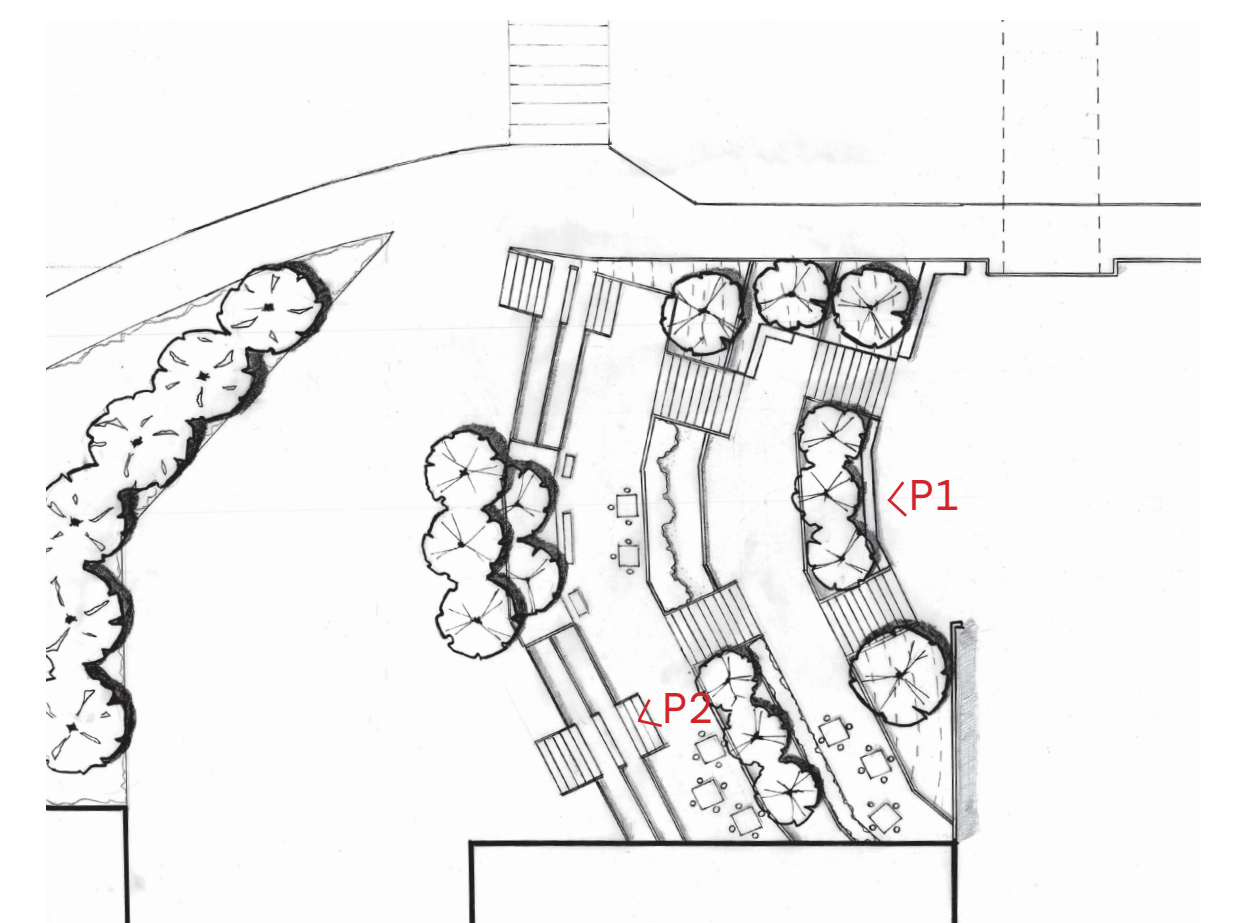


perspective 1



perspective 2

key map



thank you