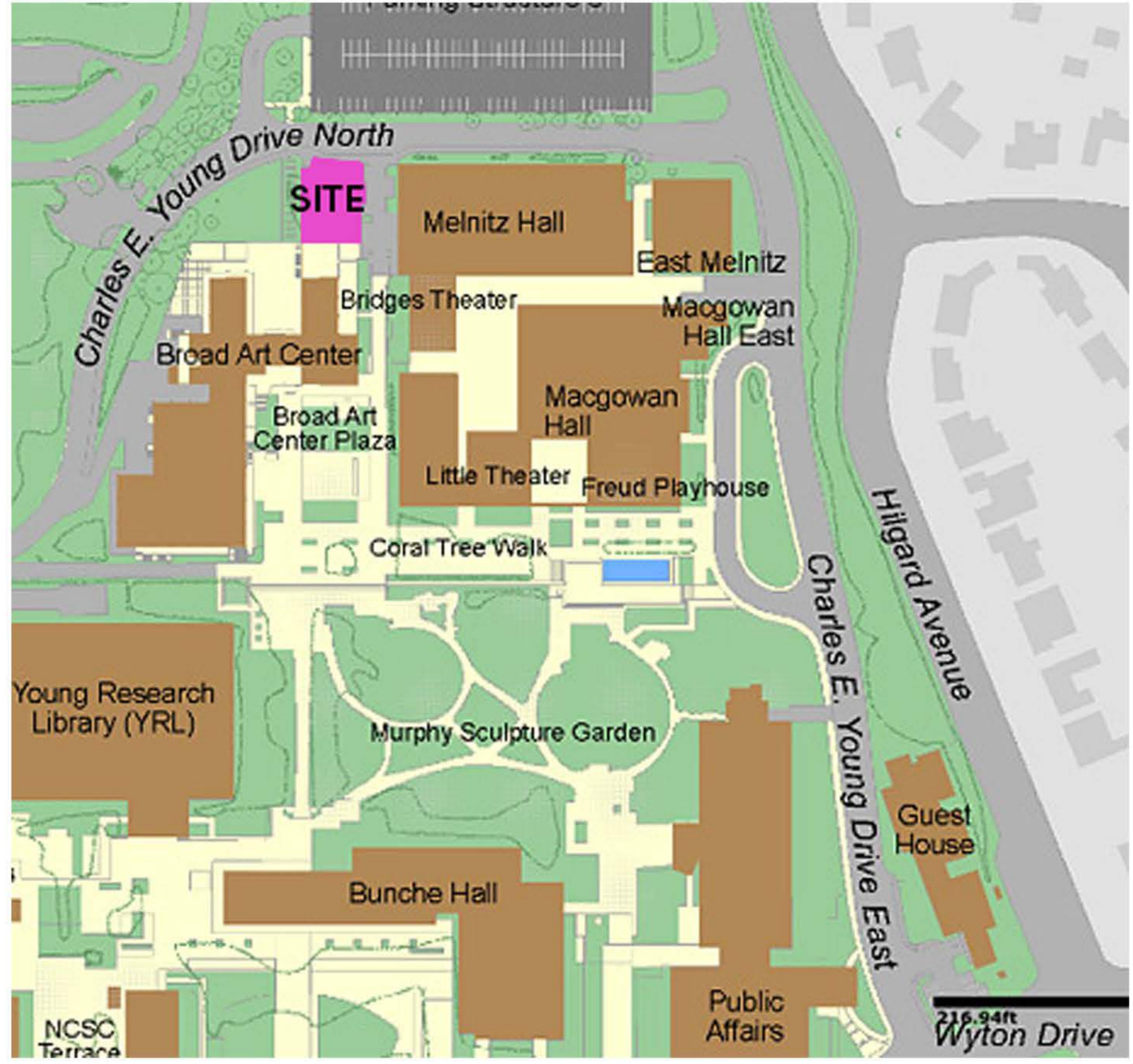
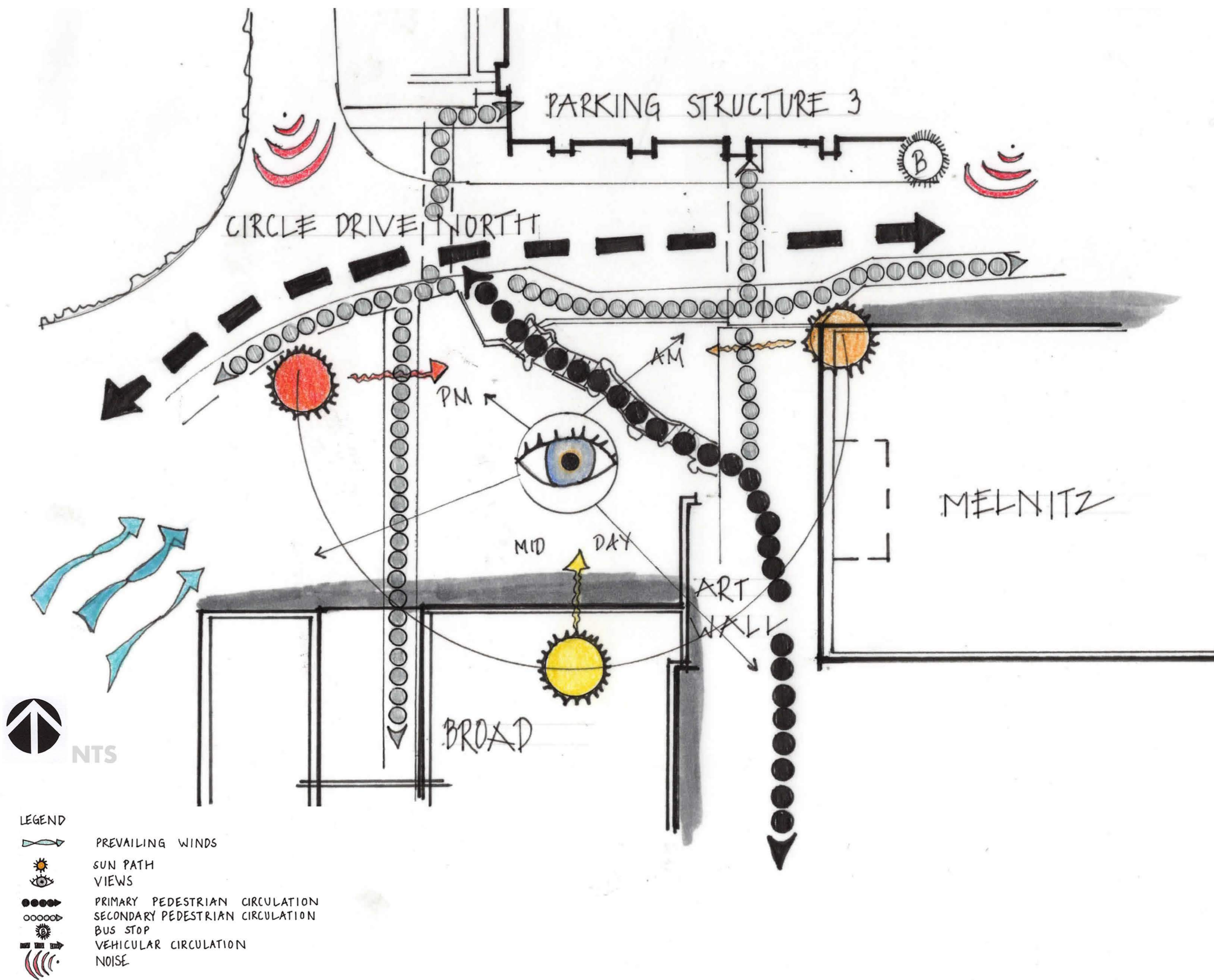


MELNITZ STAIRS REIMAGINED

LANDSCAPE DESIGN 2 ARCH-X 471.B

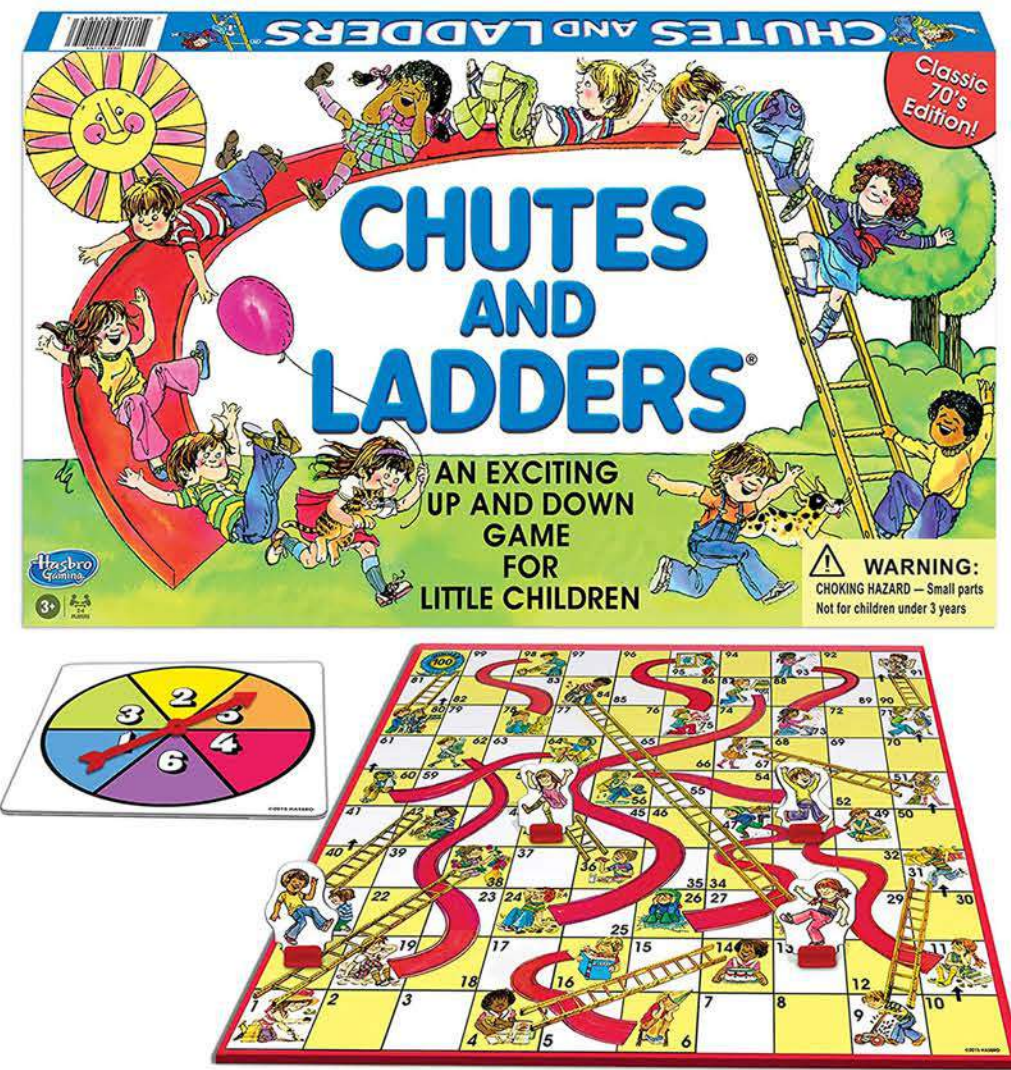
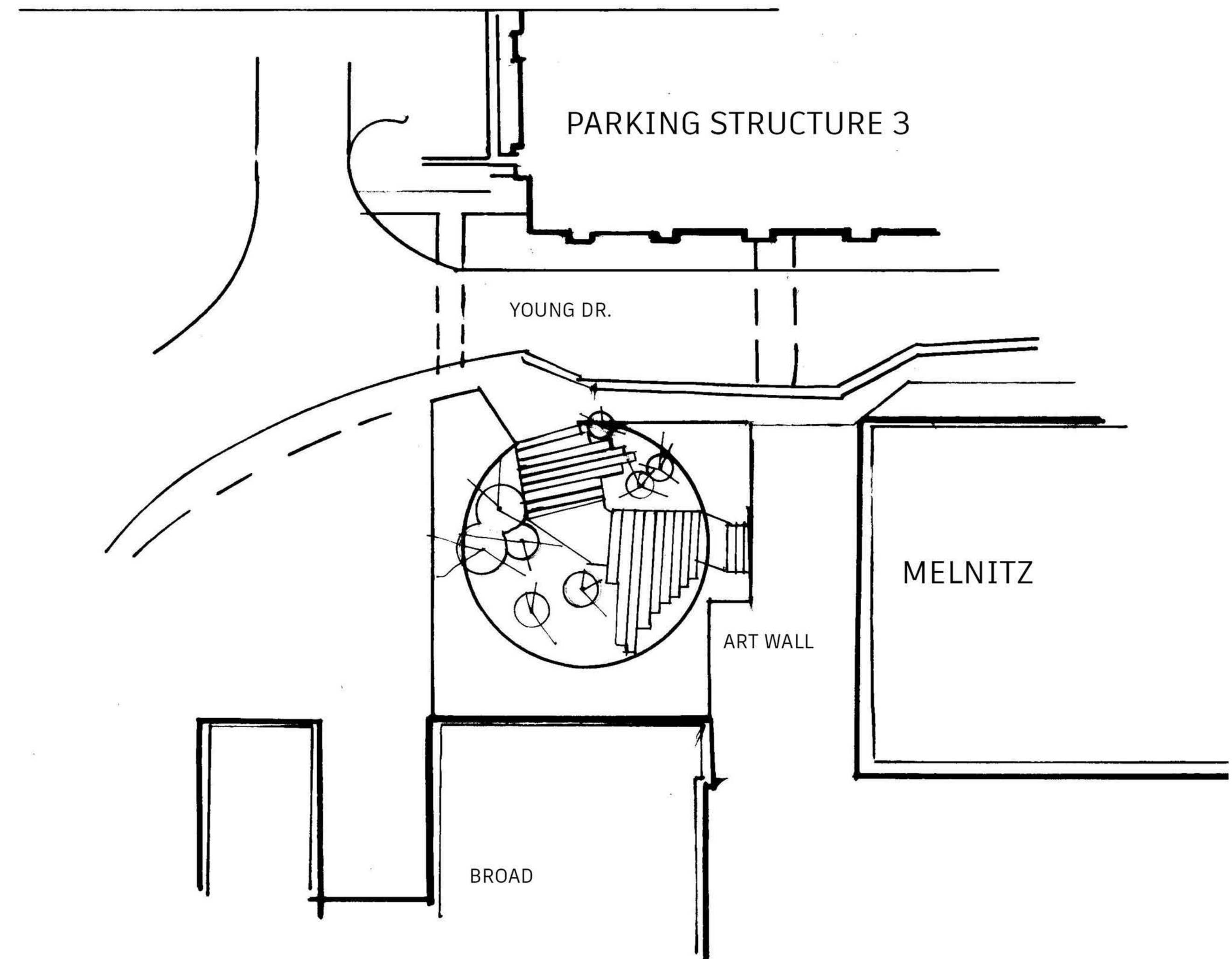
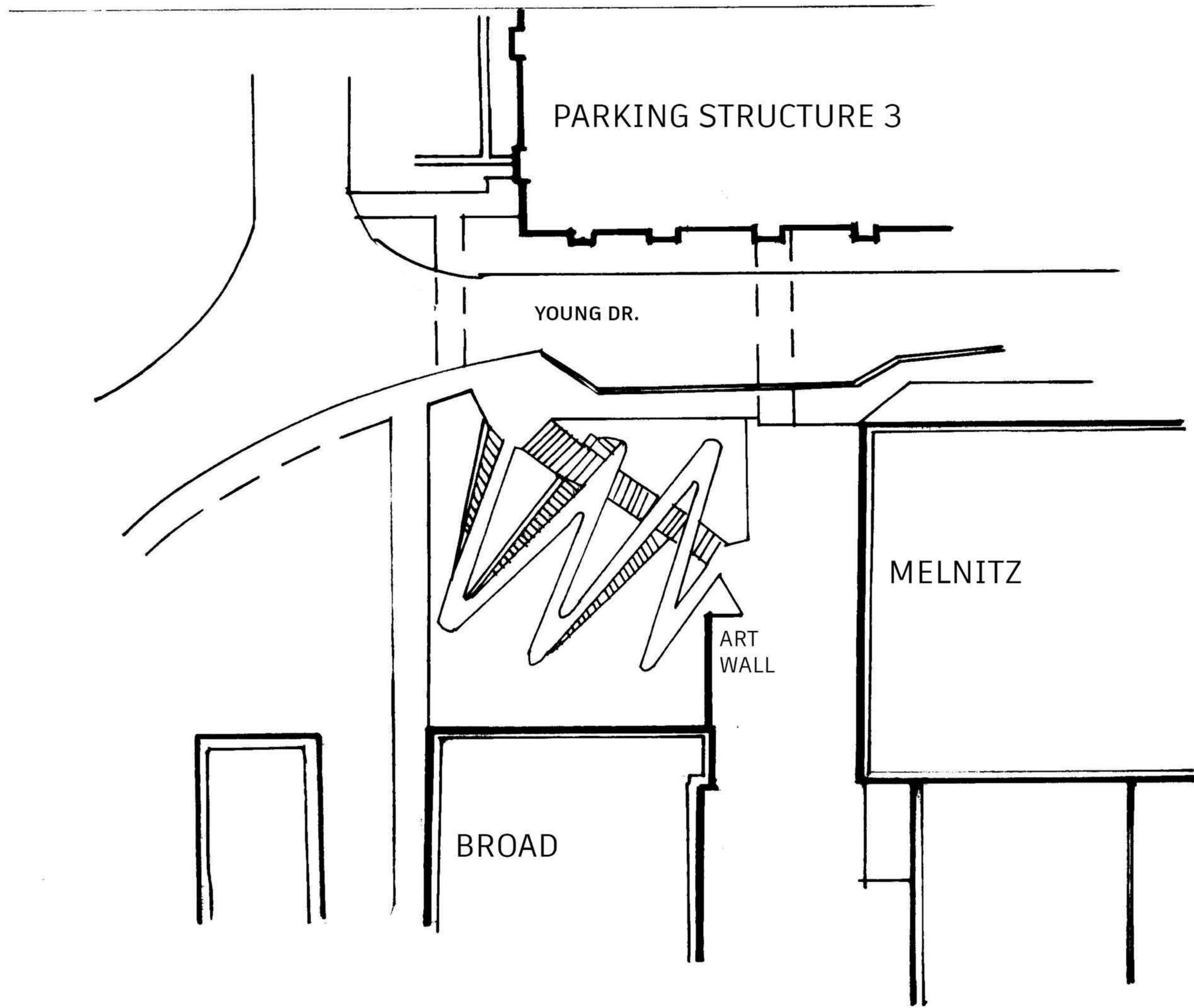
TRACY WOLK WINTER 2022
JIM SMITH, INSTRUCTOR

SITE ANALYSIS



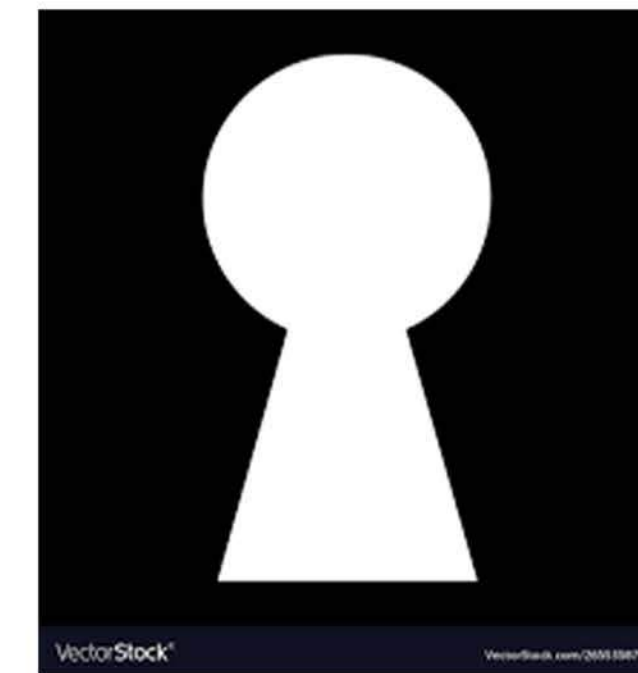
Melnitz Stairs Reimagined
 Tracy Wolk LD2 Winter 2022
 Jim Smith, Instructor

Concept Ideas



CHUTES AND LADDERS

WINDING PATH WITH STAIRS
FOR PASSIVE AND ACTIVE
USE

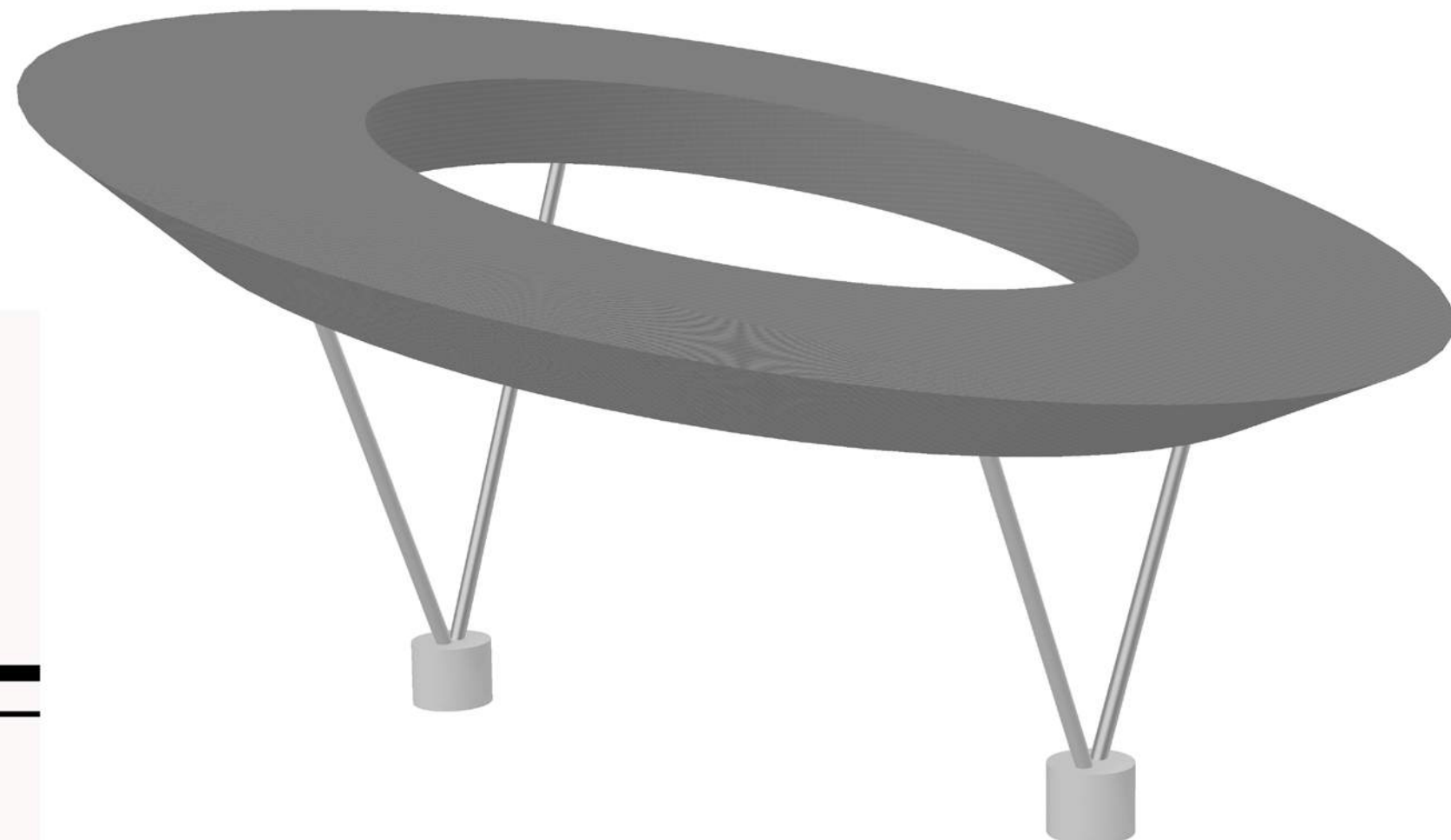
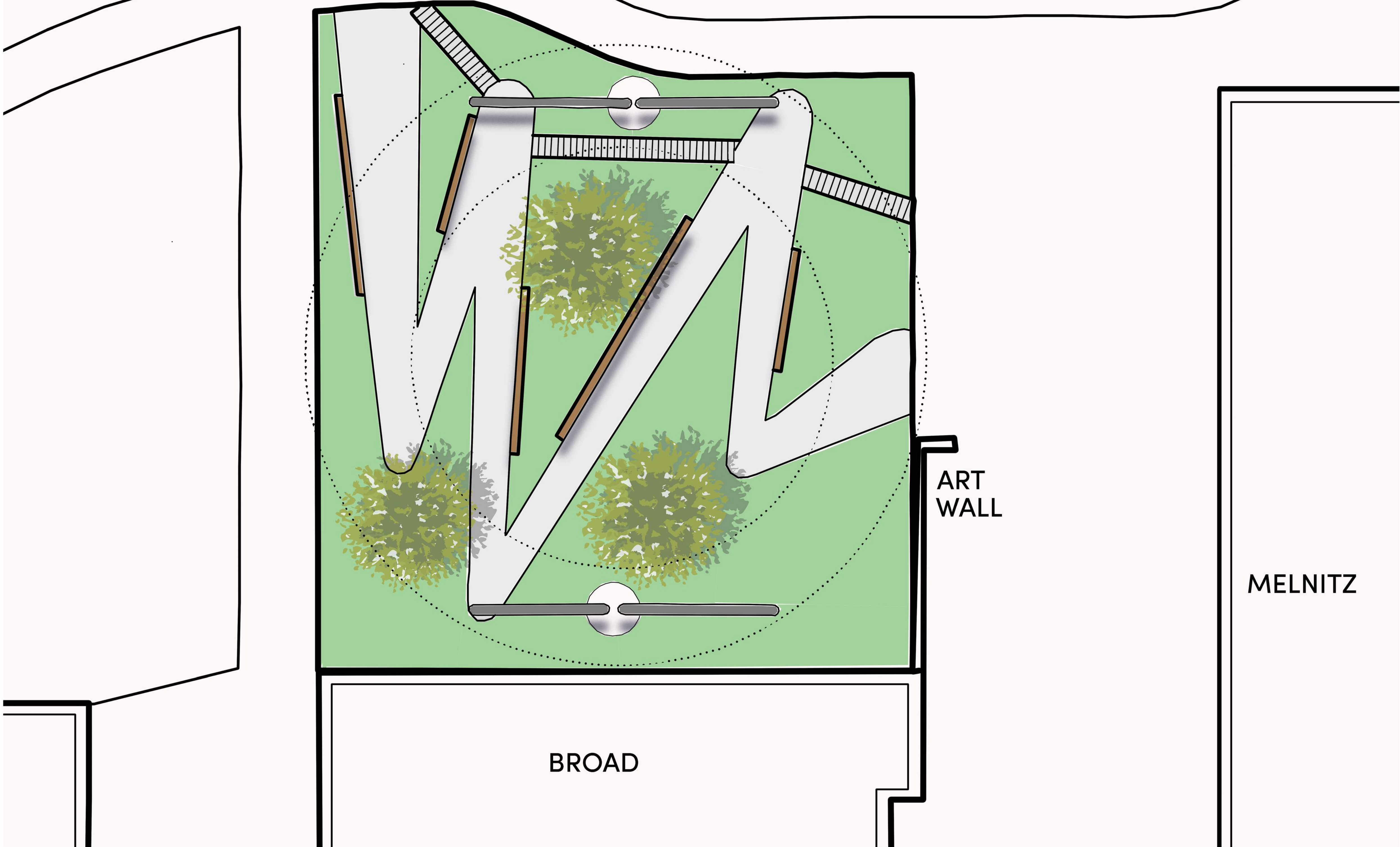


KEYHOLE PASSAGE

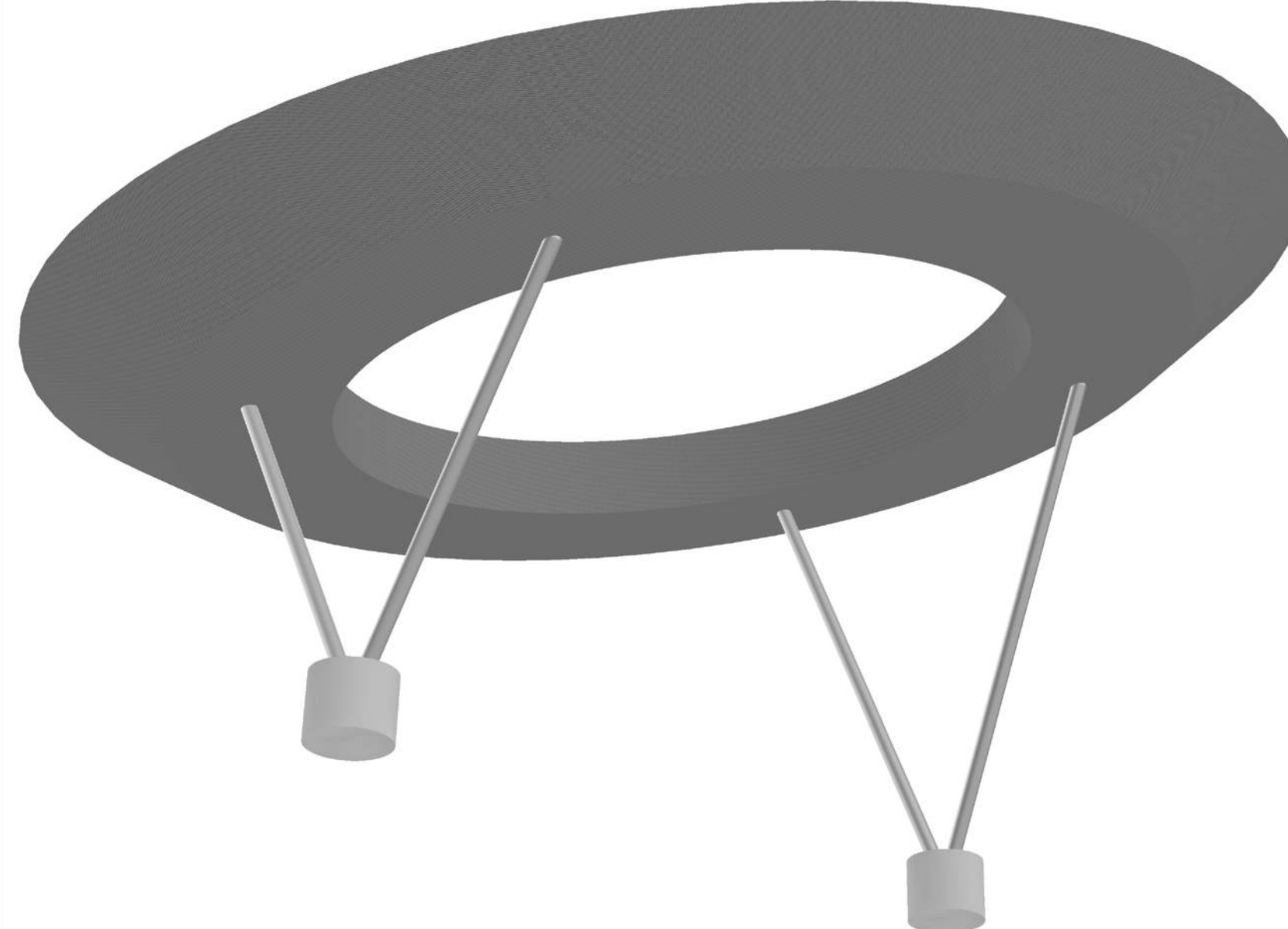
CREATE A SHADE
SHADE STRUCTURE
OVER MELNITZ TO ACT
AS A HEIGHT BUFFER BETWEEN PARKING
AND BROAD

Melnitz Stairs Reimagined
Tracy Wolk LD 2 Winter 2022
Jim Smith, Instructor

CHARLES E. YOUNG DRIVE



LARGE SCALE LIGHT SCULPTURE



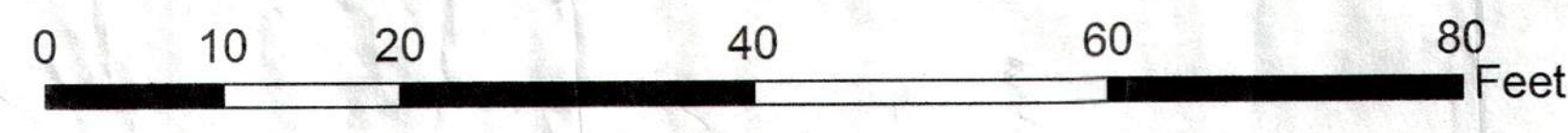
MELNITZ

BROAD

ART WALL

Melnitz Stairs Reimagined

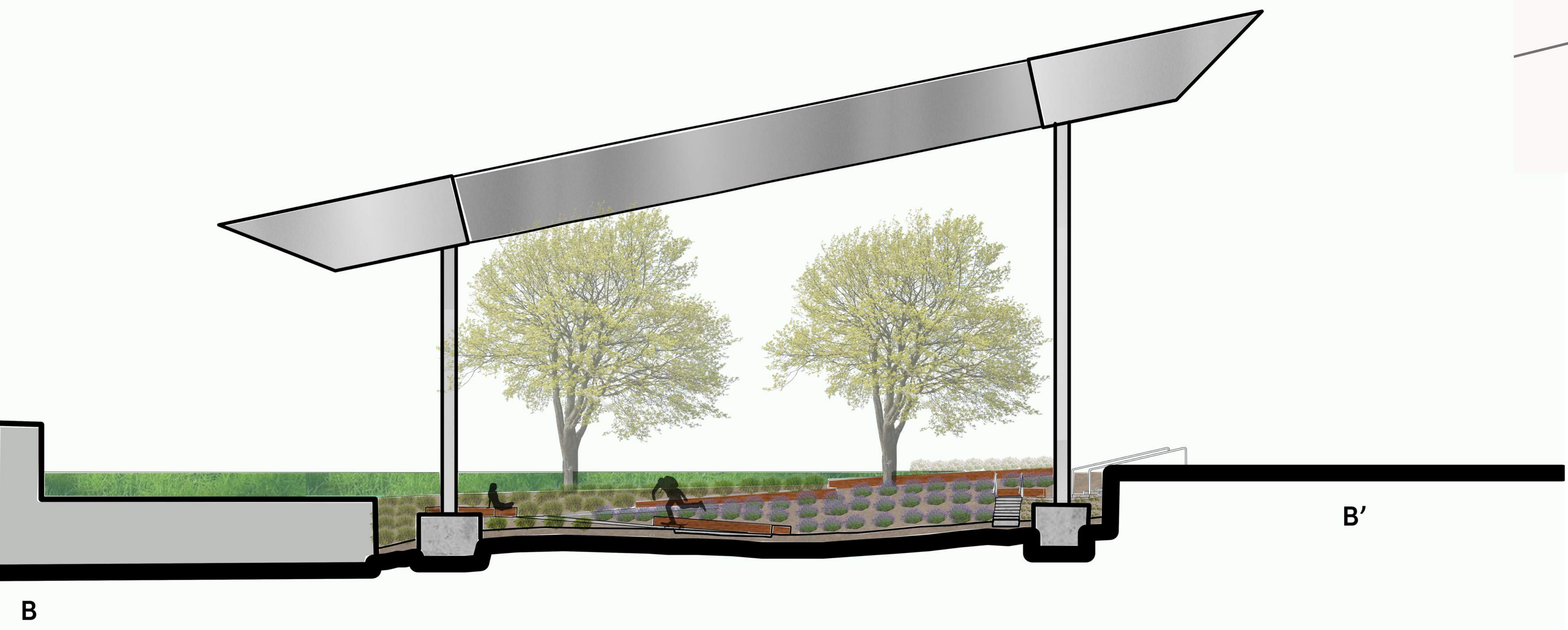
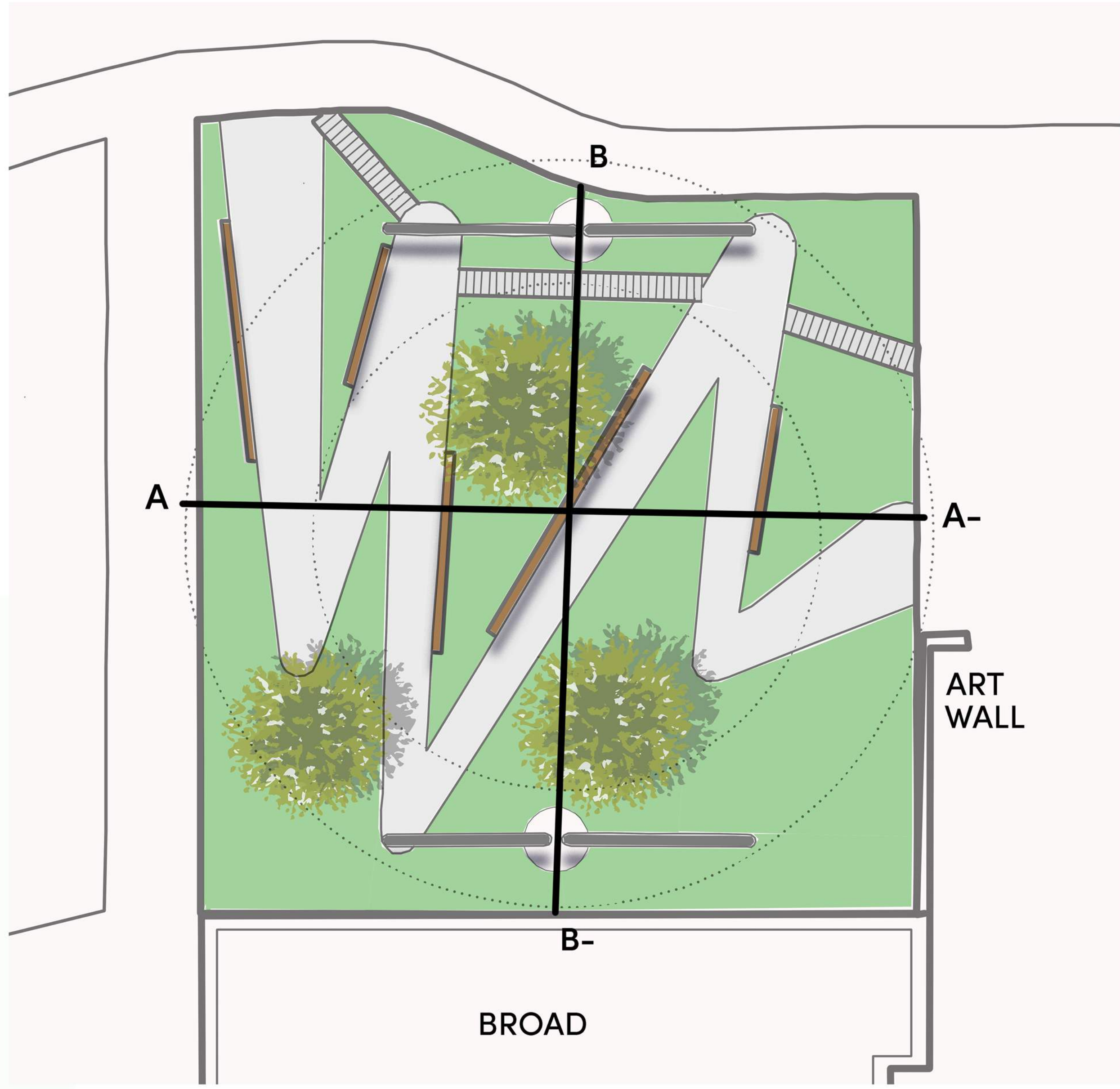
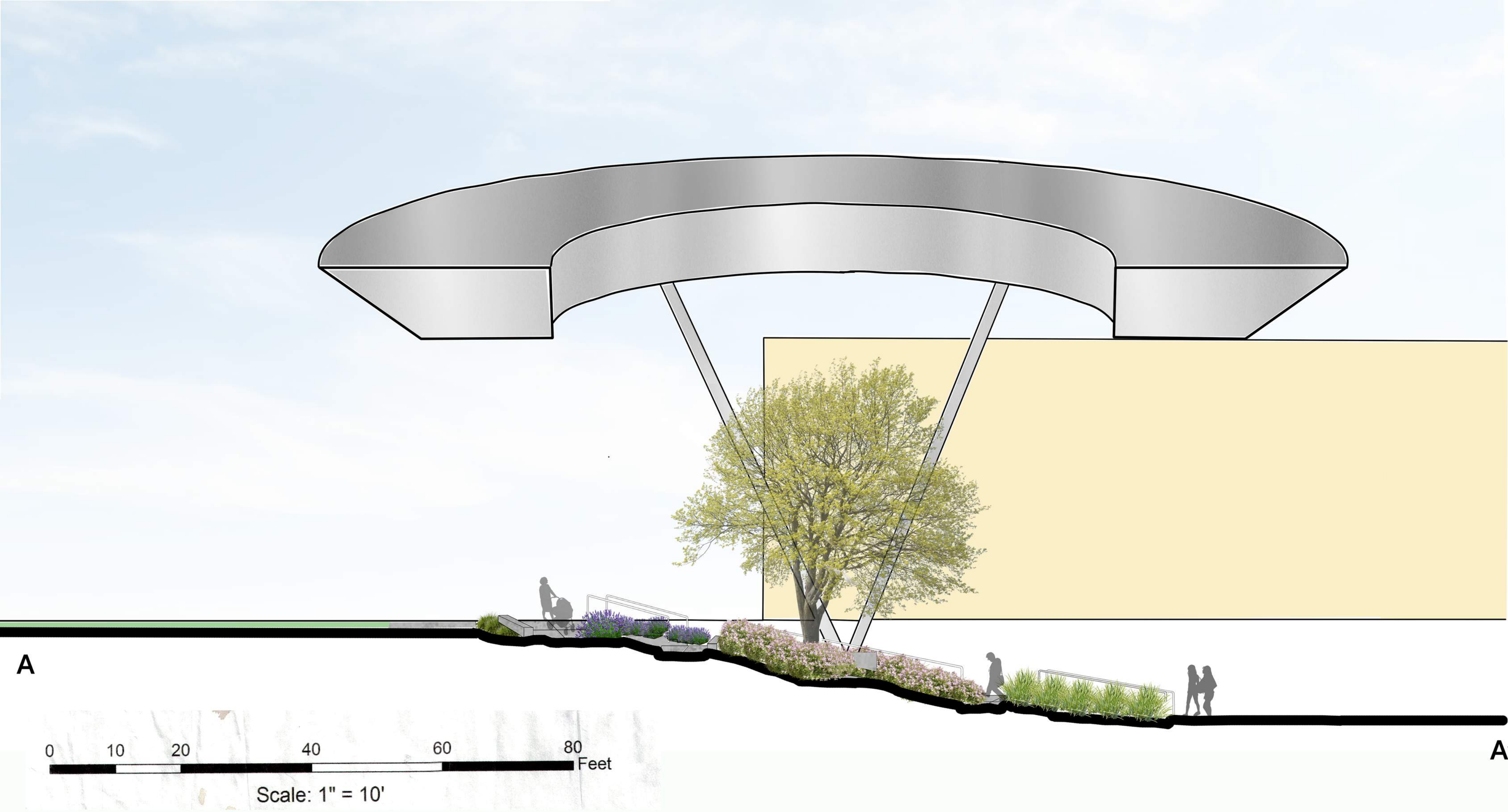
TRACY WOLK LD 2 WINTER 2022
JIM SMITH, INSTRUCTOR



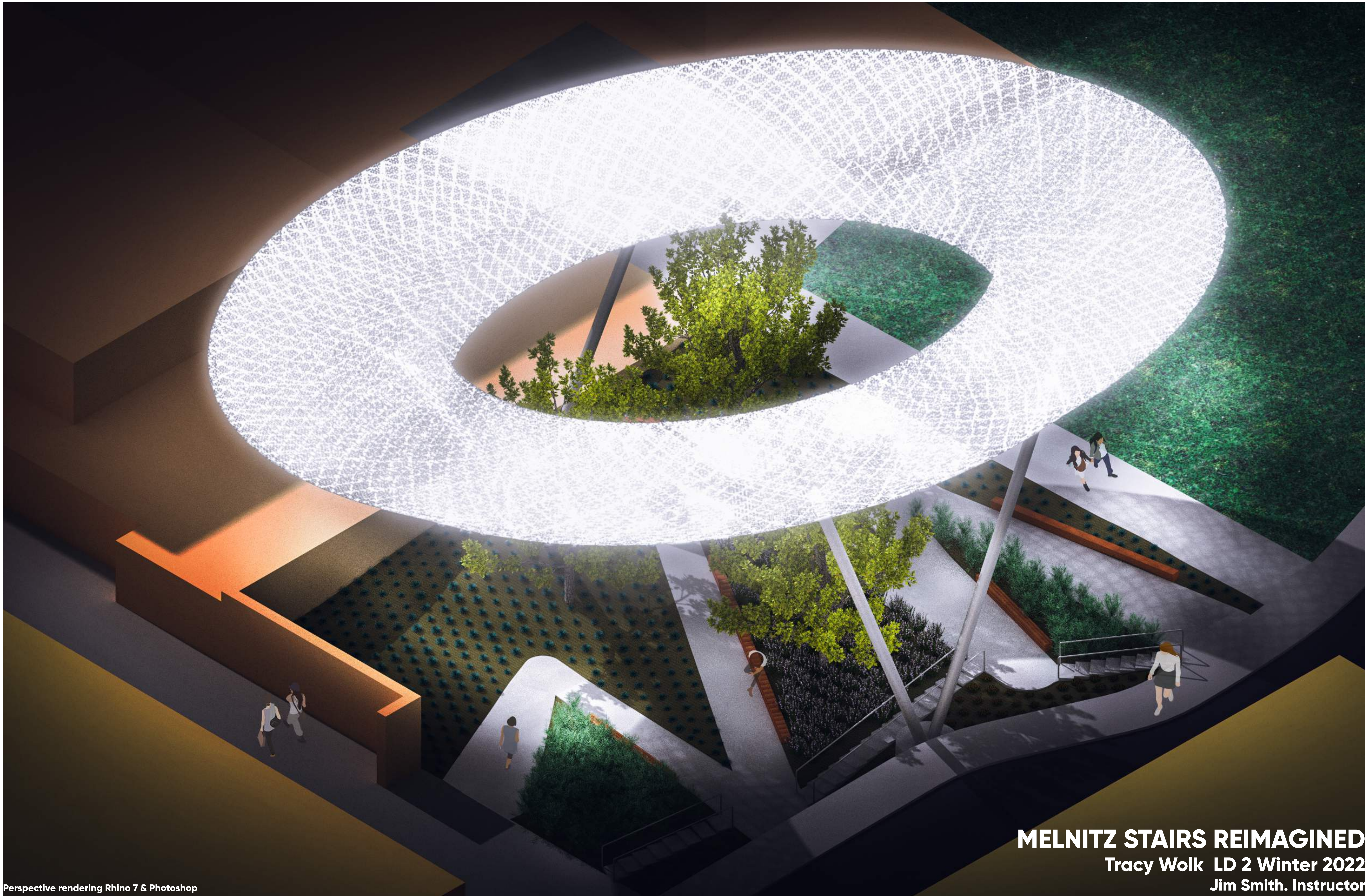
Scale: 1" = 10'



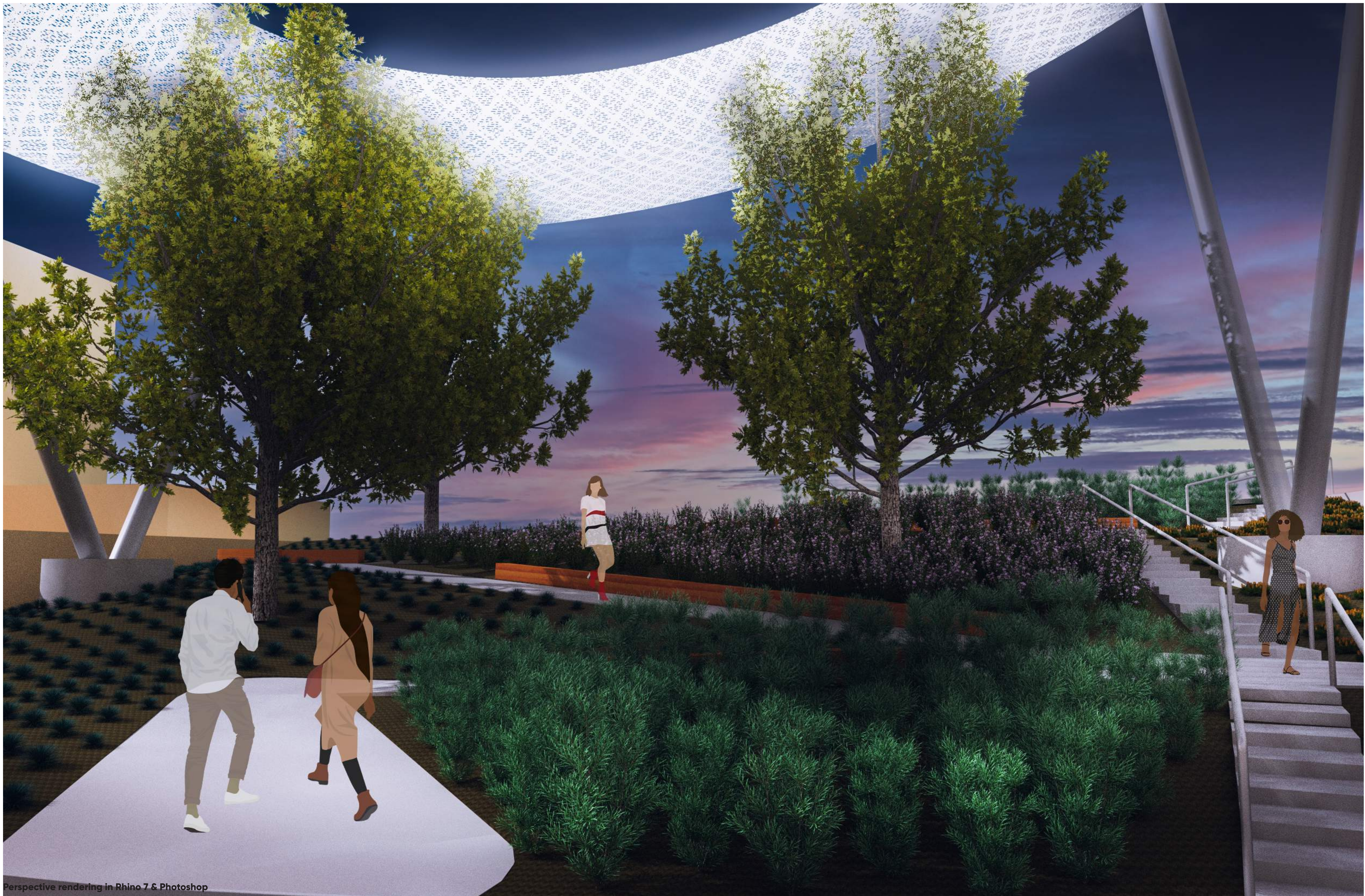
SECTIONS



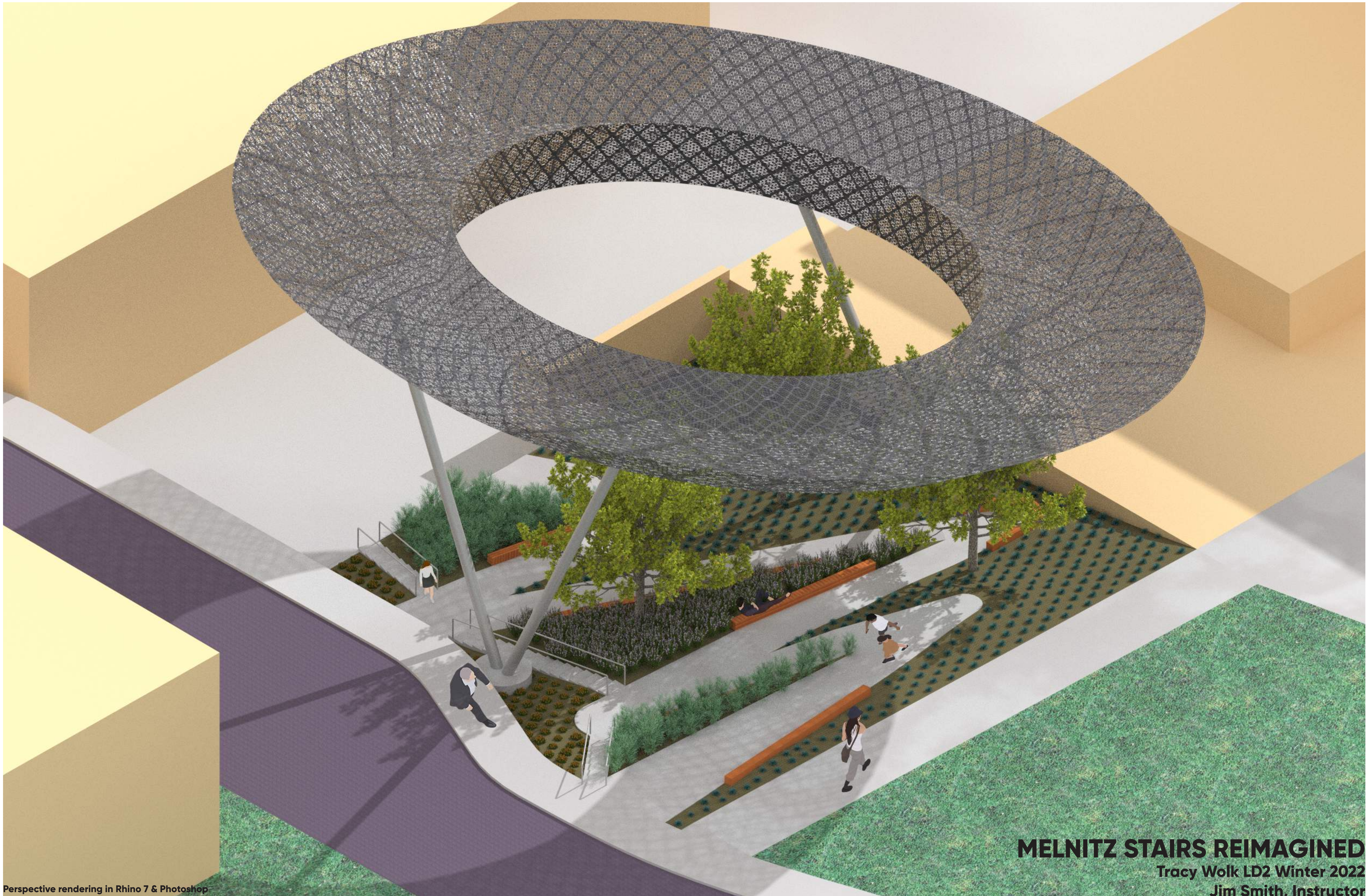
Melnitz Stairs Reimagined
Tracy Wolk LD 2 Winter 2022
Jim Smith, Instructor



MELNITZ STAIRS REIMAGINED
Tracy Wolk LD 2 Winter 2022
Jim Smith. Instructor



Perspective rendering in Rhino 7 & Photoshop



MELNITZ STAIRS REIMAGINED

Tracy Wolk LD2 Winter 2022

Jim Smith, Instructor



Perspective render in Rhino 7 & Photoshop

MELNITZ STAIRS REIMAGINED
Tracy Wolk LD2 Winter 2022
Jim Smith, Instructor

