

Finding Beauty in Brokenness

A Redesign of Melnitz Stairs

Grace Pan
Professor Smith
Landscape Design II

Site Location

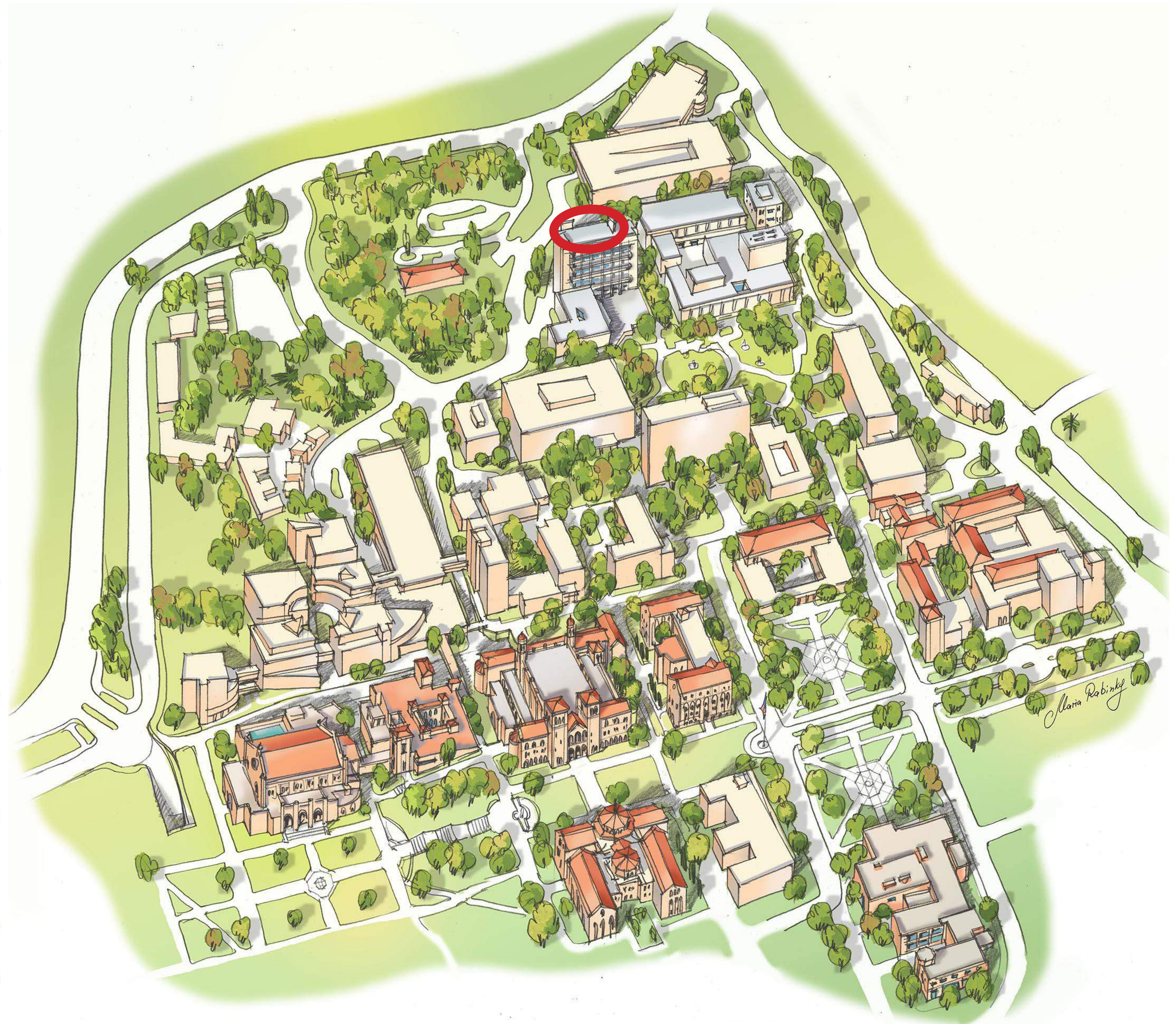
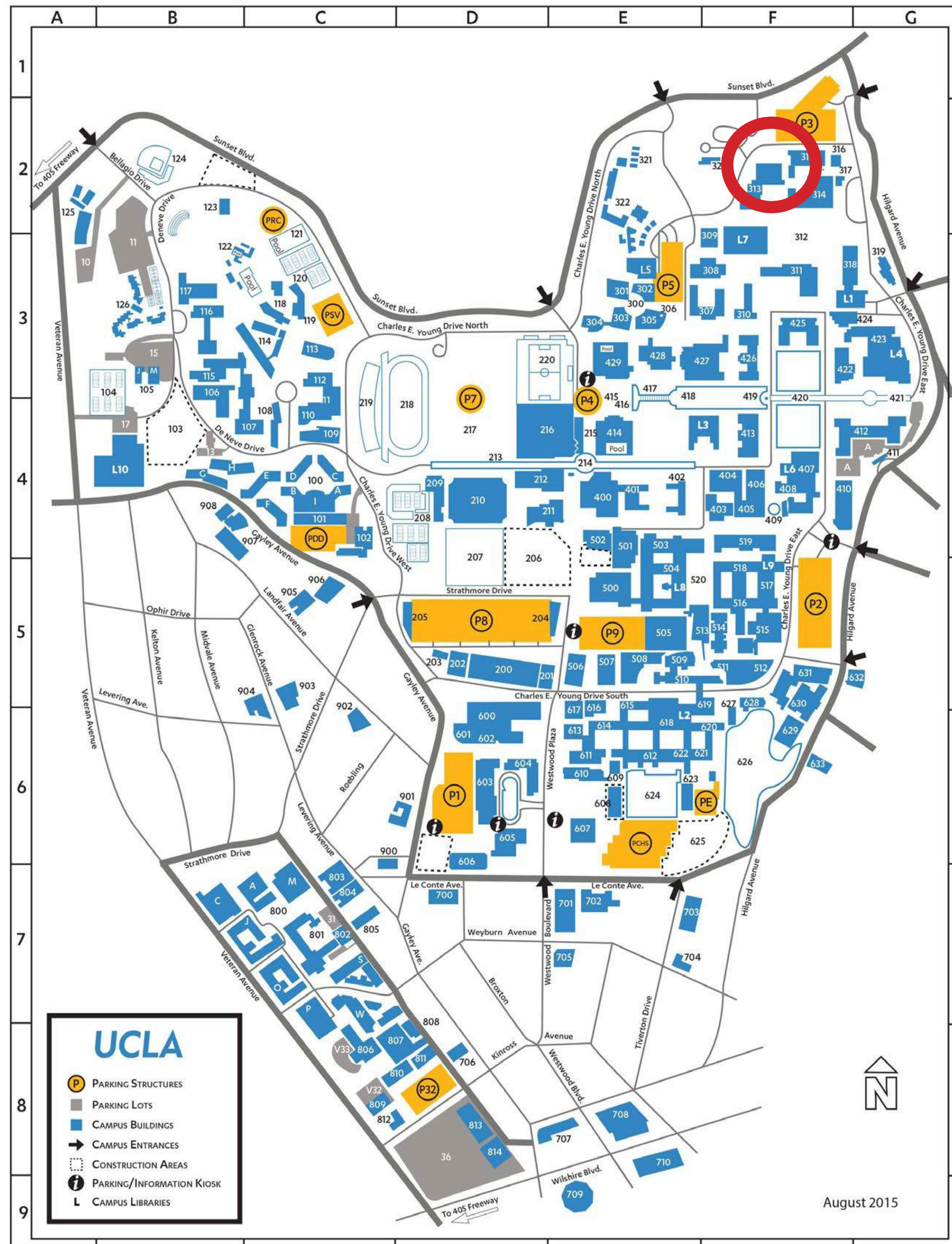
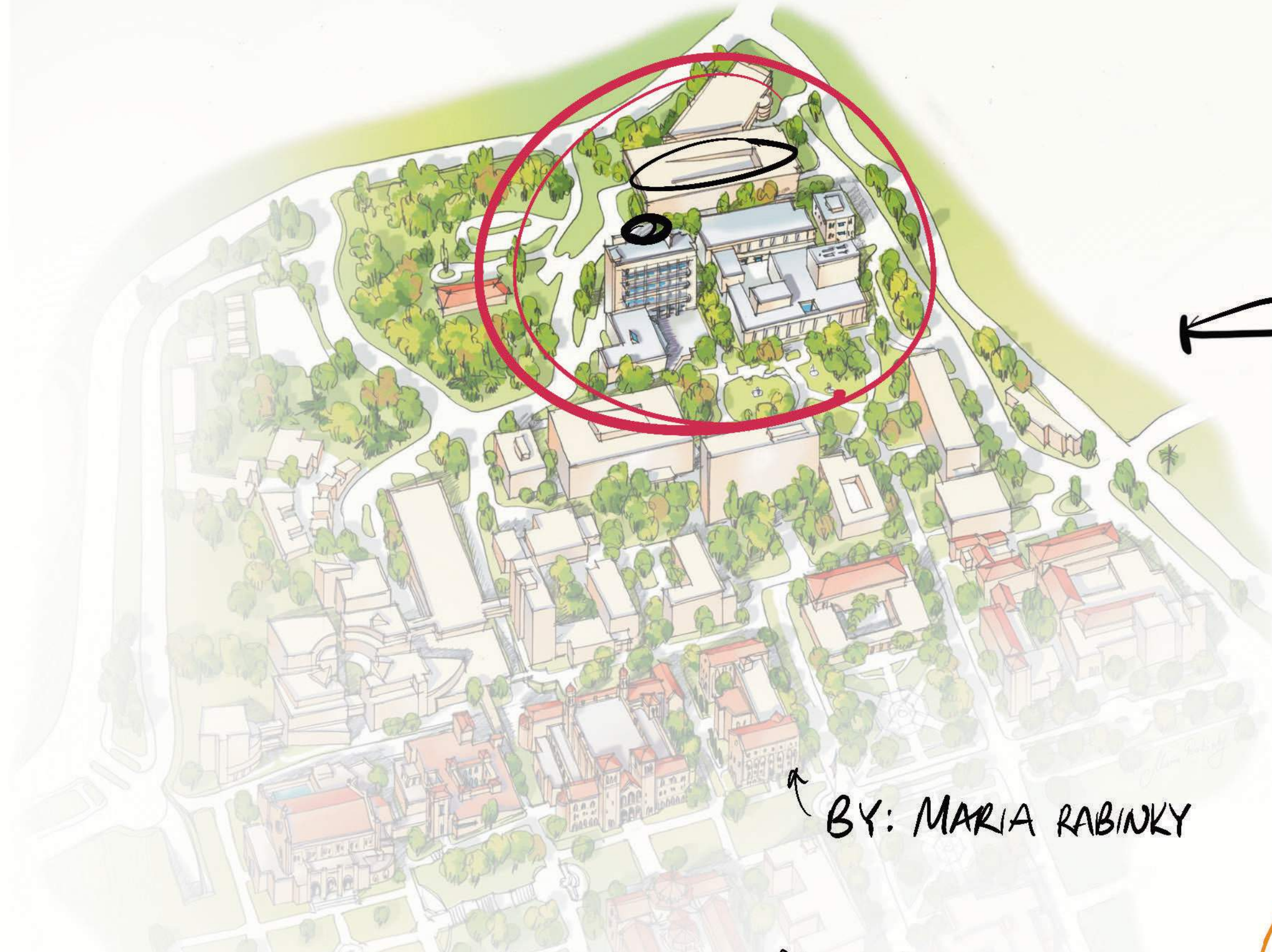
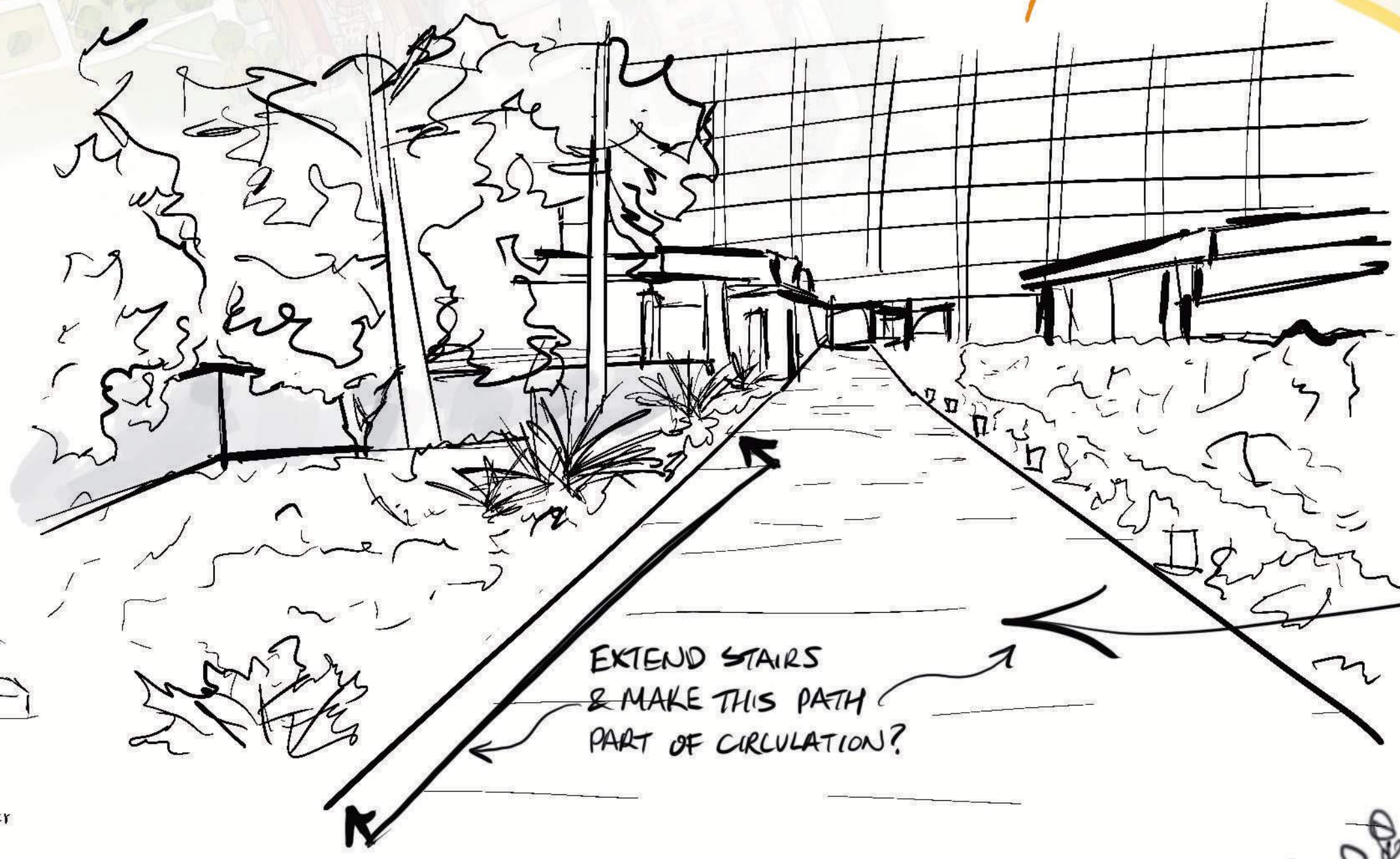
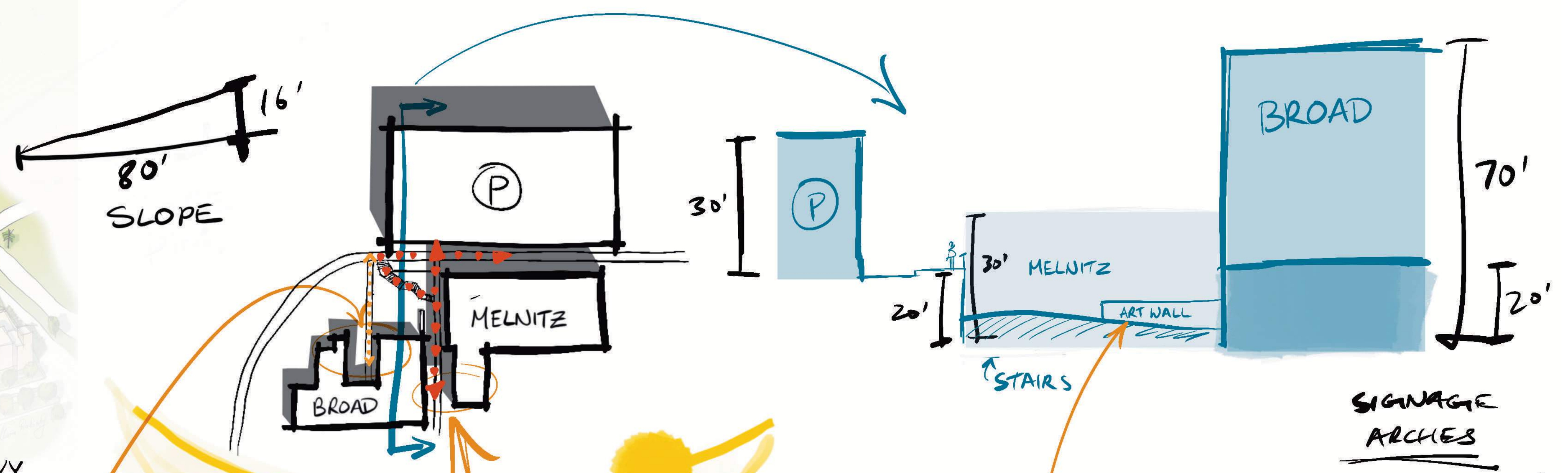


Illustration by Maria Rabinky

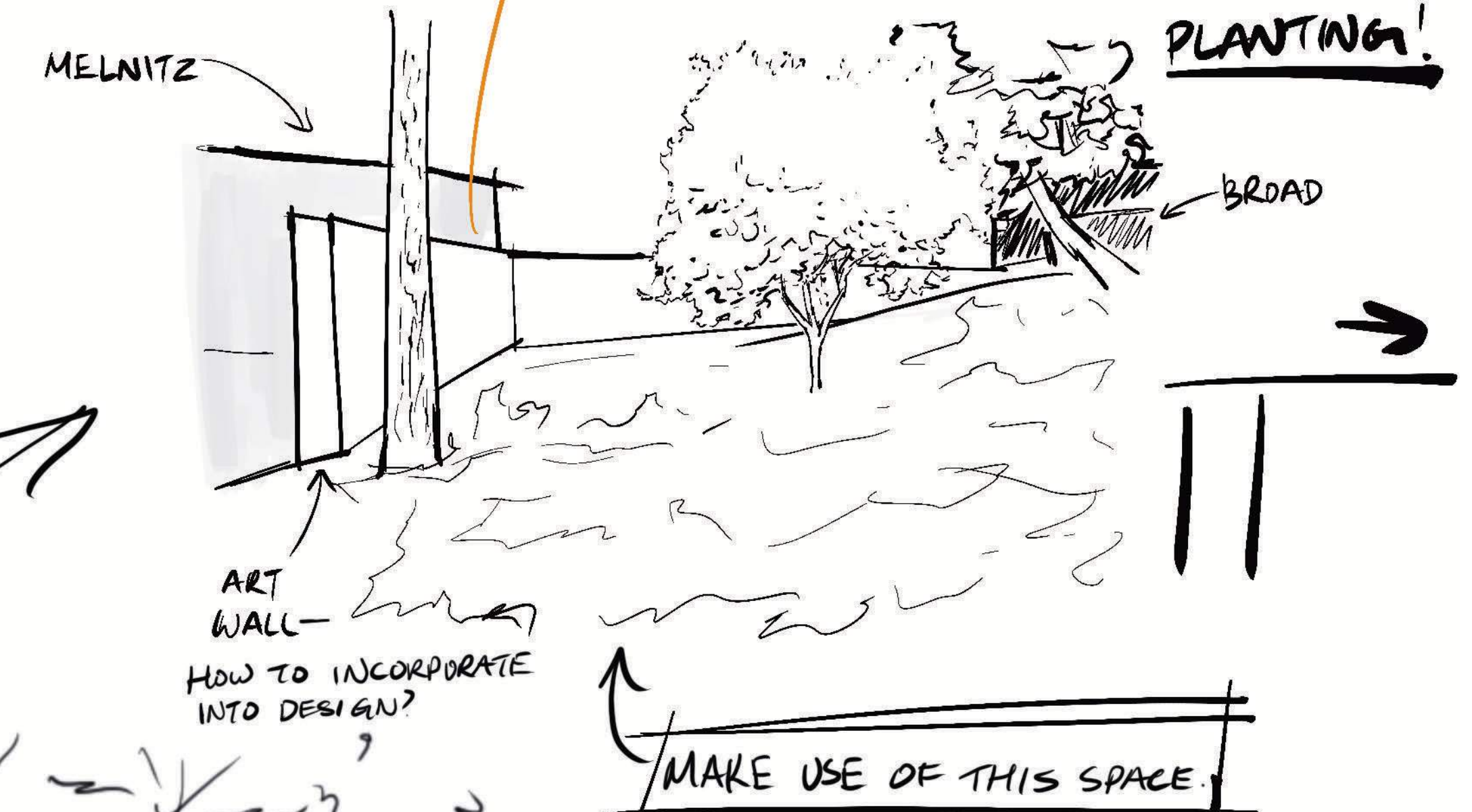
Site Analysis



BY: MARIA RABINKY

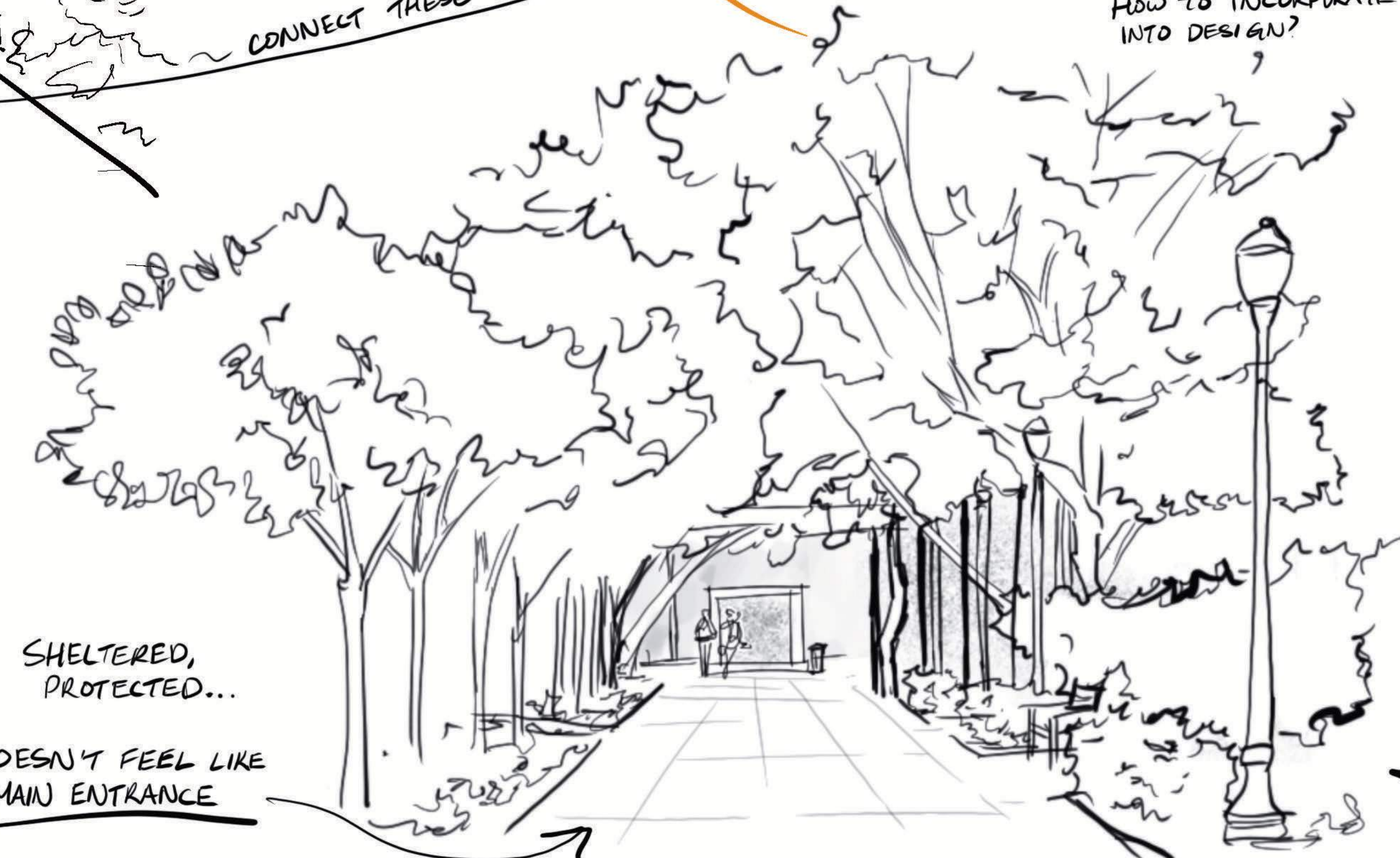
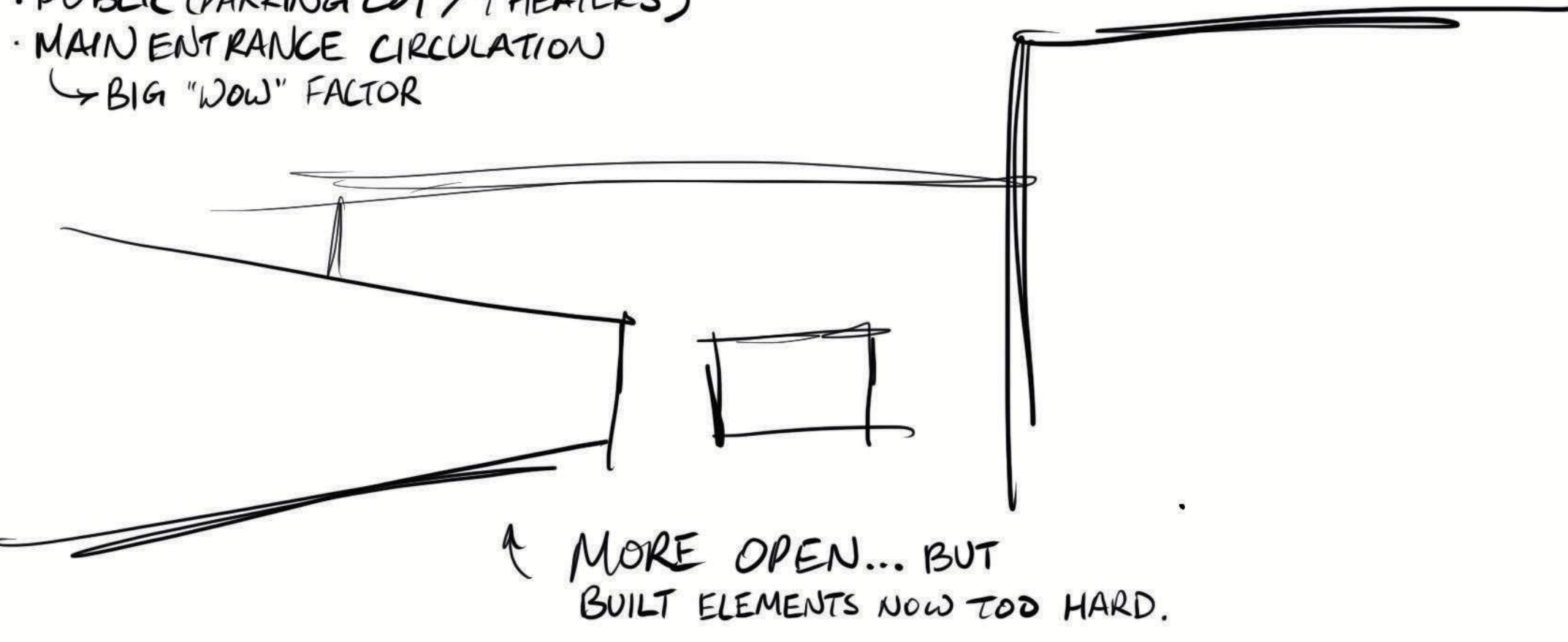


CONNECT THESE SPACES ~



- RHYTHM
- OPENNESS
- GRANDEUR
- PURPOSE
- GUIDANCE
- INTRIGUE

- USES:
- PUBLIC (PARKING LOT / THEATERS)
 - MAIN ENTRANCE CIRCULATION
 - ↳ BIG "WOW" FACTOR



WHAT DO PEOPLE USE ENTRANCES FOR?
WHAT DO I WANT PEOPLE TO USE THIS SPACE FOR?
HOW DO I WANT THEM TO EXPERIENCE THIS?

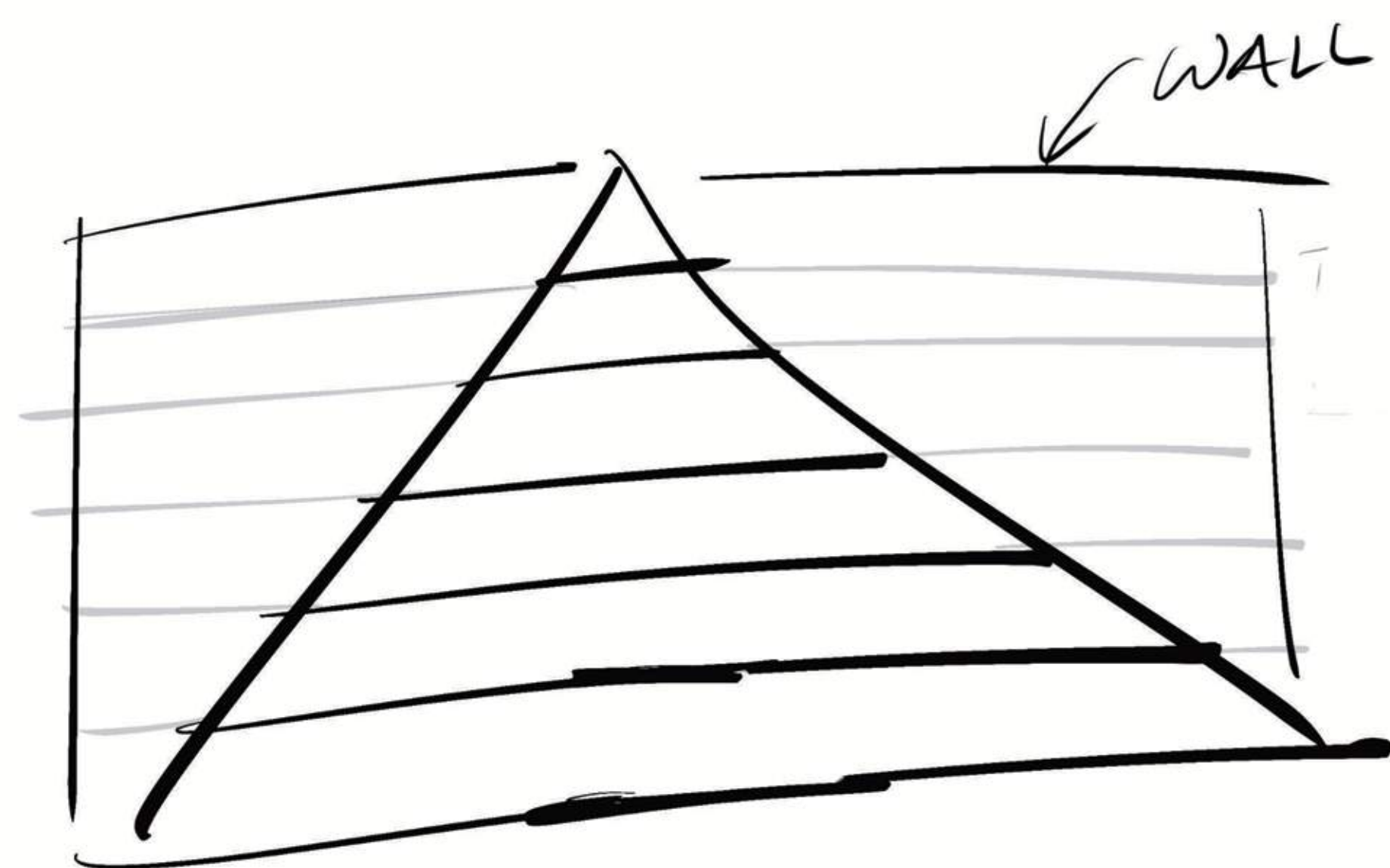
- SEQUENTIAL
- ↳ INTIMATE
- ↳ EXPLORATIVE
- LINEAR
- ↳ DIRECT
- ↳ OPEN VIEW

WHAT DO PEOPLE WANT IN AN ENTRANCE?

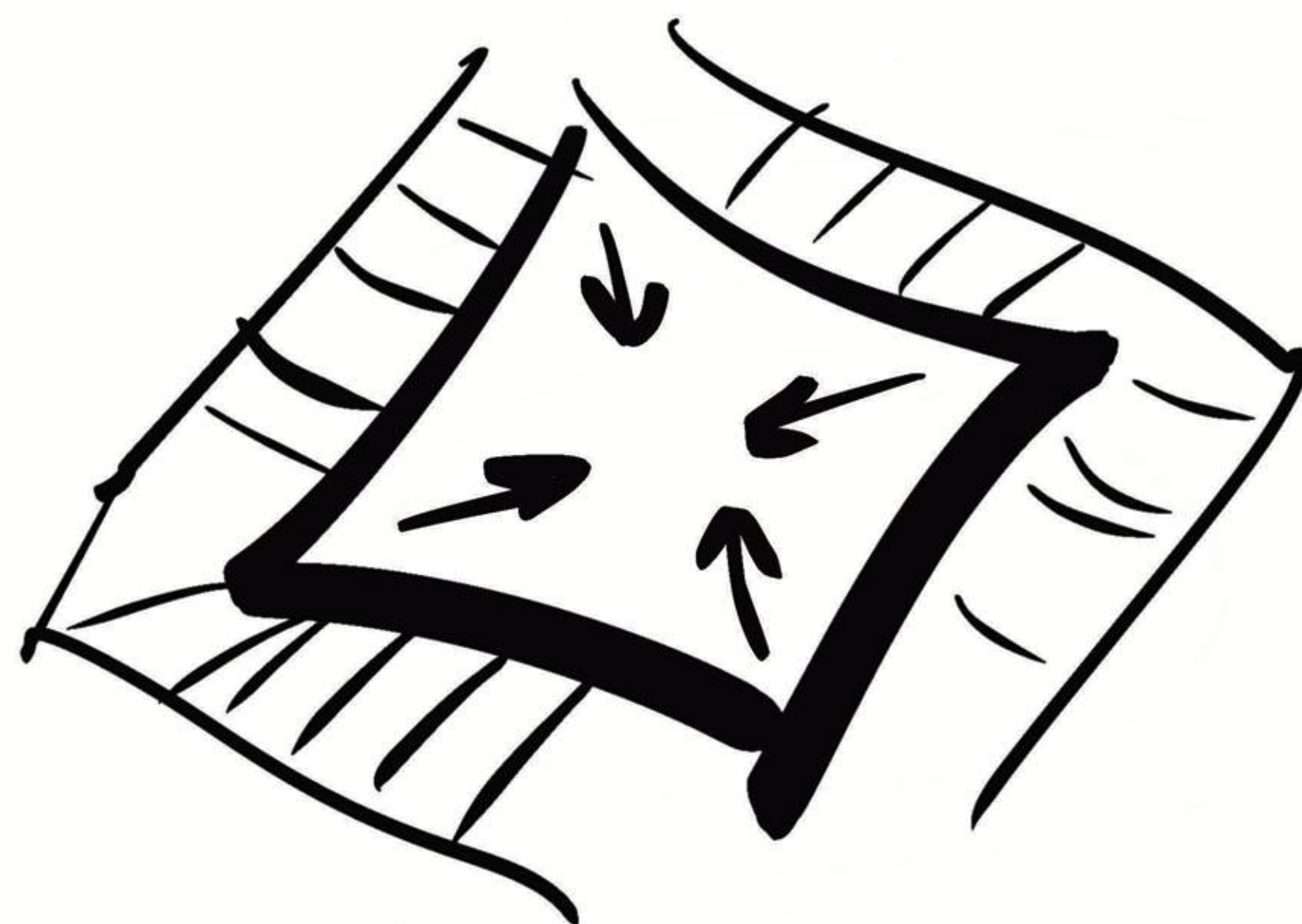
* SPACE TO BE A THRESHOLD B/TWN OUTSIDE WORLD & UCLA CAMPUS.

← PERHAPS FRAME STAIRS LIKE THIS PATH FOR CONTINUITY?

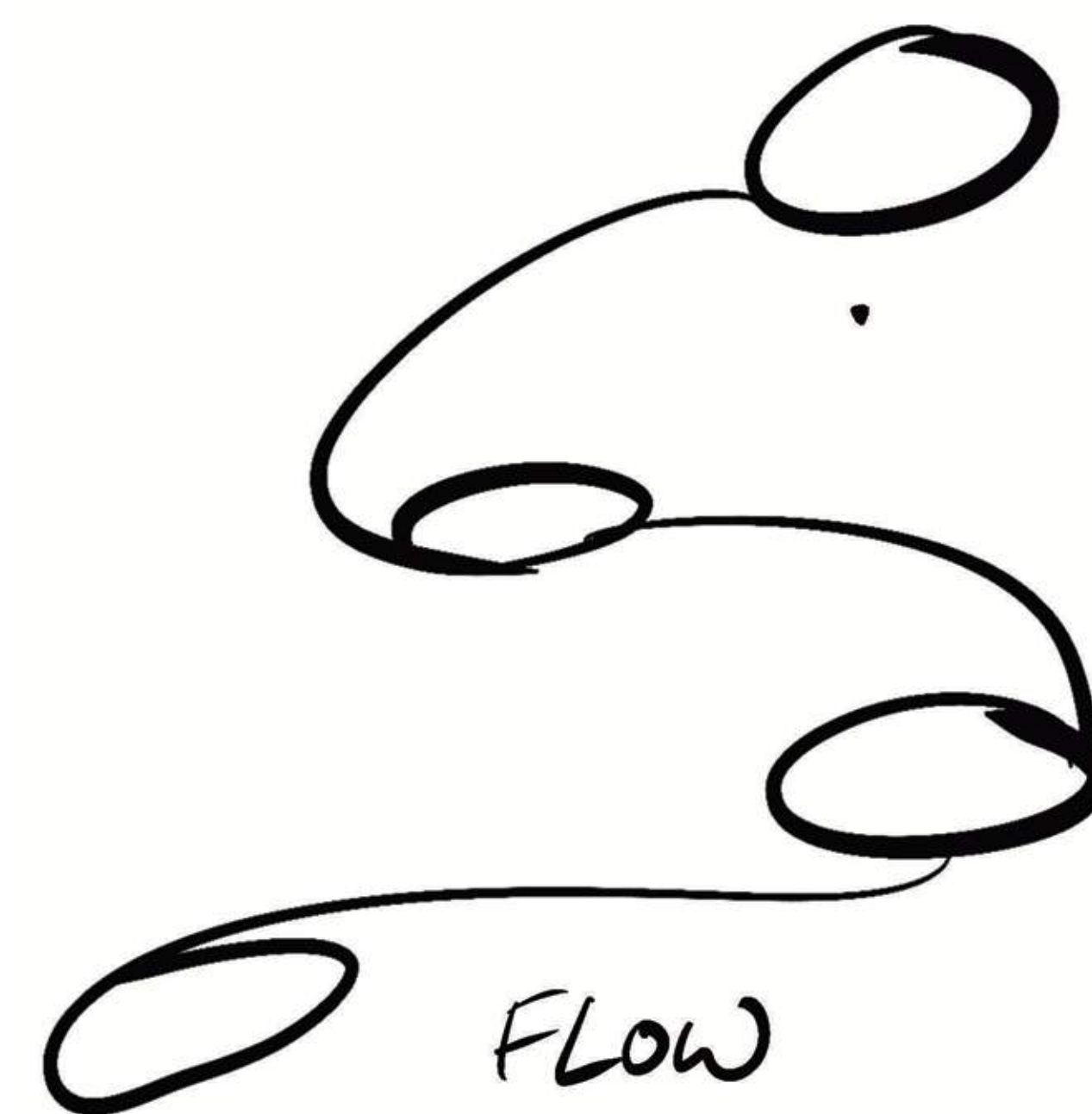
Concepts



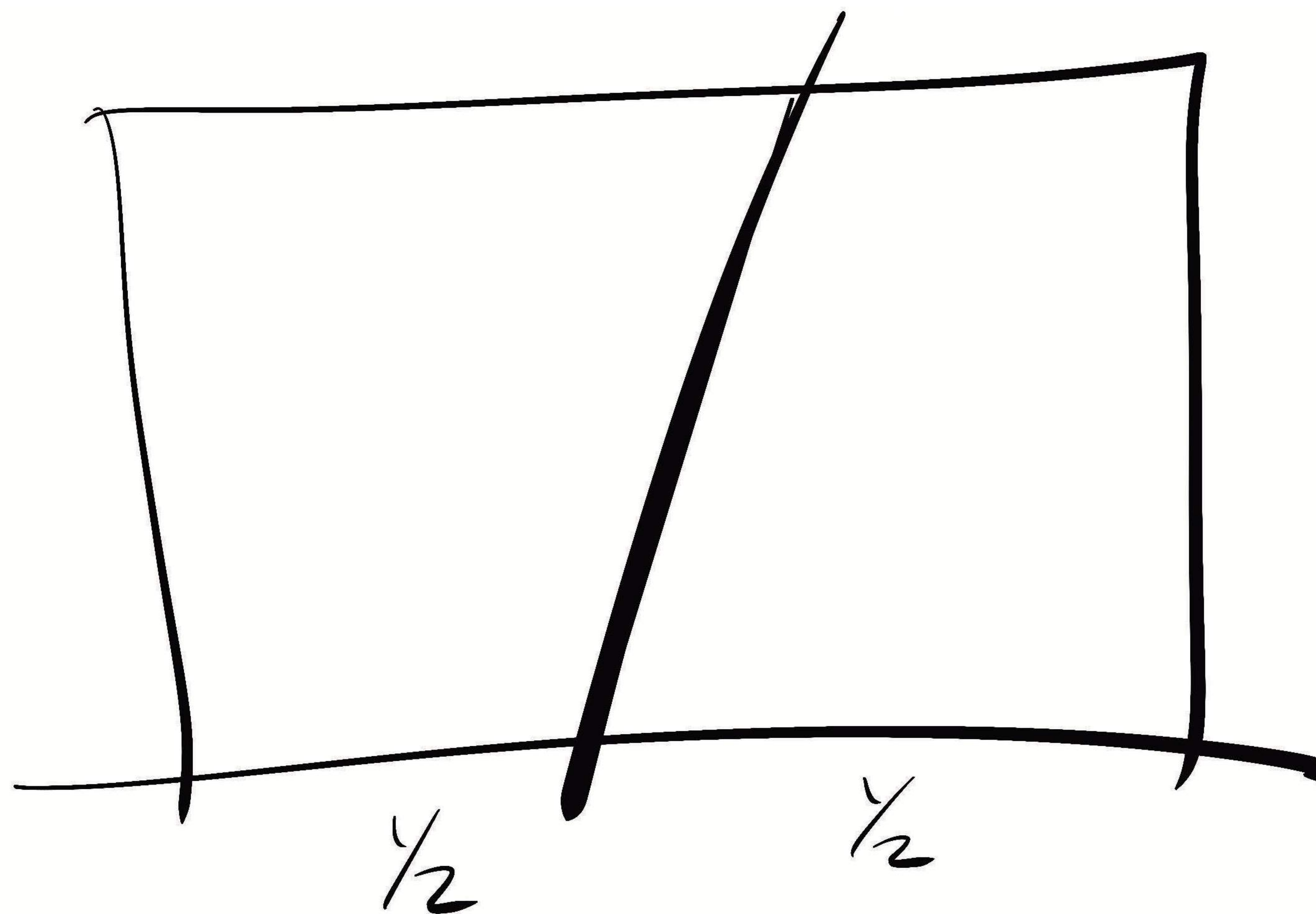
VISUAL FUNNEL

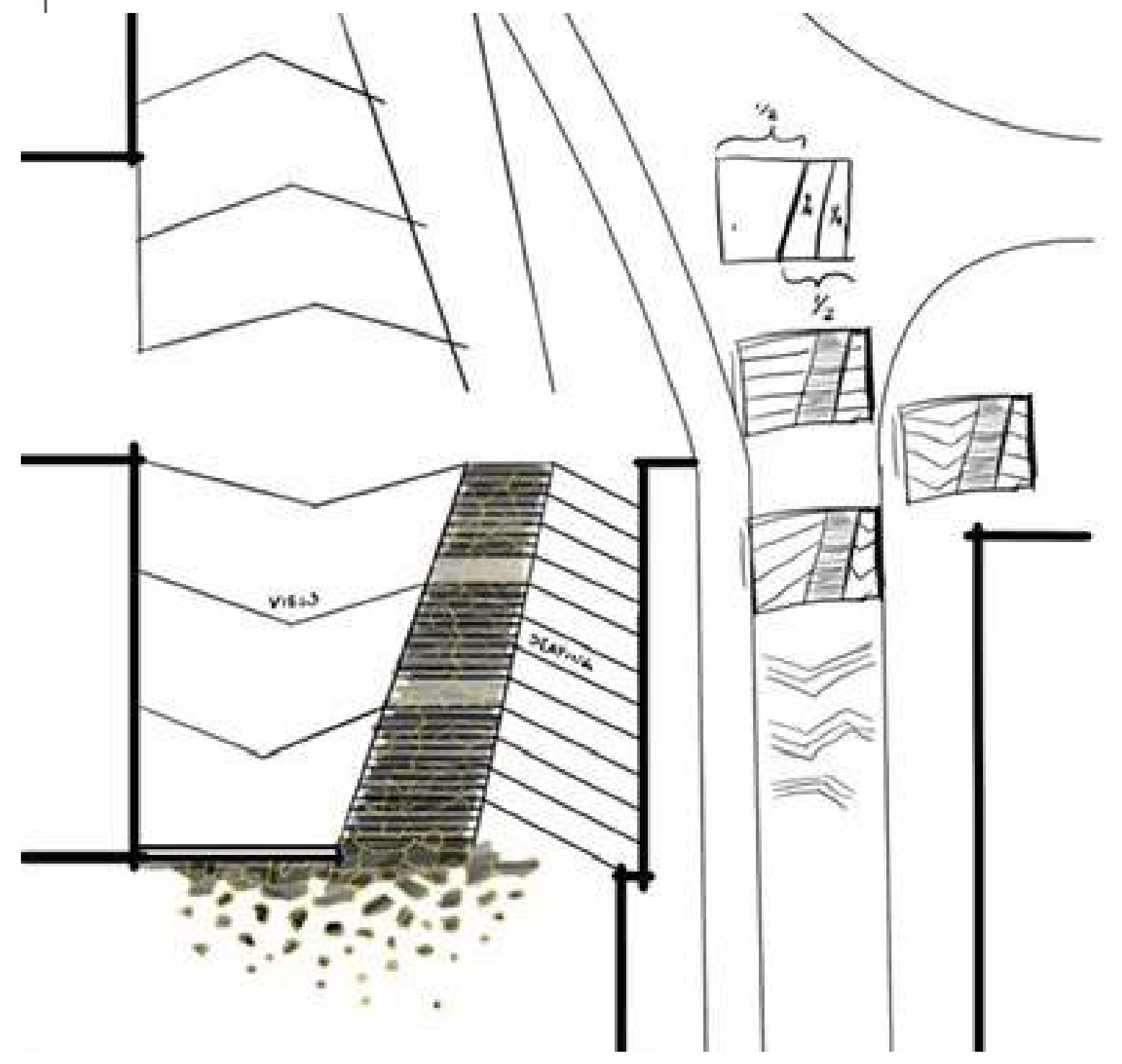
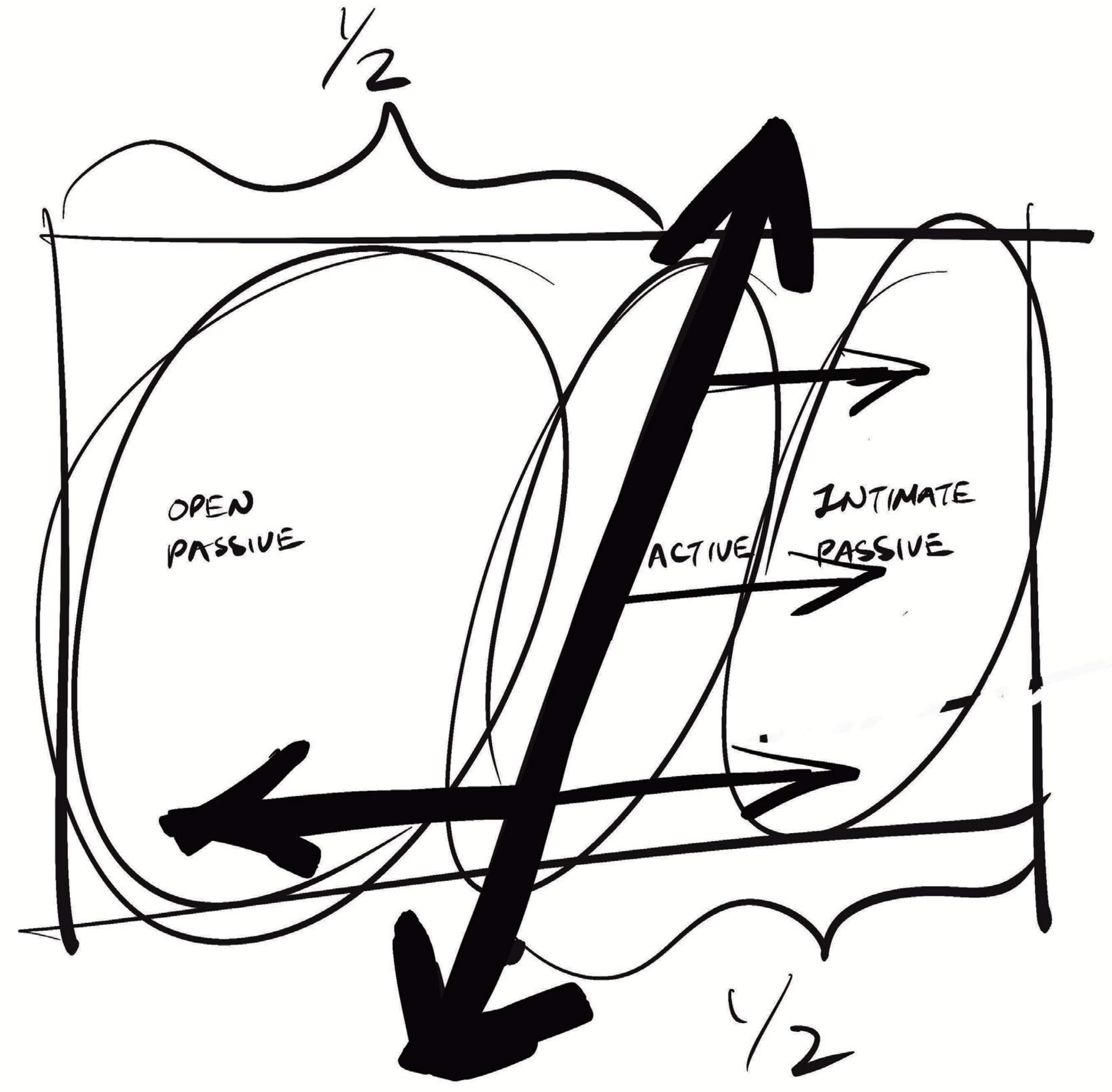
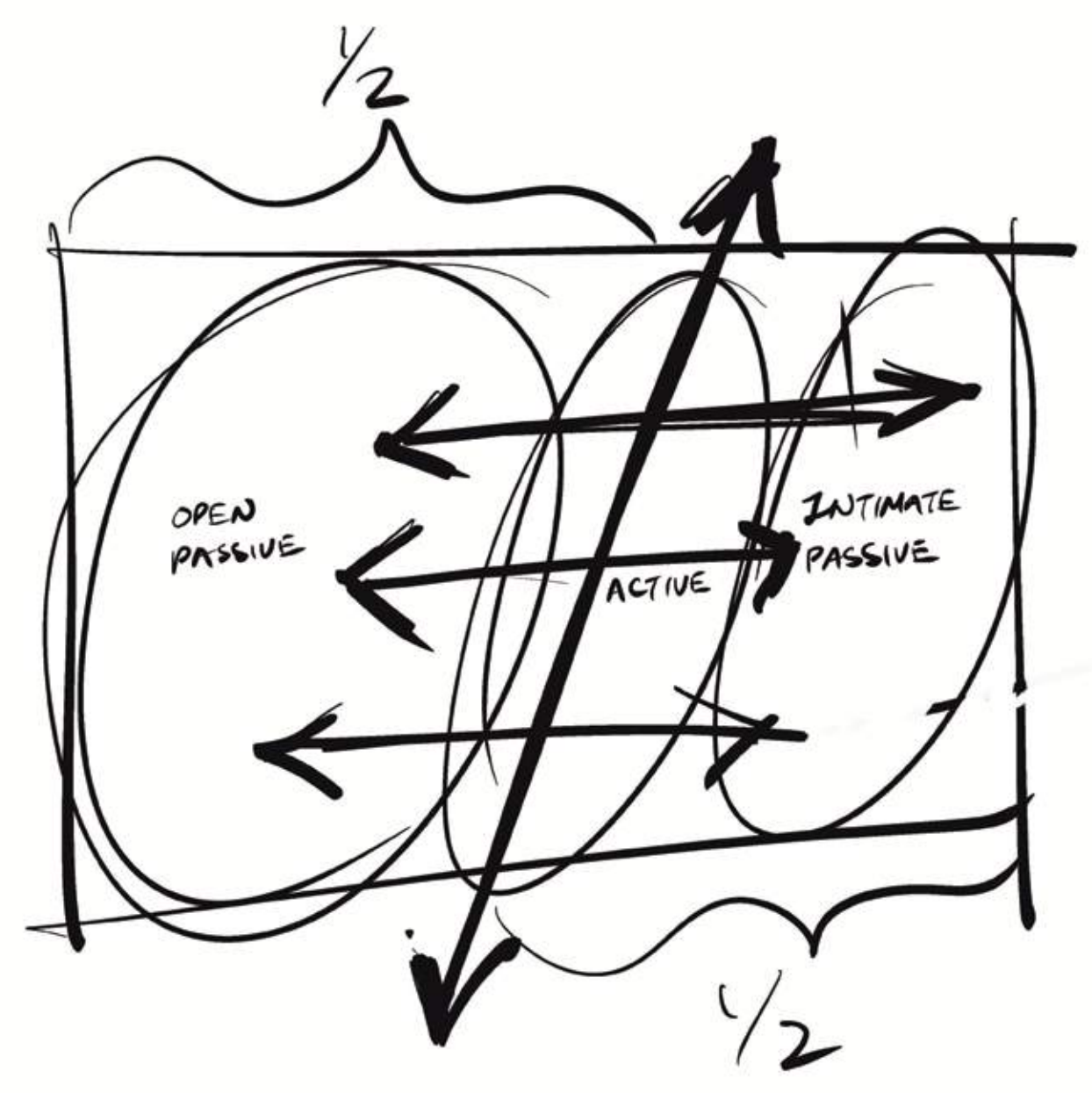
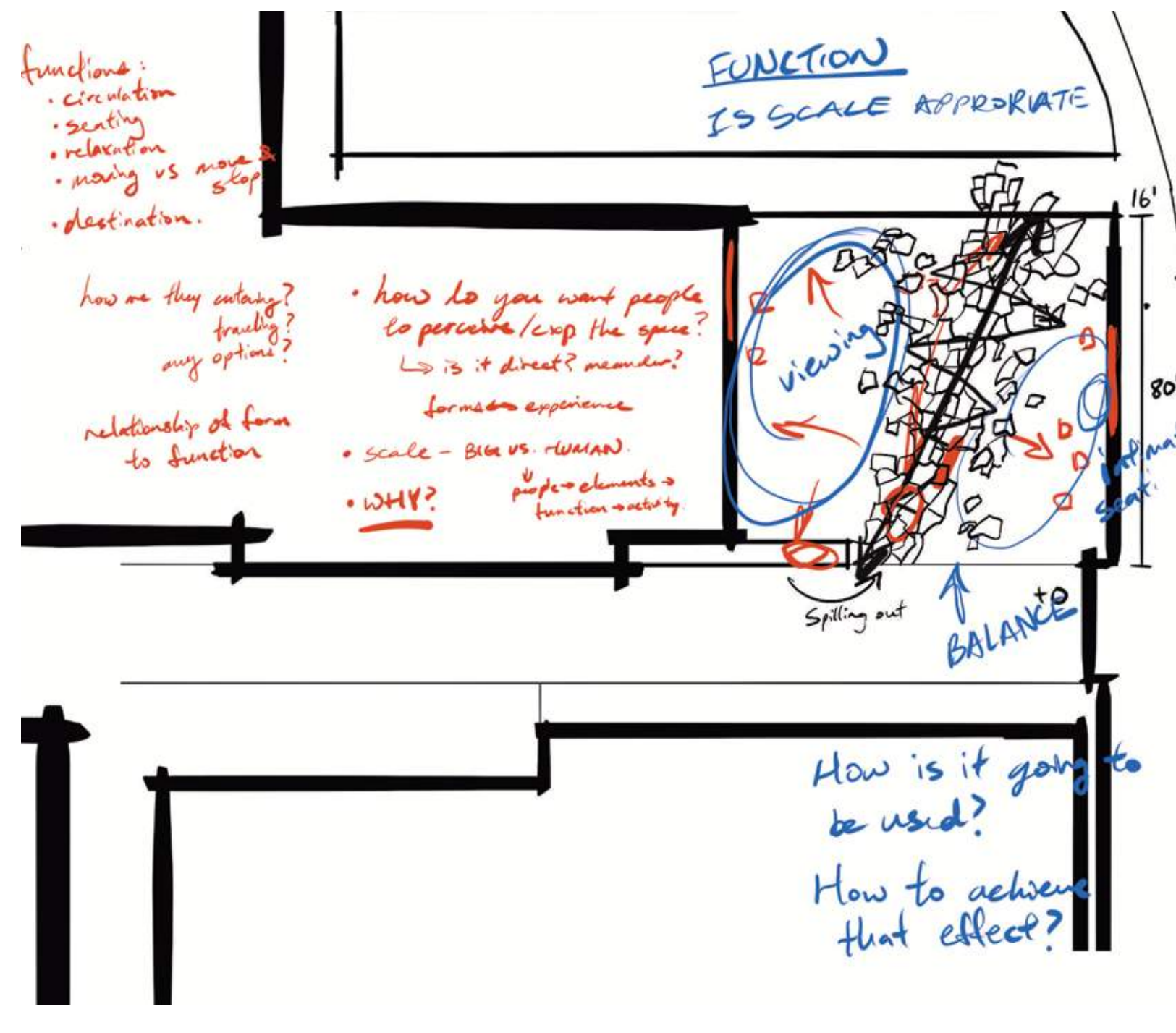
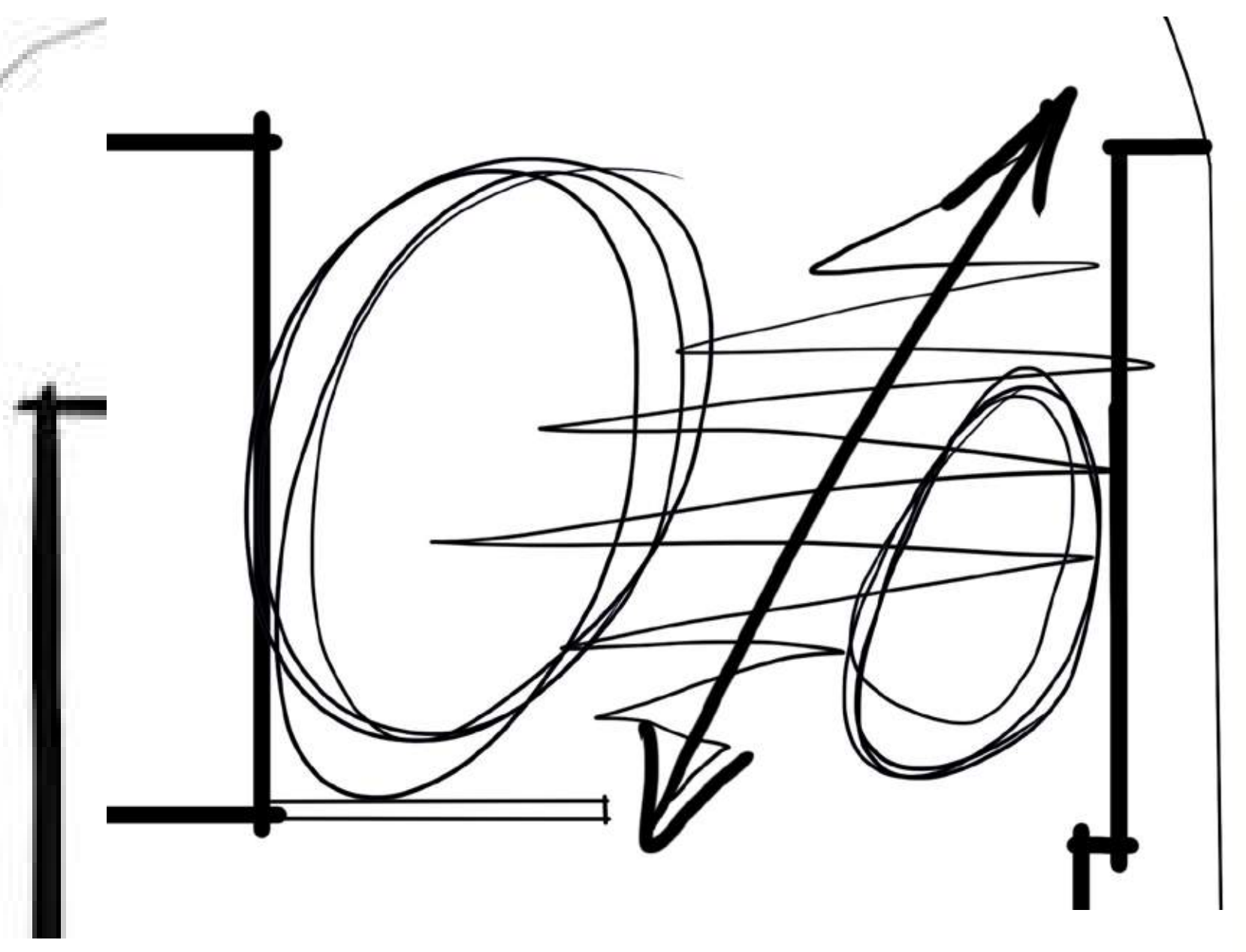
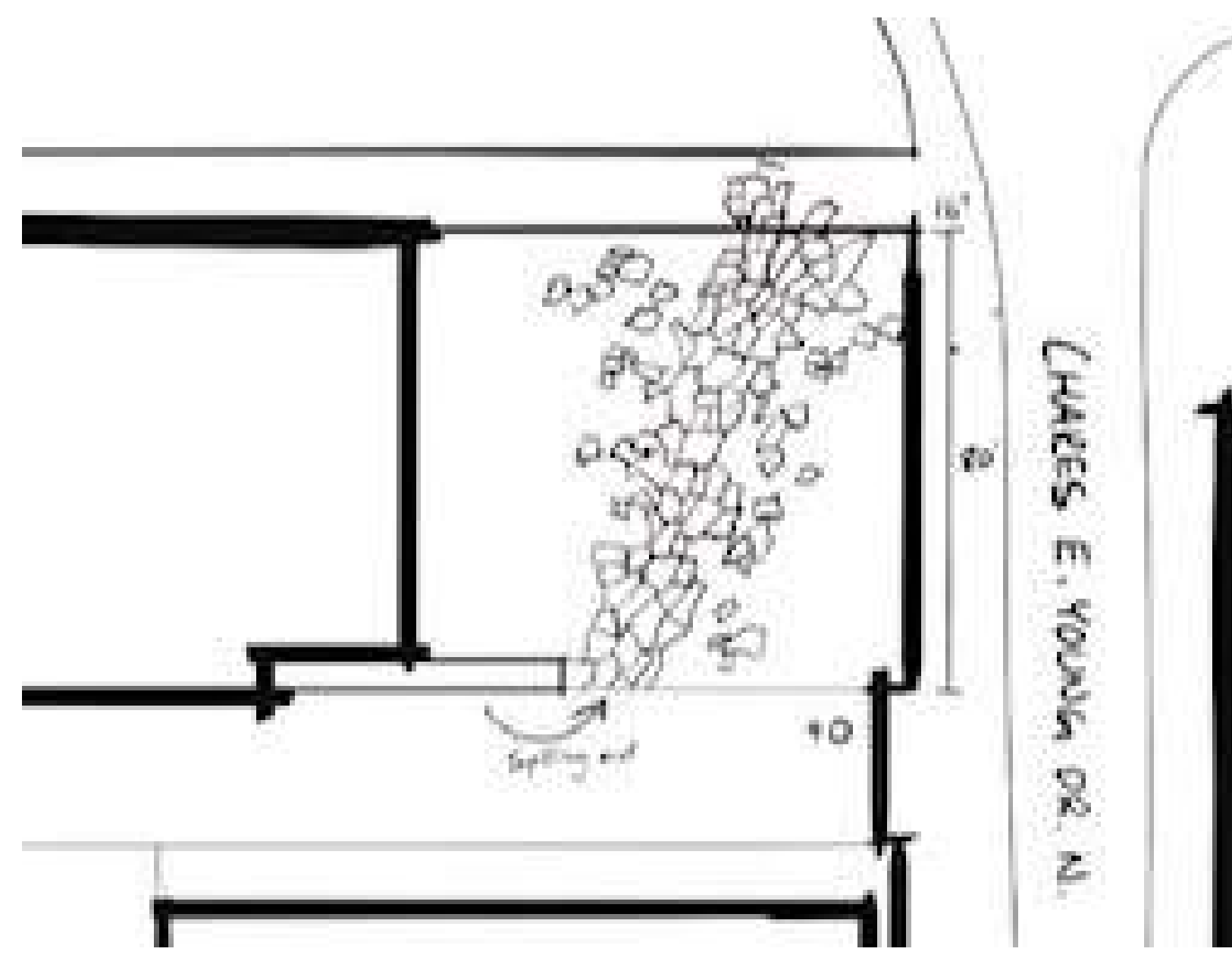


A DEEPER LOOK



FLOW





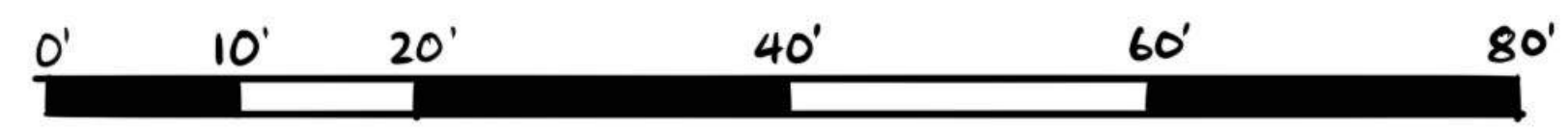
Site Plan

Parking Structure

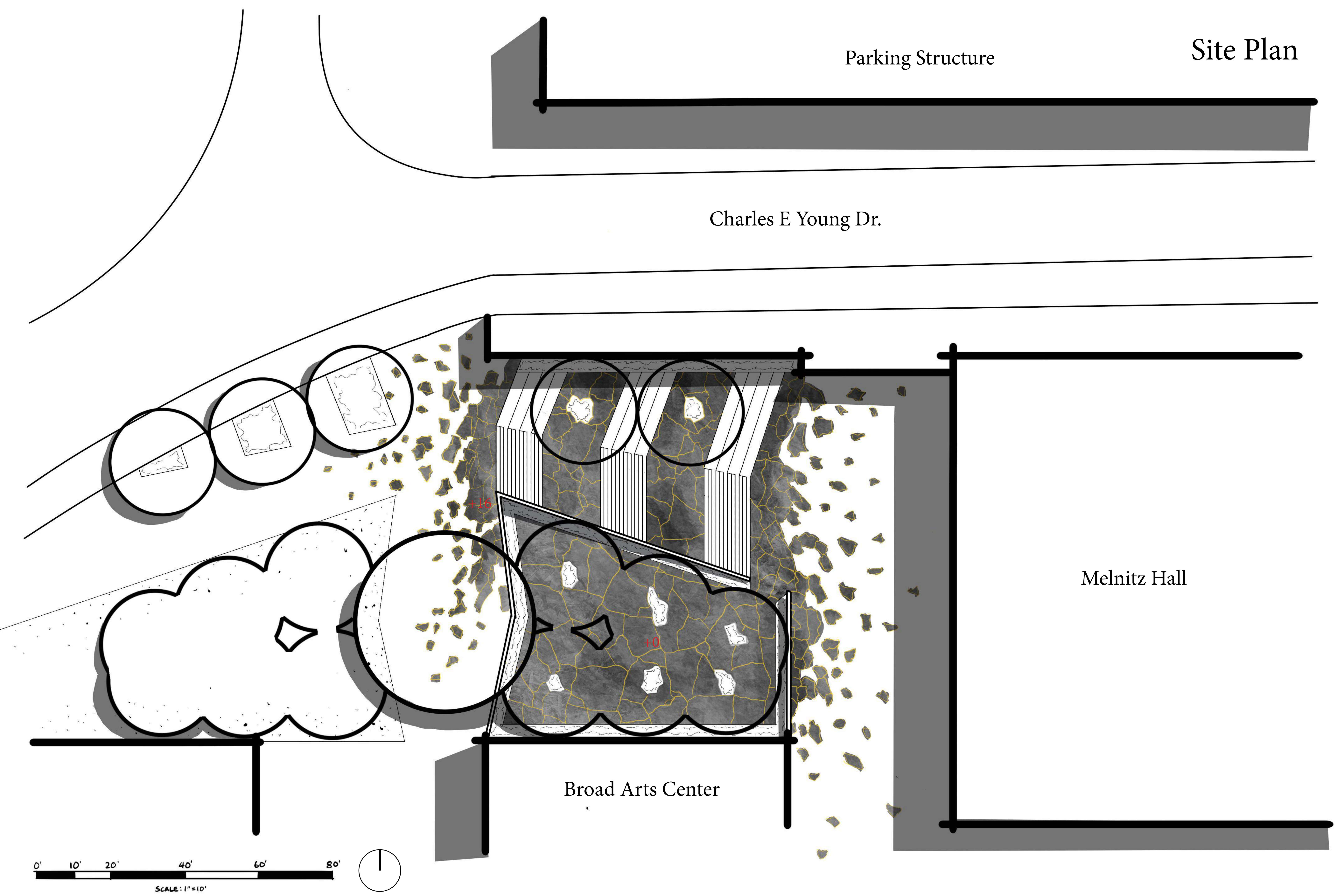
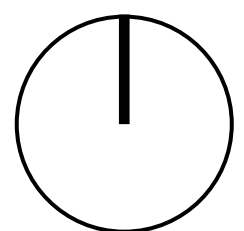
Charles E Young Dr.

Melnitz Hall

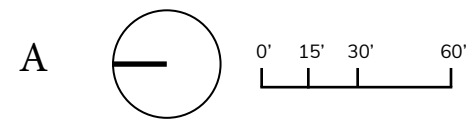
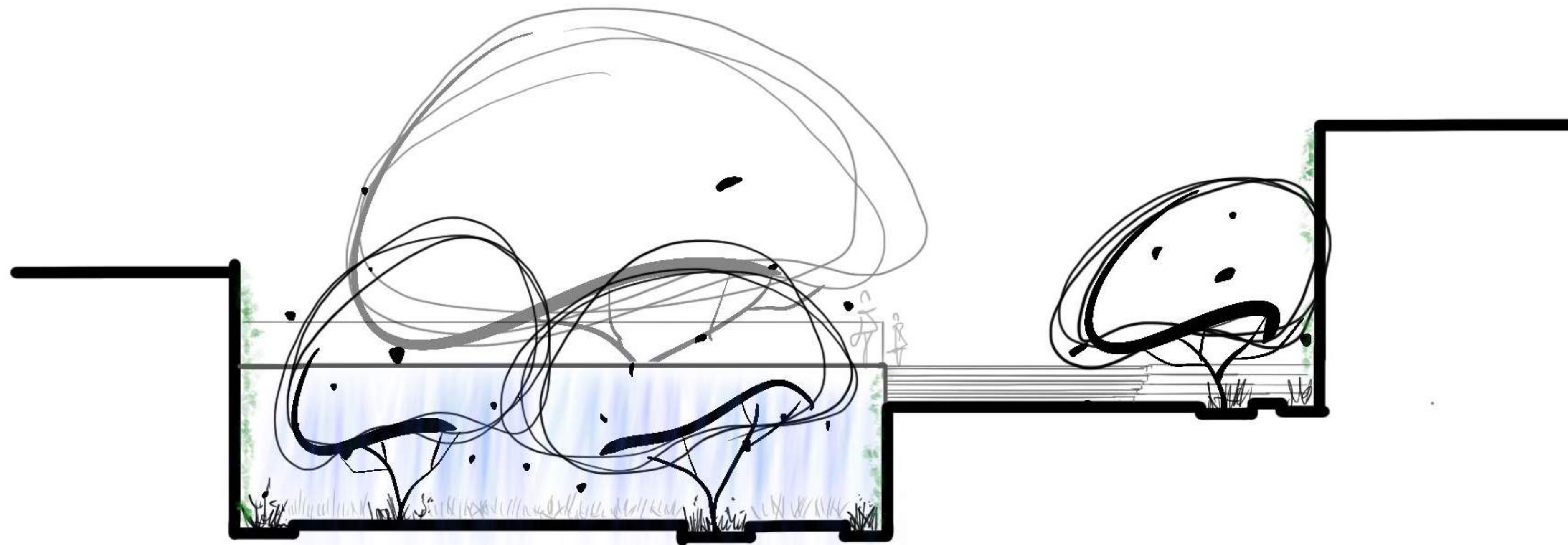
Broad Arts Center



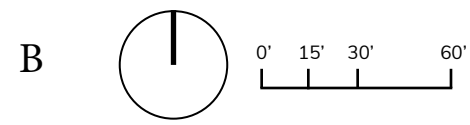
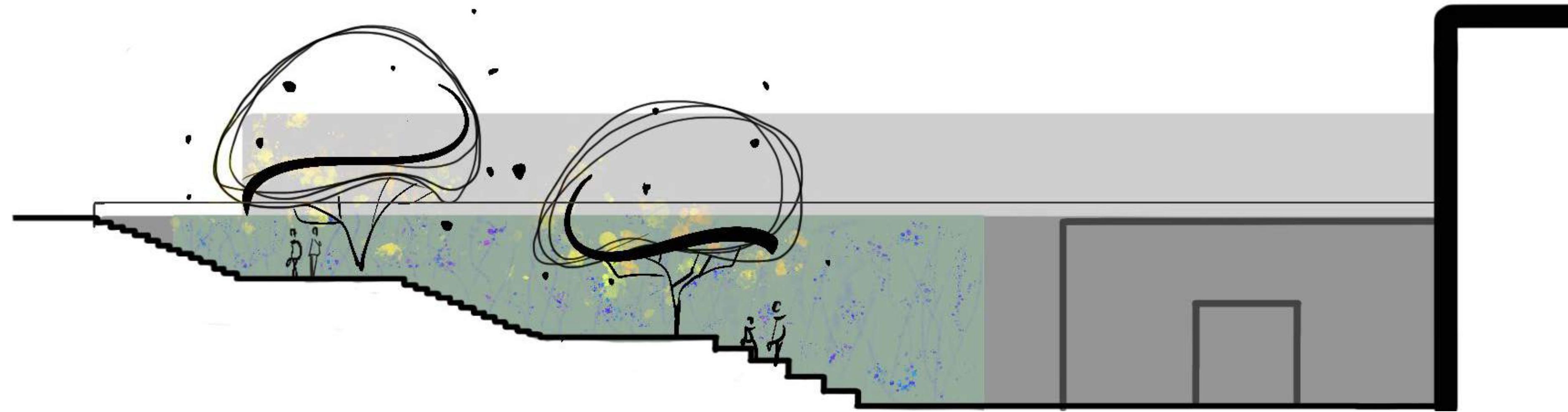
SCALE: 1"=10'



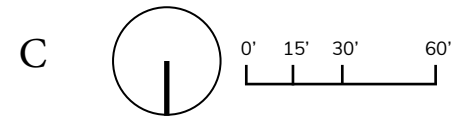
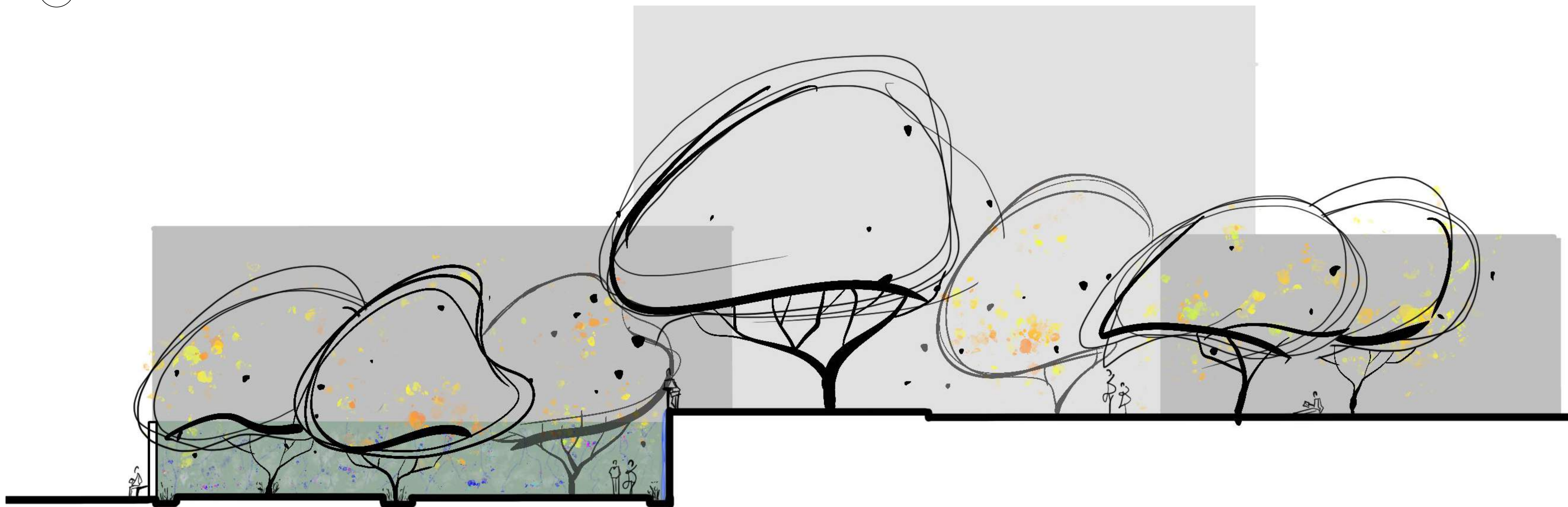
Sections



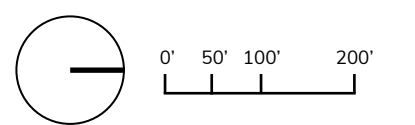
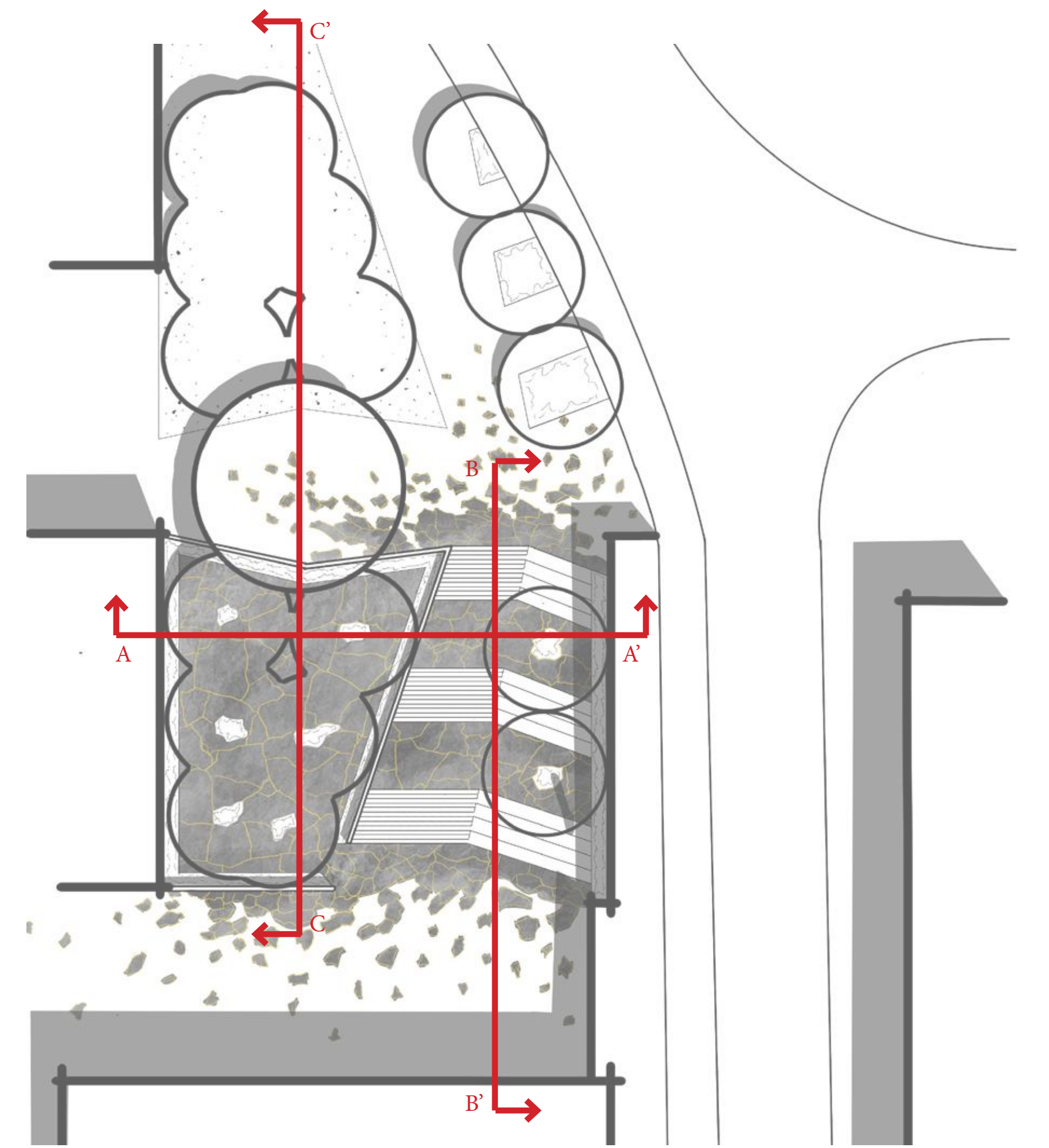
A'



B'



C'



Perspectives

