

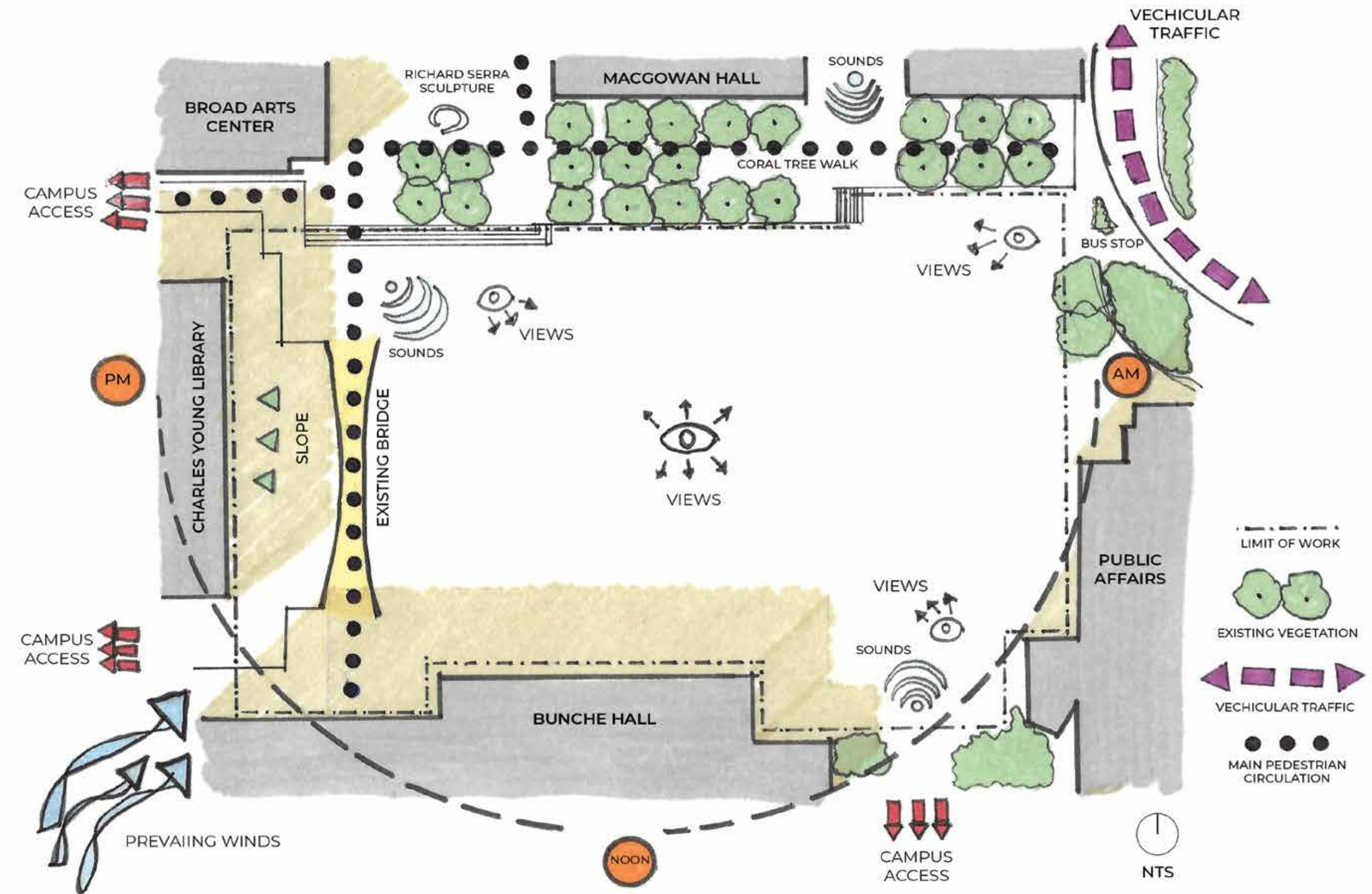


MURPHY SCULPTURE GARDEN

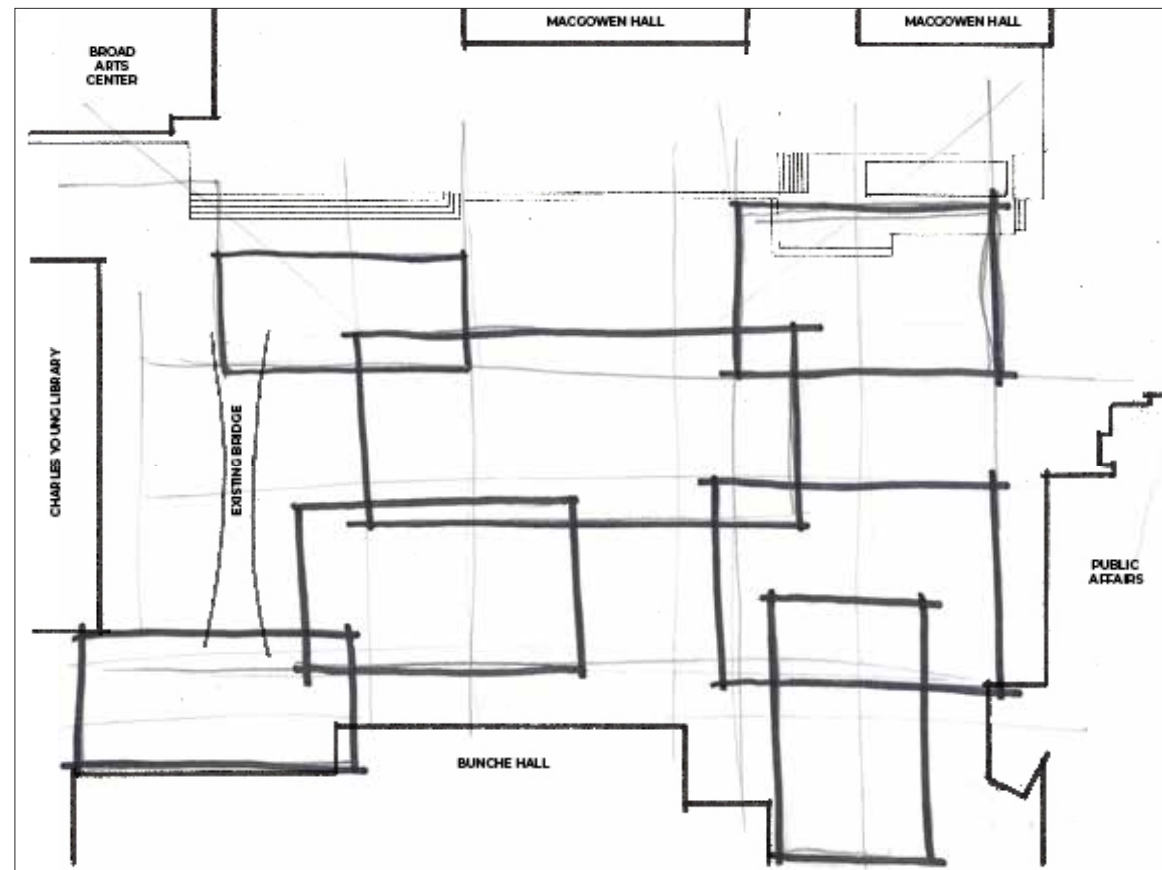
REMIMAGINED



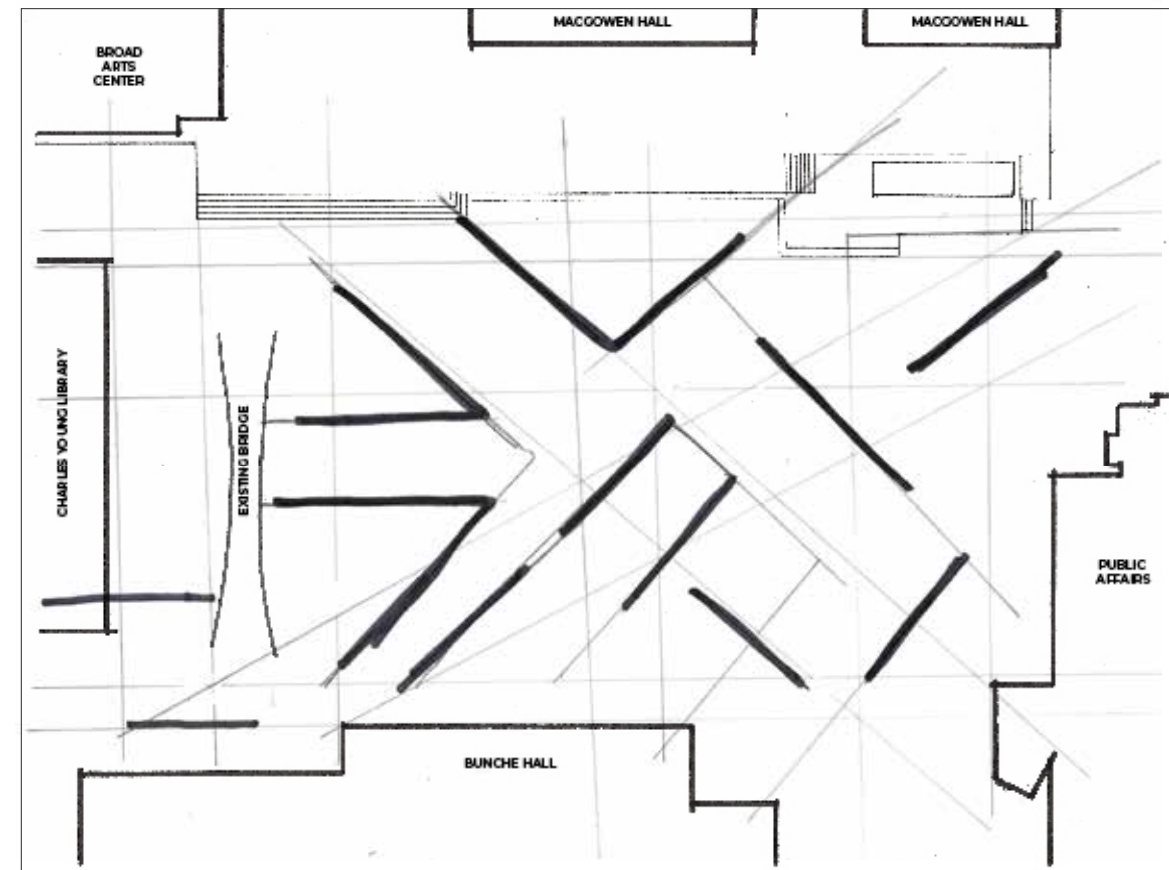
AIMEE KIRBY
LANDSCAPE DESIGN 2
WINTER 2022



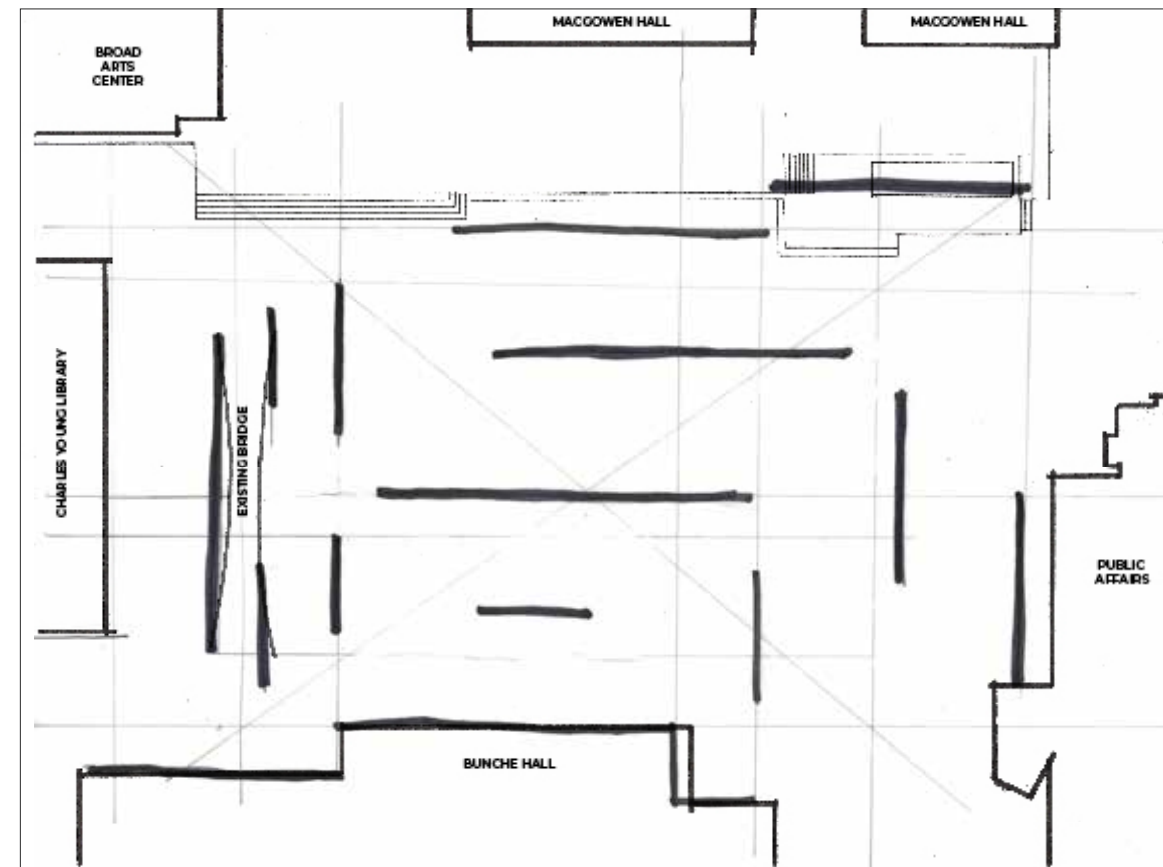
INTERSECTING ELEVATION



ENCLAVE EXPERIENCE

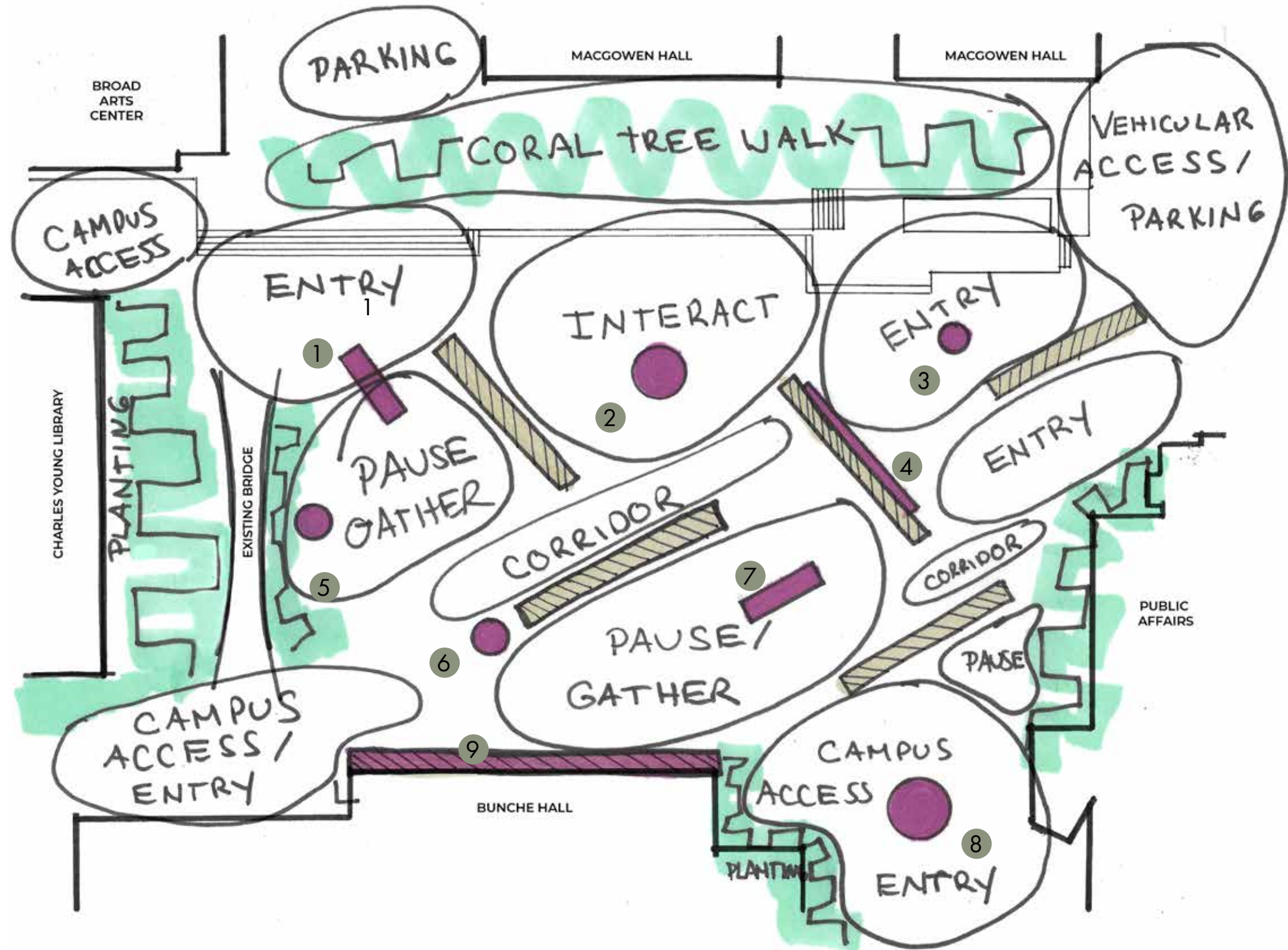


CORRIDOR CONNECTIVITY



CORRIDOR CONNECTIVITY

- 1. HENRY MOORE
TWO PIECE RECLINING FIGURE NO.
- 2. ISAMU NOGUCHI
SLIDE MANTRA
- 3. JACK ZAJAC
RAM HEAD WITH BROKEN
HORN VI
- 4. TONY BERNARD ROSENTHAL
ABSTRACT PLAQUE
- 5. LYNN CHADWICK
ENCOUNTER VIII
- 6. JACK ZAJAC
BOUND GOAT
- 7. JACK ZAJAC
BOUND GOAT
- 8. GORDON NEWELL
HORIZONTAL FORM
- 9. ISAMU NOGUCHI
MOUNTAIN BREAKING
THEATER







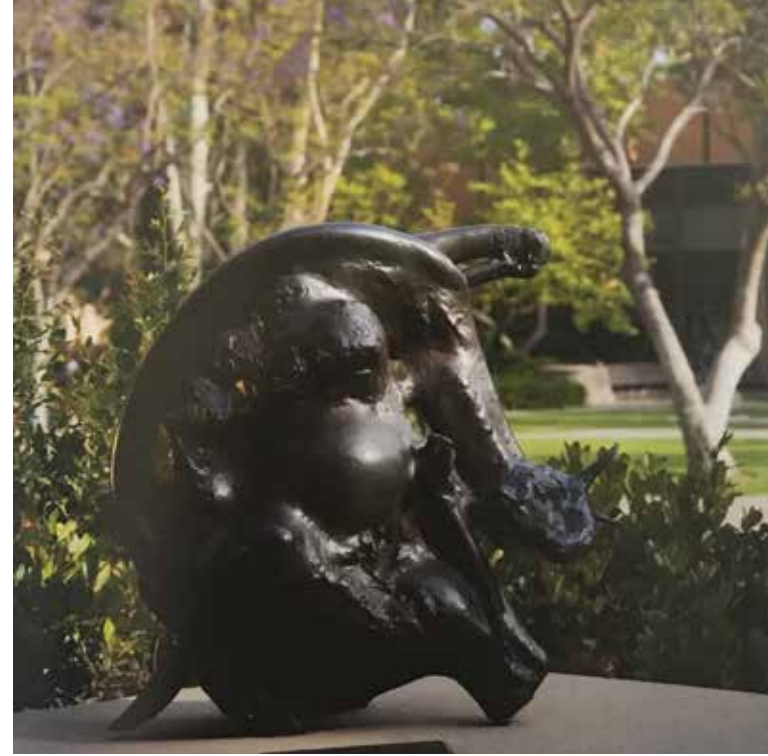
● SCULPTURE SELECTIONS

MURPHY SCULPTURE GARDEN REIMAGINED

LYNN CHADWICK
ENOUNTER VIII - 1957 - BRONZE
73"H x 21"D x 28 1/5"W



JACK ZAJAC
BOUND GOAT - 1973 - BRONZE
29"H x 28"W x 19 1/4"D



TONY BERNARD ROSENTHAL
ABSTRACT PLAQUE - 1964 - SHEET BRONZE
62"H x 112"W x 16 1/4"D



JACK ZAJAC
RAM HEAD WITH BROKEN HORN VI - 1963 - BRONZE
57"H x 58 1/2"W x 34 1/2"D



ALBERTO BURRI
GRANDE CRETTO NERO - 1977 - FIRED CERAMIC
198"H x 50'L x 17"D



HENRY MOORE
TWO PIECE RECLINING FIGURE NO.3 - 1961 - BRONZE
62"H x 110"L x 52"D



GORDON NEWELL
HORIZONTAL FORM - 1970 - BRONZE
21"H x 61"L x 17"D



ISAMU NOGUCHI

SLIDE MANTRA - 1986 - CARRARRA MARBLE
198"H x 50"L x 17"D

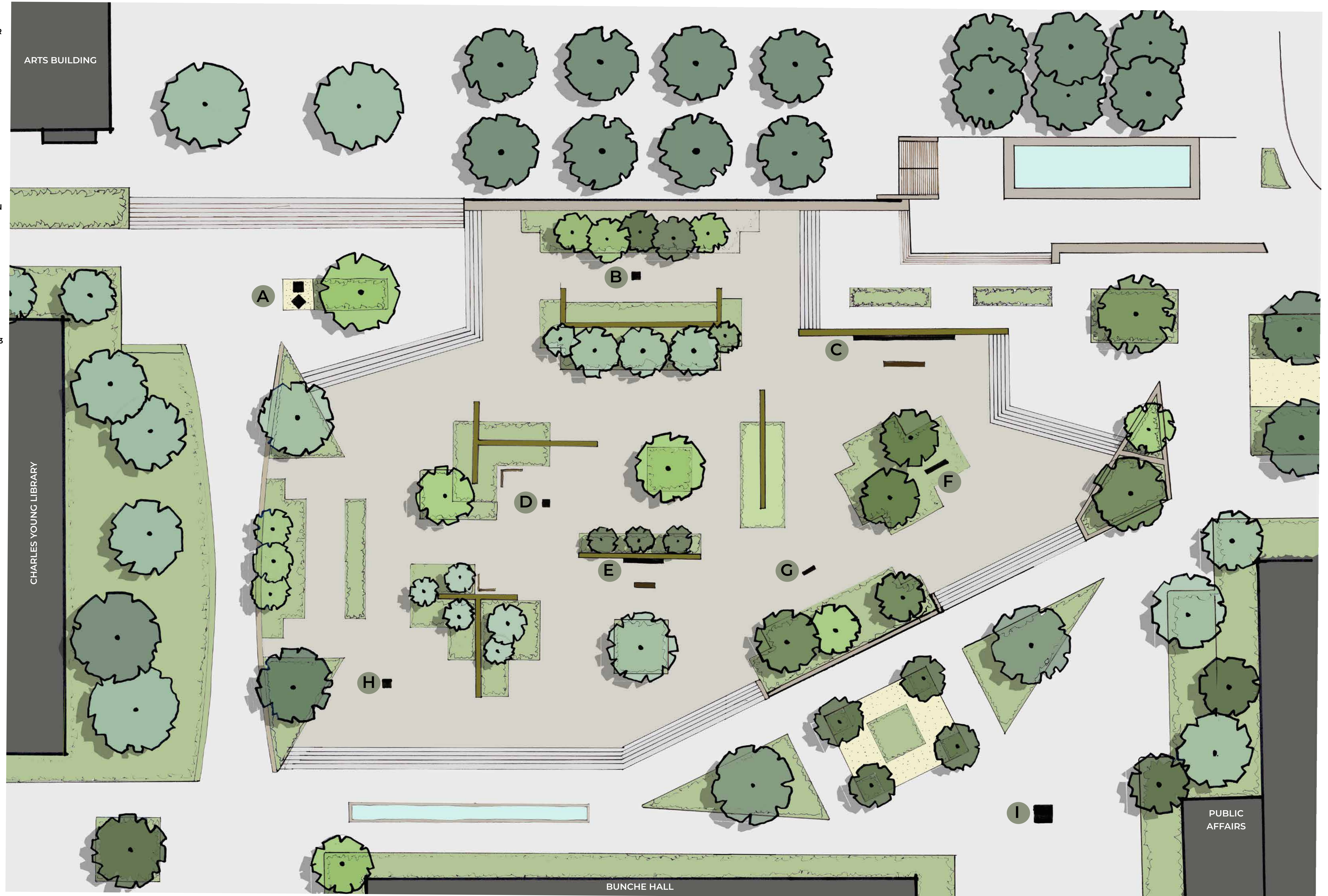


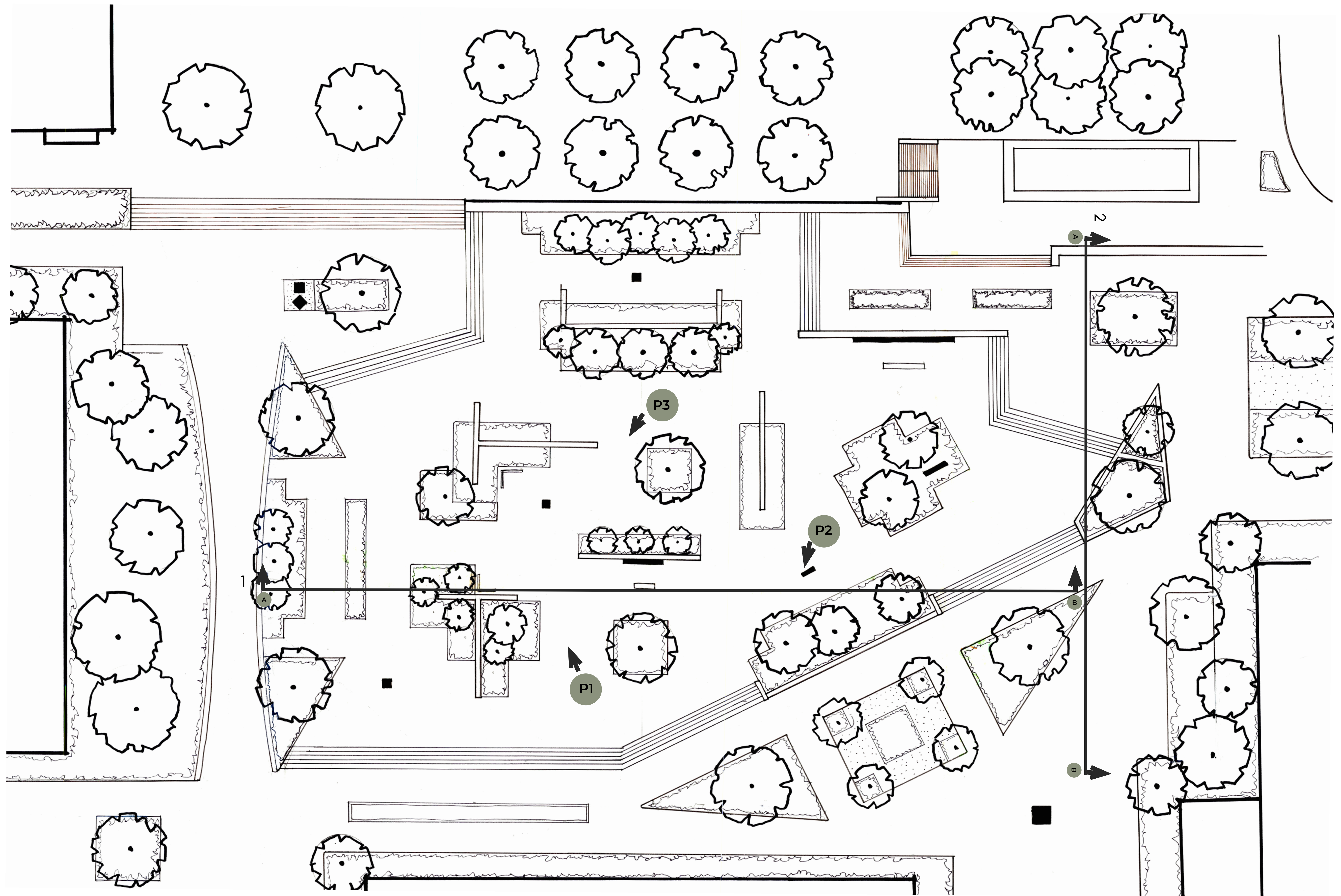
ISAMU NOGUCHI

MOUNTAIN BREAKING THEATER - 1984 - BASALT
(L) 51 7/8"H x 56"L x 30"D (R) 60 3/4 "H x 38 1/8"L x 30 5/8"D

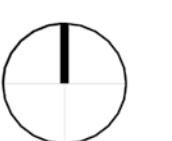


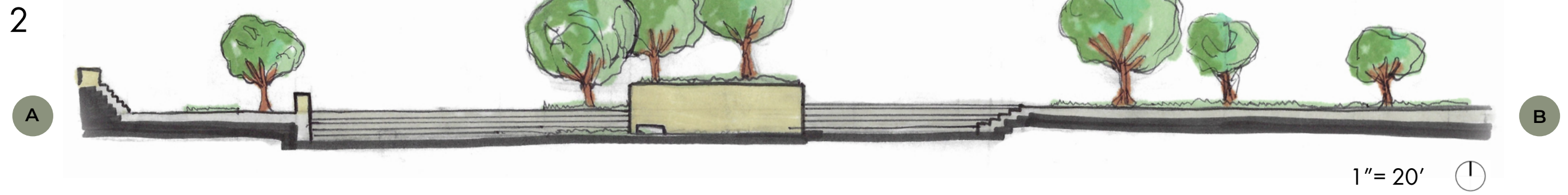
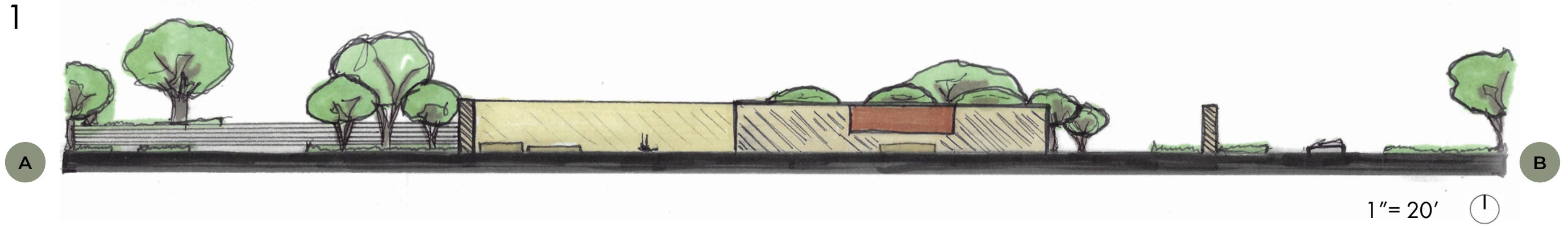
- A** ISAMU NOGUCHI
MOUNTAIN BREAKING THEATER
- B** JACK ZAJAC
BOUND GOAT
- C** ALBERTO BURRI
GRANDE CRETTO NERO
- D** JACK ZAJAC
RAM HEAD WITH BROKEN HORN
- E** TONY BERNARD ROSENTHAL
ABSTRACT PLAQUE
- F** HENRY MOORE
TWO PIECE RECLINING FIGURE 3
- G** GORDON NEWELL
HORIZONTAL FORM
- H** LYNN CHADWICK
ENCOUNTER VIII
- I** ISAMU NOGUCHI
SLIDE MANTRA





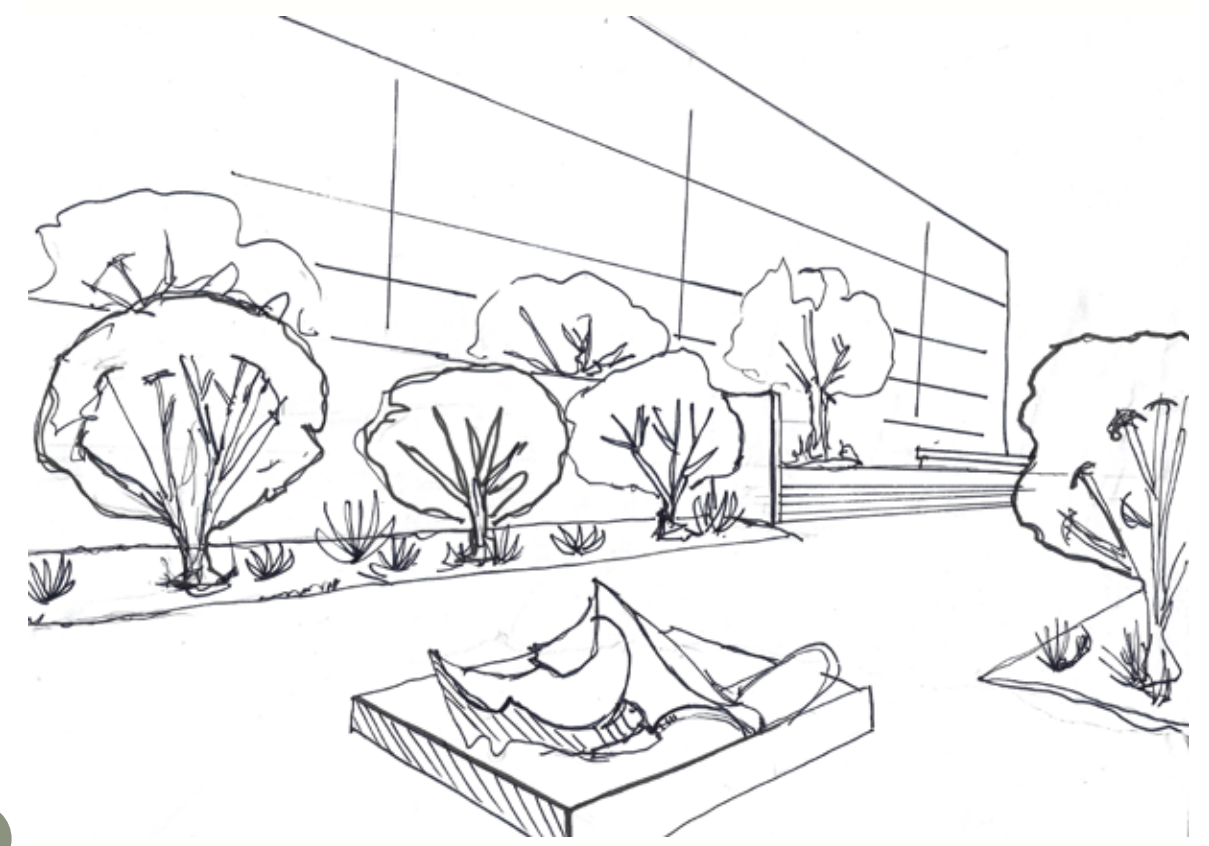
1" = 20'



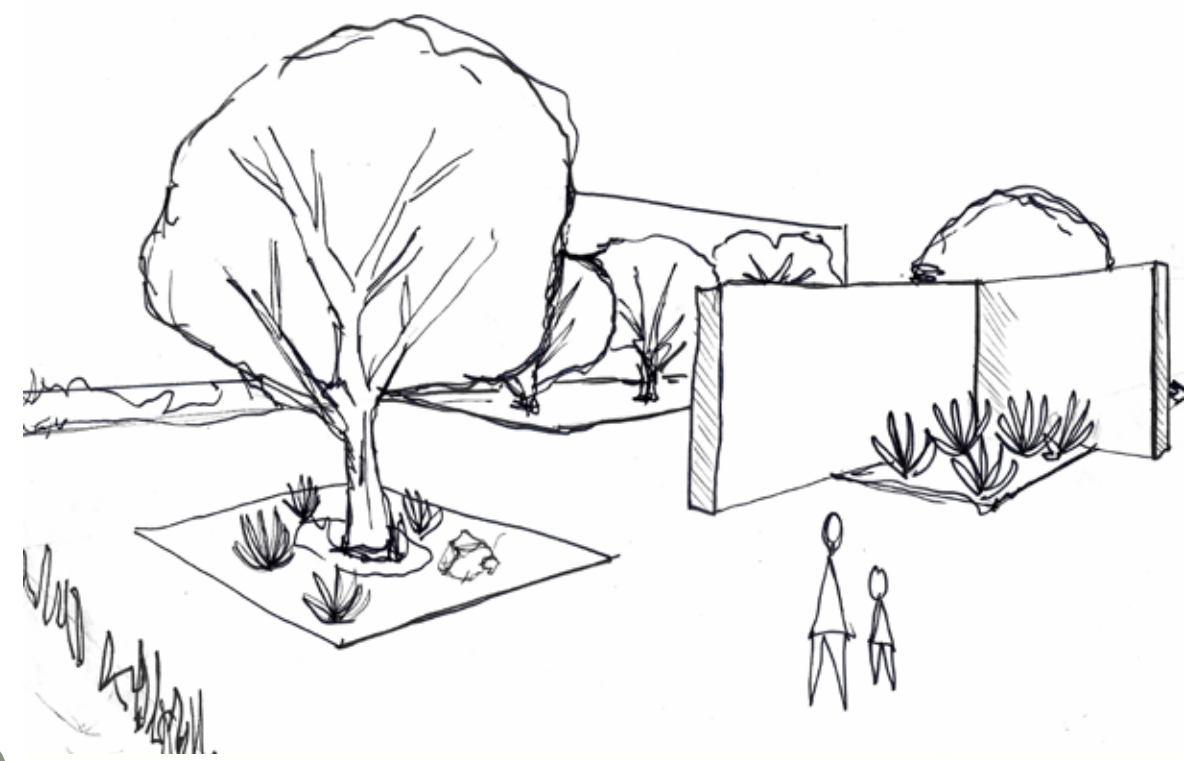




P1



P2



P3



MURPHY SCULPTURE GARDEN

REMIMAGINED

