



CASCADING TERRACES

UCLA MacGowan Courtyard

Landscape Design I

Winter 2022





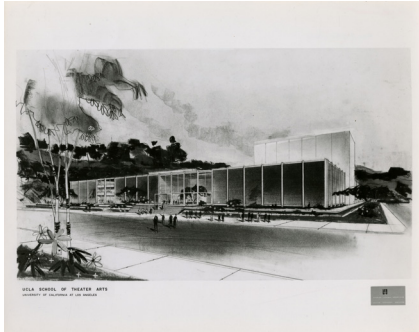
MacGowan Courtyard at sunset
Plays of light, shadow, and reflection are a key feature of the space.



Left: Keller Fountain Park¹
Right: Northeastern University Student Center²
Modulating the ground plane creates visual interest.



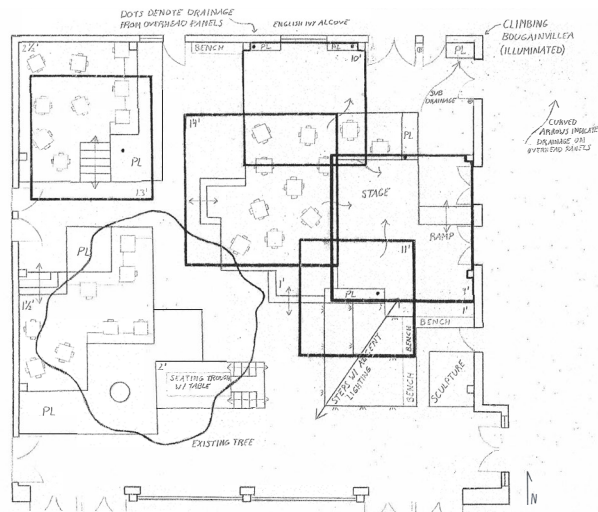
Left: Museo Xul Solar
Right: UCLA Bunche Hall Palm Court
Modulating the ceiling plane creates intimacy and regulates light.



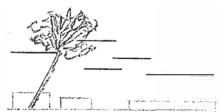
Top: Reception at courtyard
Bottom: Mid-century site rendering³
The courtyard's current mid-century design by Charles Luckman Associates represents a historic period of expansion for UCLA and embodies the ideal of democratic participation in public education and the arts.

| Site Context & Function | Circulation & Space | Scale | Visual Balance | Light | Drainage | Opportunity/Intervention |
|-------------------------|---------------------|-------|----------------|-------|----------|---|
| ● | | | | | | Maintain brise soleil for cohesion with west side of MacGowan Hall and nearby modernist buildings. |
| ● | | | | | | Unify the space with its arts setting (i.e., theater, sculpture). |
| ● | | | ● | | | Site is officially a vestibule for theater. Adjacent sculpture garden functions as both university quad and park space for surrounding community. Create a space adaptive to both formal and informal programming. Interior design must be welcoming and attractive when viewed from the exterior. |
| | | ● | | ● | ● | Remove roof for additional light; replace with truss and/or panel system to retain sense of enclosure. Suspended panels can modulate vertical scale, regulate natural light penetration, and channel water. |
| | ● | ● | | ● | ● | Trees provide shade and aid in water management through uptake. Canopies modulate the sky plane, translating site verticality to human scale. Can serve as natural anchoring points to guide circulation. |
| | | | | ● | | Brise soleil and reflection off walls create plays of light throughout the day. Introduce artistic elements or plantings which accentuate the unique effect. |
| | ● | | ● | | | Provide clear sense of circulation for busy events and embrace asymmetry. |
| | ● | | | | | Mitigate for 10+ doorways in a small space. |
| | | | | | ● | Regrade site and channel water away from center |

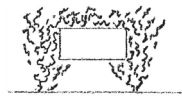
¹The Cultural Landscape Foundation | ²Northeastern University | ³UCLA Archives



Plan Concept

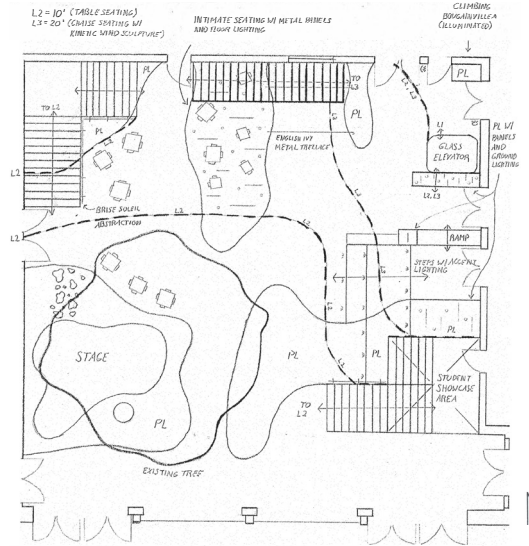


Section Concept

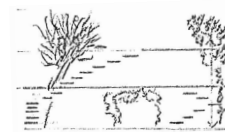


Alcove Concept

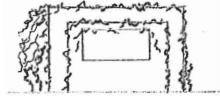
Alternative I is based on a 6' grid overlaid onto the site. Overhead panels are suspended from a truss extending across the courtyard. Together with a modulating floor plane, the varying heights of suspension create "rooms" with different degrees of intimacy. The panels serve to shield sun, particularly in the summer months when the angles are high. In section, the panels are arranged to convey leaves rhythmically departing the tree canopy. A climbing bougainvillea serves as a dramatic backdrop in the northeast corner of the site, drawing the eye up and away from the utility doorways below.



Plan Concept

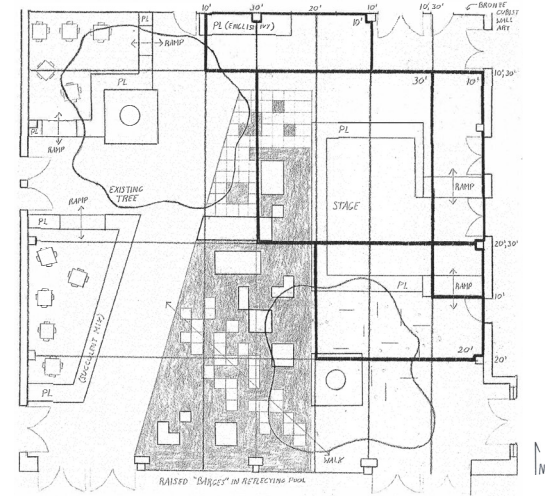


Section Concept

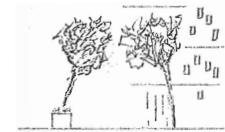


Alcove Concept

Alternative II introduces organic forms into the otherwise orthogonal site. Its three-level layout creates an amphitheater for viewing the stage area in the southwest corner. A bougainvillea vine visually connects all three levels in the northeast corner and is a spectacle when viewed from inside the glass elevator. English ivy adorns the shaded areas under the balconies. As a design detail, this alternative incorporates dividers that are an abstraction of the brise soleil.



Plan Concept

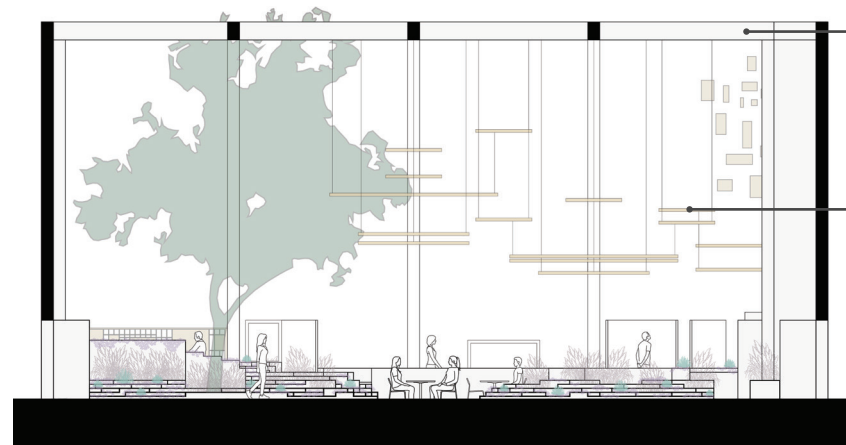


Section Concept



Alcove Concept

Alternative III is based on a diagonal drawn from the west entrance to the ticket window. A reflecting pool slices the site, and is overlaid with a 1.5' grid for determining the placement of stepping stones and "floating" seating platforms. Water dissolves into pavers as one moves north along the pool. Rods treated to match the brise soleil are secured at 10, 20, or 30' overhead, horizontally spaced to align with the wall beams. Planes extend between the rods to provide shade and enclosure. A bronze cubist art installation is affixed to the northeast corner to interact with afternoon sunlight.



Section A-A'

Sky Plane Truss

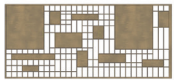
Replaces existing roof and encloses the space as a continuation of wall columns;
Provides support for overhead panels

Overhead Panels

Arranged to evoke leaves rhythmically departing the tree canopy

Exhibition Wall

Abstraction of brise soleil;
For showcasing past performances and student work



Recessed Lighting

Projects ambient light upwards along walls

Terraced Planters

Modulate floor plane and enclose space

Cubist Art Installation

Shimmers of bronze through overhead panels draw eye up and away from corner of doors

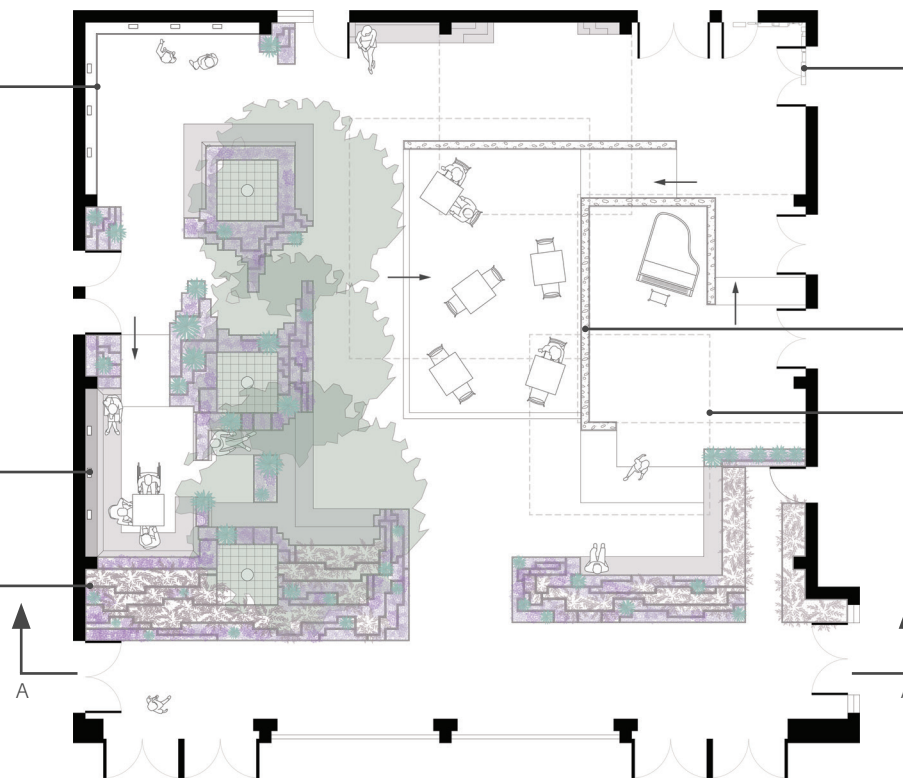


Raised Pebble Troughs


Catch and channel rainwater falling from overhead panels

Overhead Panels

Modulate ceiling plane to create sense of intimacy



Plan View

1/16" = 1' - 0" 



Planting Palette
 Red Fountain Grass (*Pennisetum setaceum*)
 Blue Fescue Grass (*Festuca glauca*)
 Creeping Thyme (*Thymus serpyllum*)



Retaining Wall Material
 Wood Stamped Concrete



Overhead Panel Material
 Plyboo® Bamboo Panels

