

## Site Evaluation/Field Notes 3 - **Old Town Pasadena**

Site Address: 198 S Raymond Ave, Pasadena, Ca 91105

Old Pasadena dates back to the turn of the 1900's with hay barns and orange groves.

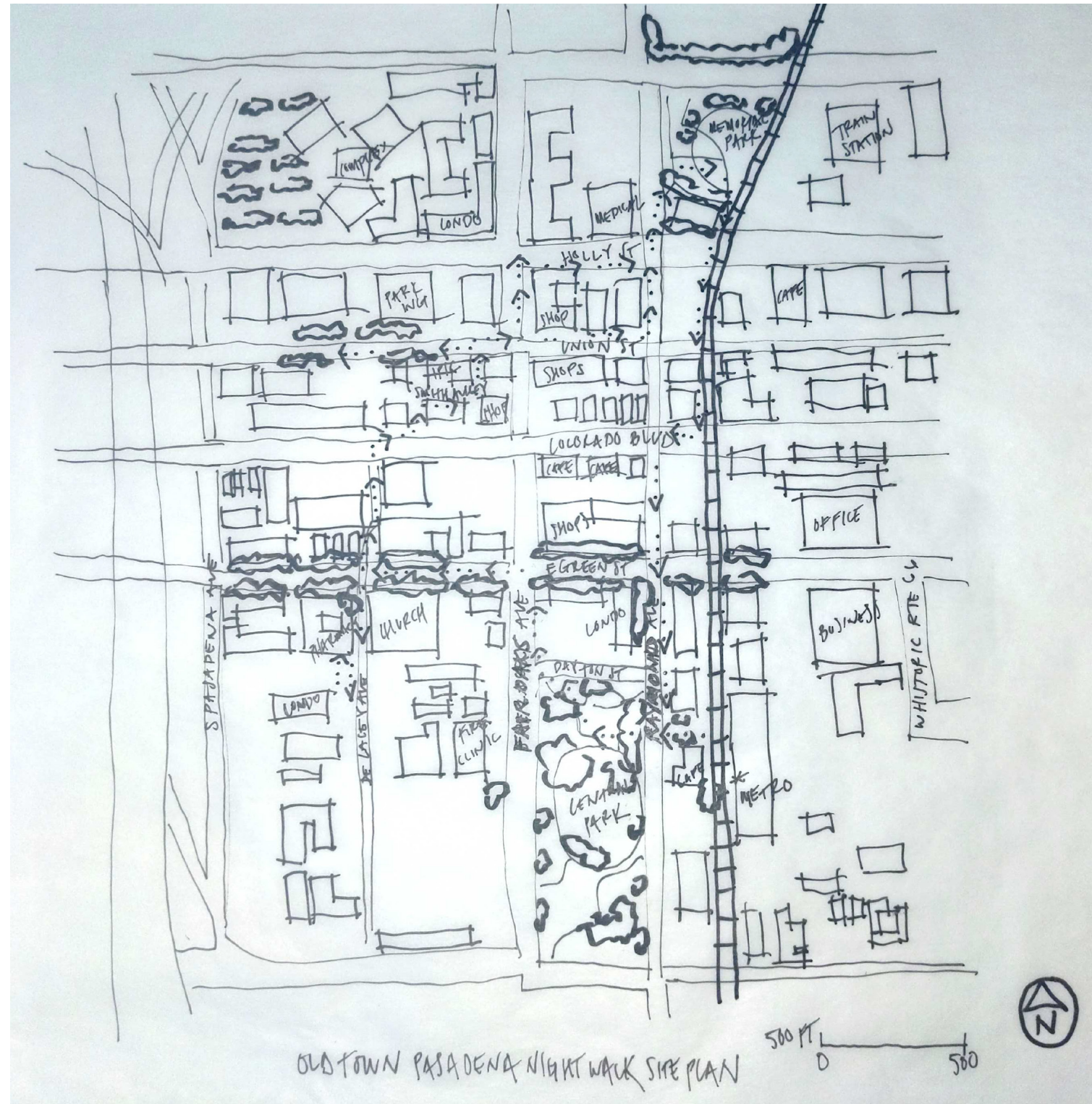
In 1920's Colorado Blvd. was pushed back 14' with street lined victorian villa facades.

Today the city holds 2,027 population and 336 million in revenue annually.

Ammenitites of the city are train station with two access rails, two parks, shops, businesses and many cafes.

Here within these field notes outlines how the old town is successful and appeals to Pasadena users.

By Ristin Wilson Winter 2022 Human Factor in Landscape Architecture Professor Eileen Alduenda



### **Initial Perceptions:**

- a. the city appeals to the people with large store front windows for viewing of people in and out of the window
- b. Layered interior courtyards for outdoor dining
- c. Mixed use buildings for living above and store fronts below
- d. The community is organized with direct access to metro

### **Reflections on Quotes:**

“We work with the community and law enforcement in a cooperative effort to enhance and promote Old Pasadena as a unique, authentic, and vibrant downtown experience.”

- a. The city has all the vibrancies of a downtown atmosphere, yet has the quaintness of old time boutiques with lots of people walking and store front windows.
- b. The city has dangers, but police patrol on every street.

### **Indicatons On Site Map:**

- a. Busy street life
- b. Well organized city streets
- c. The street designs match the size and style of building facades
- d. The city is designed for the passerby
- e. Lots of environmental and social factors, like trees for shade, large scale night lighting, bike racks, and historical building facades
- f. Hidden building corridors for cut through walks
- e. Pocket allies for outdoor seating and dining





AVALON DEL MAR STATION COURTYARD SKETCH

**Avalon Del Mar Station Courtyard:**

a. transit orient development with congress for urbanism, old train station building physically moved to this location, several cafe courtyards, ADA accessible for train access, wonderful large scale around train station in relation to large scale of train.

**Sensorially Evaluations Observed:**

- a. Walking across Avalon Del Mar Station Courtyard there is low to escalating rails sounding as the train pass by
- b. Smell of cuisine
- c. Shade of 5 story building offers cool breezes
- d. Hearing piped in low music playing in the distance

**Reflections on Readings:**

- a. Spaces defined by building fronts and plantings
- b. Paths are the sidewalks with destinations
- c. Edges move the user forward and offer a place of refuge
- d. Foci is the abundant focal points, so much to look at
- e. Thresholds are the tall buildings and trees making it vertical

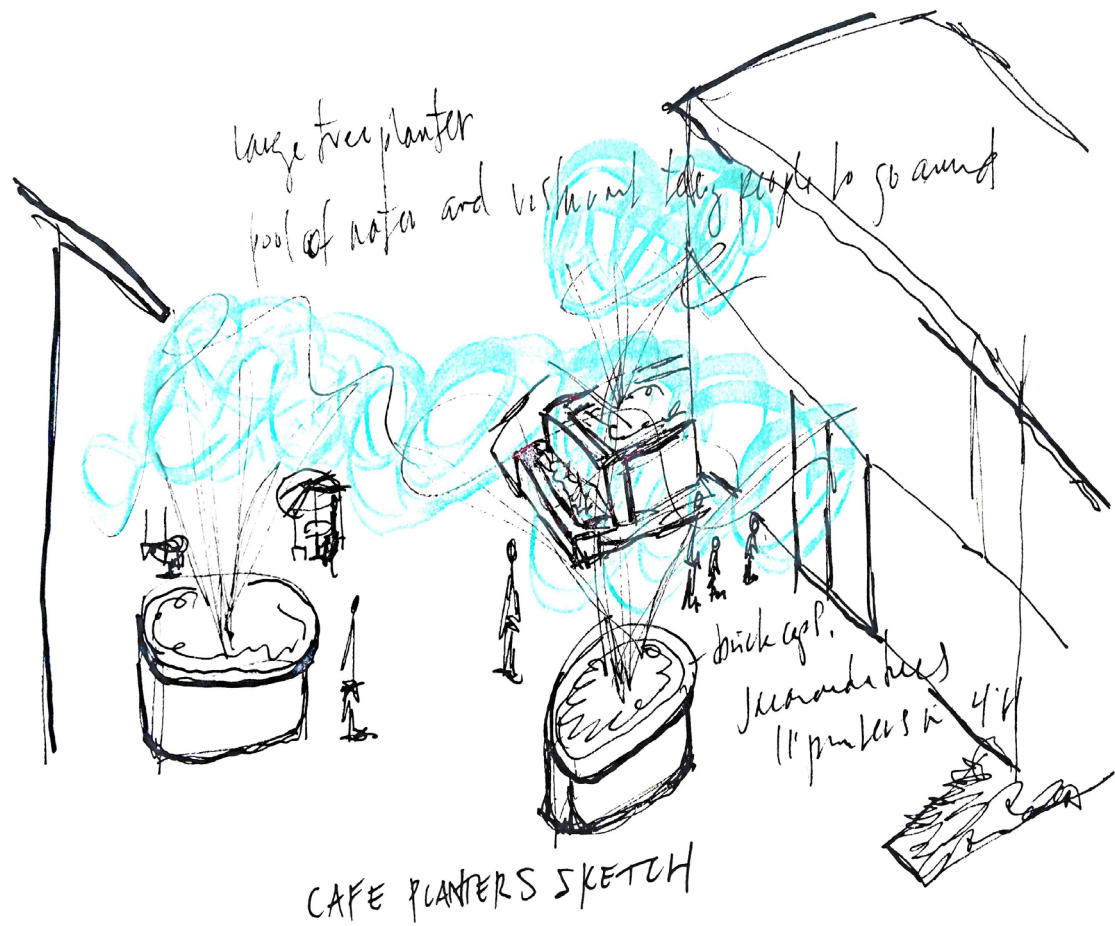
**Site Evaluations Observed:**

- a. Bottom retail space / apartments above
- b. Canopy awnings and store fronts
- c. Cool breezes and tree lined streets
- d. First floor on all buildings the same height
- e. Outdoor dining between buildings
- f. Width of paths are comfortable and accessible
- g. First floors all have large window for viewing in and out
- h. Street lamps line all streets and courtyards
- i. Safety with no views blocked
- j. Lots of signage on the structures, large lettering for distance
- k. Very successful walk for the individual user with a destination

**Observations To Lead To More Successful Space:**

- a. Better connection for roof water to adjacent planters
- b. More seating in the courtyards spaces, there were benches on the streets, and only cafe dining in the courtyards
- c. More greenery in the interior of the streets, possibly more pottery in front of building facades

Site Evaluation/Field Notes - **Old Town Pasadena**



**Comfort And Image:**

- a. Pasadena presents itself well to do with lots of attractions at each store front
- b. Presents itself clean, although lots of homeless people, the police patrolled each street repeatedly
- c. The fabric is the spacial structure of the space
- d. Most of the seating was for dining and street benches, more seating needs to be on interior courtyards and store fronts.

**Access And Linkages:**

The interior walk of the city sidewalks is aided by visual interests, building facades and window decore. The width of the sidewalks makes the journey comfortable. All the viewing through the large window e enjoyable.

**Post Occupancy Evaluation Successful? Yes!**

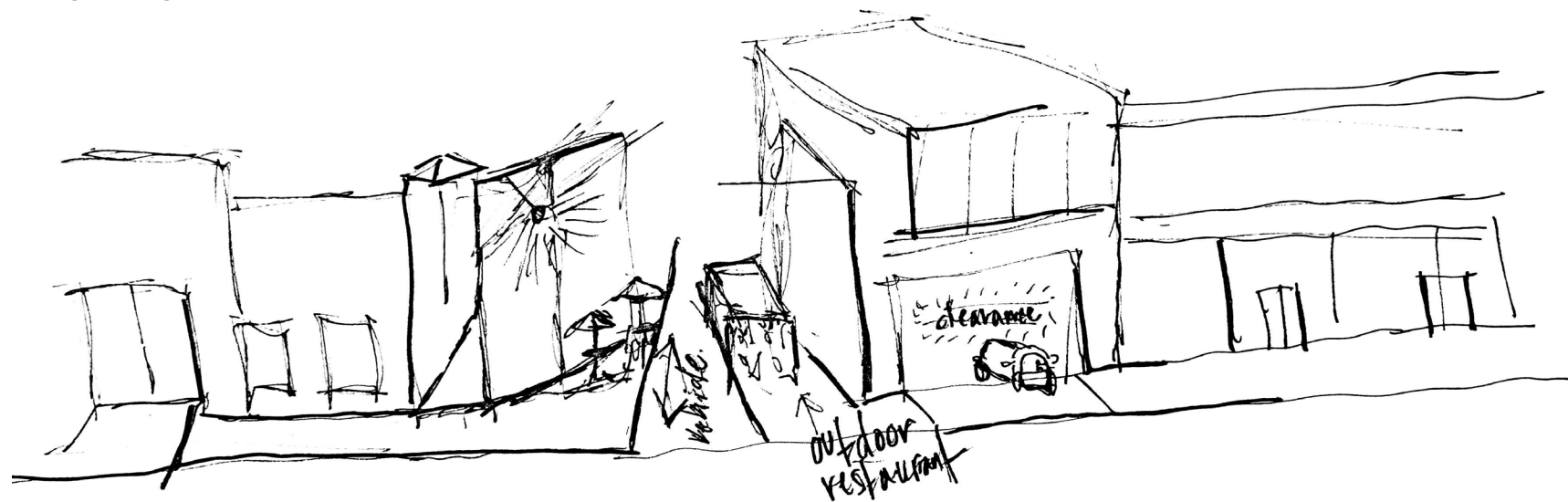
- a. Very strong access and gateways designed for people in great groupings or solo
- b. People follow behind one another to their destination
- c. Topography was level with few steps and people feel comfortable walking the side walk and parks, one park was elevatated and returned back down
- d. More shade is needed from the heat of the sun
- e. The same context repeated, store front and cafe after store front and cafe
- f. Private space marked by planters and large signage, usually and interior courtyard was private
- g. More seating is needed on streets and in courtyard spaces
- h. People engaging in leisurely activities and a very fast pace when getting to the train
- i. Building facades were grand and observed as focal points looking at each entry to each building
- j. Lots of views with line of sight completely down the street
- k. Beautiful plantings and trees, but limited, need more vegetaion everywhere
- l. Beautiful city center with cafe and dining ambience, please come in and sit and enjoy!
- m. Beautiful connections to culture
- n. Night time lighting with great ambience

**Above:**

Oversized tree planters to define edges of outdoor dining, giving shade to the space.

**Below:**

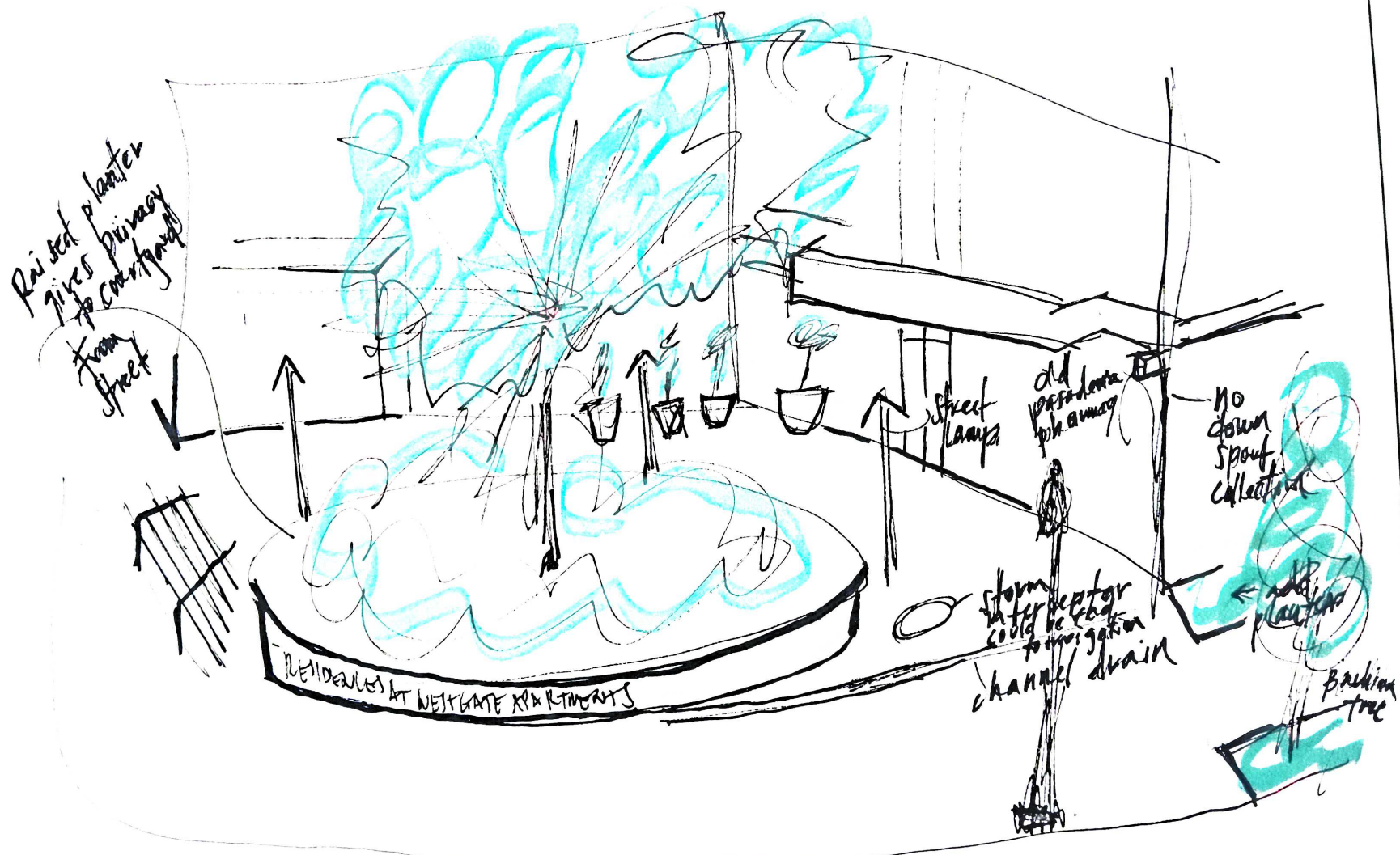
Between buildings, an alley lined with outdoor dining and lighting



Mills Place DINING IN ALLEY SKETCH



Daxton St.



S DE LACEY AVE PHARMACY COURTYARD SKETCH

**Gehl...**

- a. Repeated elements all through the walk, keeping the city uniform in appearance and ambiance

**Jacobs...**

- b. Lots of inbetween spaces lined with pottery, trees, string lighting, and outdoor lighting

**Dee...**

- c. Visually pleasing storefronts to the city with repetition of all used elements for continuity

**Ching...**

- d. Beautiful traditional architecture giving each building a sense of place and presence

**Ching...**

- e. crime prevention through good design development and re-evaluating what does not work

**What Is Going On?**

- a. Cafes for people with outdoor dining
- b. Benches line walkways
- c. People arrive and orient themselves to the city
- d. Use of beautiful architecture and materials
- e. Tall first story with large viewing windows

**Daxton Courtyard:**

This courtyard had so many distinct features, with a large raised planter to buffer the store fronts from the busy street. The tree keeps the cool microclimate. Needs added seating and roof run off connected to the planters.

**Material Selections Observed:**

This stunning tree grate of ornate steel allows the tree to remain safe and healthy.



Site Evaluation/Field Notes - **Old Town Pasadena**





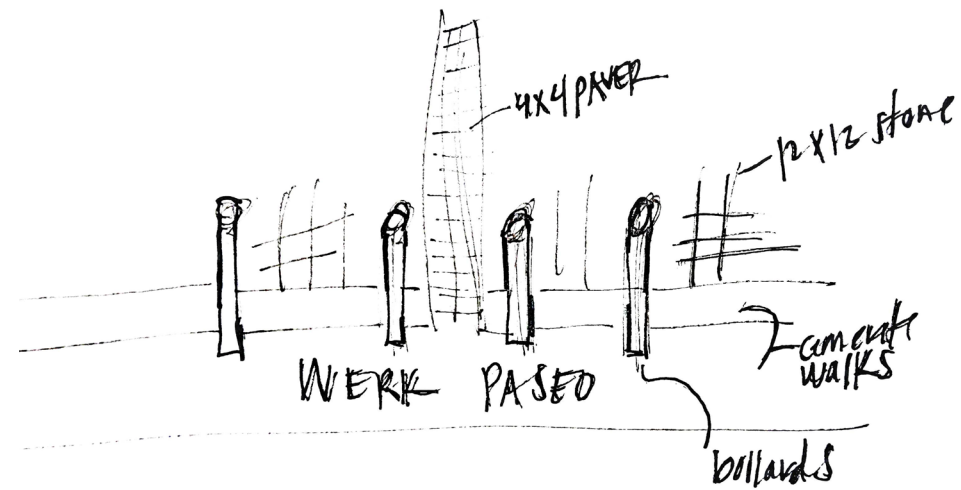
**Uses and Activities:**

Some people live in the interior of Old Town Pasadena and venture out for diner or someone to meet. Most people come to Pasadena with a destination in mind, an event, a cafe, or a shop to purchase something.

**Sociability:**

This is a meet and greet city, with the busy train station and lots of parking garages. For every store front there is a cafe and seems like the city will continue to grow their outdoor dining. The building facades give a strong sense of Old Town Pasadena and the use of hardscape material. this is a friendly and comfortable setting, with many people talking and laughing together.

DETAILED NEW DESIGNED COURTYARD ENTRY TO RESIDENCES SKETCH

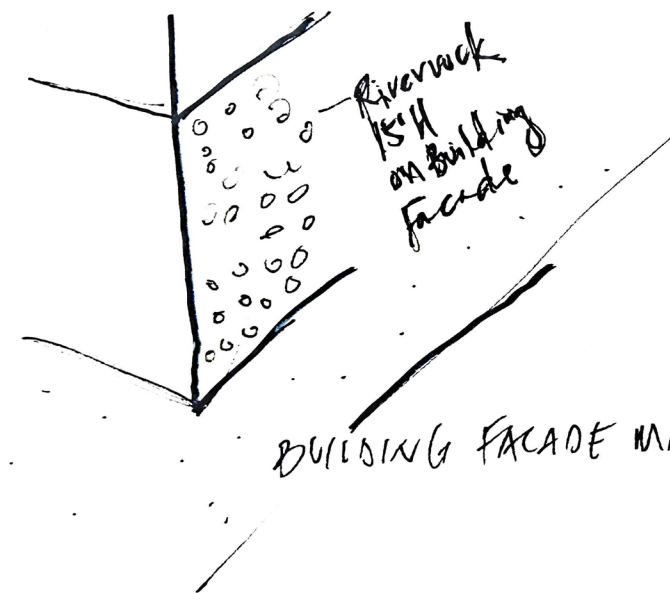


W DAYTON ST COURTYARD ENTRY MATERIAL SKETCH

**Material Selections Observed:**

The top sketch displays the modern touch of new design between existing building, with a series of adjoining spaces and a central cascading water feature. The other spaces have seating, lighting and raised stoned planters.

The middle sketch is another interior space between buildings which is actually a vehicle path, so bollards are placed for privacy of the residences, the various paving stones gives attention to detail.



BUILDING FACADE MATERIAL SKETCH W DAYTON ST

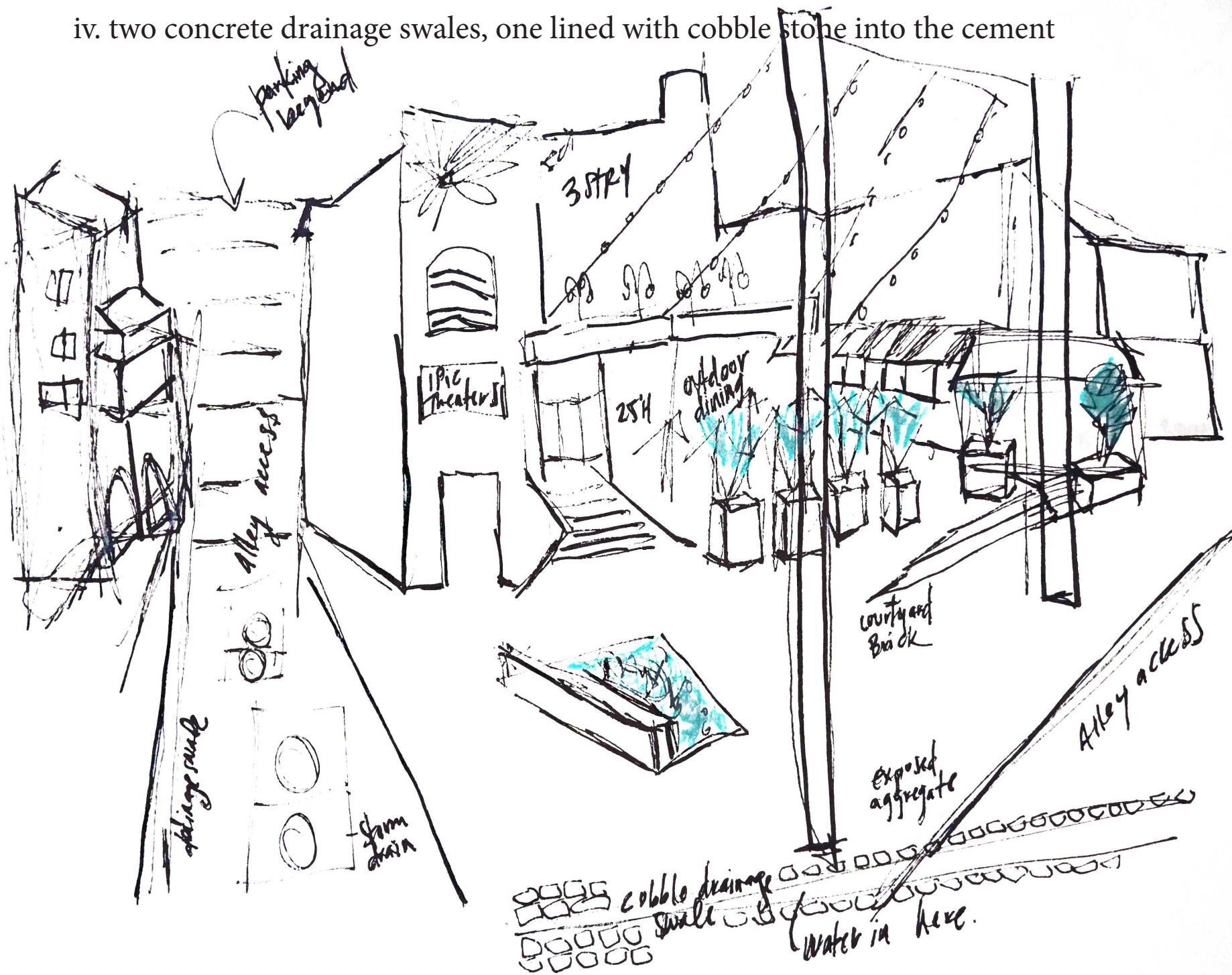
**Material Selections Observed:**

The far right sketch briefly details the front of a condo building that is 15 feet high with river rock set into the stucco of the building. Attention to high detail really gives the space a comfortable ambiance. This is a modern building refurbished and so promising as to how we can treat modern architecture with attention to every detail, helping the user feel comfortable and secure.



### Hugus Alley Courtyard Perspective Below:

- i. central courtyard in middle of buildings for outdoor dining
- ii. night lighting with string lighting from power poles
- iii. entertainment with a theater
- iv. two concrete drainage swales, one lined with cobble stone into the cement



### Reminiscent of Half Hour Hail Storm Night Of Walk:

- i. snow on ground, wet curbs, tiny pools of water
- ii. crunching snow under your feet and watching your step
- iii. damp cool breezes and drips coming from building roof tops
- iv. wet leaves and sparkly lights, water in gutter

### Compare and Contrast Reflections on Dee Readings:

- i. An example of “material, form and fabric” is the use of organized and conceptual framework guided through A@B with the guided pathways lined with foci building facade and accentuated with repetition of greenery at the ground plane, foreground and skyline of tree canopies.
- ii. One example of “material, form, fabric” that the landscape reflected and related to in Old Town Pasadena is how the store fronts were layered architecture accentuating the use of hardscape on the ground plane, window panes in the foreground and the skyline reflected with street lights, tree canopies and building cornices.
- iii. Old Town city sidewalks resembles A@B and its outdoor nature to bring people to the street for leisurely activities, with the use of seating and dining and strolling. The one contrast is A@B is more for larger groupings of people moving together and Old Town is really the individual walker meeting people at a destination for a gathering, unless there is a large, gathering in the park.

### Reflections on Gehl Readings:

- i. People watching reflecting movement and interactions with one another
- ii. Counting amenities in the street scapes, park benches, tree locations, paths of travel, bike racks, train stops

Site Evaluation/Field Notes - **Old Town Pasadena**