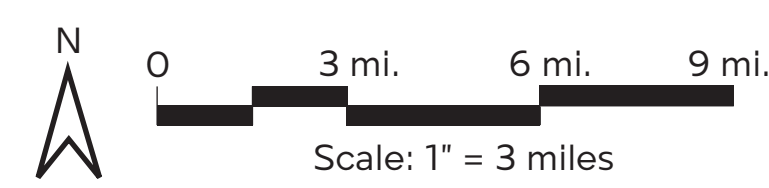
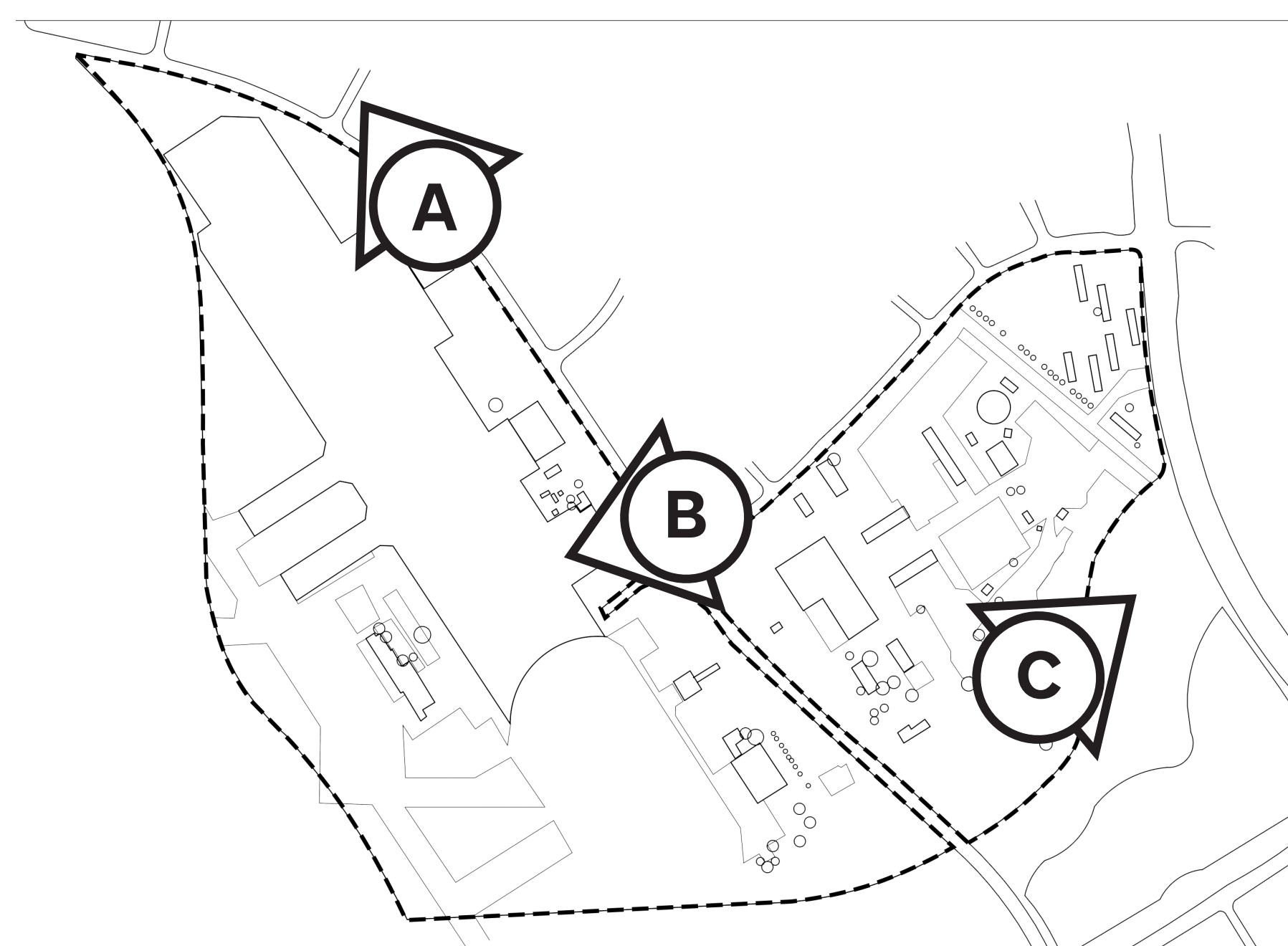


# GREAT PARK BOTANICAL GARDEN MASTER PLAN

This **redevelopment project** transforms a post-military site into a vibrant **botanical garden** within Irvine's Great Park through the creation of a long-range master plan guiding future design and development.



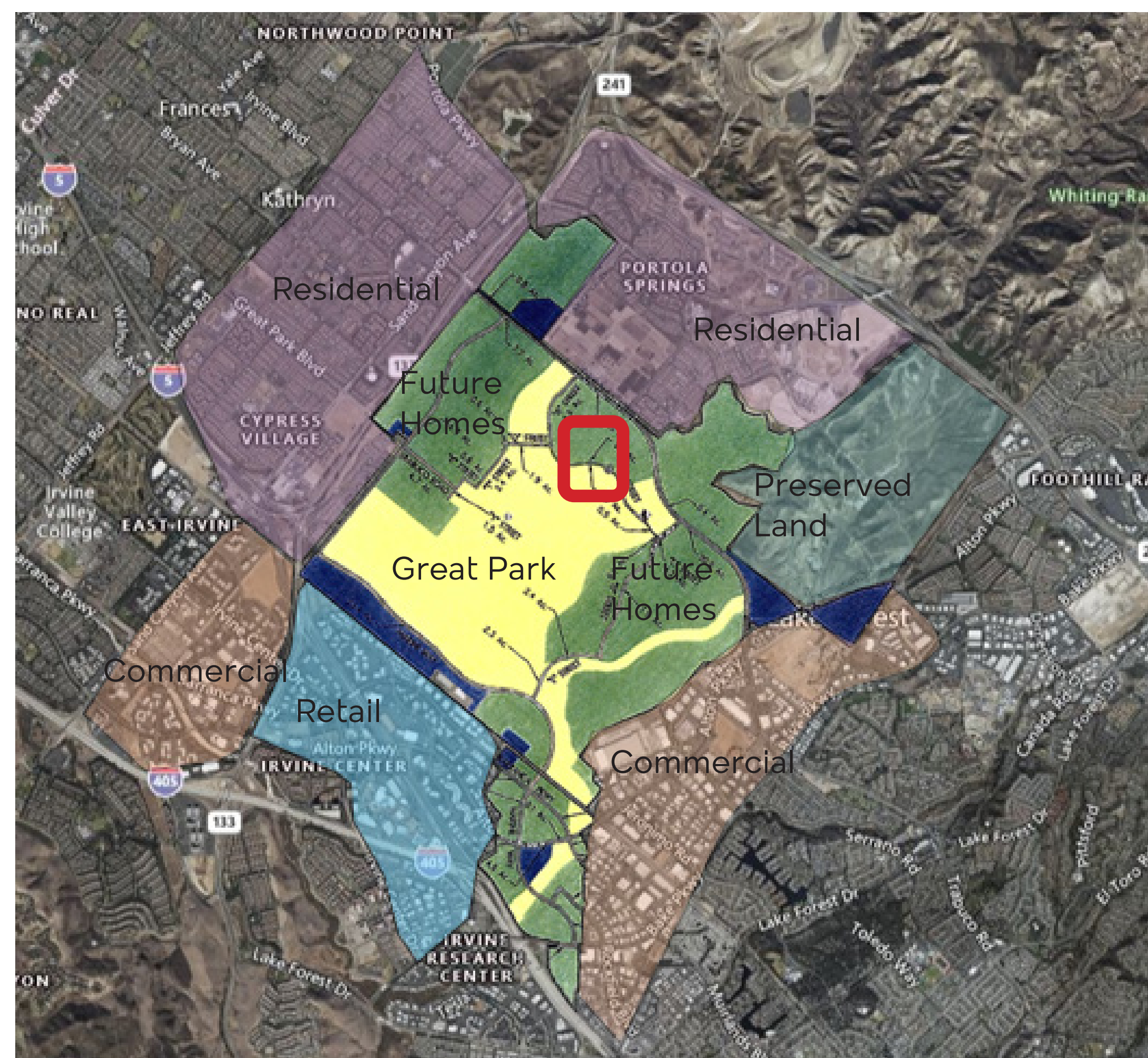
REGIONAL MAP



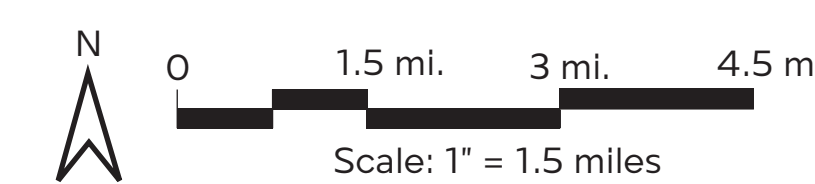
KEY MAP - SITE PHOTOS



A. Residential edge condition, northern edge



Context Diagram  
Imagery: Google Earth 2022



Legend	
	Area of enlargement
	Great Park - City of Irvine
	Future residential
	Residential
	Future development
	Retail
	Industrial/Commercial
	Preserved land

## PROJECT GOALS AND OBJECTIVES

- Provide space for education**

**Objective 1A:** Create a space that will serve as a hub for education on **conservation, sustainability, and regenerative practices.**

**Objective 1B:** Provide **agricultural history and botanical education.**
- Utilize sustainable and regenerative practices**

**Objective 2A:** **Re-purpose buildings and materials** from the air station.

**Objective 2B:** Incorporate **climate-adapted species, carbon sequestration, stormwater capture** and mitigate heat islands.
- Create new habitat**

**Objective 3A:** Create habitat through **plant selection and site design** to augment the nearby chaparral areas.

**Objective 3B:** Provide space for **user experiences and engagement** in natural habitats.
- Attract residents and tourists**

**Objective 4A:** Provide unique **botanical experiences** for the local community and broader region.

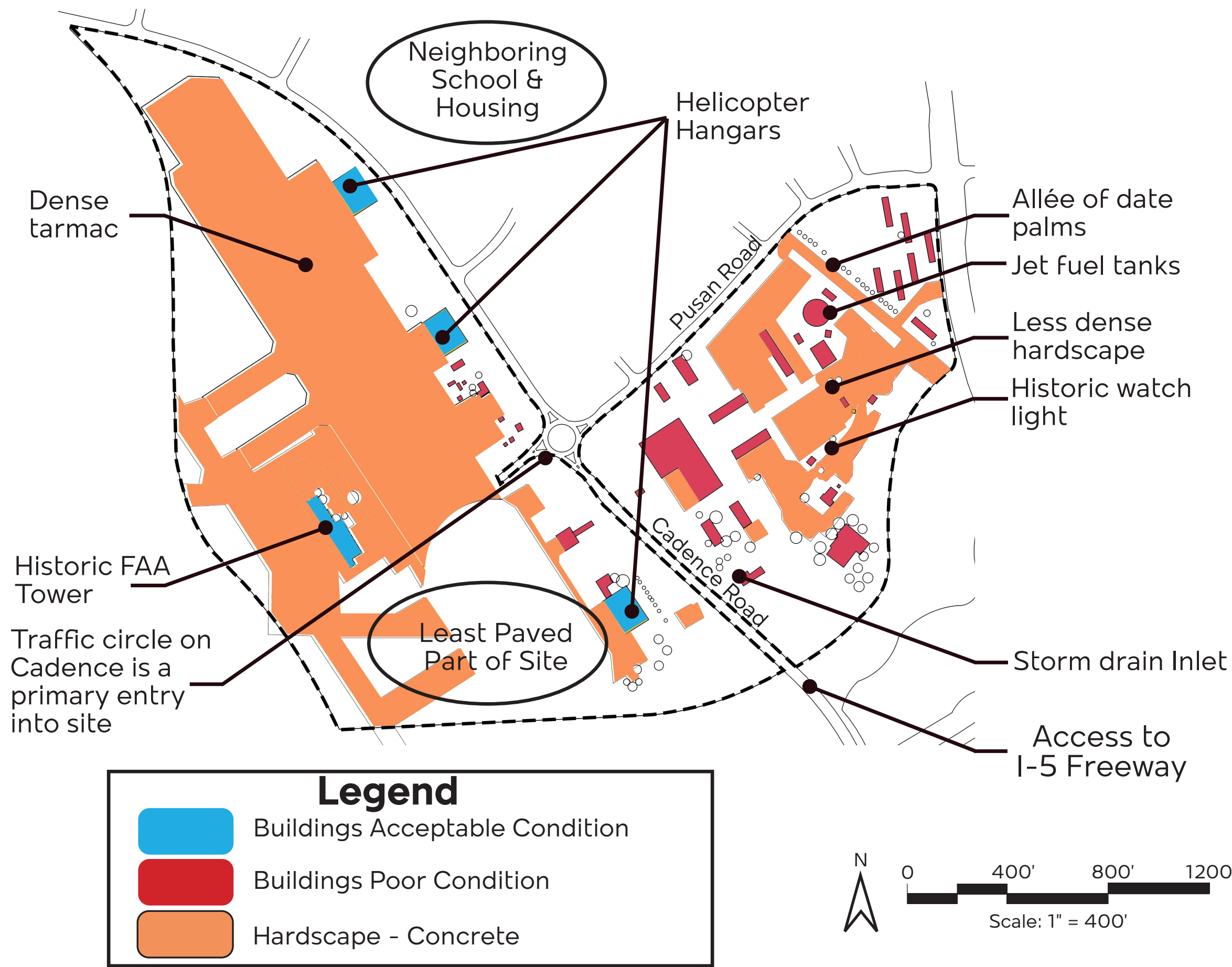
**Objective 4B:** Provide experiences and spaces fostering multi-generational interactions and **benefits for all ages and abilities.**



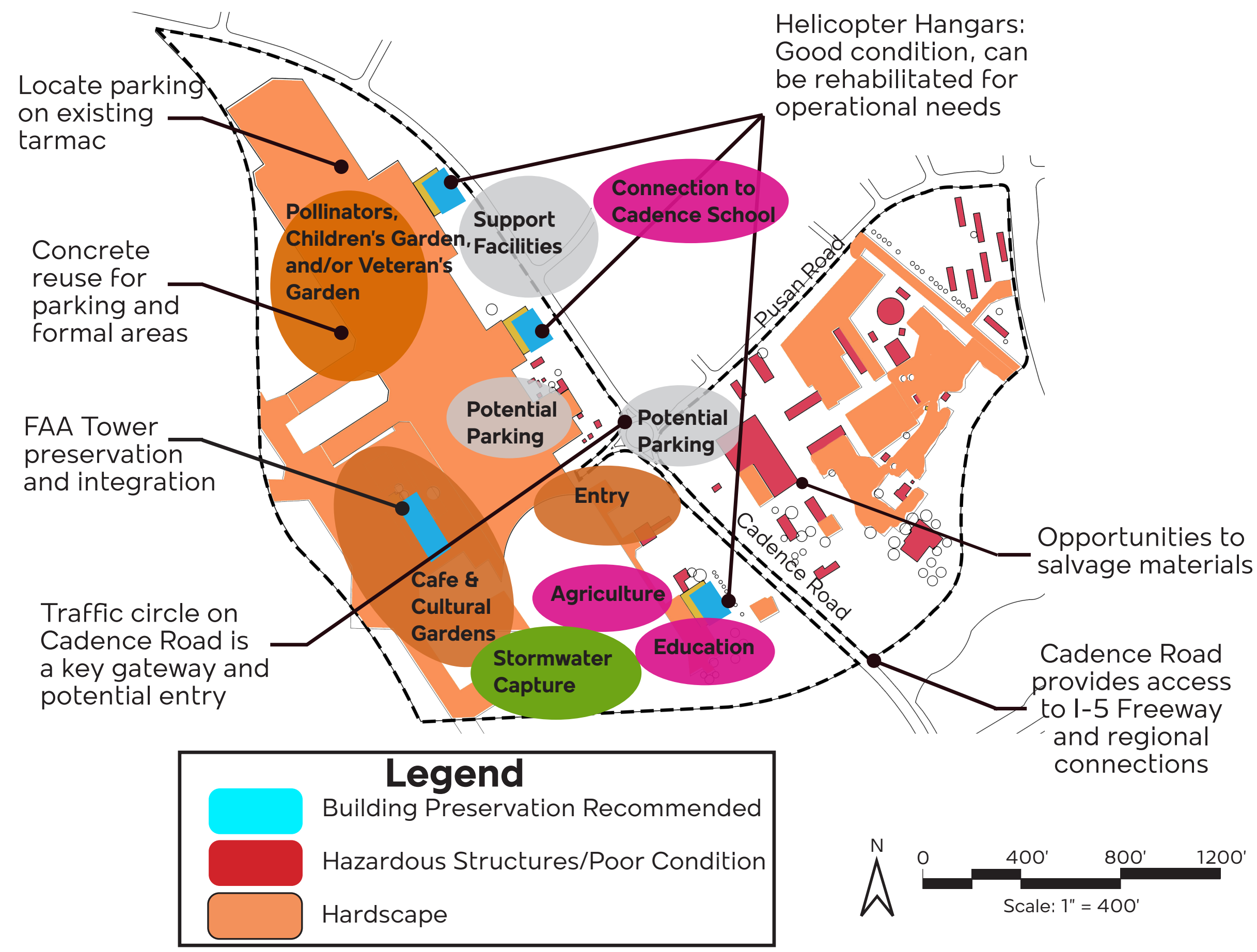


# SITE CONDITIONS AND ANALYSIS

## EXISTING CONDITIONS



## OPPORTUNITIES



## MAJOR PROJECT ELEMENTS

**Goal 1:**

- Education center/programming (4,000 S.F.)
- Orange County farming history (4 acres)

**Goal 2:**

*Sustainable and regenerative practices*

- Fire-resistant landscaping areas (8 acres)

**Goal 3:**

*Create new habitat*

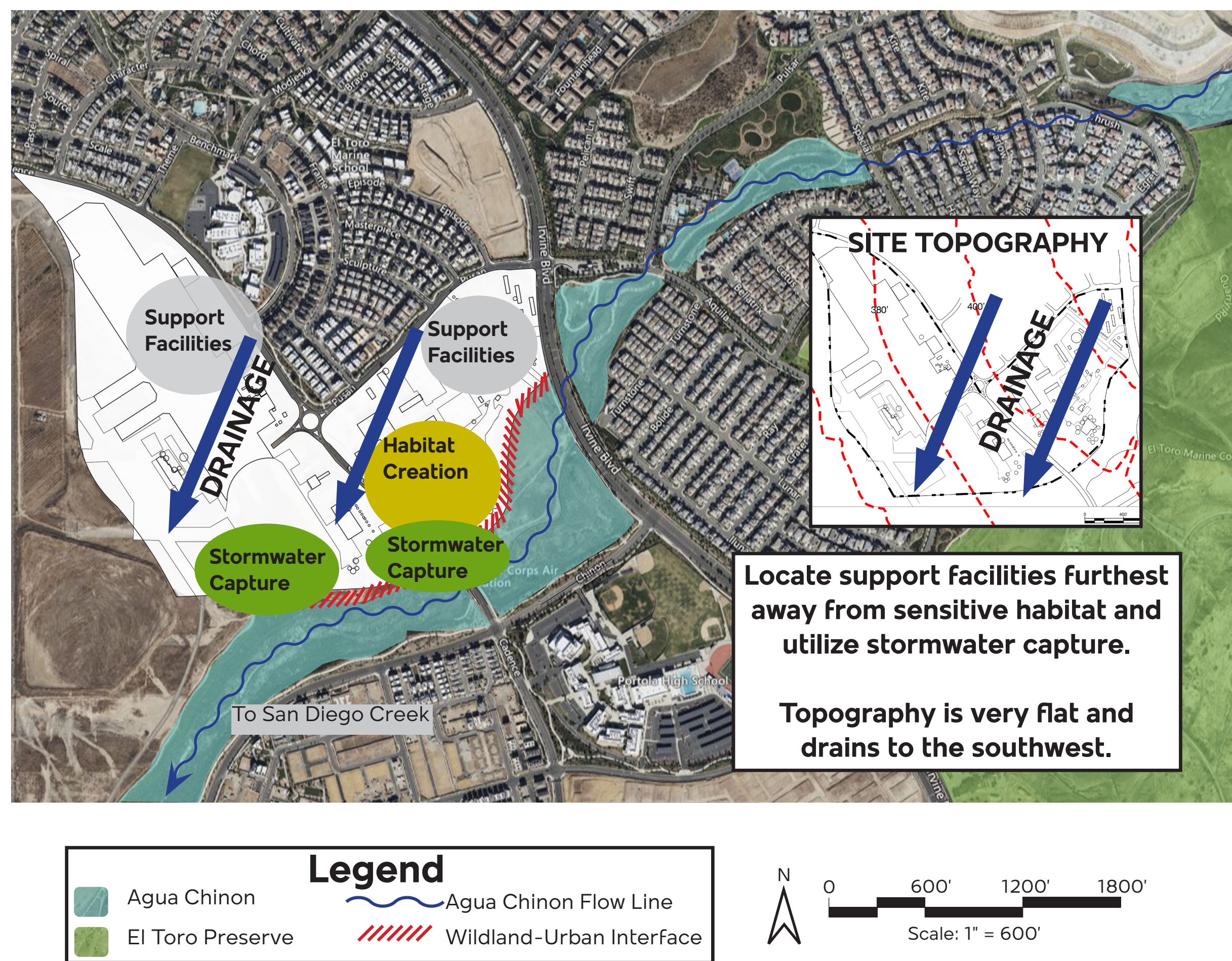
- Natural landscape with trails (40+ acres)
- Native and pollinator habitat (7+ acres)

**Goal 4:**

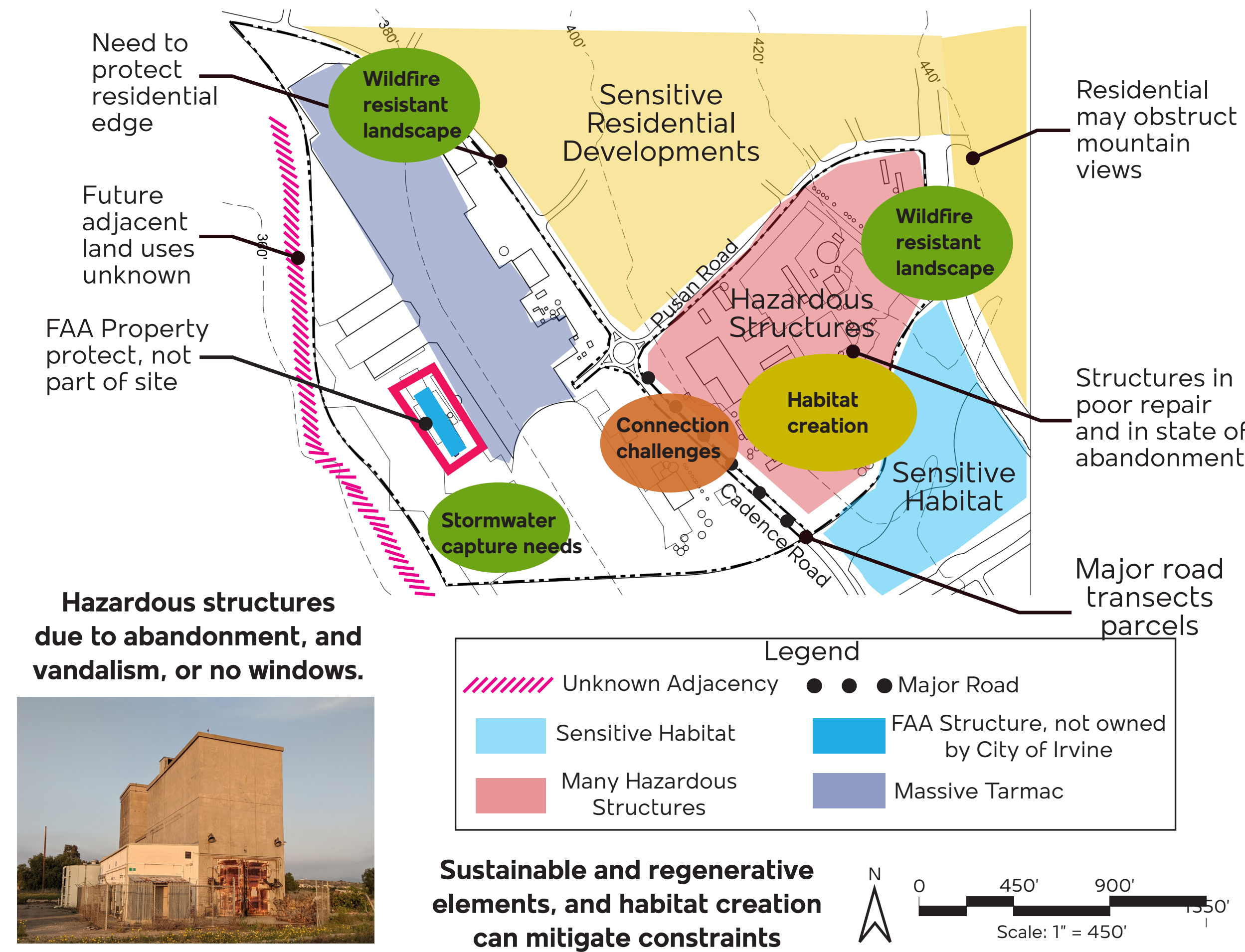
*Attract residents and tourists*

- Children's Garden (2 acres)
- Veteran Garden (2 acres)
- Cultural Gardens (2-4 acres)
- Restaurant/Cafe (10,000 S.F.)

## WILDLAND-URBAN INTERFACE OPPORTUNITIES



## CONSTRAINTS



## DESIGN CONCEPT - MONARCH WINGS

Design concept for Monarch Wings, featuring a Monarch butterfly on a flower and a site plan with wing-like patterns.

[https://ucanr.edu/blogs/entomology//blogfiles/74999\\_original.jpg](https://ucanr.edu/blogs/entomology//blogfiles/74999_original.jpg)

**This concept is inspired from the geometric pattern of a Monarch butterfly wing.**



Photo Credit: All photos E. Fisher unless noted.

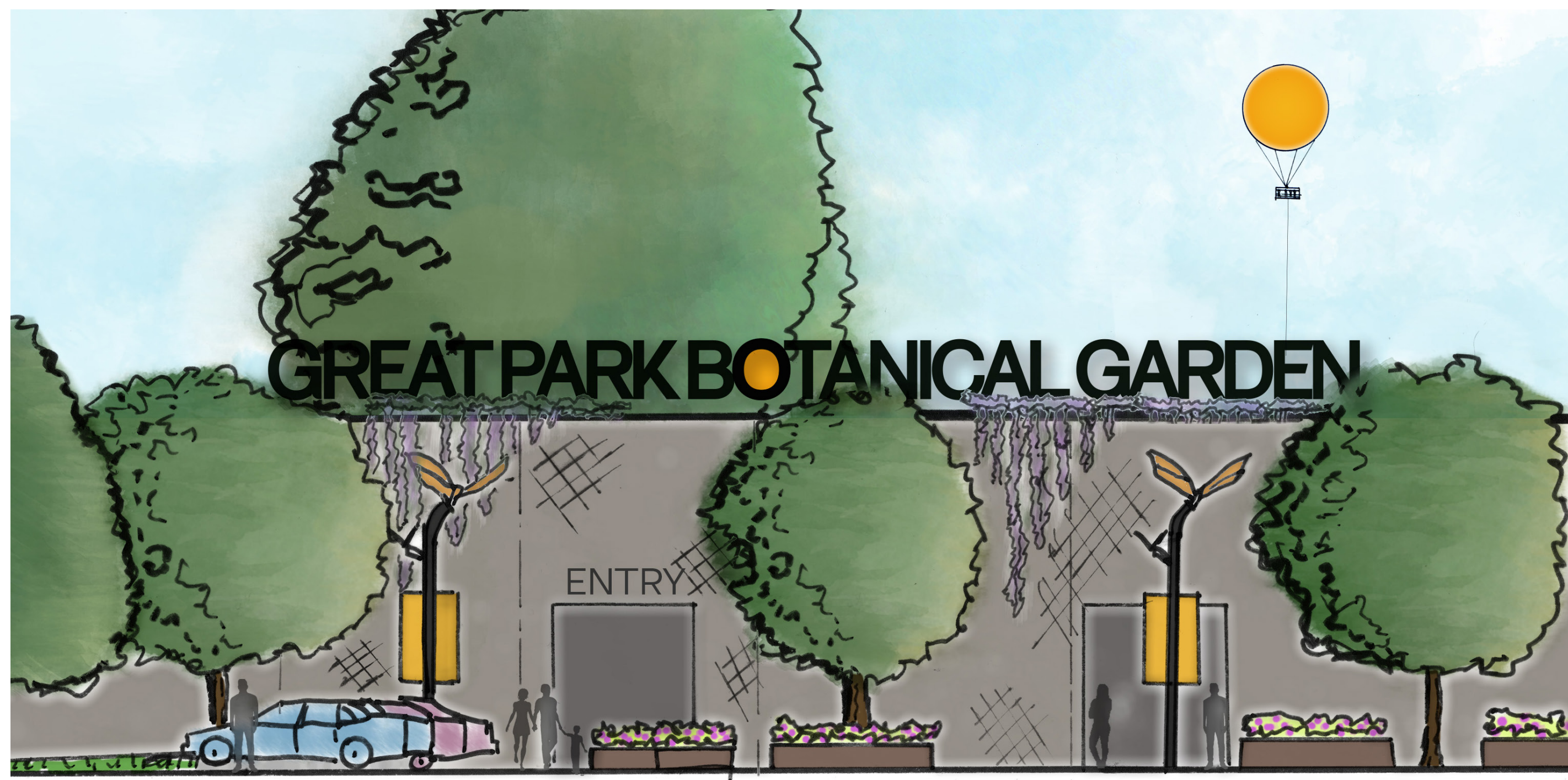


# GREAT PARK BOTANICAL GARDEN MASTER PLAN





# ENLARGEMENTS AND SKETCHES



Entry building elevation



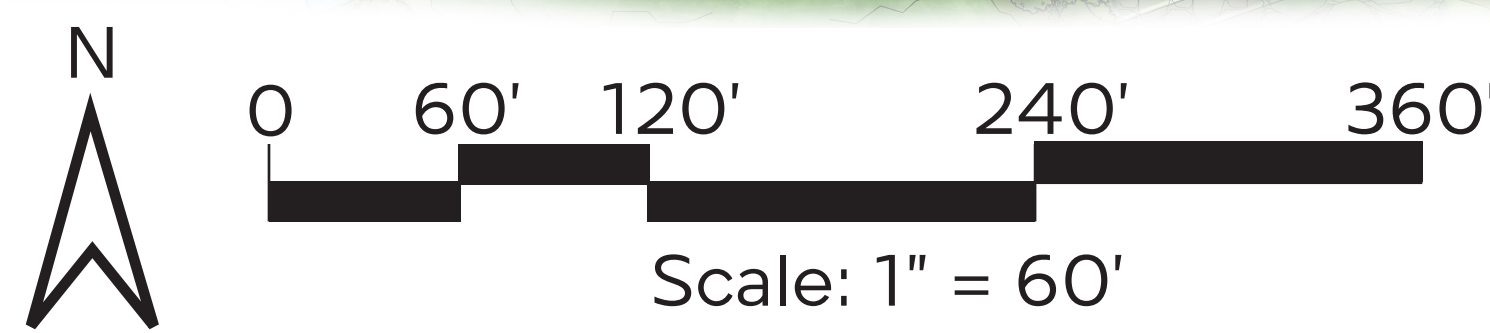
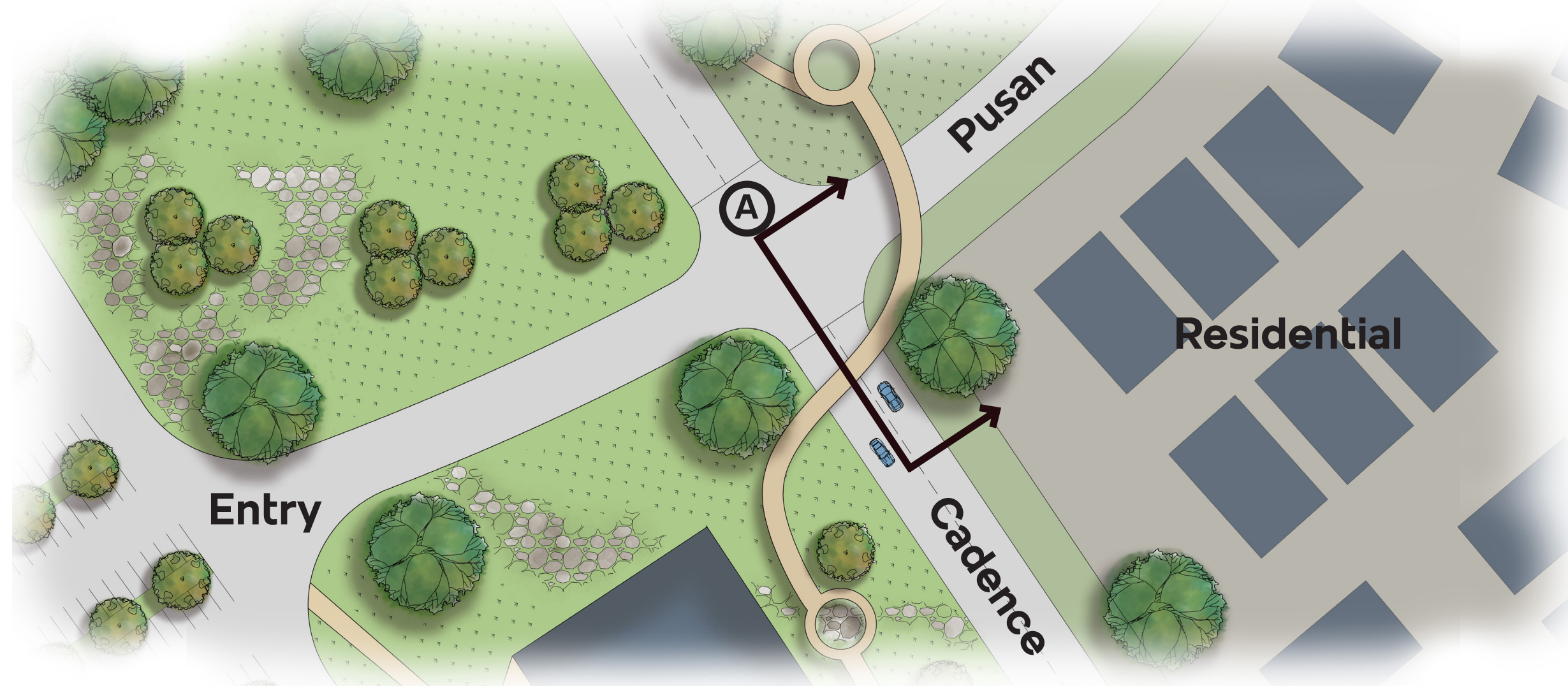
View of elevated path



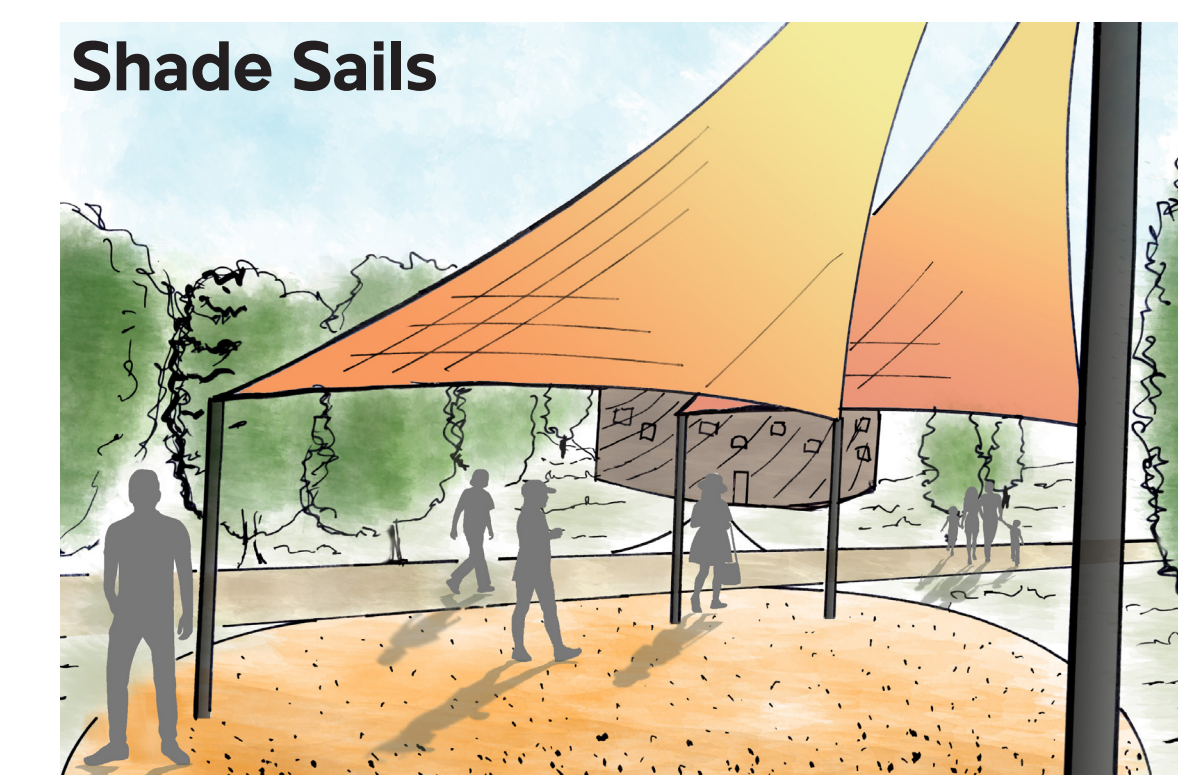
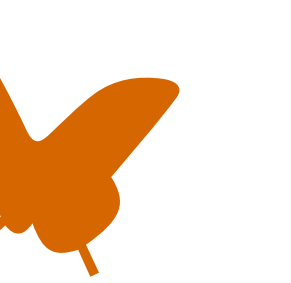
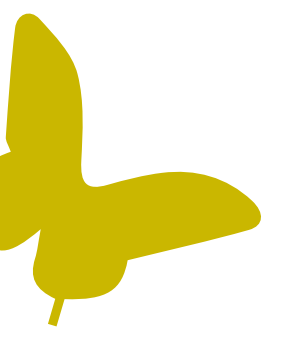
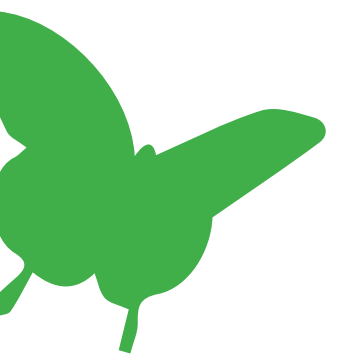
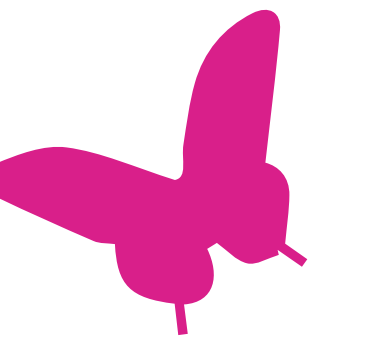
View of primary path in garden



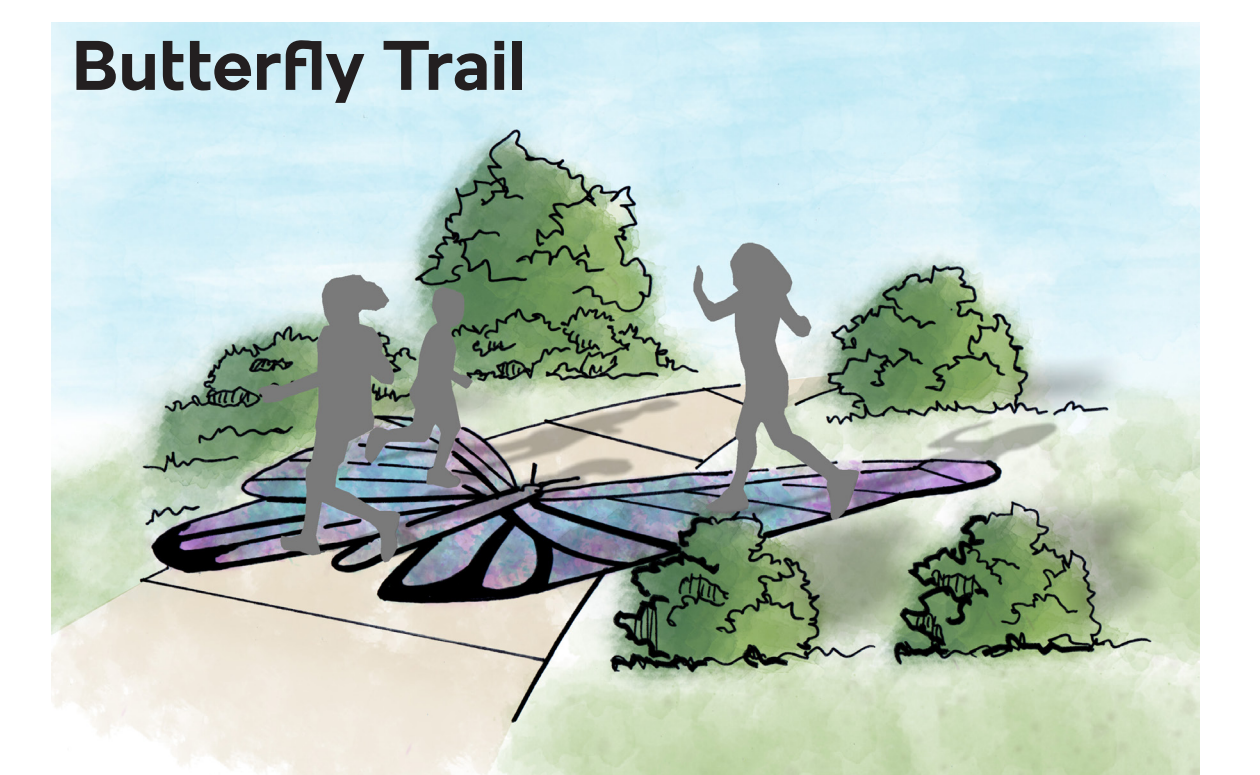
Section Elevation A of pedestrian foot bridge across Pusan and Cadence Roads (above/below)



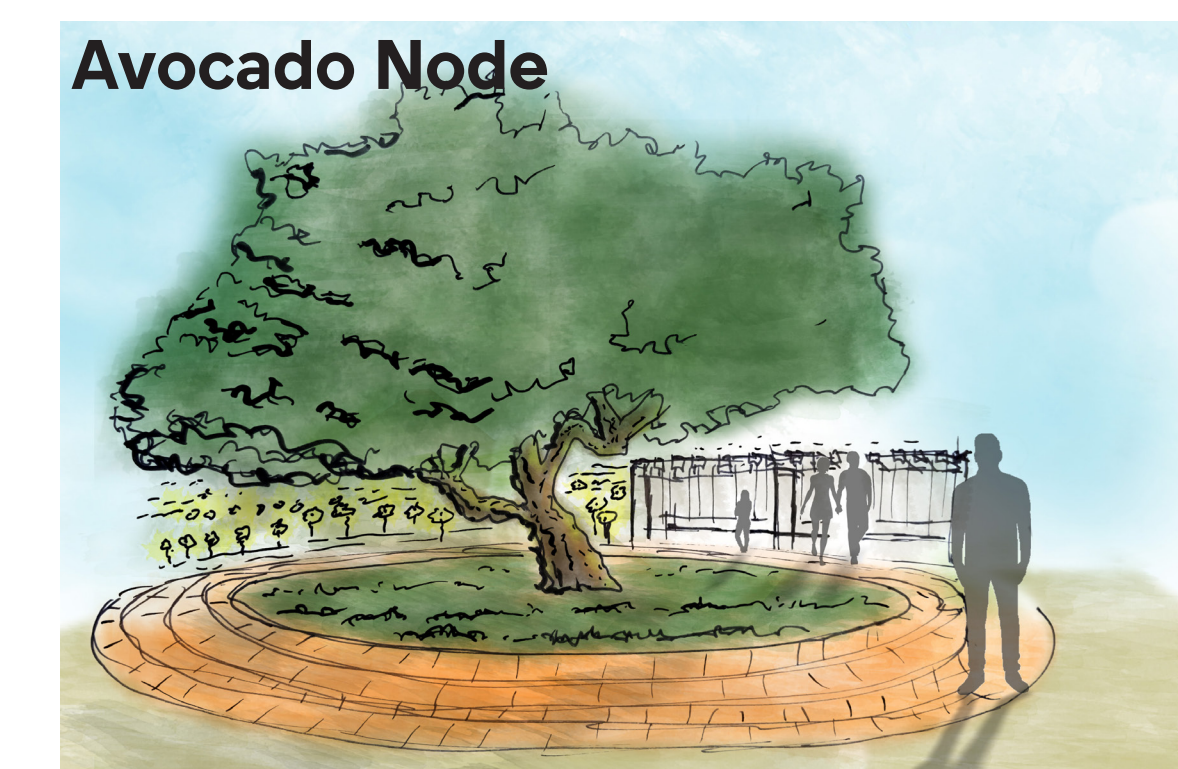
An elegant elevated walkway provides a different vantage point of the garden and a safe crossing over Cadence Road, seamlessly connecting both quadrants of the garden. ▶



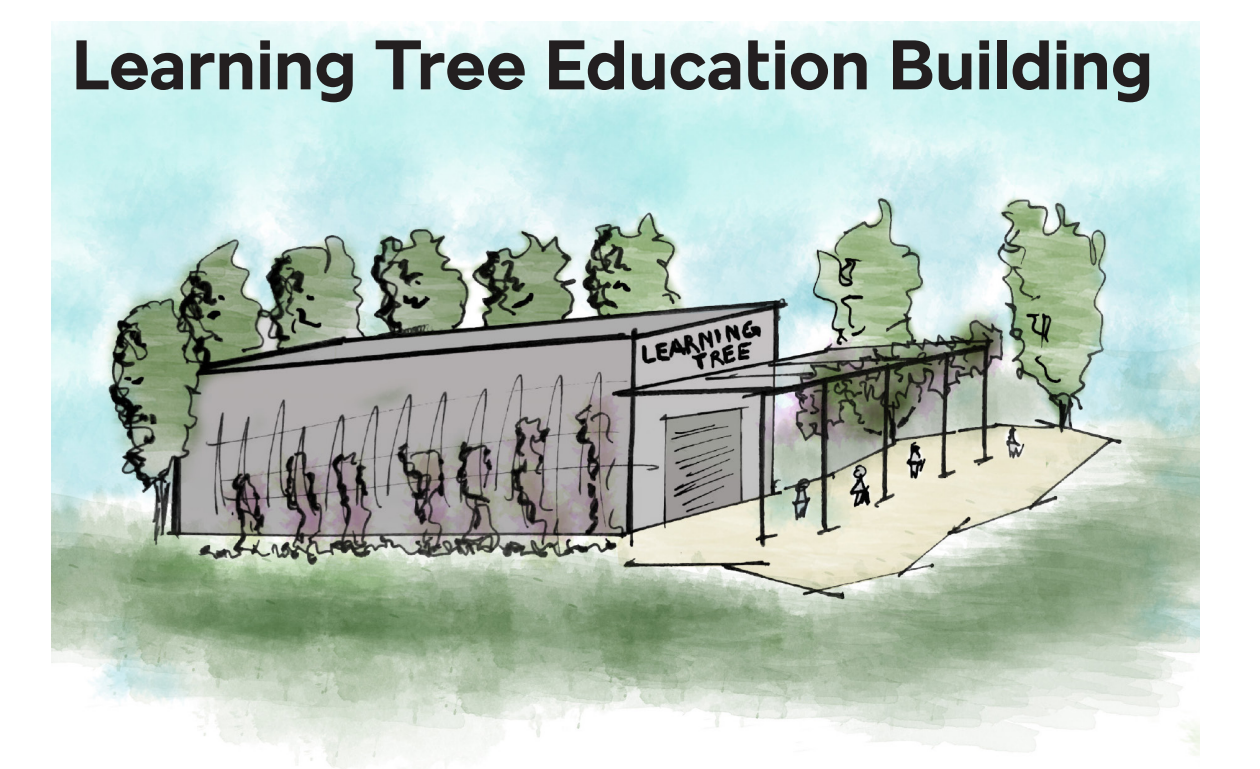
Shade Sails



Butterfly Trail

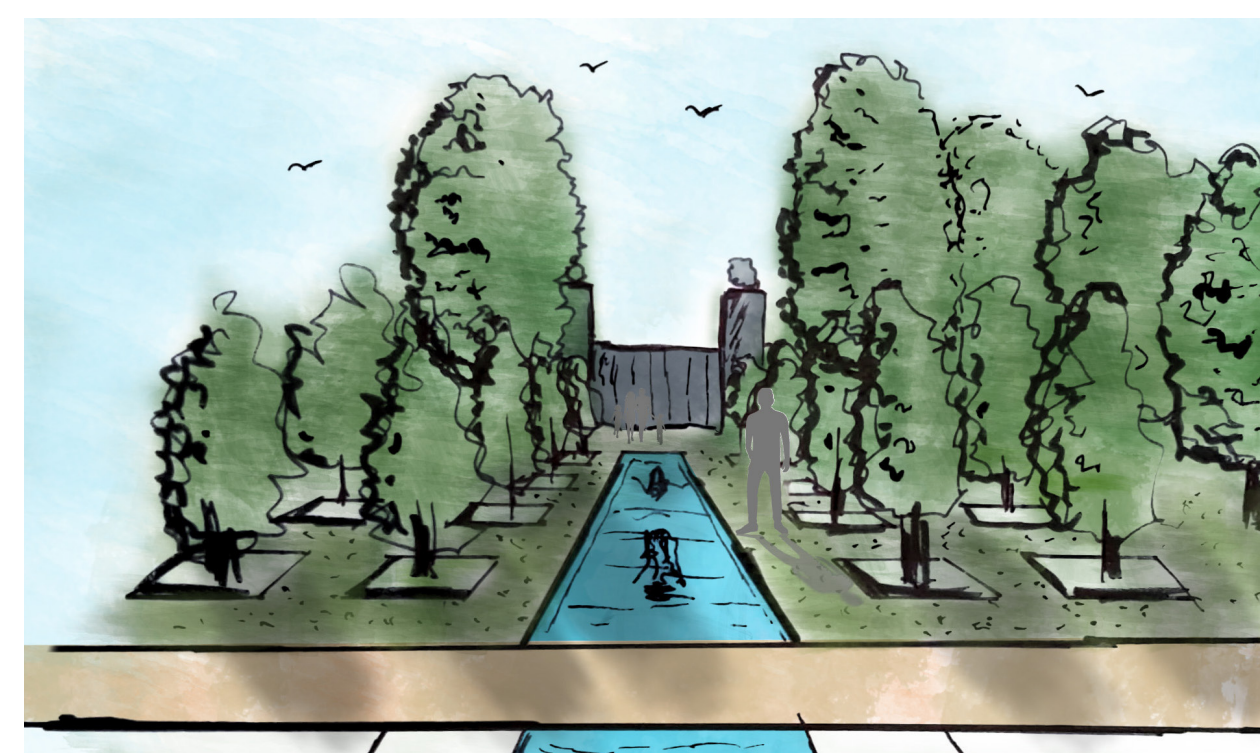


Avocado Node



Learning Tree Education Building

The agriculture zone presents an opportunity to engage visitors in the immersive experience of a flower field or pumpkin patch. Circular areas may highlight avocados and citrus, a nod to the history of the region. Cultural gardens in the southwestern quadrant tell the story of diversity in the City of Irvine. Meso-American agricultural techniques of floating island chinampas are not represented in any Southern Californian garden.



Persian Garden



Enlargements Key Map