

UCLA EXTENSION LANDSCAPE ARCHITECTURE

Landscape Design 7 : Advanced Design Studio

Ristin Wilson

Spring 2022 Professor Patrick Reynolds



Built in 1953 by North American Aviation in Columbus, Oh as serial number 53-1304, this F-86H Sabre now resides as a static display at the March Field Air Museum.

PROJECT STATEMENT

Opportunity arises for redesigning historical reenactments of American vintage war planes.

PROJECT JUSTIFICATION

The impressive March Field Air Museum is home to over 80 war planes and 300,000 artifacts displayed inside the modern museum hangar. The 30-acre grounds are restoring the landscape displaying vintage planes, with event planning for 7,000 enthusiasts at air shows. The viewing grounds displays war craft and memorabilia without the glorification of war. Many events take place small and grand to increase revenue for the museum annual budget. Interactive memorials will be designed for all ages and a new cafe allows for patrons to rest and enjoy the environment. Connective spaces will allow for exhibits to be playful for kids with remembrance for veterans, while honoring patriotic events at air shows, as well as small groups to visit the premise and enjoy the small venues. Environmental restoration of the blue line stream and native plantings to the interior of the site around the museum, display a native plant palette that will thrive in the extreme cold and hot region of the Riverside gardens. The historical precedent of vintage war planes is the motif for all design.

PROJECT GOALS

- Define spaces with cultural memorial to planes with honor for veterans and education for adolescents.
- Order of the new design with museum program elements
- Revenue for the museum and renovation projection
- Appeal to all user abilities and all user age groups
- Define the landscape with honor and places to see

The Boeing B-17 Flying Fortress was the undisputed centerpiece of the U.S. air campaign in Europe during the Second World War. The four-engine heavy bomber carried an impressive 5,000 to 8,000lb bomb load and an extensive defensive armament of up to 13 .50 caliber heavy machine guns. The mushroom cloud walkway around the displayed plane, resembles what this plane prevented in war combat, another atomic bomb.



VICINITY MAP - NTS



MARCH FIELD AIR MUSEUM

MARCH FIELD AIR MUSEUM

Site Address : 22550 Van Buren Blvd, Riverside, Ca 92518

Opened February 20, 1981

The adjacent air flight runway is March Air Reserve Base is still active 2022 with strategic air command and home to 2,075 acres of land.

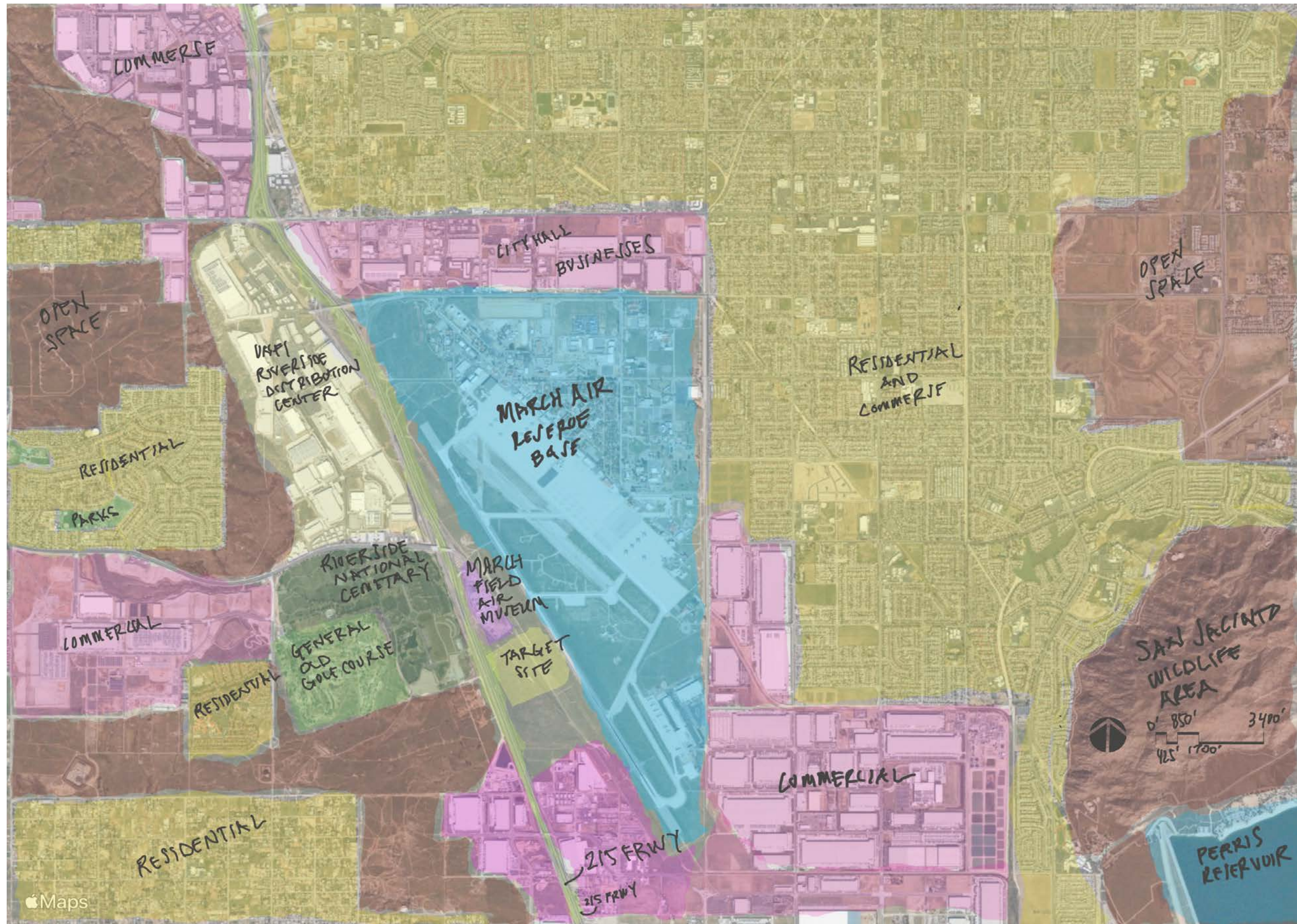
March Field Air Museum advancing 100 years of aviation with over 80 historic aircraft and more than 300,000 individual artifacts on 30 acres of land.

Population of Riverside is 336,478 with 81 square miles.

Elevation is 1526



CALIFORNIA COUNTIES - NTS



LOCAL CONTEXT MAP - SCALE AS NOTED

MARCH AIR FORCE BASE TIMELINE

1918



WWI: 1918 Served as military primary flight training
Curtiss JN-4

1921



Inter-War-Years
12-13-1921 MAFB made permanent military establishment, awarded \$64K by government

1941



WWII Attack on Pearl Harbor
Dec 1941 March trained troops for the Pacific. March held Bob Hopes first USO show 5-6-41

1948



ConAC Continental Air Command 1948 brought to March to strengthen air defense on N. America continent. The F-86As arrived 1949 with 79 of 83 planes

1950



Korean War By October 21, 1950 57 missions, 335 sorties and dropped 6,500 tons of bombs

1952



Cold War In 1952 took delivery of Boeing KC-97 tankers, adding aerial refueling to its mission. Flew jet powered Boeing B-47 for the longest non stop mass flight in history.

1972



Vietnam War 1967-1975 support operations with its KC-135 resources on loan to 1972, then a few tankers returned to wing control

1996



Air Force Reserve effective date 3-31-1996 and named March Air Reserve Base 4-1-96 after serving 78 years of active military duty. C-17 Globemaster III stationed at March

MARCH FIELD AIR MUSEUM AMENITIES + SITE INVENTORY

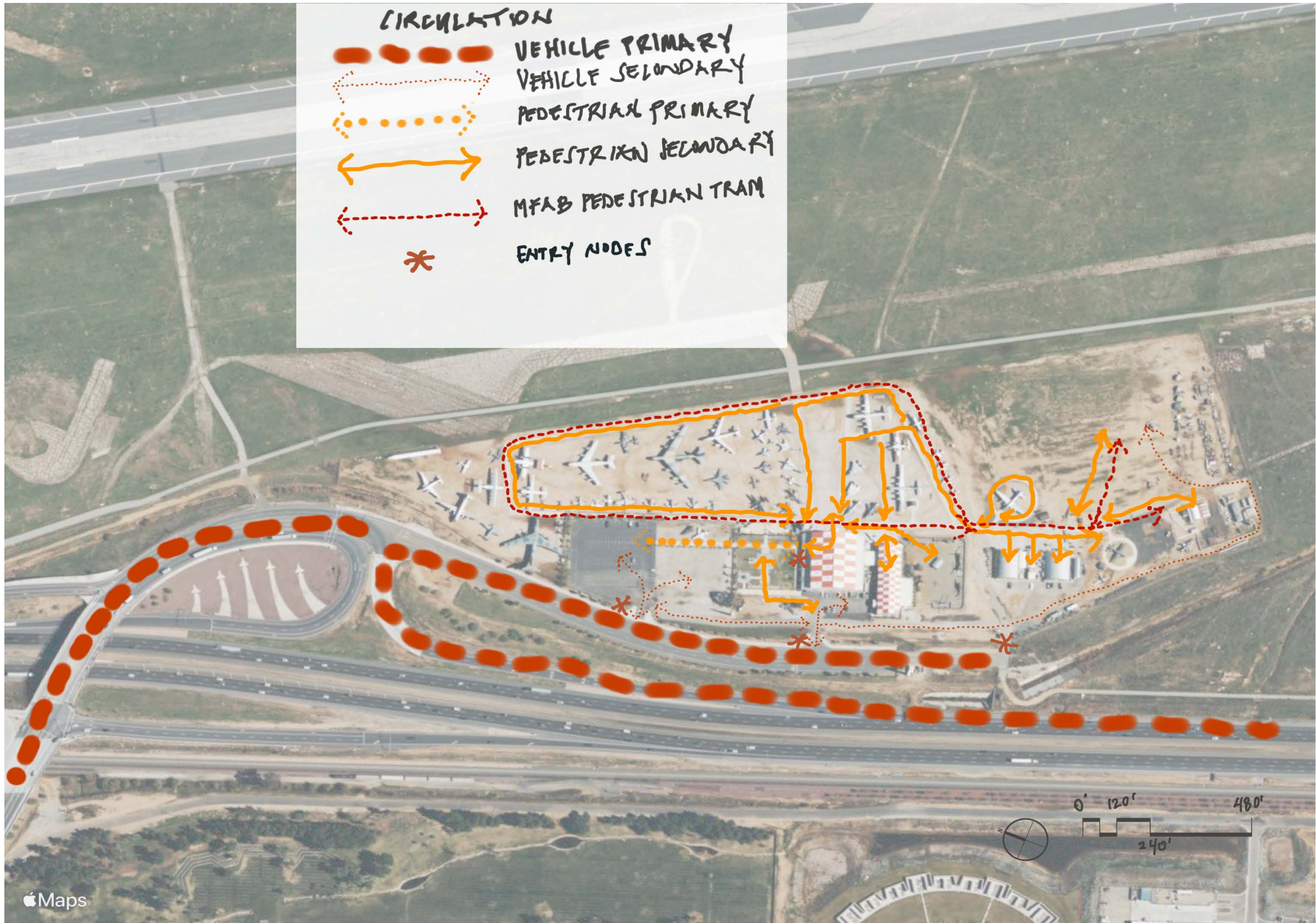
- 1. PARKING LOT
- 2. OVER FLOW PARKING
- 3. OVER FLOW EVENT PLANNING
- 4. HANDICAP / EMPLOYEE PARKING
- 5. MAIN ENTRANCE WALKWAY
- 6. HERITAGE COURTYARD
- 7. WATER FOUNTAIN
- 8. JEWELRY FENCING
- 9. FREEDOM SHRINE
- 10. BLUE LINE STREAM

- 11. PALM TREES
- 12. EUCALYPTUS
- 13. FLIGHT MUSEUM 55'H
- 14. EVENT HANGER
- 15. F32 RESTORATION HANGAR
- 16. RADIO ROOM
- 17. RESTORATION HANGER
- 18. VIETNAM FIRE BASE
- 19. PACIFIC ISLANDS
- 20. KOREAN PLANES

- 21. MIDDLE EASTERN FIRE BASE
- 22. AIR TRANSMISSION TOWER
- 23. RADAR AIR CONTROL TOWER
- 24. AIR RAID SIREN
- 25. CONCORDE ALL AMERICAN
- 26. REGULATED FLIGHT LINE
- 27. WAR MEMORIALS
- 28. BONE YARD



Apple Maps



CIRCULATION

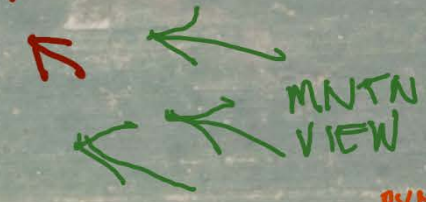
- VEHICLE PRIMARY
- VEHICLE SECONDARY
- PEDESTRIAN PRIMARY
- PEDESTRIAN SECONDARY
- PEDESTRIAN SECONDARY
- MFAB PEDESTRIAN TRAM
- ENTRY NODES

Apple Maps

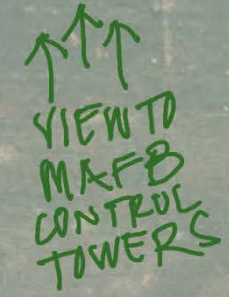
MARCH FIELD AIR MUSEUM

SITE ANALYSIS

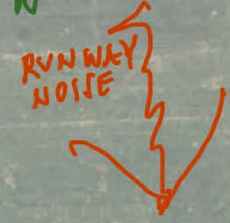
MT. SAN ANTONIO



JAN BERNADINO NATIONAL FOREST



SANTA ANNA WINDS
UP TO 77 MPH WINDS 2-1-22
TYPICALLY WARM TO HOT BREEZES
WIND VARIES 50-100 MPH



SUNSET ZONE 18
INTERIOR CLIMATES
WINTER LONS 22-57°F
ANNUAL HIGHS 75-94°F

Summer Solstice

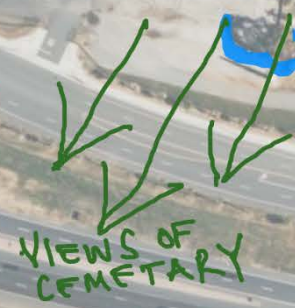
Autumn Equinox

Winter Solstice

PREVAILING WINDS
FROM WEST FOR 8 MONTHS
FEB 19 TO NOV 8
PEAK OF 50% ON MAY 22



VIEWS OF CEMETARY



INLET SPADE ON SITE

SAN JACINTO MNTNS



Apple Maps



THE HERITAGE COURTYARD

Located by the main entrance of the March Field Air Museum is home to the Distinguished Flying Cross National Memorial, the West Coast War Dog Memorial, the 15th Air Force Wall, the Freedom Wall, and the P-38 Lightning Memorial. Newly added in 2018 is a Rosie the Riveter Memorial Rose Garden, part of a national network of these gardens.



MEMORIAL ROSE GARDEN



2. FREEDOM SHRINE



3. ENTRY TO MUSEUM



4. 15TH AIR FORCE WAR MEMORIAL AND HAP ARNOLD BUST SCULPTURE



FLYING CROSS MEMORIAL



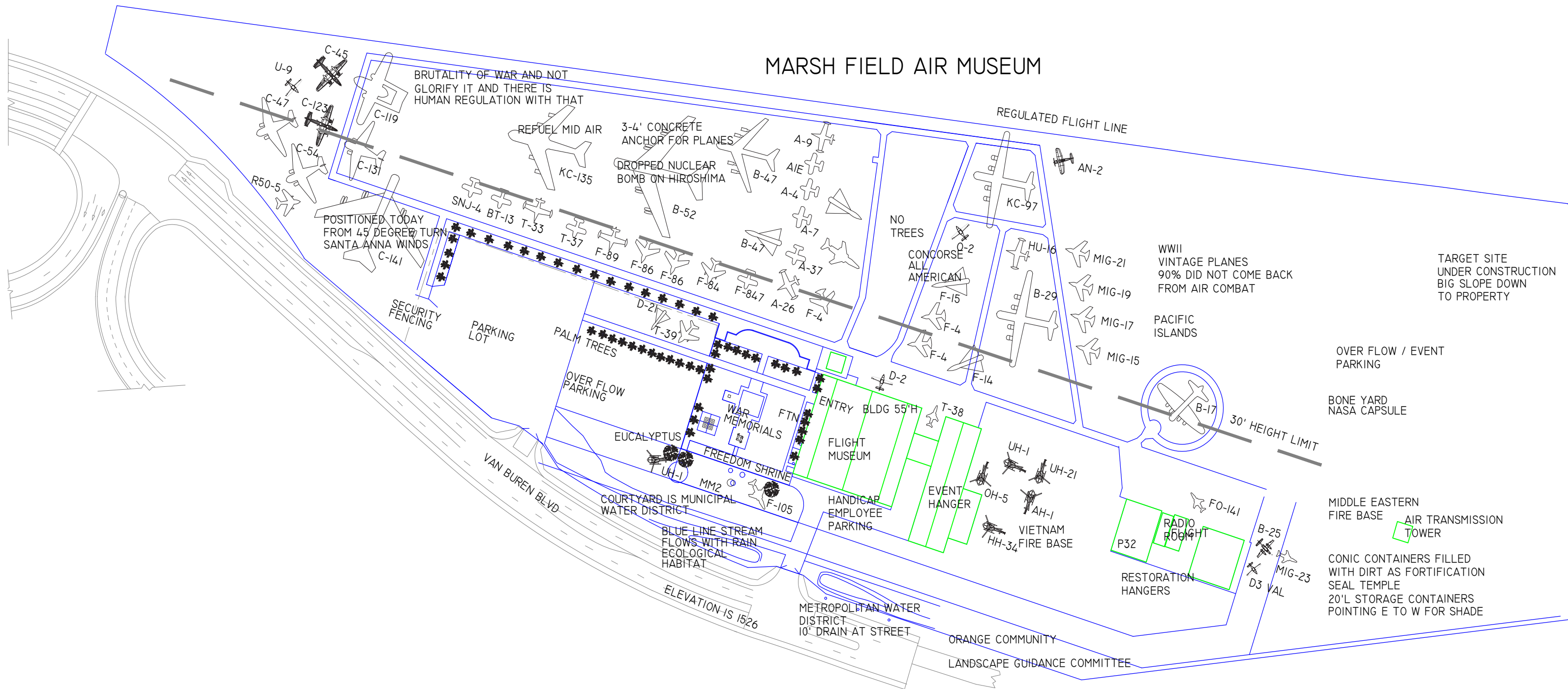
6. P-38 LIGHTNING MEMORIAL



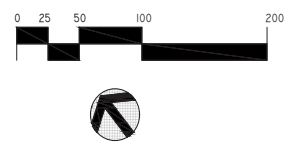
7. WEST COAST WAR DOG MEMORIAL

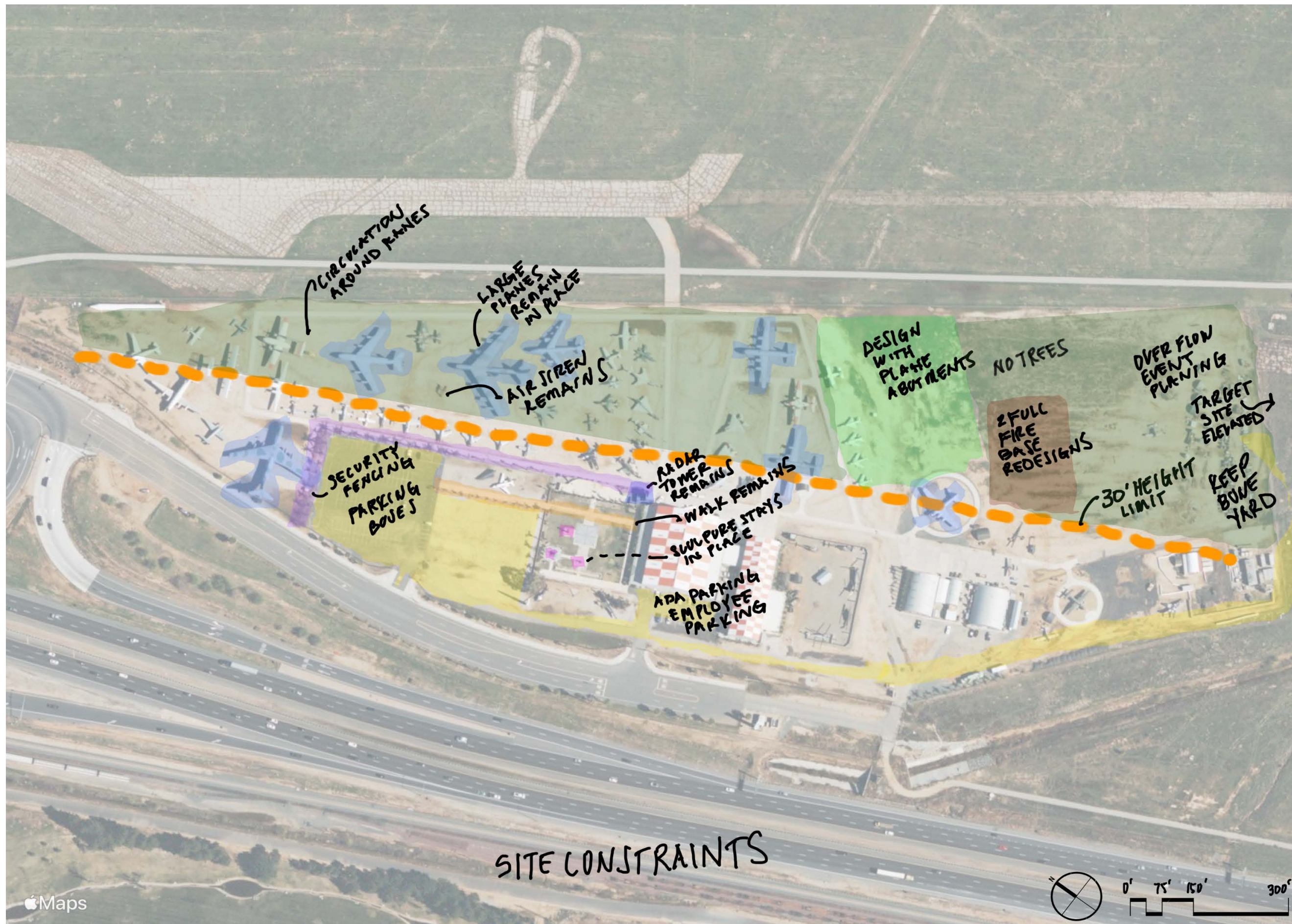


KEY MAP



VINTAGE PLANES REDESIGN MARCH FIELD AIR MUSEUM





SITE CONSTRAINTS

MARCH FIELD AIR MUSEUM



CASE STUDY 1 : CASTLE AIR MUSEUM

Site Address : 5050 Santa Fe Dr, Atwater, Ca 95301

Opened June 1981 with 12 aircraft, sits on 25 acres and former United States Strategic Air Force Command Base that closed in 1995 after the cold war.

Mission statement, preserving military aviation heritage for future generations.

Home to aviation history and 73 vintage war planes.

Charity events of golf tournaments and open cockpit day.

Outdoor aircraft displays and indoor artifact museum.

170 volunteers and 30 years of restoring aircraft.



CASE STUDY 2 : EDWARDS AIR FORCE BASE

A. AIR FORCE FLIGHT TEST MUSEUM - Opened in 2000

Site Address : 405 Rosamond Blvd, Edwards AFB, Ca 93524

AFFTM has tested every aircraft in the Army Air Force and Air Force inventory since WWII.

B. WEST GATE CENTRUY CIRCLE

Site Address : VC25 + FM Edwards, Edwards AFB, Ca 93524

WGCC has 7 planes on display and an AFFTC control tower 18'Hx28'W. Tower was used until 1988.

EAFB is 301,000 Acres, Second Larges Air Force Base in US, Longest runway in the country.

Home to Air Force Test Center, Air Force Test Pilot School, NASA's Armstrong Flight Research and Air Force Material Command.

EAFB has 2,545 people living on the base.

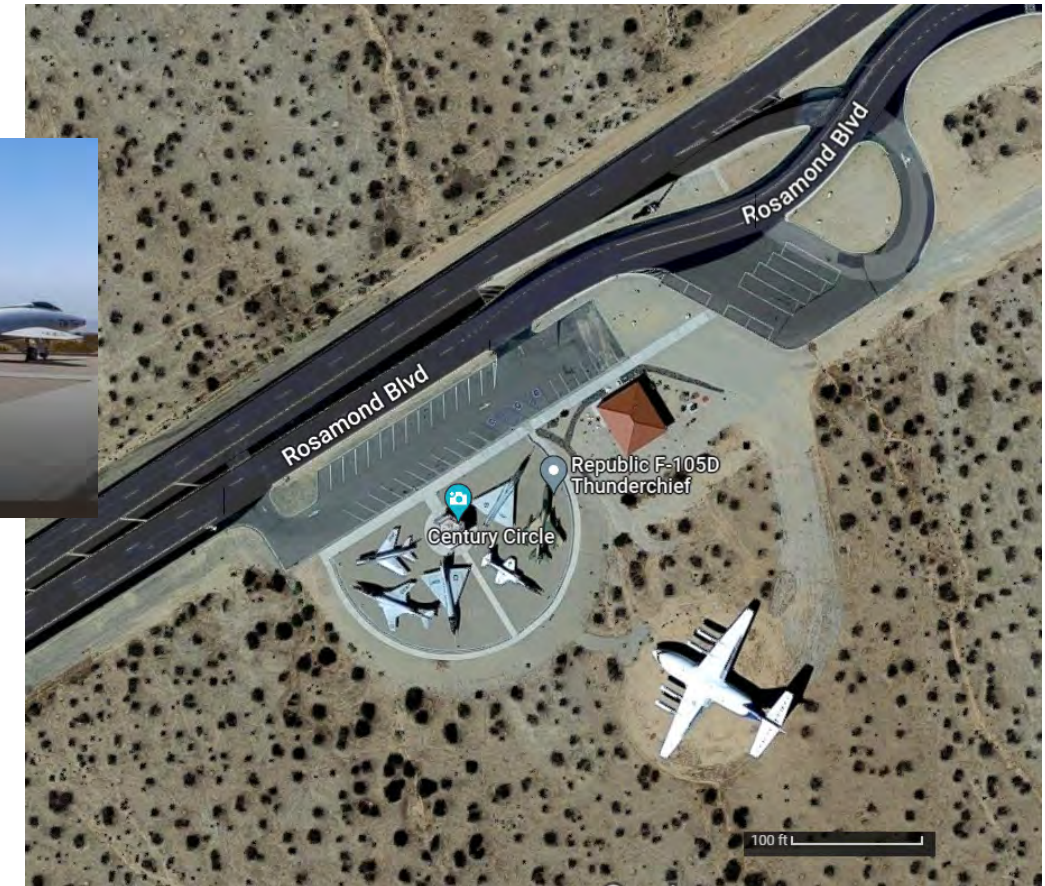
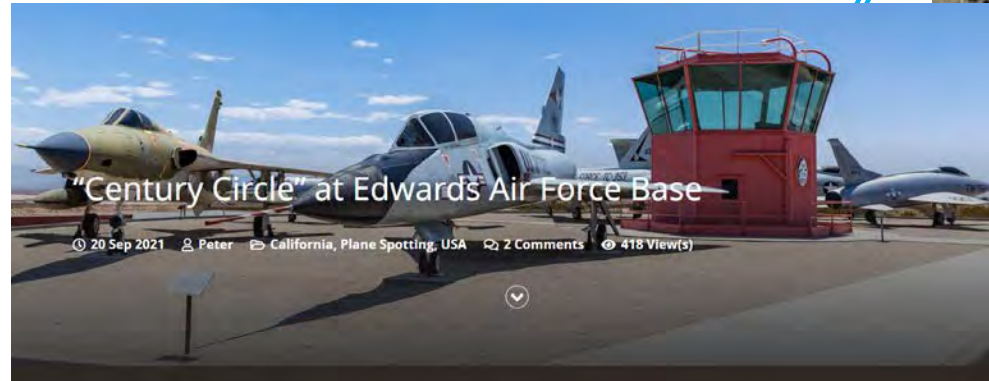


AIR FORCE FLIGHT TEST MUSEUM
405 ROSAMOND BLVD, EDWARDS AFB, CA 93524

B



EDWARDS AFB, CA 93524



CASE STUDY 3 : VIETNAM VETERANS MEMORIAL ON THE NATIONAL MALL

Site Address : 2 Lincoln Memorial Cir NW, Washington, DC 20037

The “wall” is actually made up of two identical walls that each stretch 246 feet and 9 inches, containing more than 58,000 names. The names are listed in chronological order based on the date of casualty, and within each day, names are shown in alphabetical order.

By 1979 a memorial fund was formed, and in 1980 land in Constitution Gardens was authorized for the memorial placement. A design competition was announced, and 21-year-old Yale architecture student Maya Lin earned the unanimous selection.

The names of men extend 1959 to May 15, 1975

The memorial wall dedication on November 11, 1982, was accompanied by a 56-hour reading at Washington National Cathedral of all the engraved names of the dead.

The Vietnam National US Memorial in Washington DC is in Constitution Gardens, adjacent to the National Mall and northeast of the Lincoln Memorial. Memorial is maintained by National Park Service with 3 million visitors each year.

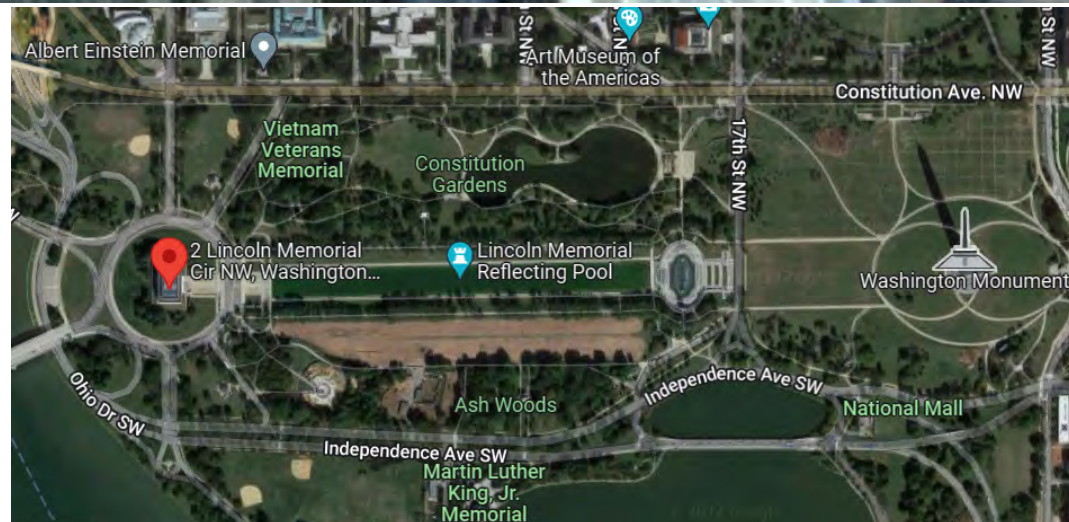
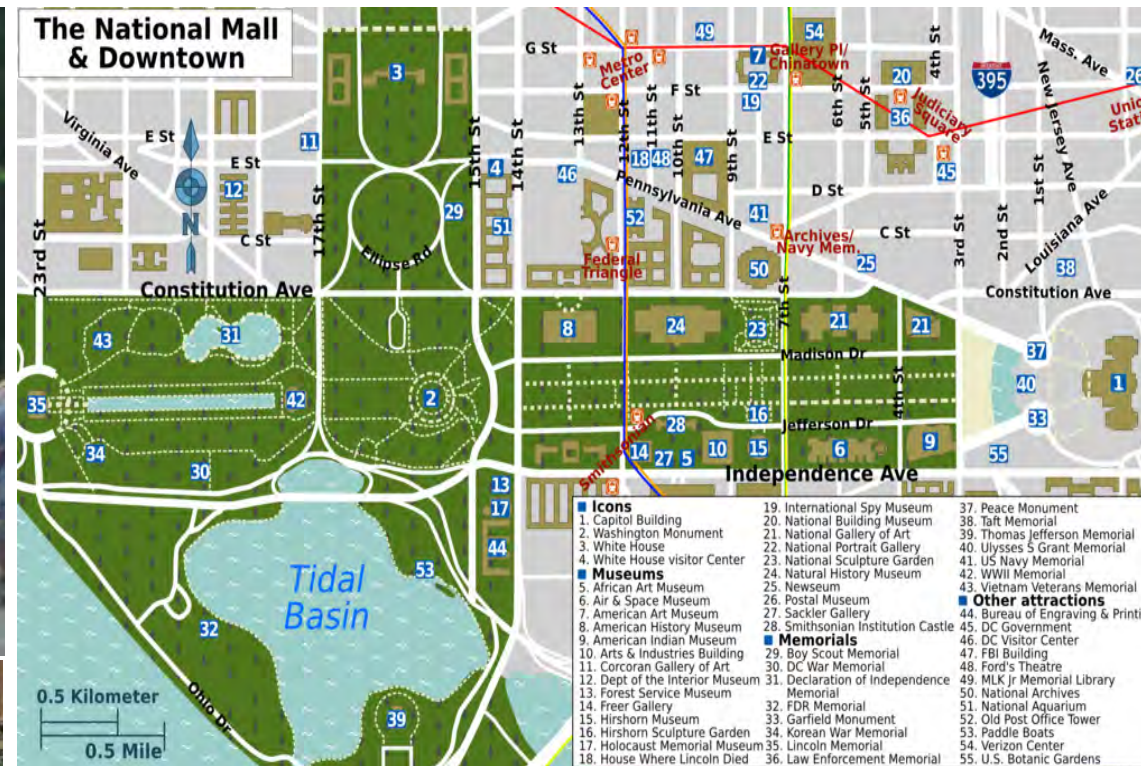
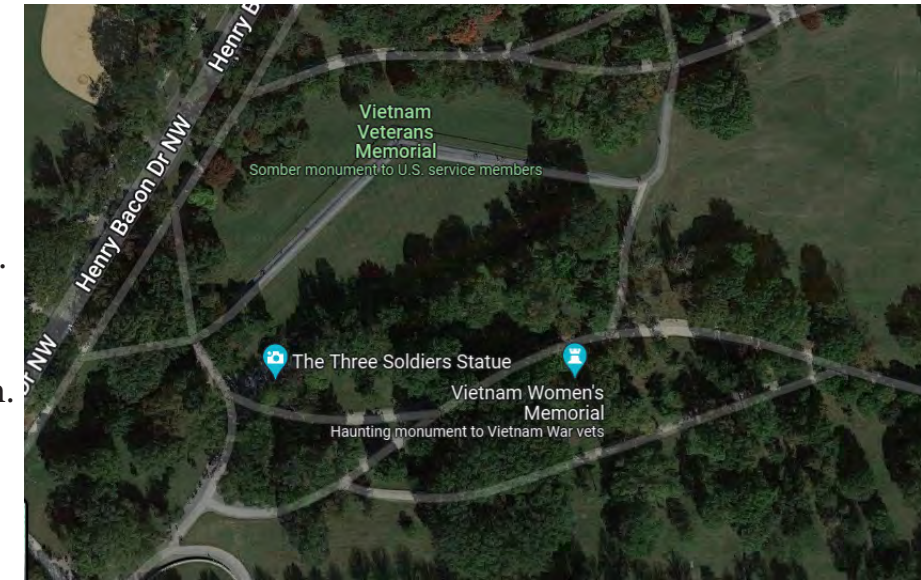
Constitution Gardens is 50 acres with reflecting ponds designed by Dan Kiley as a picturesque restful park.

The National Mall is 309 acres of landscaped park with Lincoln Memorial to the west and the US Capitol grounds to the east. In US National Park System.

The idea for the Mall came from L’Enfant, a French engineer commissioned by President Washington in 1791 to develop a plan for the country’s capitol.

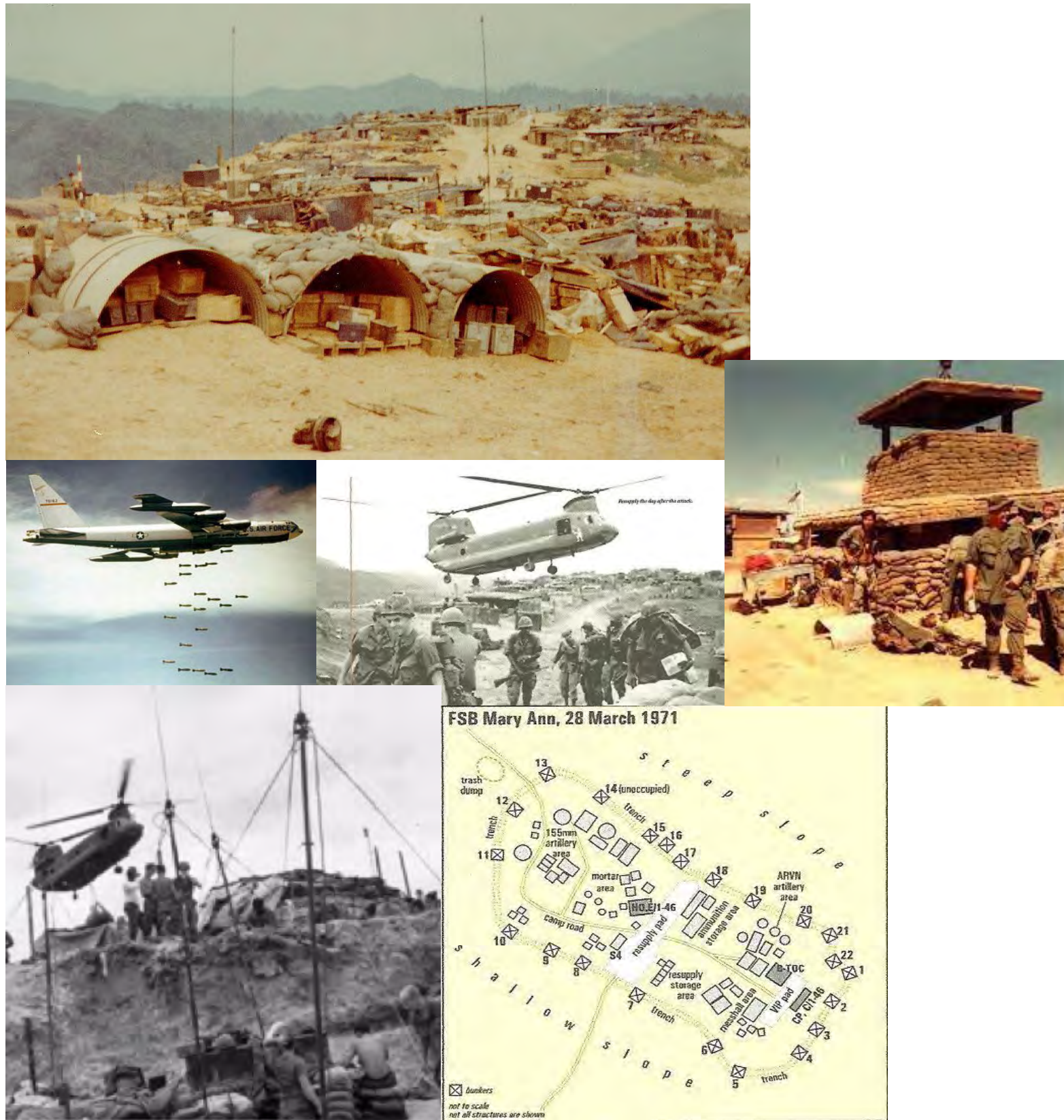
The Lincoln Memorial is a US national memorial built to honor the 16th president of the United States, Abraham Lincoln.

The memorial’s architect was Henry Bacon. The building is in the form of a Greek Doric temple and Lincoln statue was carved by the Piccirilli brothers.

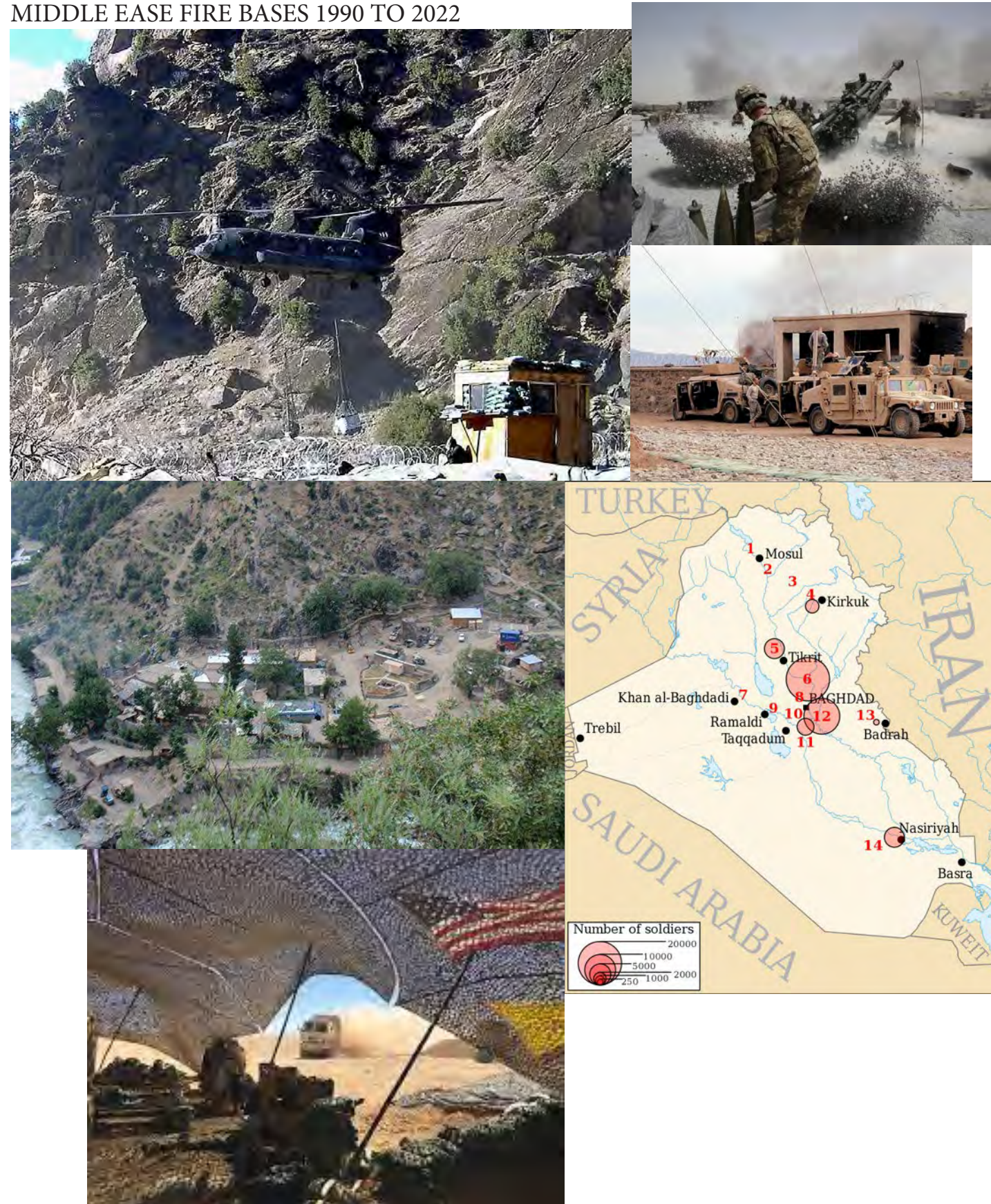


FIRE BASE INSPIRATION - EXISTING ON SITE

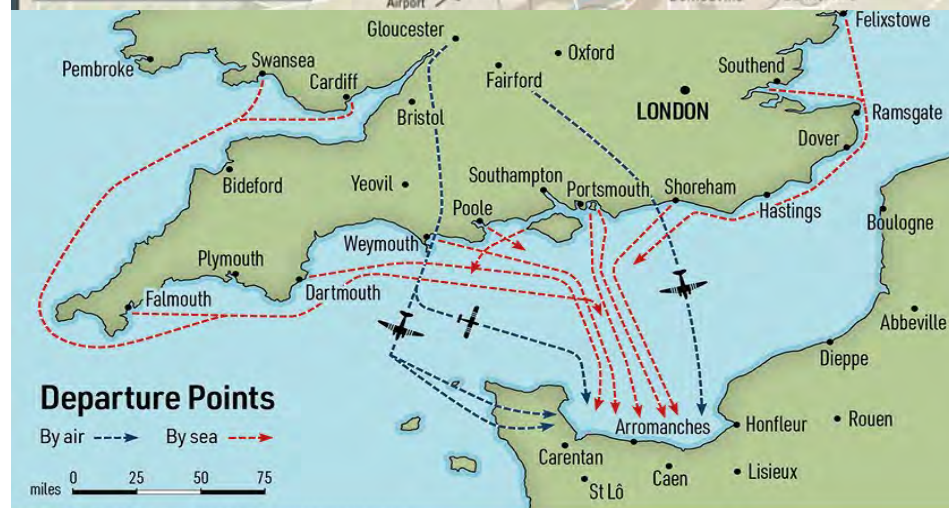
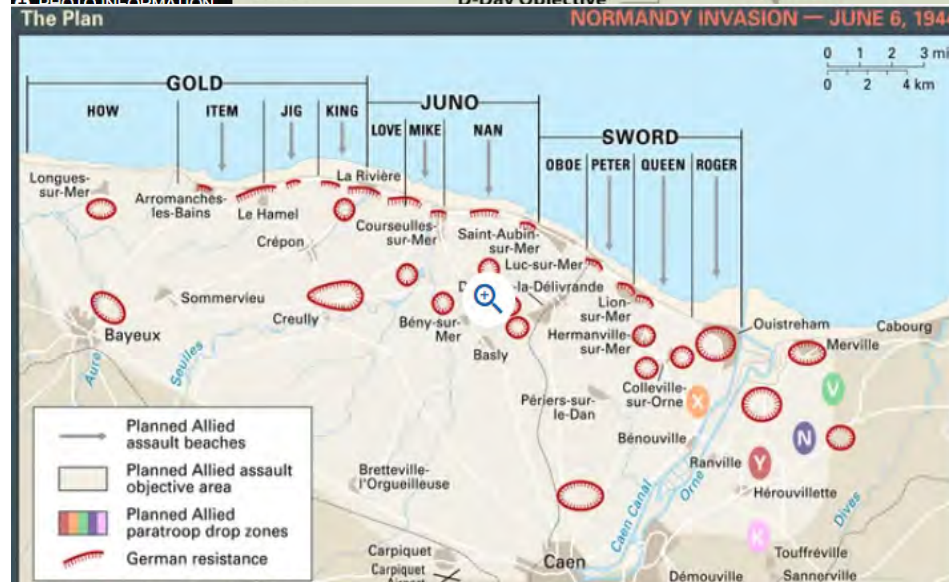
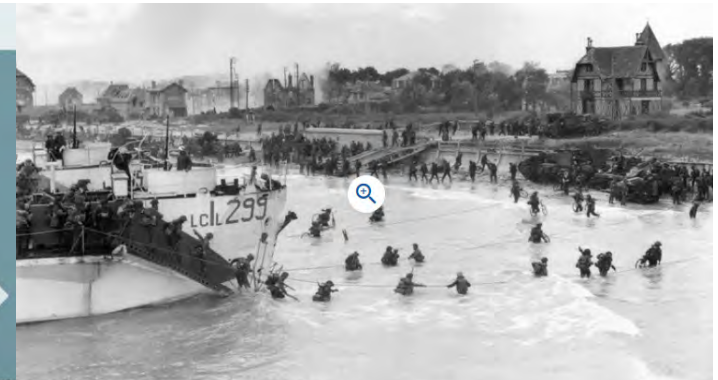
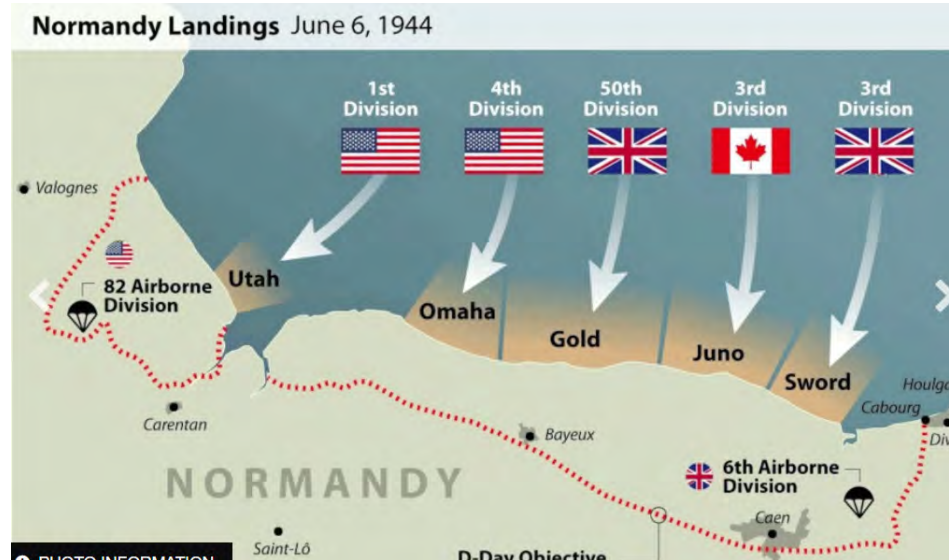
VIETNAM FIRE BASES 1955 TO 1975



MIDDLE EAST FIRE BASES 1990 TO 2022



FIRE BASE INSPIRATION - NEW ON SITE

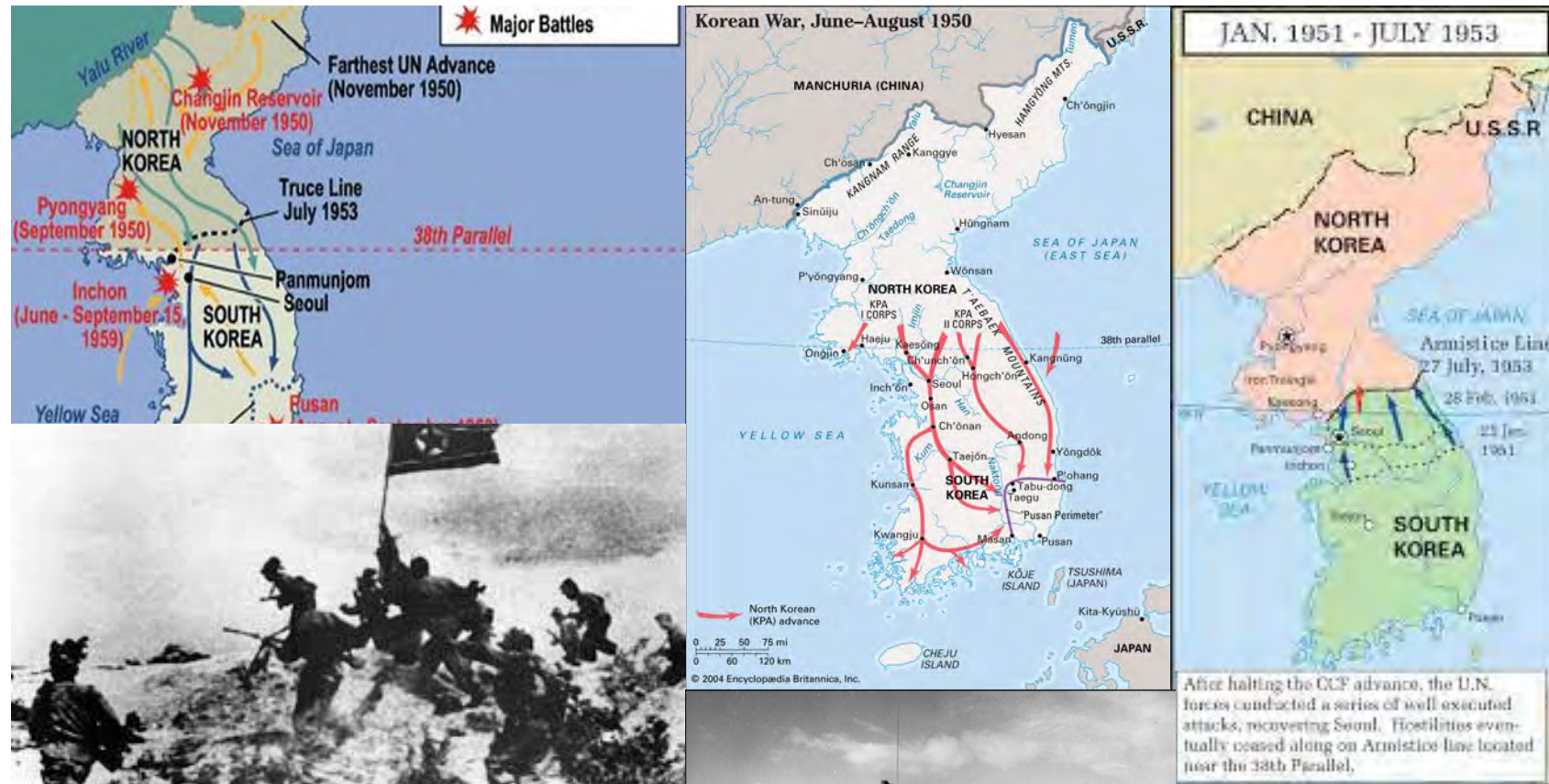


The D-Day operation of June 6, 1944 brought together the land, air and sea forces of the allied armies in what became known as the largest invasion force in human history.

During World War II (1939-1945), the Battle of Normandy, which lasted from June 1944 to August 1944, resulted in the Allied liberation of Western Europe from Nazi Germany's control.

The invasion would be supported by more than 13,000 fighter, bomber, and transport aircraft, against which the Luftwaffe (the German air force) was able to deploy fewer than 400 on D-Day. Between April 1 and June 5, 1944, the British and American strategic air forces deployed 11,000 aircraft, flew 200,000 sorties, and dropped 195,000 tons of bombs on French rail centres and road networks as well as German airfields, radar installations, military bases, and coastal artillery batteries. Two thousand Allied aircraft were lost in these preliminaries, but the air campaign succeeded in breaking all the bridges across the Seine and Loire rivers and thus isolating the invasion area from the rest of France. The Luftwaffe staff was forced to concede that "the outstanding factor both before and during the invasion was the overwhelming air superiority of the enemy."

FIRE BASE INSPIRATION - NEW ON SITE



The Korean War was fought between North Korea and South Korea from 1950 to 1953. The war began on 25 June 1950 when North Korea invaded South Korea.

Korean War, conflict between the Democratic People's Republic of Korea (North Korea) and the Republic of Korea (South Korea) in which at least 2.5 million persons lost their lives. The war reached international proportions in June 1950 when North Korea, supplied and advised by the Soviet Union, invaded the South. The United Nations, with the United States as the principal participant, joined the war on the side of the South Koreans, and the People's Republic of China came to North Korea's aid. After more than a million combat casualties had been suffered on both sides, the fighting ended in July 1953 with Korea still divided into two hostile states. Negotiations in 1954 produced no further agreement, and the front line has been accepted ever since as the de facto boundary between North and South Korea.

It was the first time U.S. jet aircraft entered into battle. Air Force F-86 Sabre jets took control of the skies, [citation needed] as American fighter pilots bested [citation needed] Soviet-built MiG-15 fighters in combat against aircraft, Soviet tactics, and, on some occasions, Soviet pilots [1] of the Soviet 64th Fighter Aviation Corps. World War II-era prop-driven P-51D Mustangs were pressed into the ground-air support role, and large formations of B-29 Superfortresses flew for the last time on strategic bombardment missions. The Korean War also saw the first large-scale use of rotary-wing helicopters.

- Air Force Aircraft of the Korean War
- F-51 Mustang. North American. ...
- F-82 Twin Mustang. North American. ...
- F-86 Sabre. North American. ...
- Bomber. B-26 Invader. ...
- B-29 Superfortress. Boeing. ...
- C-46 Commando. Curtiss. ...
- C-54 Skymaster. Douglas. ...
- AT-6 Texan. North American.



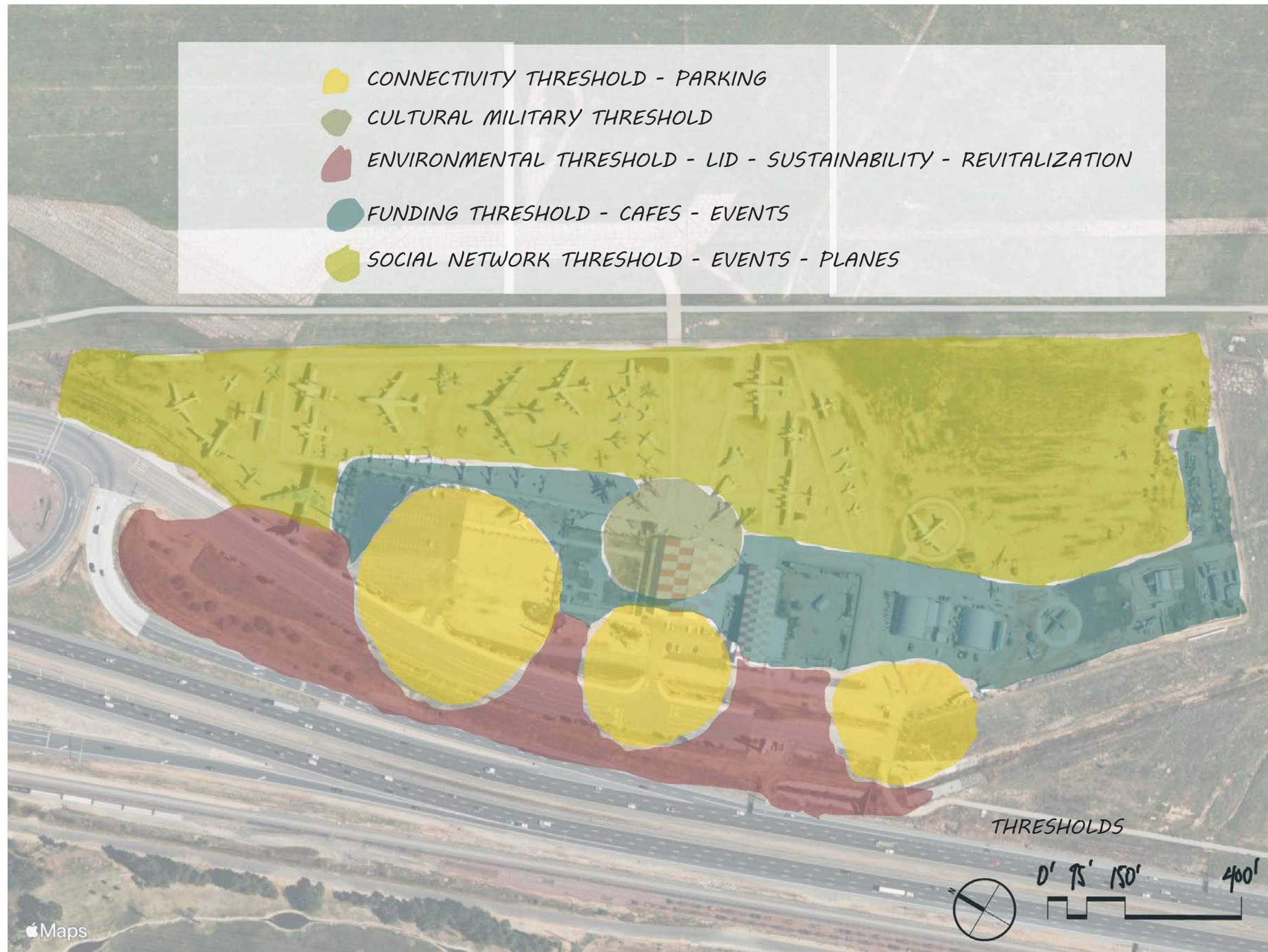
MARCH FIELD AIR MUSEUM REDSIGN PROGRAM

FRONT OF MUSEUM :

ADA PARKING / EMPLOYEE PARKING
SECURITY FENCING SEE THROUGH SO CAN SEE PLANES
LID PARKING LOT CARS AND BUSES
MEMORIAL GARDEN SCULPTURE REMAINS IN PLACE
LOCATE MEMORIAL PLAQUES
MEMORIAL ROSE GARDEN
GRAND ENTRY THROUGH PARKING LOT
AWNING ENTRY AT MUSEUM ENTRY
FRONT ENTRY CONCRETE WALK REMAINS
ENTRANCE ROAD TO EVENT PARKING IN BACK
DRINKING FOUNTAIN
CAFE WITH UPPER STORY LOOK OUT DECK
REMOVE WALLS
SIGNAGE FROM STREET, FREEWAY, SIGNAGE ON BUILDING
SIDE WALK BIOSWALE PLANTINGS
BLUE STREAM LINE RESERVED TO NATURAL PLANTINGS
SUNKEN THEATER, OUTDOOR CLASSROOM

REAR OF MUSEUM :

CIRCULATION AROUND PLANES
RADAR TOWERS, AIR SIREN, COMMUNICATION TOWER REMAIN
DRINING FOUNTAINS
30' HEIGHT LIMIT
LARGE CARGO PLANE REMAIN IN PLACE
DESIGN WITH PLANE ABUTMENTS, POSSIBLY AROUND SPACE CAPSULE
2 FULL FIRE BASE REDESIGNS
NO TREES
OVERFLOW EVENT PLANNING, RV PARKING
KEEP BONE YARD
DESIGN CONCORD
DESIGN MEMORIAL FEATURES, KIDS PLAY
INTERCHANGEABLE PLANE SIGNAGE
PROVIDE SHADE AND NIGHT LIGHTING FOR EVENTS



THRESHOLDS MAP - SCALE AS NOTED

REVENUE ELEMENTS :

ARTIFACT MUSEUM

AIR SHOWS

OUTDOOR CLASSROOM

RETIREMENT PARTIES

NIGHT TIME EVENTS BY OUTDOOR HANGARS

MUSIC FESTIVALS WITH GUEST SPEAKERS

FEATURED PLANE EVENTS WITH COCKPIT VIEWING

MEMORIAL FESTIVITIES FOR HOLIDAY

3 CAFES FACILITIES

HONOR VETERAN DAYS WITH FAMILY EVENTS

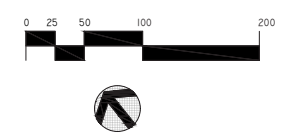
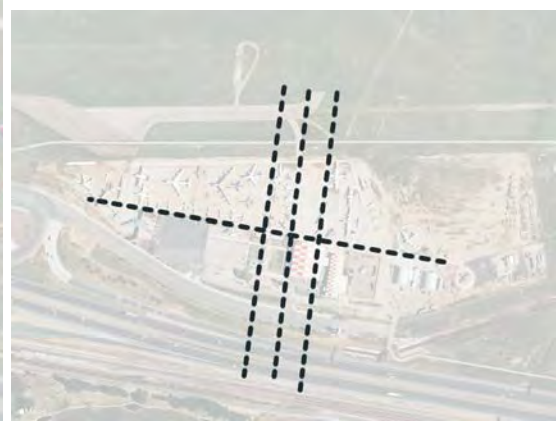
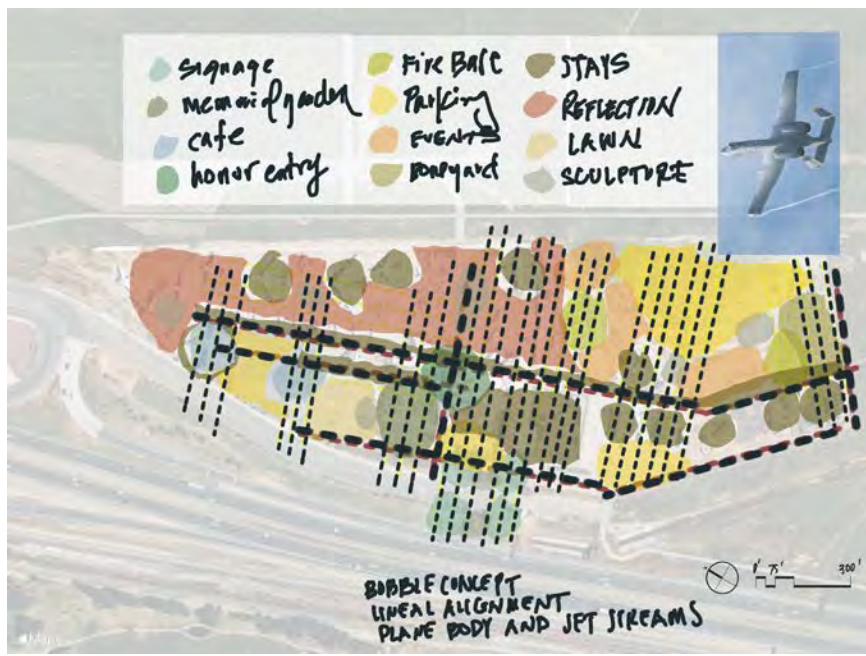
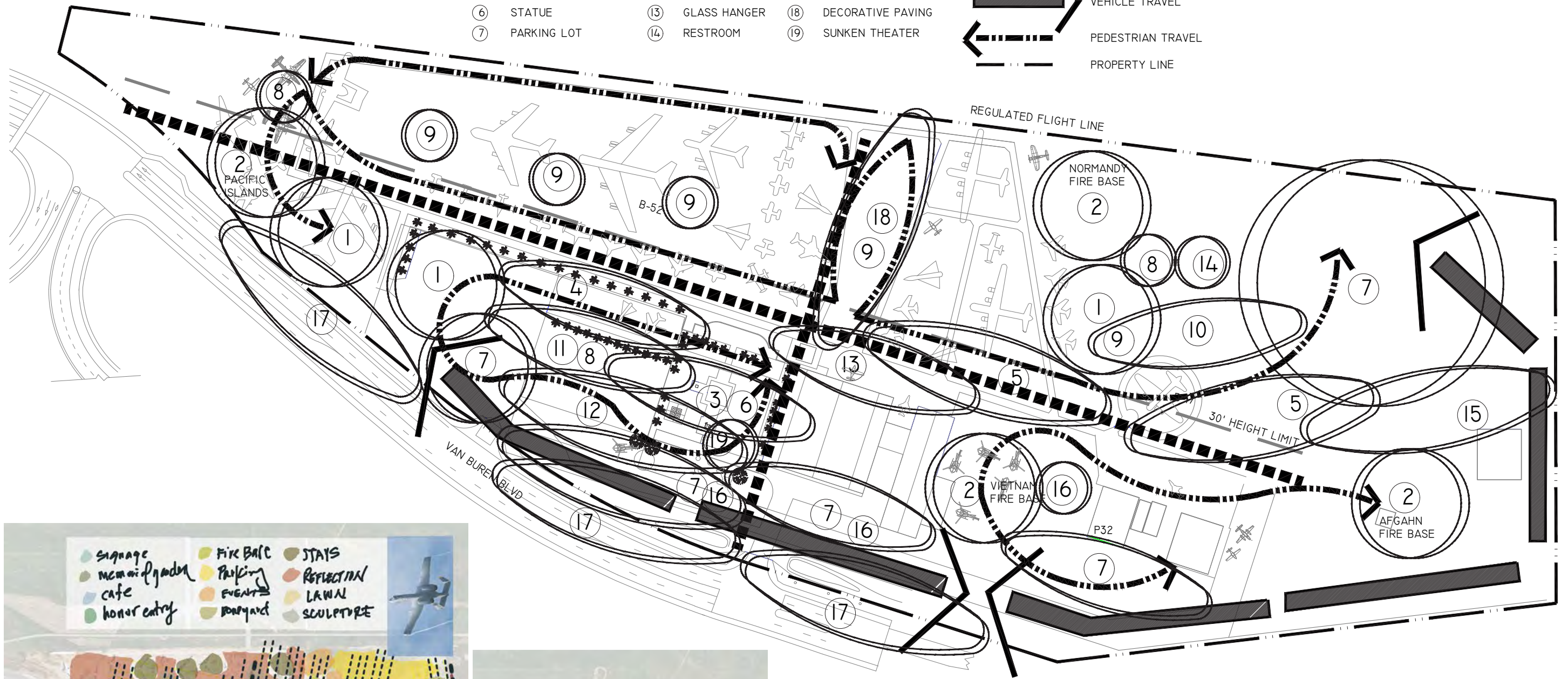
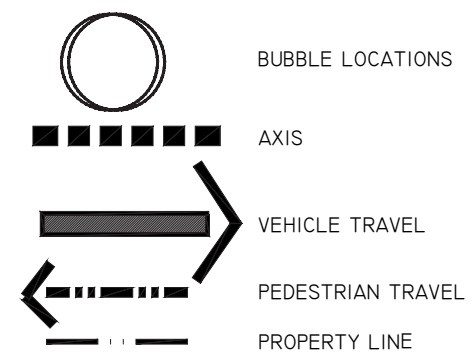
GLASS MEMORIAL WITH ETCHED NAMES FOR REVEAL PARTIES

PLANE RESTORATION PARTIES FOR FEATURED PLANES

FIRE BASE EVENTS WITH SOUND EFFECTS ON SELECTED DAYS

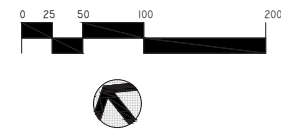
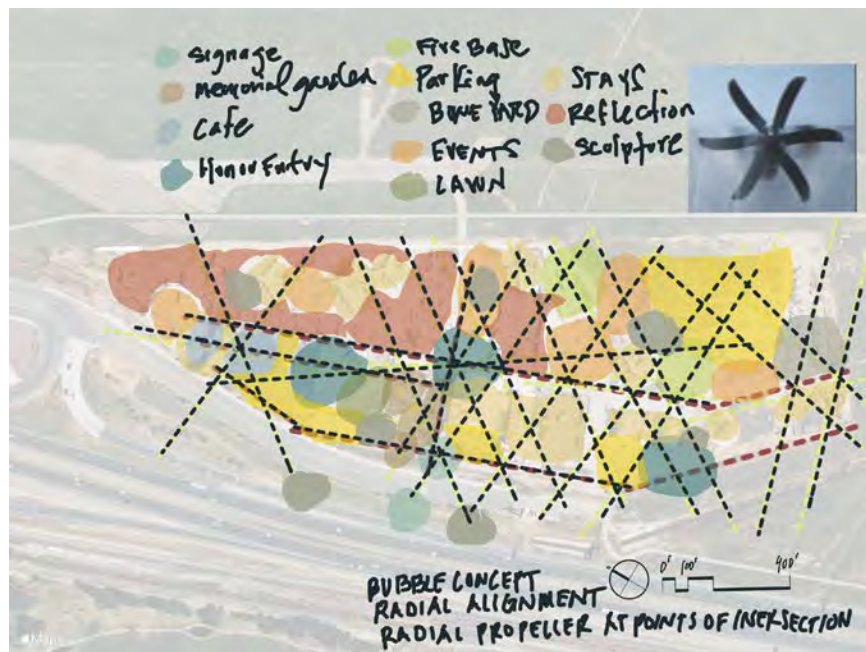
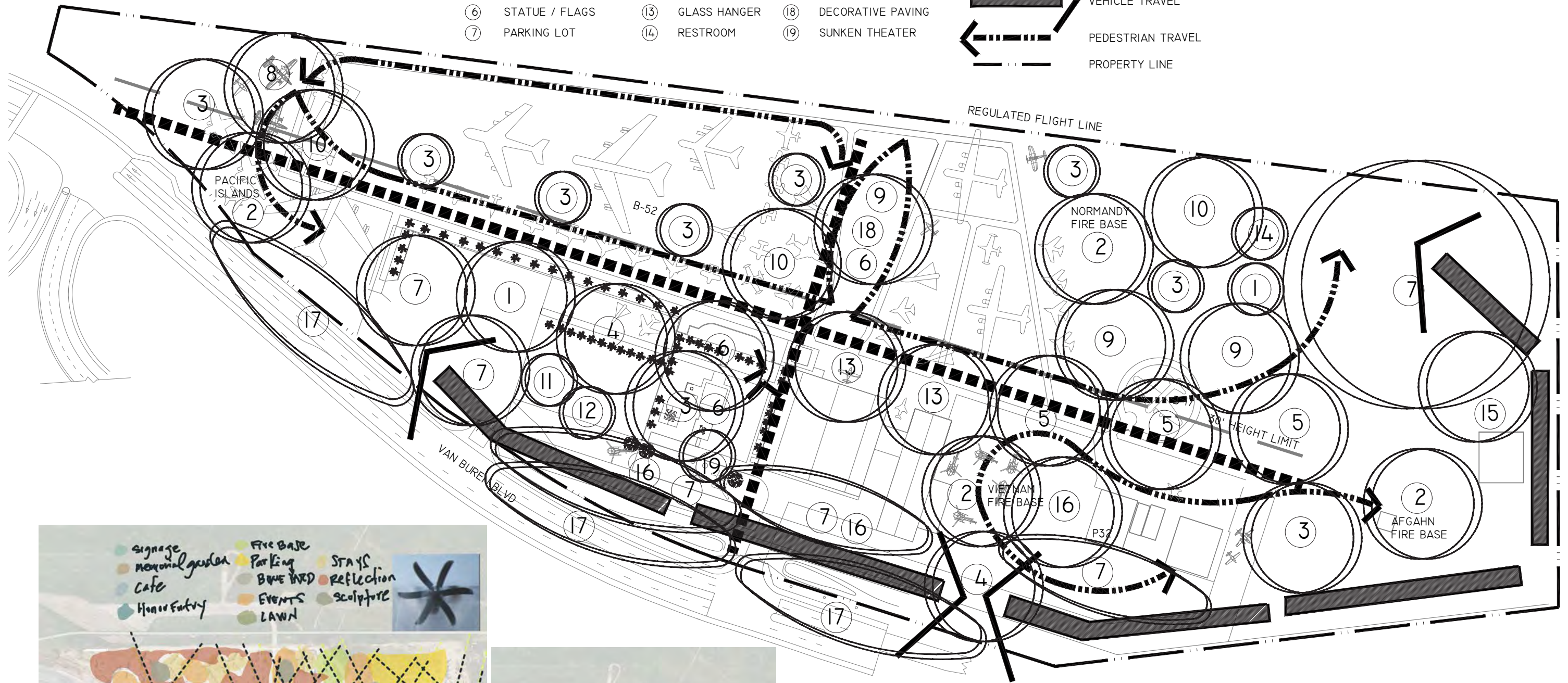
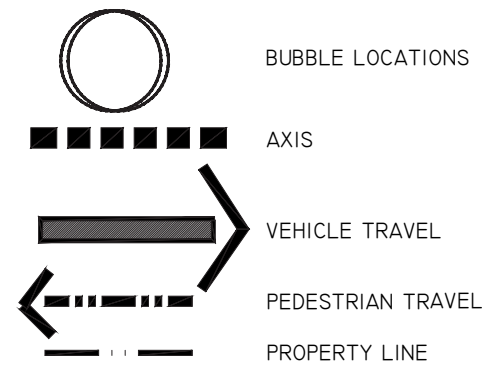


- ① CAFE
- ② FIRE BASE
- ③ MEMORIAL GARDEN
- ④ GARDEN ARBOR
- ⑤ SHADE
- ⑥ STATUE
- ⑦ PARKING LOT
- ⑧ KIDS PLAY
- ⑨ PICNIC
- ⑩ STAGE
- ⑪ LAWN
- ⑫ ROSE GARDEN
- ⑬ GLASS HANGER
- ⑭ RESTROOM
- ⑮ BONE YARD
- ⑯ NATIVE GARDEN
- ⑰ LID RESTORATION
- ⑱ DECORATIVE PAVING
- ⑲ SUNKEN THEATER

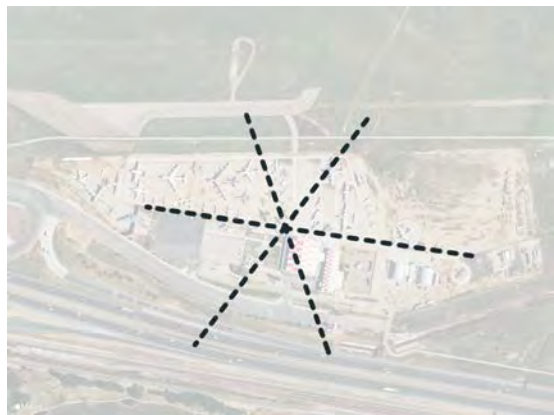
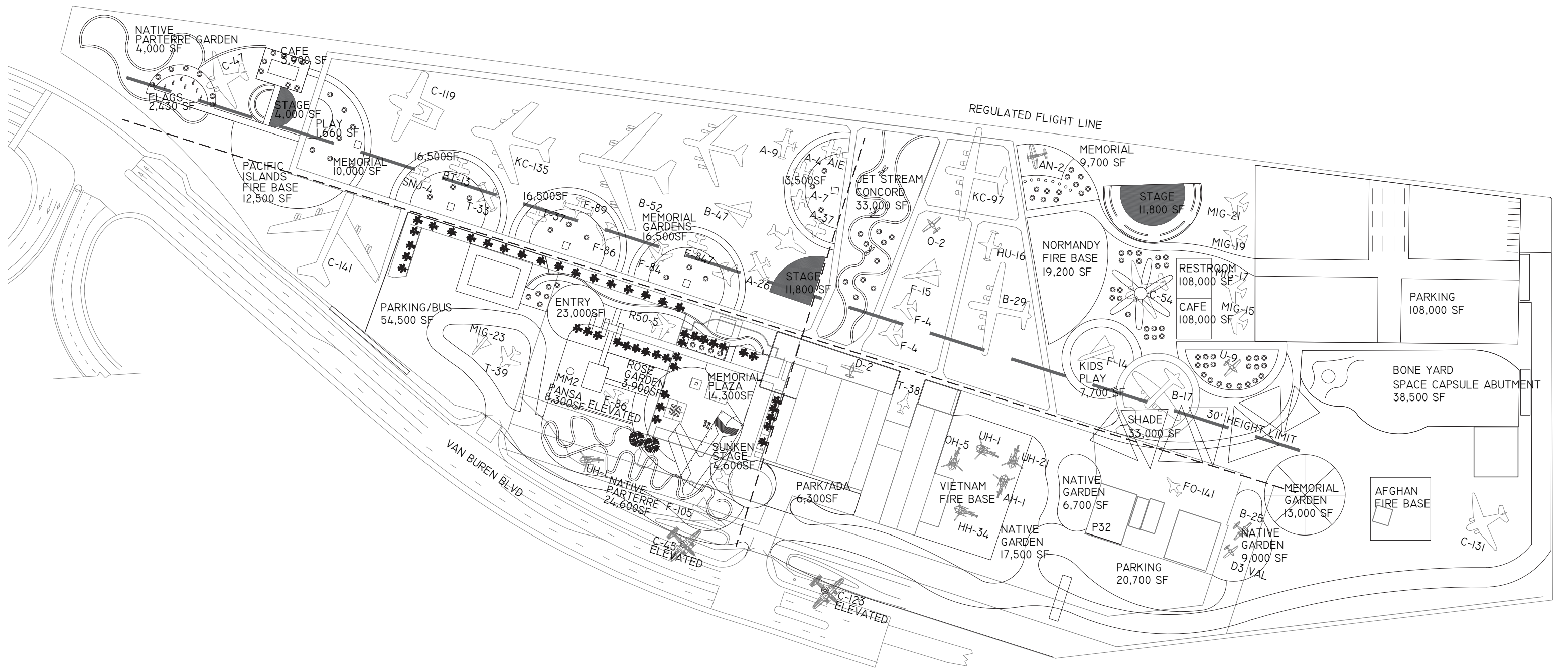


MARSH FIELD AIR MUSEUM
LINEAL CONCEPT DIAGRAM

- | | | |
|-------------------|----------------|---------------------|
| ① CAFE | ⑧ KIDS PLAY | ⑮ BONE YARD |
| ② FIRE BASE | ⑨ PICNIC | ⑯ NATIVE GARDEN |
| ③ MEMORIAL GARDEN | ⑩ STAGE | ⑰ LID RESTORATION |
| ④ GARDEN ARBOR | ⑪ LAWN | ⑱ DECORATIVE PAVING |
| ⑤ SHADE | ⑫ ROSE GARDEN | ⑲ SUNKEN THEATER |
| ⑥ STATUE / FLAGS | ⑬ GLASS HANGER | |
| ⑦ PARKING LOT | ⑭ RESTROOM | |

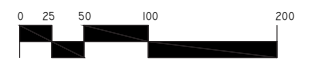
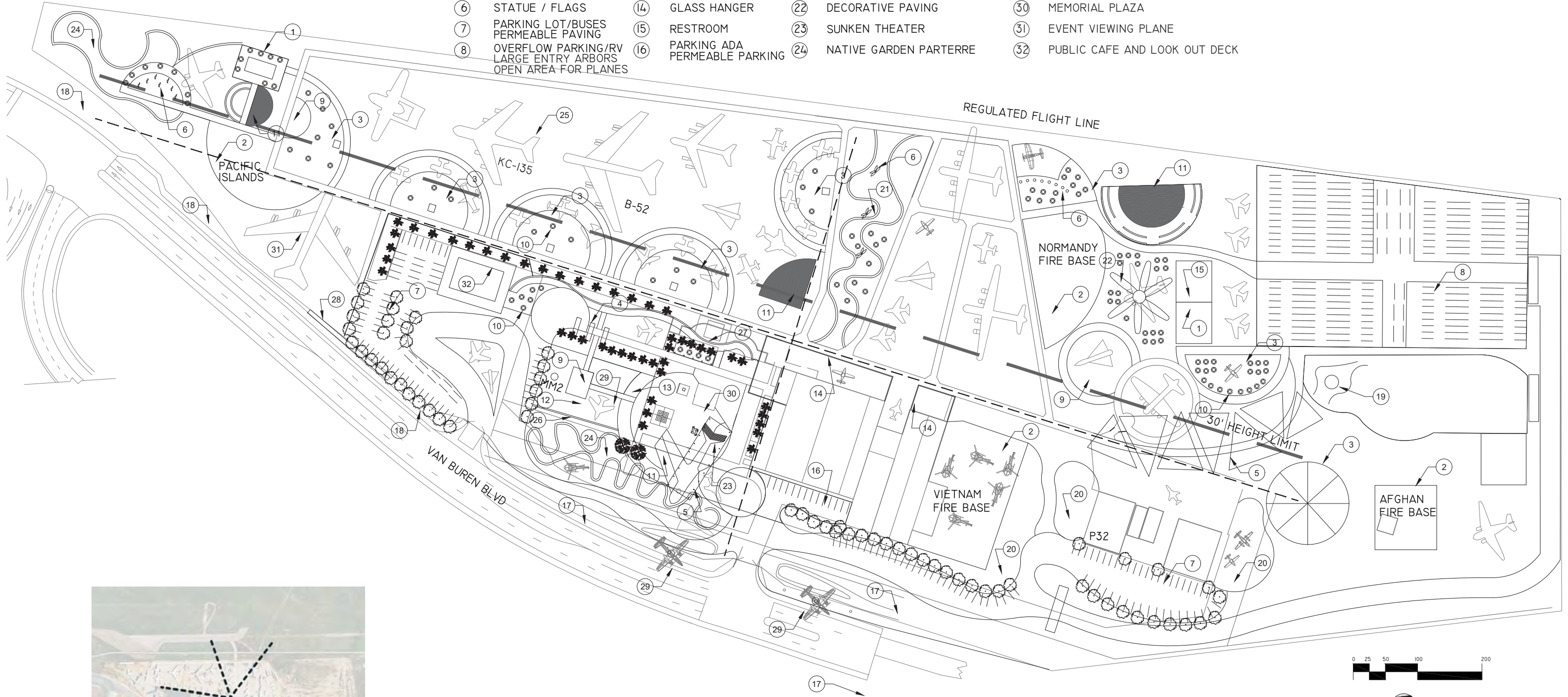


MARSH FIELD AIR MUSEUM
 RADIAL CONCEPT DIAGRAM
 FINAL CONCEPT DIAGRAM



MARSH FIELD AIR MUSEUM
RADIAL SCHEMATIC DESIGN

- | | | | |
|---|------------------------------------|-------------------------------|---------------------------------|
| ① CAFE | ⑨ KIDS PLAY | ⑬ BLUE STREAM RESTORATION | ⑲ HISTORICAL WAR PLANES |
| ② FIRE BASE | ⑩ PICNIC | ⑭ LID BIOSWALES | ⑳ MEMORIAL GARDEN WALL |
| ③ MEMORIAL GARDEN | ⑪ STAGE | ⑮ BONE YARD | ㉑ ETCHED GLASS MEMORIAL WALL |
| ④ GARDEN ARBOR | ⑫ PANSA LAWN | ⑯ SPACE CAPSULE ABUTMENT | ㉒ LARGE SIGNAGE |
| ⑤ SHADE | ⑬ ROSE GARDEN | ⑰ NATIVE GARDEN | ㉓ ELEVATED PLANES |
| ⑥ STATUE / FLAGS | ⑭ GLASS HANGER | ⑱ SYNTHETIC TURF DECOR PAVING | ㉔ MEMORIAL PLAZA |
| ⑦ PARKING LOT/BUSES
PERMEABLE PAVING | ⑮ RESTROOM | ㉒ DECORATIVE PAVING | ㉕ EVENT VIEWING PLANE |
| ⑧ OVERFLOW PARKING/RV
LARGE ENTRY ARBORS
OPEN AREA FOR PLANES | ⑯ PARKING ADA
PERMEABLE PARKING | ㉓ SUNKEN THEATER | ㉖ PUBLIC CAFE AND LOOK OUT DECK |
| | | ㉔ NATIVE GARDEN PARTERRE | |



MARSH FIELD AIR MUSEUM
 MASTER PLAN
 DESIGN DEVELOPMENT

DESIGN INSPIRATION IMAGES



BREAD TRUCK FOR FESTIVALS THAT SELLS SWEET TREATS



CURVING STRUCTURES THAT MIMIC RADIAL DESIGN ELEMENT



SUN SHADES AND COVERS THAT REFLECT TREE FOLIAGE WITH AMBIANT NIGHT LIGHTING ON GROUND SURFACE PLANE



WROUGHT IRON ENTRY GATES WITH IRON PLANE DETAILS ON METAL STRUCTURE





PARTERRE GARDENS WITH NATIVE PLANTINGS AND NATIVE TEUCRIUM TO REPLACE BOXWOOD HEDGES



NATIVE PLANTING GARDENS AND MEDICINAL HEALING GARDEN



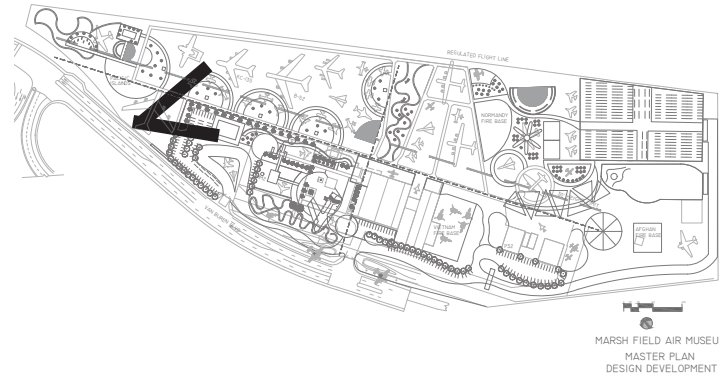
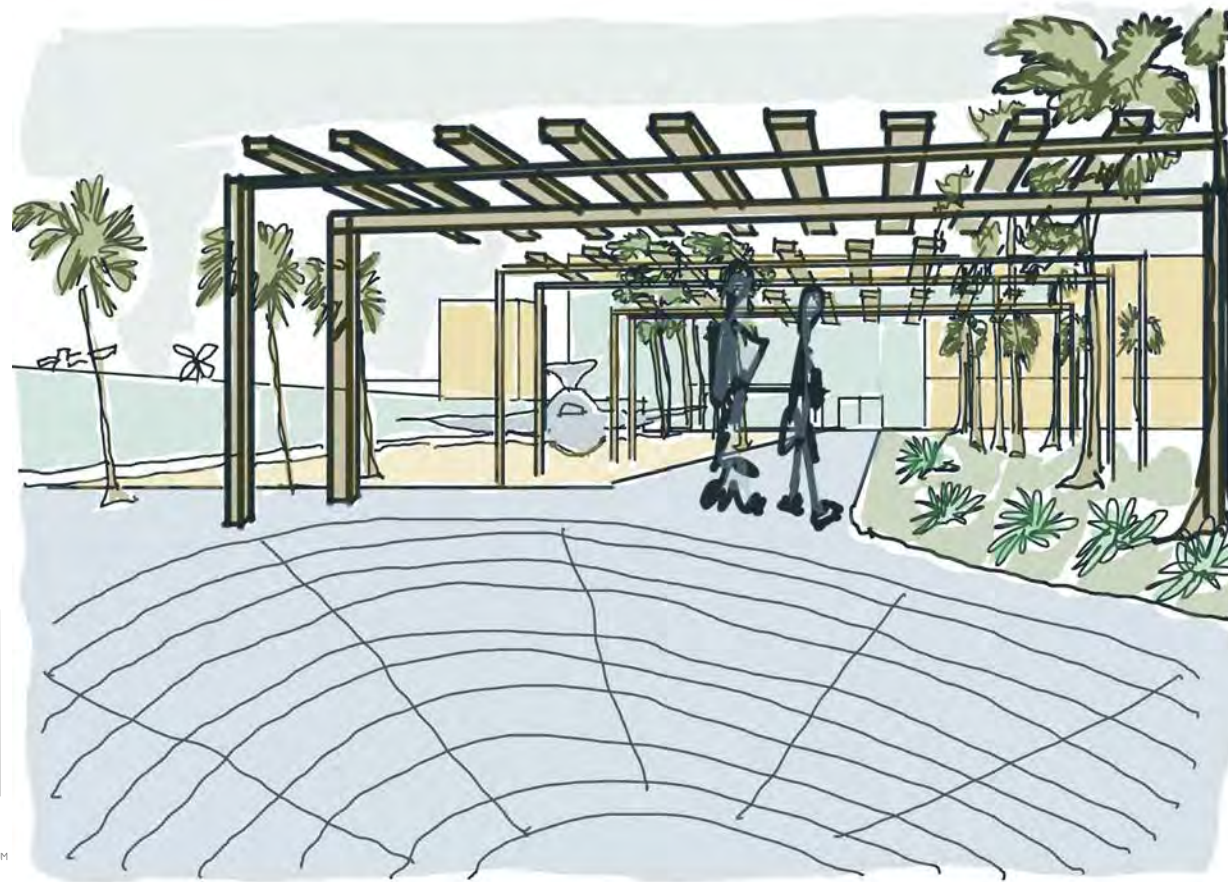
KIDS PLAY APPARATUS

- | | | | |
|---|------------------------------------|-------------------------------|---------------------------------|
| ① CAFE | ⑨ KIDS PLAY | ⑰ BLUE STREAM RESTORATION | ⑳ HISTORICAL WAR PLANES |
| ② FIRE BASE | ⑩ PICNIC | ⑱ LID BIOSWALES | ㉑ MEMORIAL GARDEN WALL |
| ③ MEMORIAL GARDEN | ⑪ STAGE | ㉒ BONE YARD | ㉒ ETCHED GLASS MEMORIAL WALL |
| ④ GARDEN ARBOR | ⑫ PANSO LAWN | ㉓ SPACE CAPSULE ABUTMENT | ㉓ LARGE SIGNAGE |
| ⑤ SHADE | ⑬ ROSE GARDEN | ㉔ NATIVE GARDEN | ㉔ ELEVATED PLANES |
| ⑥ STATUE / FLAGS | ⑭ GLASS HANGER | ㉕ SYNTHETIC TURF DECOR PAVING | ㉕ MEMORIAL PLAZA |
| ⑦ PARKING LOT/BUSES
PERMEABLE PAVING | ⑮ RESTROOM | ㉖ DECORATIVE PAVING | ㉖ EVENT VIEWING PLANE |
| ⑧ OVERFLOW PARKING/RV
LARGE ENTRY ARBORS
OPEN AREA FOR PLANES | ⑯ PARKING ADA
PERMEABLE PARKING | ㉗ SUNKEN THEATER | ㉗ PUBLIC CAFE AND LOOK OUT DECK |
| | | ㉘ NATIVE GARDEN PARTERRE | |



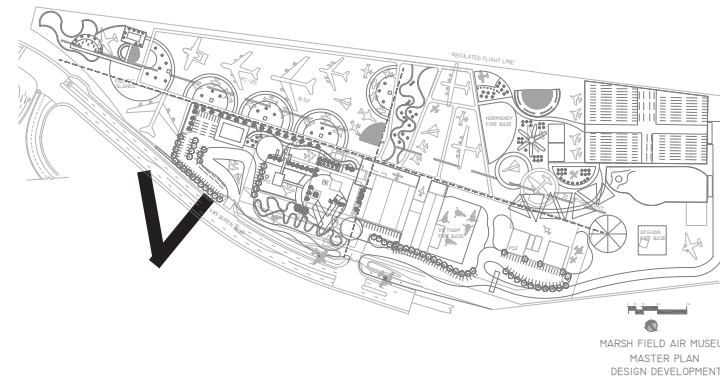
MARSH FIELD AIR MUSEUM
ILLUSTRATIVE MASTER PLAN
DESIGN DEVELOPMENT

ENTRY PERSPECTIVE

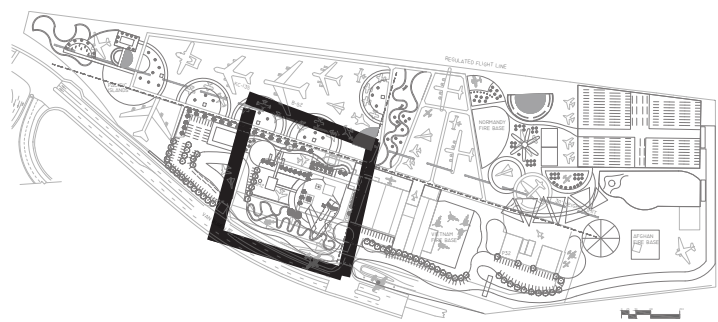


MARCH FIELD AIR MUSEUM
MASTER PLAN
DESIGN DEVELOPMENT

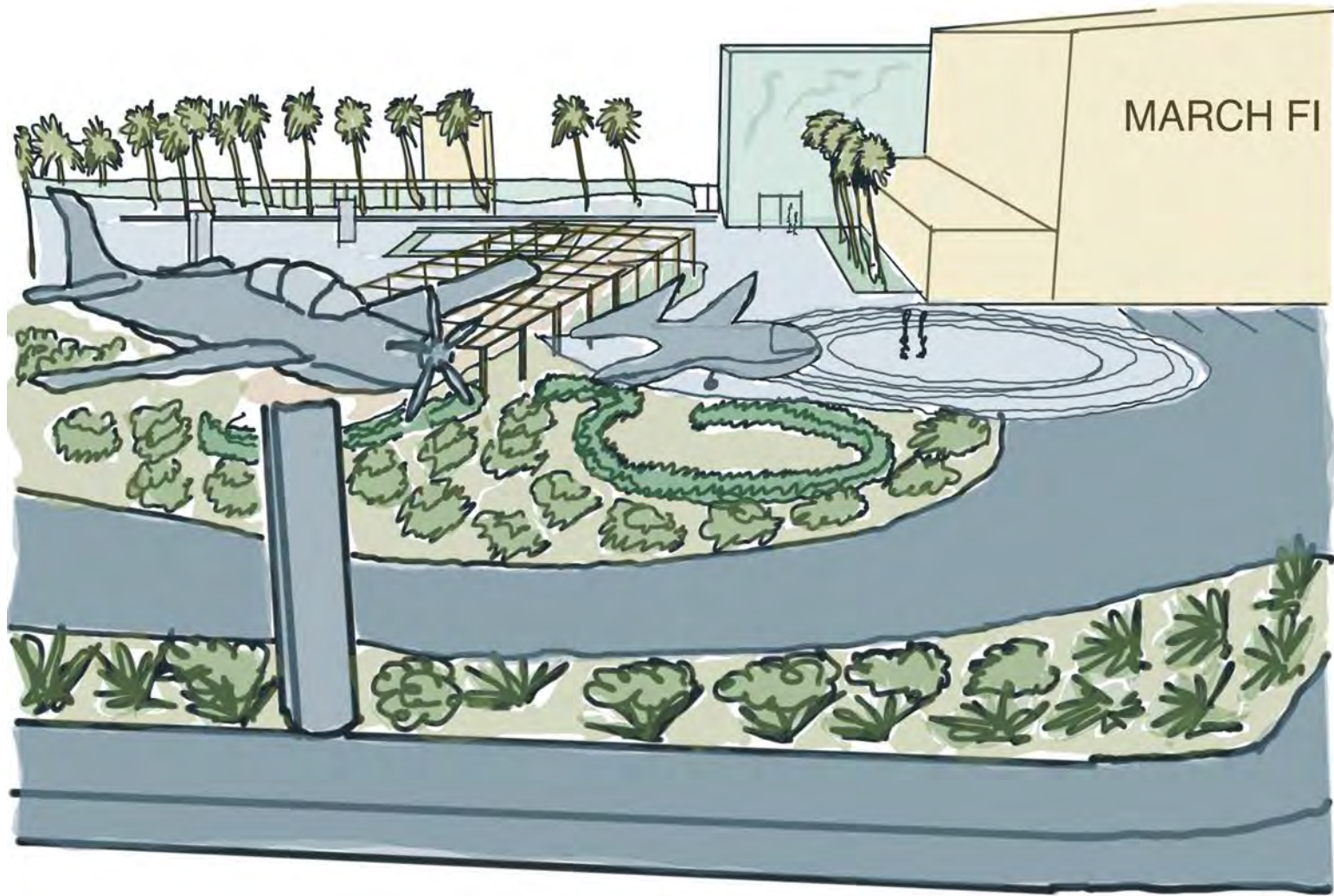
NIGHT TIME SIGNAGE PERSPECTIVE



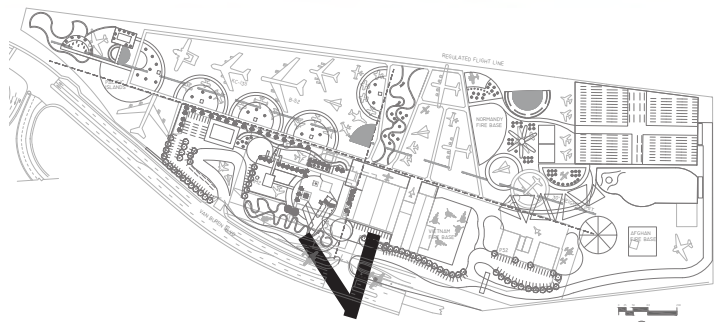
MEMORIAL GARDEN ENLARGEMENT



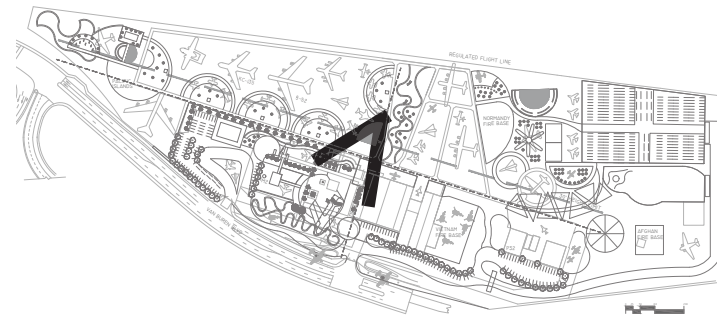
MARSH FIELD AIR MUSEUM
 MASTER PLAN
 DESIGN DEVELOPMENT



ELVATED PLANE
ENTRY PERSPECTIVE

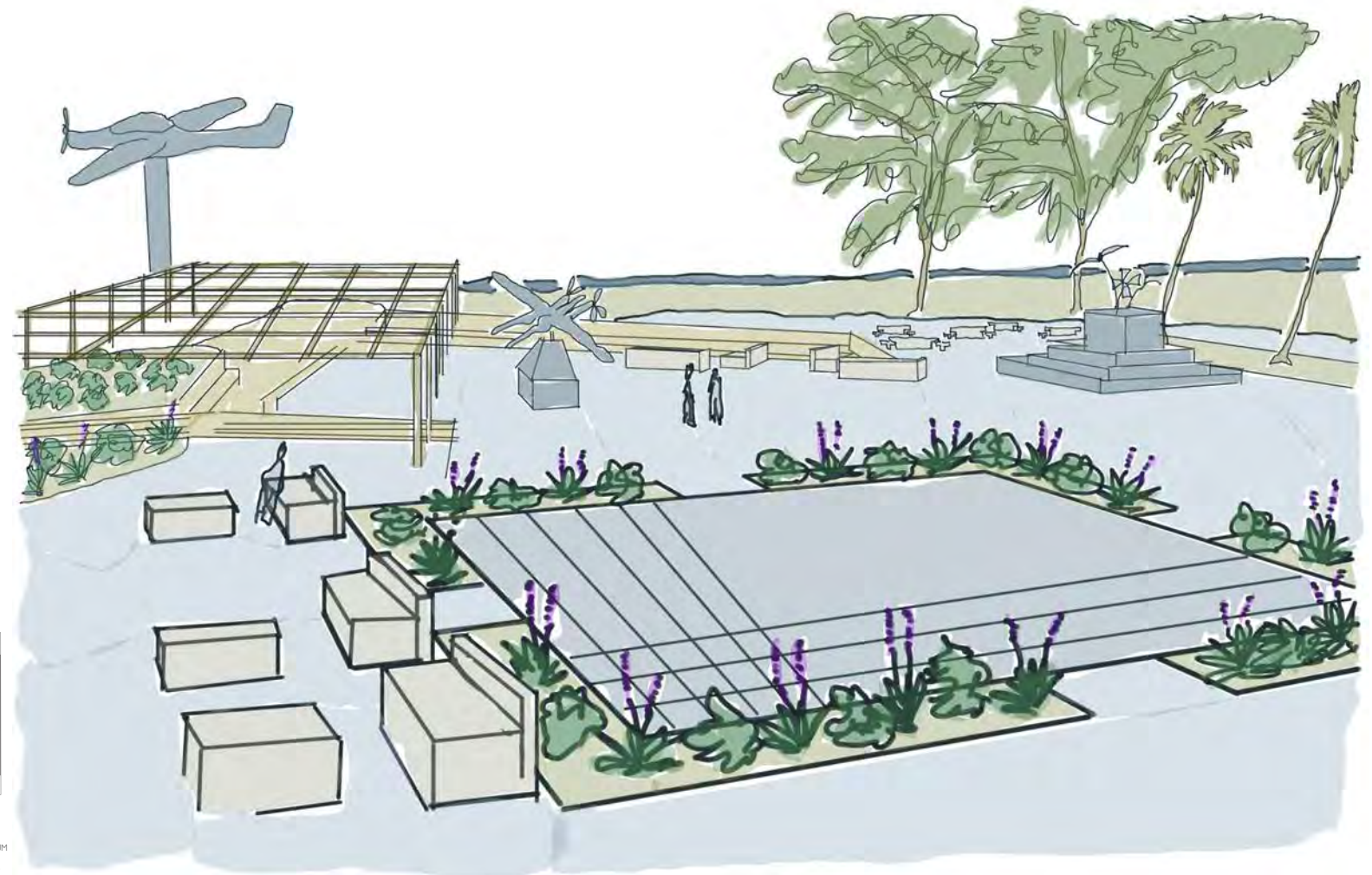


MARSH FIELD AIR MUSEUM
MASTER PLAN
DESIGN DEVELOPMENT

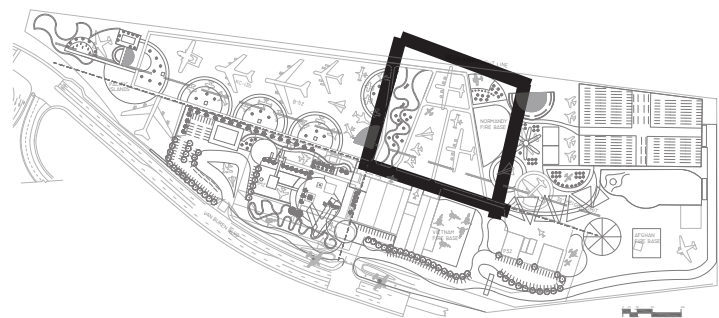
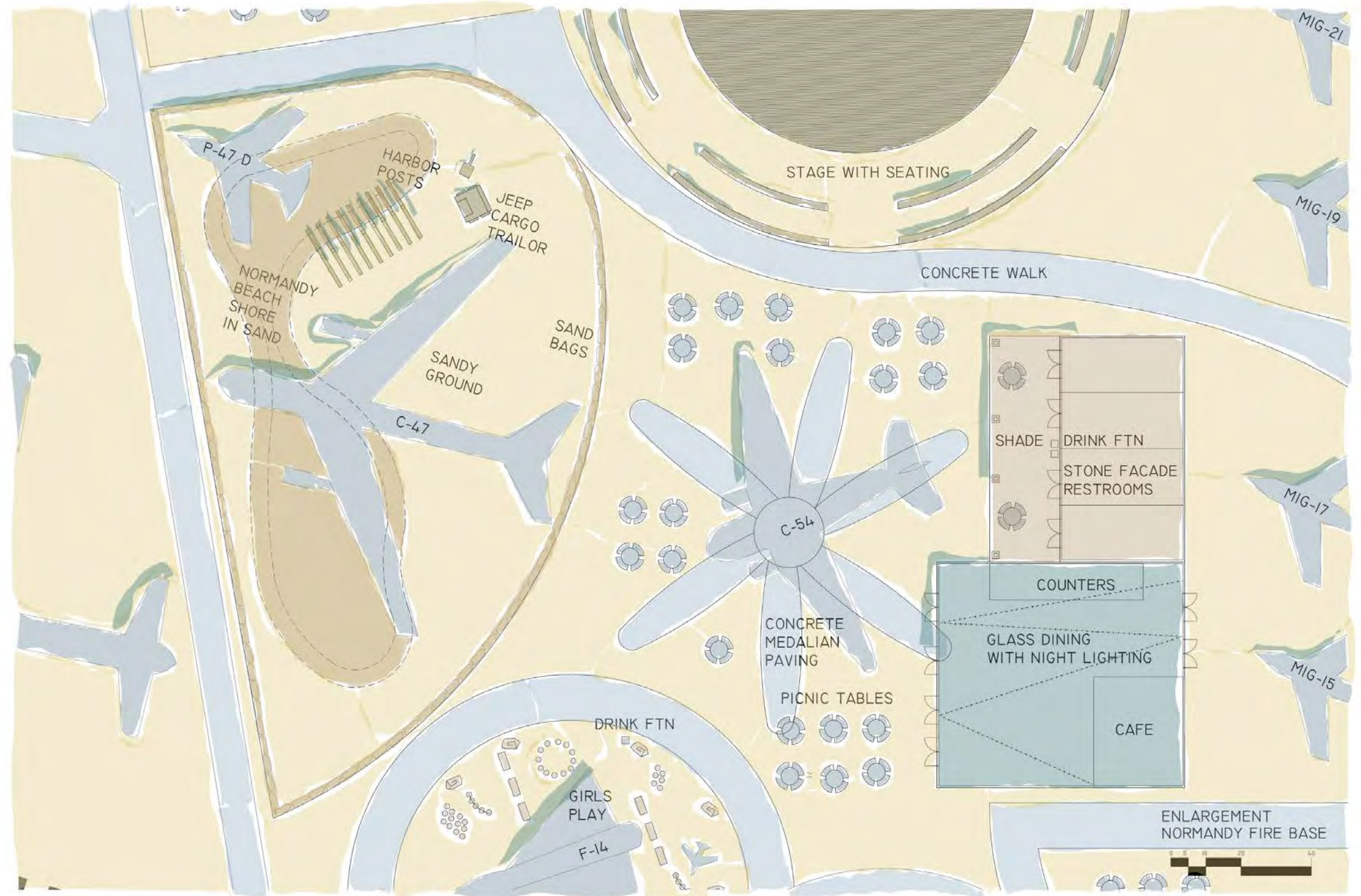


MARSH FIELD AIR MUSEUM
MASTER PLAN
DESIGN DEVELOPMENT

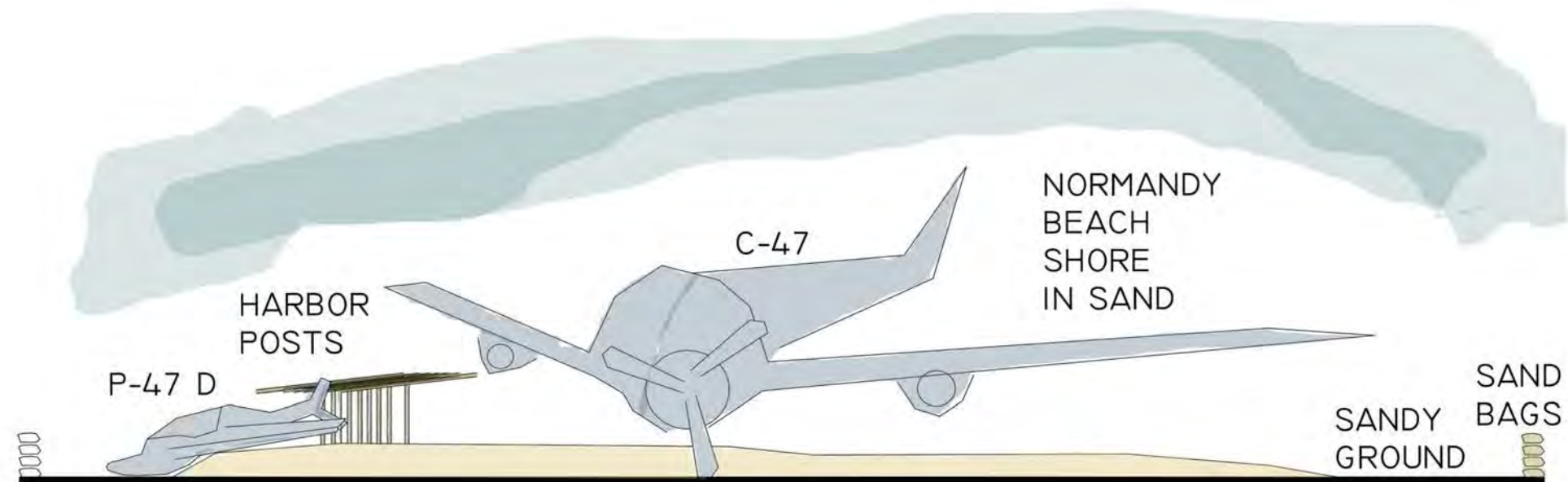
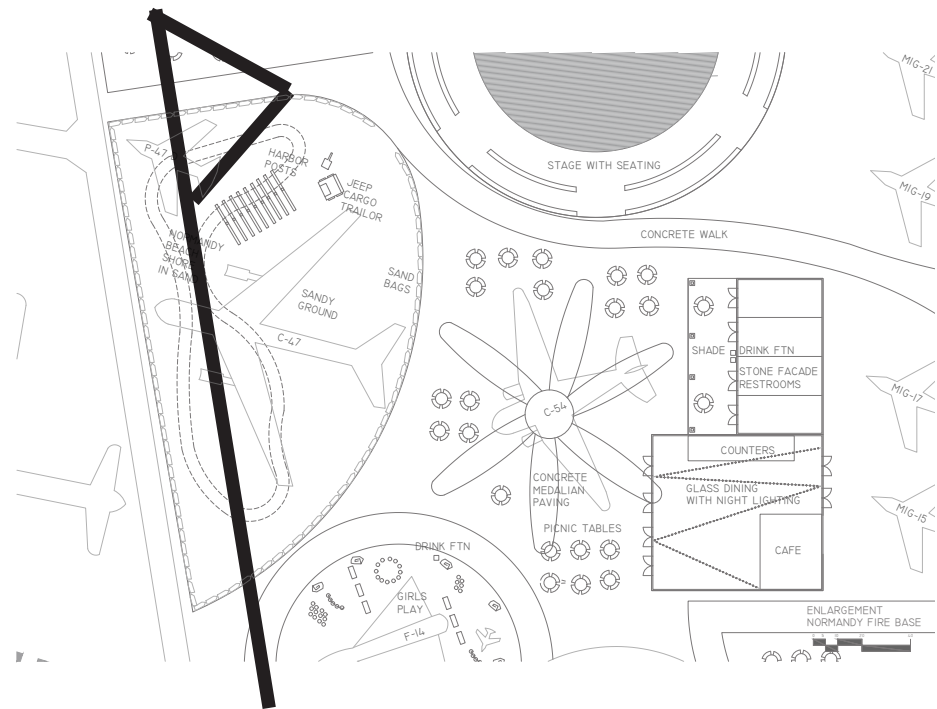
MEMORIAL GARDEN
PERSPECTIVE



**NORMANDY FIRE BASE,
CAFE, STAGE,
KIDS PLAY ENLARGEMENT**

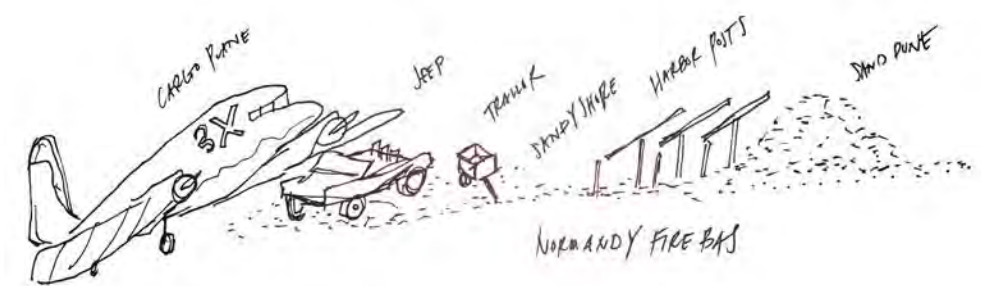
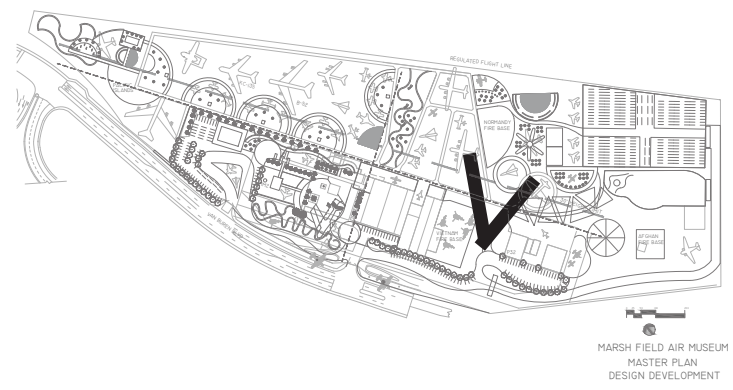
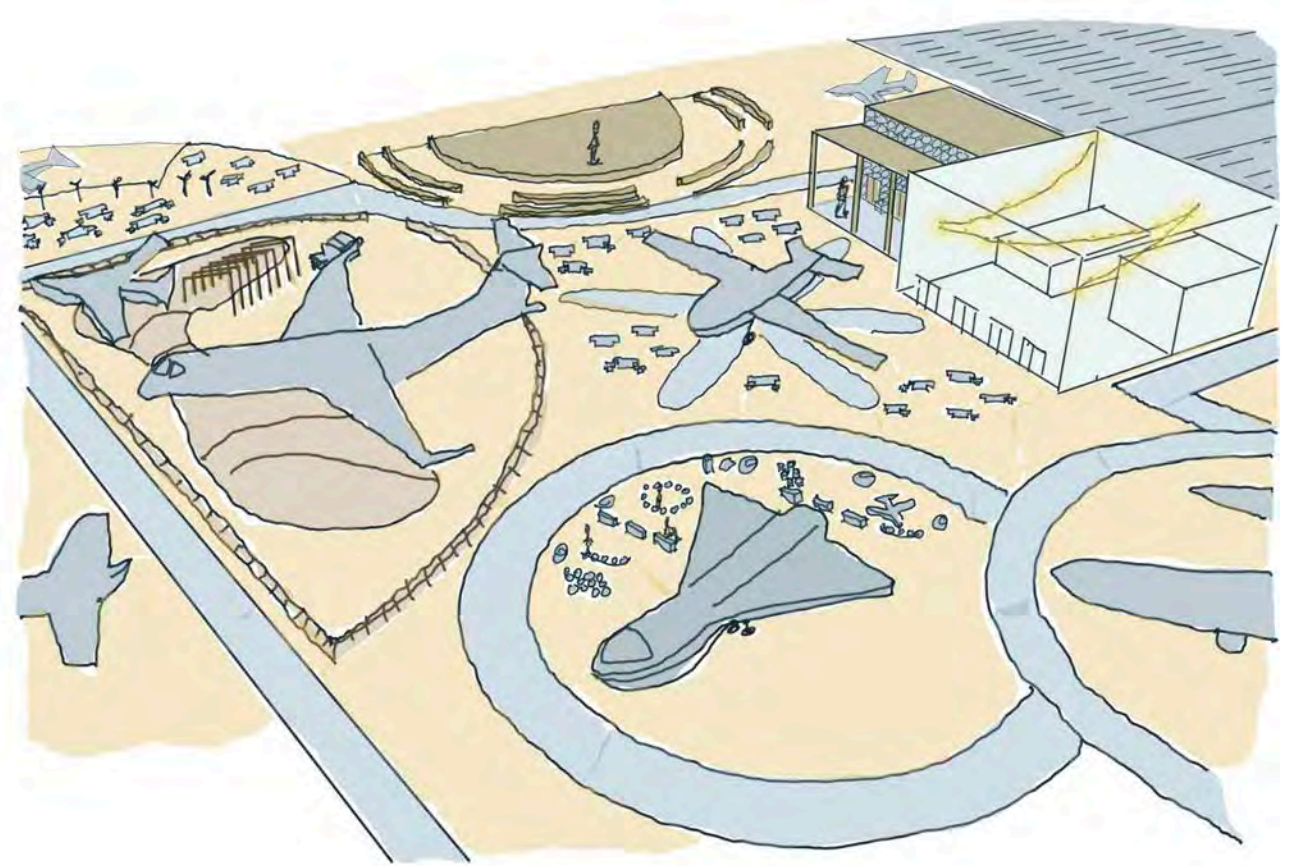


MARSH FIELD AIR MUSEUM
MASTER PLAN
DESIGN DEVELOPMENT

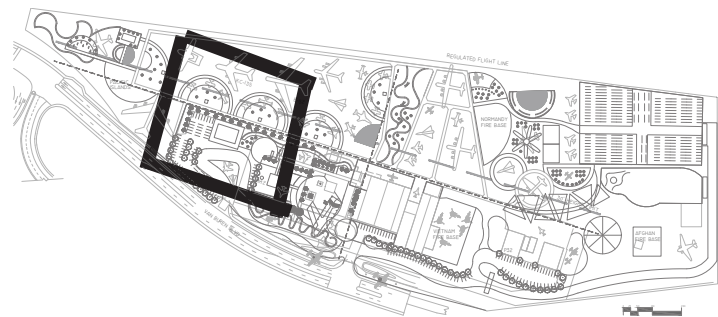


SECTION
NORMANDY FIRE BASE

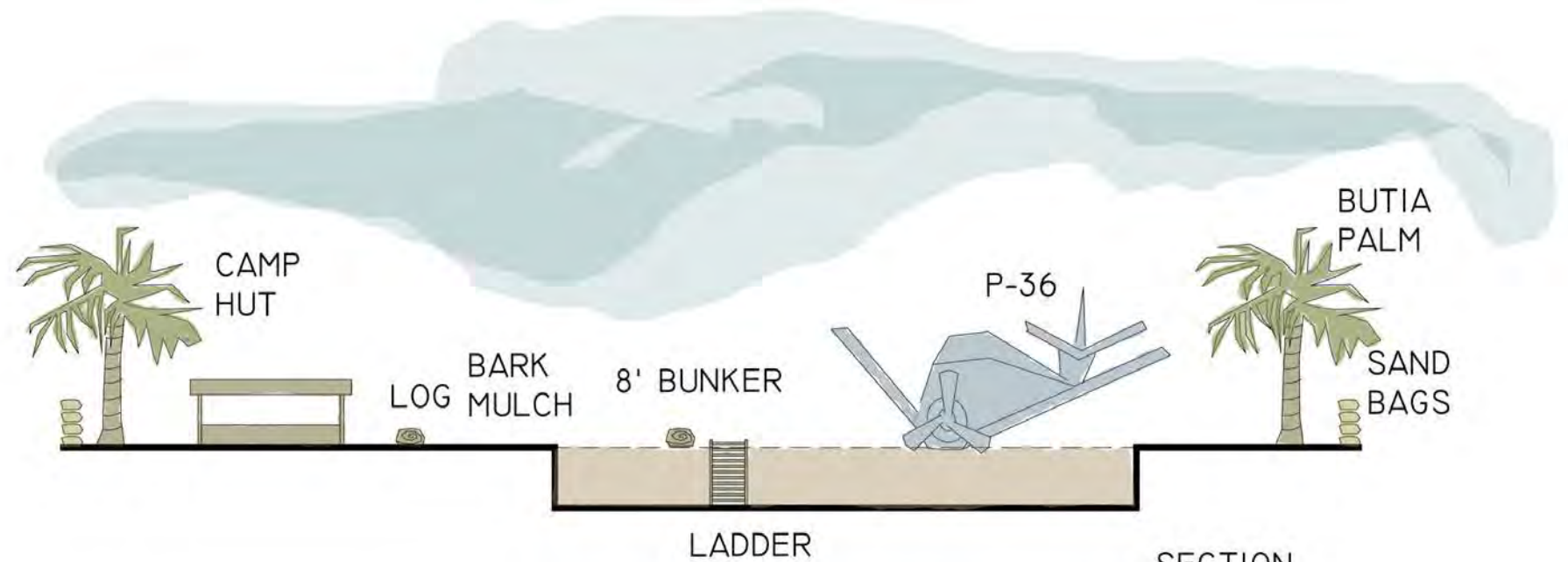
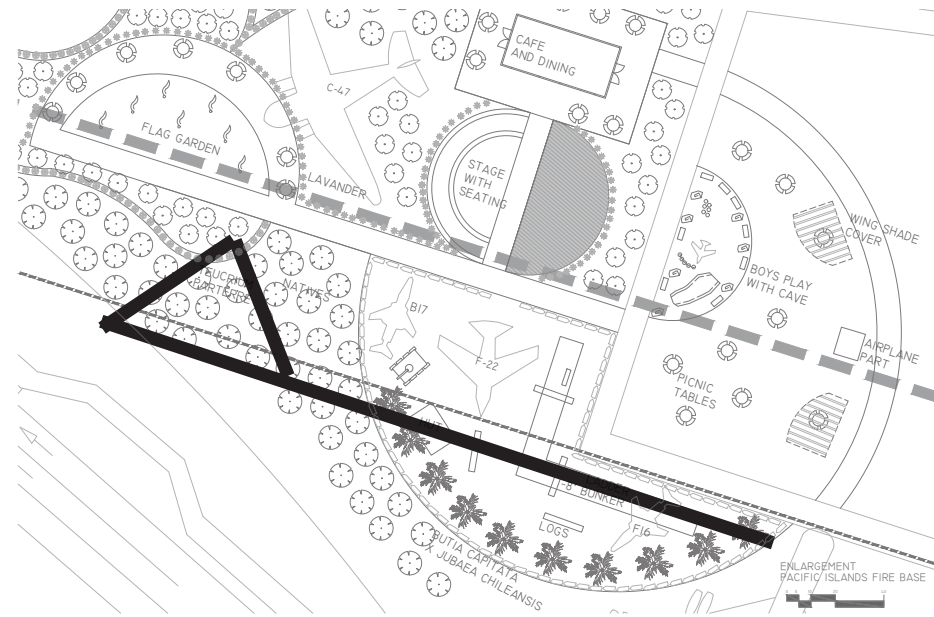
NORMANDY FIRE BASE,
CAFE, STAGE,
KIDS PLAY ELEVATION
AND PERSPECTIVE



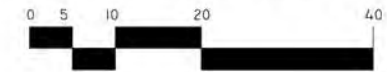
PACIFIC ISLAND FIRE BASE,
 FLAGE GARDEN,
 CAFE, KIDS PLAY,
 STAGE ENLARGEMENT



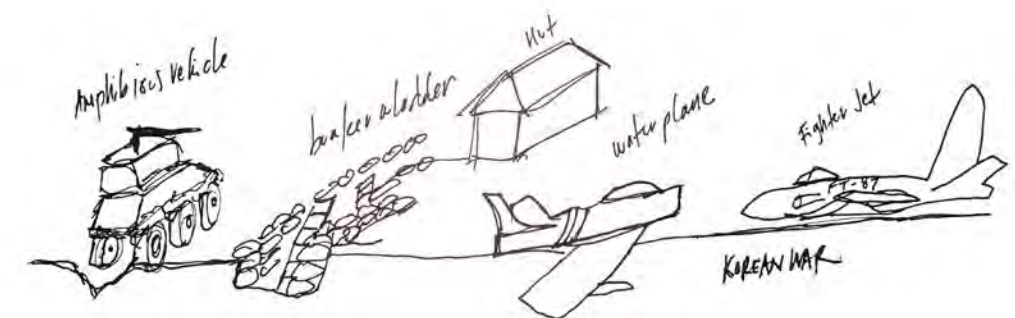
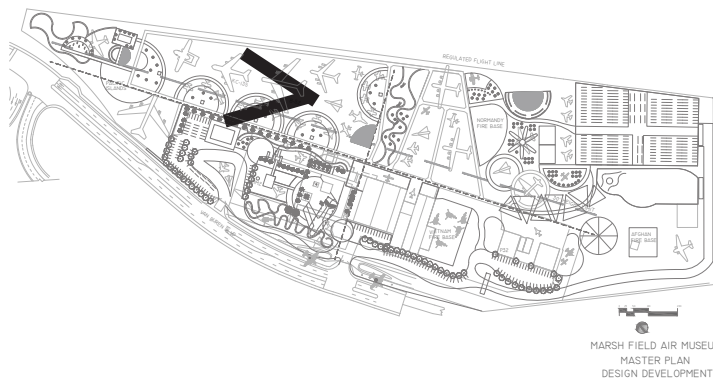
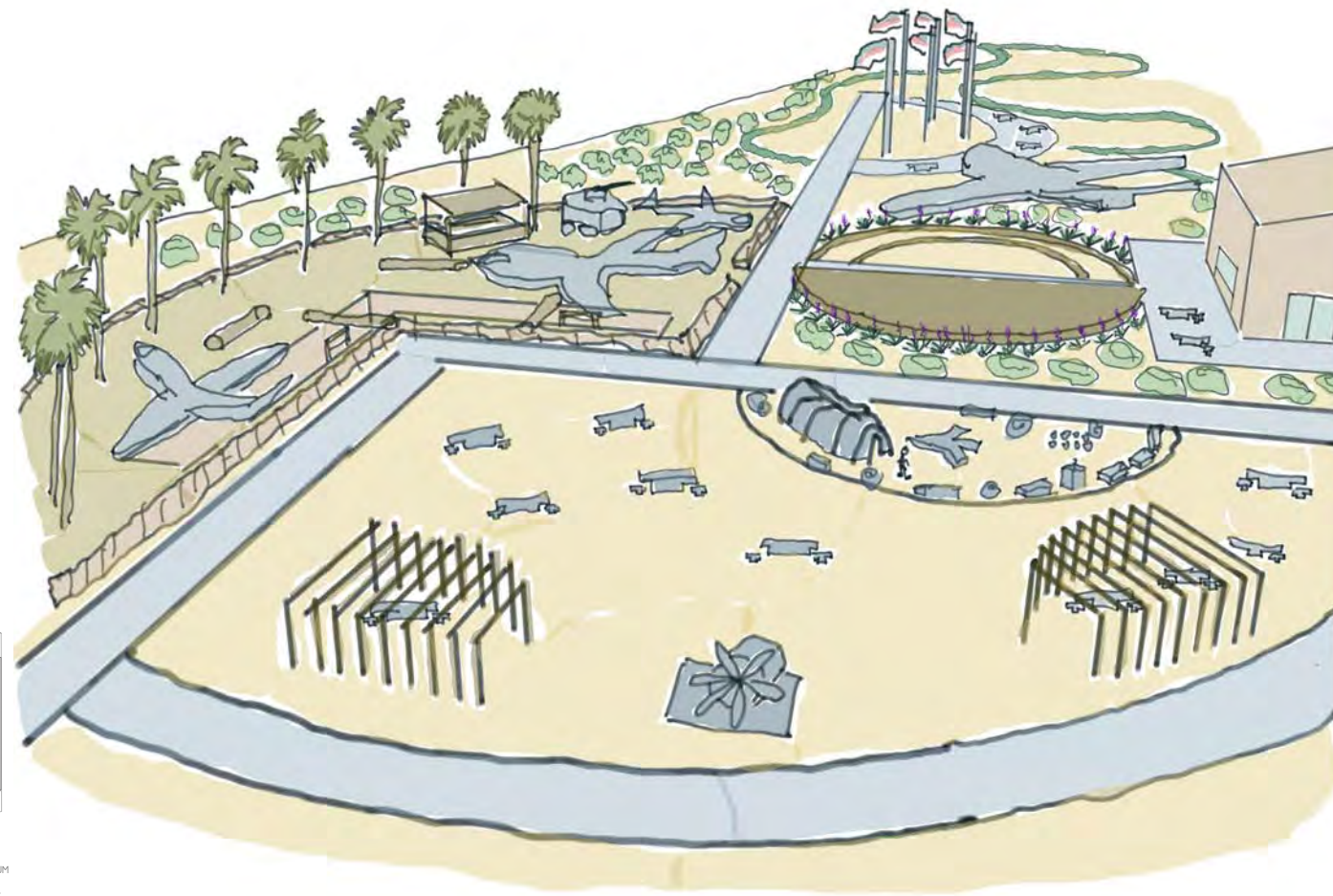
MARSH FIELD AIR MUSEUM
 MASTER PLAN
 DESIGN DEVELOPMENT

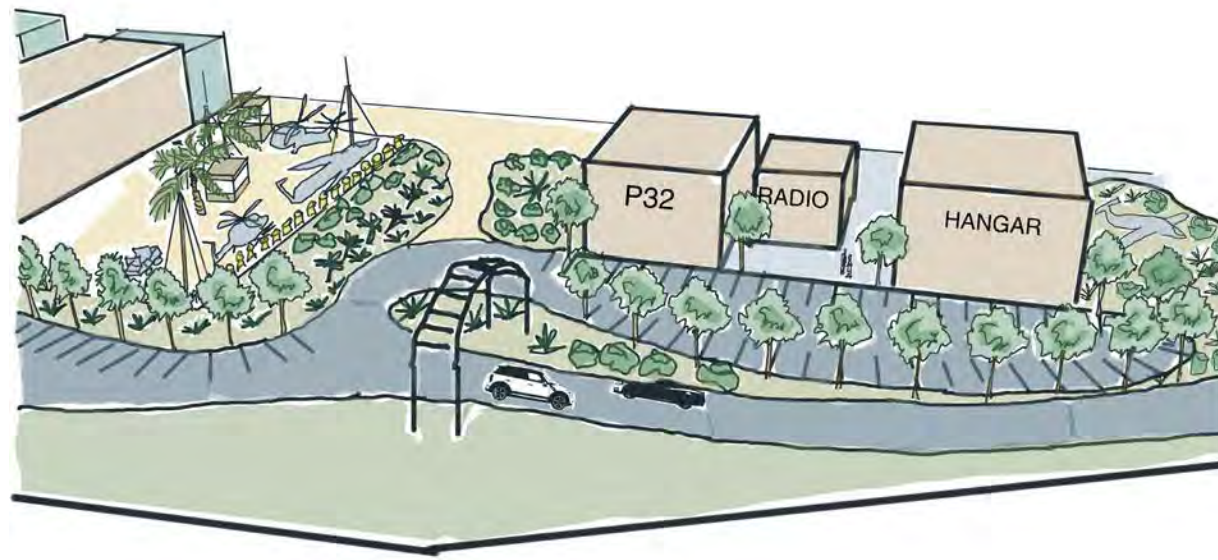
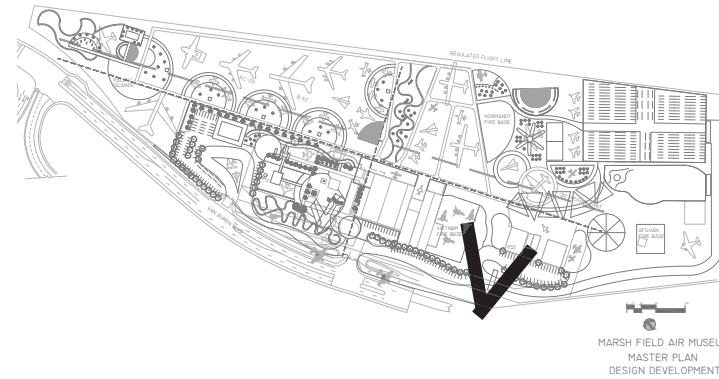


SECTION
PACIFIC ISLANDS FIRE BASE

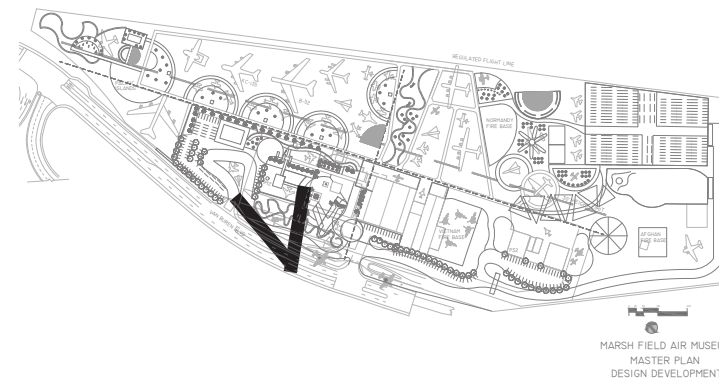


PACIFIC ISLAND FIRE BASE,
FLAGE GARDEN,
CAFE, KIDS PLAY,
STAGE ELEVATION
AND PERSPECTIVE

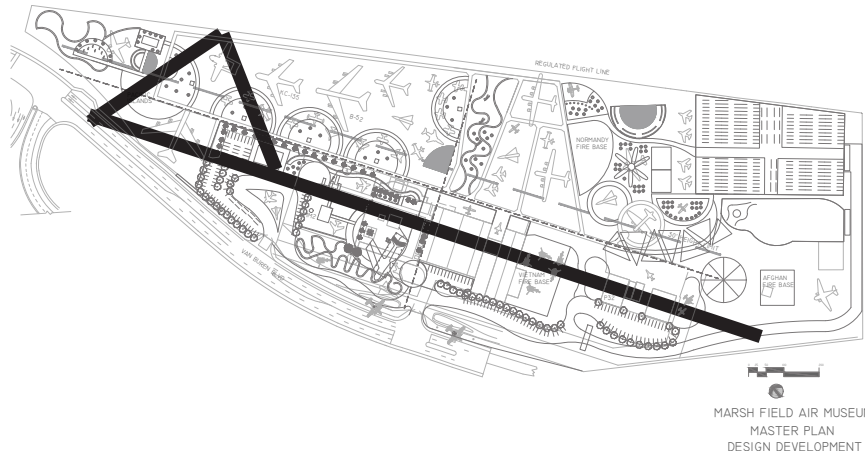




VIETNAM FIRE BASE
AND RESTORATION
HANGAR PERSPECTIVE

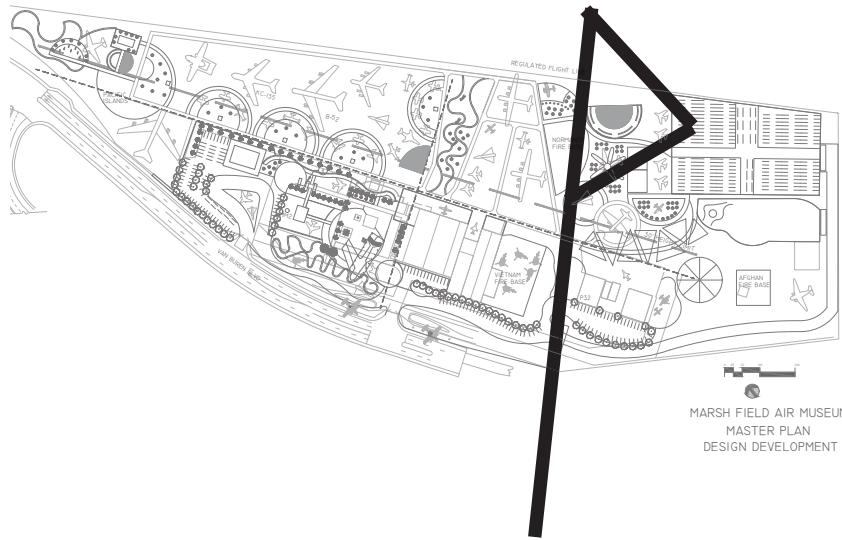
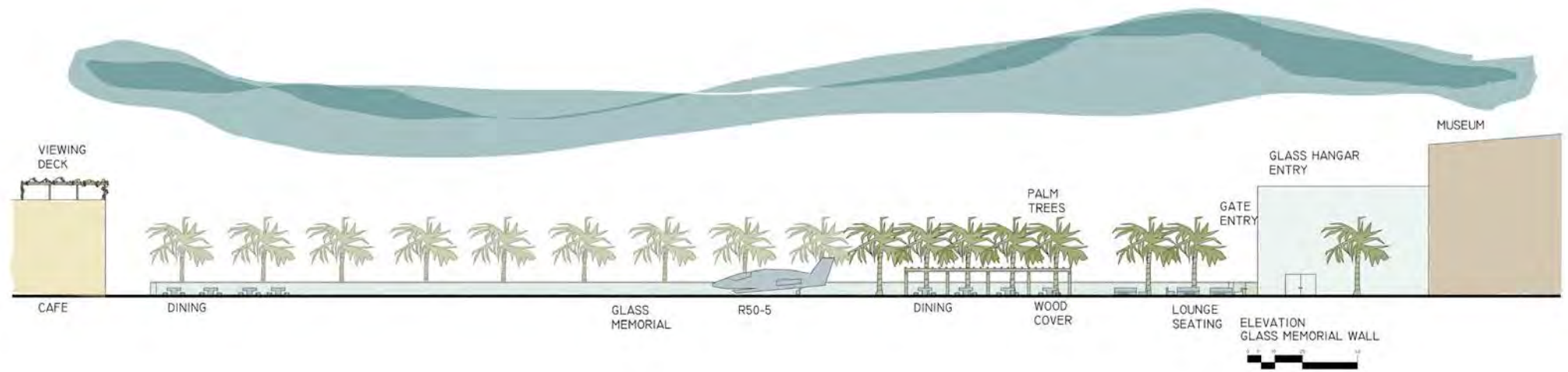


PARKING LOT, CAFE,
KIDS PLAY PERSPECTIVE



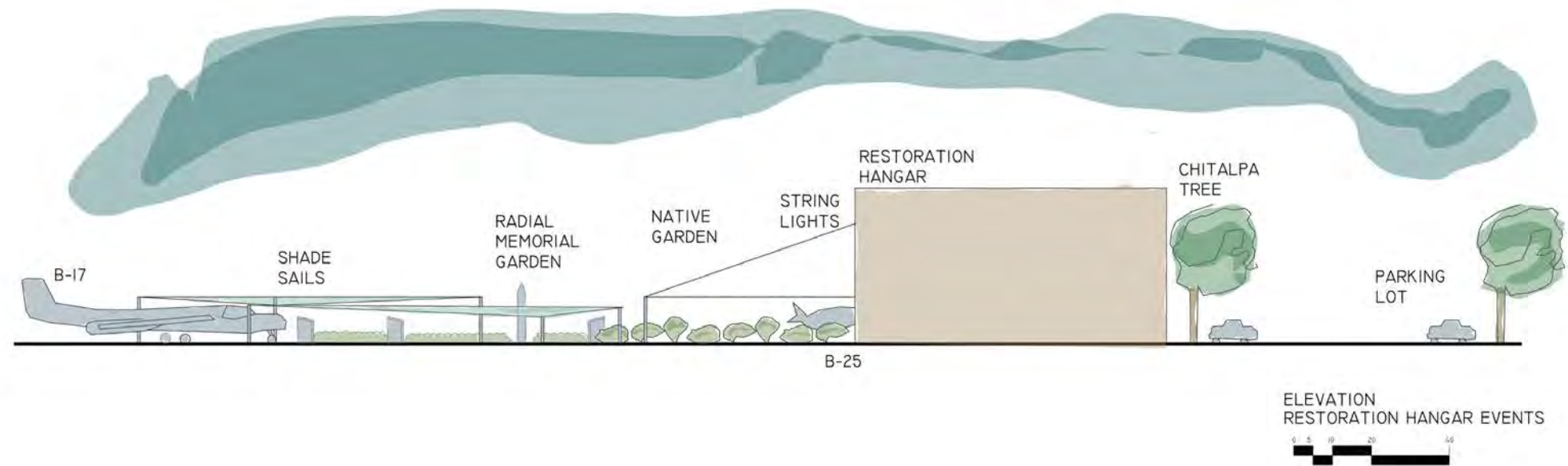
MARSH FIELD AIR MUSEUM
MASTER PLAN
DESIGN DEVELOPMENT

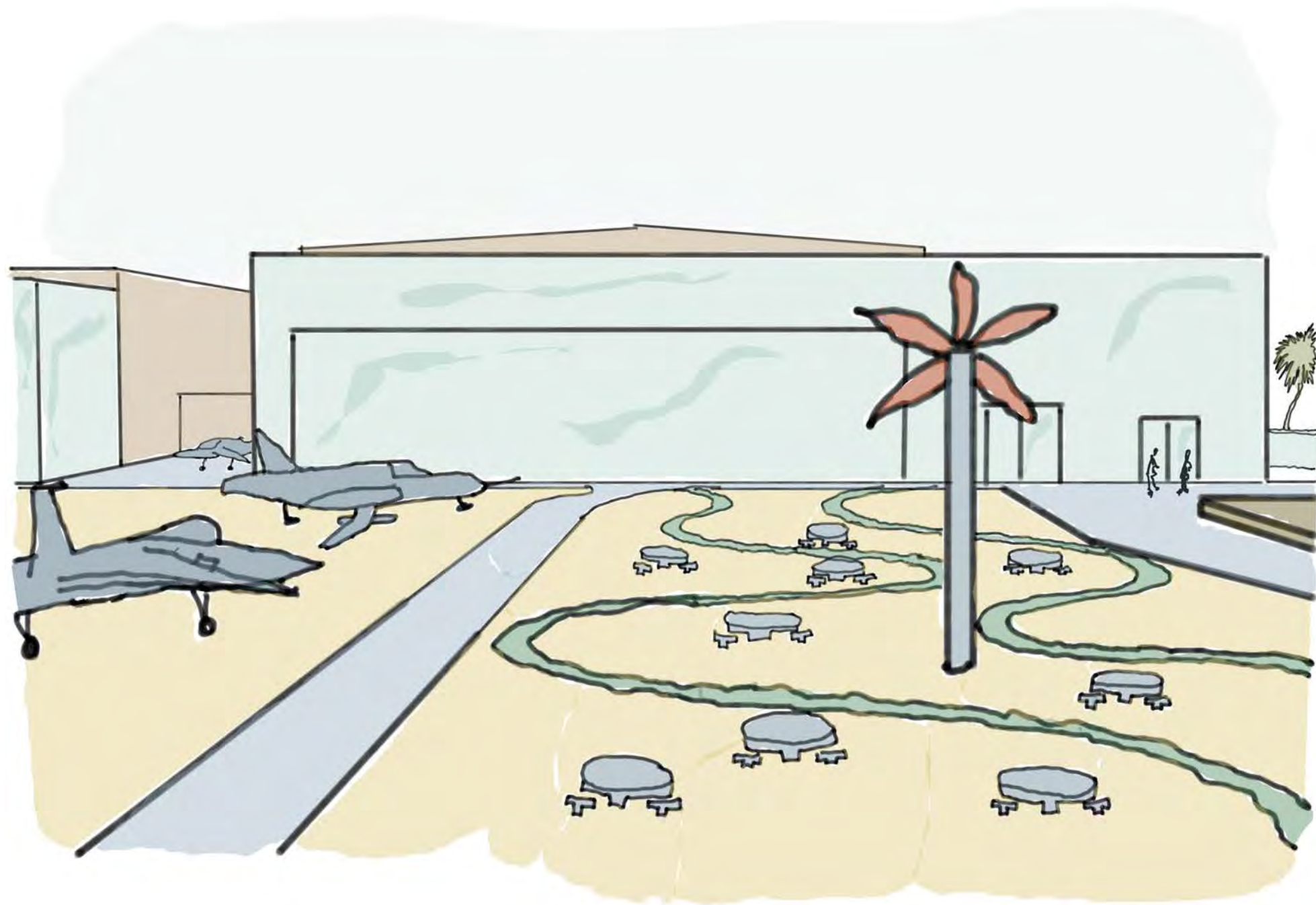
ELEVATION ENTRY WALK
WITH GLASS MEMORIAL WALL
TO GLASS ENTRY



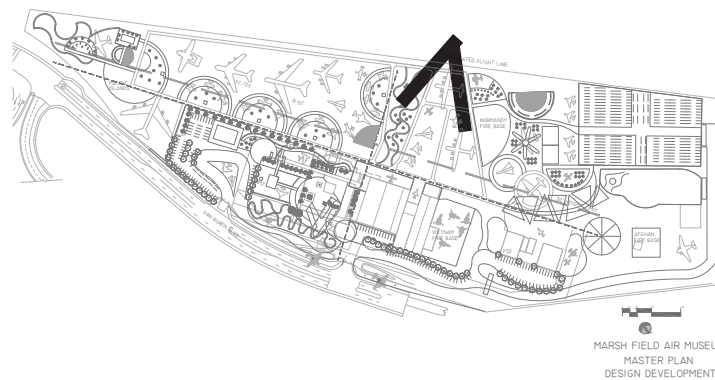
MARSH FIELD AIR MUSEUM
MASTER PLAN
DESIGN DEVELOPMENT

ELEVATION RESTORATION
HANGAR WITH EVENT SPACE





GLASS HANGER AND CENTRAL CONCORD WITH WINDMILL PERSPECTIVE



MARSH FIELD AIR MUSEUM
MASTER PLAN
DESIGN DEVELOPMENT