



Photo credit: <https://artlandscapedesign.studio/blog/travel-log-1/2018/7/16>

TONGVA PARK ANALYSIS

Garo Manjikian

Design Graphics Three

UCLA Extension

Spring Quarter, 2022

We do not “come into” this world; we come out of it, as leaves from a tree. As the ocean “waves,” the universe “peoples.” Every individual is an expression of the whole realm of nature, a unique action of the total universe.”

- Alan Wilson Watts

INTRODUCTION

This booklet contains graphic work completed in Design Graphics One, Two, and Three as part of the UCLA Extension Landscape Architecture Program. Tongva Park located in Santa Monica, CA served as the case study for all three classes. Mediums used include pencil, pen, markers, and digital enhancements with Photoshop.



Photo credit: <https://www.greenleeandassociates.com/tongva-park.html>

TABLE OF CONTENTS

LOCATION.....1

CONTEXT.....3

BLACK AND WHITE LAYOUT.....5

AERIAL.....6

CONCEPT.....7

SITE ANALYSIS

 Vehicular Circulation.....9

 Pedestrian Circulation.....11

 Access.....13

 Seating.....15

COLORLAYOUT.....17

PLAYGROUND AREA

 Enlargement.....19

 Section.....20

 Perspectives.....21

SOUTHERN QUADRANT

 Layout.....23

 Section, Perspective, and Photo Gallery.....24

PLANT PALETTE.....25

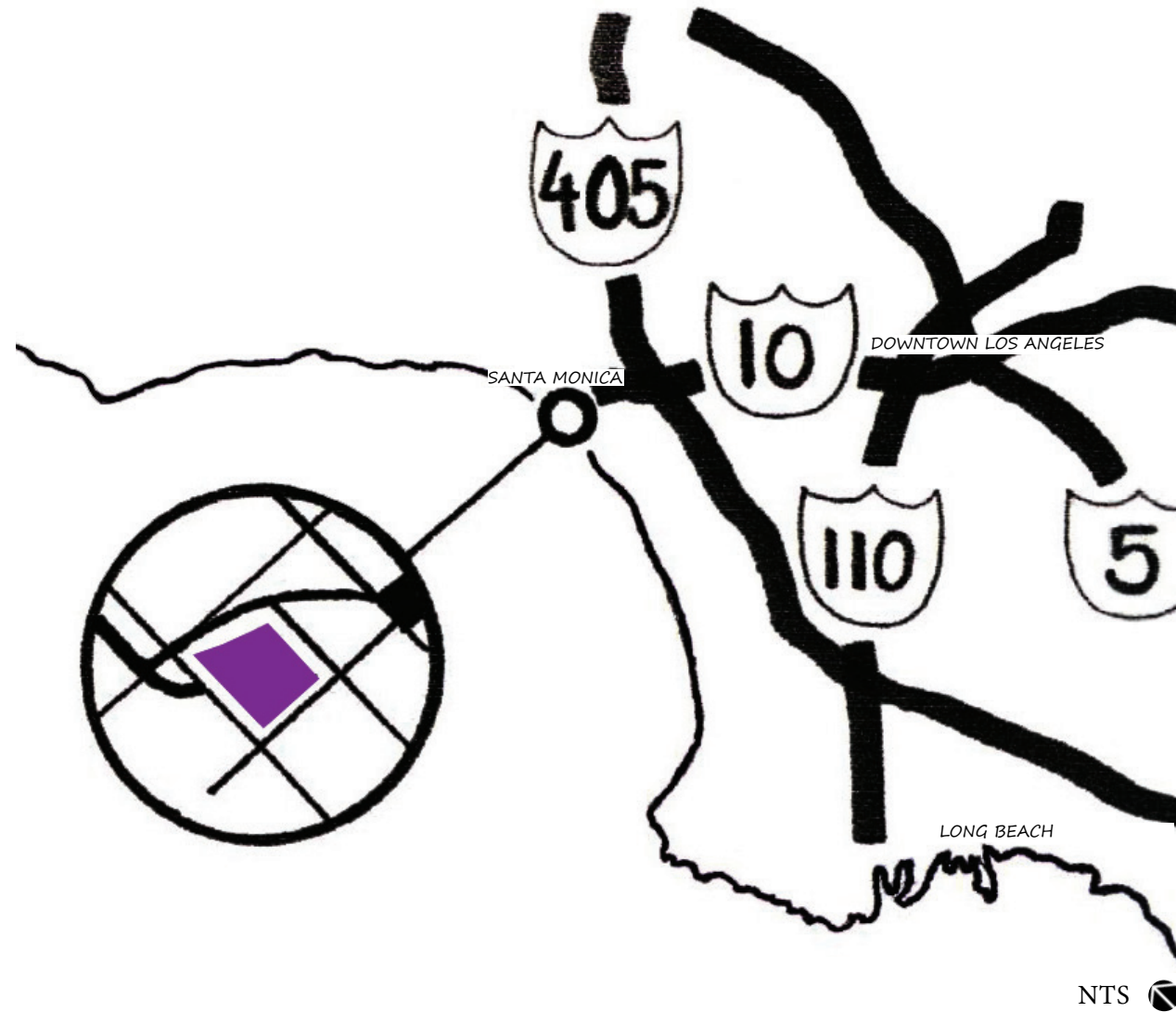
BIOGRAPHY.....28

ACKNOWLEDGMENTS.....30

LOCATION

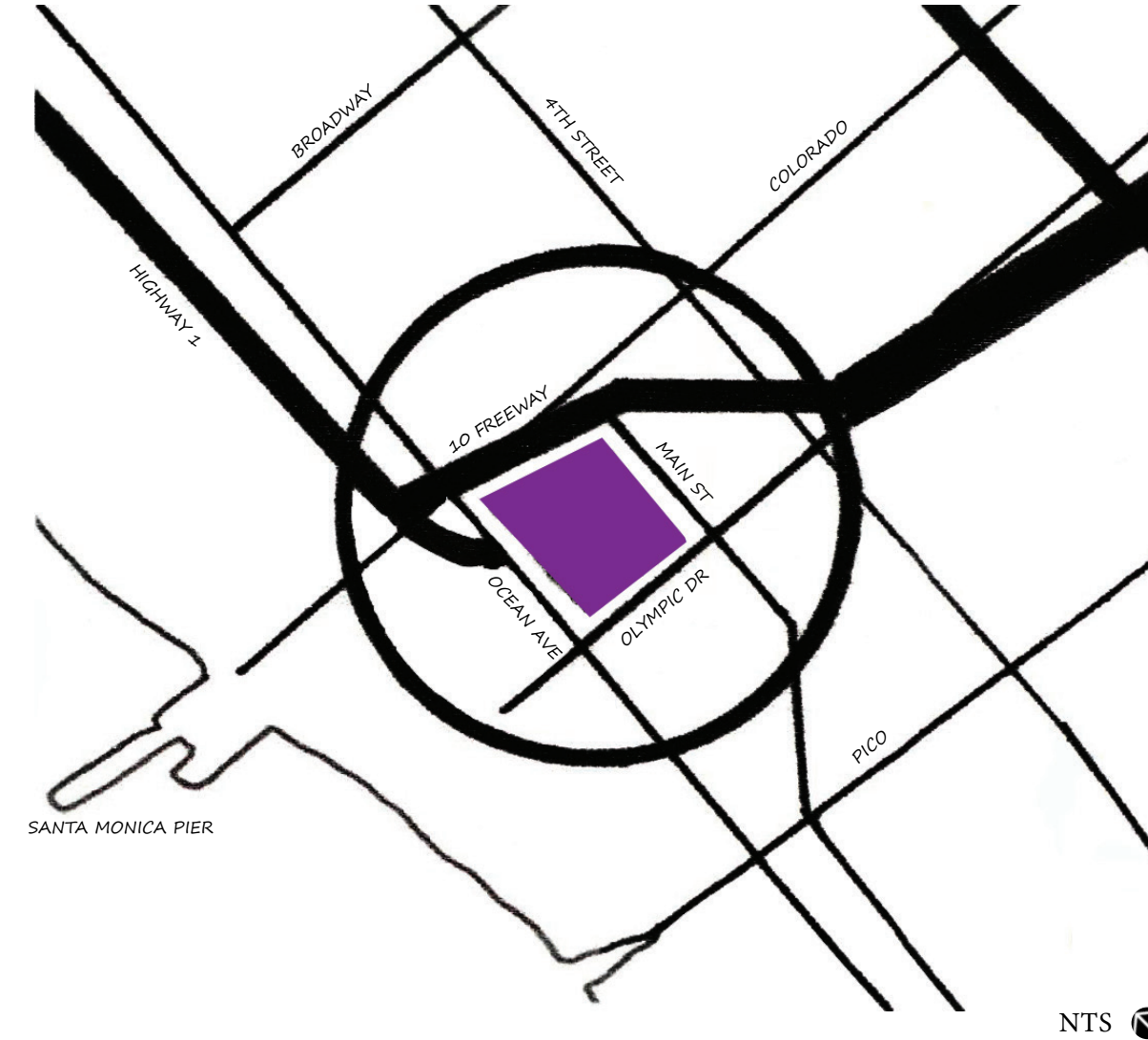
Tongva Park is location in Santa Monica, California which borders the Los Angeles neighborhoods of Pacific Palisades to the north and Venice to the south.

Santa Monica has a coastal Mediterranean climate. It enjoys an average of 310 days of sunshine a year. It is in USDA plant hardiness zone 11a. Because of its location, nestled on the vast and open Santa Monica Bay, morning fog is a common phenomenon in May, June, July and early August. (Source Wikipedia)

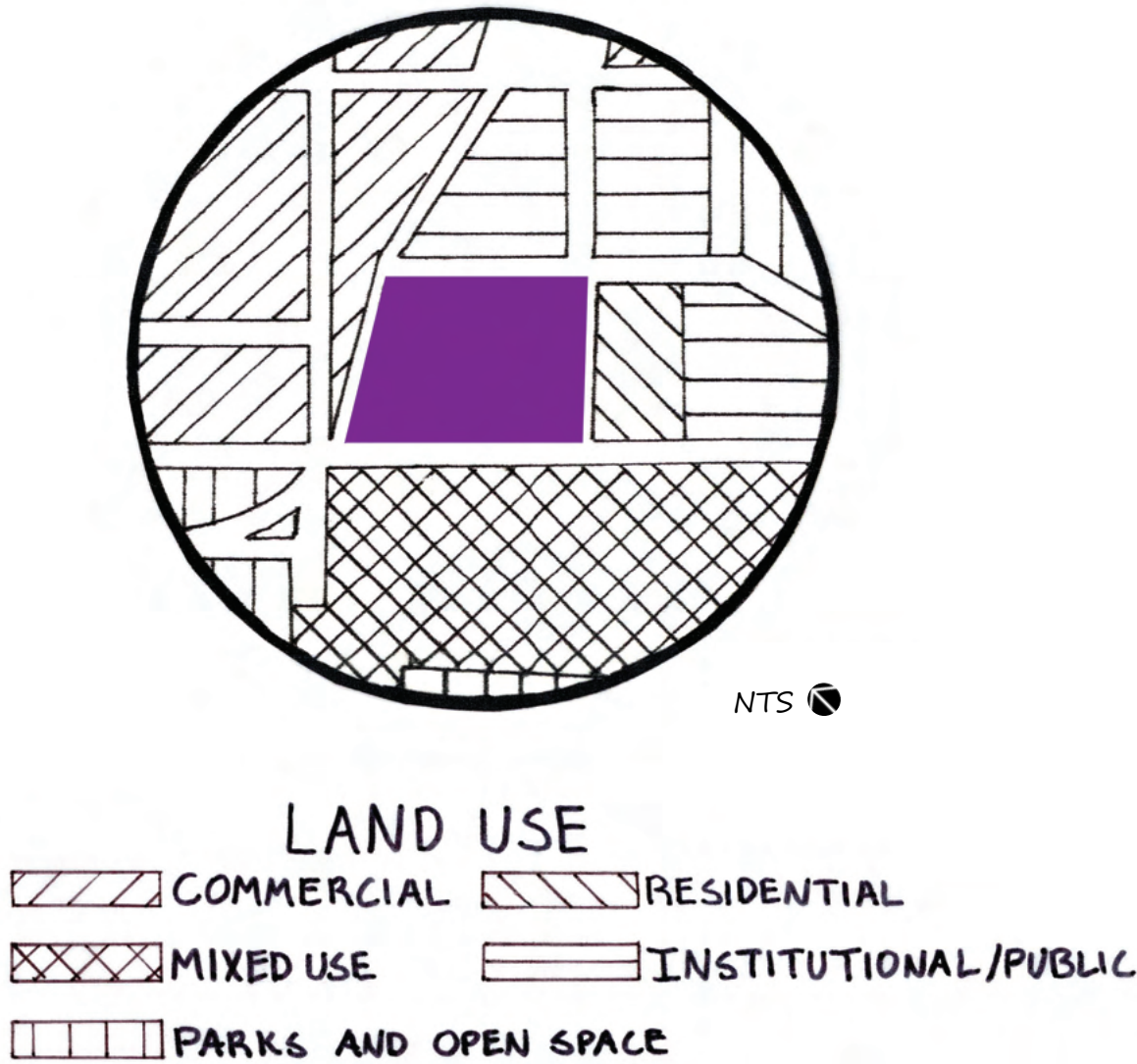


LOCATION

Tongva Park is walking distance from the Santa Monica Pier to the west and third street promenade to the North. It is surrounded by three fairly busy streets Ocean Ave, Olympic Drive, Main Street – and interstate 10 on the Northwest side.



The context map shown to the right is a simplified version of the land use designation map provided by the City of Santa Monica.



Institutional/Public Land - City Hall on Main St. Northeast side of park.



Mixed Use - Shops and apartment building on Ocean Ave. Southwest side of park.



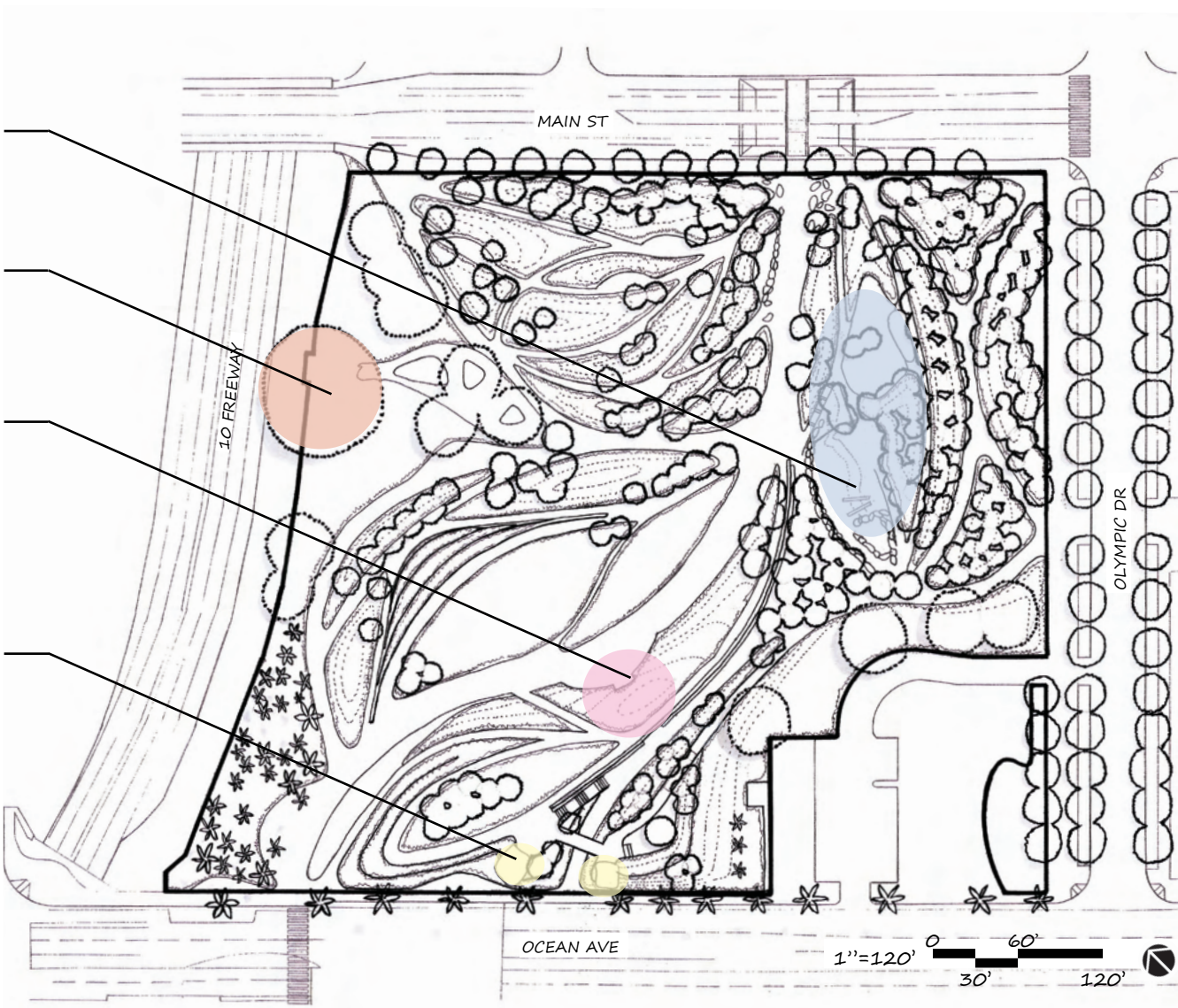
Residential - Apartment complex on Olympic Dr. Southwest side of park.

Playground

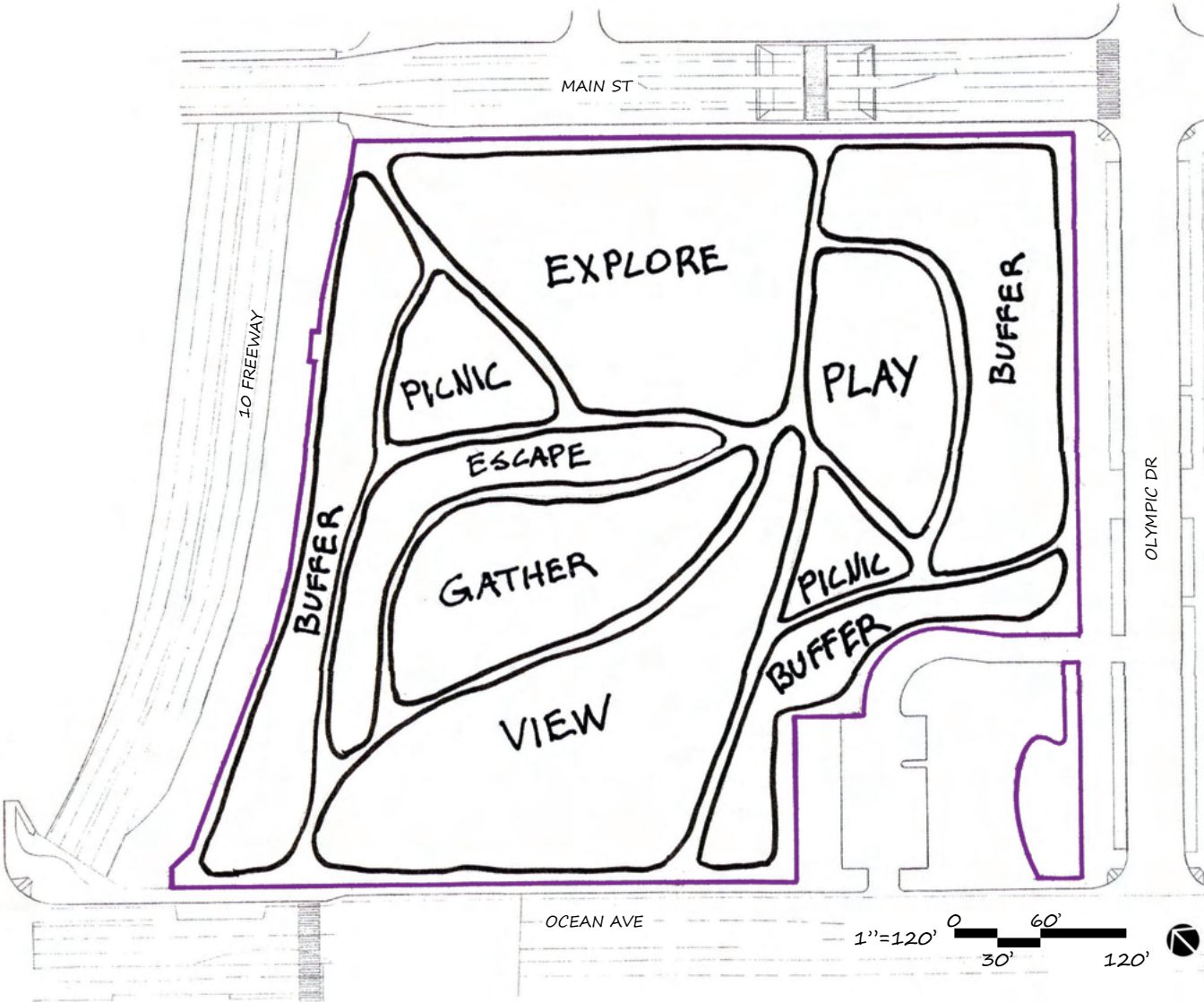
Moreton Bay Fig Tree

Restrooms

Overlooks



Tongva Park is loosely divided into various areas designed for specific activities. There are also several areas designed to buffer the users from the urban setting.



Explore



Play



Gather



Escape

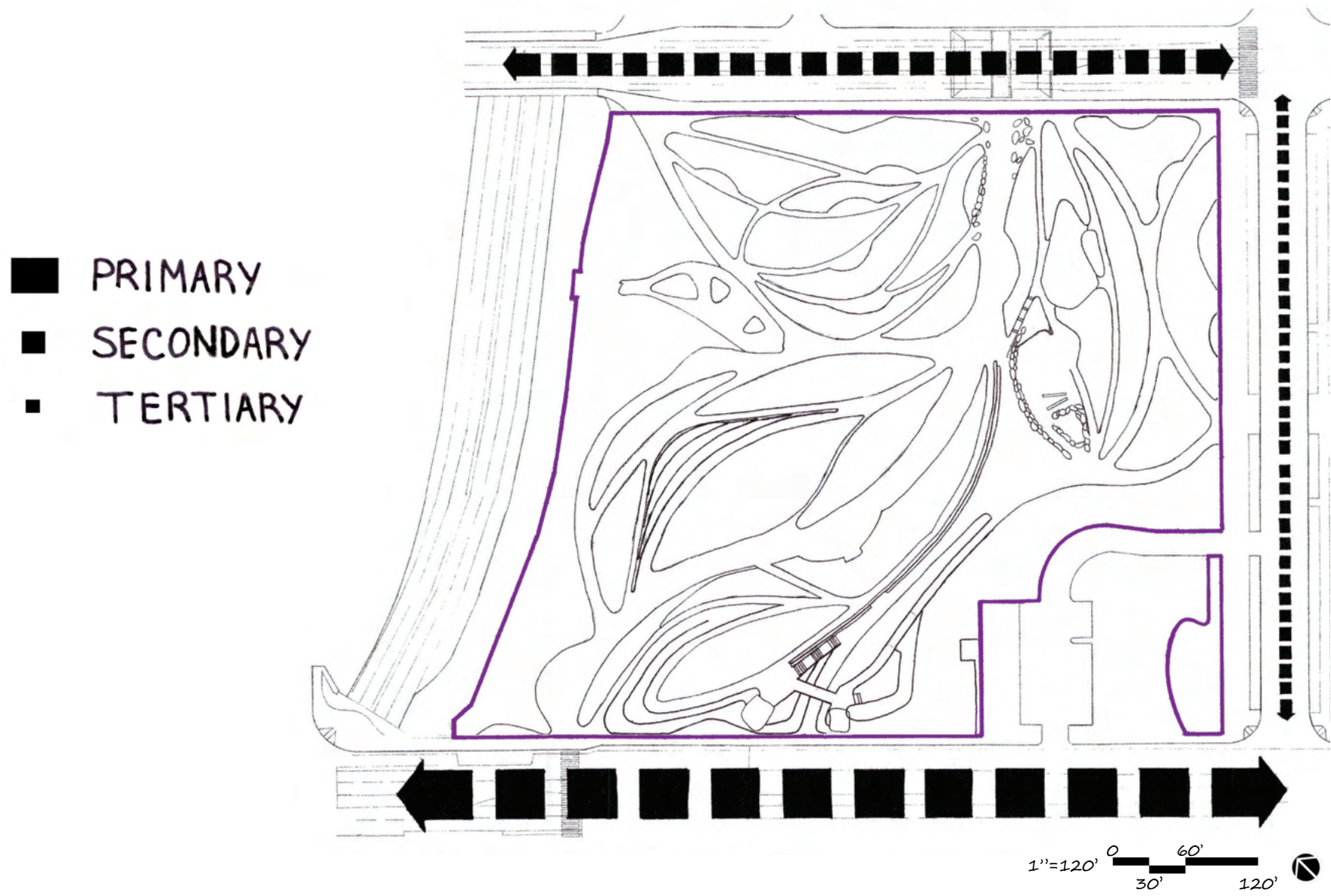


View



Buffer

VEHICULAR CIRCULATION



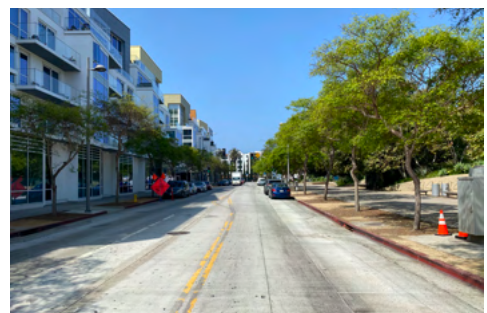
VEHICULAR CIRCULATION



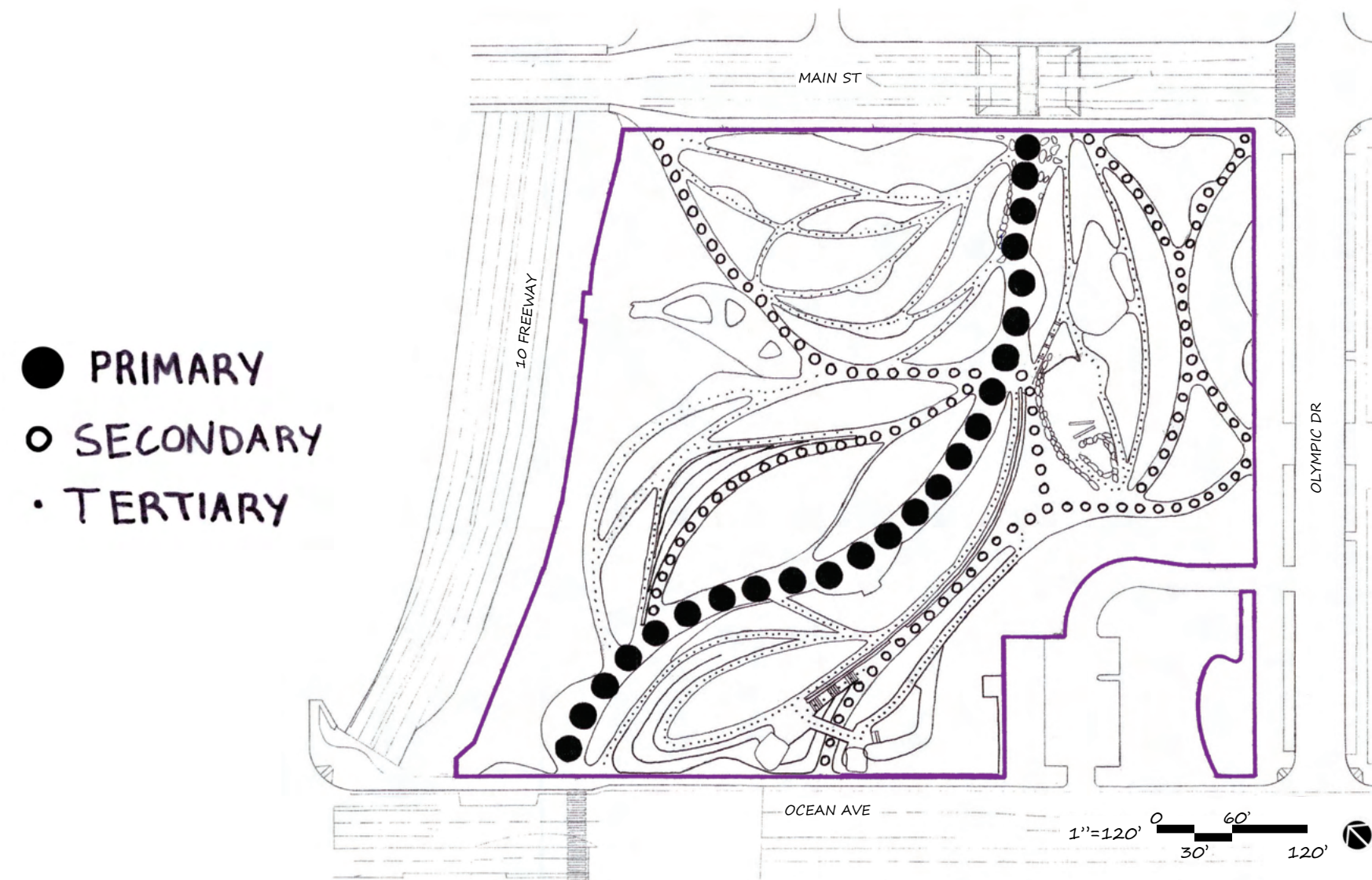
Primary - Ocean Ave, facing northwest



Secondary - Main St facing northwest

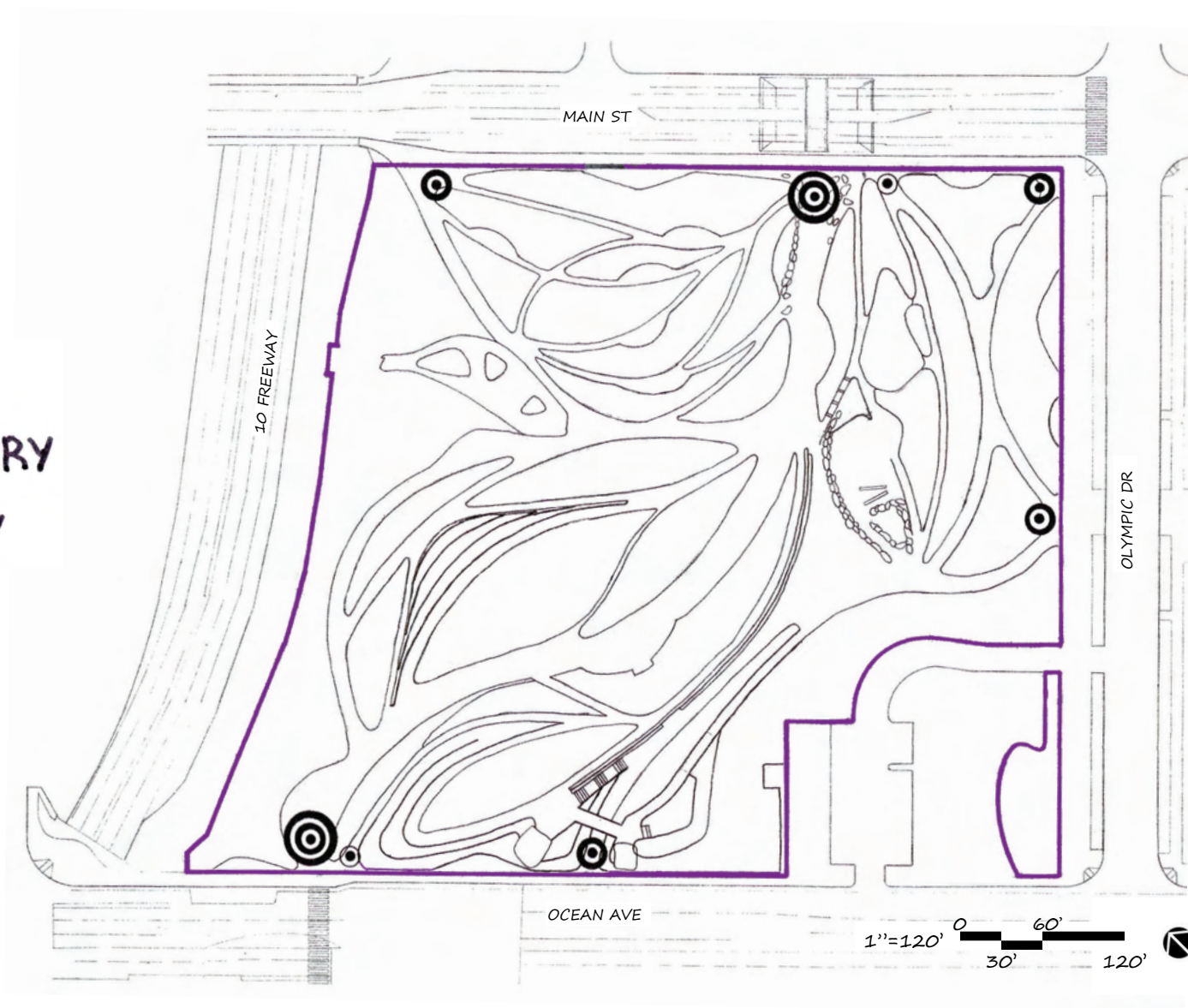


Tertiary - Olympic Dr, facing southwest



	Walkways	Paving Materials
Primary		
Secondary		
Tertiary		

- ◎ PRIMARY
- ◎ SECONDARY
- ◎ TERTIARY



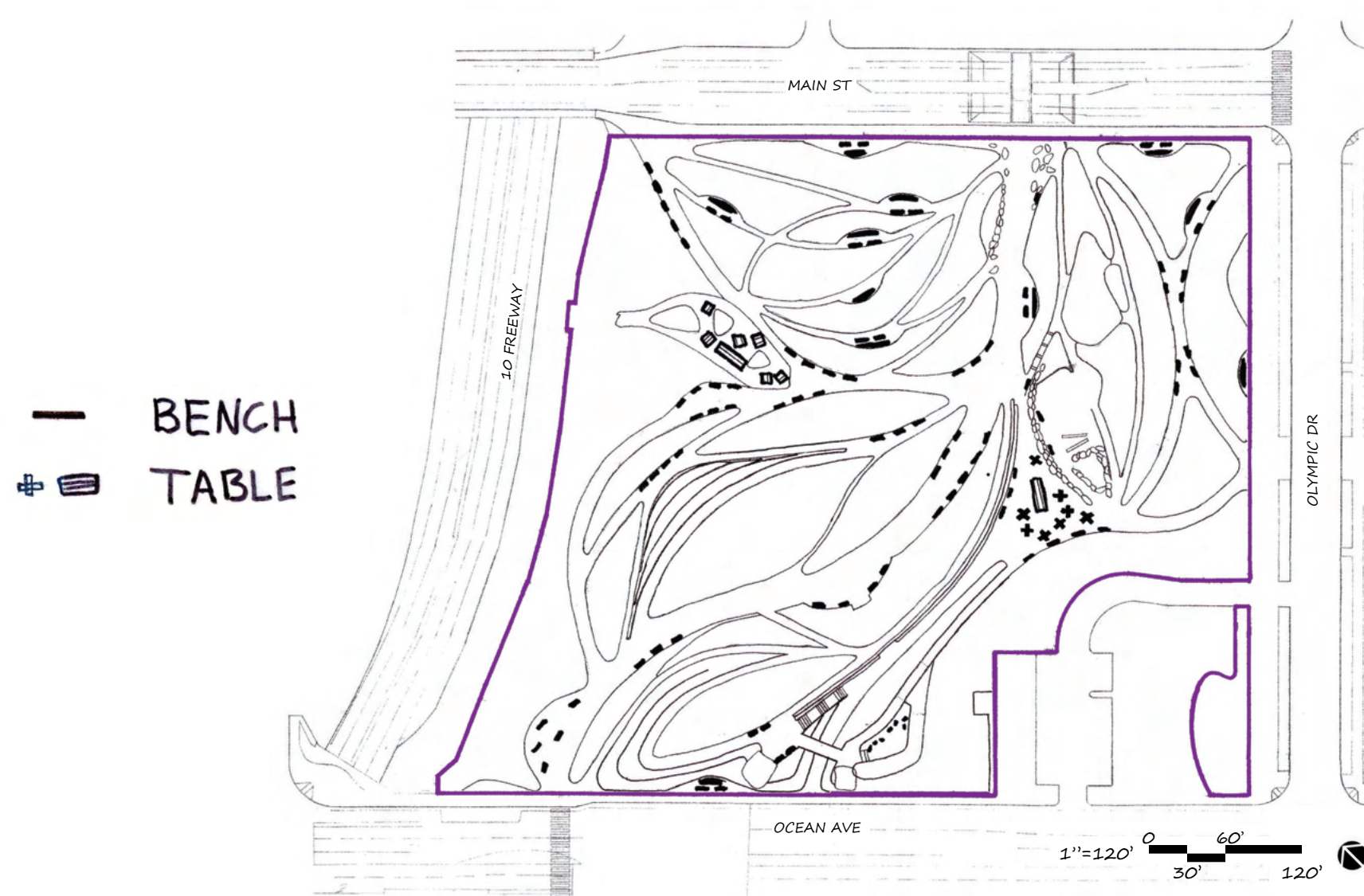
Primary - Access from Ocean Ave. One of two primary access points that connect through the primary circulation route in the middle of the park.



Secondary - Access from Main St. Serves as secondary access point but is a primary access point for residents in the apartment complex across the street.



Tertiary - additional access from Main St adjacent to primary point.



Benches

Seating Areas



Seating Materials



Tables



Amphitheater Seating





1. Playground



2. Picnic Area One



3. Picnic Area Two



4. Restrooms

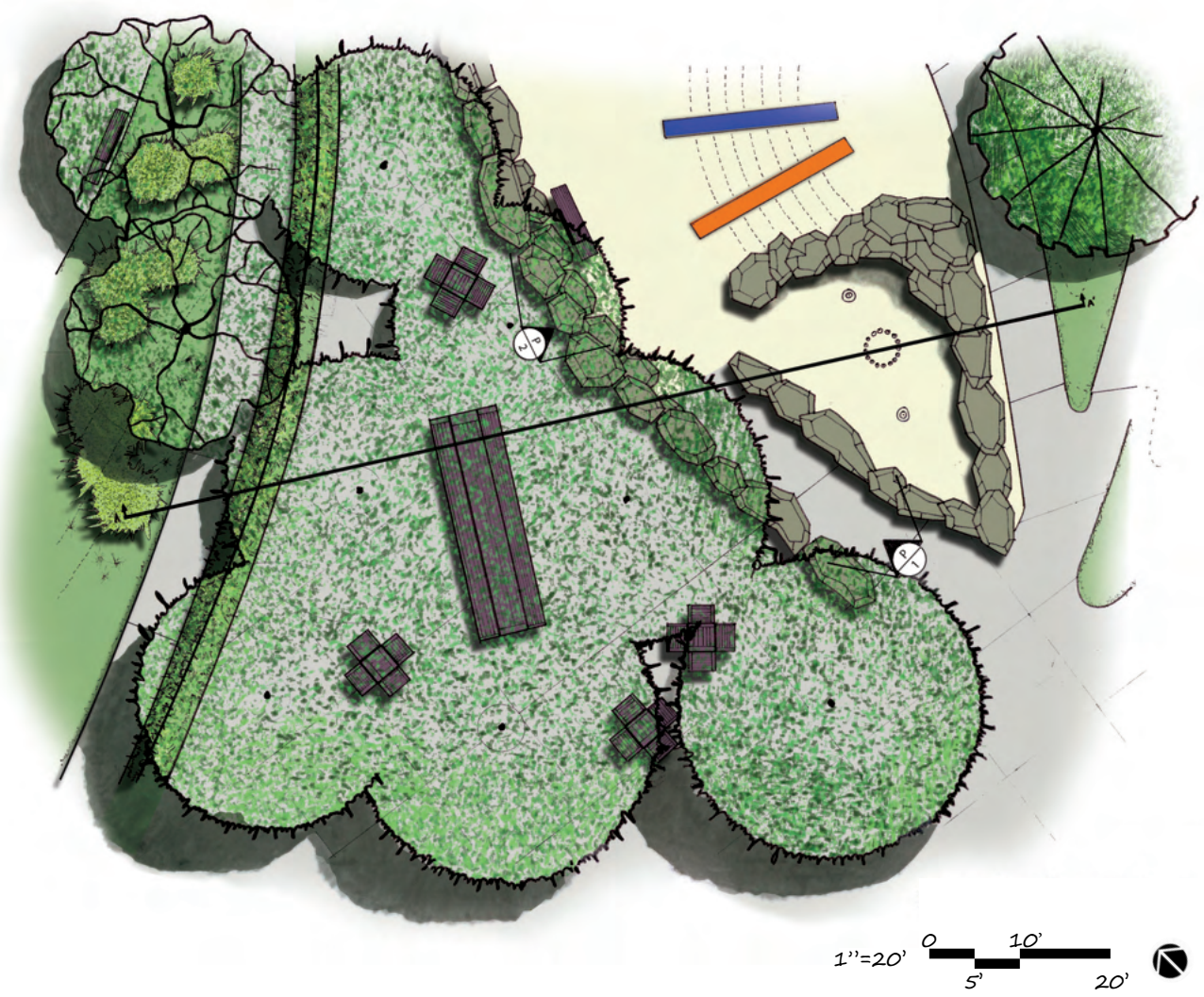


5. Lookout

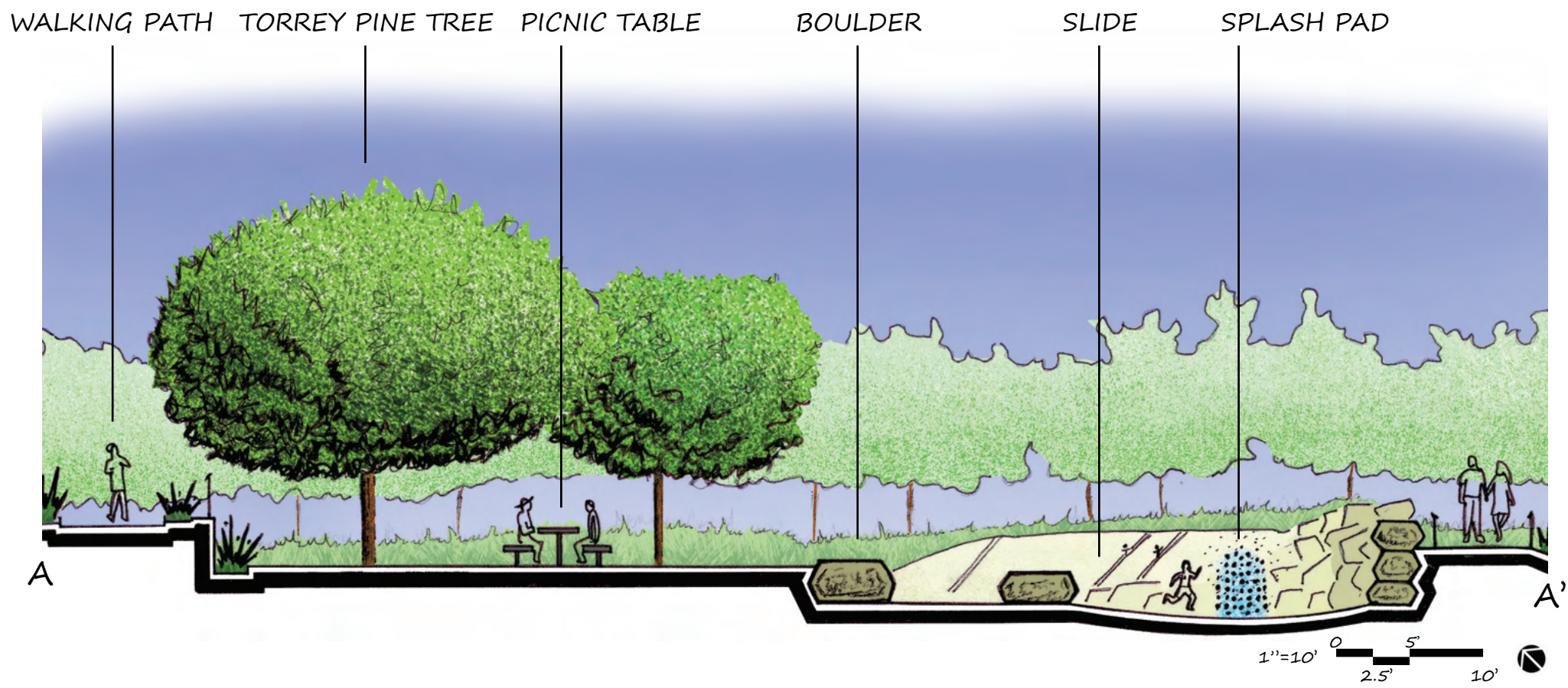


6. Fountain

PLAYGROUND AREA - ENLARGEMENT



PLAYGROUND AREA - SECTION





Playground with Boulders



Boulder Border



Group Picnic Tables



Pathway into Playground Area



Slides



Splash-pad

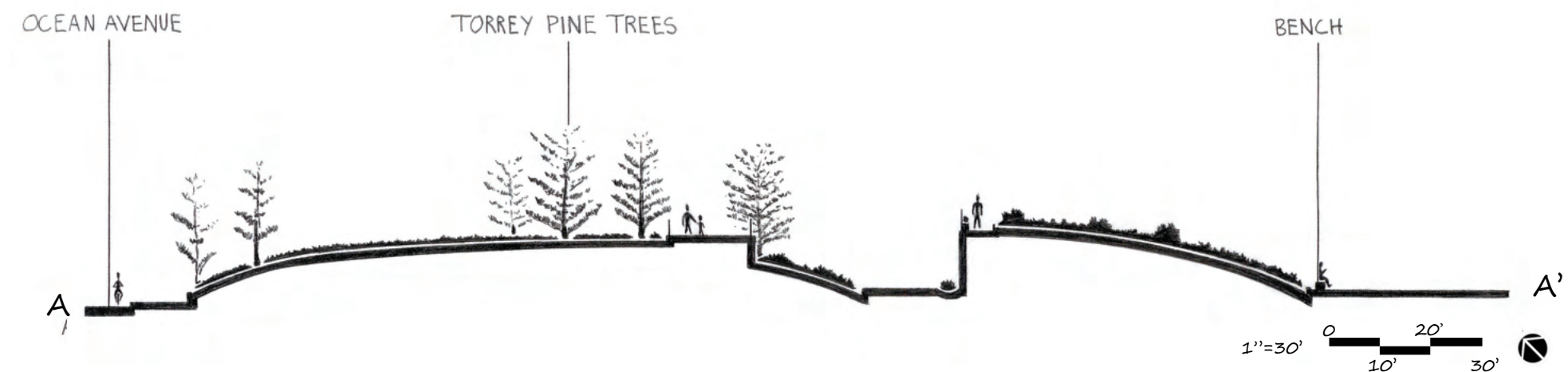
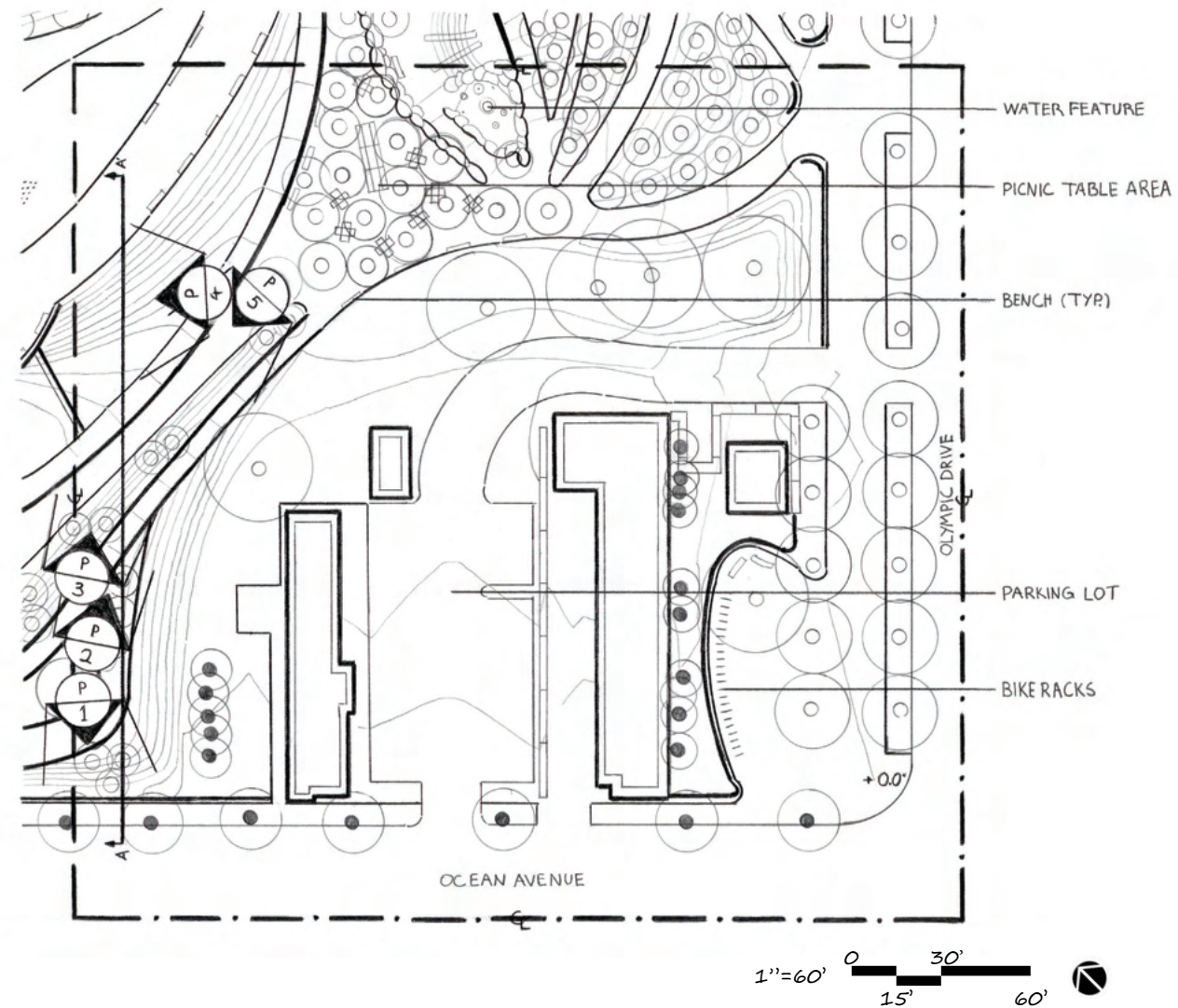


Play Structure



Playground with Splash Pad

- STUDY BOUNDARY
- MATCH LINE
- PEDESTRIAN CIRCULATION
- VEHICULAR CIRCULATION
- BUILDING
- RETAINING WALL
- FENCE
- TREE
- PALM TREE
- CONTOUR INTERVAL=1'



PLANTING PALETTE

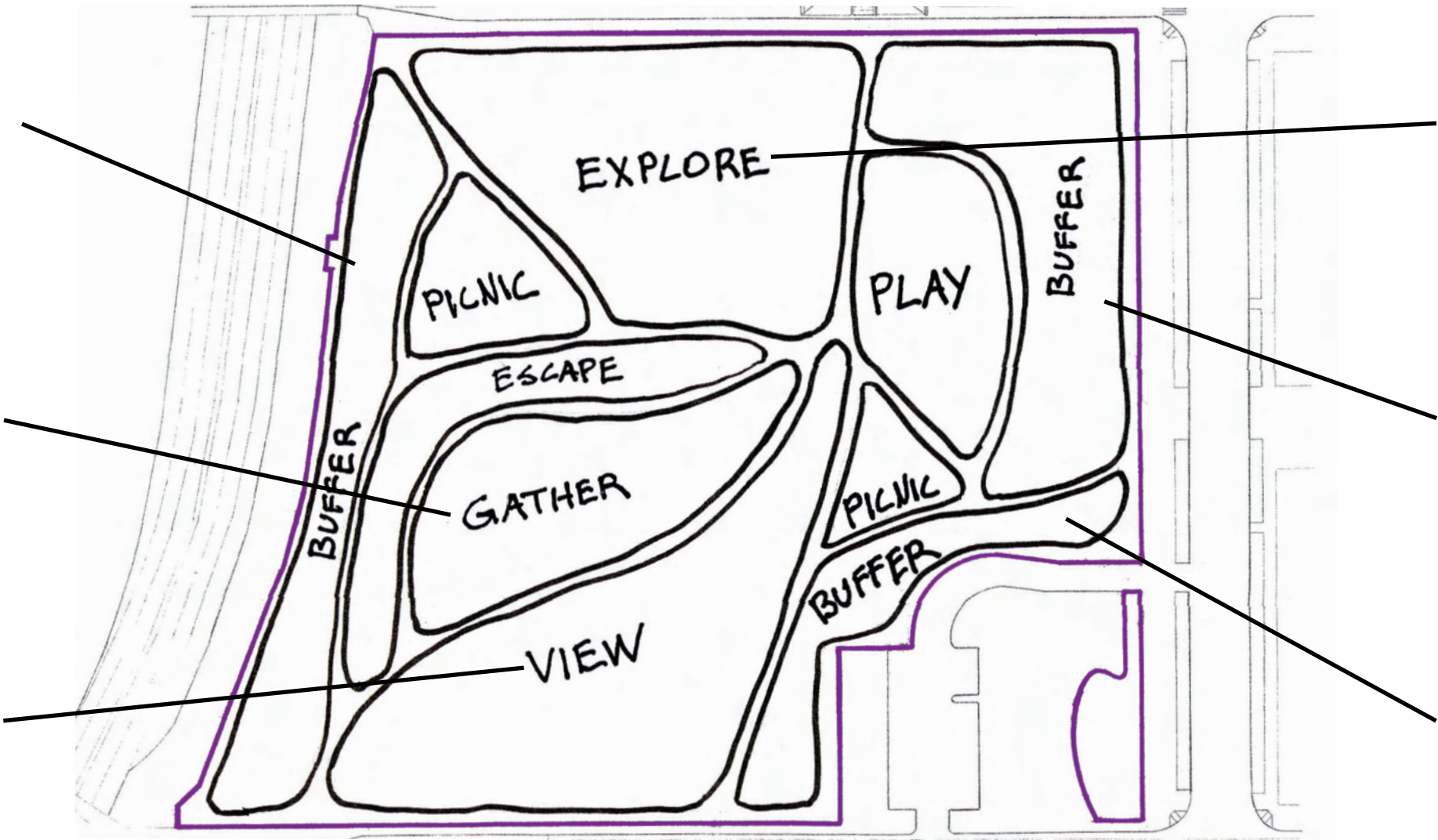
- Moreton Fig Tree
- Grass



- Magnolia Tree
- Grass



- Torrey Pine Tree
- Agave
- Sedge



NTS

PLANTING PALETTE

- Indian Coral Tree
- White Sage
- Sedge



- Olive Tree
- Sycamore Tree
- Lily
- Sedge



- Weeping Fig
- Yucca
- Sedge
- Dracaena



Garo Manjikian was born in Pasadena, California. Growing up in the Armenian Community with a Grandfather who survived the Armenian Genocide instilled a duty to fight for truth and justice at an early age.

Garó's passion for making a difference expanded to include environmental issues, education, democracy and more. His first job out of UC Davis was as a student organizer where he successfully led efforts to get the entire UC System to commit to climate neutrality. Since then, he has worked as an advocate, lobbyist, organizer, and fundraiser, for several non-profit organizations. He also served as a communications director for a State Assemblymember where he led efforts to push for sustainable transportation at local, regional, and state levels. He advanced several significant state legislative victories on climate change, public health, transportation, education, and equity.

Garó currently consults for private clients while enrolled in the UCLA Landscape Architecture Program. He aims to create spaces that connect people with nature and themselves.



This booklet would not be possible without the instruction and guidance of David Squires, Rebecca Schwaner, and Laura Razzo. Thank you for providing me with the skills, tools, and confidence to succeed in the Design Graphics series and helping me to pursue a career in Landscape Architecture.

Thank you to my UCLA Extension classmates for your support and motivation in our shared journey.

Thank you to my wife, Cassie Manjikian, for supporting me in my career change and for taking on the nighttime parenting duties for our three little ones during class!

