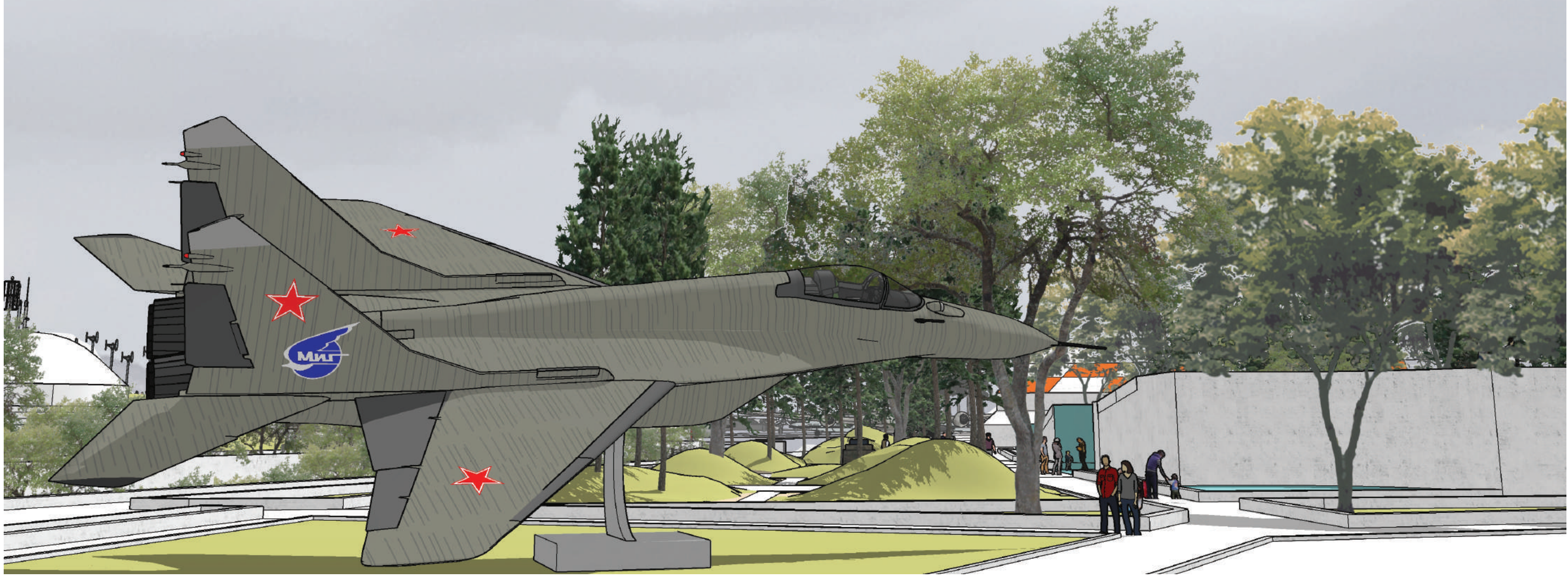


MARCH FIELD AIR MUSEUM

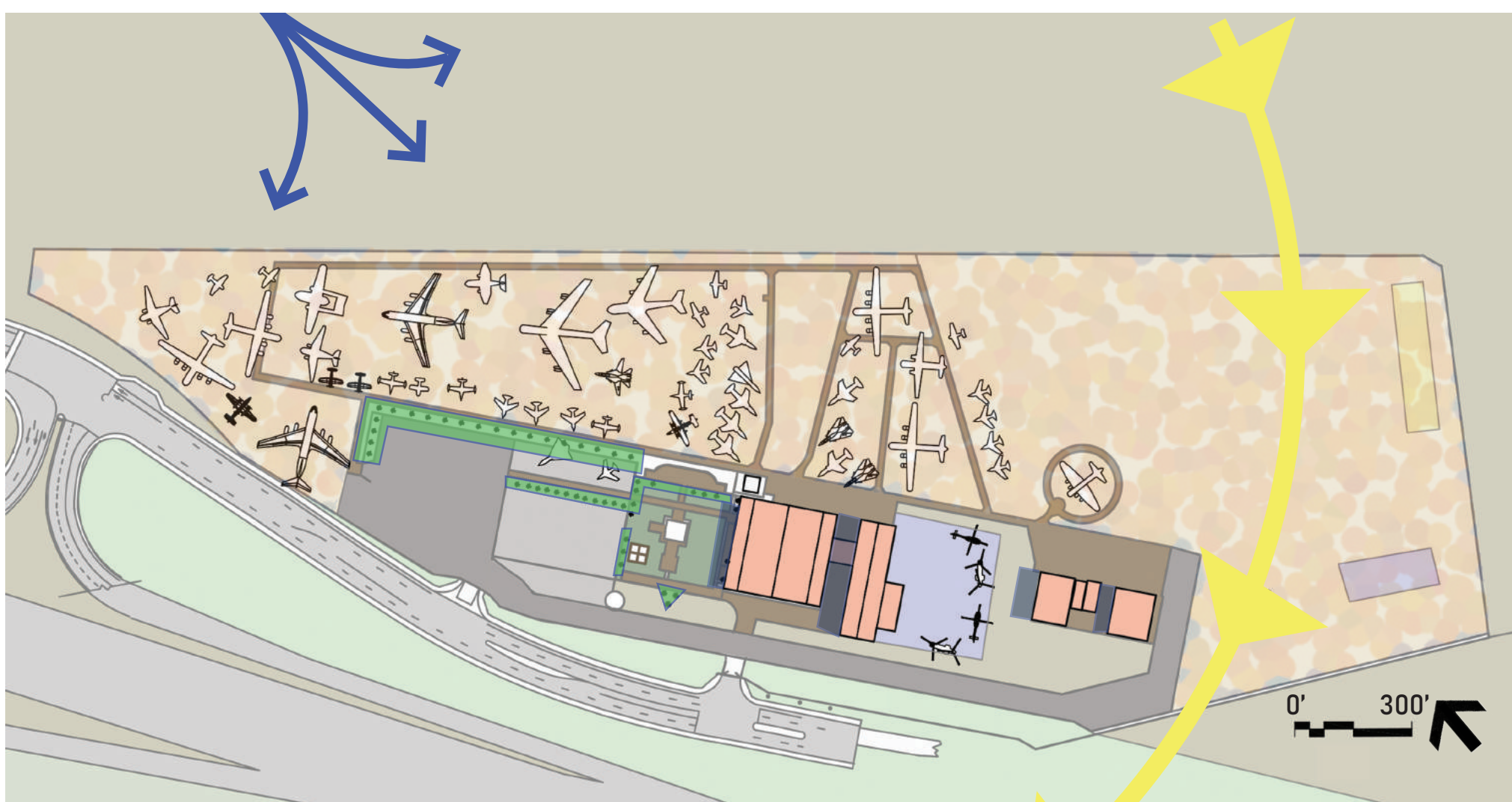
Walker Young
Landscape Design 7
UCLA Extension Landscape Architecture



SITE

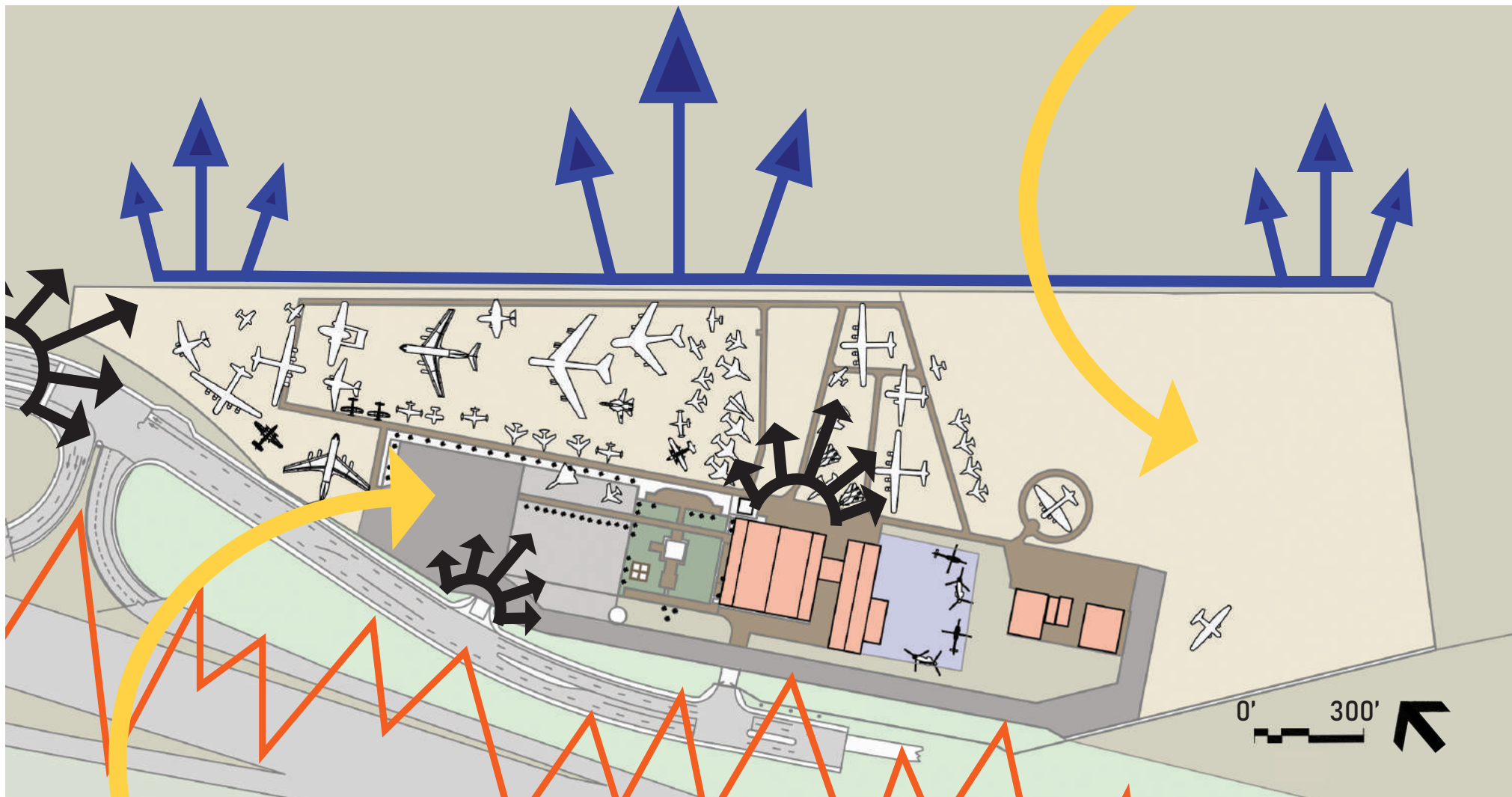
MARCH FIELD AIR MUSEUM
Riverside, CA

- 34 Acres
- Zone 18 Interior Climate
- Established 1917
- Collection of historical aircraft, military memorabilia, memorial gardens

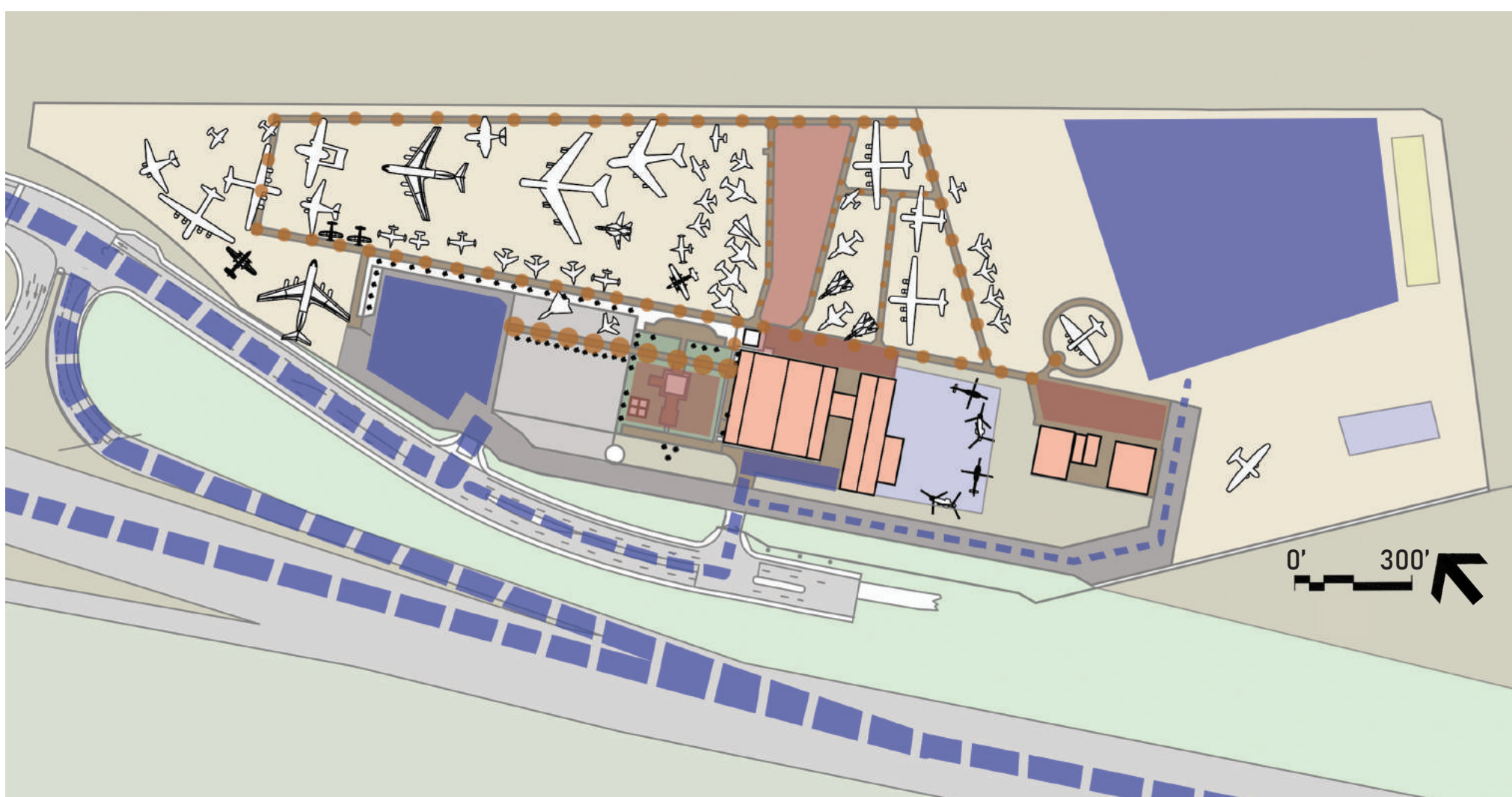


ANALYSIS

- High Wind Direction
- Sun Path
- Open unused areas
- Hot, Unshaded, Flat Terrain



- Views to Mountains
- Thresholds/ views into site
- Connection to adjacencies
- Noise from freeway



- Vehicular Circulation
- Pedestrian Circulation
- Parking
- Gathering Areas

PROJECT STATEMENT

The March Field Air Museum Project is a reimagining of the sites potential both within the site boundaries and in the greater region. The development of a conceptual Master Plan will focus on creating flexible use areas, generating more revenue, increased experience for all ages, interactive education, and diversifying program elements.

PROJECT GOALS

- Celebrate Military and Aviation History
- Create a unique, interactive, and comfortable user experience
- Activate the entire site

PROJECT OBJECTIVES

- Memorial Garden, Firebases, Celebration of important people and events
- Grande Entry, Topography, Sun/Shade, Amenities, Display
- Flexible use Areas, Art, Program Elements, Design Layout

HISTORY



EXPERIENCE

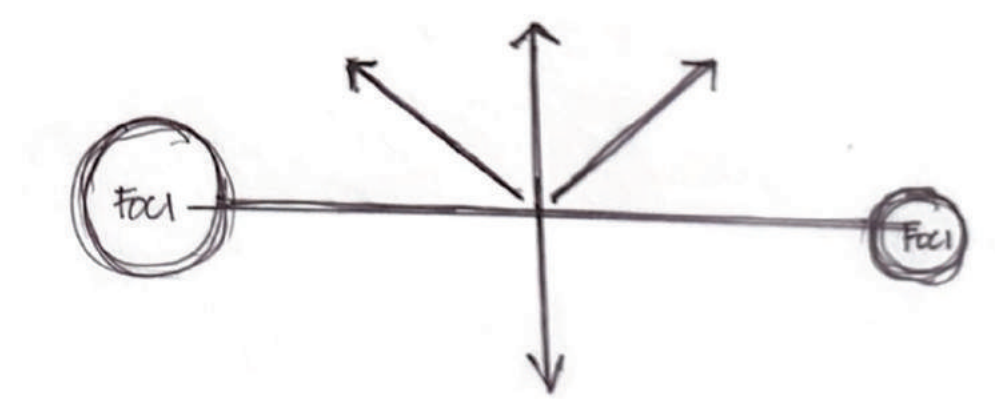


ACTIVATE



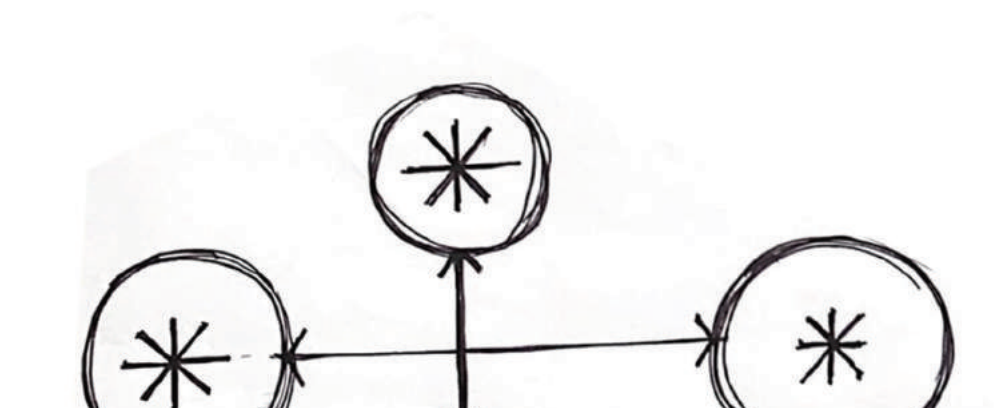
CONCEPT/ PARTI

AIRFORCE STAR INTO WING
Inspired originally by the Airforce five pointed star this design transformed and pulled in elements of the Airforce Wings and Jupiters Lightning, symbology from the Air Force insignia.



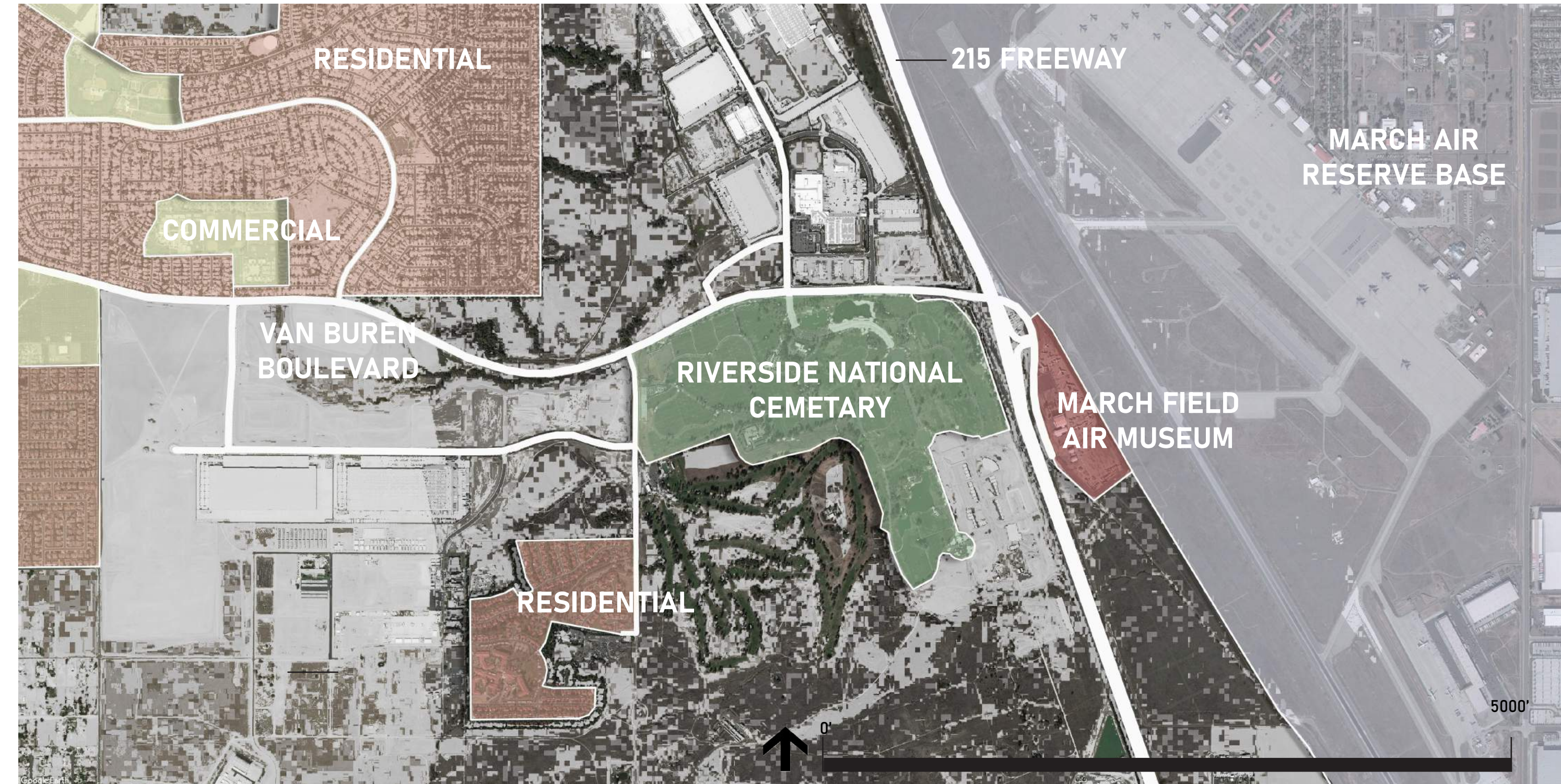
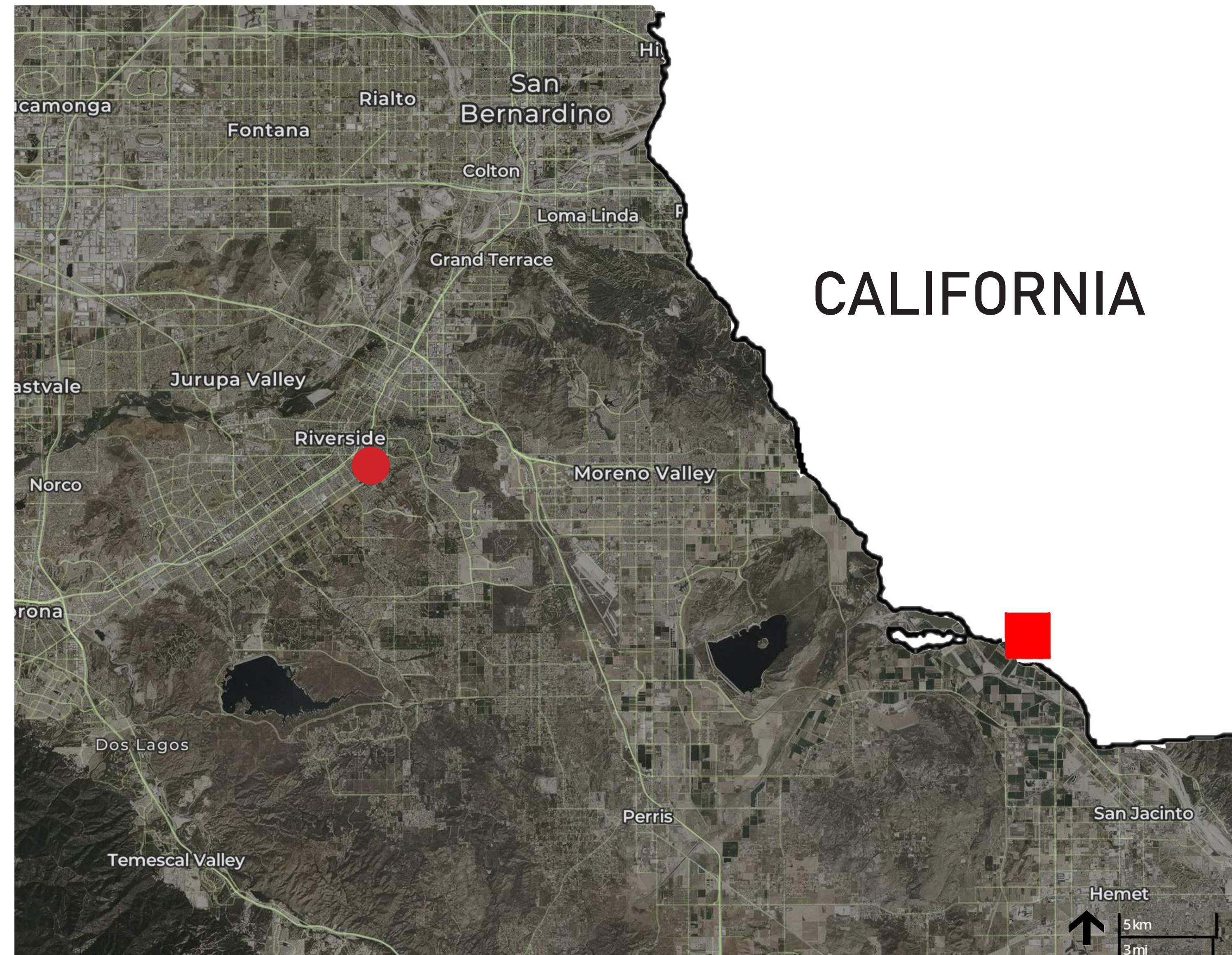
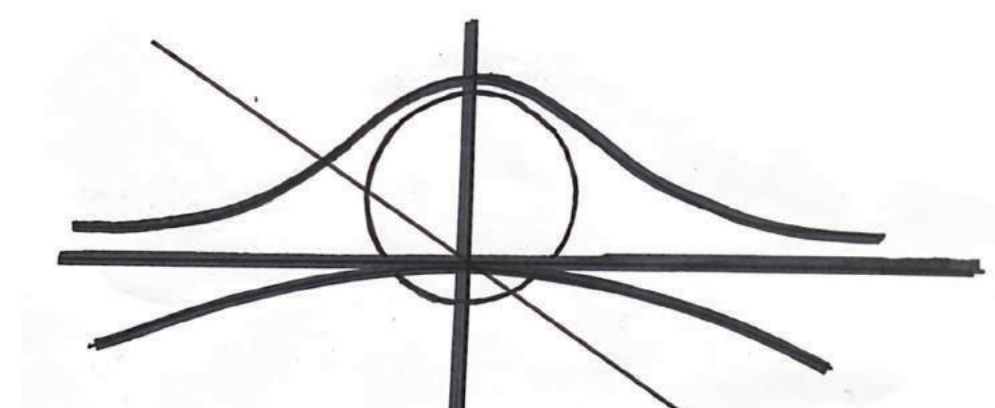
STRONG CROSS AXIS

This design uses the existing Northwest/ Southeast pathway and creates a Northeast/ Southwest axis off the hangar doors.



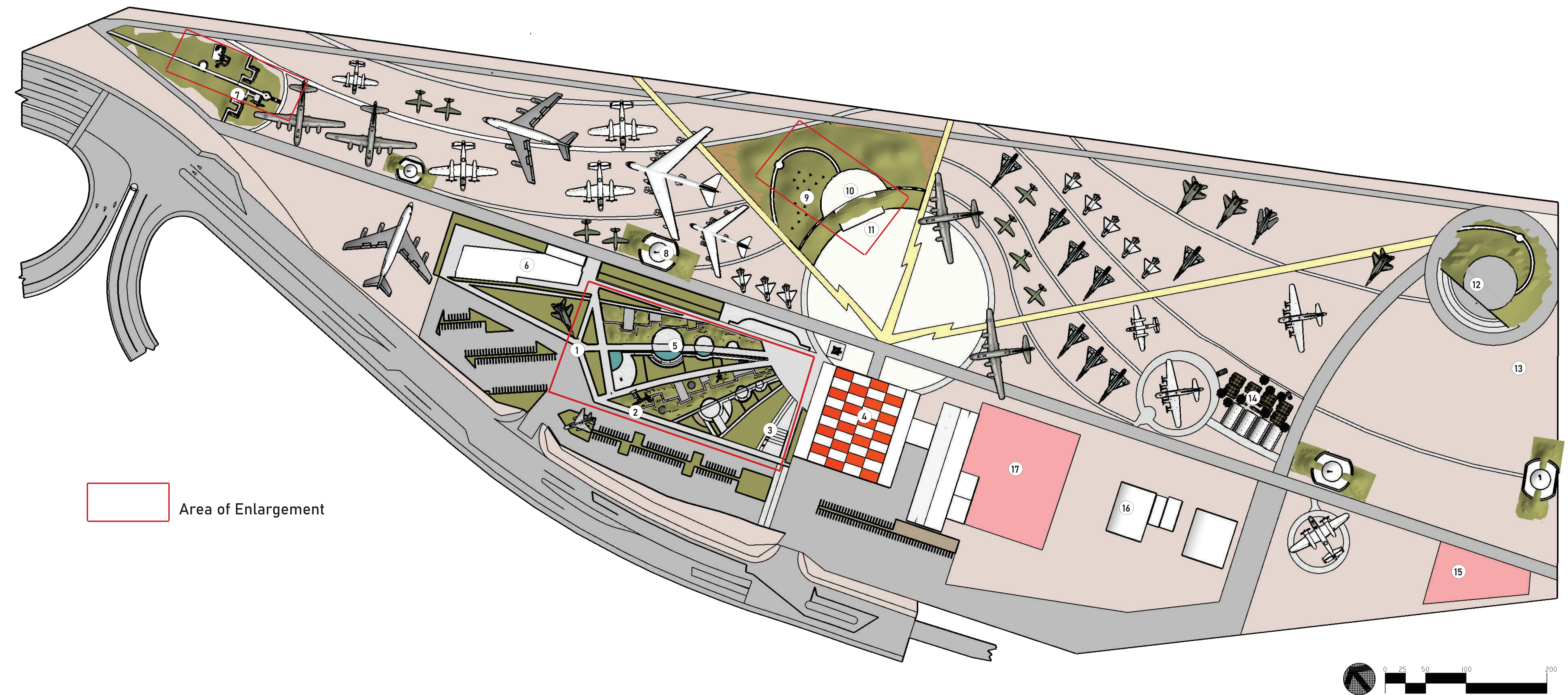
AEROFOIL LIFT AND DRAG

Inspired by the shape of the air pattern over the aerofoil I created a parti that changed the cross section of the wing to a circle. This created more symmetry on the NE/ SW axis and allowed for strong primary pathways across the site to the edges of the airfield.



MASTER PLAN

March Field Air Museum



1. Grand Memorial Garden Entry/ Arrival
2. The War is Over Forest Walk
3. Rose Garden and Ampitheatre
4. March Field Air Museum Building
5. Memorial Garden Statuary / Water Meditation
6. Restaurant
7. WW1 - Trench Warfare
8. Bunker Tram Stop
9. Kinetic Wind Sculpture Garden

10. "Hap" Arnold Pavilion
11. Jupiter Stage
12. Boneyard Bunker
13. Boneyard/ Overflow Parking
14. WW2 Fire Base - South Pacific Theatre
15. Afghanistan Fire Base
16. Radio Museum/ Command Center
17. Vietnam Fire Base

MEMORIAL GARDEN

March Field Air Museum

