

# MARCH FIELD AIR MUSEUM

## Master Plan Riverside, California

### PROJECT STATEMENT

- To **Enhance** the Visitor's Experience, Awareness, and Understanding of the Significant History and Importance of the Site itself, as well as the Air Force's Vital Role in our Country's Defenses
- To **Develop** a Master Plan as a Graphic Example of the Vision of the Museum for Future Implementation of the Master Plans, as well as Enhance Funding Opportunities for Future Projects
- To **Solve** Site Planning and Program Challenges with a Master Plan that Meets the Needs for Attracting Visitors of All Ages

### PROJECT GOALS

- Attract** visitors of all ages
- Create** flexible exhibit and event space
- Increase** shade opportunities
- Design** interactive and interesting exhibits
- Use** climate-adapt plants

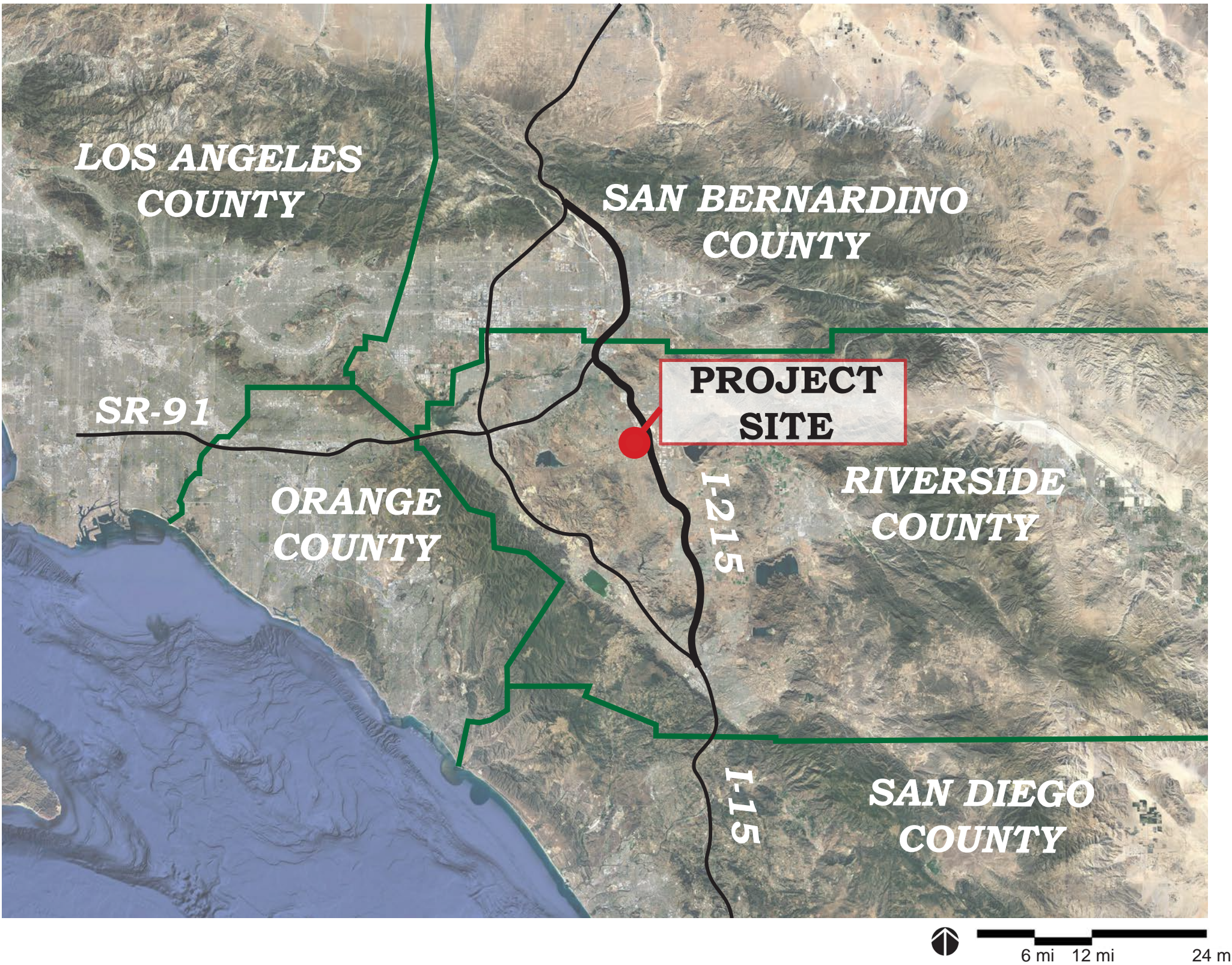
### PROGRAM

- 2 Fire Bases
- Expansion of Heritage Courtyard
- Grand Mall
- Dedication Space for 5 Star Gen. Hap Arnold
- Overflow Parking Adaptive Reuse
- Existing Parking Lot Redesign
- Formal Viewing Area for Air Shows
- Shaded Viewing Area for Exhibits
- Grand Entrance
- Use of Sustainable Materials

### OBJECTIVES

- To **Honor** and Remember Veterans
- To **Design** Reflective Spaces
- To **Provide** Close Contact
- To **Educate** the Public and Stimulate Memories of Veterans
- To **Inspire** Exploration and Evoke Remembrance
- To **Create** an Experience and Journey with Intimacy and Accuracy Like No Other

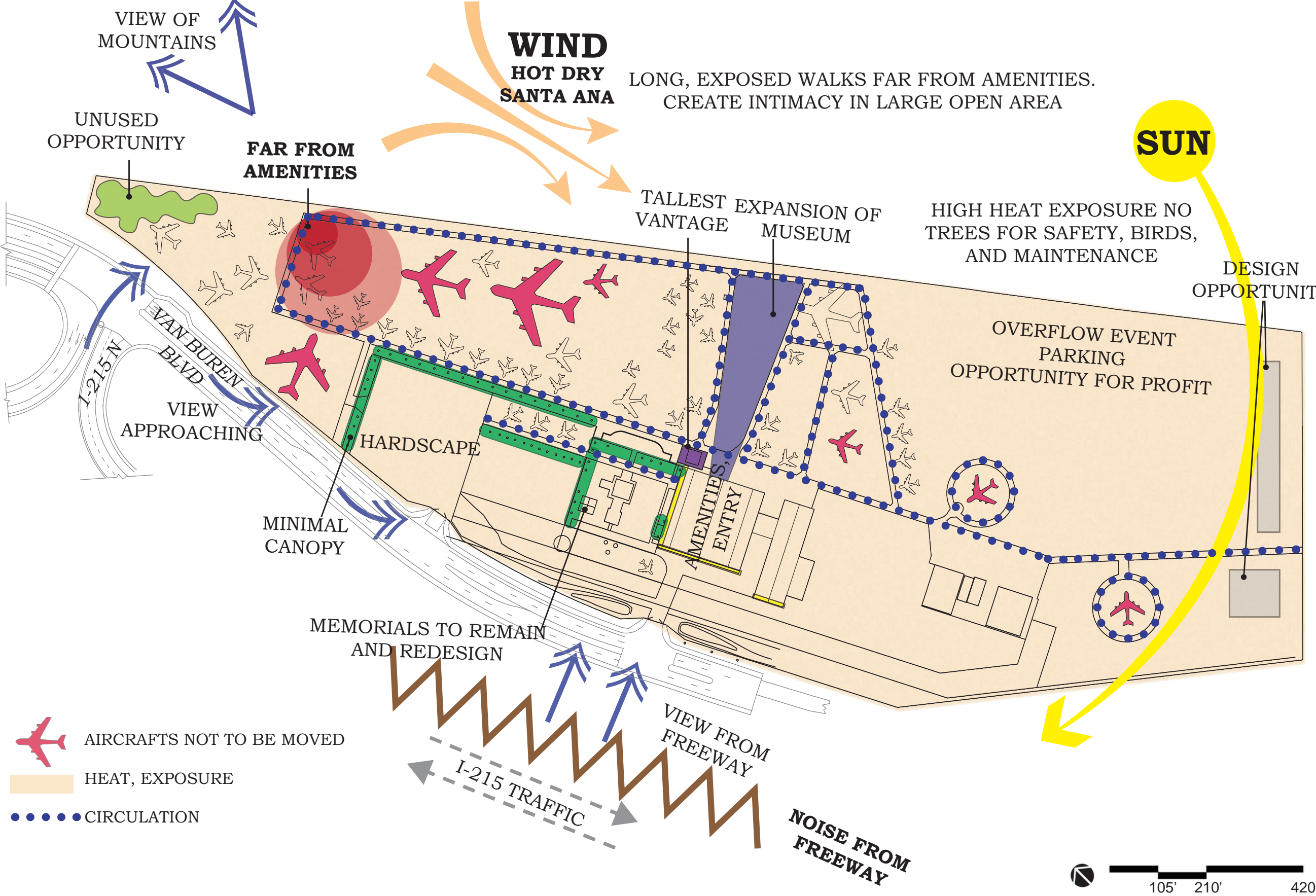
### VICINITY MAP



### CONTEXT MAP

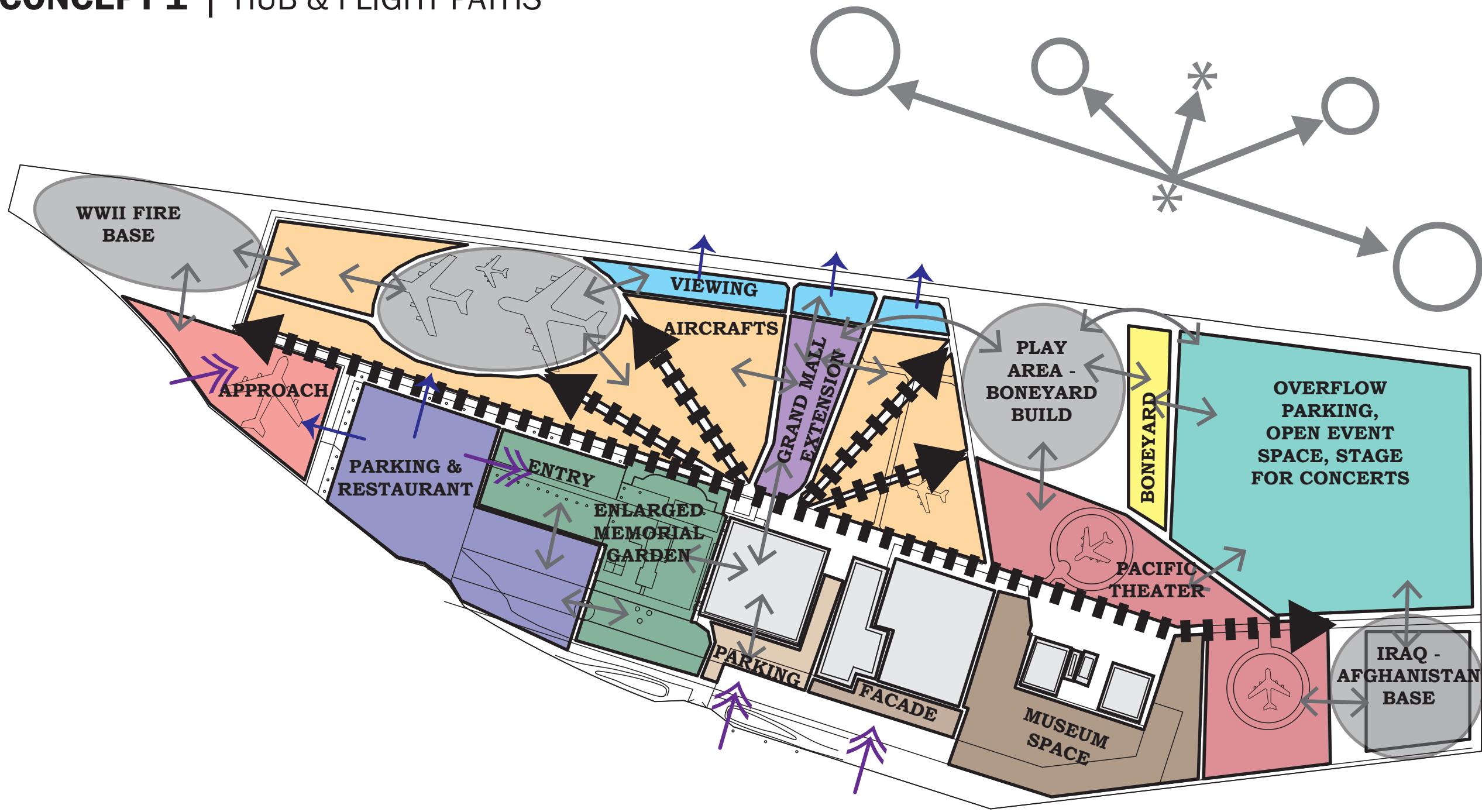


### SITE ANALYSIS

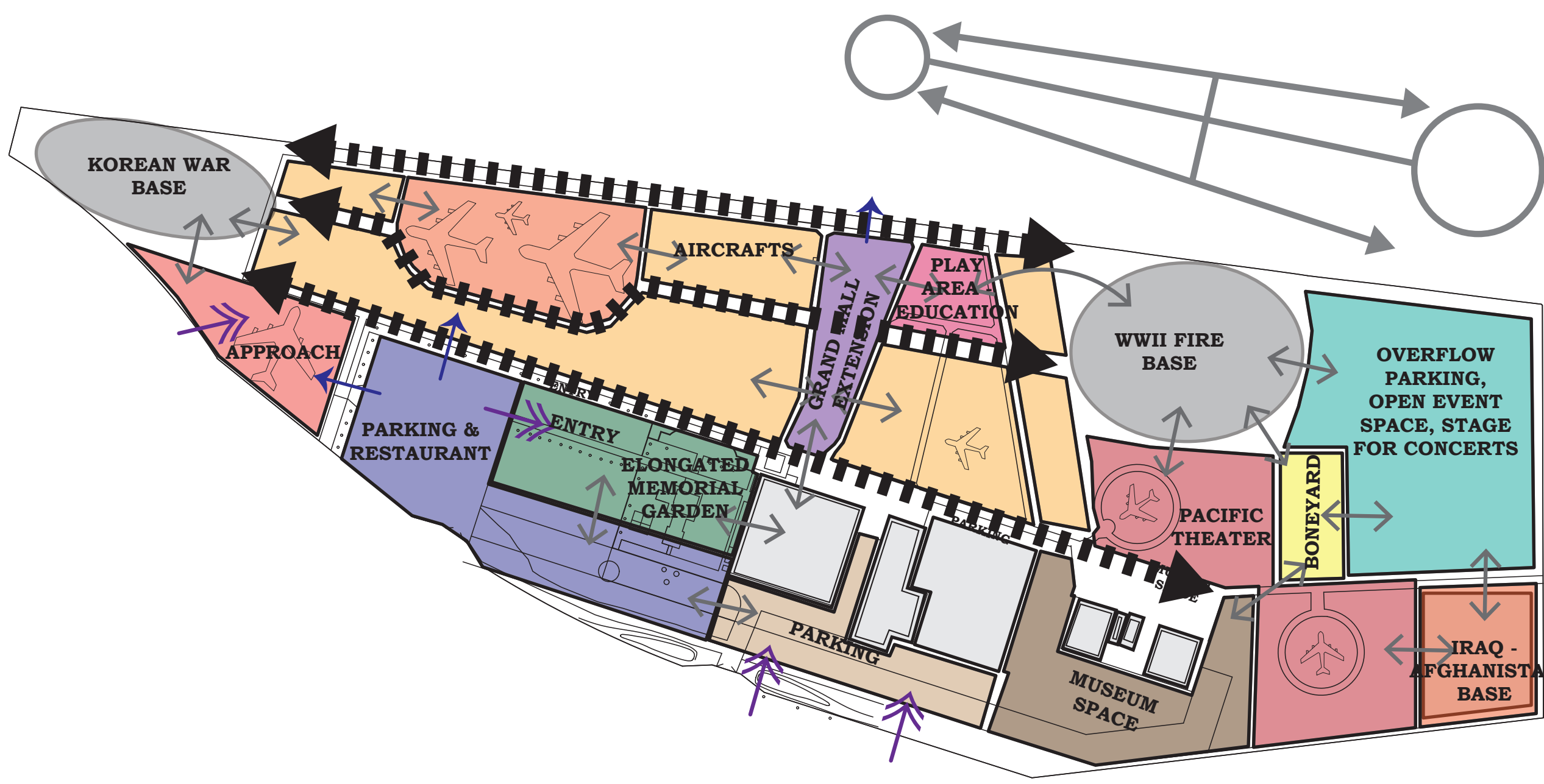


### CONCEPT DIAGRAMS

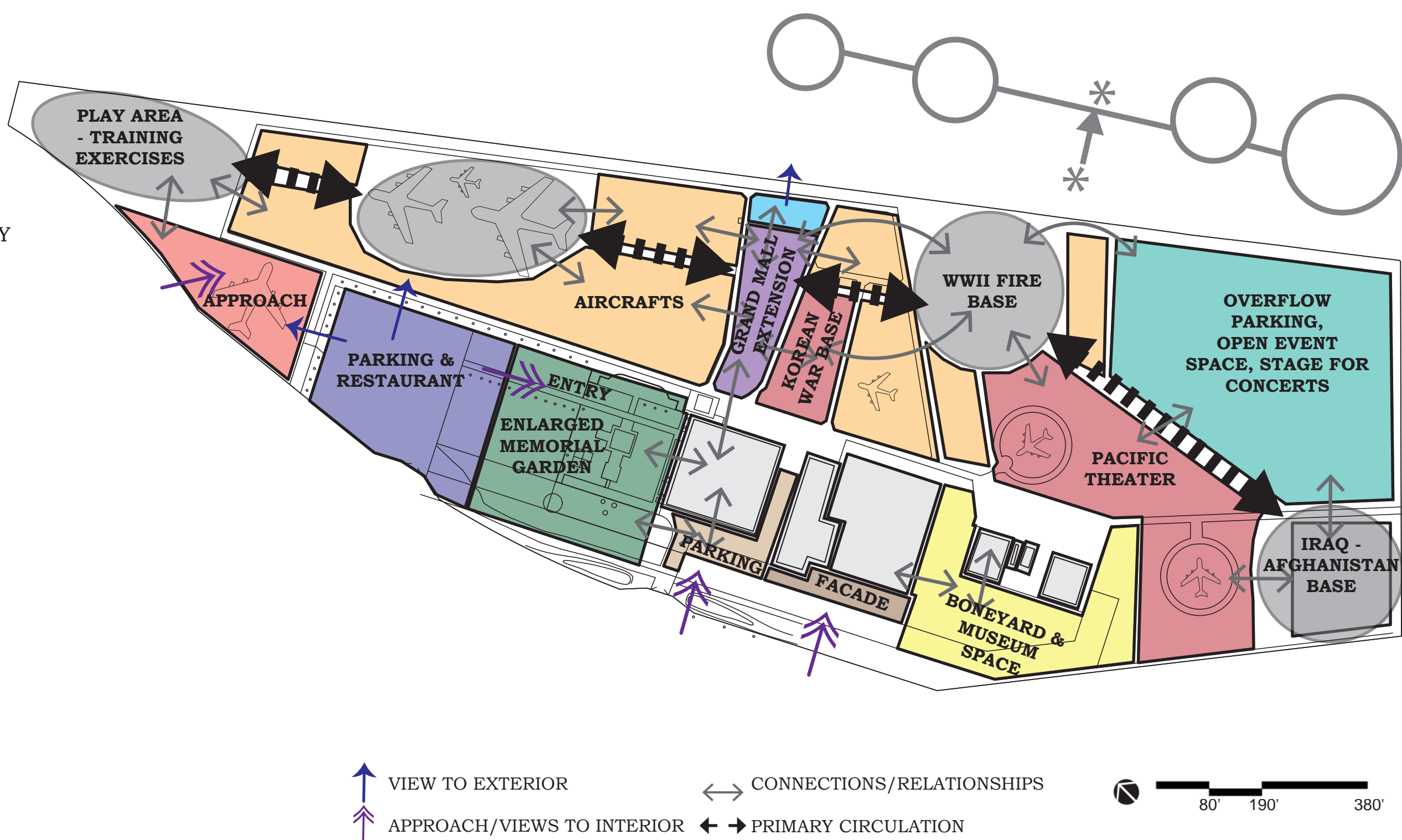
#### CONCEPT 1 | HUB & FLIGHT PATHS



#### CONCEPT 2 | THE RUNWAY



#### CONCEPT 3 | FOCAL POINTS

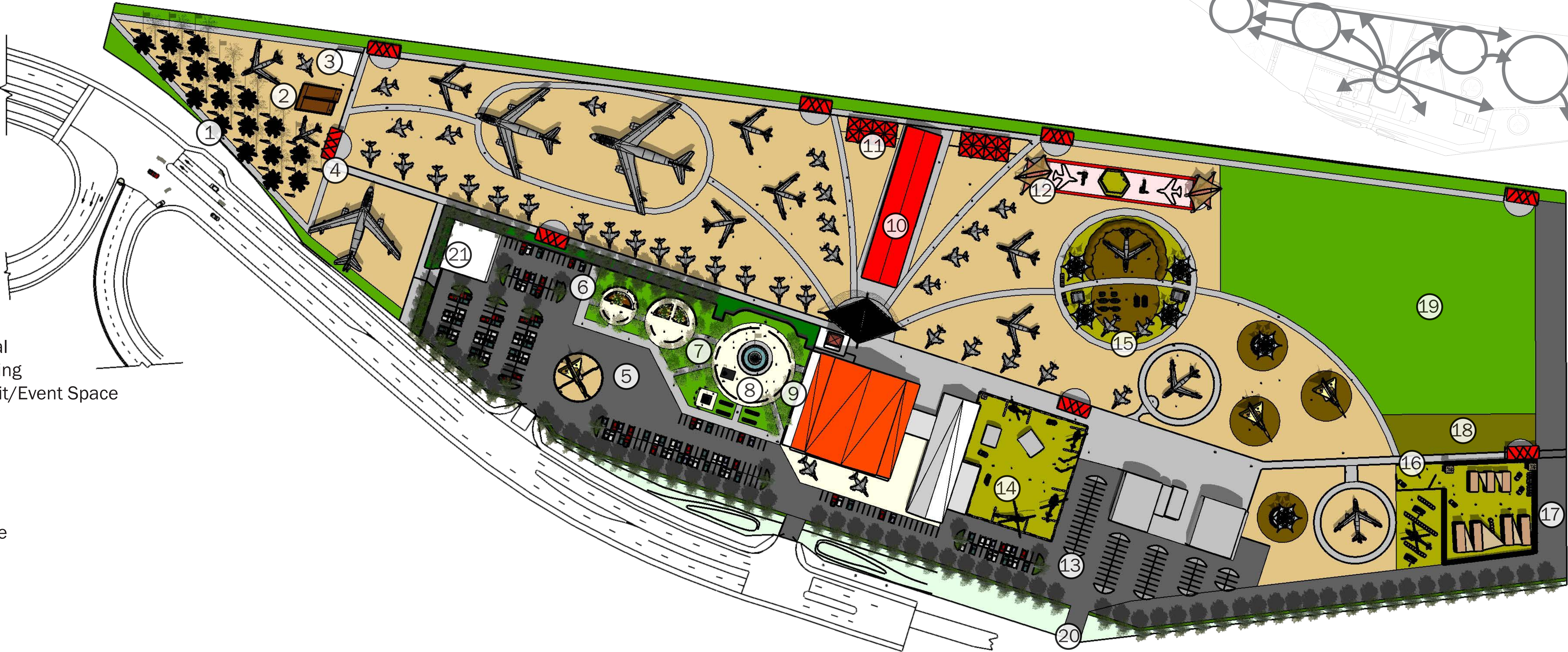


Master Plan

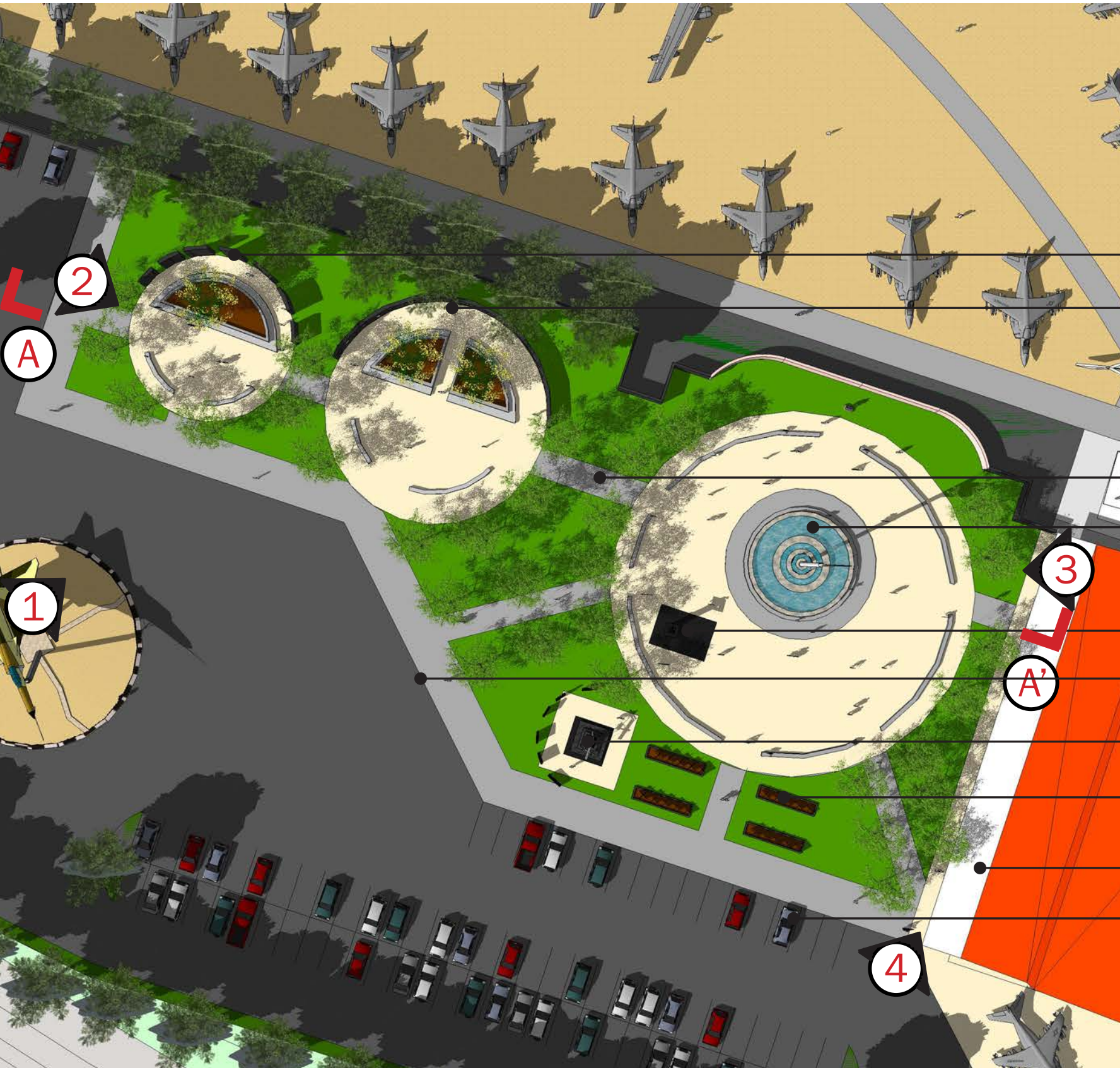
REFINED CONCEPT

PLAN NOTES

- 1 High-Visibility Approach
- 2 Elevated Look-out
- 3 Cafe & Restrooms
- 4 Covered Tram Stop
- 5 Retained Paved Parking Lot
- 6 New Entrance Plaza
- 7 New Heritage Courtyard
- 8 New Gen. "Hap" Arnold Memorial
- 9 New Covered Walkway and Seating
- 10 New Grand Mall Covered Exhibit/Event Space
- 11 New Covered Viewing Areas
- 12 New Children's Play Area
- 13 New Additional Parking
- 14 Vietnam Fire Base
- 15 New WWII Fire Base
- 16 New Iraq/Afghanistan Fire Base
- 17 New Road
- 18 Boneyard
- 19 New Overflow Parking
- 20 New Additional Entrance
- 21 Planned Restaurant

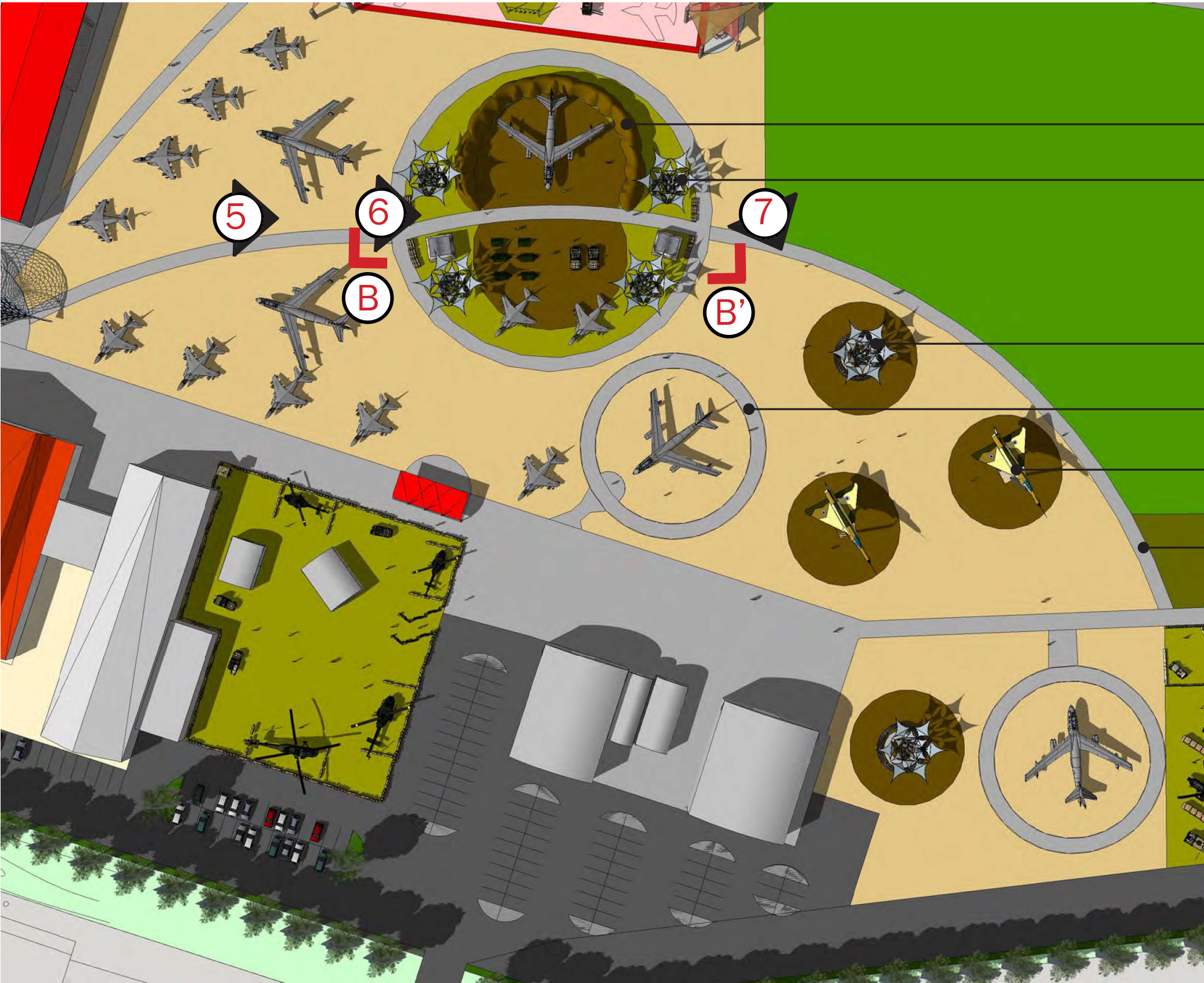


HERITAGE GARDEN



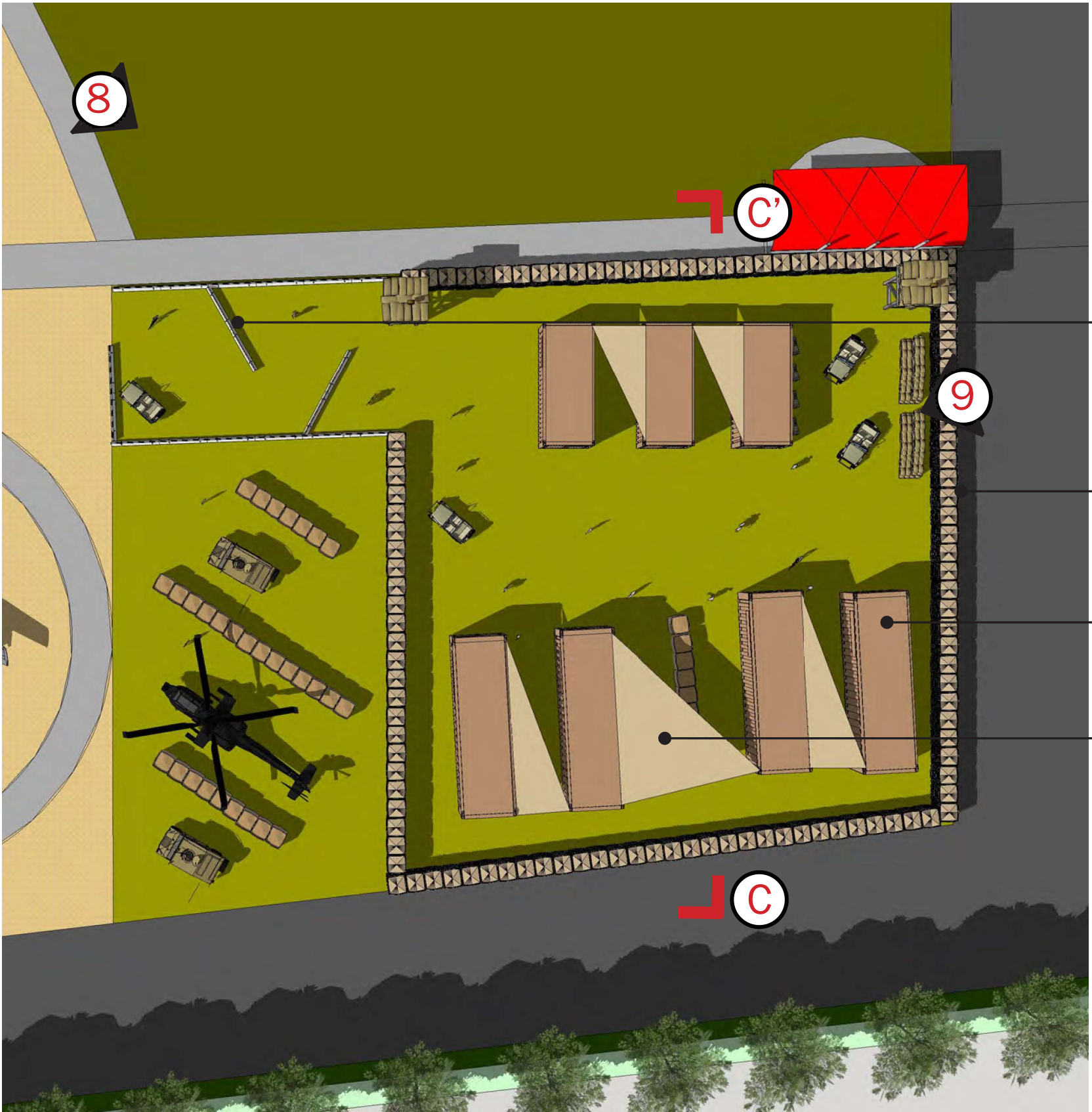
- SMALL MEMORIAL ROOM
- WOMEN'S MEMORIAL ROOM
- MAIN ENTRANCE AXIS RETAINED
- GEN. "HAP" ARNOLD MEMORIAL
- WAR DOG MEMORIAL
- DROP-OFF AREA
- DFC NATIONAL MEMORIAL
- ROSIE THE RIVETER MEMORIAL
- ROSE GARDEN
- SHADED SEATING
- ACCESSIBLE PARKING

WWII FIRE BASE



- REVTMENT
- "TREE" SHADE SEATING
- "TREE" SHADE SEATING ISLANDS
- RETAINED PACIFIC THEATER
- "ISLAND" MONUMENTS
- "FLIGHT PATH" PATHWAY


IRAQ/AFGHANISTAN OPERATING BASE



- K-RAIL ENTRANCE
- HESCO BOUNDARY
- CONEX CONTAINERS LIVE/WORK
- SHADE

# Heritage Garden



GROUNDCOVER		SHRUBS/GRASS		SUCCULENTS				TREES	
									
Native Bent Grass <i>Agrostis pallens</i> WUCOL L	Bush Sunflower <i>Encelia californica</i> WUCOL L	Deergrass <i>Muhlenbergia rigens</i> WUCOL M	Black Sage <i>Salvia mellifera</i> WUCOL L	Century Plant <i>Agave americana</i> WUCOL VL	Blue Glow Agave Agave 'Blue Glow' WUCOL VL	Smooth Agave <i>Agave desmetiana</i> WUCOL VL	Britton dudleya <i>Dudleya brittonii</i> WUCOL L	Blue Palo Verde <i>Parkinsonia florida</i> WUCOL VL	African sumac <i>Searsia lancea</i> WUCOL L



A newly designed garden to honor veterans with grand monuments and reflective, small, intimate spaces.



The courtyard's new design proposes a large gathering space for group tours with ample seating and shade from trees.



A new shaded entry guides visitors to the main entrance.

## EXISTING SITE



## PRECEDENTS



Veterans Memorial Park, Alexandria, Minnesota. Design includes hierarchy of flag poles and walls, wide pathways, shared experiences, and seating for pause and reflection.

## VISION

MOMENTS TO SIT

EDUCATIONAL GATHERINGS



Source: <https://legacywalk.fsu.edu/locations/memorial-garden/>



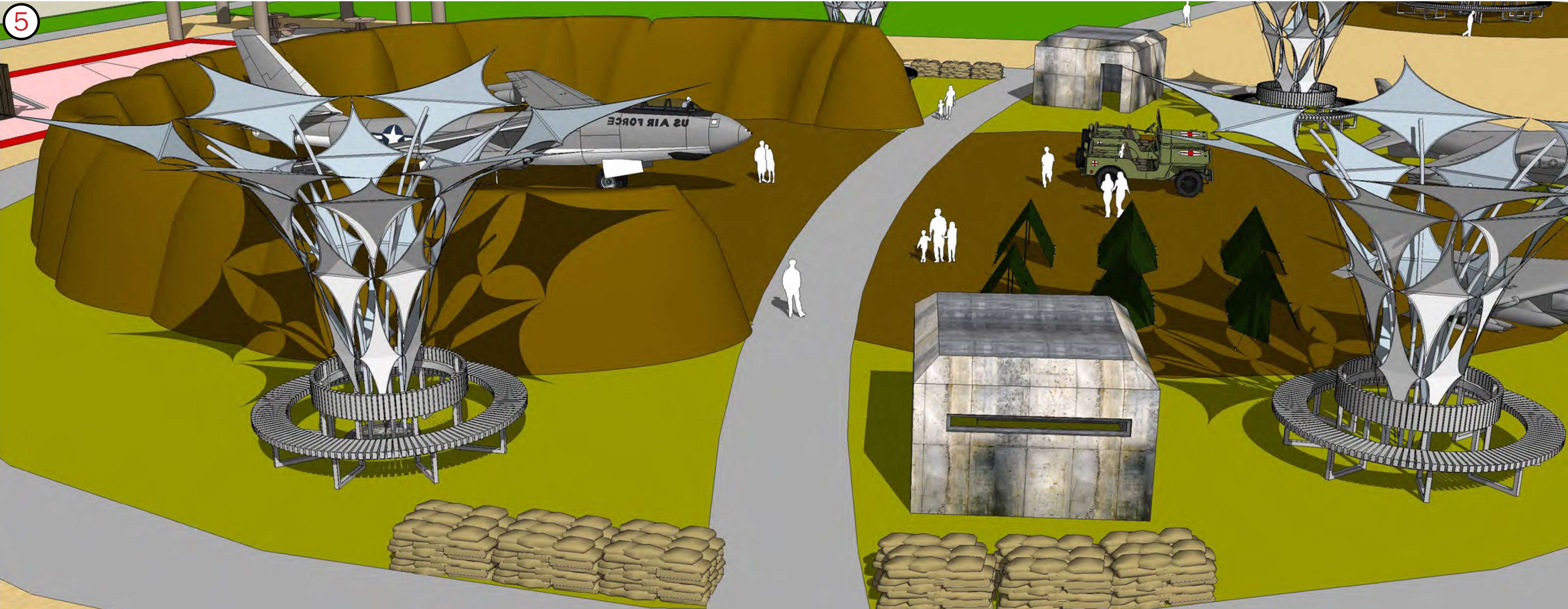
Source: <https://botanicalgarden.berkeley.edu/rentals-redwood-grove>



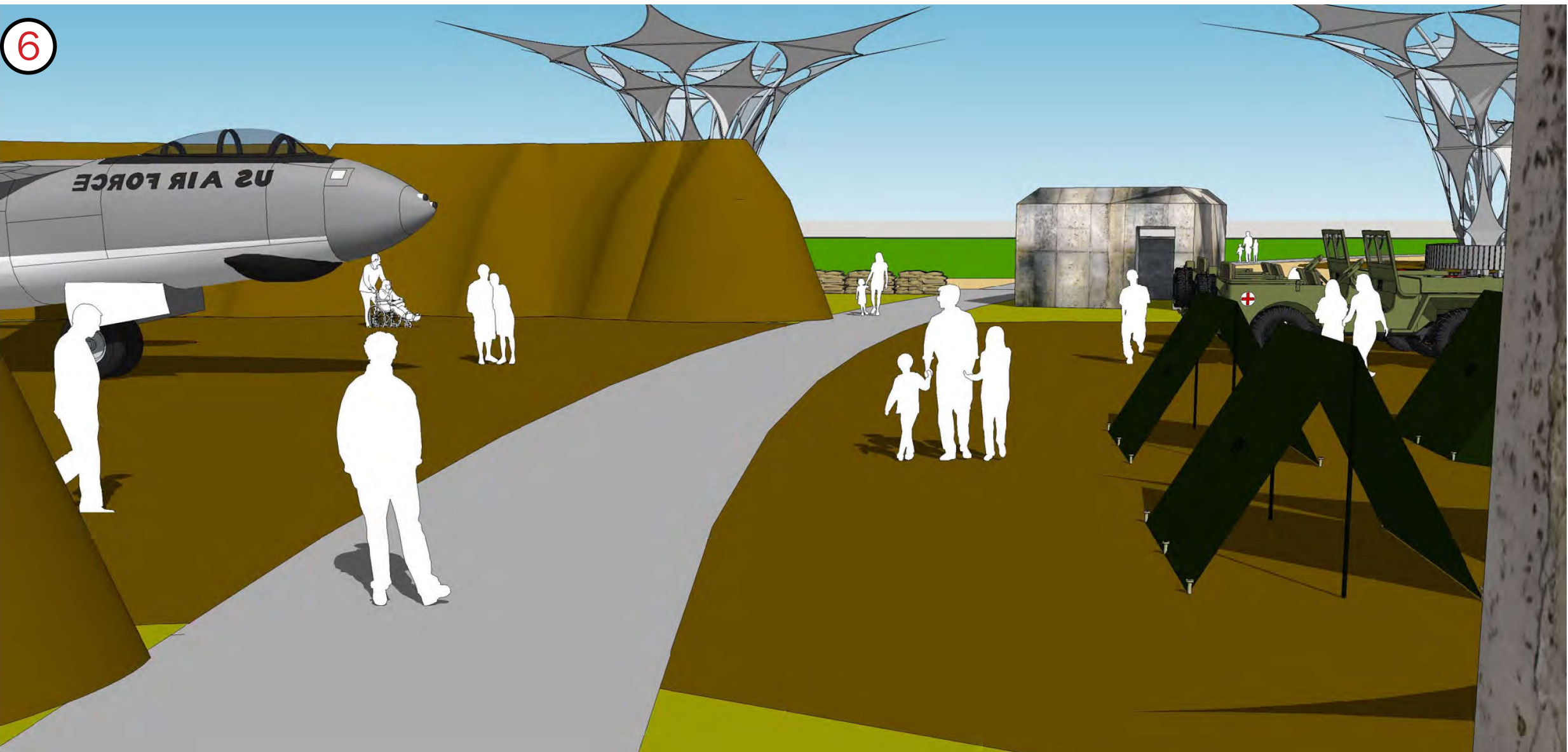
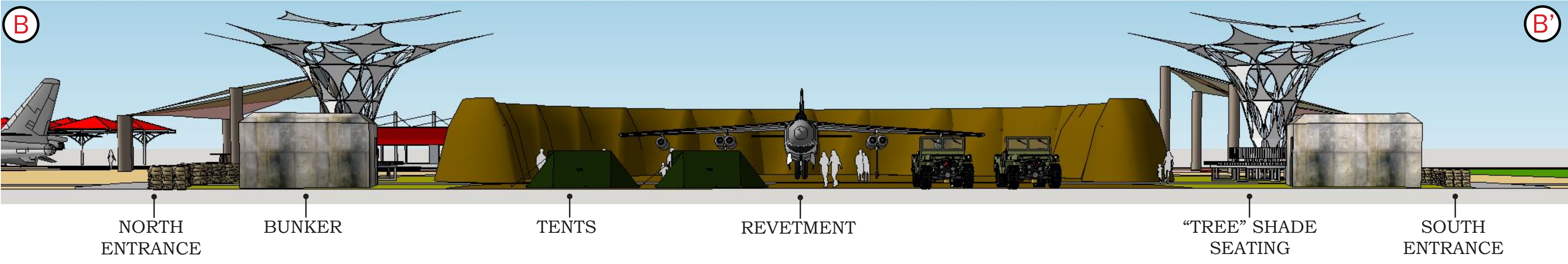
Desert Botanical Garden, Phoenix, Arizona. Walls and materials used for seating, and creates rooms for intimate small spaces.



# WWII Fire Base



The revetment and Island Concept connects the WWII Fire Base with the Pacific Theater using a series of islands of exhibits and shaded seating areas that provide a journey of stepping-stones. The new design inspires exploration and evokes remembrance from use of materials, scale, and journey.

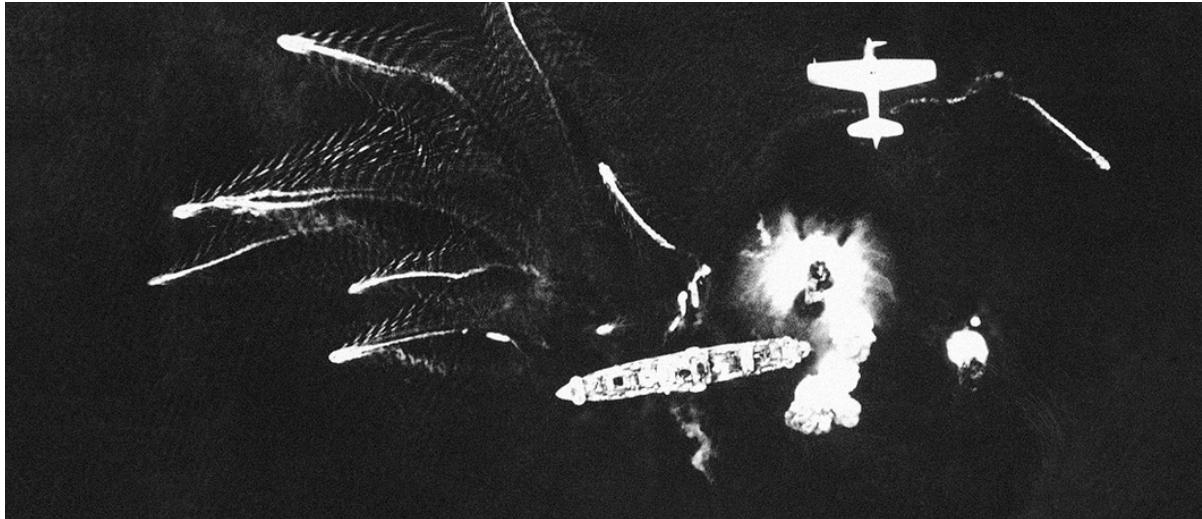


A new revetment exhibit used as protection and designed as a display.



Newly added pathways and shade structures to enhance experience.

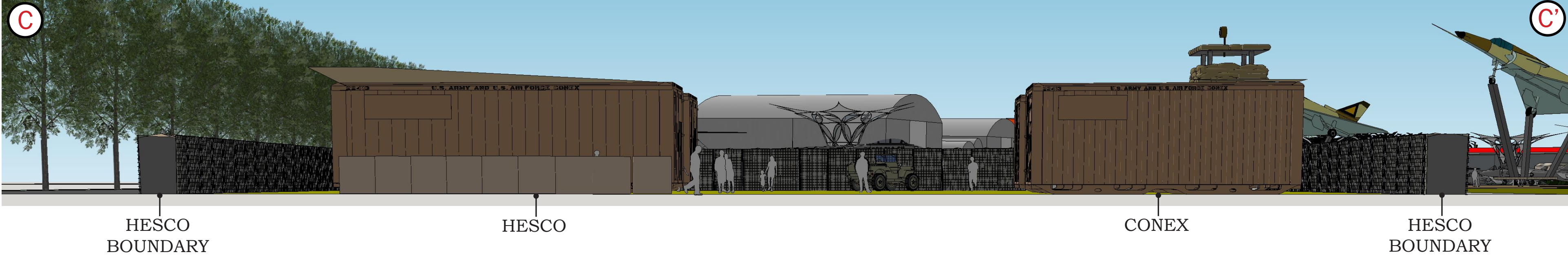
## INSPIRATION PACIFIC THEATER



# Iraq/Afghanistan Operating Base



The new design creates a grand entrance and delineates the space with accurate barriers to provide an intimate, unique experience not commonly found elsewhere.



Newly designed series of rooms for close contact with accessible exhibits.

## INSPIRATION MATERIALS



Newly added pathways and shade structures to enhance experience.