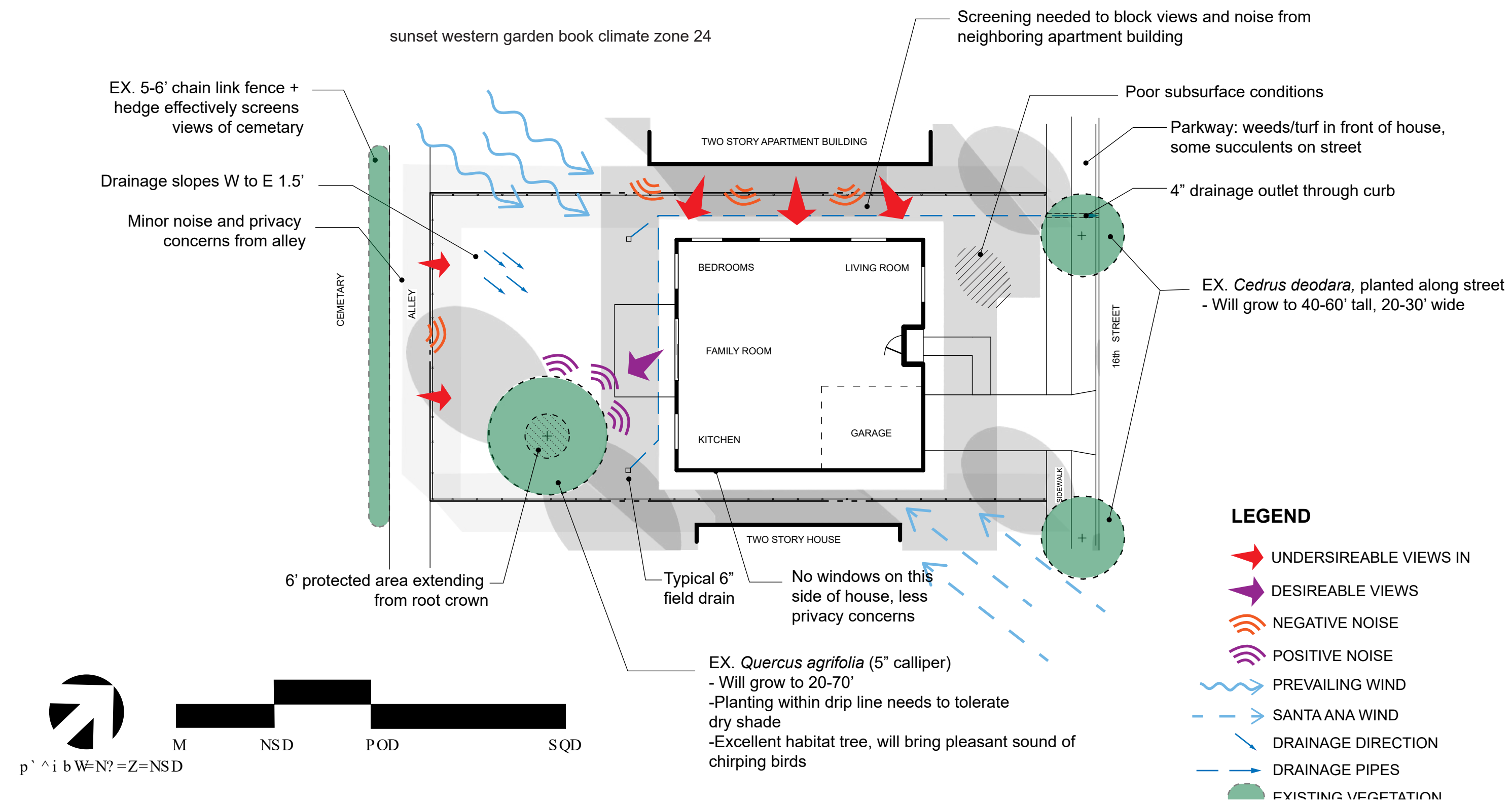


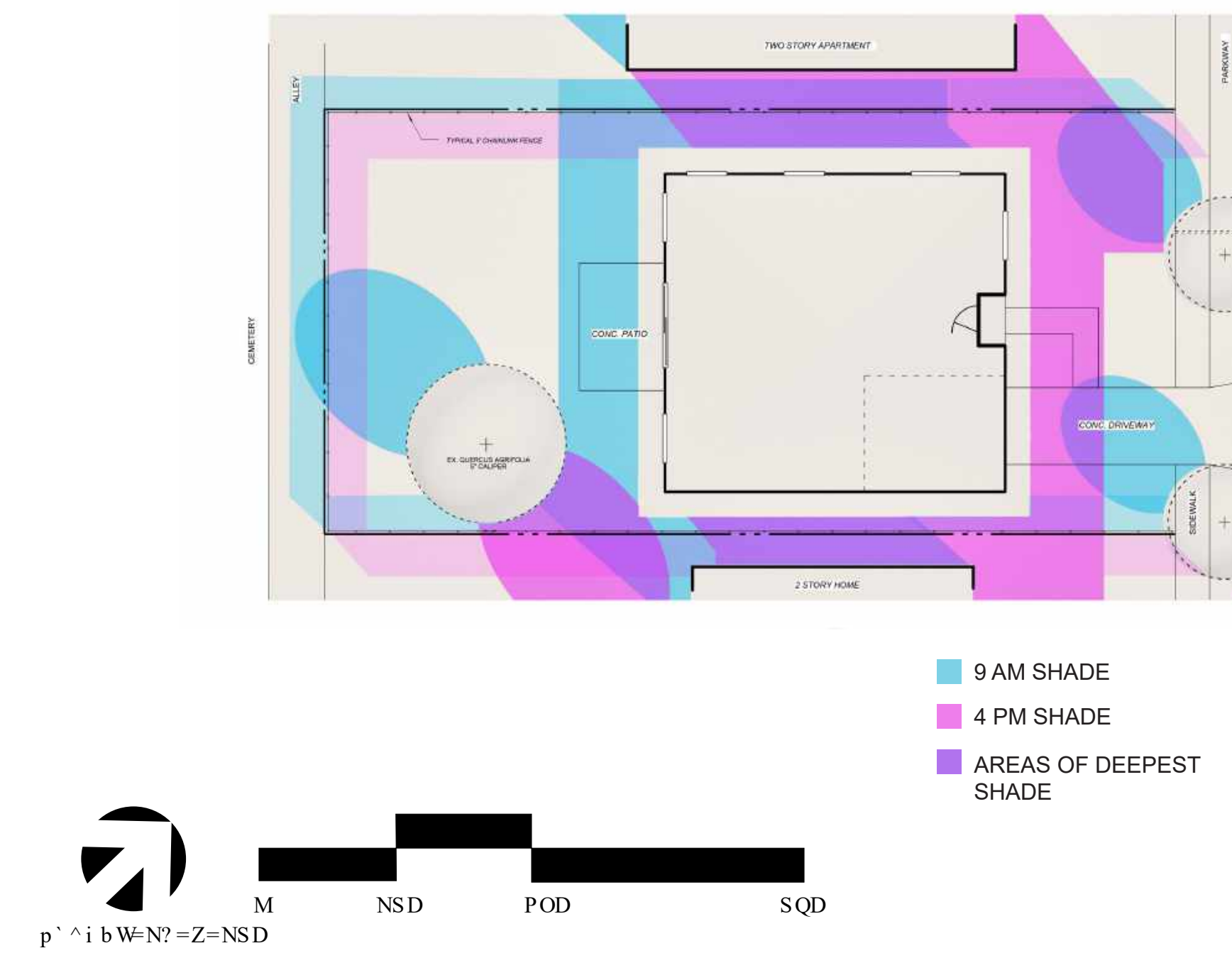
ANALYSIS AND CONCEPT DEVELOPMENT

TIM SWITZER 4.29.20
LANDSCAPE DESIGN 5: PLANTING DESIGN

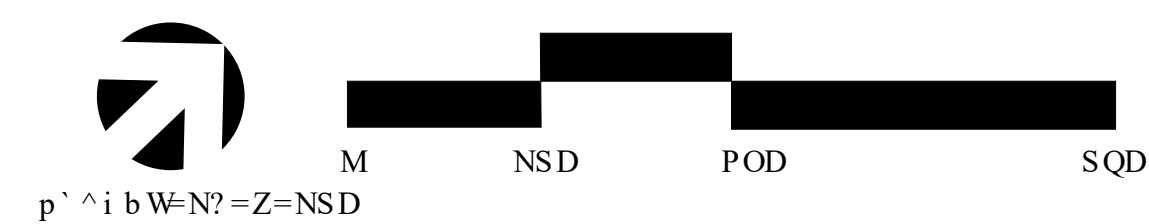
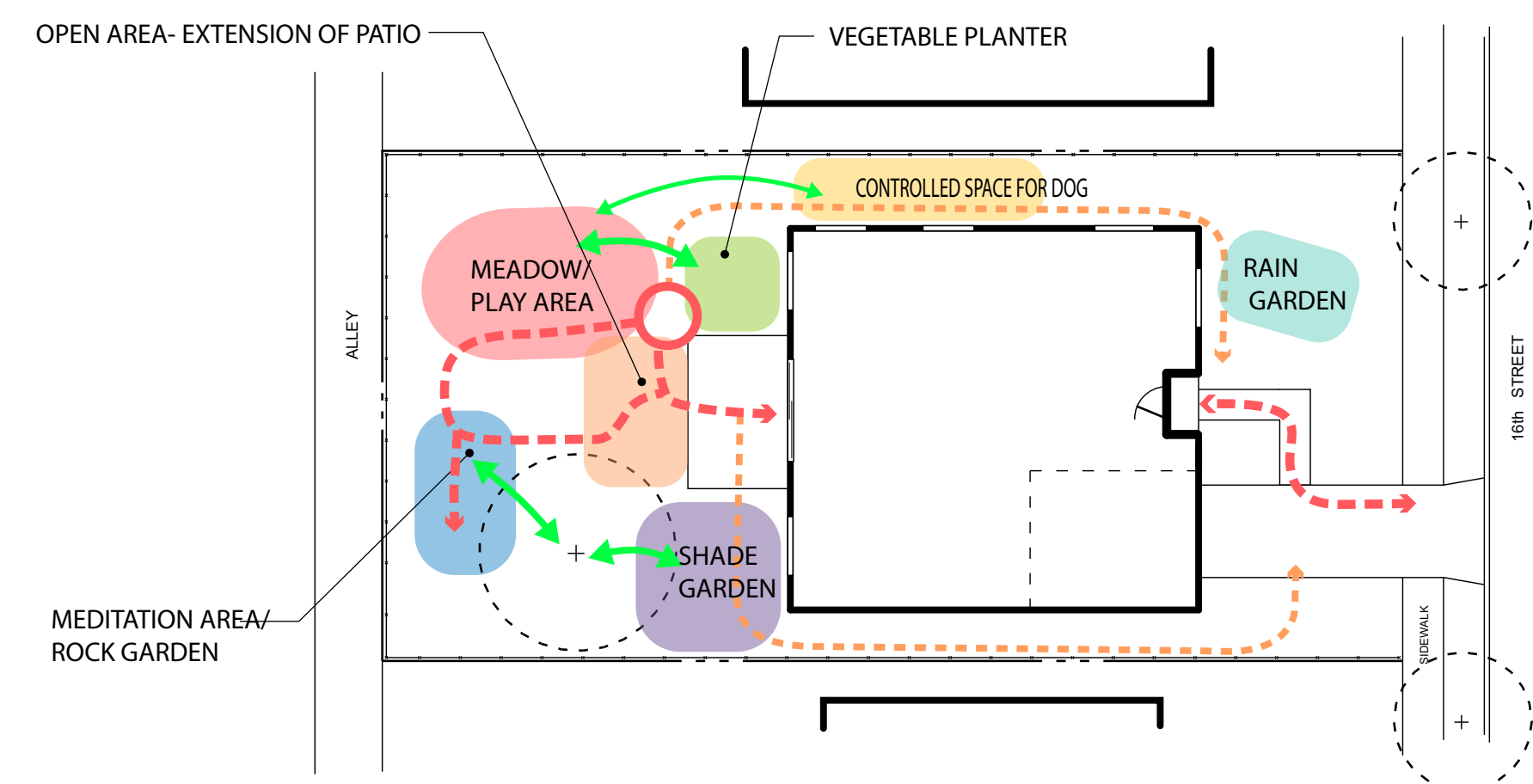
SITE ANALYSIS



SUN/ SHADE DIAGRAM



AREA USE DIAGRAM



DESIGN NARRATIVE

This redesign of a Santa Monica residence brings an almost exclusively native plant garden, and all of the benefits that come along with it, to a young family. The birds, bees, and butterflies will make themselves at home alongside the family, and both will enjoy the coast sage scrub and chaparral plants.

The backyard is anchored by a coast live oak, on it's way to majestic maturity. As it commands the space and attention of that side of the yard, the planting is more muted- featuring white and pale pink flowers, contrasting glossy dark green foliage with pale silvers and blues, and mounding cloud-like plants that allow the structure of the oak to remain dominant. A meditation rock garden and yoga area features an Howard McMinn Manzanita as a sculptural focal point, while the shade garden under the oak makes use of masses of alumroot and hummingbird sage, with a evergreen currant backdrop.

The sunnier side of the yard is more playful, fragrant, and wild, with the kitchen plot right outside the sliding glass door opening up to a mowed blue gamma meadow surrounded by gilia, pitcher sage, cleveland sage and coyote mint- a fitting place for the family's young daughter to explore. A central planting cluster features a western redbud surrounded by a cluster of contrasting buckwheats and island snowflake, breaking up the space between the wild and the tranquil.

CONCEPTUAL PLANTING PLAN & PLANT PALETTE

