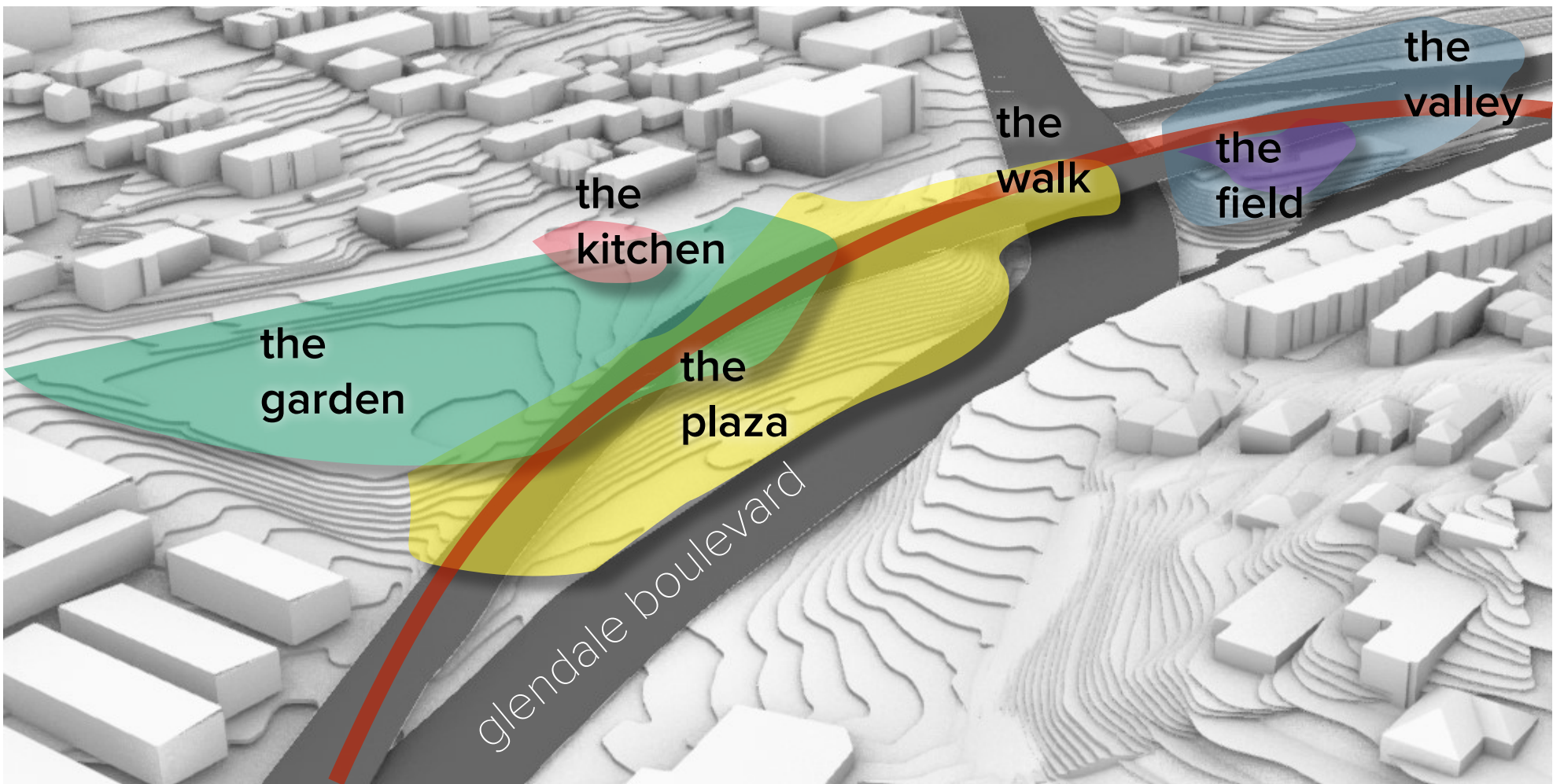
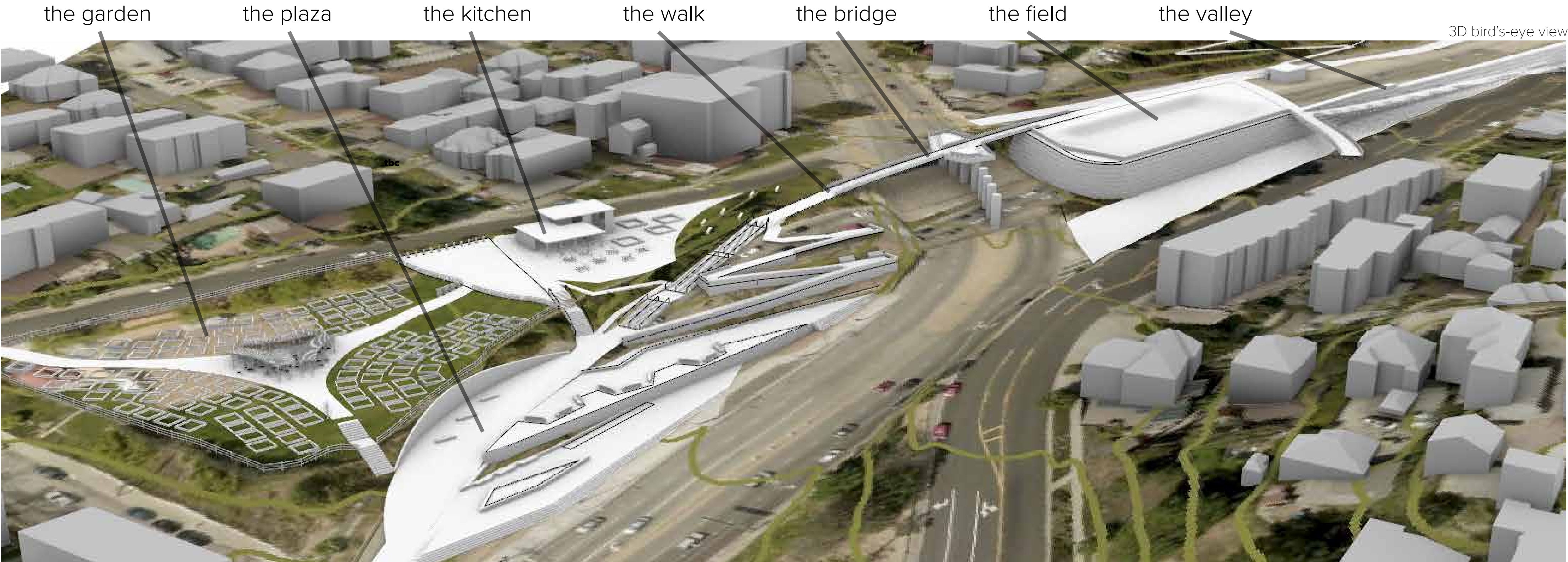


The park is split into two major sections, with Glendale boulevard providing a natural division, spanned by a bridge. On the south side of the bridge are the community hubs of **The Garden, The Plaza** and **The Kitchen** while the north side contain the recreation hubs of **The Field** and **The Valley** all connected by the major axis of **The Walk**



Illustrative plan

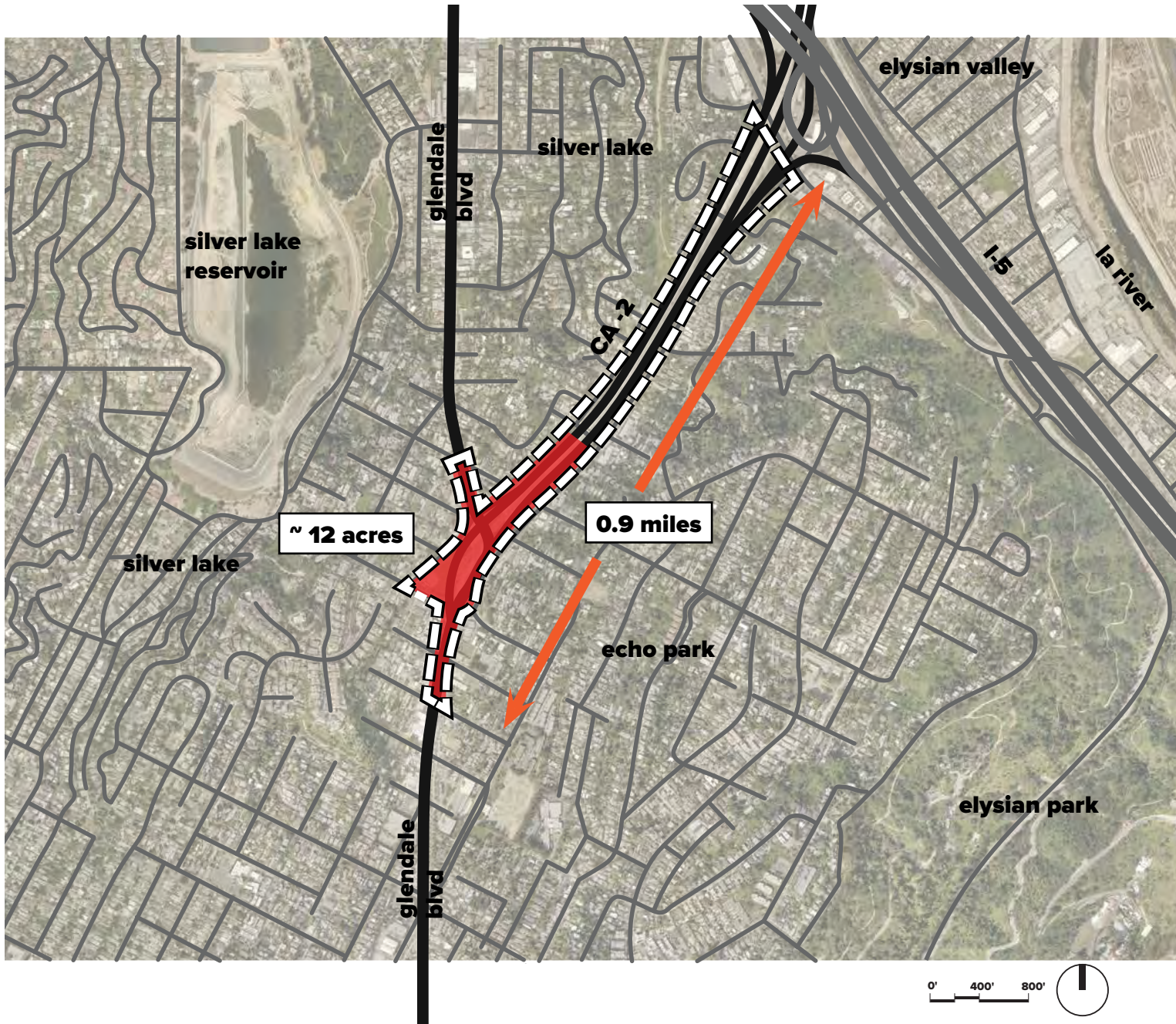


3D bird's-eye view



The intersection of CA-2 and Glendale Boulevard in Echo Park is a tangle of concrete, asphalt and traffic in the middle of a vibrant neighborhood (and city) that is rapidly changing and getting denser. This chaotic intersection is ripe for reinvention, with the potential to give the surrounding neighborhood needed public space.

As the world is on the verge of significant technological change, this project looks to create a space that keeps an eye on that future: a space that can hopefully inspire as we approach coming revolutions in autonomous transport and mobility technology that will potentially transform how we share space in our urban environment.

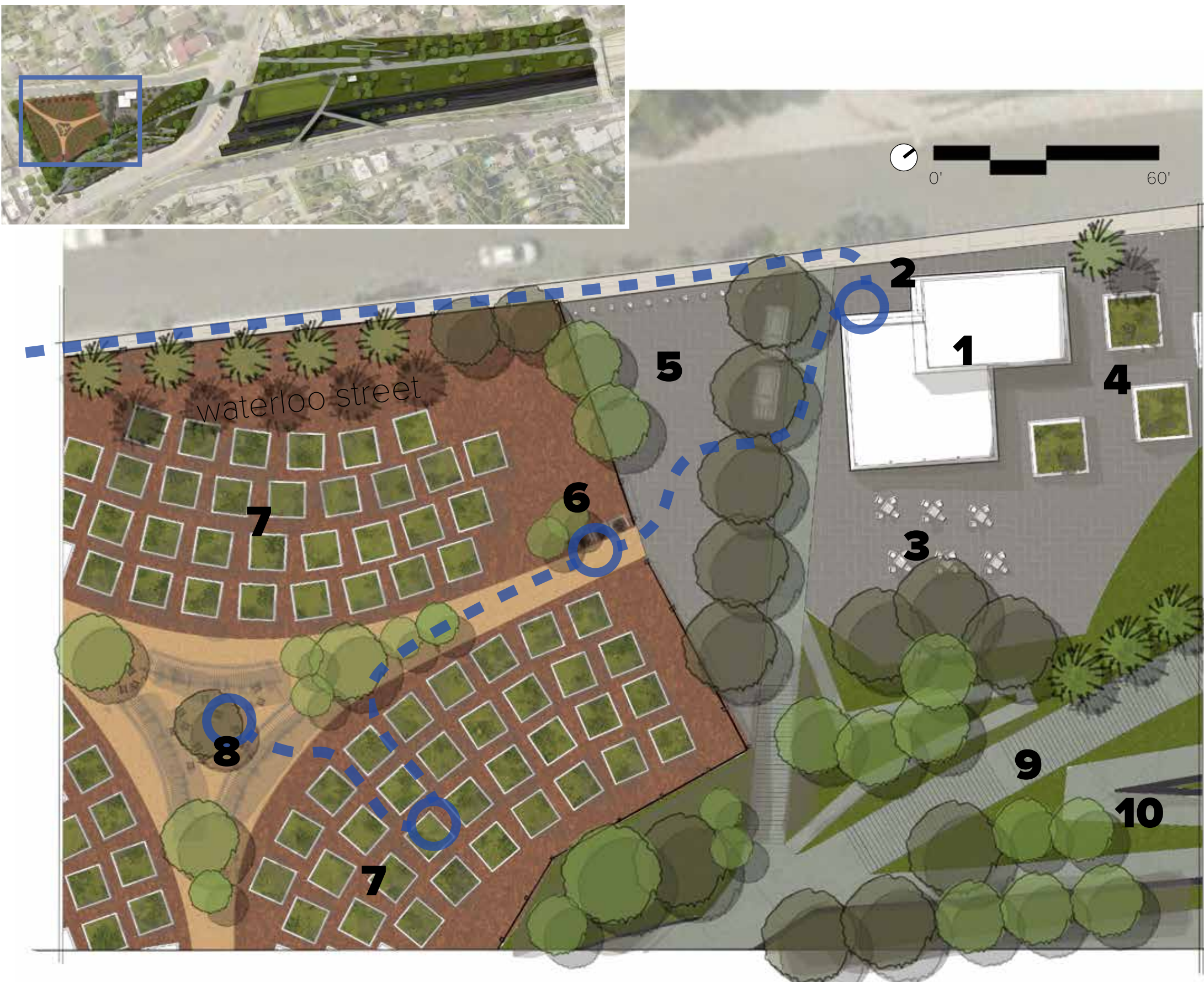


a day in the life...
an afternoon at the garden

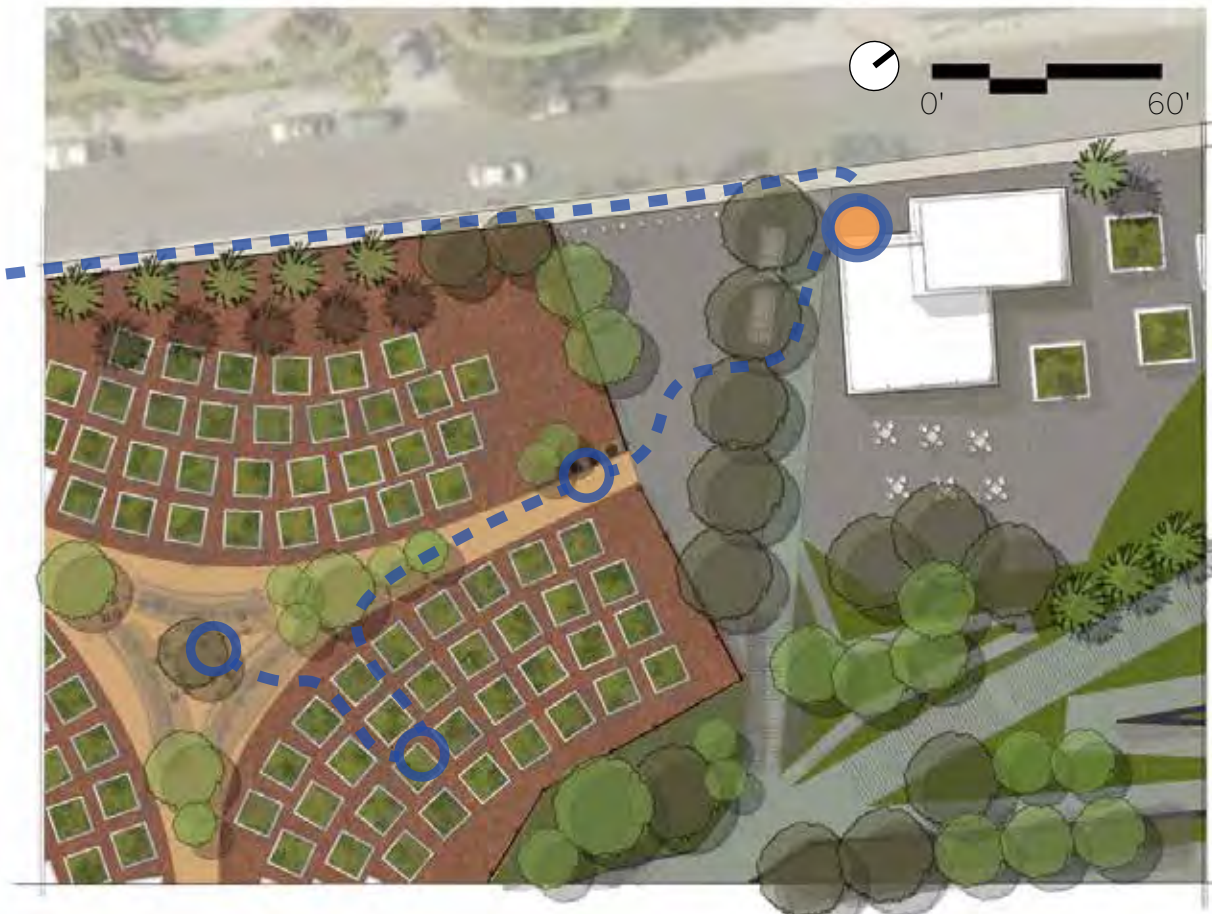
Marisol's afternoon in the garden.

Marisol lives nearby, and walks to The Kitchen and its community stoarge lockers where she keeps her garden tools. On the way to her plot, she stops by the community composting bin, to drop off some food scraps from home and pick up some compost to amend the soil in her garden plot. She spends time readying the bed for a new season of vegetables, but when she's had a bit too much sun, she takes a break to catch some shade and chat with friends under the central trellis.

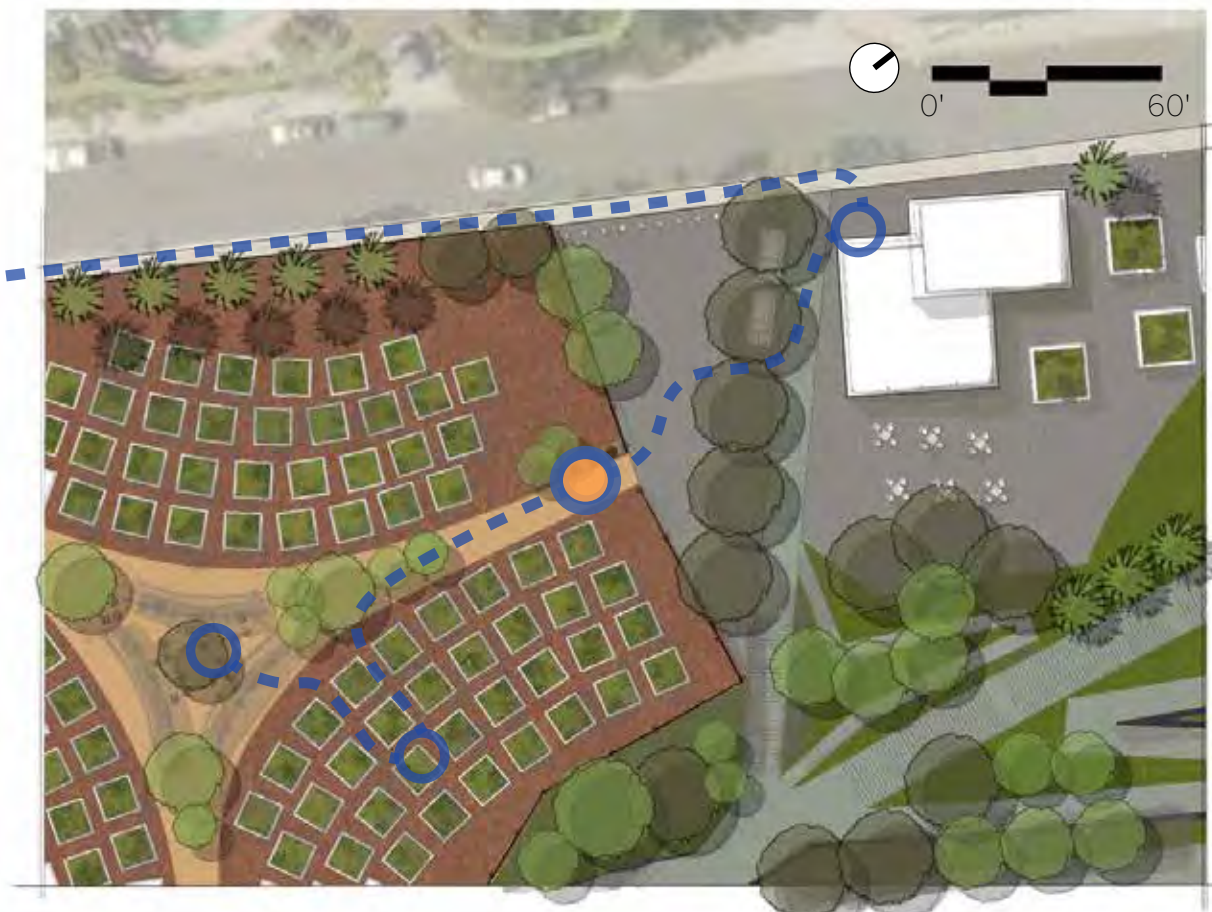
- 1 the kitchen
- 2 community storage lockers
- 3 cafe plaza
- 4 demonstration & exhibit garden
- 5 garden plaza
- 6 community compost
- 7 10 x 10 garden plots
- 8 the gazebo
- 9 the steps
- 10 the stroll



picking up garden tools at the community lockers



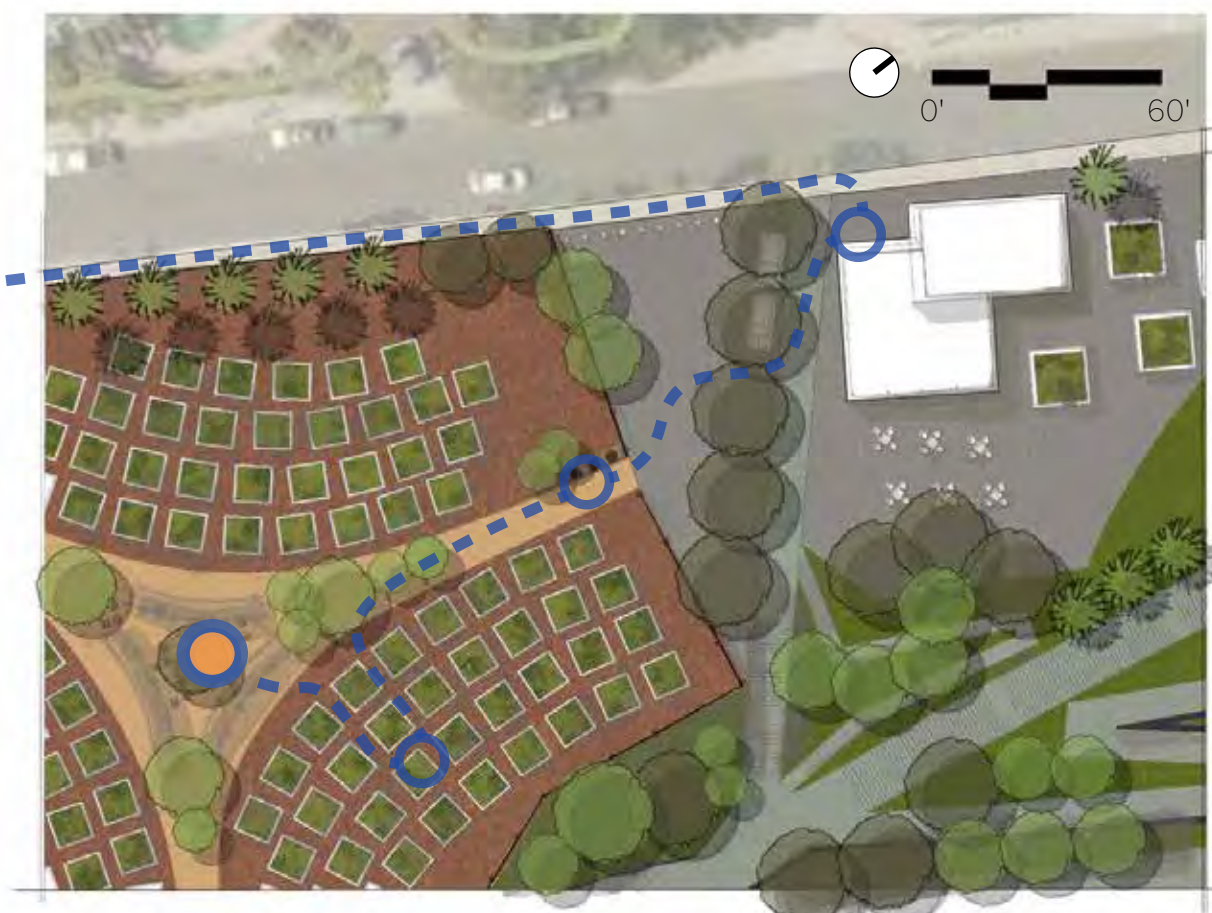
a quick stop-off at the community compost bins



doing some work on the garden plot



visiting friends and resting in the shade



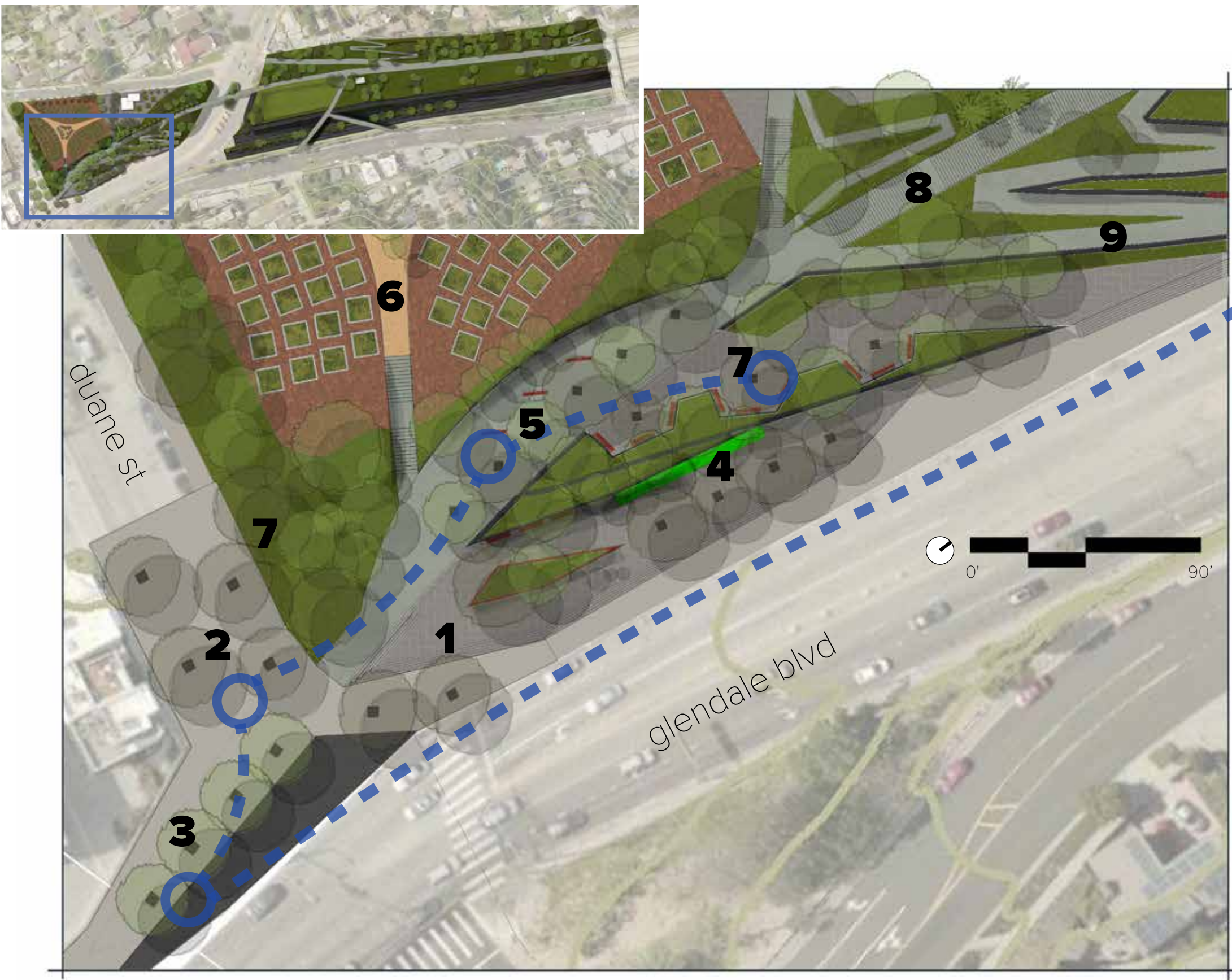
a day in the life...

meet me at the plaza

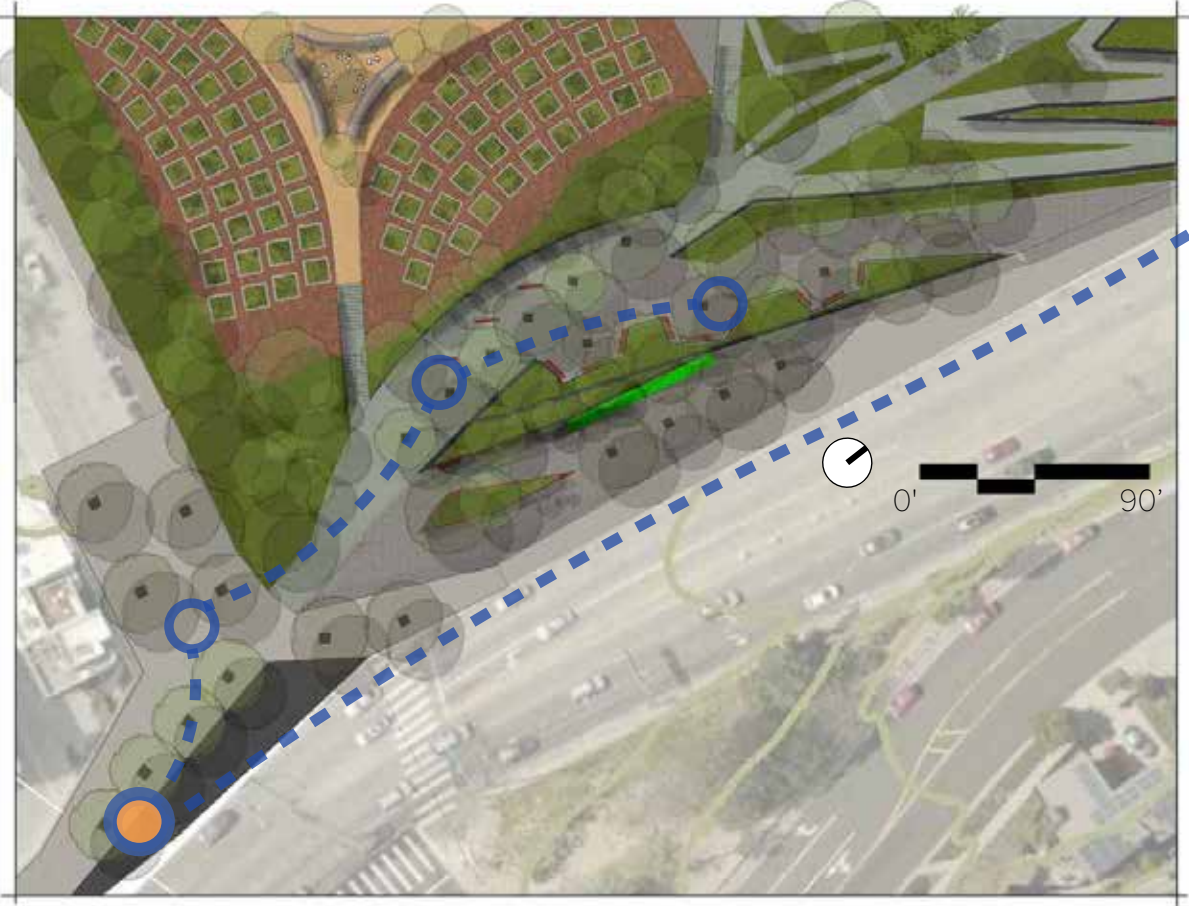
Marcus meets up with a friend at The Plaza.

Marcus takes the 92 bus down from Atwater, a quick and easy ride that drops him off right at the park. He sees that his favorite food truck is there at the marketplace that day, so he stops to pick up some street meats. On his way up to meet his friend up on the terrace, he sees there's a new exhibit up at the gallery wall and takes a few moments to check it out. His friend has scoped out a seat and Marcus joins him to tuck into his sandwich and catch up.

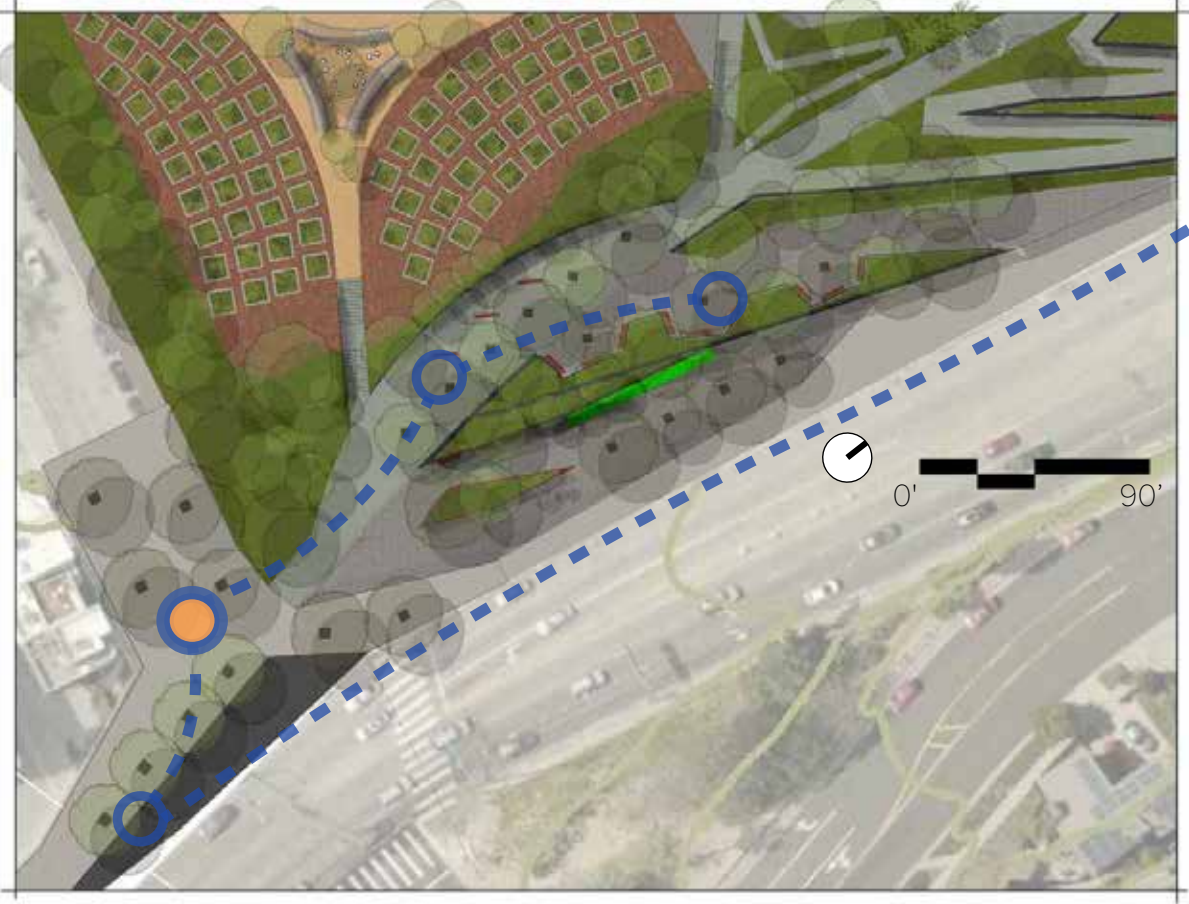
- 1 arrival plaza
- 2 marketplace plaza
- 3 bus and rideshare drop-off
- 4 bike-share & micro-mobility station
- 5 gallery wall
- 6 the garden
- 7 the terrace
- 8 the steps
- 9 the plaza



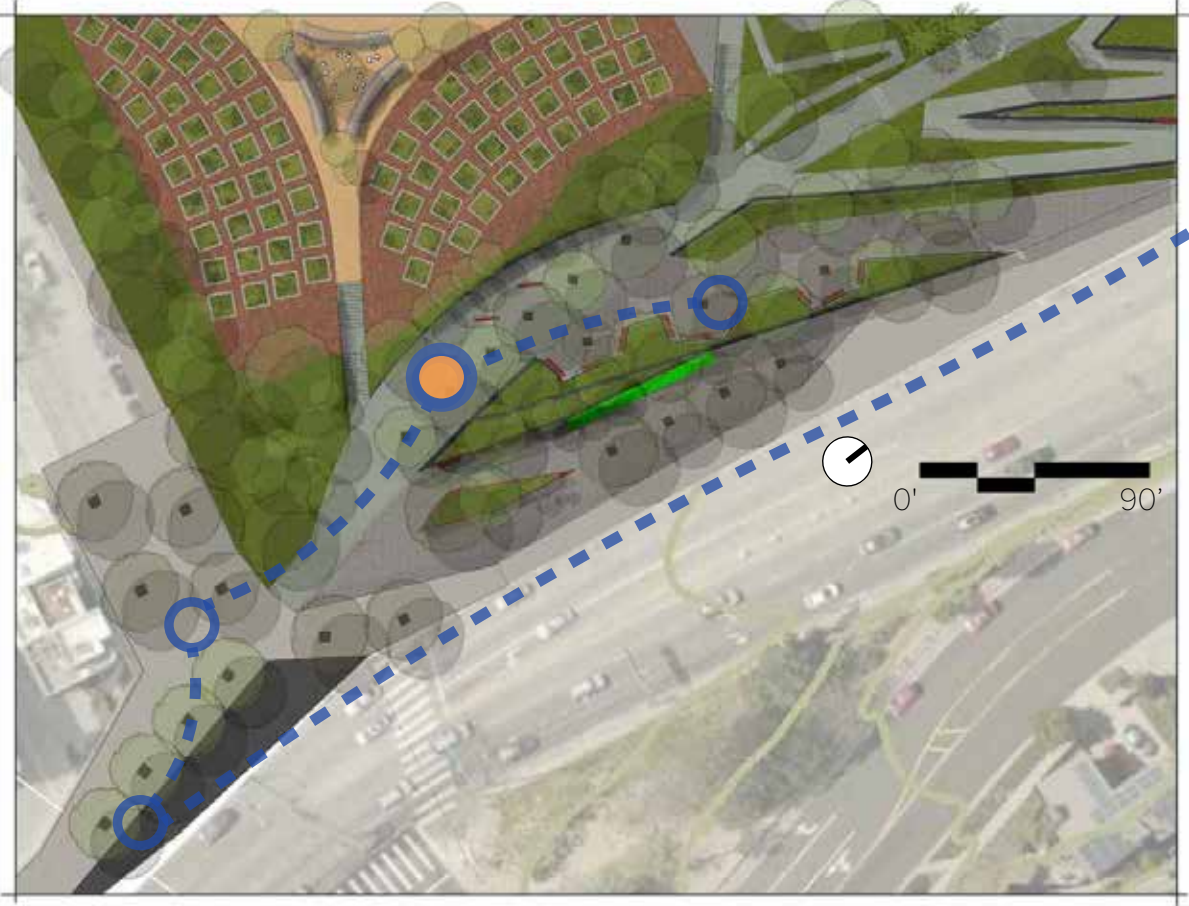
coming down fom Atwater on the 92 bus



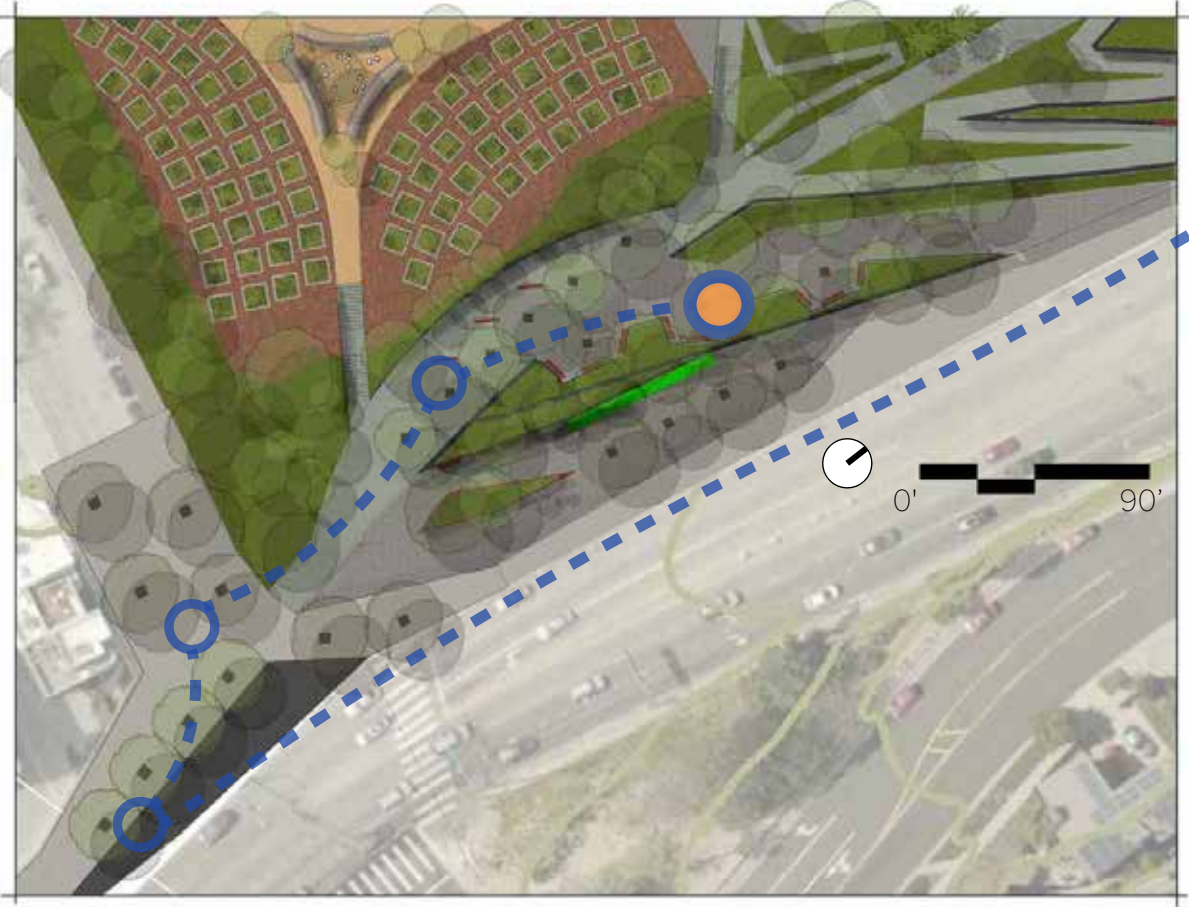
picking up some street food at the marketplace



a quick view of the latest exhibit at the gallery



meeting up with a friend at the terrace



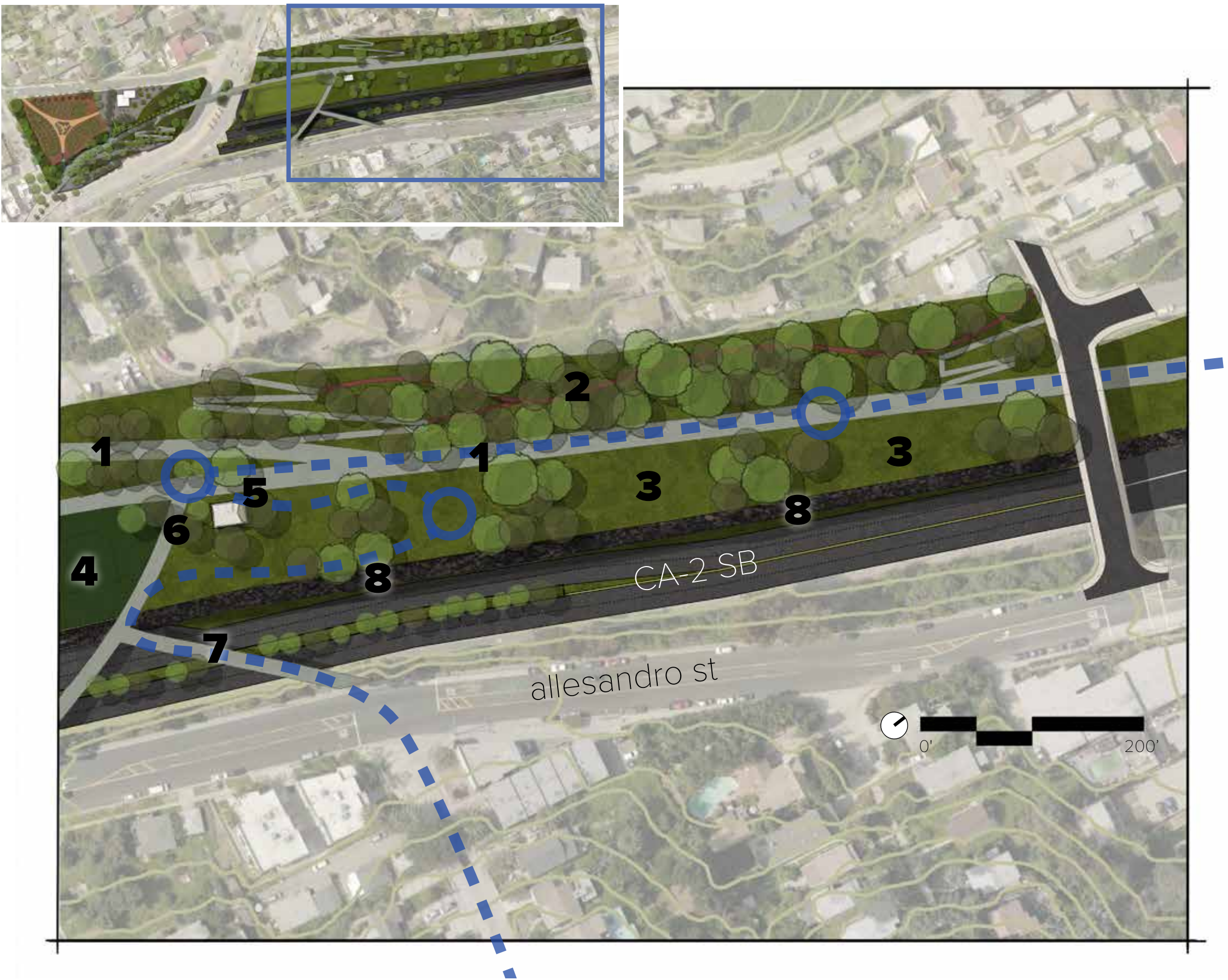
a day in the life...

let's go for a ride

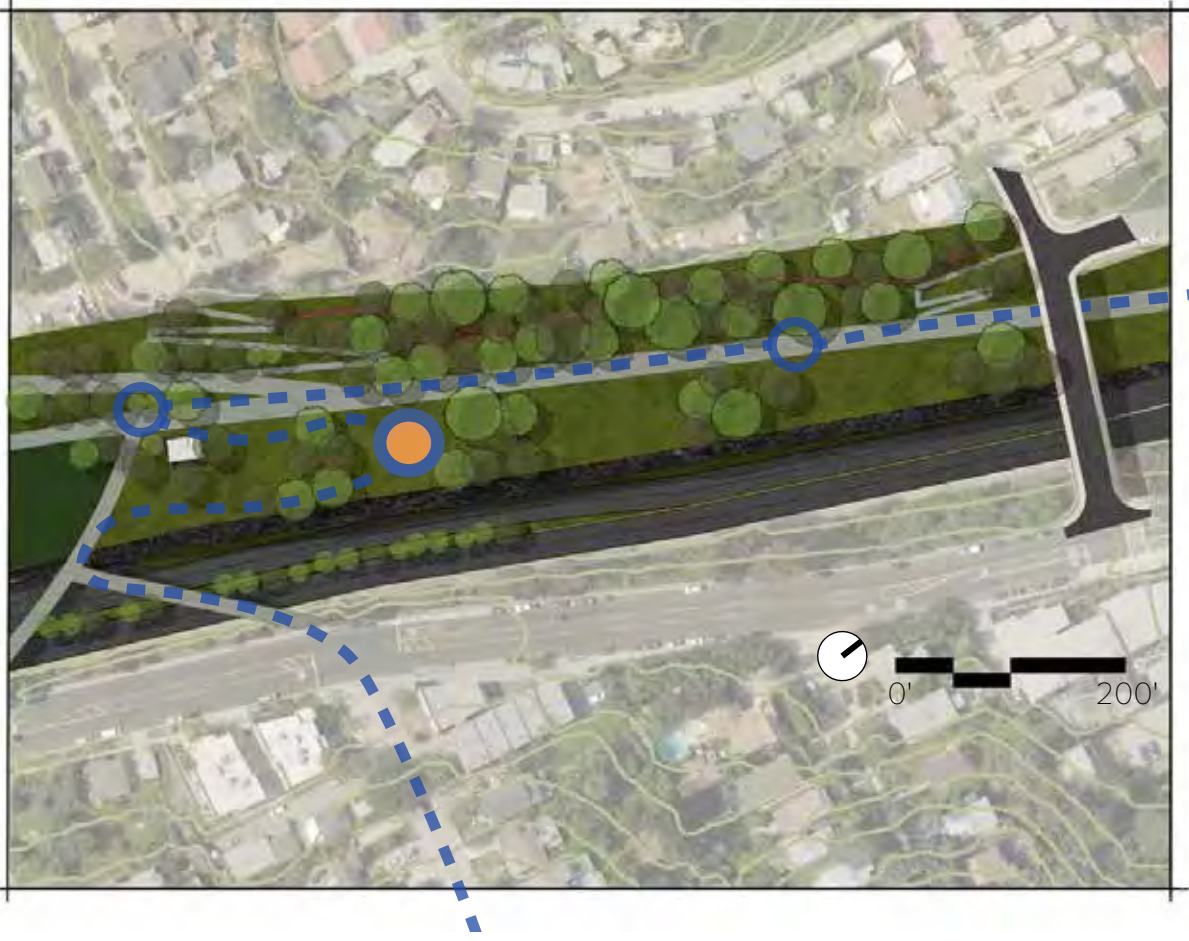
Maya and Marsha's picnic and bike-ride in The Valley.

Maya and Marsha have a quick picnic on the meadows alongside others enjoying the afternoon sun. After deciding they've maybe had a bit too much sun, they head to the bike share rack to pick up a couple of bikes so they can head north on the trail to the LA river bike path.

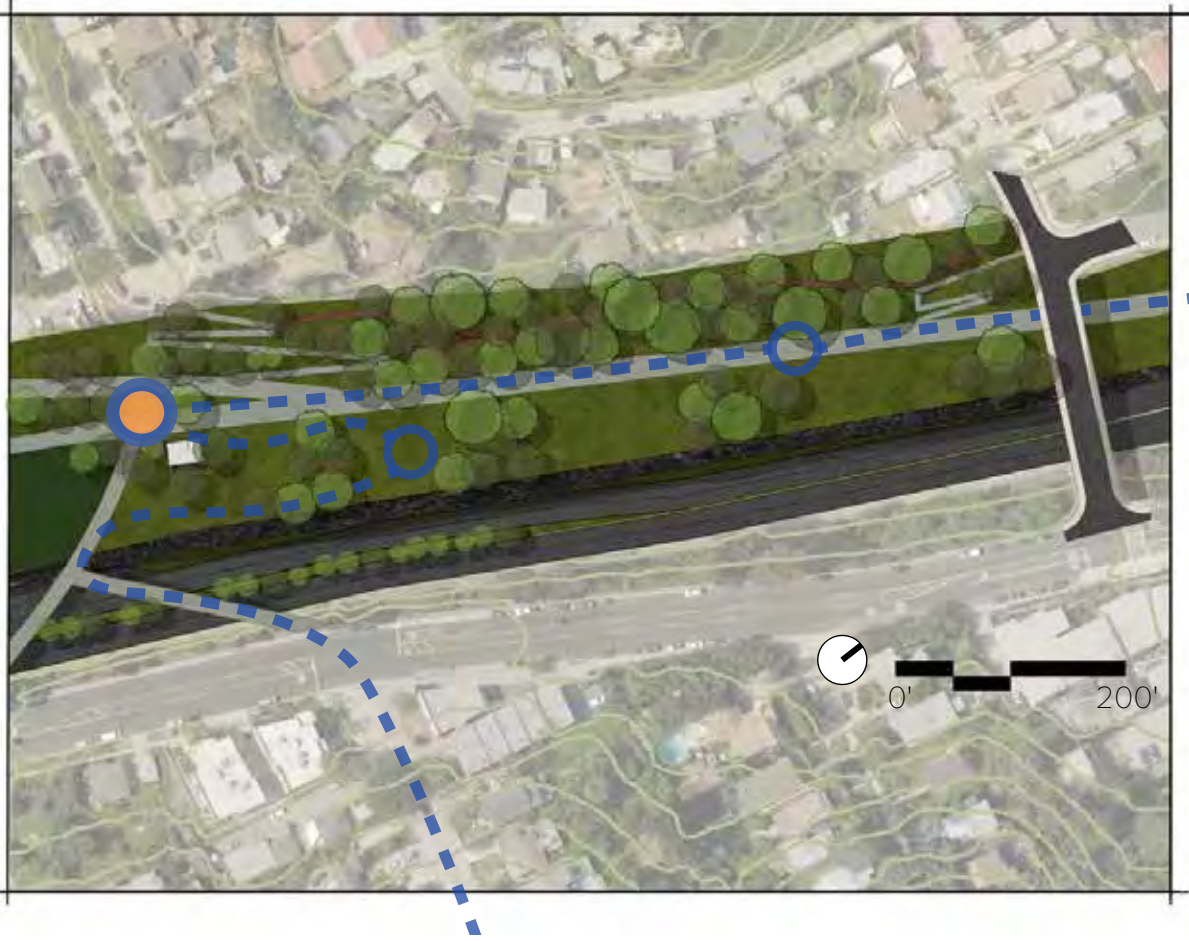
- 1 multi-use trail
- 2 wooded trail
- 3 meadows
- 4 multi-use field
- 5 restroom
- 6 bike-share station
- 7 allesandro pedestrian bridges
- 8 gabion retaining wall



catching up and catching some sun on the meadow



picking up bikes from the bike-share station



headed up the multi-use trail on the way to the LA river path

