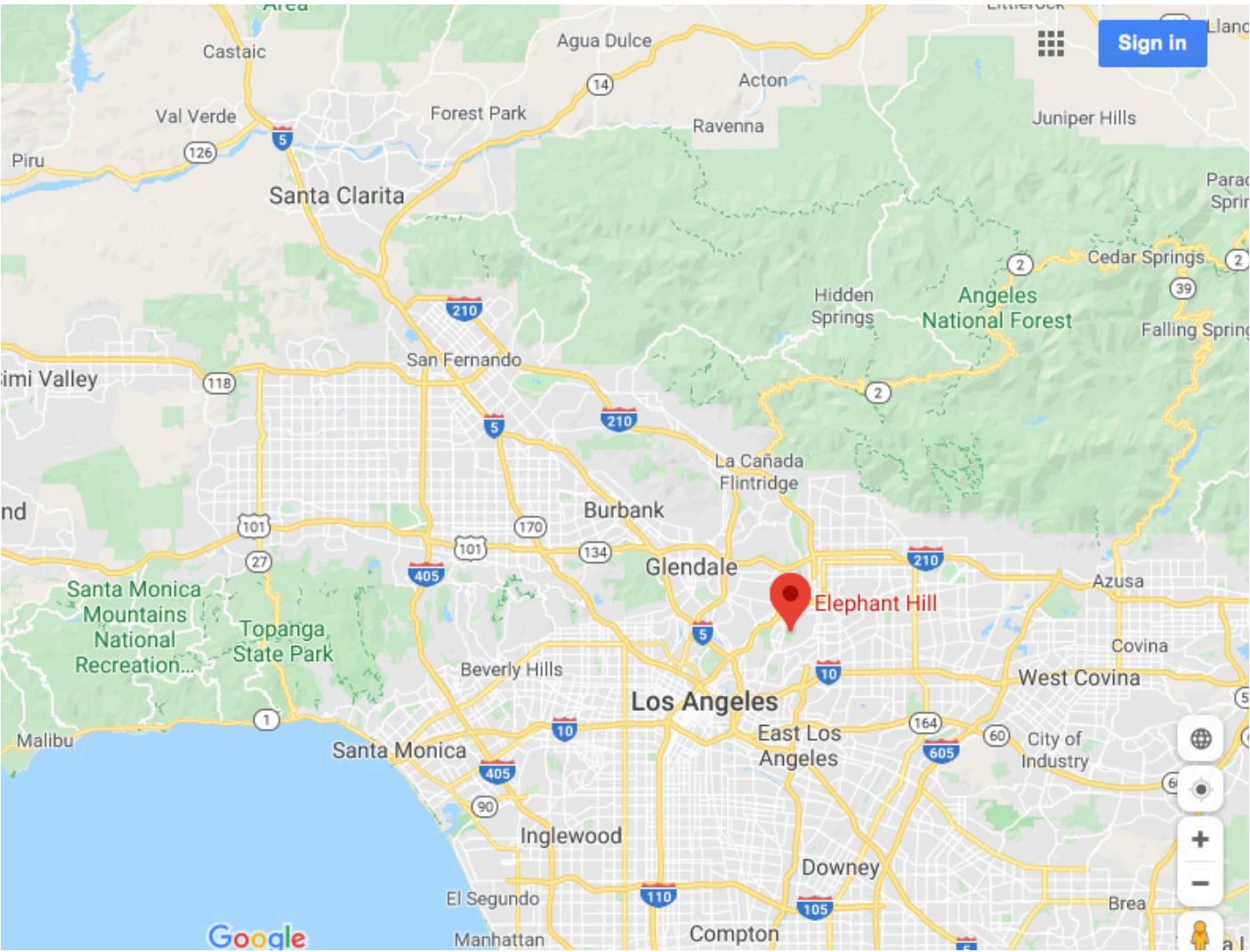


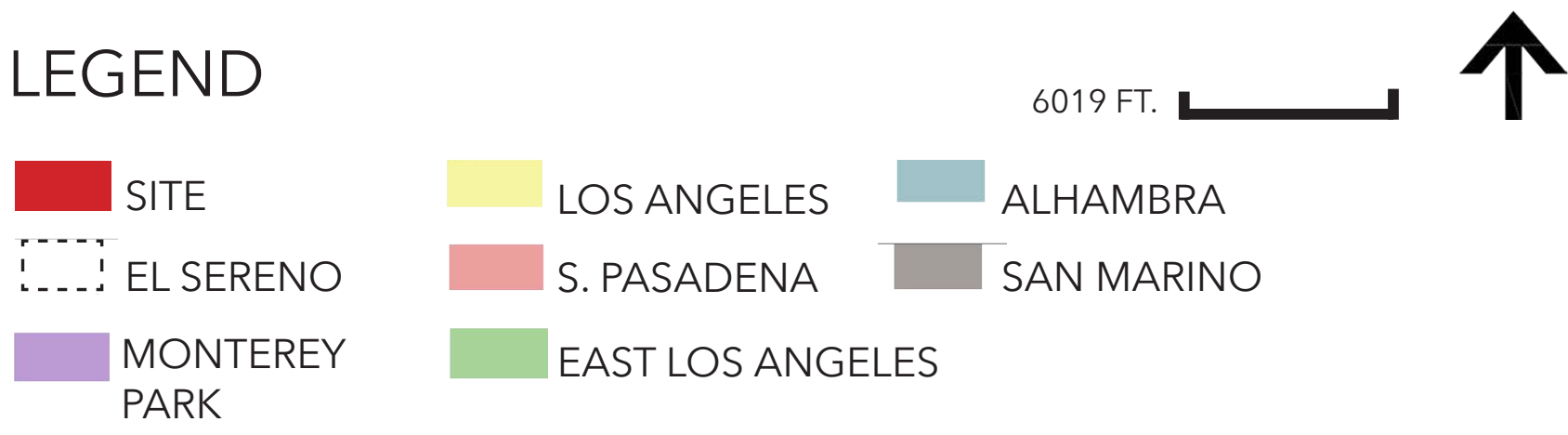
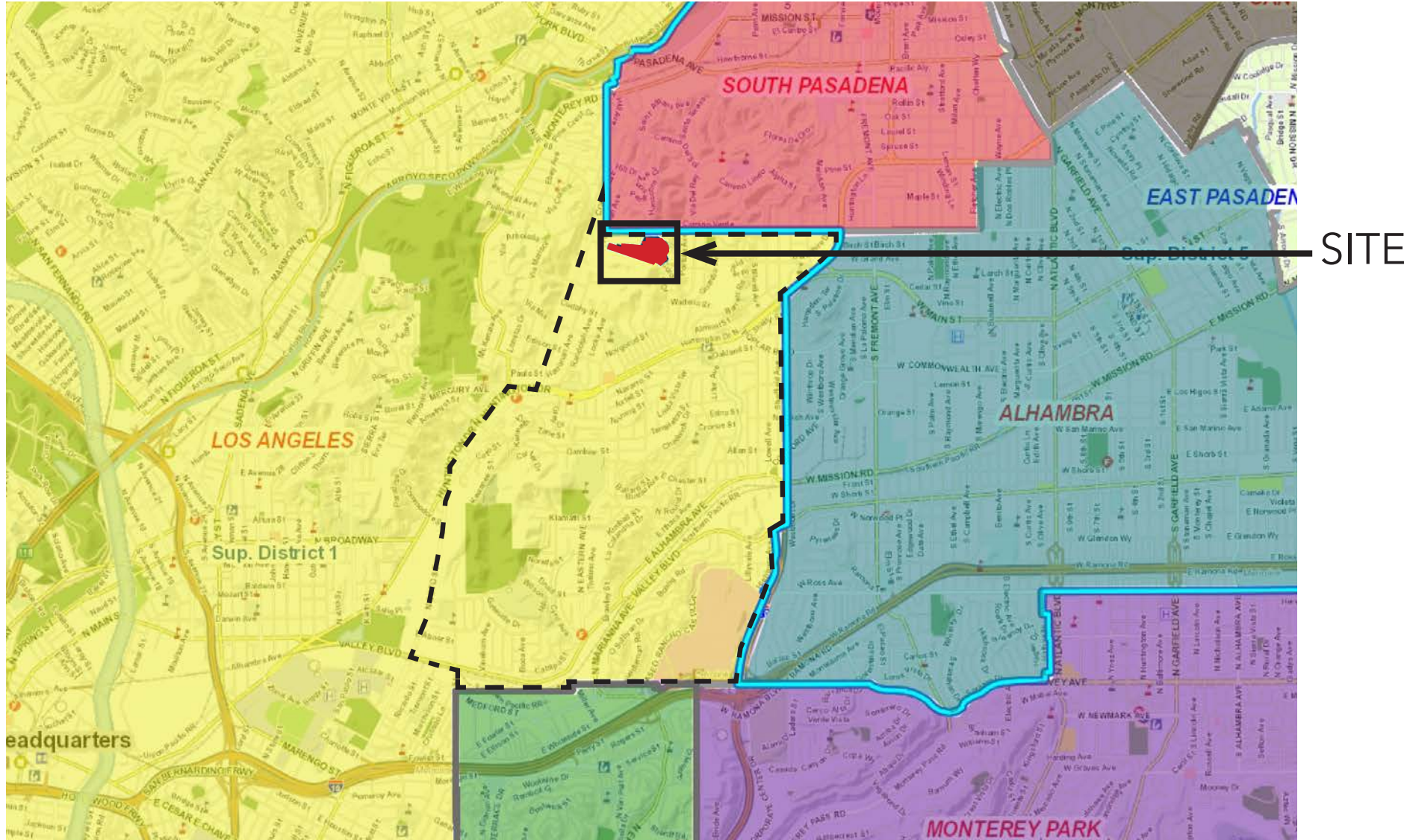
LOCATION:



5 miles — ↑

Elephant Hill is located 7 miles Northeast of downtown Los Angeles in the 4.1 square mile community of El Sereno.

VICINITY MAP:



Neighboring communities:
Alhambra, Boyle Heights, East Los Angeles, Lincoln Heights, Montecito Heights, Monterey Park and South Pasadena.
Council District 14 (Los Angeles)

STATEMENT:

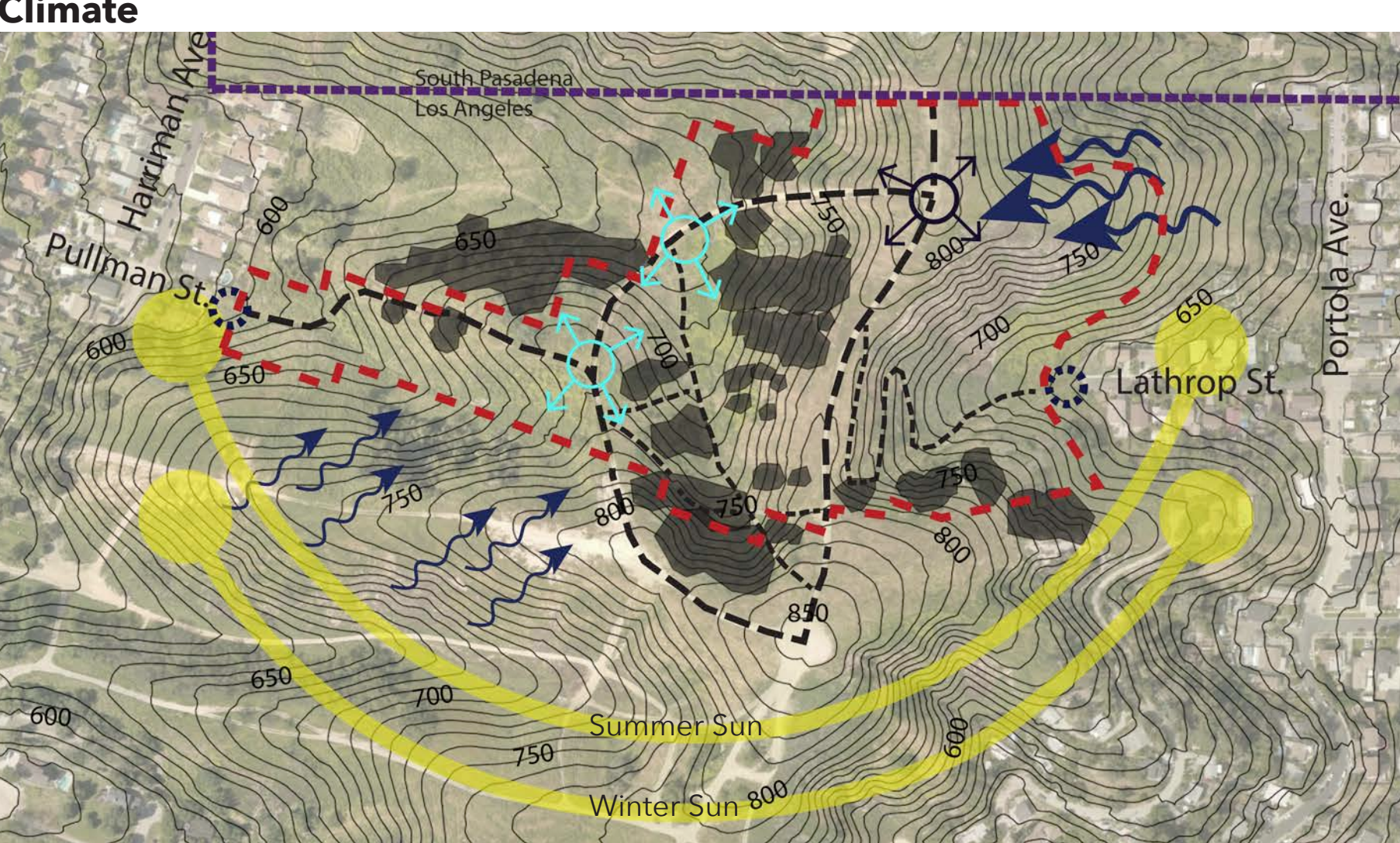
This project will transform Elephant Hill, an underdeveloped and neglected natural area, into a passive recreational park through the use of landscape architectural and restoration principles. The proposed park will provide opportunities for connection and recreation and will also re-establish a more native landscape that will reduce erosion and fire risk and provide wildlife habitat.



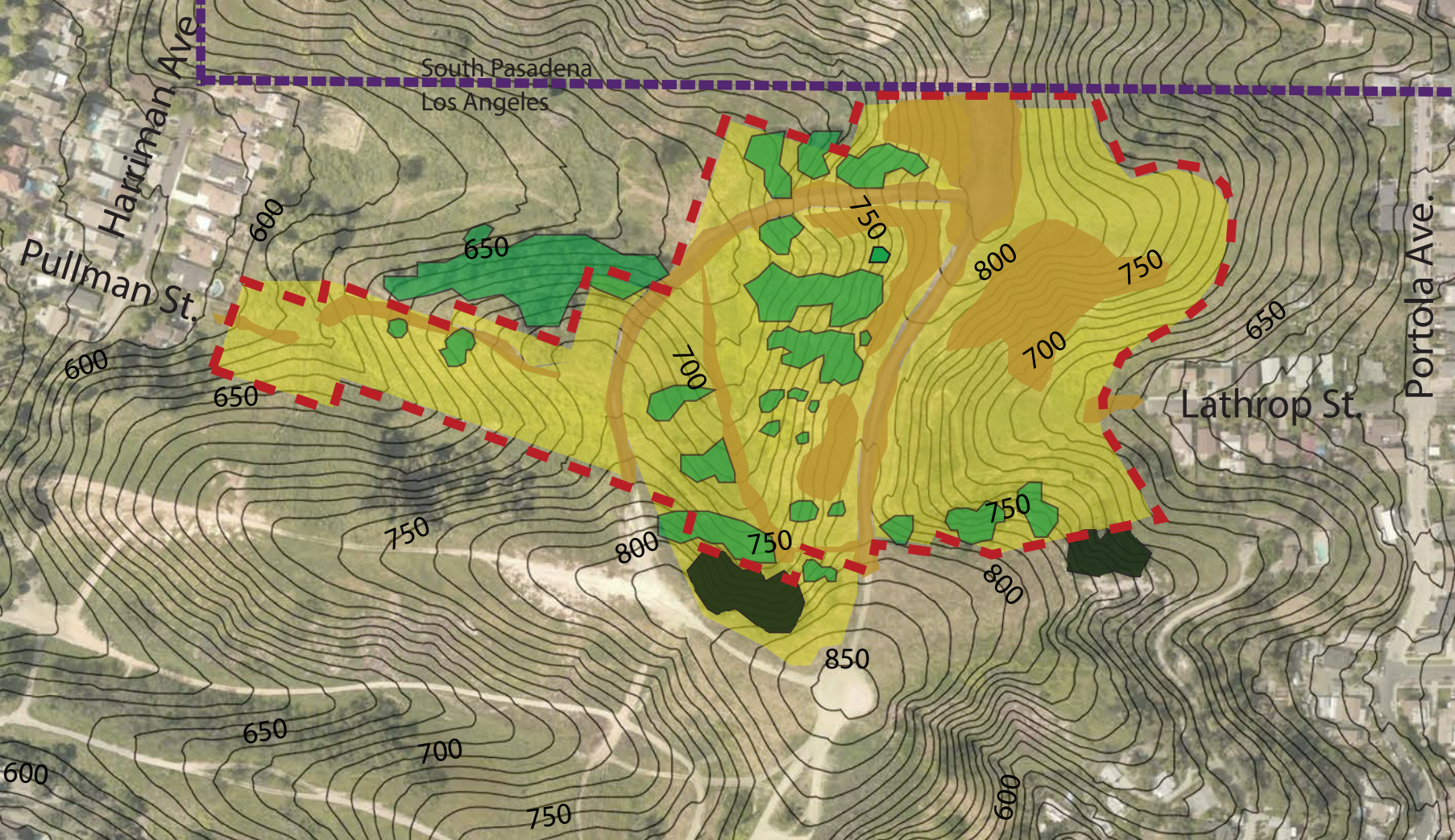
GOALS AND OBJECTIVES:

1. Create a Passive Regional Open Space that is **safe** and **accessible**.
 - Develop **trails** on Elephant Hill in order to make the site walkable and **accessible**.
 - Develop a park environment that people feel **safe** to be in by providing wayfinding devices and **signage**, informing visitors of the site, it's **history**, and the importance of its **wildlife** community.
2. **Restore** and **preserve** Elephant Hill, one of the last and largest natural areas in northeast Los Angeles.
 - **Restoring** and enhancing sustainable plant communities on the site such as **coastal sage scrub** and **walnut woodland** in order to keep intact the wild **nature** people can enjoy and experience.
3. To create a **sustainable** environment that connects people to the natural world.
 - Provide **education** and **recreation** for the people in the surrounding communities while also incorporating protection and **preservation** of **wildlife habitat**

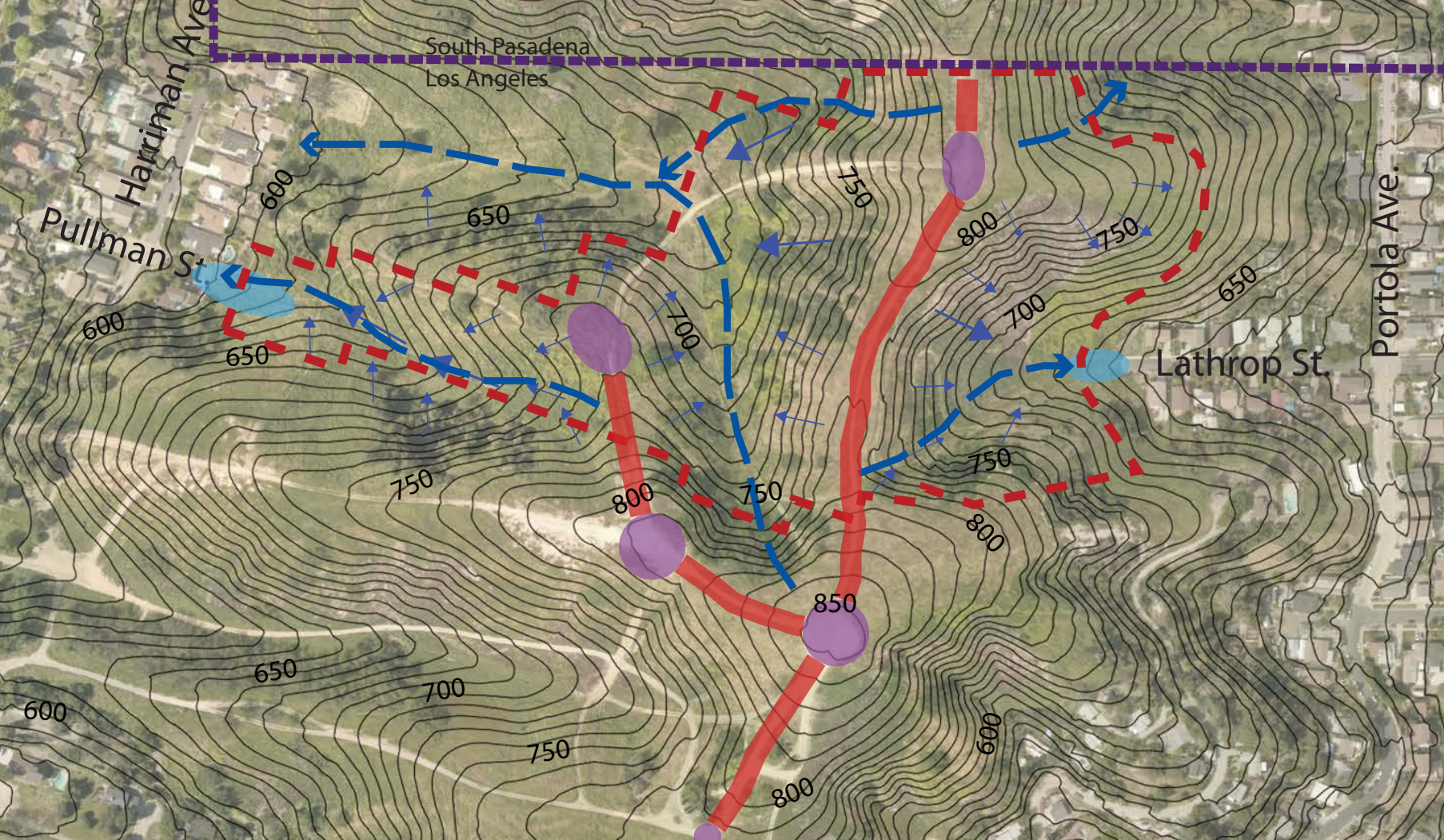
SITE ANALYSIS:



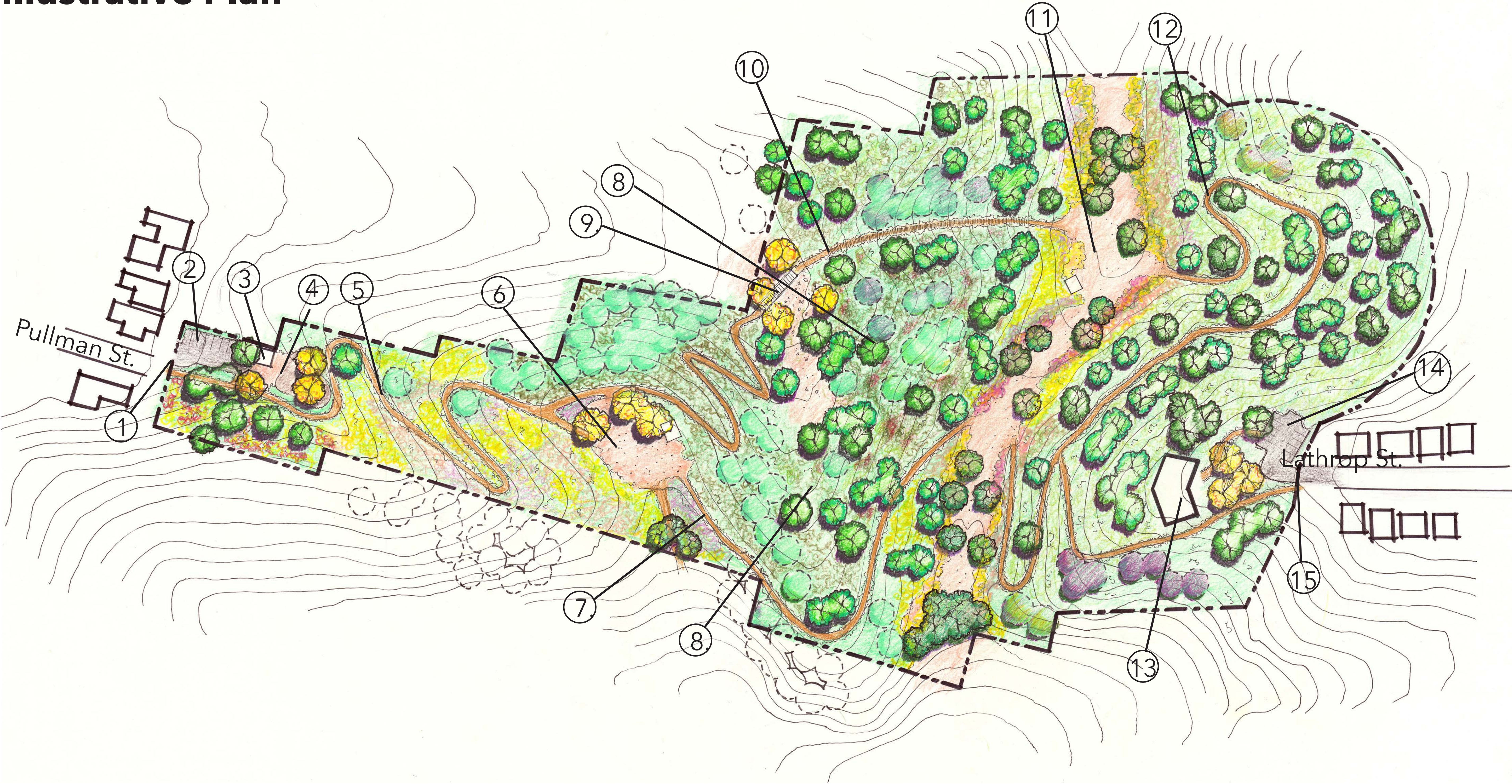
Existing Trees/Erosion/Invasive Plant Species



Water Flow



Illustrative Plan



Legend

- ① Pullman St. Entrance

② Parking Lot (permeable material)

③ Restrooms

④ Nature Play Area

⑤ California Shrub Trail
- ⑥ Wildlife Viewing/Picnic Area

⑦ Wildlife Trail

⑧ Preserved Wildlife Habitat Area

⑨ Crossroads Bridge

⑩ Stairway to Heaven
- ⑪ Scenic Overlook

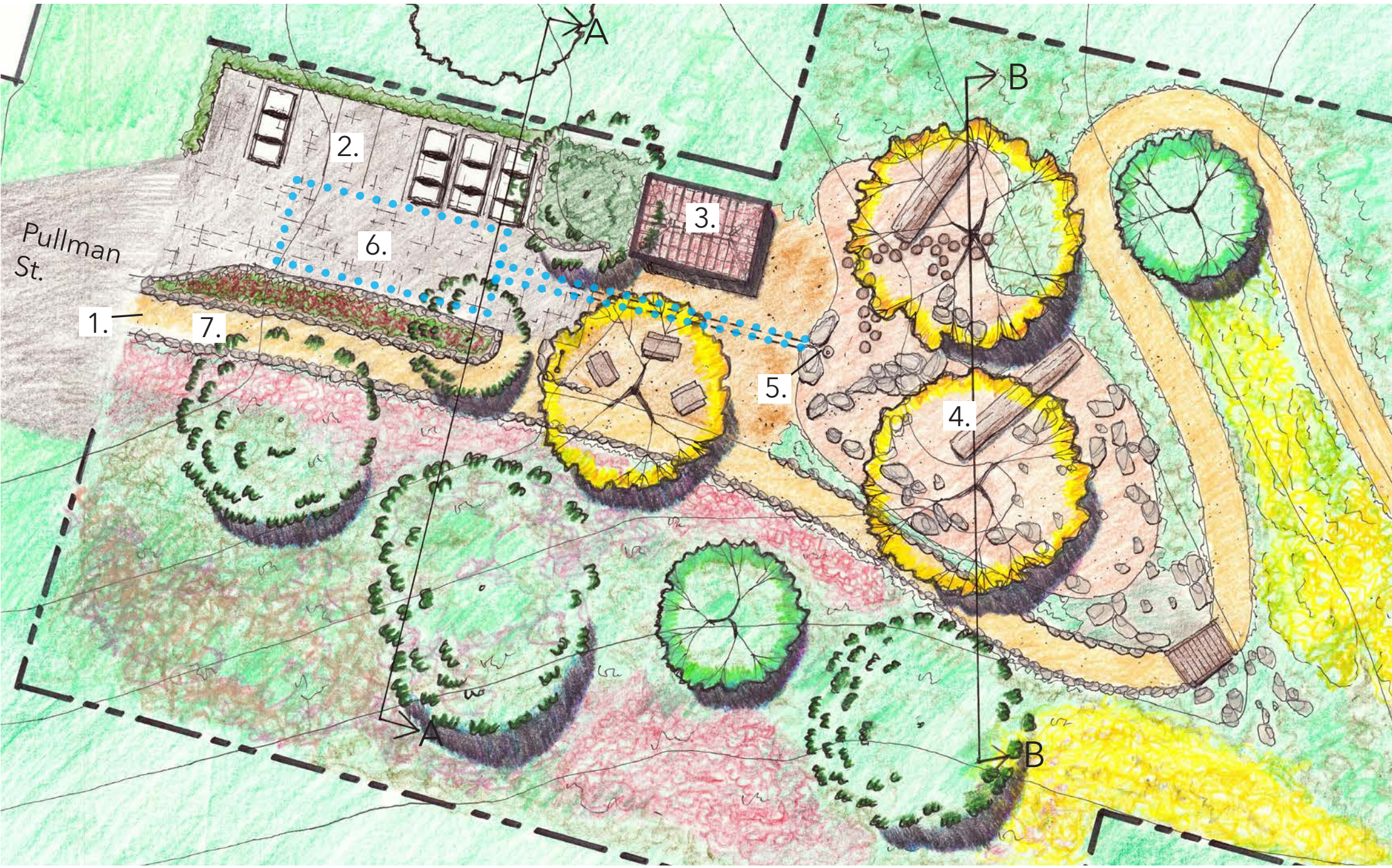
⑫ Oak/Walnut Forest Trail

⑬ Nature Center

⑭ Parking Lot (permeable material)

⑮ Lathrop St. Entrance

Enlargement: Pullman St. Entrance



- Legend
1. Entrance

2. Parking Lot (permeable material)

3. Restroom

4. Nature Play Area/ Bioswale

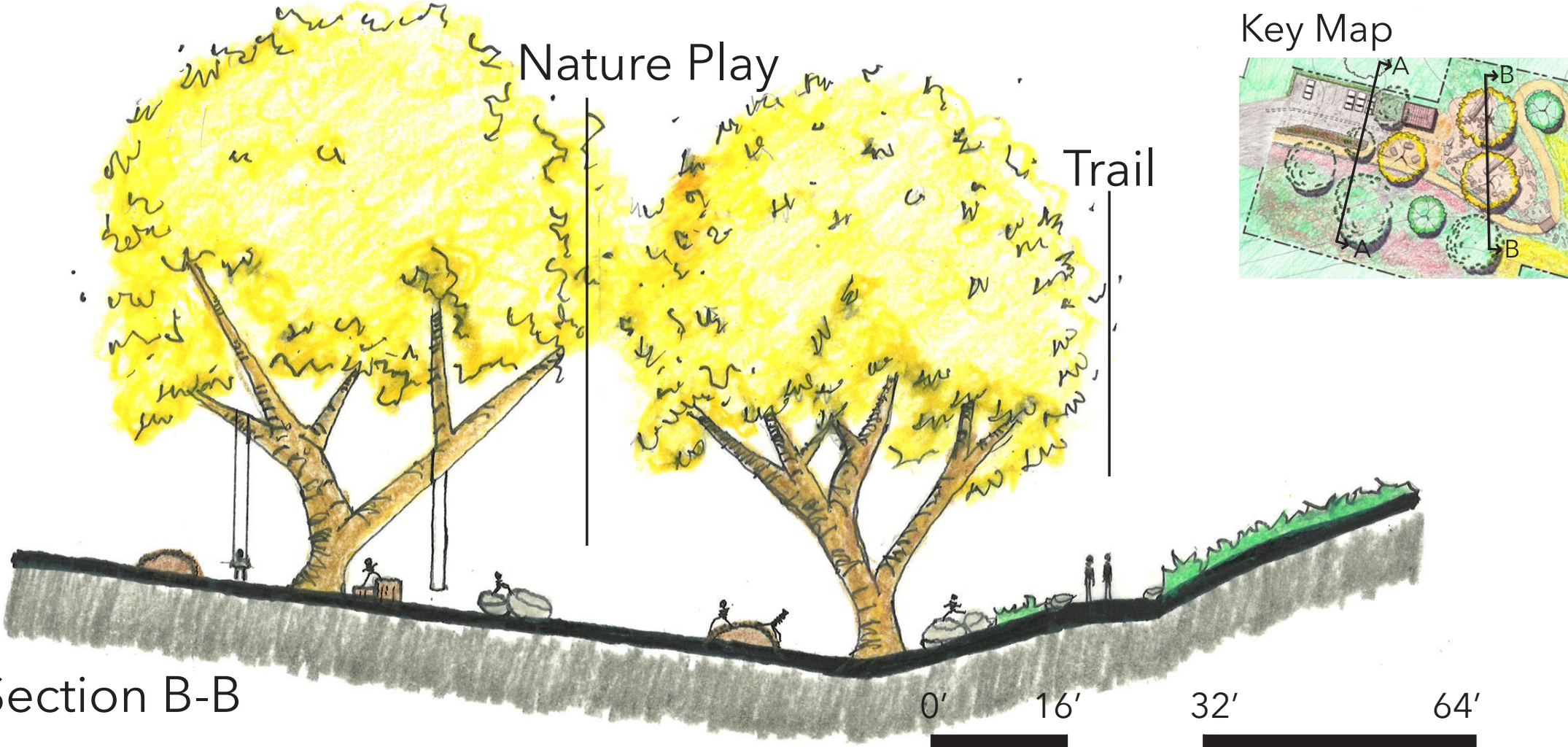
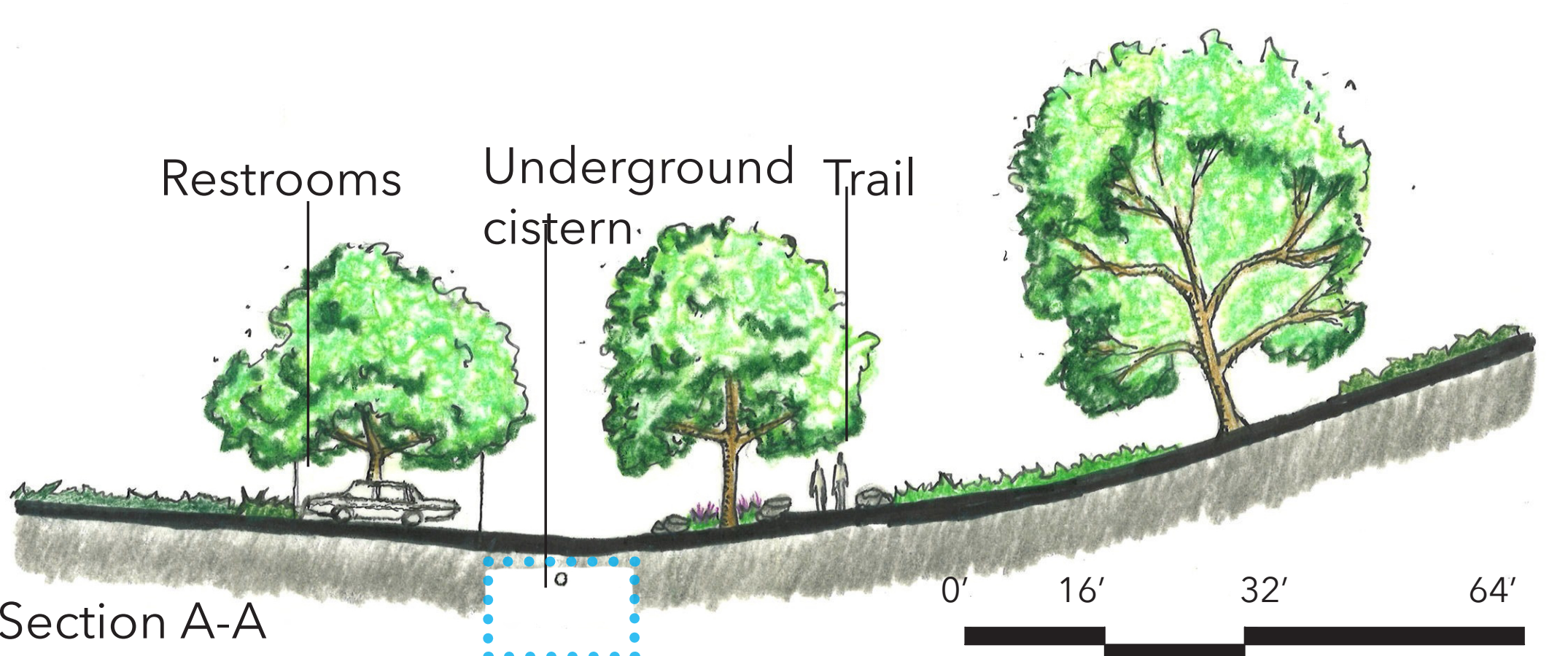
5. Drainage inlet from bioswale to connect to underground cistern

6. Underground cistern

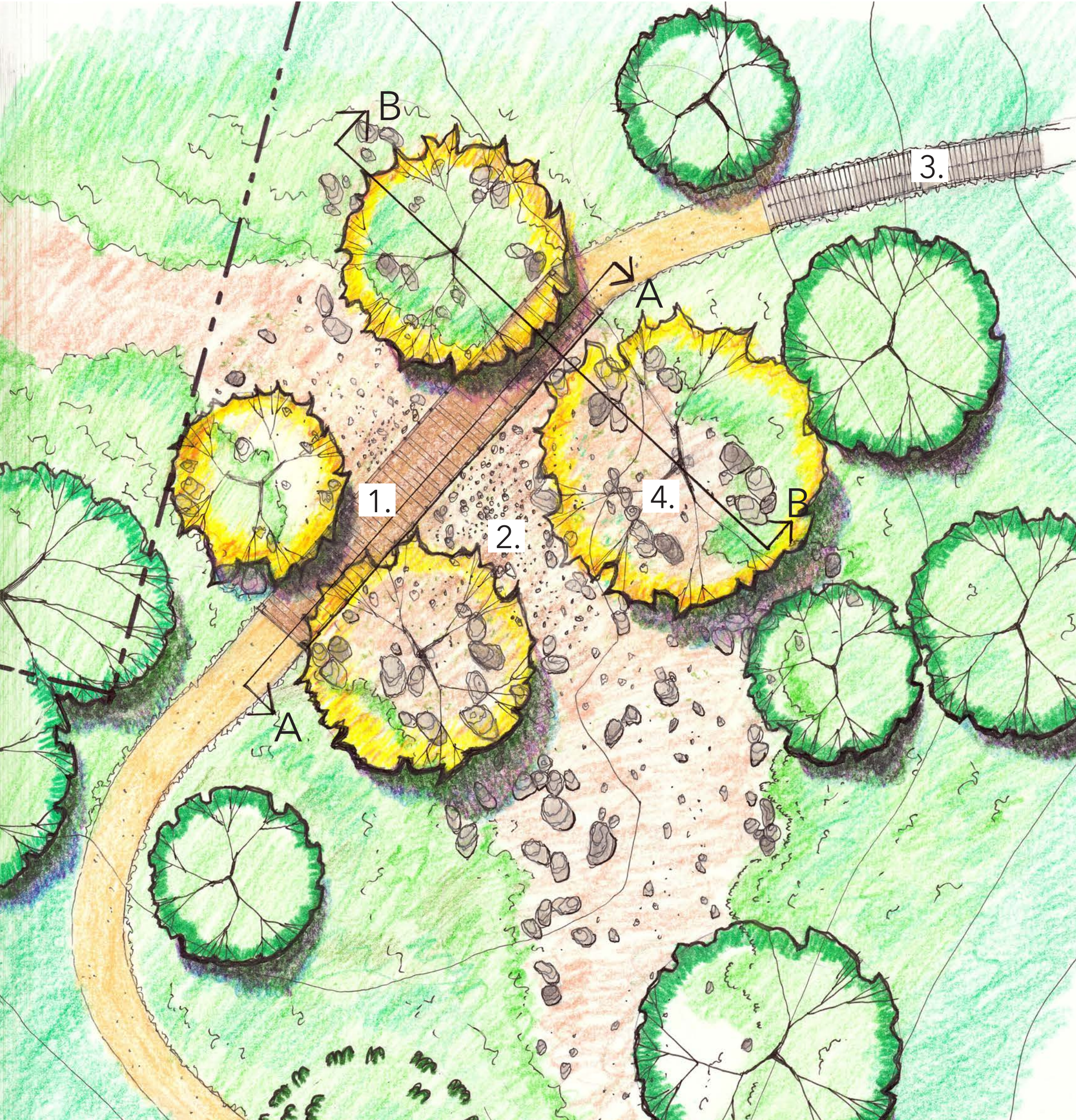
7. Decomposed granite path/trail



Sections A-A and B-B: Pullman St. Entrance



Enlargement: Bridge and Bioswale

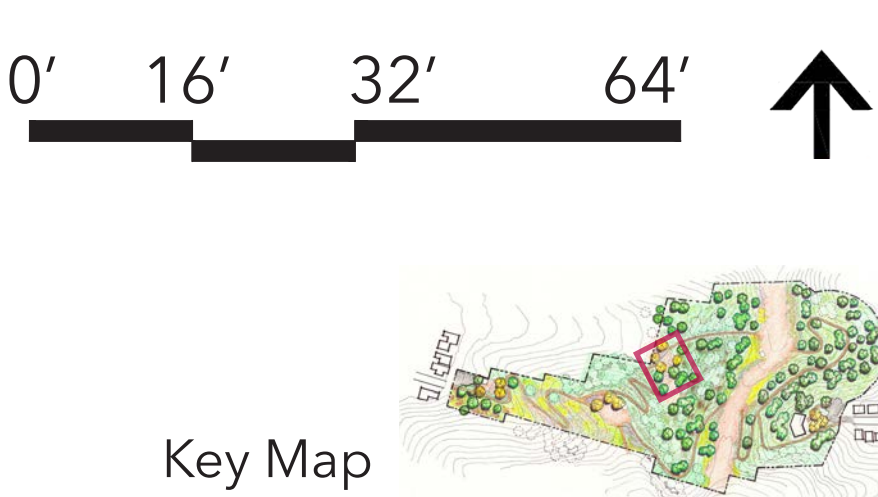


- Legend
1. Bridge

2. Bioswale

3. Stairs

4. Platanus racemosa (California Sycamore)

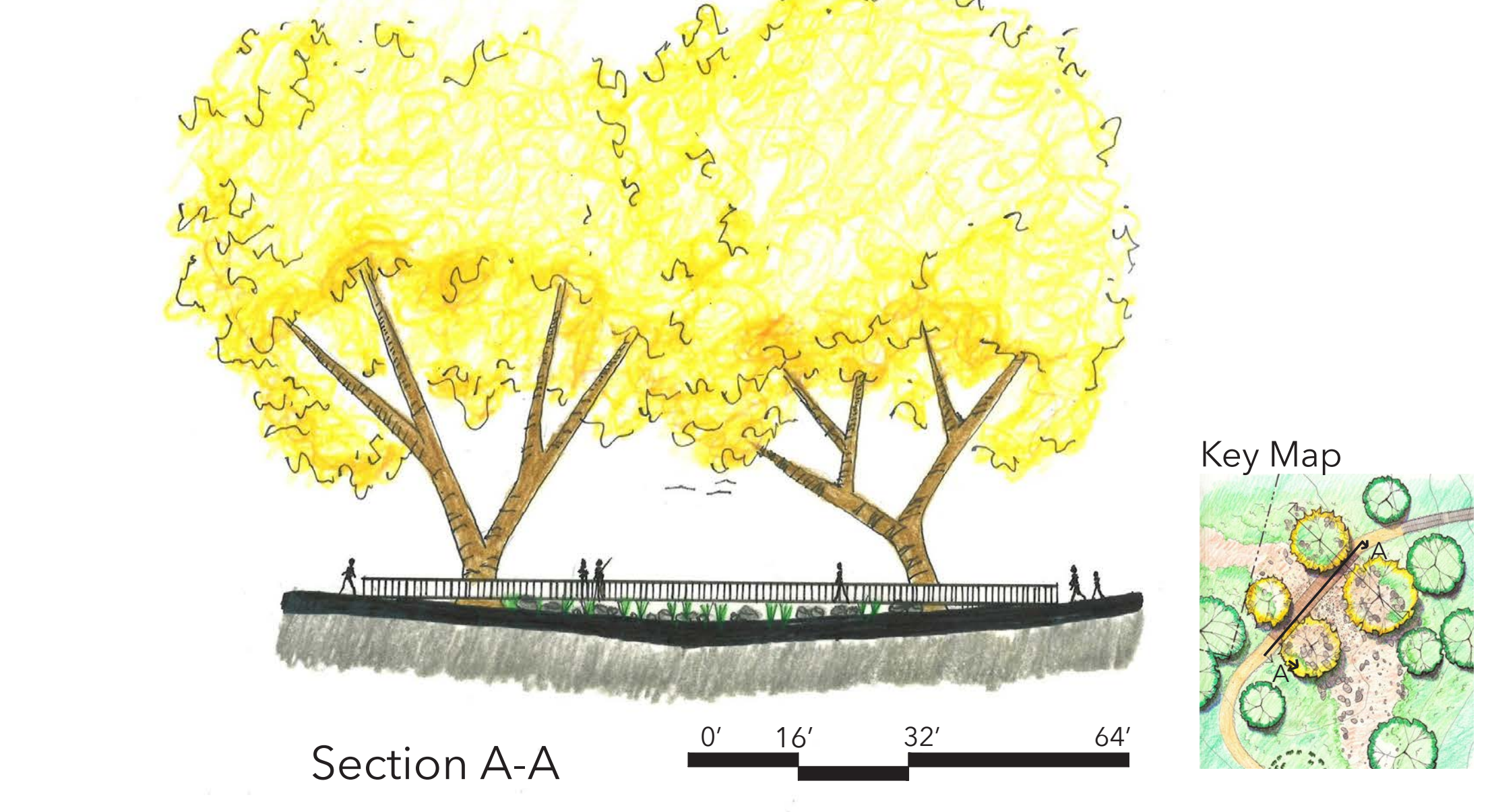


Perspective: Pullman St. Entrance



Nature Play/Bioswale

Section A-A



Perspective: Bridge



a. View from bridge into bioswale and wildlife habitat zone



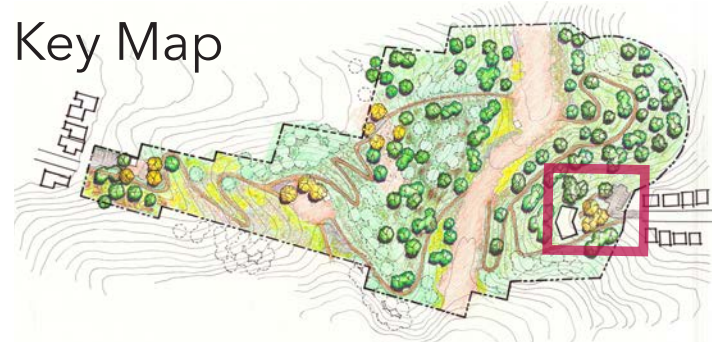
Enlargement: Nature Center



Legend

1. Vehicular Entrance
2. Parking Lot (permeable material)
3. Trail
4. Nature Center
5. Outdoor Deck
6. Bioswale
7. Drainage inlet from bioswale to connect to underground cistern
8. Cistern

0' 16' 32' 64' ↑



Perspective b: Biowsale/Nature Center



a. Bioswale/Trails/Nature Center

Perspective a: Nature Center



a. Nature Center/Trails/Parking Lot