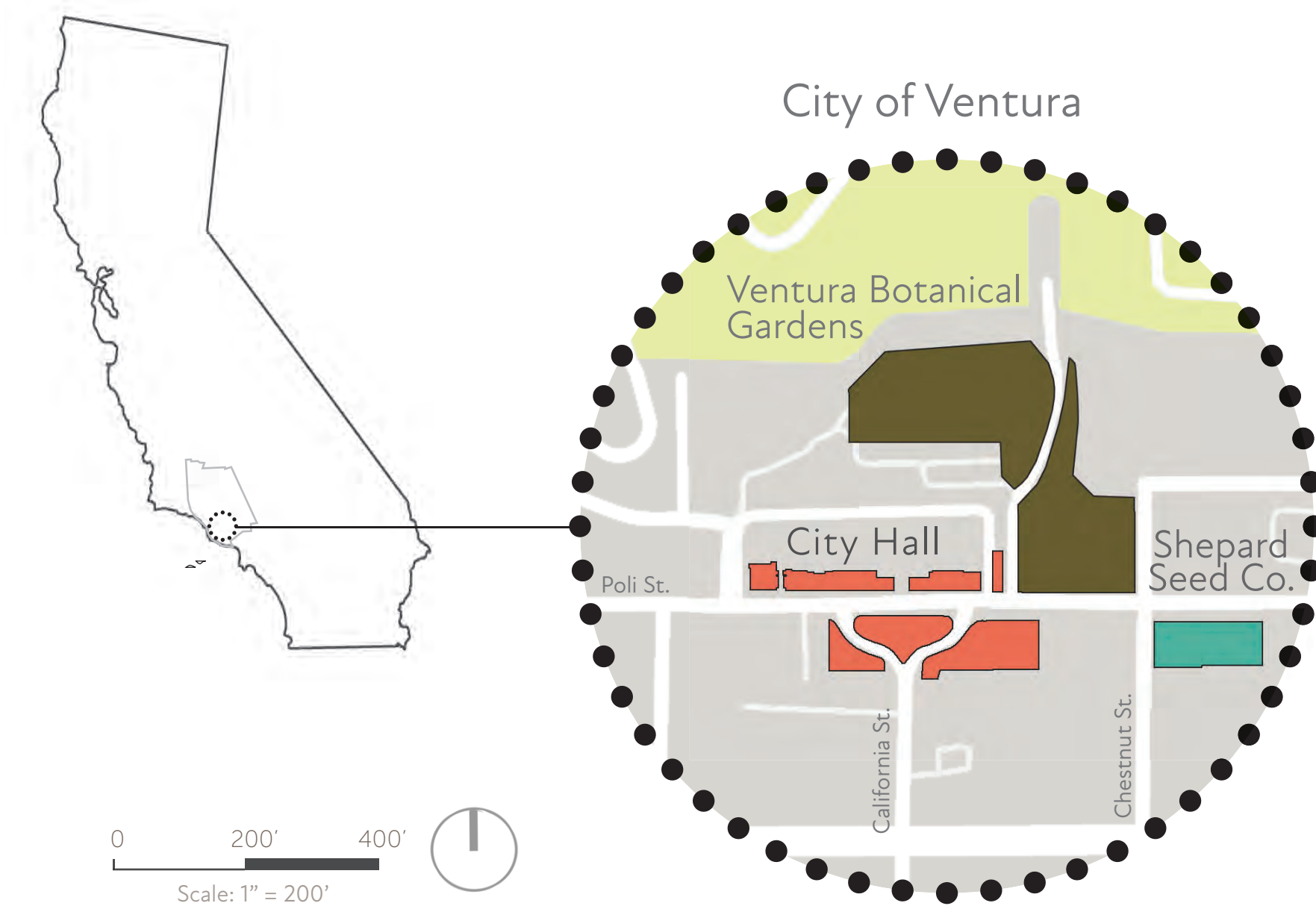


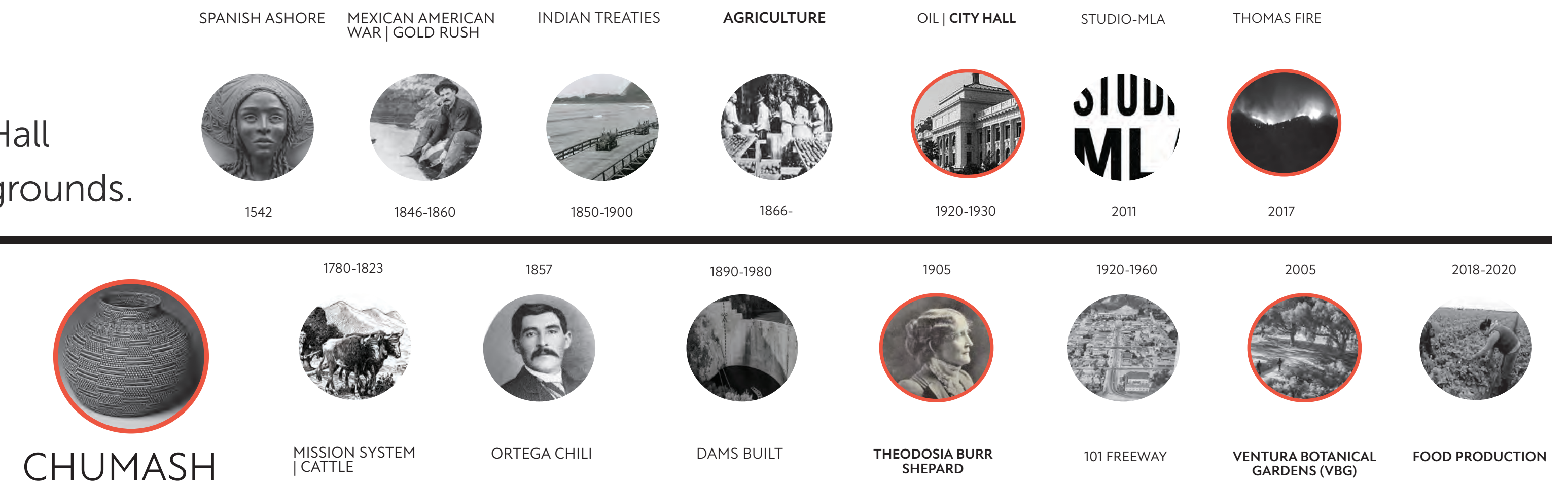
## LOCATION



## PROJECT STATEMENT

Through landscape, history and food  
this project aims to distinguish and connect  
The Ventura Botanic Gardens, Ventura City Hall  
and what remains of the Shepard Seed Co. grounds.

## HISTORY



## PROJECT JUSTIFICATION

### CONDITION:

Coastal  
Drought, low rain  
Wildfire by climate change  
Soil fertility  
Mild climate

### \*Animating the public realm

\*Sustainable infrastructure  
California's commitment to  
carbon neutrality

### \*Ventura's unique character

\*California's new art city

\* Downtown Specific Goal of Ventura

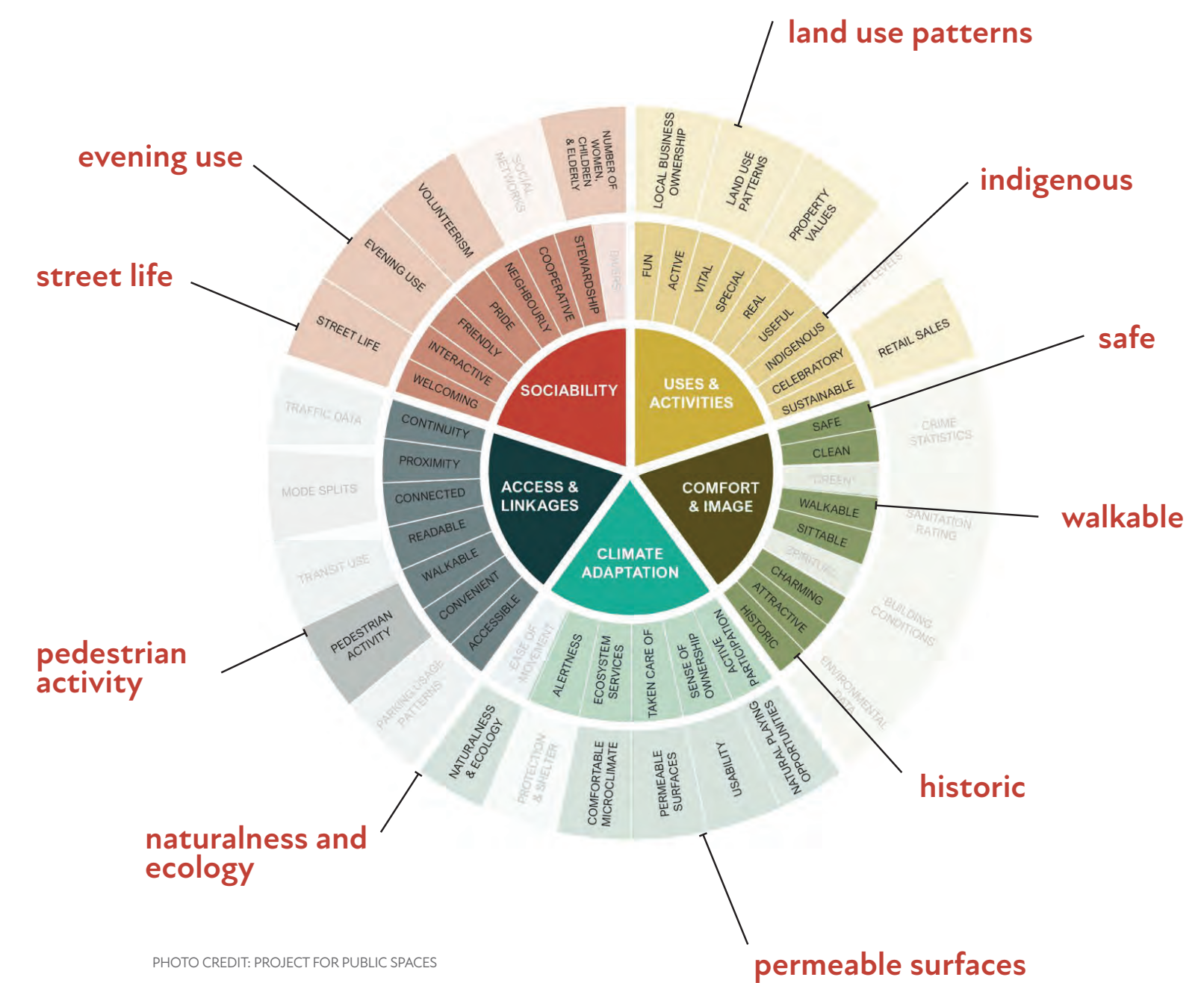
### DESIGN RESPONSE:

Soil building | views  
Rainwater capture  
Native species | Permeable surface  
Nutrient dense food  
Outdoor education

Greater pedestrian access to public space  
Multifunctional spaces  
Water harvesting  
Hillside stabilization  
Carbon sequestration from improved  
agriculture and re-vegetation.

Commemorate two Ventura  
horticulturists and coastal heritage  
Local craft and statuary

## METHODOLOGY: PROJECT FOR PUBLIC SPACES



## USERS

### RESIDENTS:

11,741  
Hispanic Families  
Seniors Surfers  
Artists Historians  
Environmentalists  
Food Growers

### EMPLOYEES:

64,329 employees  
5,846 businesses  
County of Ventura  
Ventura School District  
City of San Buenaventura

### STUDENTS:

17 Public, Charter  
and/or Parochial  
Grade Schools  
within 5 miles.

### TOURISTS:

2.68 million/yr  
The City of Ventura relies  
heavily on tourism throughout  
the summer months.

## GOALS + OBJECTIVES

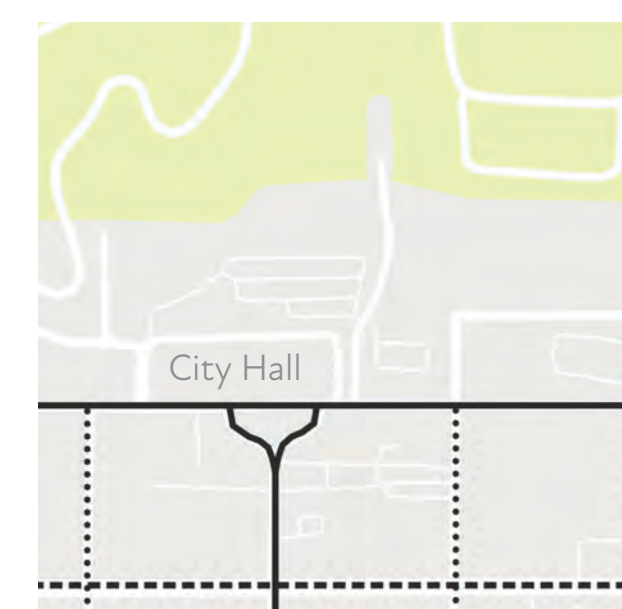
- USE available rain water
- UPDATE City Hall Landscape
- DEMONSTRATE sustainable land management
- LOCATE + ACCESS VBG from Poli St.
- RETROFIT large open spaces for place making
- SUPPORT public health
- TEACH history of Ventura
- CONNECT people to place
- ENCOURAGE local commerce of food
- berms/swales
- remove turf
- agroecology
- gateway
- restroom
- greater pedestrian access to longer
- cultivated species
- experimental ecology
- create supply chain of farmers for restaurants
- curb cuts
- add shade trees
- soil building
- pedestrian path
- permeable surface
- solar fridge
- more scenic walking paths
- historic signage
- nutrition class
- local craft
- farm plot
- permeable surfaces
- terracing
- organic edible landscape
- hillside stability

## OBSERVATIONS

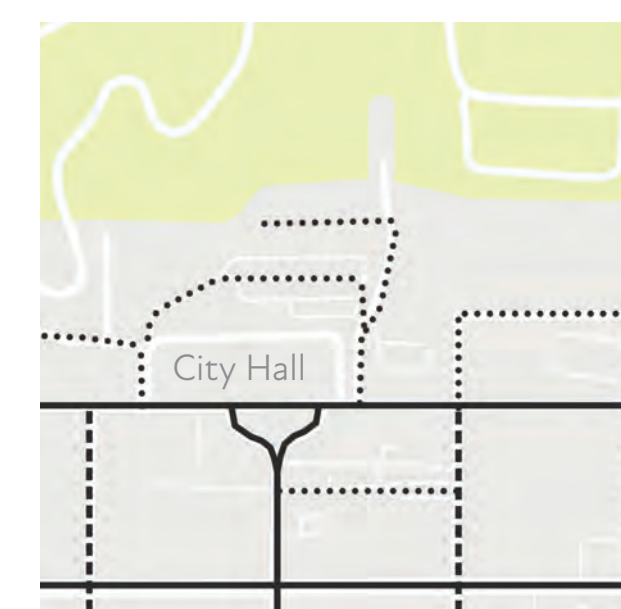
### Pedestrian



### Vehicular



### Bicycle

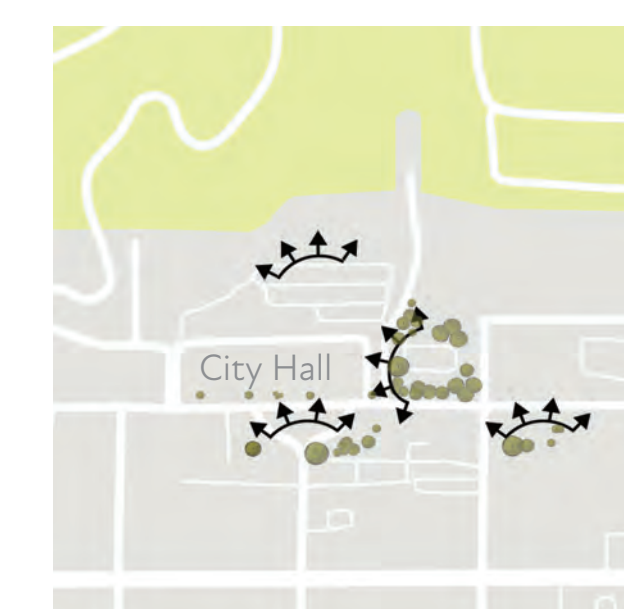


### Climate



Combined Area: 3.15 acres  
Seasonal Rain: 13.12 in.  
Ave ETo: 3.86 in./mo  
USDA Zone: 10a  
Sunset Zone: 24  
Ave. High: 76 f  
Ave. Low: 44 f

### Vegetation + Views



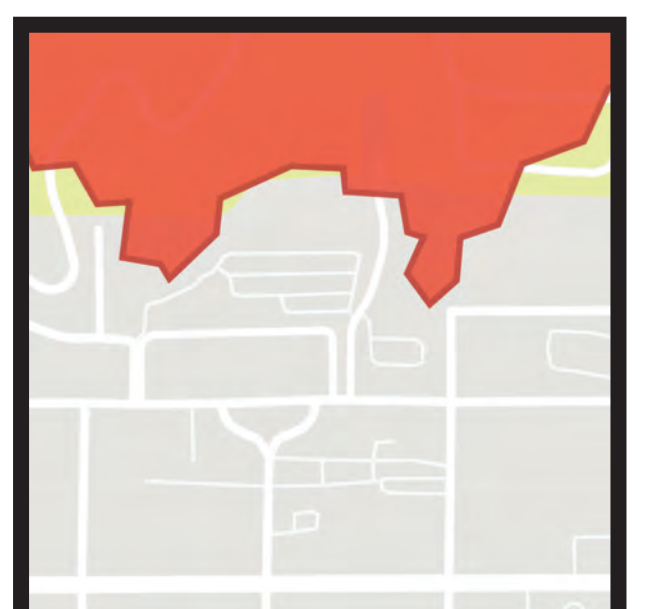
Existing Vegetation  
Viewshed

### Parcels + Historic



Existing Structures  
Historic Value

### Recent Wildfire Area



Area of Thomas Fire

0 500' 1000'  
Scale: 1" = 500'

AREA 1



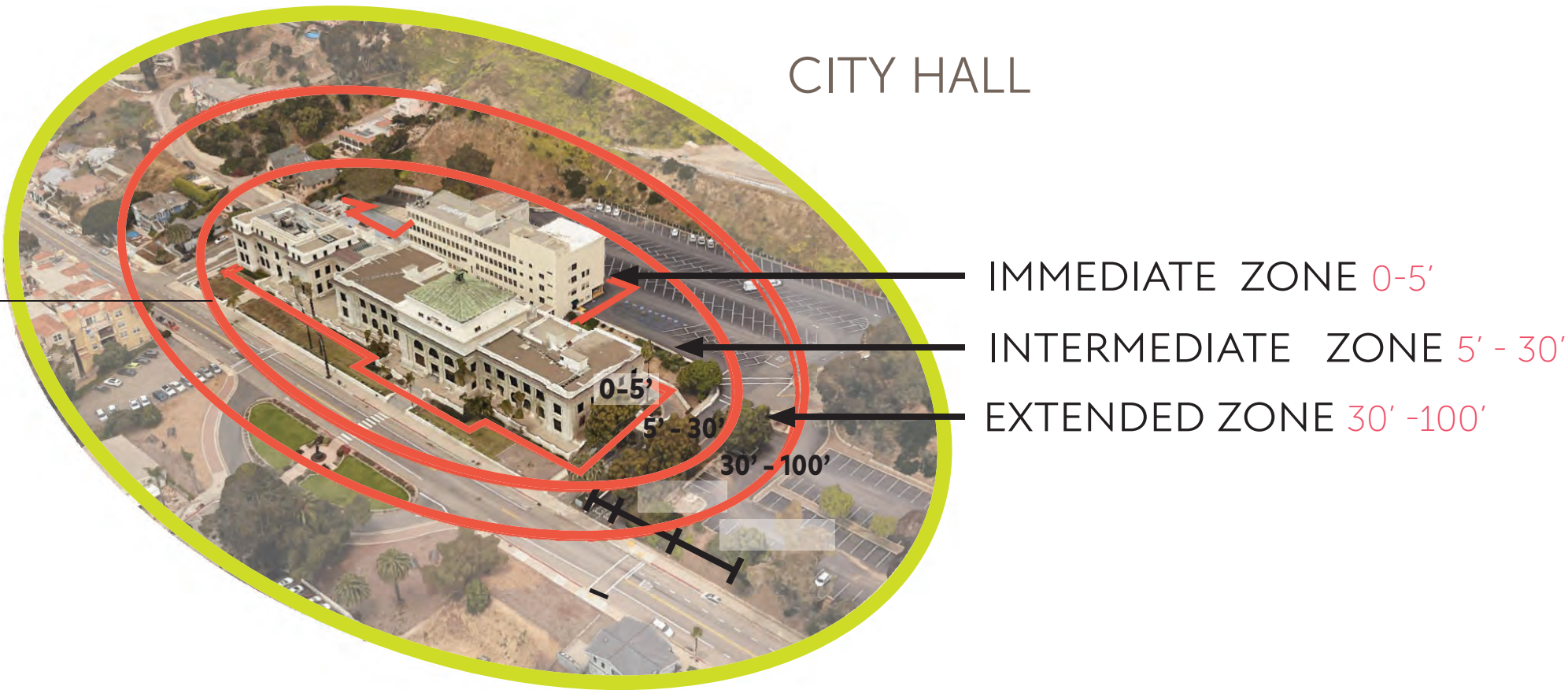
Entrance to Ventura Botanical Gardens

- OPPORTUNITY**
- Demonstrate methods of stabilizing sand based soils on slopes and showcasing fire ecology
  - For trees in main parking lot to mitigate heat island effect and screen unattractive back of building
  - To access east parking lot off Chestnut st. to improve circulation
  - Replace a portion of asphalt with permeable surface

THOMAS FIRE



DEFENSIBLE SPACE



AREA 2

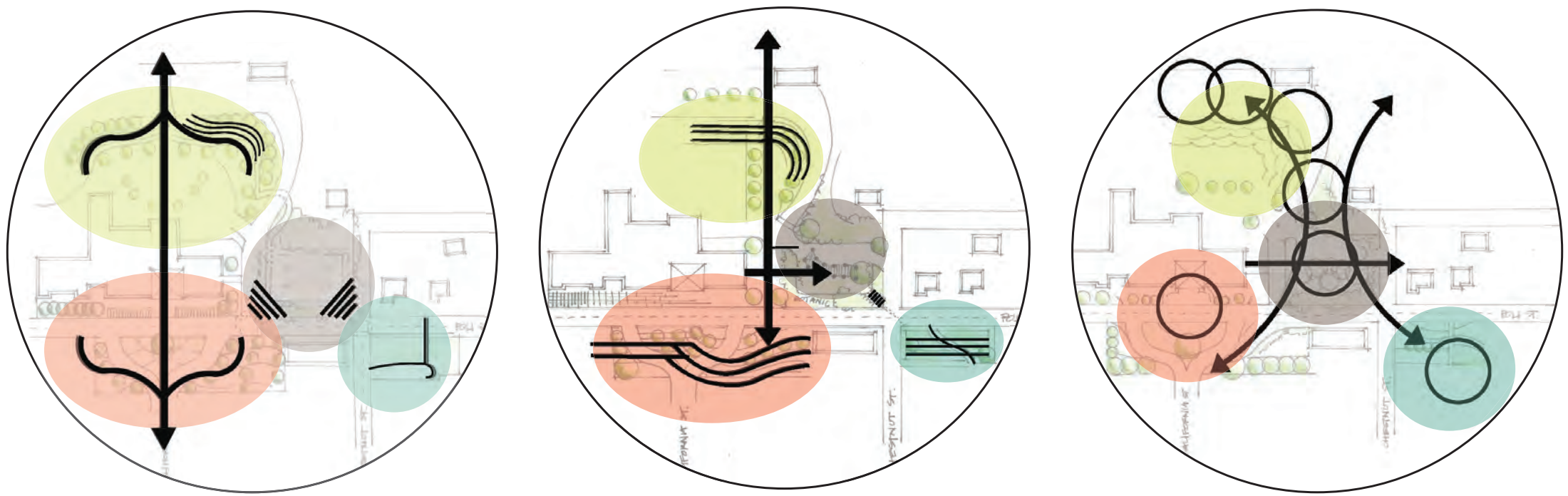


Landscape of City Hall

- OPPORTUNITY**
- Improved lighting, access, and more shaded seating
  - Open flex space with intimacy gradient and public fruit in front of City Hall
  - Public art near south end of center island
  - Viewing deck on south side of Poli east of island



CONCEPT DIAGRAMS



AREA 3

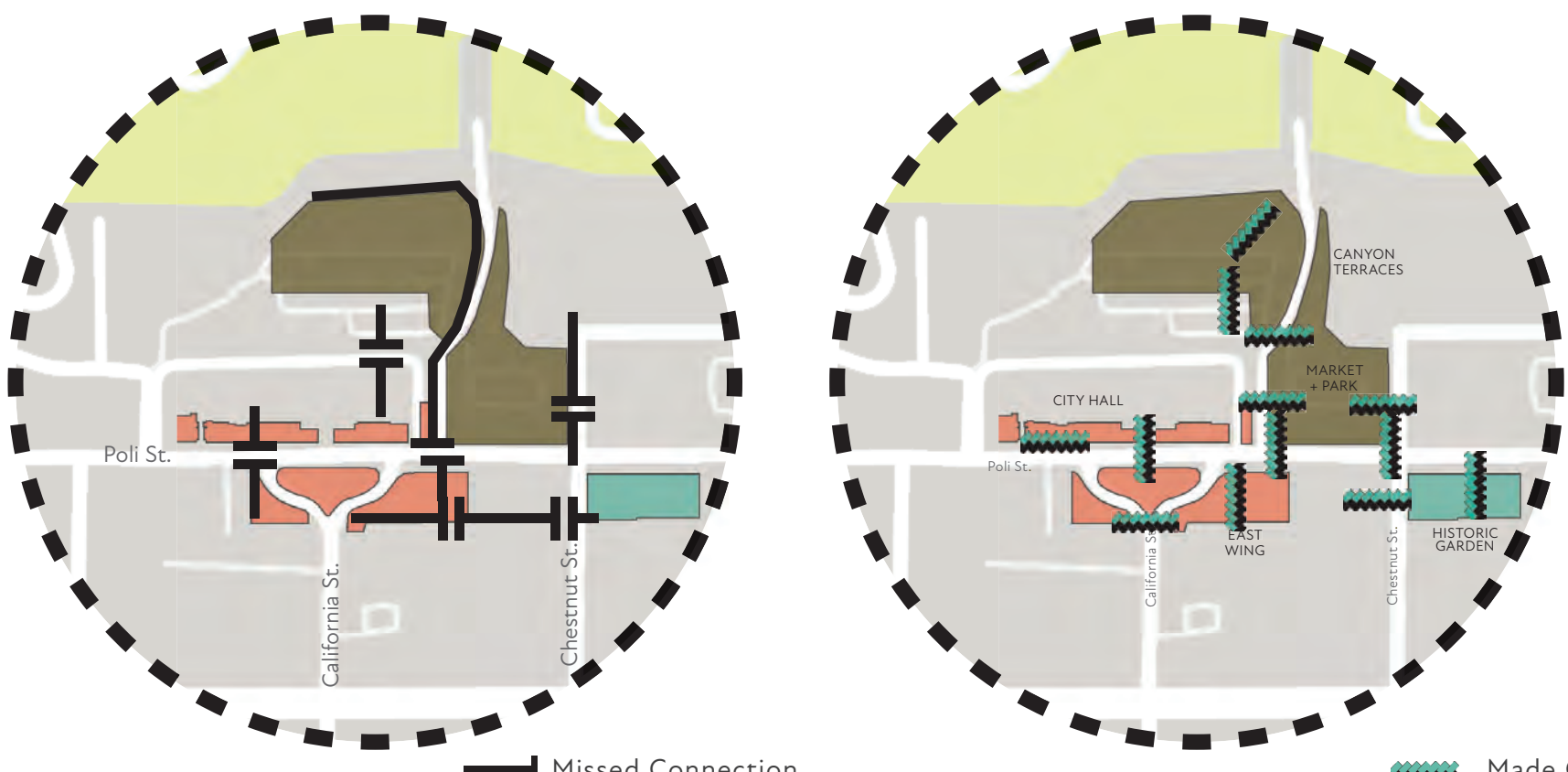


Former Grounds of Shepard Seed Co. Historic

- OPPORTUNITY**
- For studio structure on east side with greater security away from street
  - West side of lot has greatest visibility to promote local restaurant partnership
  - For runoff capture from well paved drive of Chestnut
  - Connection to City Hall parking lot from Chestnut St.

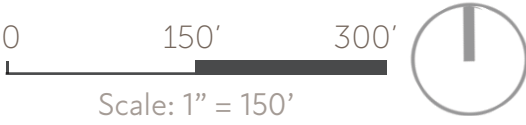


CONNECTIONS



Connecting Ventura to the ecological system surrounding starts with a united center. Opportunities for pedestrian and vehicular access to the public land surrounding City Hall including, the historic garden and the VBG have been shown.

Connections made throughout the design include a pedestrian bridge over Poli Street, vehicular access to the east parking lot via Chestnut Street and to the entrance of the Ventura Botanic Gardens up the canyons contours.





LEGEND

- 1. Hillside Demonstration Space
- 2. Woven Terracing
- 3. Bandshell
- 4. Permeable Paving
- 5. Curved Pergola for Market and Mixed Use
- 6. Botanical Gateway and Pedestrian Bridge
- 7. Welcoming Civic Spaces with Shade, Seating, Sculpture & Edible Landscape
- 8. Curb Cuts and Sunken Garden
- 9. Ventura Lookout
- 10. Chestnut Street Access
- 11. History Walk
- 12. Restaurant Garden
- 13. Community Venture Garden
- 14. Food Studio + Art Kitchen

HILLSIDE STABILIZATION

Sand based soils on steep hillsides frequently burned surrounding a city are a challenge. Grasses, with the exception of Vetiver (Chrysopogon zizaniodes) are more damaging than helpful and tree roots offer the most hold but are slow to establish so a diverse palette of mixed native plants ranging in root depth is the ideal approach.

IMPORTANT CONSIDERATIONS FOR THIS SITE:

- soil: sand based
- wildfire: likely
- salt spray: yes
- full sun: yes
- angle of slope: 30-60%
- proximity to downtown Ventura: close
- use of hillside roads: low

PLANTING: SHRUBS FOR STABILIZATION

Shallow + Fast Growing

Penstemon spp.



PHOTO CREDIT: LAS PALITAS

Deep Roots + Long Lasting

Eriogonum parvifolium



PHOTO CREDIT: CALSCAPE

Rhus ovata




PHOTO CREDIT: LAS PALITAS

Typically percent slope determines access and therefor maintenance, availability of water etc. also important to note is soil type and sun exposure. Shrubs should be chosen for the depth of their roots so as to occupy different depths of soil thus binding the soil together. Establishment period and appropriate mulch are two other critical factors when planning for sustainable erosion control through vegetation.

PLANTING: FIRE ADAPTED SHRUBS

Mimulus



Ceanothus



Cercis occidentalis


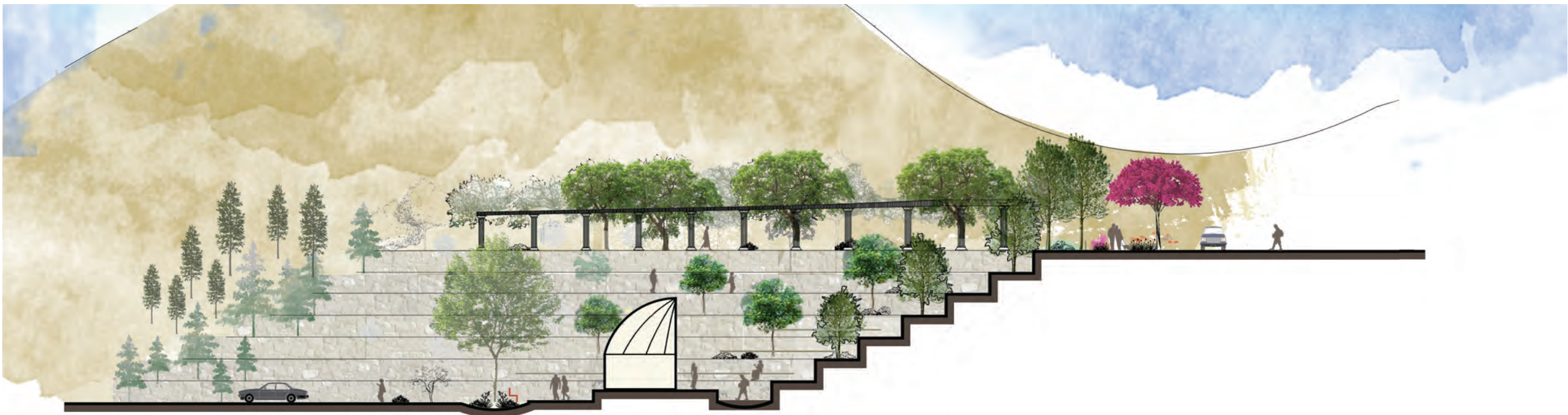


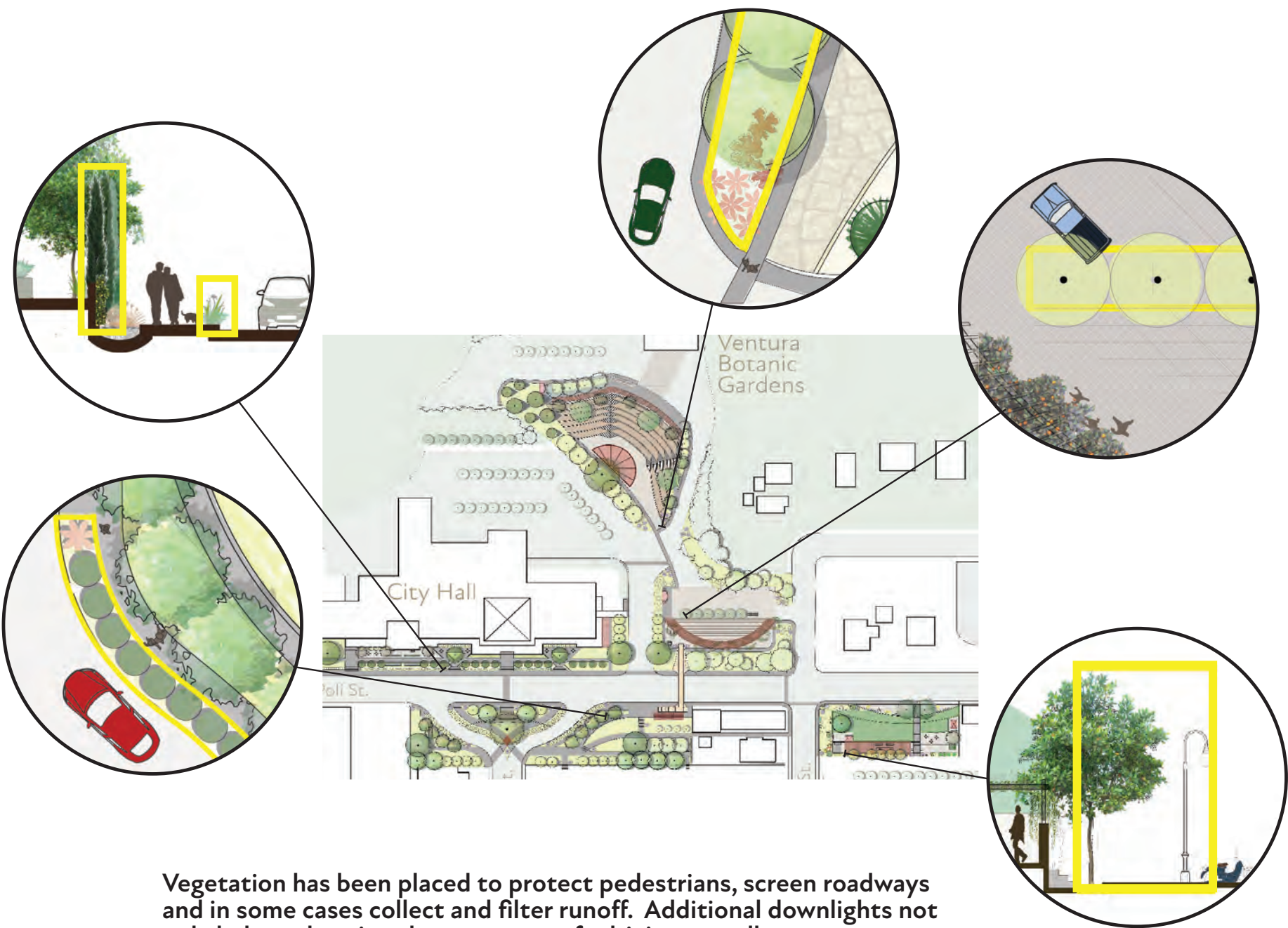
PHOTO CREDIT: READYFORWILDFIRE.ORG



PLANTING: VENTURA HISTORY

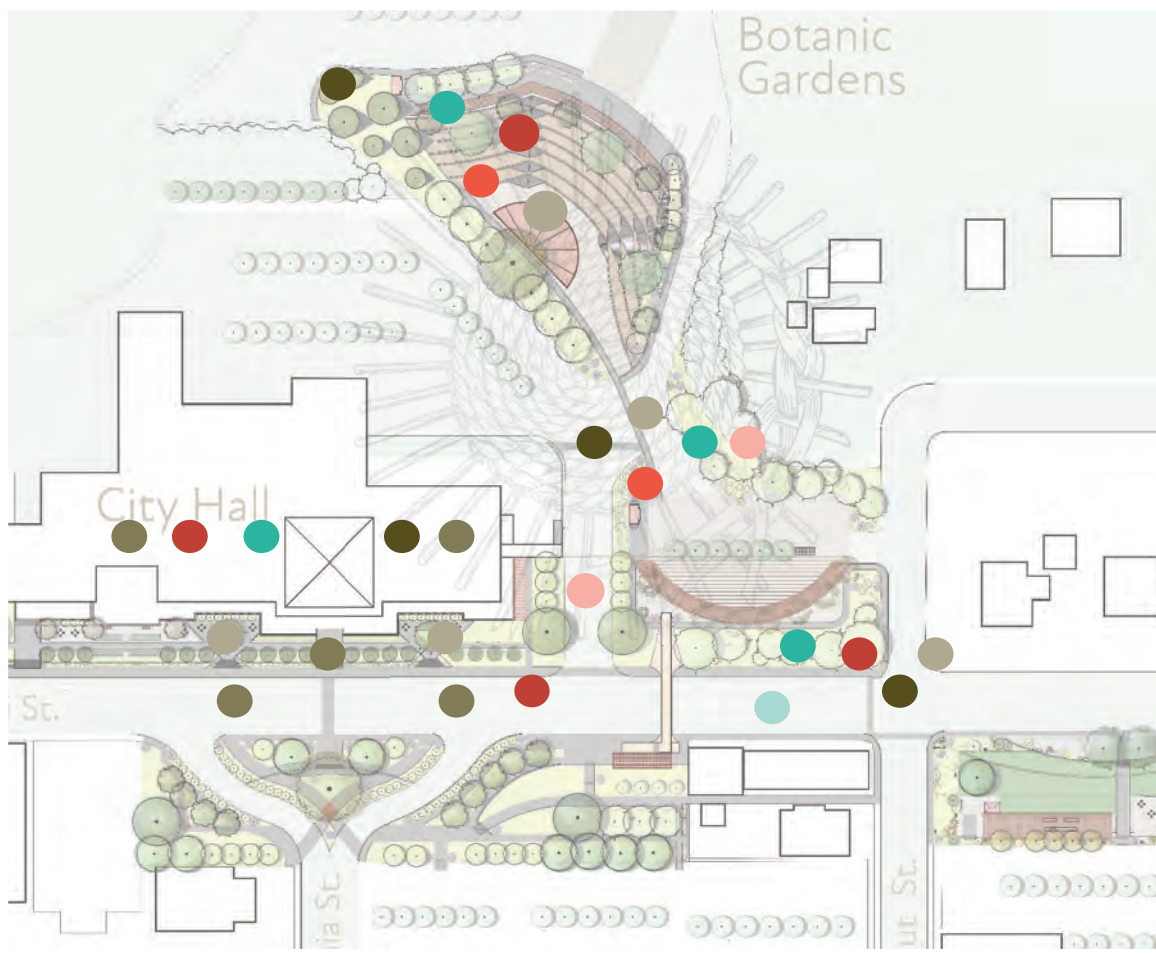
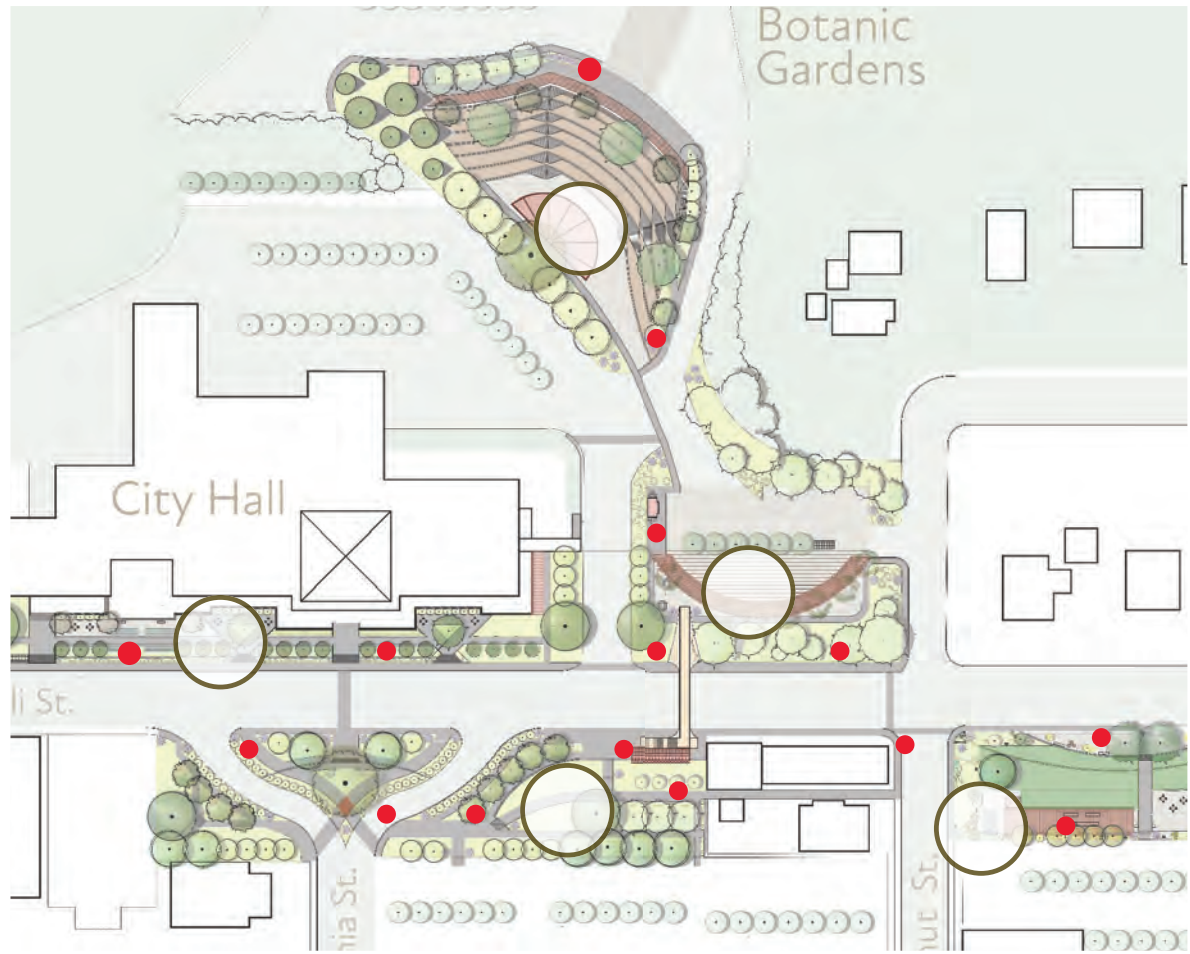
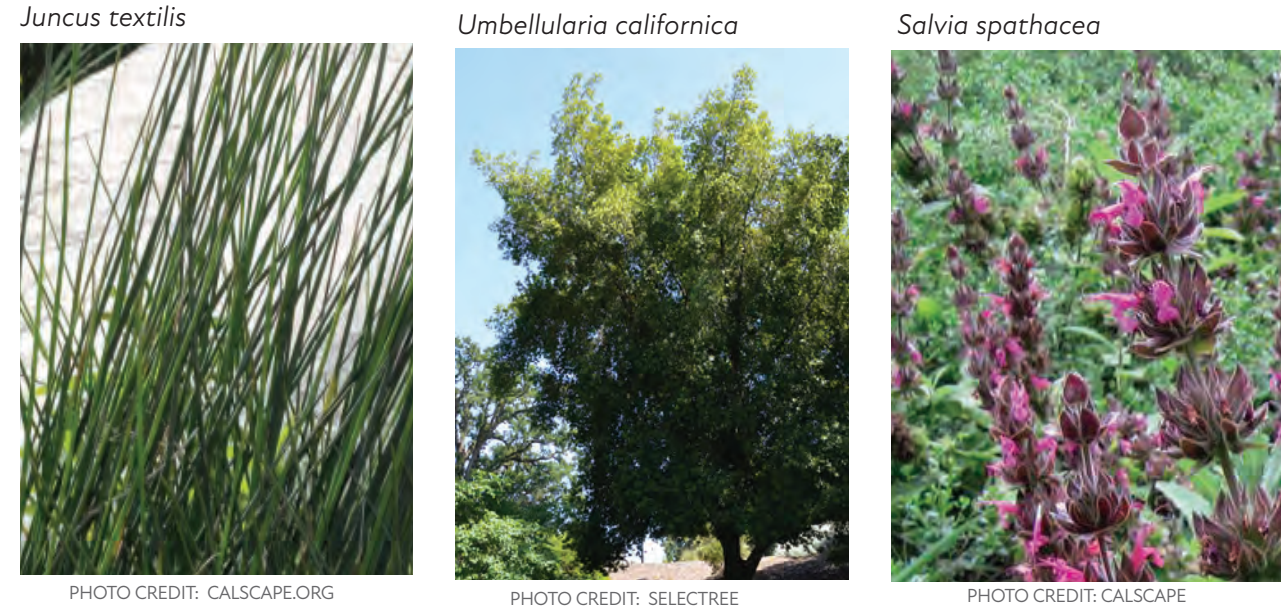


Hatch chilis to celebrate the Ortega family and Ipomoea tricolor 'Heavenly Blue' created by Theodosia Shepard herself are included in the plant palette as well as other species Mrs. Shepard enjoyed including heliotrope as it was said she had a 100' hedge of heliotrope bordering her house.



Vegetation has been placed to protect pedestrians, screen roadways and in some cases collect and filter runoff. Additional downlights not only help pedestrians but support safe driving as well.

PLANTING: NATIVE BASKETRY



0 100' 200'  
Scale: 1" = 100'

