

*Project #1:
Conceptual Residential Planting Design*

1834 16th Street, West Los Angeles

UCLAx

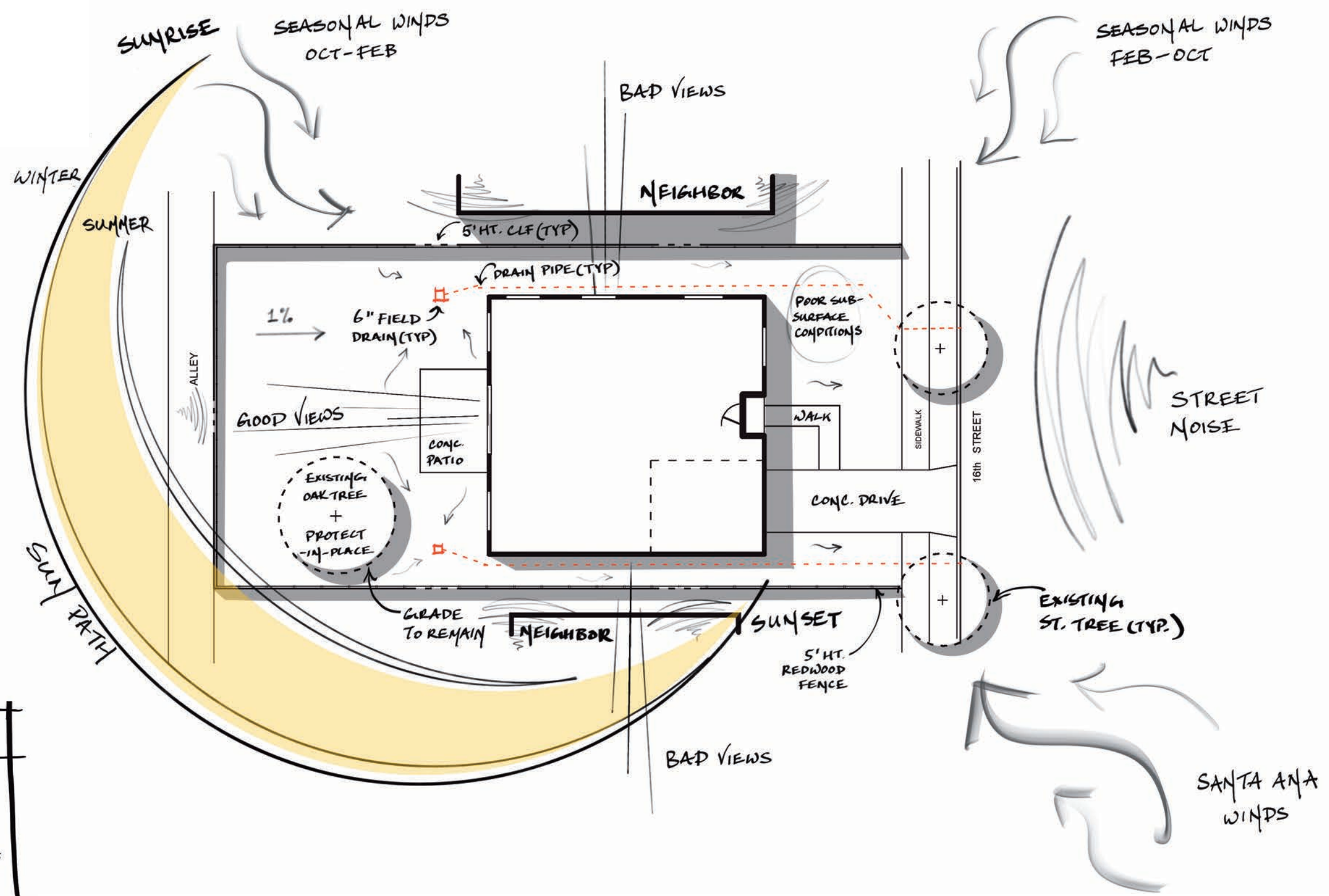
Landscape Design 5

Pamela Brief

Grace Pan



Site Appreciation



CLIMATE

- SUNSET ZONE: 24
- AVERAGE TEMPERATURES:
 - ~ WARM SEASON : JULY-OCT : >74°F
 - ~ COOL SEASON : DEC-APRIL : <64°F



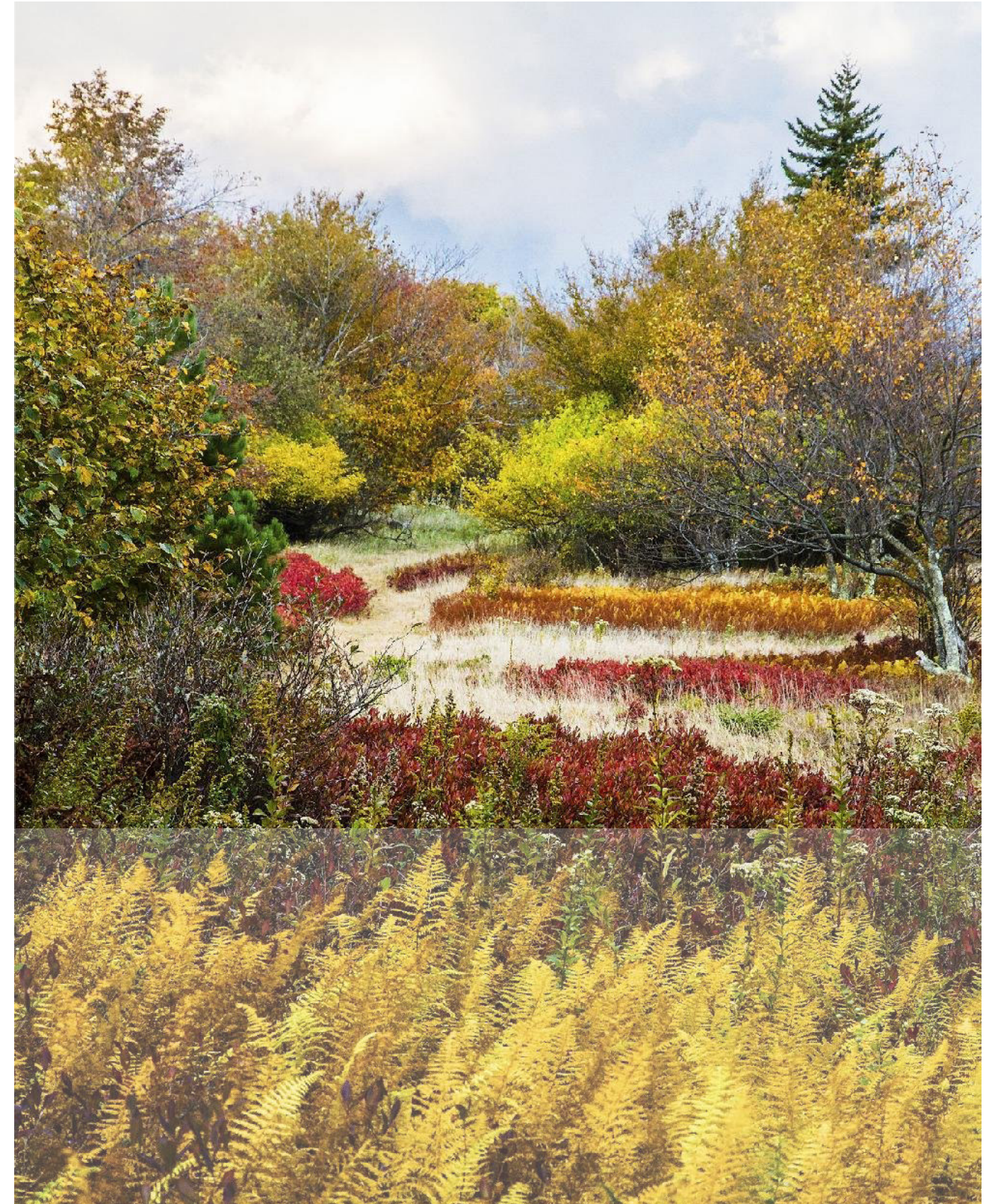
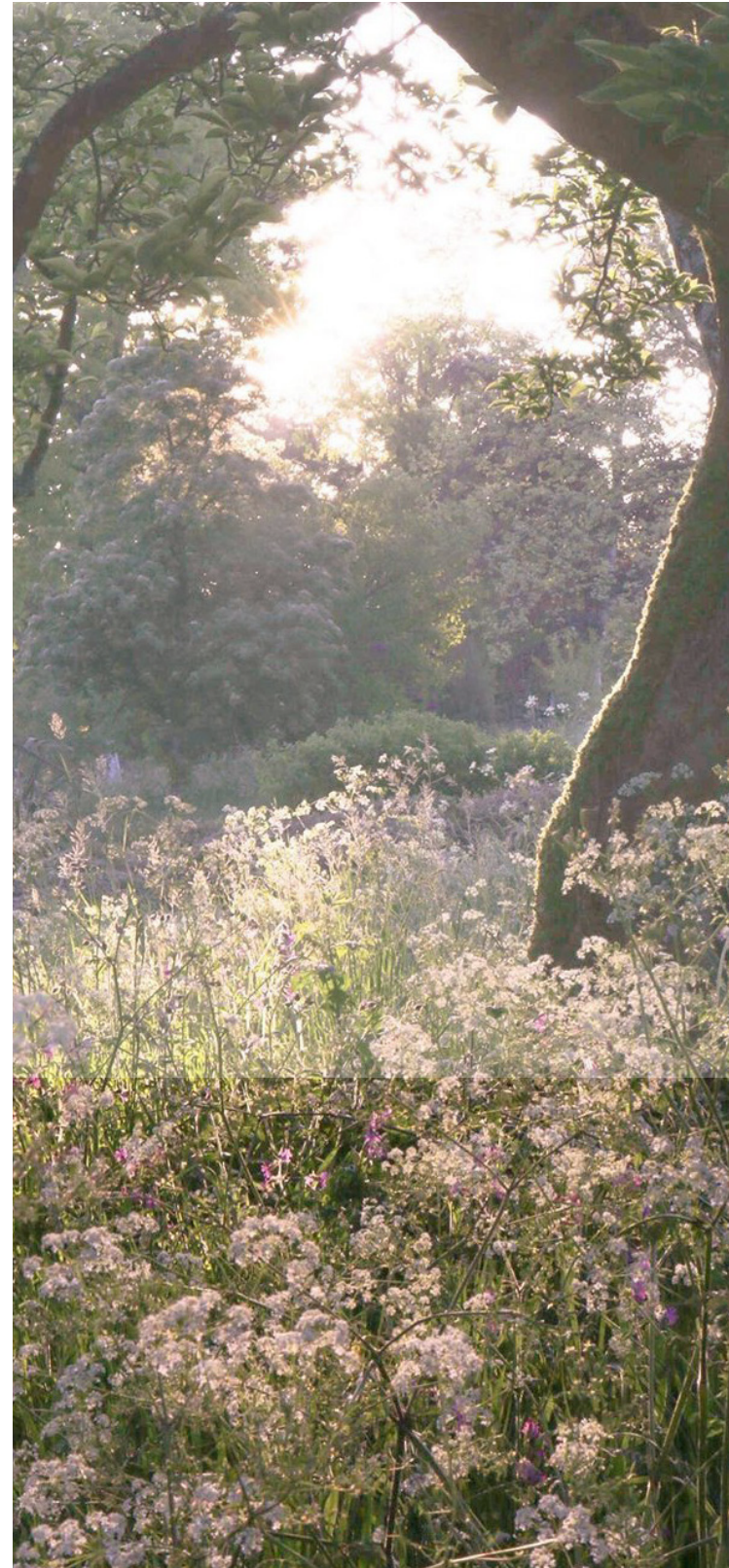
Inspiration

A bespoke garden, called Home

The majestic oak tree stands in command of the rear yard and anchors the space. It also serves as the core inspiration for the curvilinear lines found in the design, the **informal, flowing** nature of which engages the senses and encourages play and **exploration**.

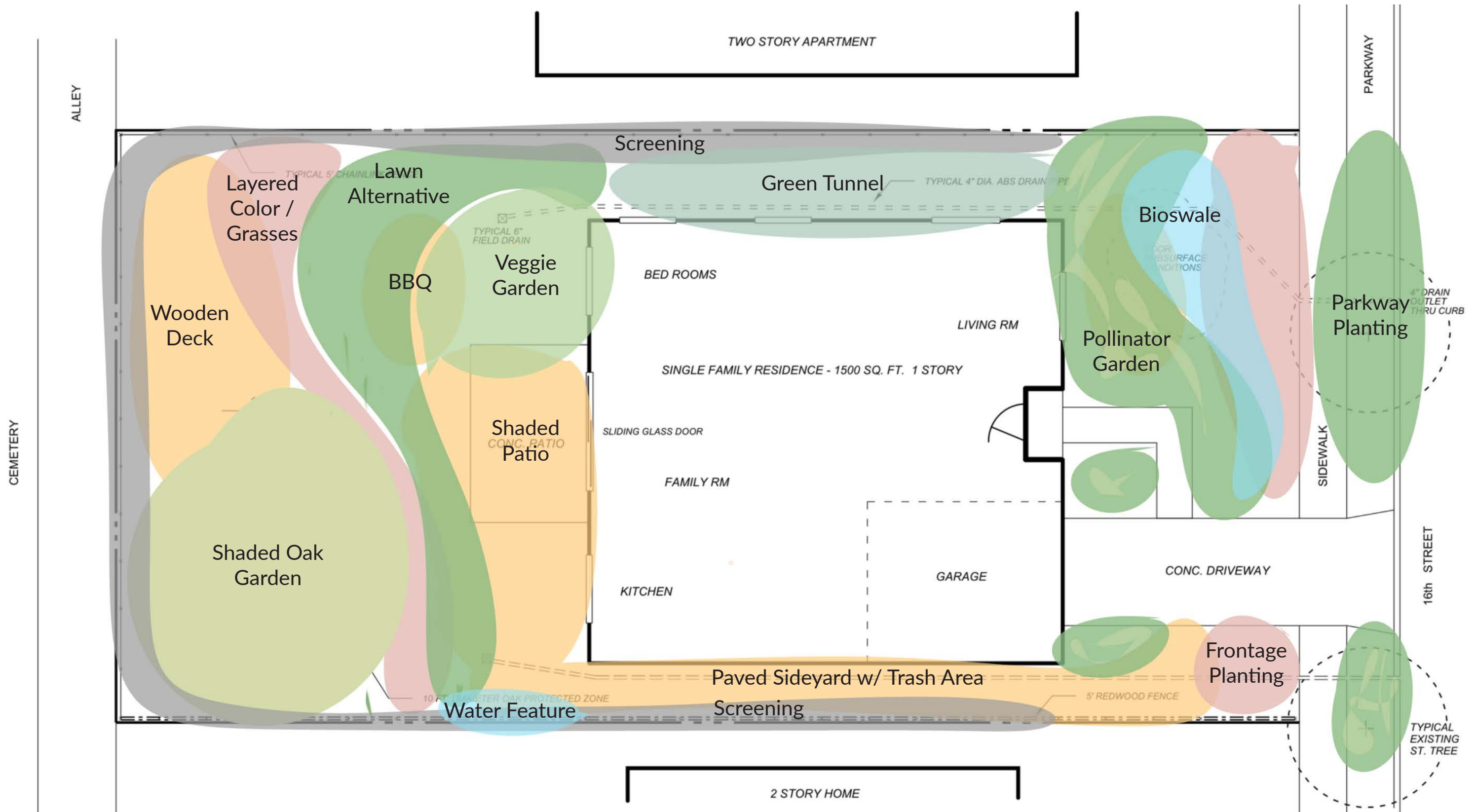
The planting design follows that theme, as the garden is populated with species that stimulate all **five senses**: vibrant color, seasonal interest, and textural contrasts are a feast for the eyes; birdsong and buzzing bees serve as members of nature's orchestra, captivating fragrances create lasting memories; and edibles sprinkled throughout satiate one's zest for life, filled with bountiful flavors and textures that fuel the **imagination**.

The planting also takes on the important role of framing **memory-making** spaces, such as the shaded deck and green tunnel that will spark joy and facilitate family time for years to come. Of course, the family isn't complete without the pup, so rest assured that the plants choices are tailored to the safety and the enjoyment of entire family.

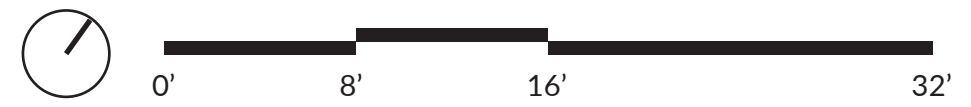
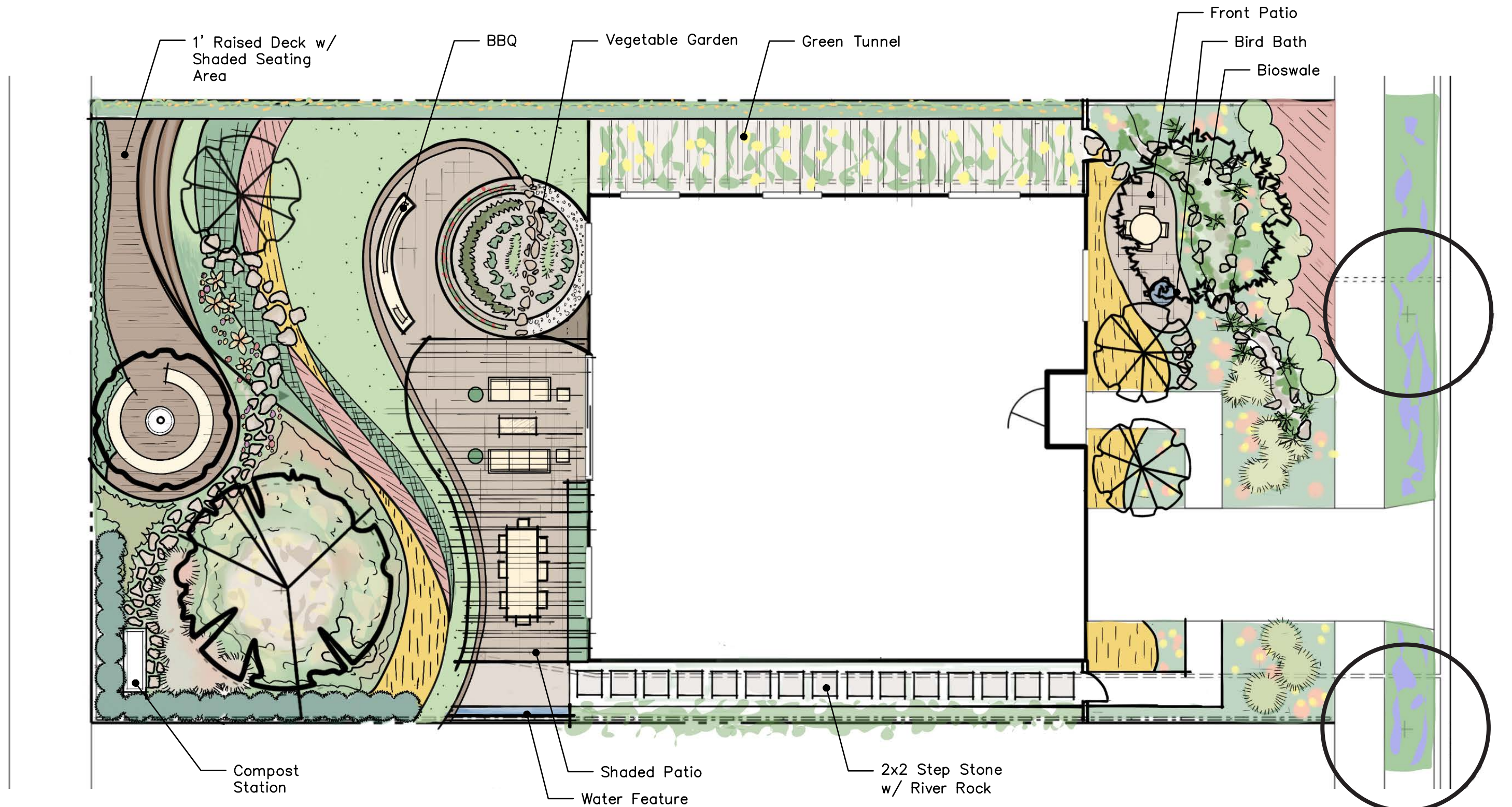


*Photo courtesy of *Planting in a Post-Wild World*

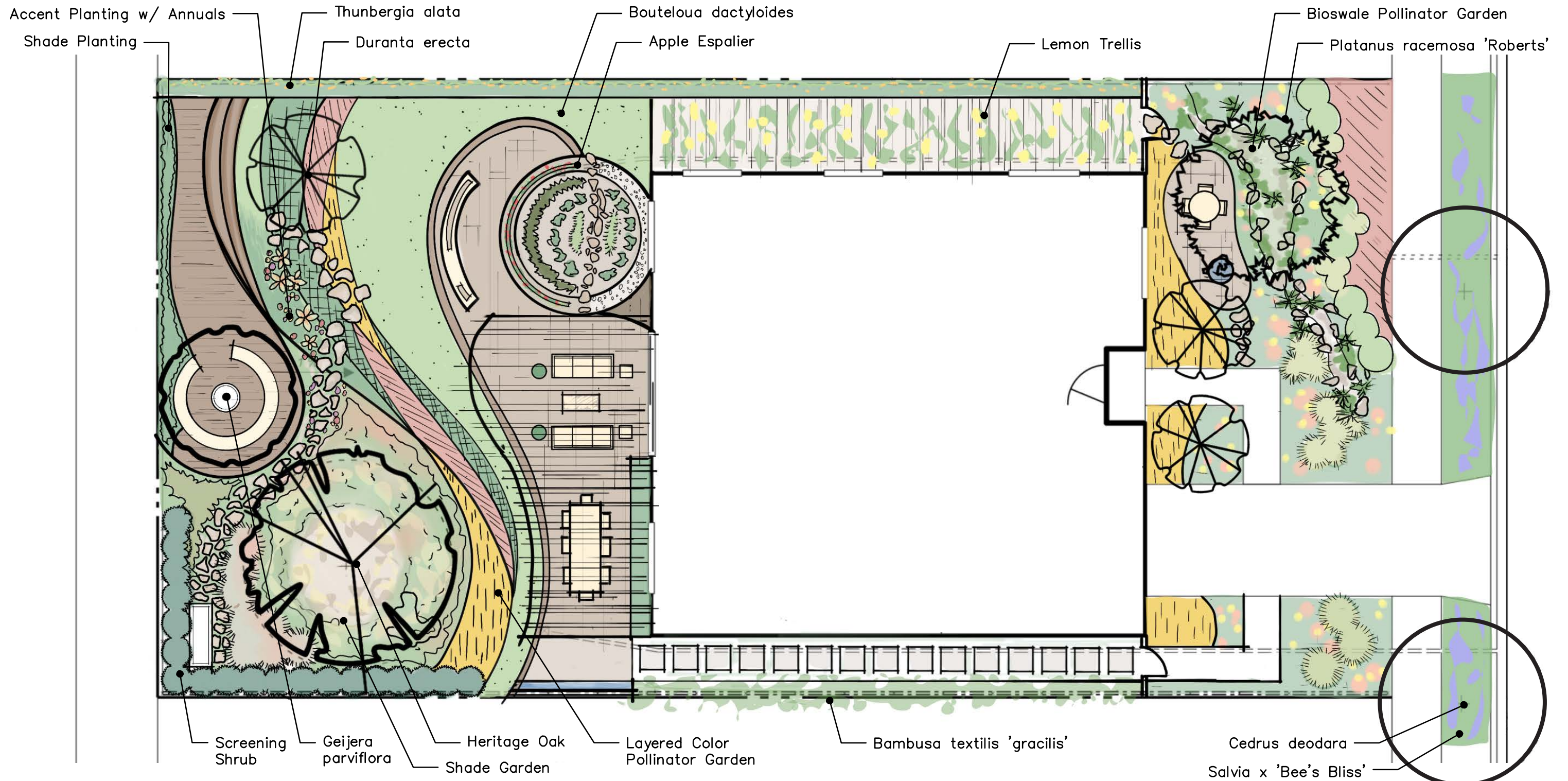
Brainstorming



Making Memories



Sustaining Life

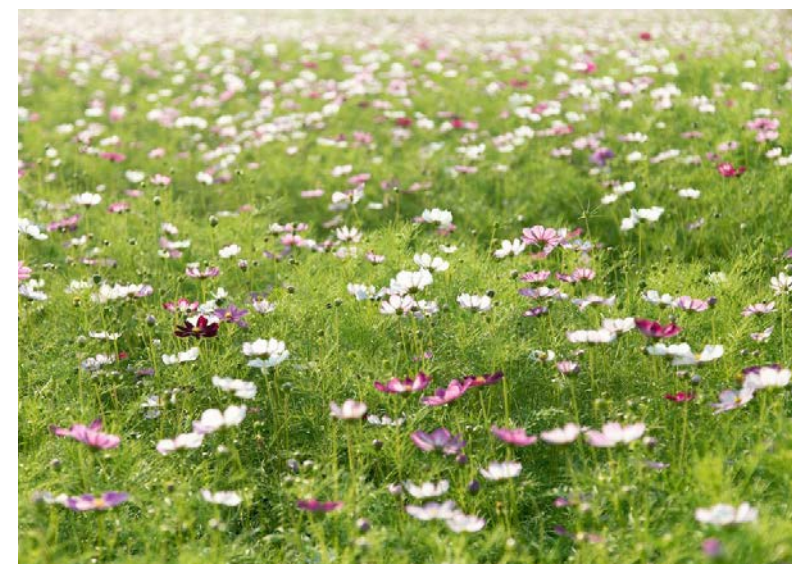
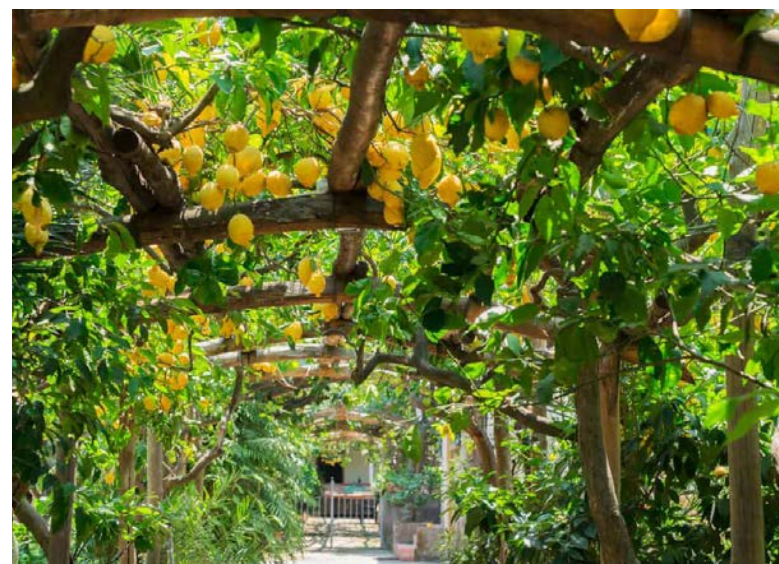


0' 8' 16' 32'

Sustaining Life

NO.	COMMON NAME	BOTANICAL NAME	HEIGHT X SPREAD	WUCOLS	BLOOM SEASON	BLOOM COLOR	PLACE OF ORIGIN	FRAGRANCE	NOTES
10 Trees									
1	Roberts' Western Sycamore	<i>Platanus racemosa 'Roberts'</i>	30'-80' Ht. x 20'-50' Spr.	M	-	-	California	No	-
2	Australian Willow	<i>Geijera parvilora</i>	30'-35' Ht. x 20' Spr.	L	Spring	Cream	Australia	No	-
3	Golden Dewdrop	<i>Duranta erecta</i>	10'-20' Ht. x 6'-10' Spr.	M	Spring - Frost	Violet/White	Brazil	Yes	-
Screening Shrub									
4	Skyrocket Juniper	<i>Juniperus scopulorum 'Skyrocket'</i>	2'-3' Ht. x 15'-20' Spr.	VL	-	-	North America	No	-
Vines / Espalier									
5	Black-Eyed Susan Vine	<i>Thunbergia alata</i>	3'-8' Ht. x 3'-6' Spr.	M	Spring - Frost	Yellow/Orange	East Africa	No	-
6	Meyer Lemon (Trellis)	<i>Citrus x meyeri</i>	6'-10' Ht. x 4'-8' Spr.	M	Fall - Early Spring	White	China	Yes	-
7	Anna Apple (Espalier)	<i>Malus domestica 'Anna'</i>	10'-20' Ht. x 10'-20' Spr.	M	Spring - Summer	Pink/White	Israel	Yes	-
Layered Color Pollinator Garden									
8	Filler Grass & Wildflower Blend	<i>Varied</i>	Varied	L	Varied	Varied	Varied	-	-
9	Blue Gramma	<i>Bouteloua gracilis 'Blonde Ambition'</i>	1'-2' Ht. x 1'-2' Spr.	L	-	-	California	No	-
10	Damianita Daisy	<i>Chrysactinia mexicana</i>	1'-2' Ht. x 1'-2' Spr.	VL	Early Summer - Fall	Yellow	California	Yes	-
11	Jerusalem Sage	<i>Phlomis fruticosa</i>	2'-4' Ht. x 3'-5' Spr.	L	Summer	Yellow	California	Yes	-
12	California Goldenrod	<i>Solidago velutina ssp. californica</i>	2'-3' Ht. x 2'-3' Spr.	L	Fall	Yellow	California	Yes	-
13	Pink Muhly	<i>Muhlenbergia capillaris</i>	2'-3' Ht. x 2'-3' Spr.	L	Fall	Pink	North America	No	-
14	Red-Flowered Buckwheat	<i>Eriogonum grande var. rubescens</i>	1' Ht. x 3' Spr.	VL	Summer	Pink/Red	California	No	-
15	Palmer's Penstemon	<i>Penstemon palmerii</i>	4'-5' Ht. x 2' Spr.	L	Summer	Pink/White	California	Yes	-
16	California Milkweed	<i>Asclepias californica</i>	2'-3' Ht. x 2'-3' Spr.	VL	Summer - Fall	Pink/White	California	Yes	Plant away from the pup!
Lawn Alternative									
17	'UC Verdes' Buffalo Grass	<i>Bouteloua dactyloides 'UC Verdes'</i>	4"-6" Ht. x Spreading	L	-	-	California	No	Can overseed wildflowers for summer blooms.
Bioswale									
18	Purple Threeawn	<i>Aristida purpurea</i>	18"-24" Ht. x 24" Spr.	VL	-	-	California	No	-
19	Pine Muhly	<i>Muhlenbergia dubia</i>	3' Ht. x 3' Spr.	L	-	-	California	No	-
20	Yarrow	<i>Achillea ssp.</i>	6"-24" Ht. x 2'-3' Spr.	L	Spring - Fall	White/Pink/Yellow	California	Yes	Plant away from the pup!
Shade Garden									
21	Coastal Wood Fern	<i>Dryopteris arguta</i>	2'-3' Ht. x 2'-3' Spr.	L	-	-	California	No	-
22	Coral Bells	<i>Heuchera ssp.</i>	1' Ht. x 1'-2' Spr.	M	Varied	Varied	California	Yes	-
23	Hummingbird Sage	<i>Salvia spathacea</i>	2'-3' Ht. x 2'-3' Spr.	L	Spring/Summer	Magenta	California	Yes	-
Parkway									
24	Bee's Bliss Purple Sage	<i>Salvia leucophylla 'Bee's Bliss'</i>	1'-2' Ht. x 2'-5' Spr.	L	Spring/Summer	Lavender/Pink	California	Yes	-

Plant Snapshots



Plant Snapshots



Prepared for:

1834 16th Street, West Los Angeles

