

# MARCH FIELD

LD7 SPRING

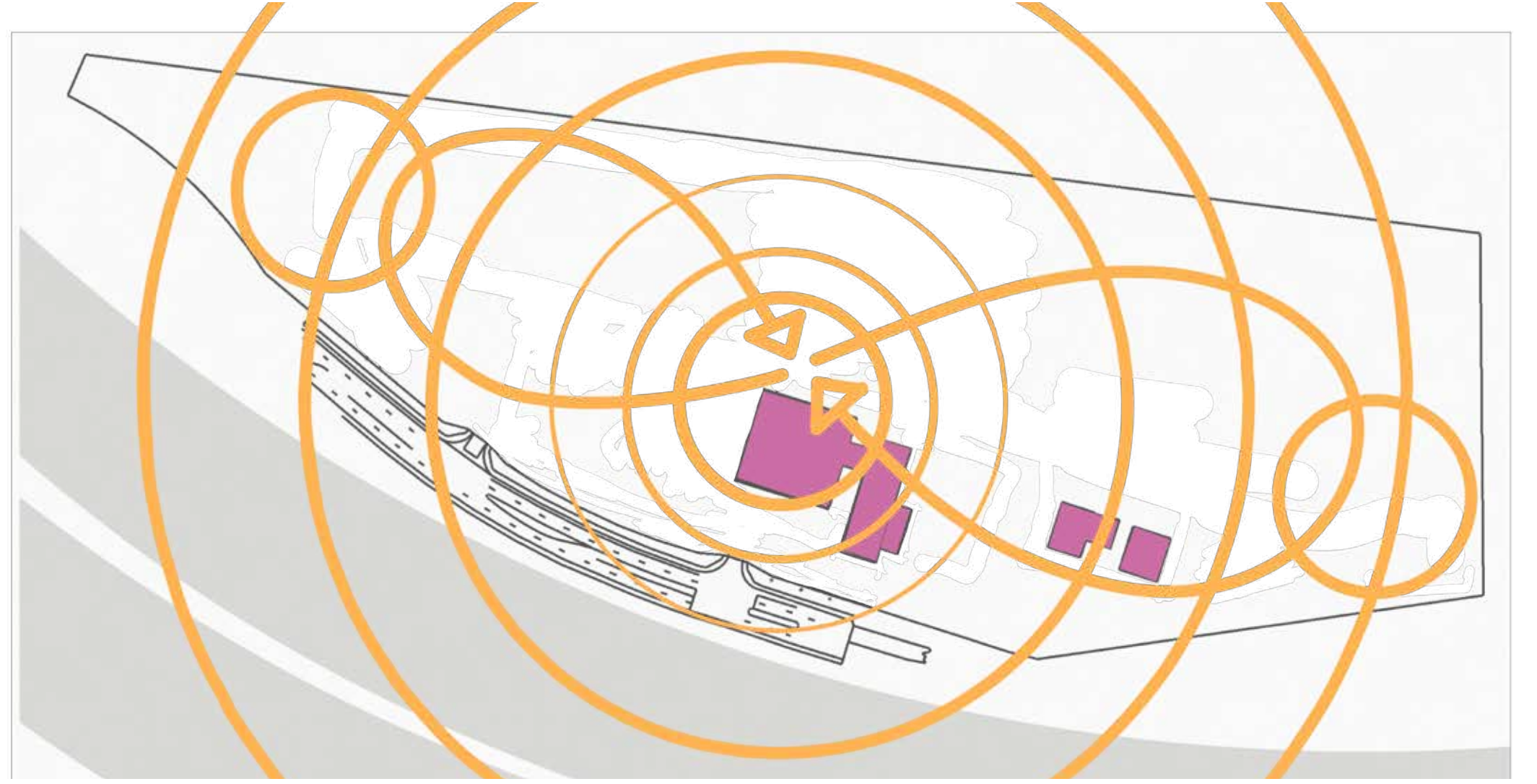
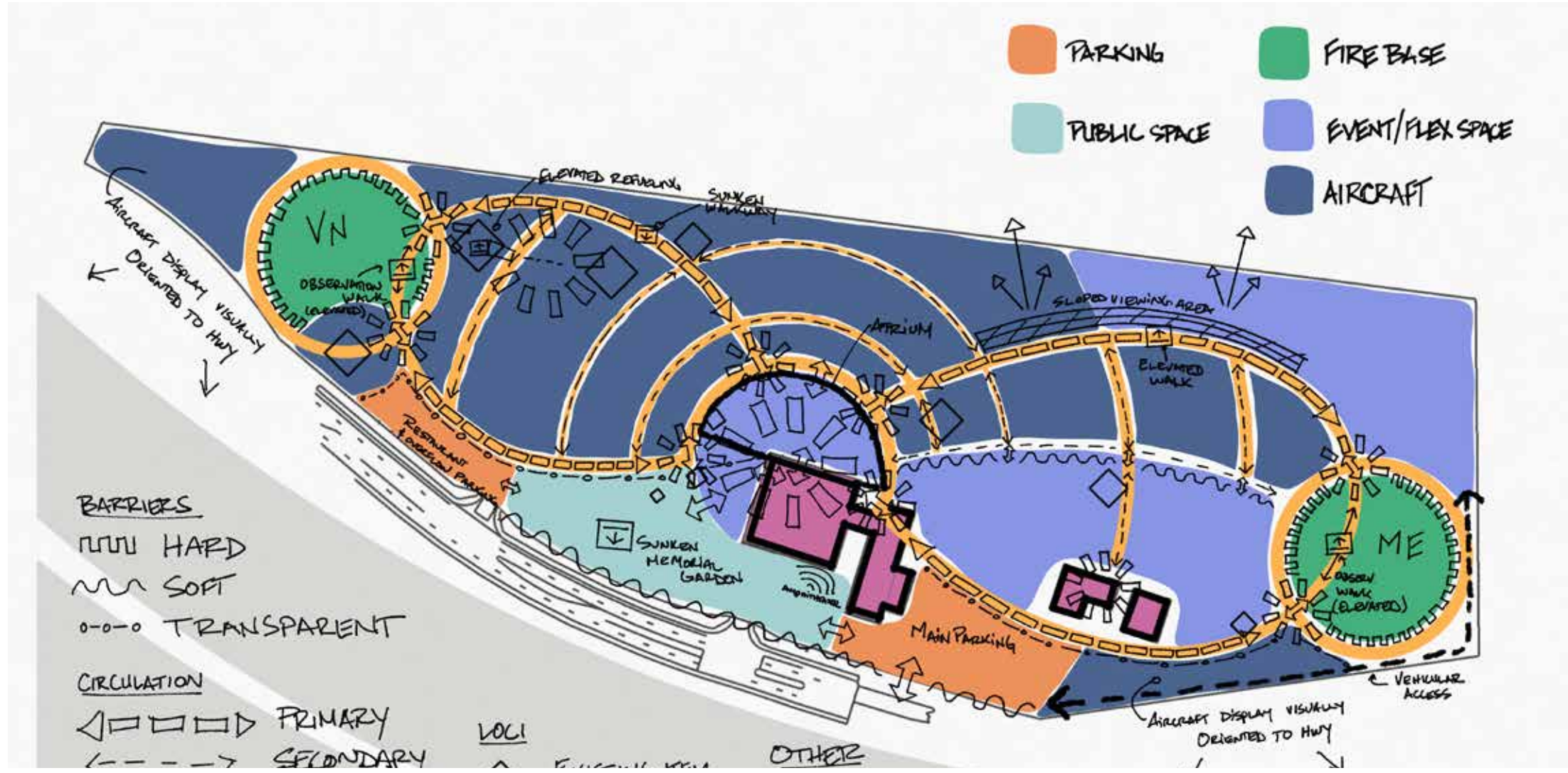
# AIR MUSEUM -

2020

ROBERTO

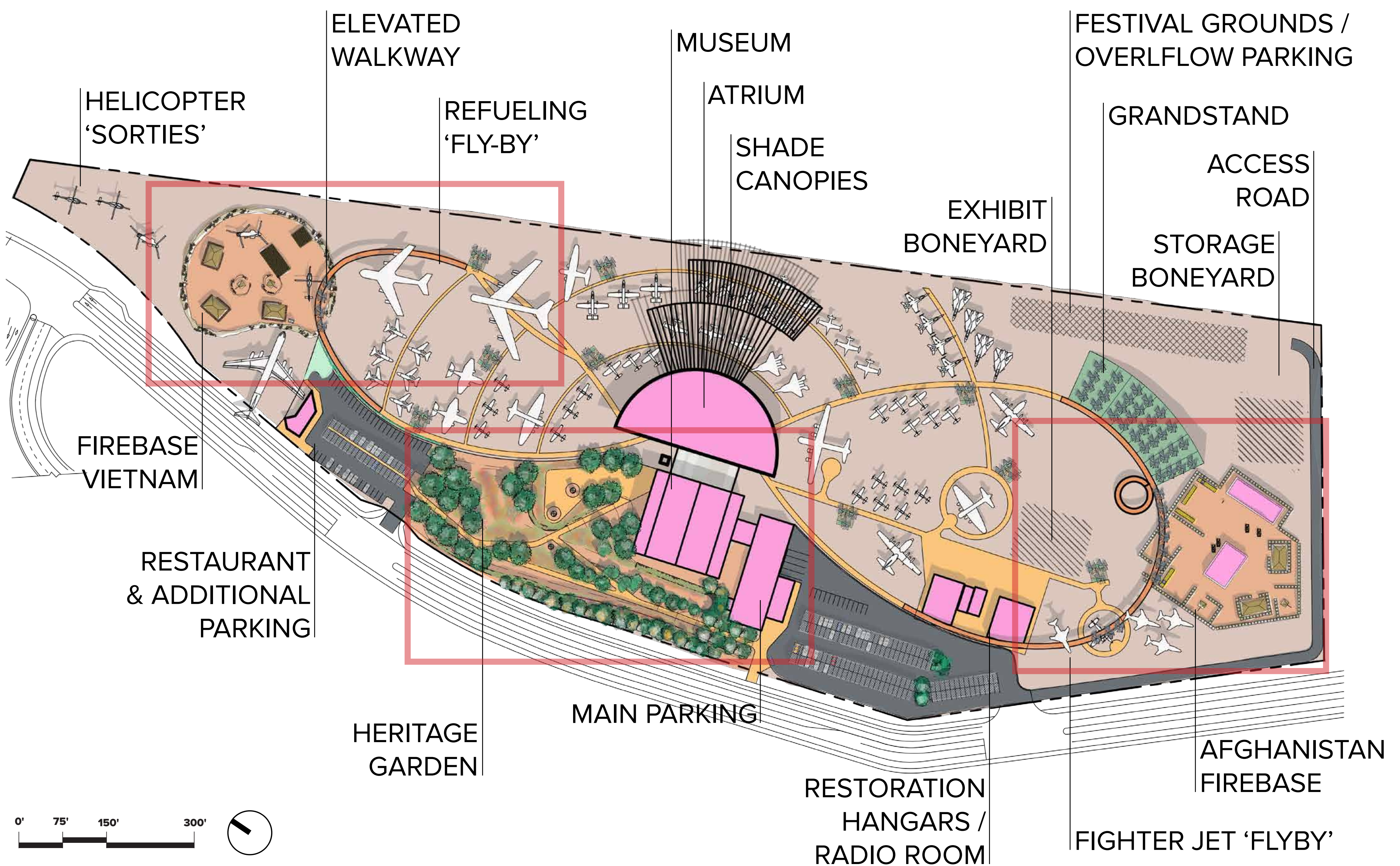
RIVERSIDE CA

ACHACOSO



One of the most striking and unique elements of the current March Field Air Museum are its military firebase re-creations. In the real-world, these forward-operating-bases, sited deep within enemy territory, are challenging places: challenging to get to, challenging to live in, challenging to leave. Getting to them, living in them and returning from them involves **physically and emotionally arduous and transformative journeys**.

This project takes the idea of this 'journey' as its central theme, with the goal of taking museum-goers on a series of 'journeys' to hopefully **provide visitors even just a slight semblance of the journeys that these soldiers had to undertake**.





# HERITAGE GARDEN



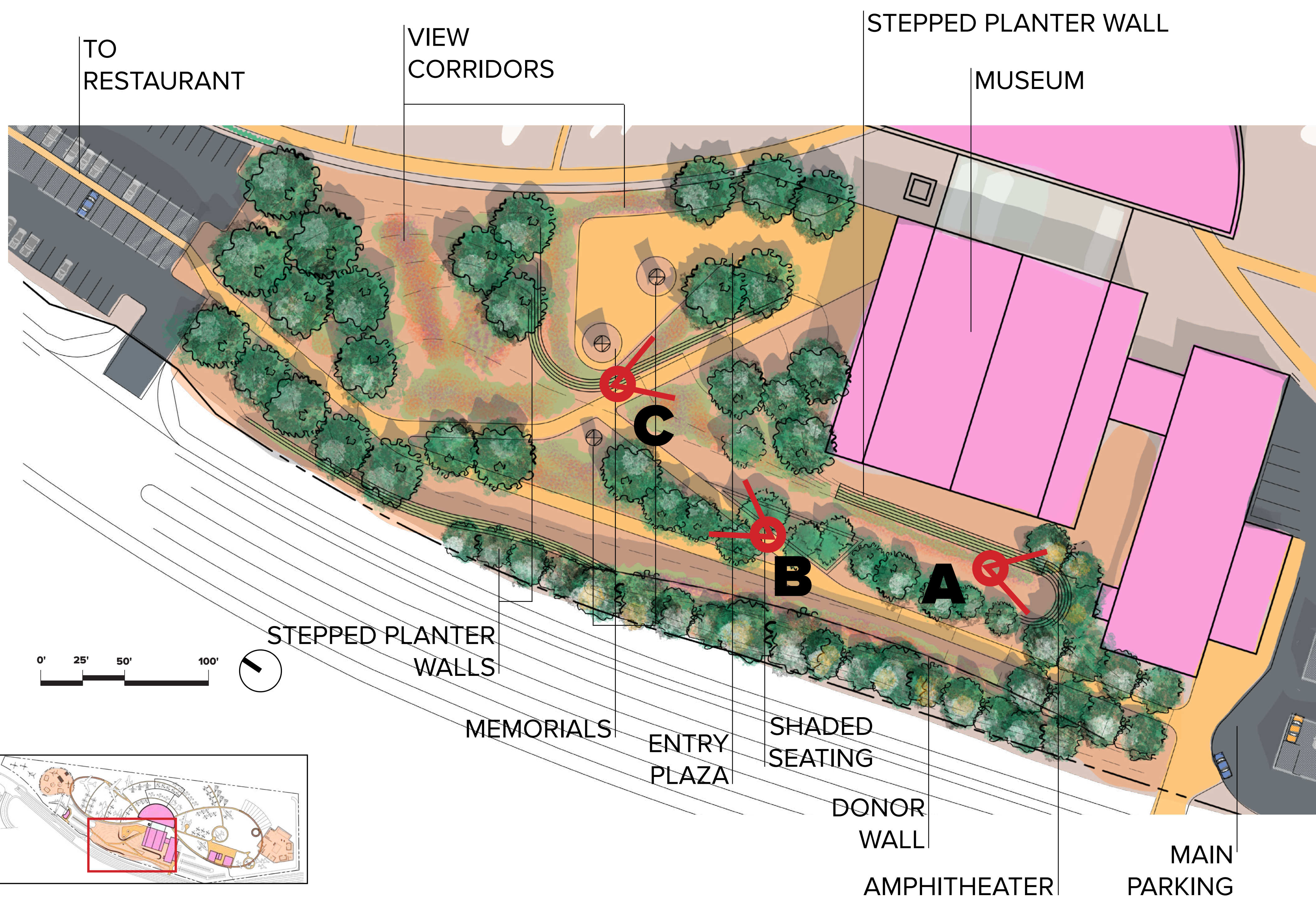
AMPHITHEATER



MEMORIAL APPROACH  
& VIEW CORRIDOR



MUSEUM APPROACH





# VIETNAM FIREBASE & RE-FUELING 'FLY-BY'

BIRD'S-EYE VIEW



**A**

REFUELING FLYBY

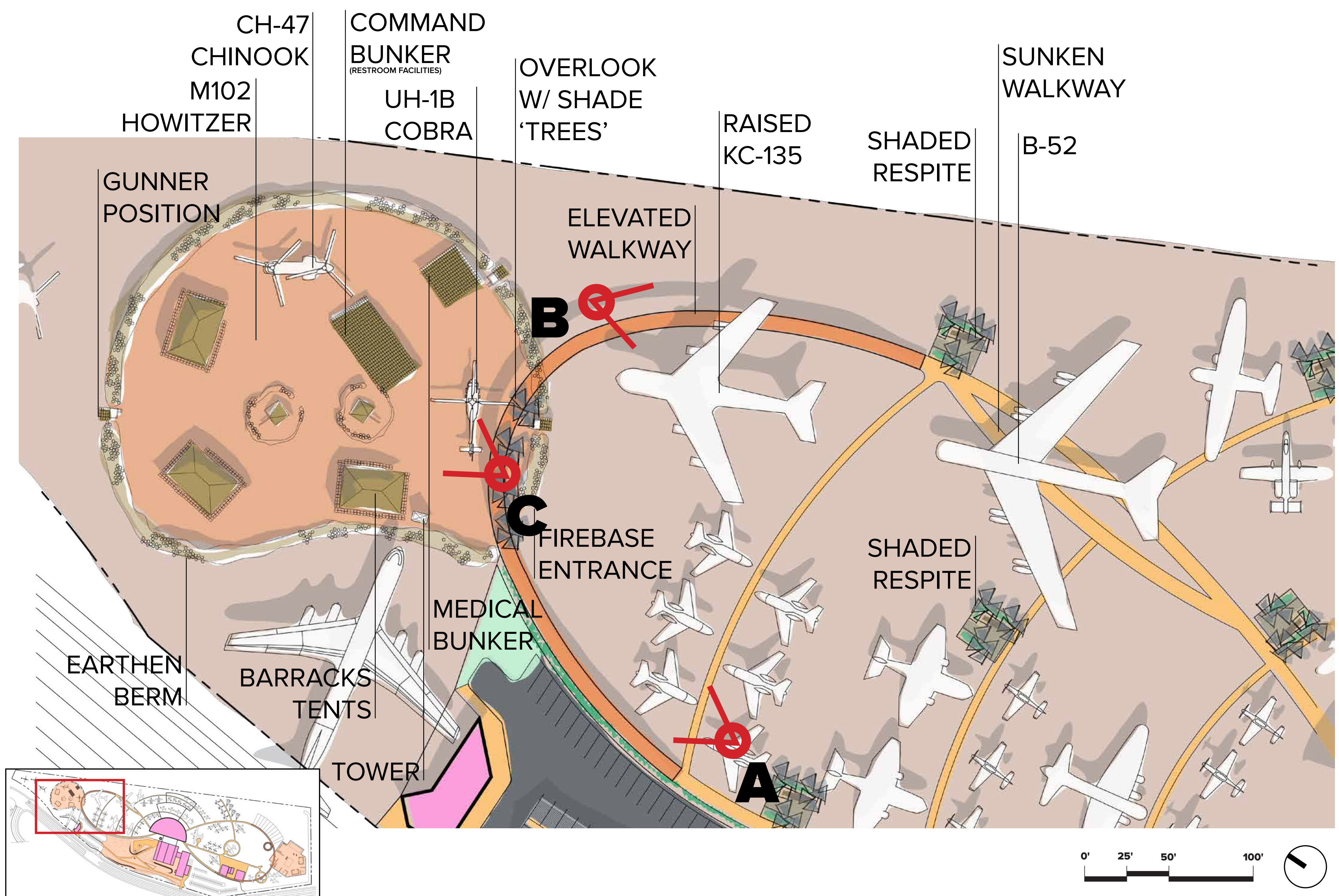


**B**

FIREBASE OVERLOOK

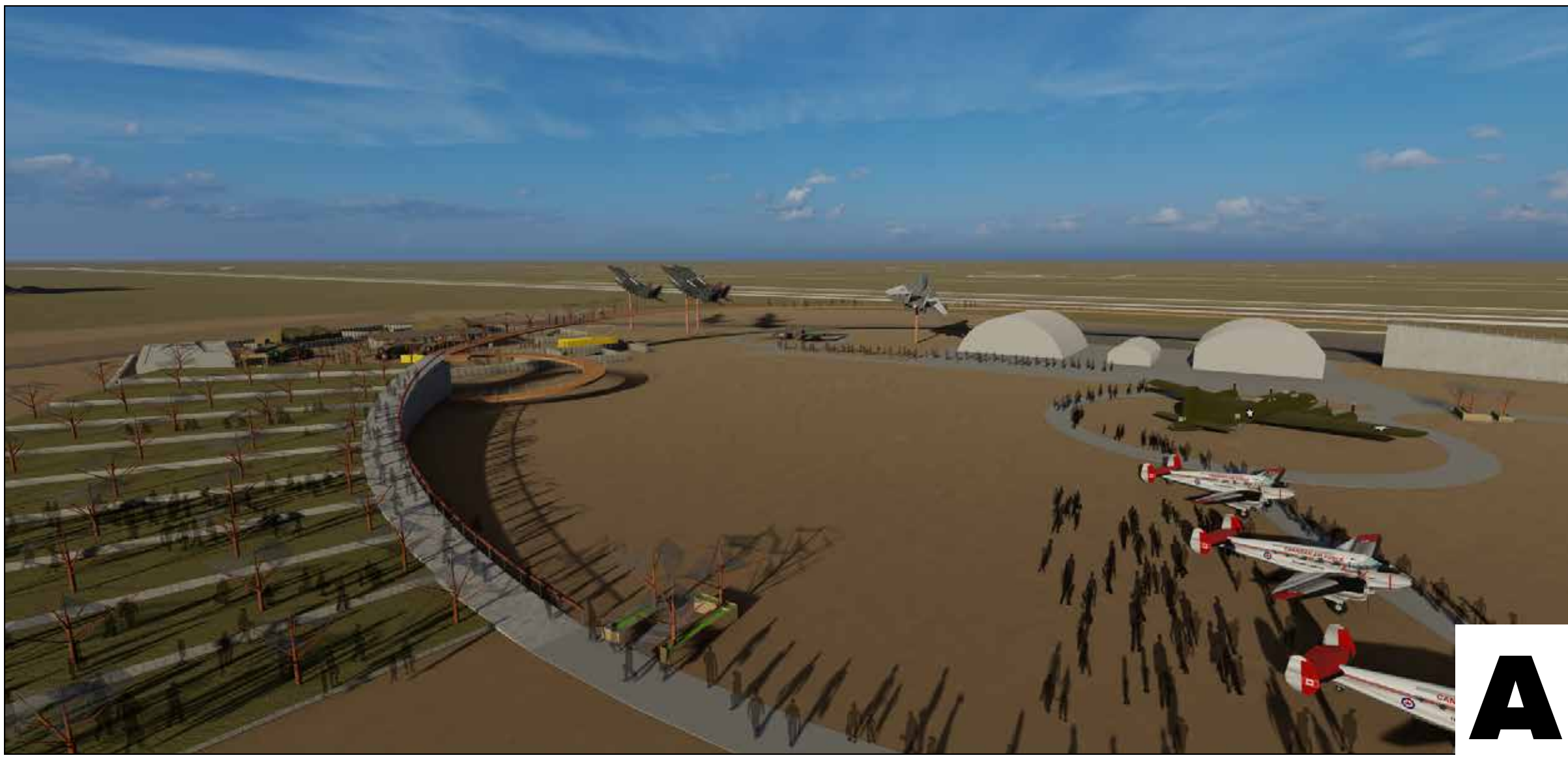


**C**





# AFGHANISTAN FIREBASE & GRANDSTAND



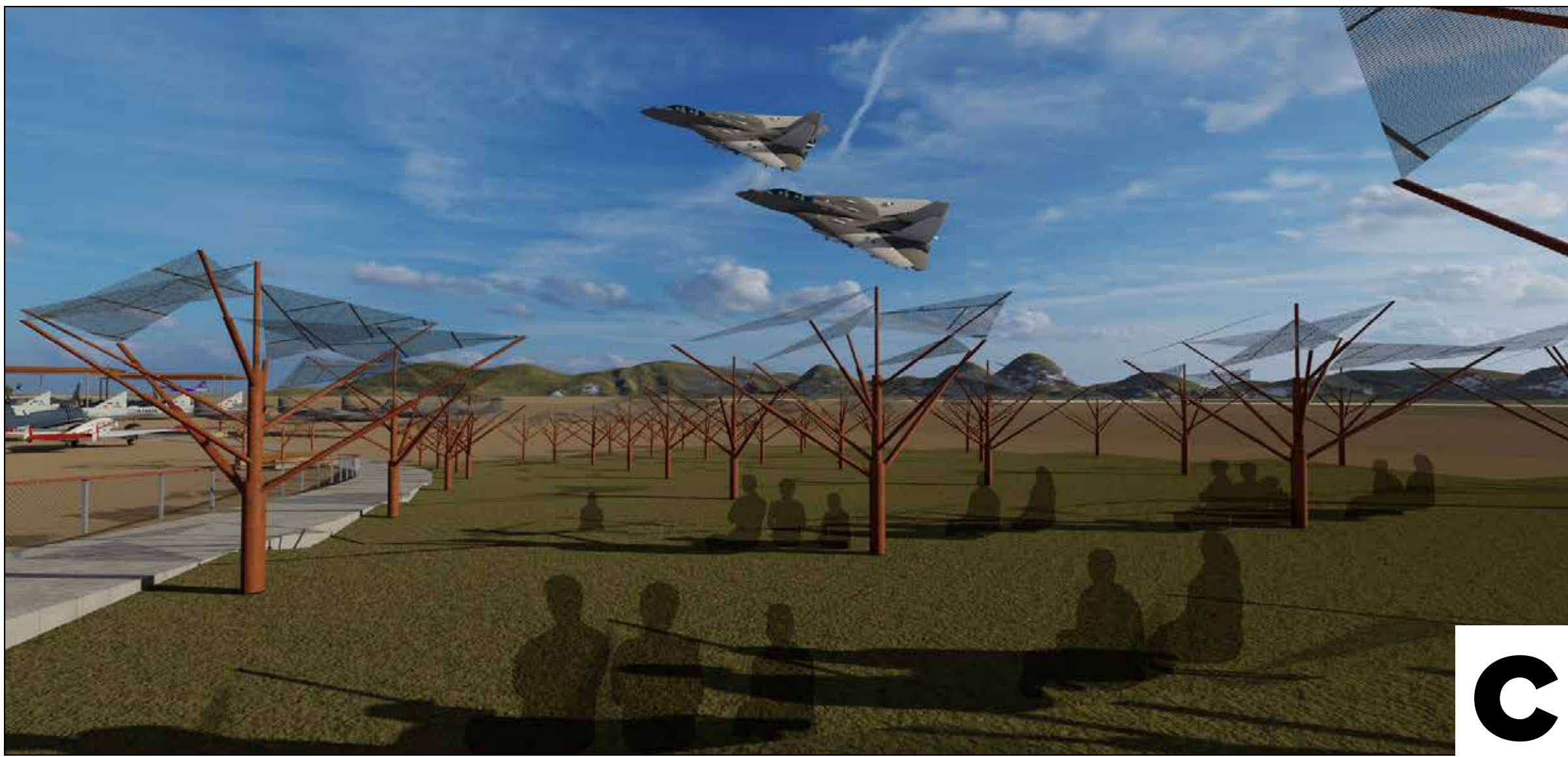
**A**

BIRD'S-EYE VIEW



**B**

AFGHANISTAN FIREBASE SHADE PAVILLION



**C**

GRANDSTAND

**A** VIEWING GRANDSTAND  
**B** CONEX CONTAINER W/ LOOKOUT TOWER  
**C** AFGHANISTAN FIREBASE STORAGE BONEYARD

