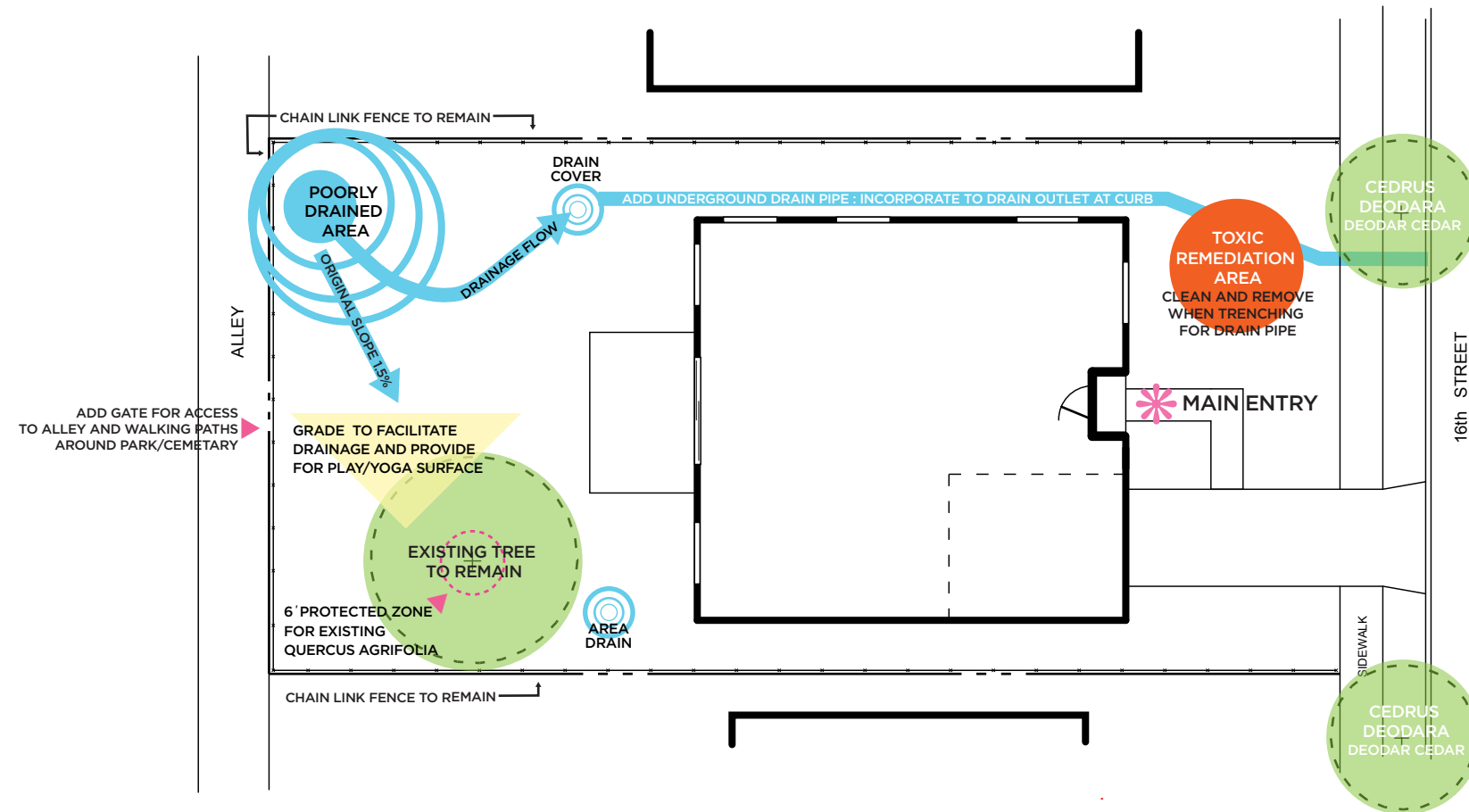




Residential Planting Design

Terri Larronde	LD 5 Planting Design	UCLA Extension Landscape Architecture	Spring 2020
Project 2	1834 16th Street, Santa Monica		April 29, 2020

Residential Site Analysis



Analysis

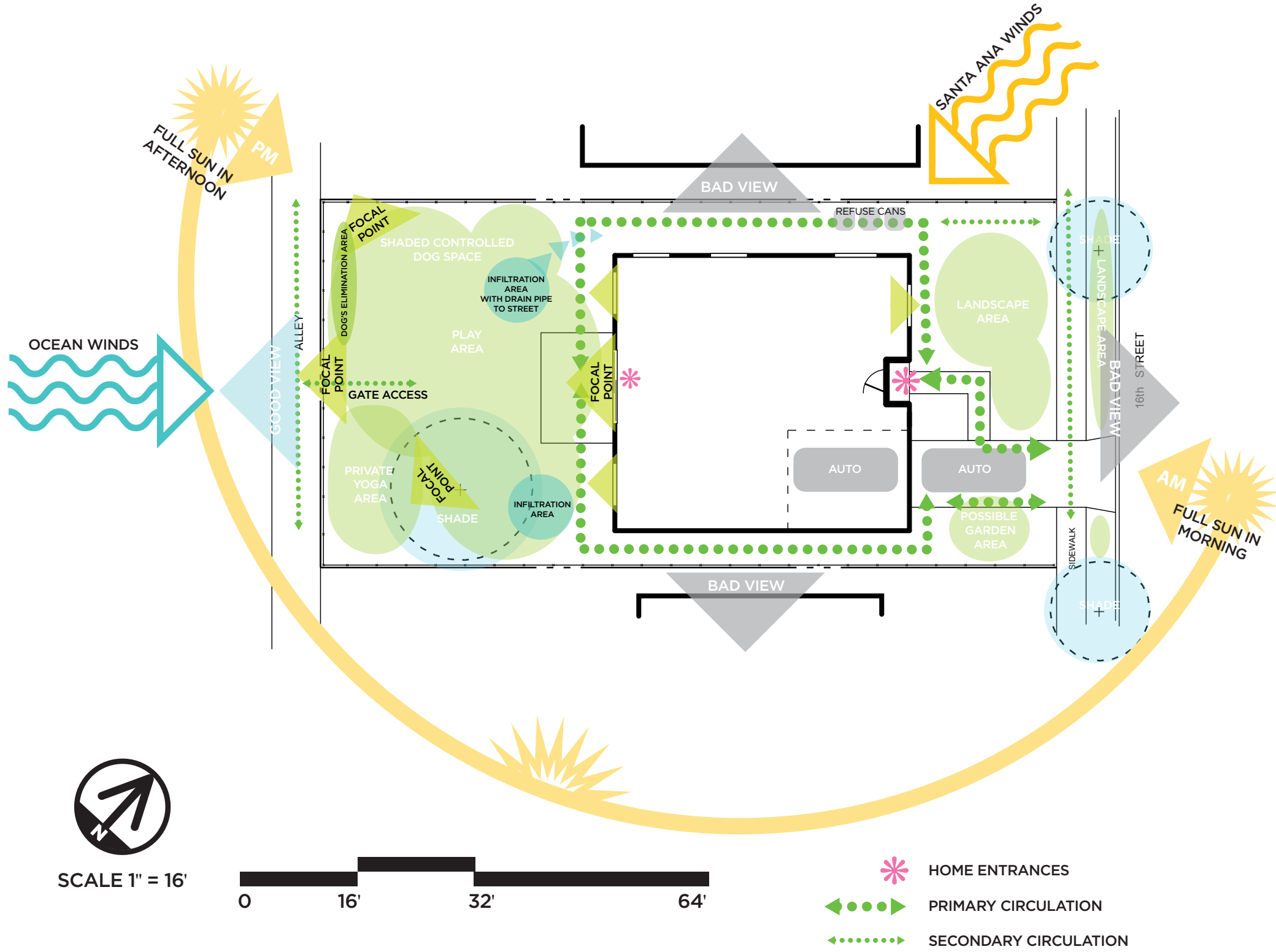
- Sunset Zone 24 in Santa Monica, CA
- Property backs on SW corner to Woodlawn Cemetary (Good, parkland view)
- Side and Front views not especially pleasing; apartments (NE and NW) and 2 story home (SE)
- Soil: Sandy loam
- 1.5% average slope drainage west to east
- Property lot size: Approx 50' x 100'
- Plantings: Drought resistant when possible, fast growing vines to cover chainlink fence
- Users: Family with small child and pets. Need for meditative garden, yoga area, dog containment area, permeable surface. Pet tolerant turf or groundcover.



SCALE 1" = 16'



Area Use Plan



Design Narrative

1834 16th Street, Santa Monica, CA

is a house in a typical post WWII mixed-use Westside neighborhood of one and two-story tract-style homes and apartment buildings. The street is lined in varying heights of *Cedrus deodora* and *Ulmus parvifolia*. Modern construction is mixed with older traditional. The street is flanked by the Santa Monica Freeway to the Northwest and the Woodlawn Cemetery from the South to the East. The cemetery provides a beautiful sky/ocean vista. On the streetscape parkway plantings will accent and coordinate with the front yard landscape.

The property, in need of a refresher, has serious privacy and view concerns. The design program entails covering the existing chainlink fence in luscious flowering vines to provide color, scent and coolness on the sun-baked north and west sides. A complementary vine will be planted on the south side that tolerates the shade and requires less maintenance. The fences are low enough to not obstruct the backyard views to the cemetery park and the sunset skies. The one existing backyard tree, *Quercus agrifolia*, will be accented with smaller trees, *Lagerstroemia indica*. Medium-sized and slower growing, they will add seasonal color and wildlife interest. Their placement will be at the SW corner to provide shade and privacy against the afternoon sun and second-story neighbors. A 36" high hedge of *Feijoa sellowiana* will be planted 3' away from the NW chainlink fence, for the dog's fenced-in controlled space area to provide needed shade.

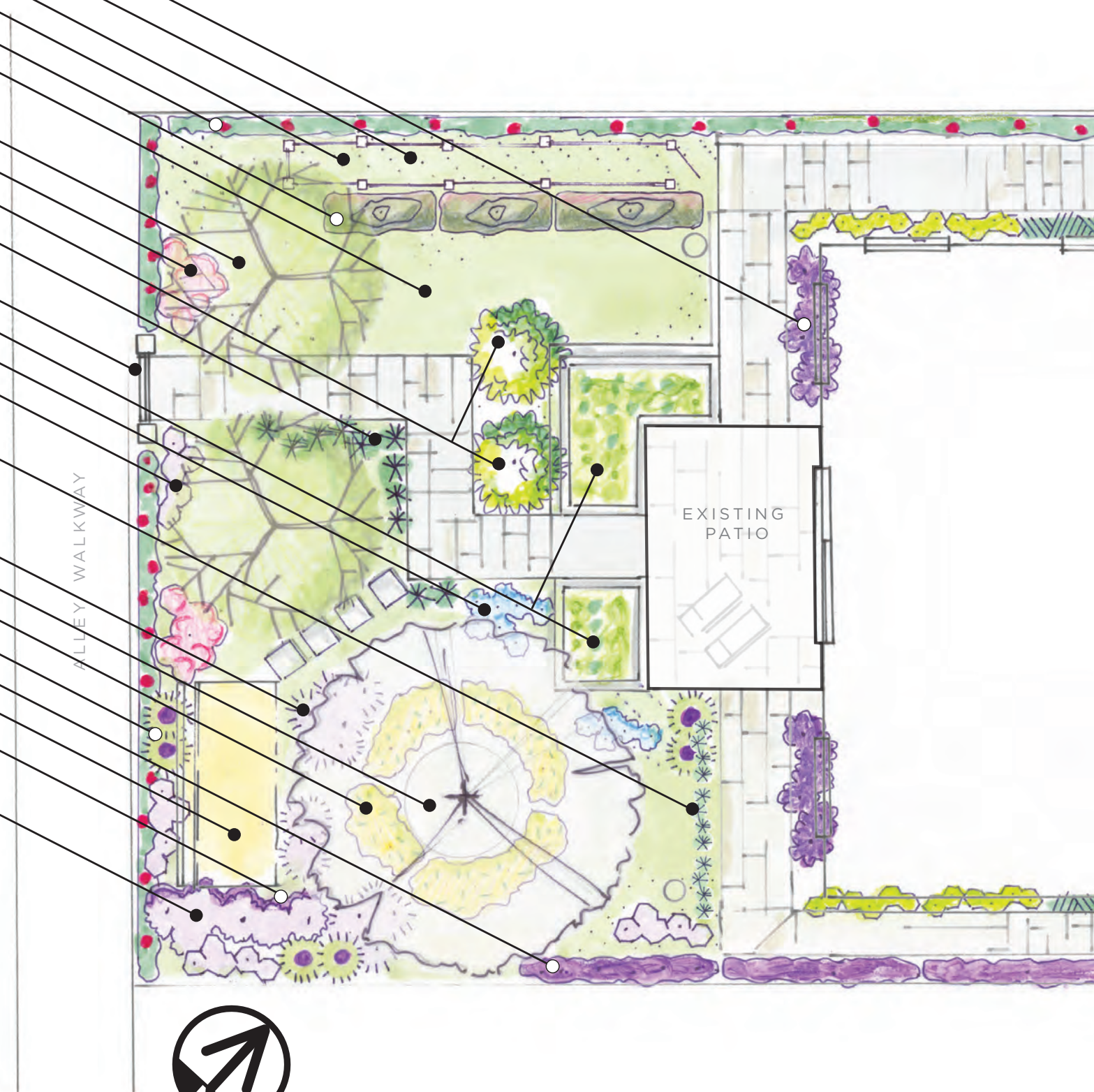
The backyard will be graded to encourage proper drainage and dispersal of water in a way that benefits all of the new plantings. The full-sun natives will be composed of flowering small to medium shrubs and groundcovers that can tolerate mild pet and foot

traffic. Pathways of square-cut slate pavers with open joints will be installed around the sides of the house, and off the back patio to the back alley access gate to encourage engagement with the space. These pathways will be surrounded by plants that attract an assortment of pollinators and wildlife. Kitchen gardenplanters border the patio corners. A scented healing garden, highlighted by *Salvia 'Bee's Bliss'*, *Lavandula stoechas 'New Madrid Blue'* and *Rosmarinus officinalis*, known for their restorative and healing properties, surround an installed PIP rubber surface area at the SE corner for the adult's yoga and meditation, or for the child's ballet or gymnastics practice.

The front yard will be remediated to dispose of the existing contractor waste materials, and new soil conditioner will be brought in to improve structure, increase aeration, water holding capacity, and add nutrients. Under the canopy of two new *Arbutus 'Marina'* a soft stair-stepped approach of shrubbery will be planted with shrubs and boundary plantings to block the view of the apartment buildings/parking lots and to provide privacy from the closely-situated sidewalk. A mini-alley of *Ceanothus concha*, pruned into small tree shrubs, will welcome near the front door. *Ginkgo biloba 'Goldspire'* will accent east of the driveway, in a tall columnar shape, for seasonal color.

The overall design program will provide much for this young urban family: shade and screening, greenery and flowers, engagement with nature, organic food growing and meditative relaxation.

- GILIA CAPITATA 1 GAL MASS PLANTING 18" SPACING
- THYMUS PRAECOX GROUNDCOVER MASS PLANTING 12" ON CENTER
- CONTROLLED DOG AREA
- FENCE VINE: PASSIFLORA ALATA 1 GAL/15' ON CENTER
- FEIJOA SELLOWIANA 3' HEDGE (3) 15 GAL 8' ON CENTER
- ST AUGUSTINE TURF PLAY AREA (00) SQ FEET
- LAGERSTROEMIA INDICA X FAURIEI (2) 36" BOX 15' ON CENTER
- OZOTHAMNUS DIOSMIFOLIUS 2.5 GAL
- FRANGULA CALIFORNICA (2) 15 GAL 15' ON CENTER
- PITTOSPORUM TENNUIFOLIUM 'GOLF BALL' 1 GAL MASS PLANTING
- GATE ACCESS TO CEMETARY PARK
- KITCHEN GARDEN PLANTERS
- PENSTEMON SPECIOSUS MASS PLANTING
- VERBENA BRASILIENSIS 1 GAL
- FESCUE GLAUCA 'ELIJAH BLUE' MASS PLANTING
- SALVIA BEE'S BLISS 1 GAL
- EXISTING QUERCUS AGRIFOLIA
- CEONOTHUS GRISEUS MASS PLANTING 18" ON CENTER
- LAVANDULA STOECHAS 1 GAL
- THUNBERGIA GRANDIFLORA VINE 1 GAL/15' CENTER
- INSTALLED PIP RUBBER YOGA/MEDITATION/PLAY SURFACE
- SCENTED HEALING GARDEN
- ROSMARINUS OFFICINALIS 'TUSCAN BLUE' 1 GAL

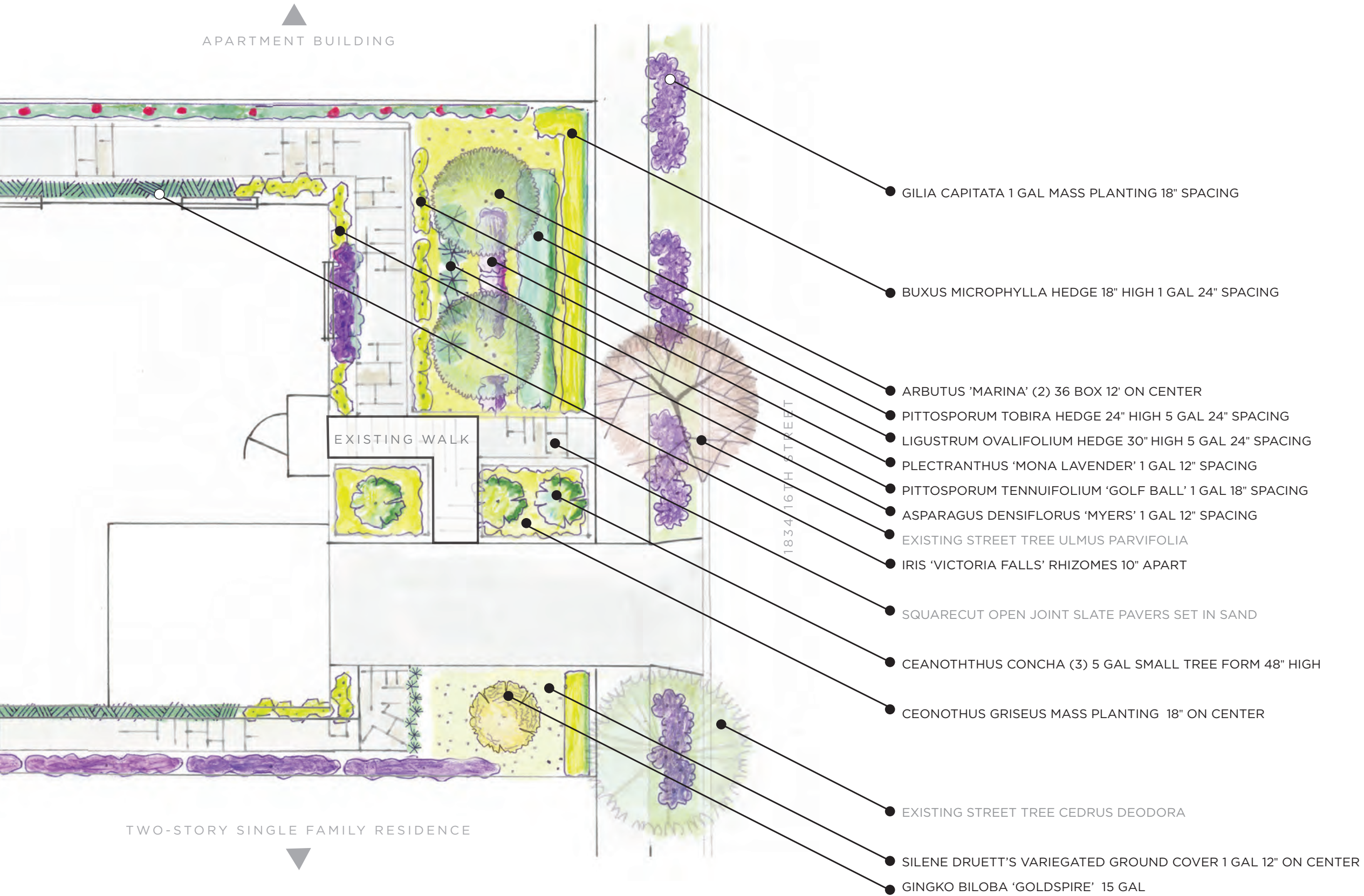


Conceptual Planting Design



SCALE 1" = 8'





- GILIA CAPITATA 1 GAL MASS PLANTING 18" SPACING
- THYMUS PRAECOX GROUND COVER MASS PLANTING 12" ON CENTER
- CONTROLLED DOG AREA
- FENCE VINE: PASSIFLORA ALATA 1 GAL/15' ON CENTER
- FEIJOA SELLOWIANA 3' HEDGE (3) 15 GAL 8" ON CENTER
- ST AUGUSTINE TURF PLAY AREA (00) SQ FEET

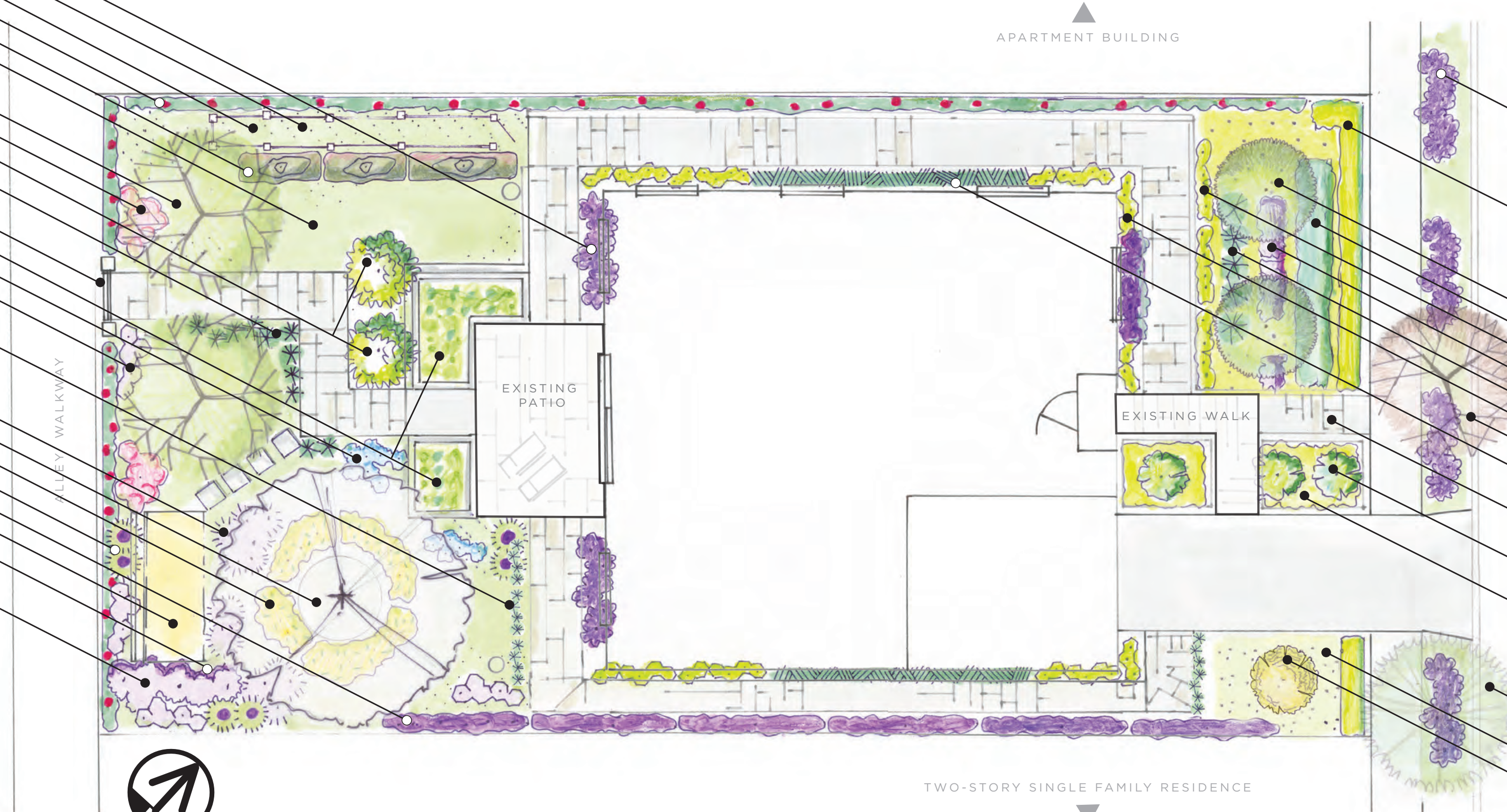
- LAGERSTROEMIA INDICA X FAURIEI (2) 36" BOX 15' ON CENTER
- OZOTHAMNUS DIOSMIFOLIUS 2.5 GAL
- FRANGULA CALIFORNICA (2) 15 GAL 15' ON CENTER
- PITTIOSPORUM TENNUIFOLIUM 'GOLF BALL' 1 GAL MASS PLANTING

- GATE ACCESS TO CEMETARY PARK
- KITCHEN GARDEN PLANTERS
- PENSTEMON SPECIOSUS MASS PLANTING
- VERBENA BRASILIENSIS 1 GAL

- FESCUE GLAUCA 'ELIJAH BLUE' MASS PLANTING

- SALVIA BEE'S BLISS 1 GAL
- EXISTING QUERCUS AGRIFOLIA
- CEONOTHUS GRISEUS MASS PLANTING 18" ON CENTER
- LAVANDULA STOECHAS 1 GAL
- THUNBERGIA GRANDIFLORA VINE 1 GAL/15' CENTER
- INSTALLED PIP RUBBER YOGA/MEDITATION/PLAY SURFACE
- SCENTED HEALING GARDEN

- ROSMARINUS OFFICINALIS 'TUSCAN BLUE' 1 GAL



- GILIA CAPITATA 1 GAL MASS PLANTING 18" SPACING

- BUXUS MICROPHYLLA HEDGE 18" HIGH 1 GAL 24" SPACING

- ARBUTUS 'MARINA' (2) 36 BOX 12' ON CENTER

- PITTIOSPORUM TOBIRA HEDGE 24" HIGH 5 GAL 24" SPACING

- LIGUSTRUM OVALIFOLIUM HEDGE 30" HIGH 5 GAL 24" SPACING

- PLECTRANTHUS 'MONA LAVENDER' 1 GAL 12" SPACING

- PITTIOSPORUM TENNUIFOLIUM 'GOLF BALL' 1 GAL 18" SPACING

- ASPARAGUS DENSIFLORUS 'MYERS' 1 GAL 12" SPACING

- EXISTING STREET TREE ULMUS PARVIFOLIA

- IRIS 'VICTORIA FALLS' RHIZOMES 10" APART

- SQUARECUT OPEN JOINT SLATE PAVERS SET IN SAND

- CEANOTHUS CONCHA (3) 5 GAL SMALL TREE FORM 48" HIGH

- CEONOTHUS GRISEUS MASS PLANTING 18" ON CENTER

- EXISTING STREET TREE CEDRUS DEODORA

- SILENE DRUETT'S VARIEGATED GROUND COVER 1 GAL 12" ON CENTER

- GINGKO BILOBA 'GOLDSPIRE' 15 GAL

Conceptual Planting Design



SCALE 1" = 8'



Plant Palette



Arbutus 'Marina'
Strawberry Tree
25' - 50' high
WUCOLS Low



*Ginkgo biloba 'Goldspire'*TM
Columnar Male Ginkgo
5'-6' wide to 14'-16' high
WUCOLS Medium



Lagerstroemia indica x fauriei 'Natchez'
Natchez Crape Myrtle
20' tall and 10' wide
WUCOLS Medium



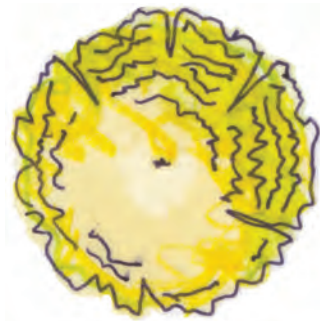
Cedrus deodara
Deodar cedar
50' tall and 30' wide
WUCOLS Low



Ulmus parvifolia
Chinese Elm
40' tall and 50' wide
WUCOLS Medium



Feijoa sellowiana
Pineapple Guava
12'-15' tall and wide
WUCOLS Low





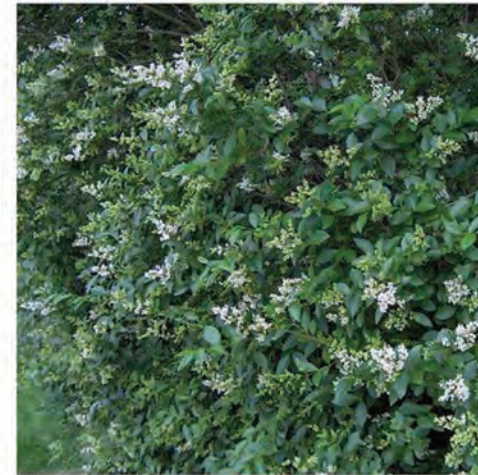
Pittosporum tobira 'Wheeler's Dwarf'
Dwarf Mock Orange
3'-4' high x 3' -4' wide
WUCOLS Medium



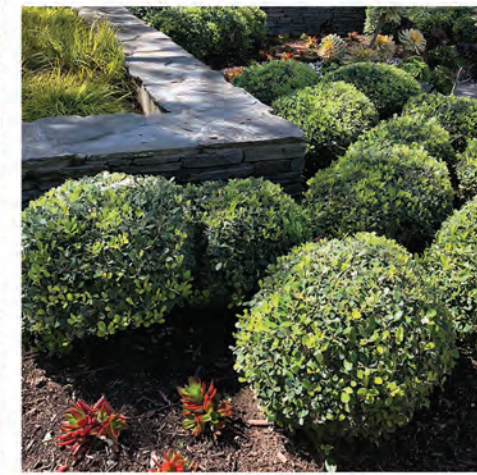
Westringia fruticosa
Coast Rosemary
4'-6' high x 4'-6' wide
WUCOLS Low



Buxus microphylla
Japanese Boxwood
4'-6' high x 4'-6' wide
WUCOLS Medium



Ligustrum ovalifolium
California Privet
10' to 15' tall
WUCOLS Medium



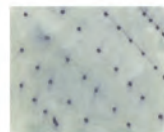
Pittosporum tenuifolium 'Golf Ball'
Golf Ball Kohuhu
2' high x 2' wide
WUCOLS Medium



Plectranthus 'Mona Lavender'
'Plepalila' / Lavender Spur Flower
1'-2' high x 1'-2' wide
WUCOLS Medium



Thymus praecox
Elfin Thyme
Groundcover up to 8"
WUCOLS Low



Silene Druett's Variegated
Sea Campion
Groundcover 4" high x 12" wide
WUCOLS Medium



Ceanothus griseus var. *horizontalis*
'Diamond Heights'
Variegated Carmel Creeper
Groundcover 1' high x 4'-6' wide
WUCOLS Medium



Festuca glauca 'Elijah Blue'
Elijah Blue Fescue
Groundcover 8"- 10" tall
WUCOLS Low



Ceanothus concha
California Mountain Lilac
6' x 6'
WUCOLS Low



Malacothamnus densiflorus
Yellow Stem Bush Mallow
3'-7' high x 3' -7' wide
WUCOLS Low, Very Low





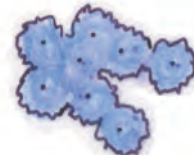
Frangula californica
Coffeeberry
Plant: 3' - 12' Tree 12'
WUCOLS Low



Salvia 'Bee's Bliss'
Bee's Bliss Sage
1'-2' high x 6'-8' wide
WUCOLS Low



Penstemon speciosus
Royal Penstemon
2' high x 2' wide
WUCOLS Very Low



Gilia capitata
Blue Field Gilia
.33' to 3' tall
WUCOLS Very Low



Rosmarinus officinalis 'Tuscan Blue'
Tuscan Blue Rosemary
3'-6' high x 3'-6' wide
WUCOLS Low



Verbena brasiliensis
Brazilian Verbena
18"-24" high x 24"-36" wide
WUCOLS Low



Asparagus densiflorus 'Myers'
Foxtail Fern
2' high x 4' wide
WUCOLS Medium



Iris 'Victoria Falls'
Yellow Stem Bush Mallow
3'-7' high x 2'-7' wide
WUCOLS Medium



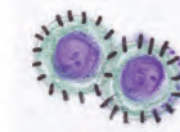
Thunbergia grandiflora
Blue trumpetvine
Climbing vine up to 15'-30' long
WUCOLS Medium



Passiflora alata
Winged-Stem passionflower
Climbing vine 10'-20'
WUCOLS Medium



Lavandula stoechas 'New Madrid' Blue
Spanish Lavender
18"-24" high x 12"-24" wide
WUCOLS Low



Ozothamnus diosmifolius
Rice flower
3'-5' high x 2'-4' wide
WUCOLS Medium



Sun/Shade Study

Terri Larronde

LD 5 Planting Design

UCLA Extension Landscape Architecture

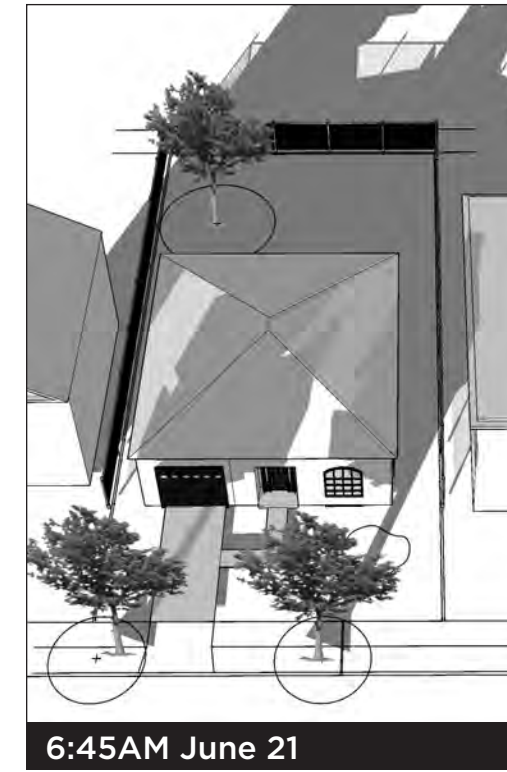
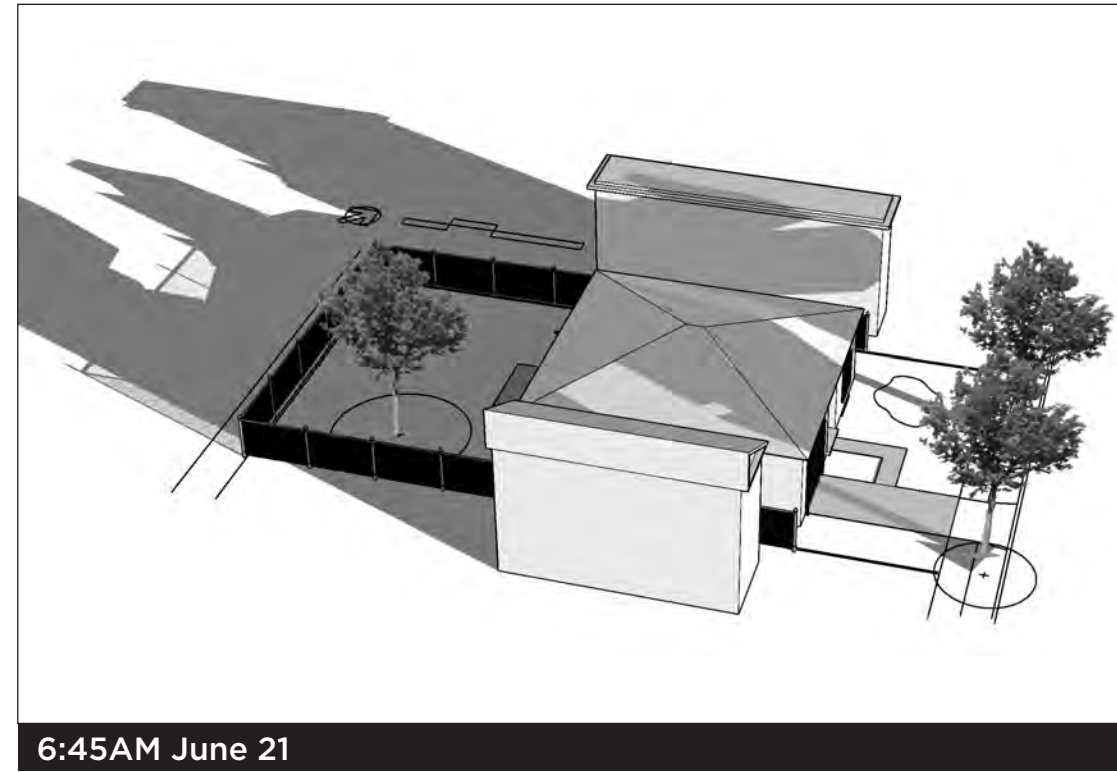
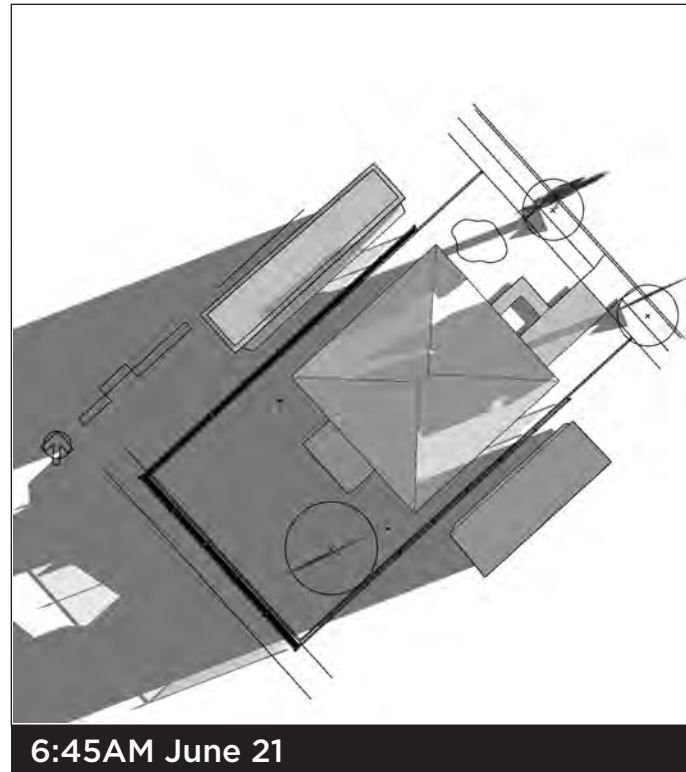
Spring 2020

Project 2

1834 16th Street, Santa Monica

April 14, 2020

MORNING



Sun/Shade Analysis

- Sunset Zone 24
- Morning: Sun in frontyard
- Evening: Sun in backyard
- Soil: Sandy loam
- Tall buildings on each side of the house provide shade all day, except near the extreme front and extreme back of the sides of the house.
- Mid-day: Sun in front and back. Sides have sun at noon.

EVENING

