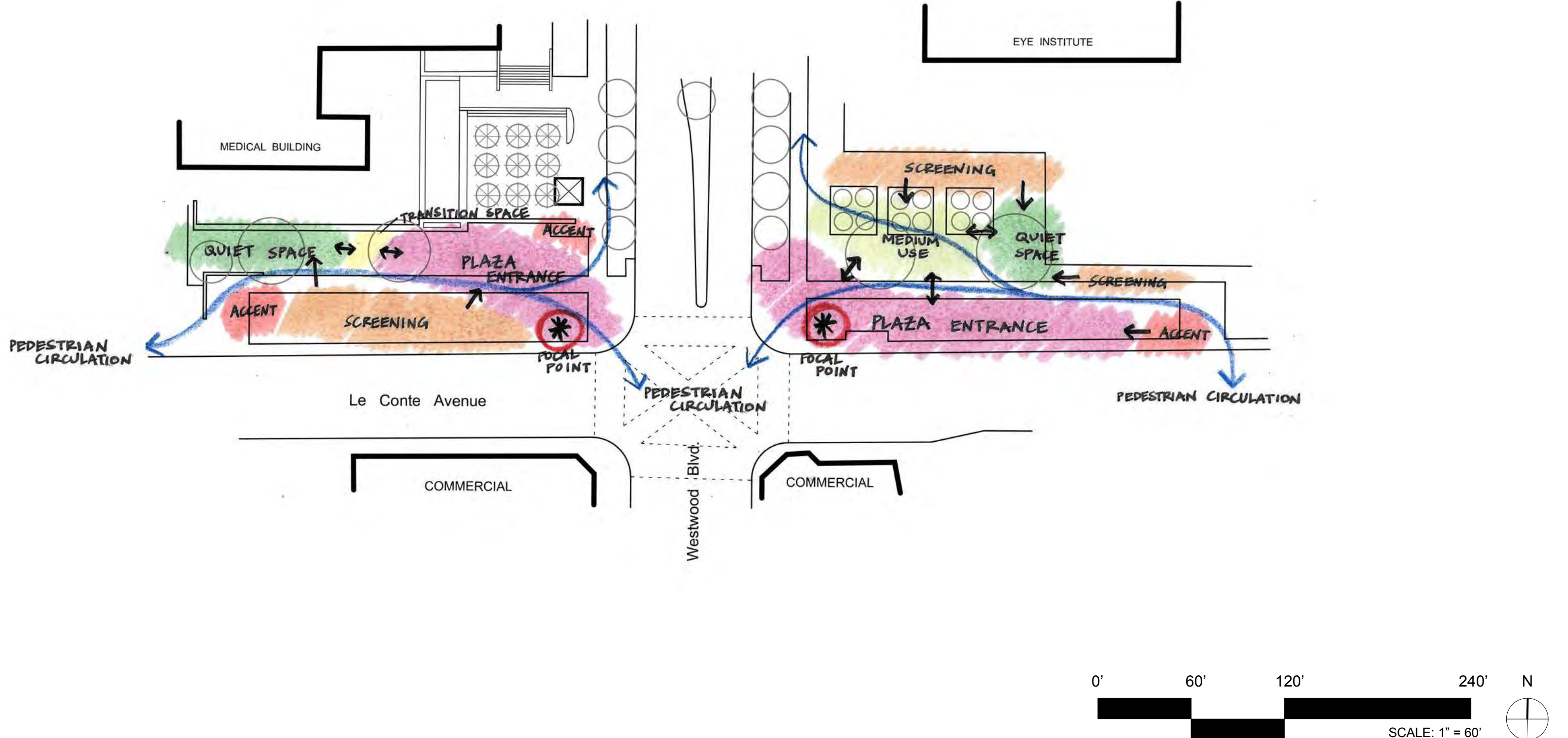
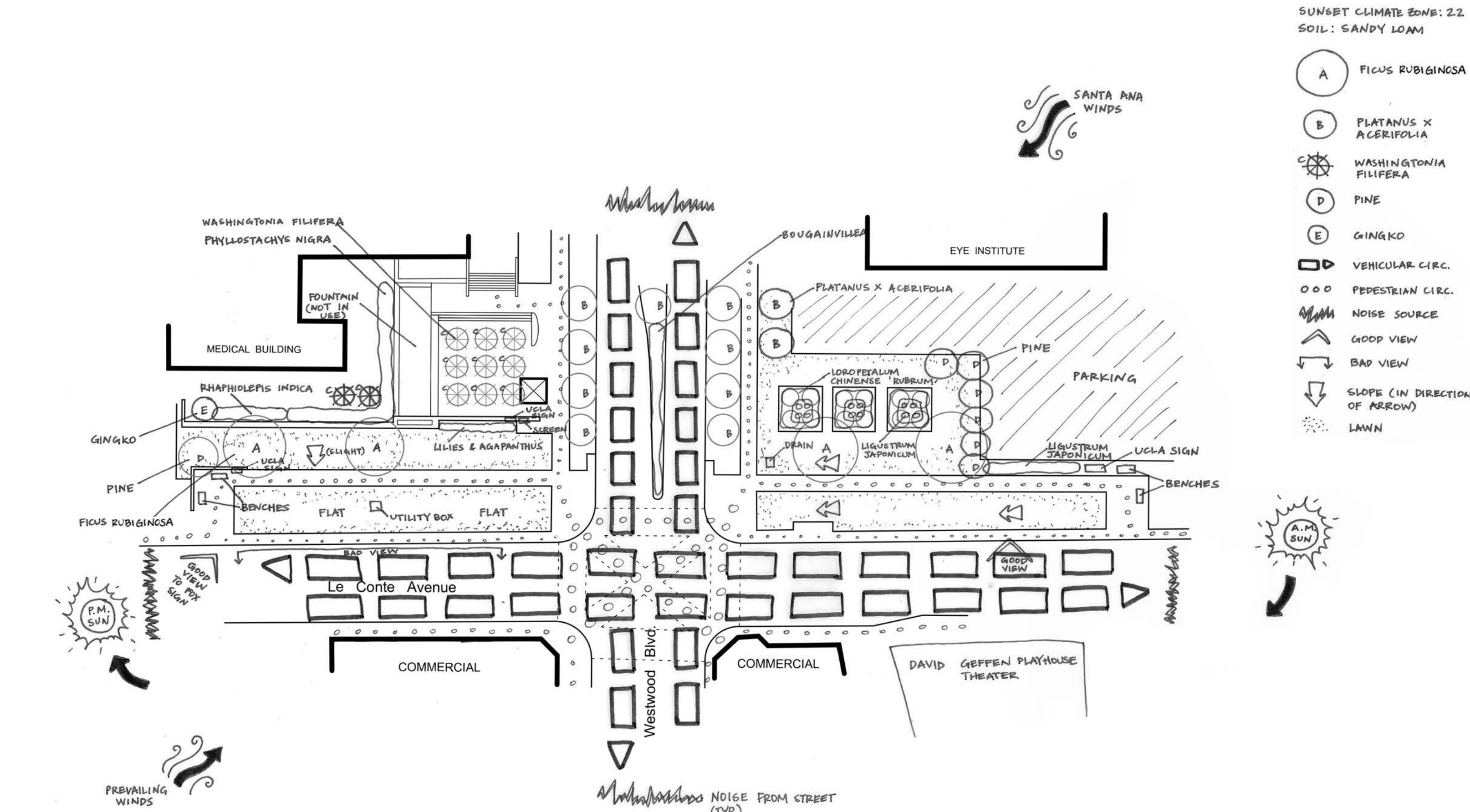


EXISTING SITE PHOTOS



SITE ANALYSIS



DESIGN NARRATIVE

Located at the intersection of Le Conte Ave. & Westwood Blvd. at the Southern Entrance of UCLA, the current landscape lacks the distinction it deserves as a main gateway to the renowned college campus. However, some of the positive attributes of the current design included: the existing circulation pathway outlined and accented with brick (a standard on the UCLA campus) in addition to the tree choices of *Washingtonia filifera*, *Pinus canariensis*, and *Platanus x acerifolia*. As such, in redesigning the campus entrance, it was important to utilize these as a starting point for the future design.

The new design of the UCLA Southern Entrance focuses upon central planting areas shaded with Drake Chinese Elm and surrounded by benches to encourage students and passer-bys to take advantage of the space.

In paying respect to the existing raised planters on the eastern side, the new design keeps one and uses this as the premise for the shape of this central planting area. A grid of trees radiates from the aforementioned central planting area, with specific trees and plants chosen to draw attention to, accent, or screen views. A lawn area allows for gathering space and versatility in use, but also creates a sequence of pedestrian spaces. Moreover, to encourage users from the David Geffen Playhouse Theater on the southeastern side of the intersection, the plan leaves an entry through the planting area and signals this new transition by framing it with *Washingtonia filifera*.

The planting design employs texture, complementary green tones, and pops of color to the space with year-round interest through the plant selection, making a strong statement for both motorists and pedestrians to see.

PLANT PALETTE

	FALL	WINTER	SEASON OF INTEREST	SPRING	SUMMER
<i>Pinus canariensis</i>	[Color bar]				
<i>Washingtonia filifera</i>	[Color bar]				
<i>Ulmus parvifolia</i> 'Drake'	[Color bar]				
<i>Pyrus kawakamii</i>	[Color bar]				
<i>Acer palmatum</i> 'Atropurpureum'	[Color bar]				
<i>Russelia equisetiformis</i>	[Color bar]				
<i>Salvia</i> x 'Dara's Choice'	[Color bar]				
<i>Cistus x hybridus</i>	[Color bar]				
<i>Artemisia</i> 'Powis Castle'	[Color bar]				
<i>Lomandra longifolia</i> 'Breeze'	[Color bar]				
<i>Dianella revoluta</i> 'Baby Bliss'	[Color bar]				
<i>Liriope muscari</i> 'Big Blue'	[Color bar]				
<i>Festuca glauca</i> 'Elijah Blue'	[Color bar]				
Tiflawn Bermuda Grass & Perennial Rye Grass	[Color bar]				

Pinus canariensis
Canary Island Pine
Height: 50-80'
Width: 20-35'
WUCOLS: Low
Exposure: Full sun/part shade

Washingtonia filifera
California Fan Palm
Height: 50-65'
Width: 10-15'
WUCOLS: Medium
Exposure: Full sun

Ulmus parvifolia 'Drake'
Drake Chinese Elm
Height: 35-45'
Width: 35-50'
WUCOLS: Medium
Exposure: Full sun/part shade

Pyrus kawakamii
Evergreen Pear
Height: 15-30'
Width: 15-30'
WUCOLS: Medium
Exposure: Full sun/part shade

Acer palmatum 'Atropurpureum'
Japanese Maple
Height: 15-20'
Width: 15-20'
WUCOLS: Medium
Exposure: Full sun/part shade

Russelia equisetiformis
Coral Fountain
Height: 4-5'
Width: 4-5'
WUCOLS: Medium
Exposure: Sun/shade

Salvia x 'Dara's Choice'
Sonoma Sage
Height: 3-4'
Width: 3-4'
WUCOLS: Low
Exposure: Full sun/part shade

Cistus x hybridus
White Rockrose
Height: 2-4'
Width: 4-5'
WUCOLS: Low
Exposure: Full sun

Artemisia 'Powis Castle'
Wormwood
Height: 2-4'
Width: 4-6'
WUCOLS: Medium
Exposure: Full sun/part shade

Lomandra longifolia 'Breeze'
Dwarf Mat Rush
Height: 2-3'
Width: 2-4'
WUCOLS: Low
Exposure: Full sun/part shade

Dianella revoluta 'Baby Bliss'
Baby Bliss Flax Lily
Height: 1-2'
Width: 1-2'
WUCOLS: Low
Exposure: Sun/shade

Liriope muscari 'Big Blue'
Big Blue Lilyturf
Height: 1-1.5'
Width: 1-1.5'
WUCOLS: Medium
Exposure: Sun/shade

Festuca glauca 'Elijah Blue'
Blue Fescue
Height: <1'
Width: 1-2'
WUCOLS: Low
Exposure: Full sun

Tiflawn Bermuda Grass & Perennial Rye Grass Lawn Mix
Optimal Irrigation: 80% ETO

CONCEPTUAL DESIGN

GENERAL NOTES:

1. UNLESS OTHERWISE NOTED, ALL PLANTING AREAS SHALL RECEIVE A 3" LAYER OF TREE CHIP MULCH.
2. ALL HARDSCAPE SHALL BE CONCRETE OUTLINED WITH BRICK PAVERS, IN THE SAME VEIN AS THE EXISTING HARDSCAPE (SEE EXISTING SITE PHOTOS ON PAGE 1).
3. CENTRAL PLANTING AREAS WITH ULMUS PARVIFOLIA 'DRAKE' ARE UNDERPLANTED WITH:
SALVIA X 'DARA'S CHOICE'
ARTEMISIA 'POWIS CASTLE'
DIANELLA REVOLUTA 'BABY BLISS'
4. THE GROUNDCOVERS LISTED BELOW SHALL BE PLANTED ACCORDINGLY:
DIANELLA REVOLUTA 'BABY BLISS' @ 18" O.C.
LIRIOPE MUSCARI 'BIG BLUE' @ 12" O.C.
FESTUCA GLAUCA 'ELIJAH BLUE' @ 12" O.C.



DIANELLA REVOLUTA 'BABY BLISS' LOMANDRA LONGIFOLIA 'BREEZE' FESTUCA GLAUCA 'ELIJAH BLUE' PINUS CANARIENSIS SALVIA X 'DARA'S CHOICE'

EXISTING RAISED PLANTER

EXISTING FOUNTAIN
MEDICAL BLDG.

Westwood Blvd.

Le Conte Avenue

COMMERCIAL

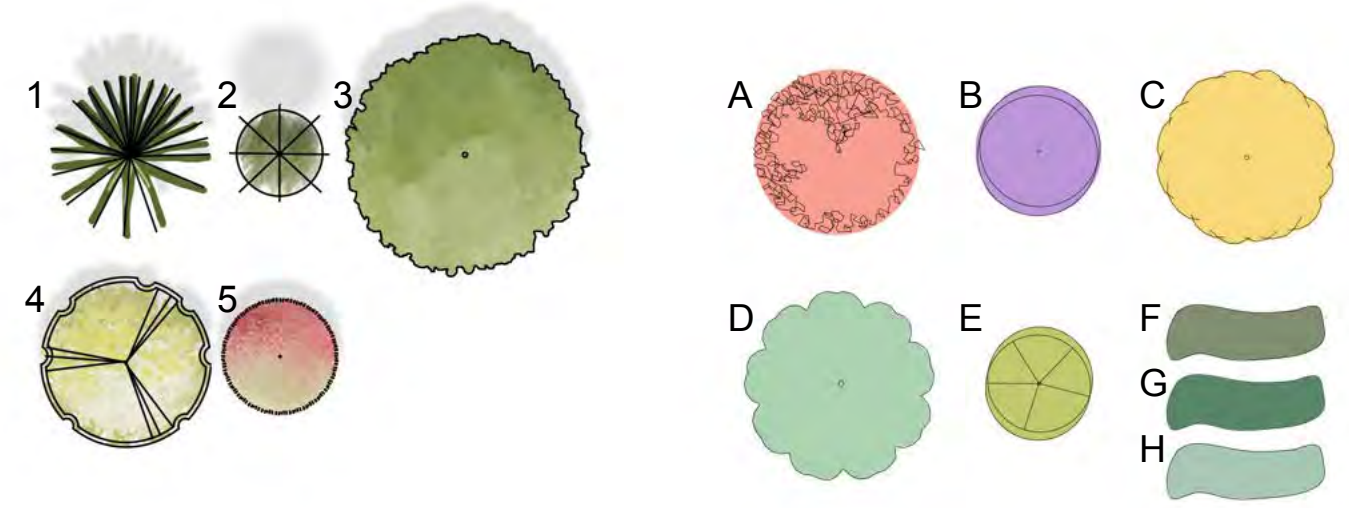
COMMERCIAL

PYRUS KAWAKAMII LAWN (TYP.) ACER PALMATUM 'ATROPURPUREUM'

ARTEMISIA 'POWIS CASTLE' ULMUS PARVIFOLIA 'DRAKE'

CISTUS X HYBRIDUS BENCHES (TYP.) WASHINGTONIA FILIFERA LIRIOPE MUSCARI 'BIG BLUE'

RUSSELIA EQUISETIFORMIS



TREES:

1. PINUS CANARIENSIS
2. WASHINGTONIA FILIFERA
3. ULMUS PARVIFOLIA 'DRAKE'
4. PYRUS KAWAKAMII
5. ACER PALMATUM 'ATROPURPUREUM'

SHRUBS & GROUNDCOVERS:

- A. RUSSELIA EQUISETIFORMIS
- B. SALVIA X 'DARA'S CHOICE'
- C. CISTUS X HYBRIDUS
- D. ARTEMISIA 'POWIS CASTLE'
- E. LOMANDRA LONGIFOLIA 'BREEZE'
- F. DIANELLA REVOLUTA 'BABY BLISS'
- G. LIRIOPE MUSCARI 'BIG BLUE'
- H. FESTUCA GLAUCA 'ELIJAH BLUE'

