



**LANDSCAPE DESIGN 5
PROJECT 2
ETHAN FISHER
MAY 20, 2020**

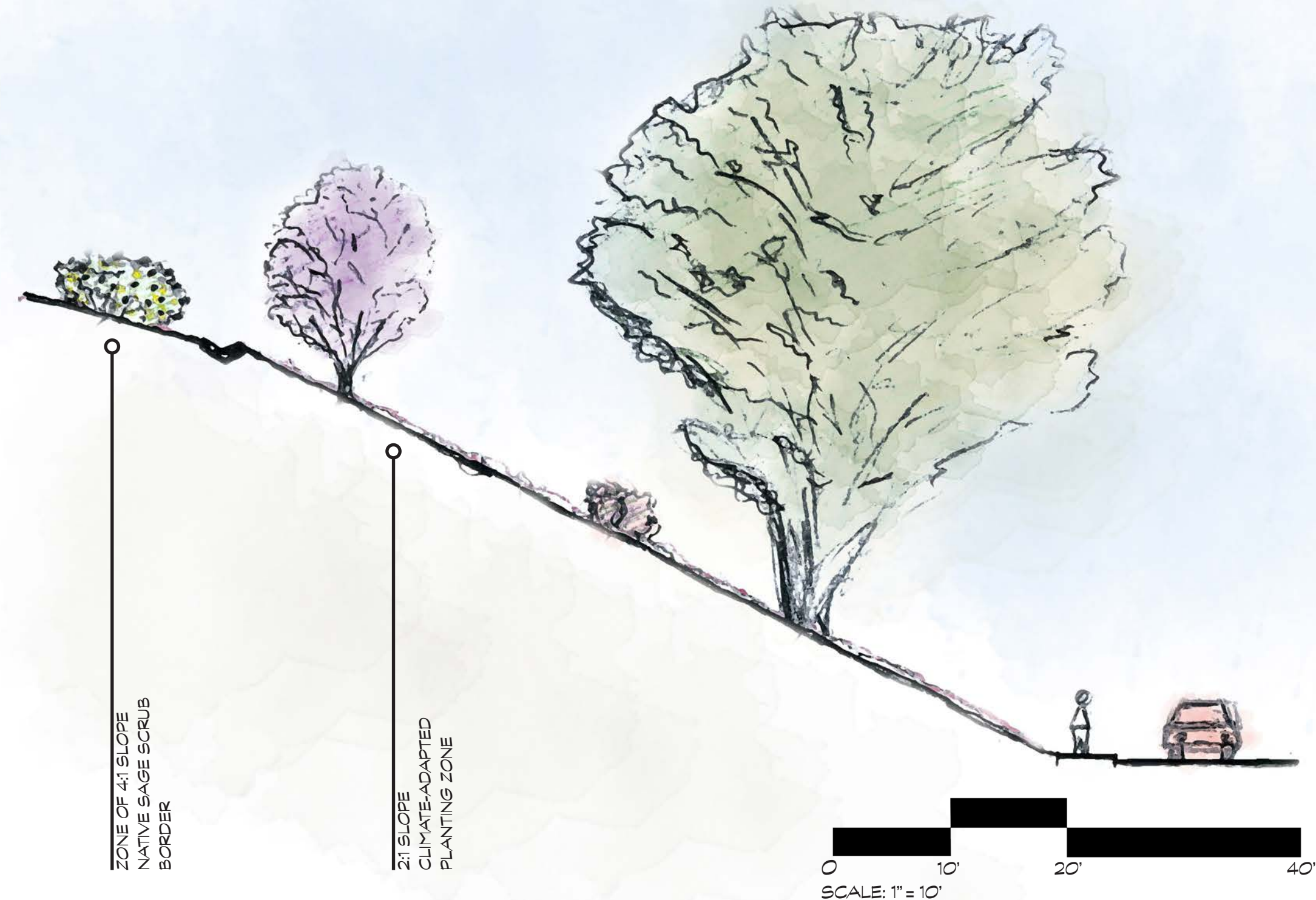
DESIGN PROGRAM

GOALS:

1. RESTORE SAGE SCRUB COMMUNITY
2. SLOPE STABILIZATION
3. SHRUBS - 1:100 SQ. FT.
4. TREES 1:1000 SQ. FEET
5. HABITAT PLANTINGS
6. PLANTINGS FOR PEDESTRIAN INTEREST
7. PLANTINGS FOR VEHICULAR INTEREST
8. CALIFORNIA NATIVE AND WATERWISE COMPANION PLANTINGS

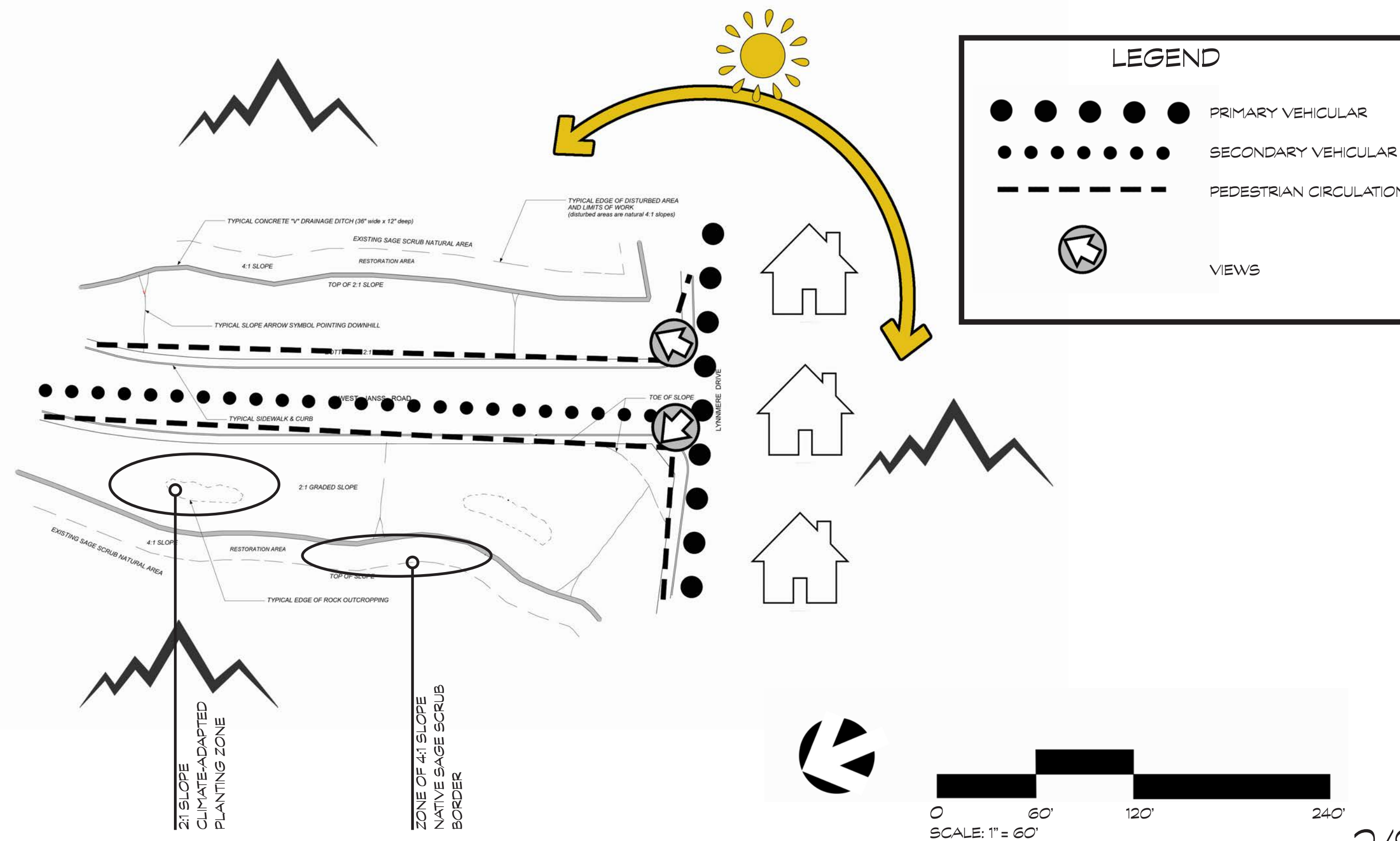
WITH THESE GOALS IN MIND THE DESIGN PROGRAM SOUGHT TO ADDRESS KEY ISSUES LIKE EXPOSED SOIL CONDITION. A VARIETY OF PLANTINGS ARE SELECTED INCLUDING FAST GROWING GRASSES THAT CAN BE HYDROSEEDDED FOR IMMEDIATE STABILIZATION AND LONG TERM PLANTINGS INCLUDING LARGE EVERGREEN TREES WHICH WILL PROVIDE STRUCTURE TO THE LANDSCAPE LONG-TERM. LARGE SWATHS OF FLOWERING PERENNIALS INCLUDING SALVIAS WILL PROVIDE SEASONAL INTEREST AND HABITAT FOR INVERTEBRATES AND BIRDS. THE LANDSCAPE IS PRIMARILY PLANTED WITH NATIVE SPECIES TO SOUTHERN CALIFORNIA AND THE UPPER REACH OF THE SLOPE IS EXCLUSIVELY PLANTED WITH NATIVE SPECIES. THE TREES ARE CLUSTERED TO PROVIDE A NATURAL APPEARANCE AND OPEN UP THE VIEWS.


TYPICAL SLOPE



COASTAL SAGE SCRUB IS A RARE HABITAT TYPE FOUND ALONG COASTAL TERRACES AND FOOTHILLS OF SOUTHERN CALIFORNIA AND NORTHWESTERN MEXICO. INTERSPERSED WITH CHAPARRAL, OAK WOODLAND AND SALT MARSH, COASTAL SAGE SCRUB TYPICALLY GROWS BELOW 3,000 FEET AMONG A DIVERSE ASSEMBLAGE OF PLANTS.

SITE ANALYSIS



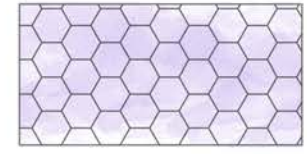
-  *Chilopsis linearis*
 -  *Rhus integrifolia*
 -  *Arctostaphylos pungens*
 -  *Salvia clevelandii*
 -  *Salvia 'Love and Wishes'*
 -  *Muhlenbergia rigens*
 -  *Ribes indecorum*
 -  *Opuntia littoralis*
 -  *Opuntia prolifera*
 -  *Ceanothus 'Julia Phelps'*
 -  *Baccharis pilularis*
 -  *Salvia 'Amistad'*
 -  *Yucca whipplei*
-  *Angophora costata*
 -  *Pinus torreyana*
 -  *Quercus tomentella*



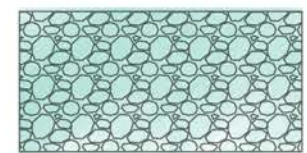
HYDROSEED MIX #1
Artemesia californica 20%
Diplacus aurantiacus 5%
Encella californica 15%
Eriogonum fasciculatum 20%
Salvia apiana 20%
Salvia mellifera 20%



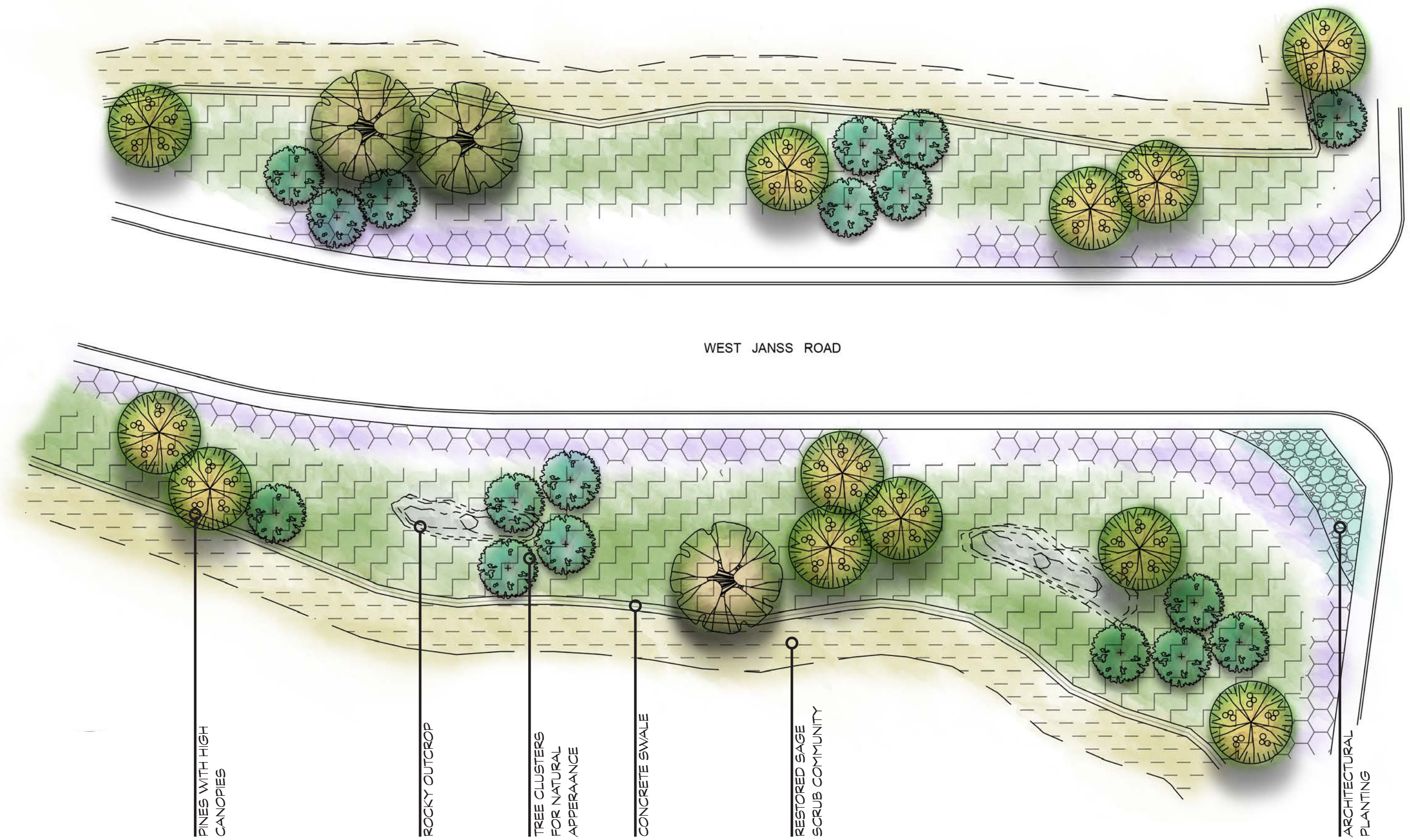
HYDROSEED MIX #2
Acmispon glaber 25%
Bromus carinatus 'Cucamonga' 10%
Diplacus aurantiacus 5%
Encella californica 15%
Festuca microstachys 40%
Trifolium ciliolatum 15%



GROUNDCOVER #1 - 1G POTS
Eremophila maculata 'Outback Sunrise'
Zauschneria californica 'Everett's Choice'
Verbena lilacina 'De La Mina'
Arctostaphylos edmundsii 'Carmel Sur'



GROUNDCOVER #2 - 1G POTS
Festuca glauca 'Elijah Blue'
Agave 'Blue Flame'
Agave 'Blue Glow'
 3"-4" RIVER COBBLE
 FIELD SPECIFY PLACEMENT

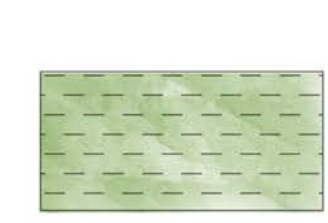


PLANTING LEGEND

CONCEPT PLAN TREES



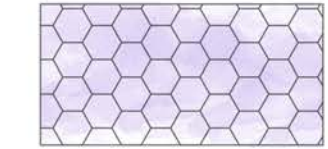
-  *Chilopsis linearis*
 -  *Rhus integrifolia*
 -  *Arctostaphylos pungens*
 -  *Salvialevelandii*
 -  *Salvia 'Love and Wishes'*
 -  *Muhlenbergia rigens*
 -  *Ribes indecorum*
 -  *Opuntia littoralis*
 -  *Opuntia prolifera*
 -  *Ceanothus 'Julia Phelps'*
 -  *Baccharis pilularis*
 -  *Salvia 'Amistad'*
 -  *Yucca whipplei*
-  *Argophora costata*
 -  *Pinus torreyana*
 -  *Quercus tomentella*



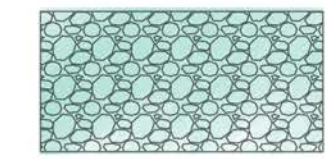
HYDROSEED MIX #1
Artemisia californica 20%
Diplacus aurantiacus 5%
Encella californica 15%
Eriogonum fasciculatum 20%
Salvia apiana 20%
Salvia mellifera 20%



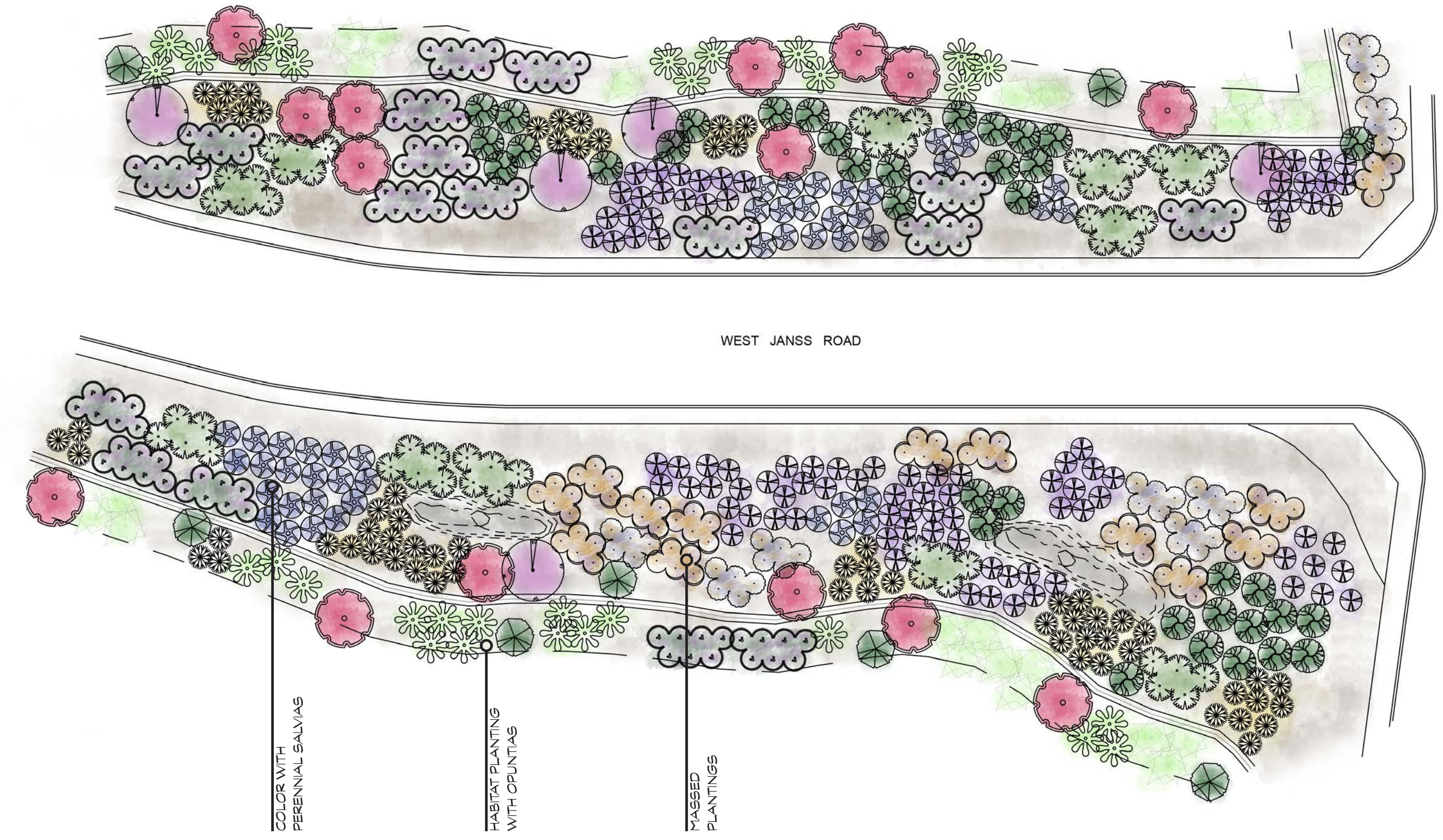
HYDROSEED MIX #2
Acmispon glaber 25%
Bromus carinatus 'Cucamonga' 10%
Diplacus aurantiacus 5%
Encella californica 15%
Festuca microstachys 40%
Trifolium ciliolatum 15%



GROUNDCOVER #1 - 1G POTS
Eremophila maculata 'Outback Sunrise'
Zauschneria californica 'Everett's Choice'
Verbena lilacina 'De La Mina'
Arctostaphylos edmundsii 'Carmel Sur'



GROUNDCOVER #2 - 1G POTS
Festuca glauca 'Elijah Blue'
Agave 'Blue Flame'
Agave 'Blue Glow'
 3"-4" RIVER COBBLE
 FIELD SPECIFY PLACEMENT



PLANTING LEGEND

CONCEPT PLAN SHRUBS



Chilopsis linearis
Desert Willow
WUCOLS Very Low; 15'-30'H x 10'-20'W



Rhus integrifolia
Lemonade Berry
WUCOLS Very Low; 3'-12'H x 10'-15'W



Arctostaphylos pungens
Mexican Manzanita
WUCOLS Very Low; 6'H x 6'W



Salvia clevelandii
Salvia Cleveland
WUCOLS Very Low; 5'H x 6'W



Salvia 'Love and Wishes'
Salvia Love and Wishes
WUCOLS Low/Medium; 4'H x 4'W



Muhlenbergia rigens
Deer Grass
WUCOLS Low; 2'-3'H x 3'W



Ribes indecorum
White Flowering Currant
WUCOLS Very Low; 8'H x 5'W



Opuntia littoralis
Coast Prickly Pear
WUCOLS Very Low; 4'H x 6'W



Opuntia prolifera
Coastal Cholla
WUCOLS Very Low; 3'H x 6'W



Geanotus 'Julia Phelps'
California Lilac
WUCOLS Low-Very Low;
6'-8'H x 6'W



Baccharis pilularis
Coyote Bush
WUCOLS Low; 6'-6'H



Salvia 'Amistad'
Salvia Amistad
WUCOLS Low/Medium; 4'H x 4'W



Yucca whipplei
Yucca
WUCOLS Very Low; 3'-4'H x 3'-4'W



Angophora costata
Sydney Red Gum
WUCOLS Low; 50'-65'H x 30'-50'W



Pinus torreyana
Torrey Pine
WUCOLS Low; 20'-40'H x 30'W



Quercus tomentella
Island Oak
WUCOLS Low; 20'-40'H x 30'W

HYDROSEED MIX #1



Artemisia californica 20%
California Sagebrush
WUCOLS Very Low; 2'-4'H x 2'-4'W



Salvia apiana 20%
White Sage
WUCOLS Very Low; 3'-5'H x 4'-6'W



Salvia mellifera 20%
Black Sage
WUCOLS Very Low; 3'-6'H x 6'-8'W



Diplacus aurantiacus 5%
Sticky Monkey Flower
WUCOLS UNK/Very Low; 3'-4'H x 3'-4'W



Encelia californica 15%
Coast Sunflower
WUCOLS Very Low; 2'-4'H x 2'-4'W



Eriogonum fasciculatum 20%
California Buckwheat
WUCOLS Very Low; 2'-4'H x 4'-6'W

GROUNDCOVER #1



Eremophila maculata
Outback Sunrise
WUCOLS Low; 2'H x 10'W



Zauschneria californica
Everett's Choice
Everett's Choice California Fuschia
WUCOLS Low; 6'H x 5'W



Verbena lilacina 'De La Mina'
Cedros Island Verbena
WUCOLS Low; 1'-2'H x 3'-4'W



Arctostaphylos edmundsii
'Carmel Sur'
Little Sur Manzanita
WUCOLS Low; 1'H x 5'W

HYDROSEED MIX #2



Acmispon glaber 25%
Deer Weed
WUCOLS Very Low; 2'-3'H x 3'W



Bromus carinatus 'Cucamonga' 10%
California Brome
WUCOLS UNK/Very Low; 1'-5'H x 5'W



Festuca microstachys 40%
Pacific Fescue
WUCOLS UNK/Very Low; 1'-5'H x 5'W



Diplacus aurantiacus 5%
Sticky Monkey Flower
WUCOLS UNK/Very Low; 3'-4'H x 3'-4'W



Encelia californica 15%
Coast Sunflower
WUCOLS Very Low; 2'-4'H x 2'-4'W



Trifolium ciliolatum 15%
Foothill Clover
WUCOLS UNK/Very Low; 1'-3'H

GROUNDCOVER #2



Festuca glauca 'Elijah Blue'
Blue Fescue
WUCOLS Low; 1'W x 1'H



Agave 'Blue Flame'
Blue Flame Agave
WUCOLS Low; 2'-3'H x 3'-4'W



Agave 'Blue Glow'
Blue Glow Agave
WUCOLS Low; 1'-2'H x 2'-3'W



3"-4" River Cobble