

THOUSAND OAKS SLOPE RESTORATION

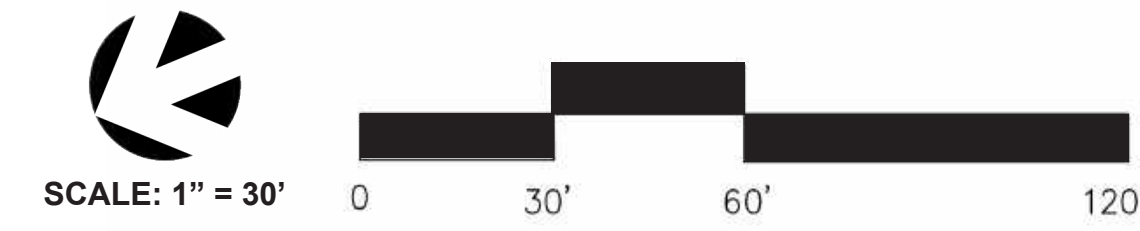
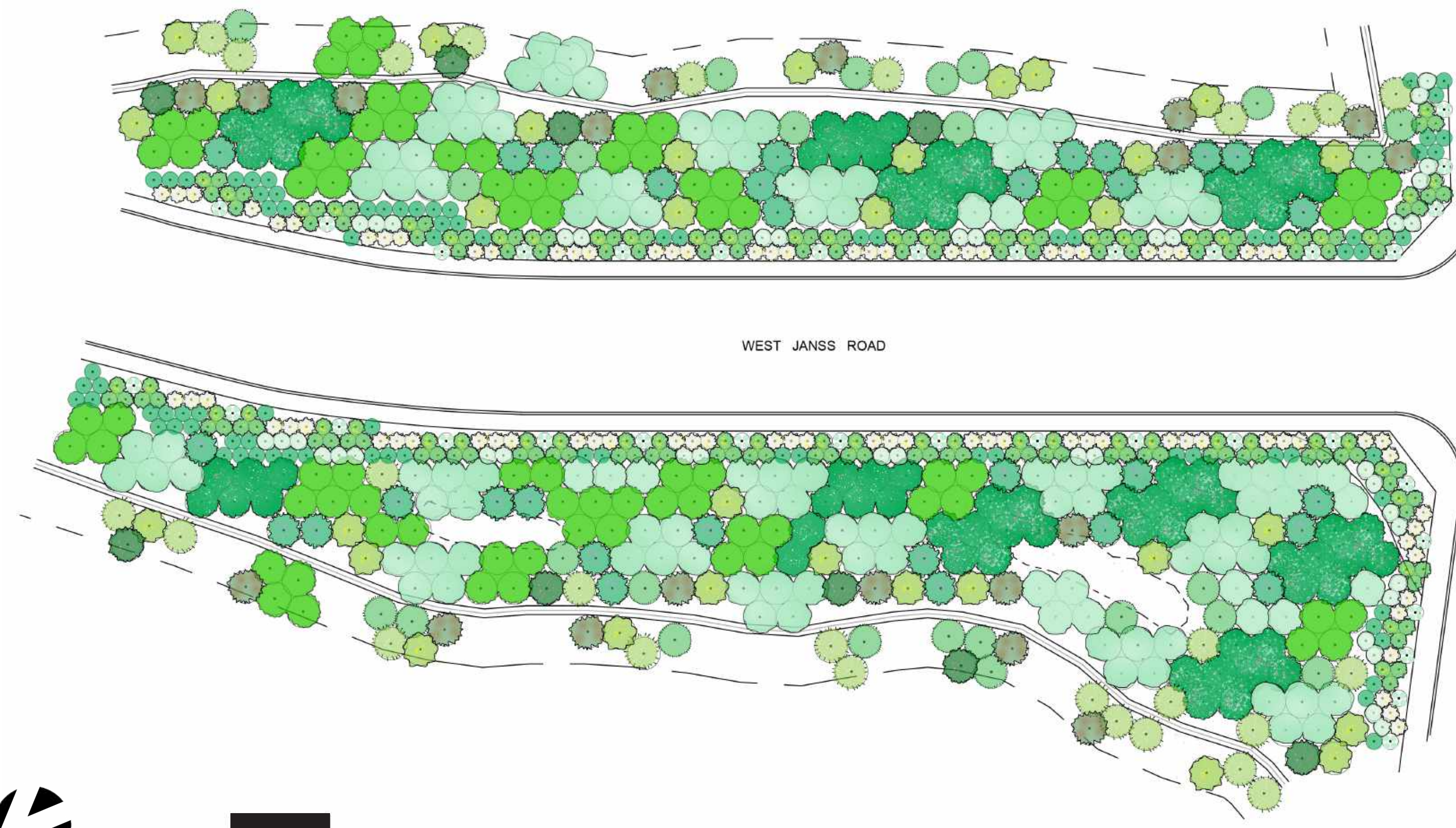
DESIGN NARRATIVE

Sitting at the edge of Arroyo Conejo Open Space, this barren slope in Thousand Oaks, CA presents an opportunity to restore sage scrub habitat and improve the pedestrian and driver experience while solving the engineering problem of erosion control. With a native (and almost entirely regionally native) plant palette, I opted for a naturalistic approach to planting design to try my best to mimic and complement millions of years of evolution and natural processes.

Deep-rooted shrubs and trees like laurel sumac and lemonade berry anchor the upper part of the slope, with the indicator sage scrub species black sage, California buckwheat, and California sagebrush blanketing the hillside. California wild roses nestle in the partial shade of the new trees. A hydroseed mix of giant rye and monkeyflower add pops of color and texture to the upper area, while dudleyas and fuchsias wedge into the rocky areas. At street level, smaller scale, regionally specific, and bizzarely beautiful plants like Conejo buckwheat, dudleya, Santa Barbara Milkvetch interlock in a semi-formal pattern with brittlebush, deerweed, and a row of desert willows on each side of the street. These plants help to create a sense of place and identity that is lost in the vast majority of the surrounding developed area. This strip of yellows, orange, and beige flowers is enhanced in spring with annual lupine and year round foliage texture from yarrow.

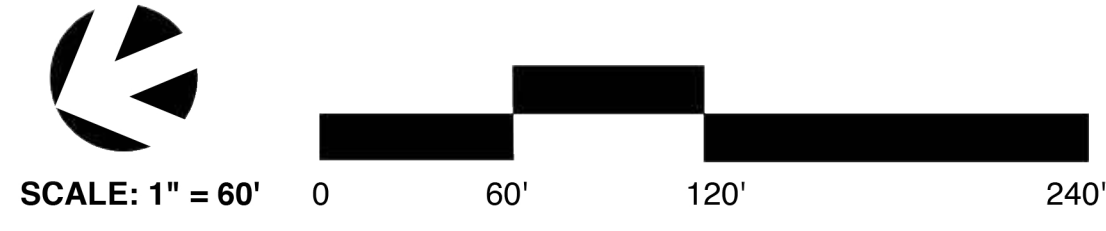
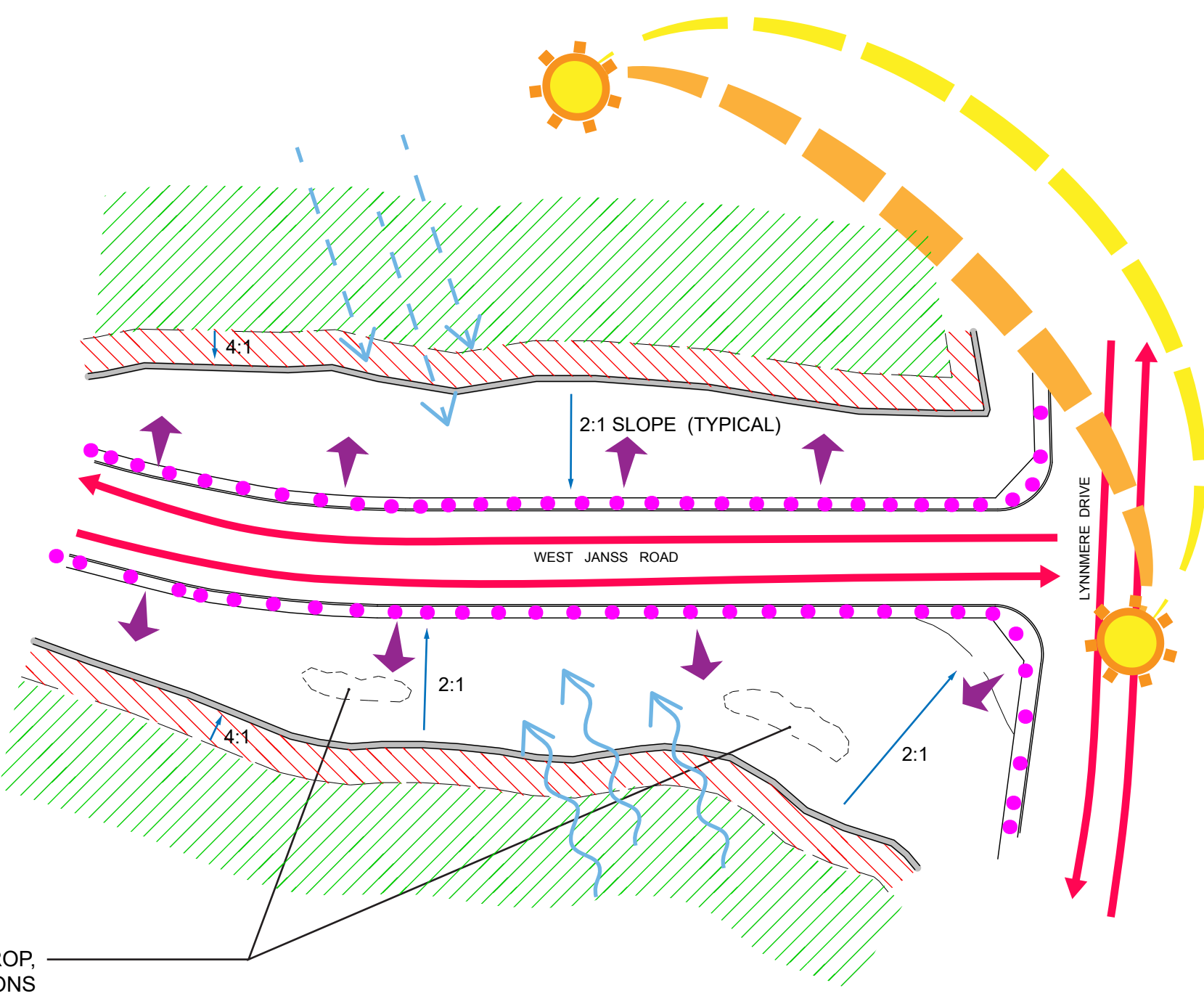
Coastal cholla and beavertail cactus also add to this regional identity while providing critical habitat for the endangered cactus wren. The cacti meander up the hillside and across to the existing coast sage scrub.

SHRUB PLANTING PLAN

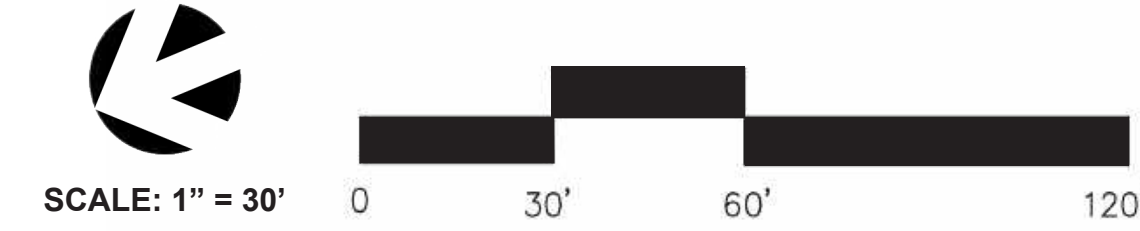
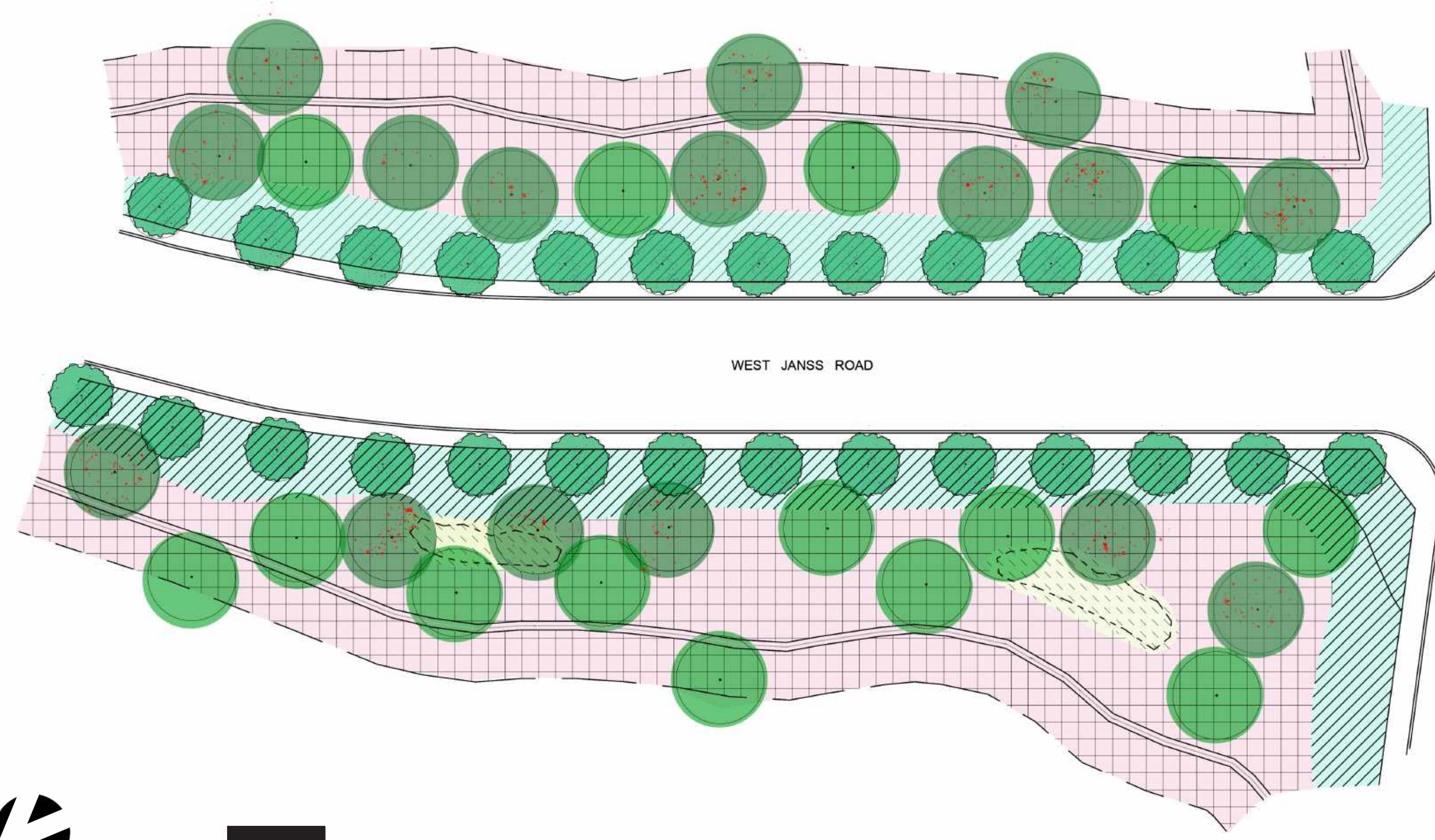


SITE ANALYSIS

- DESIREABLE VIEWS
- VEHICULAR CIRCULATION
- PEDESTRIAN CIRCULATION
- PREVAILING WIND
- SANTA ANA WIND
- DRAINAGE DIRECTION
- DISTURBED AREA
- EXISTING SAGE SCRUB
- SUMMER SUN PATH
- WINTER SUN PATH



TREE & GROUND COVER PLANTING PLAN



PLANT PALETTE

SHRUBS:

<i>Acemison glaber</i> Deerweed 3 ft. H x 3 ft. W WUCOLS: VERY LOW	<i>Artemisia californica</i> California sagebrush 5 ft. H x 5 ft. W WUCOLS: VERY LOW	<i>Astragalus trichopodus</i> Santa Barbara milkvetch 3 ft. H x 4 ft. W WUCOLS: VERY LOW
<i>Cylindropuntia proflera</i> Coast cholla 8 ft. H x 4 ft. W WUCOLS: VERY LOW	<i>Dudleya pulverulenta</i> Chalk dudleya 1 ft. H x 1 ft. W WUCOLS: VERY LOW	<i>Encelia californica</i> California brittlebush 3 ft. H x 3 ft. W WUCOLS: VERY LOW
<i>Eriogonum crocatum</i> Conejo buckwheat 2 ft. H x 3 ft. W WUCOLS: VERY LOW	<i>Eriogonum fasciculatum</i> California buckwheat 3 ft. H x 6 ft. W WUCOLS: VERY LOW	<i>Malosma laurina</i> Laurel sumac 15 ft. H x 15 ft. W WUCOLS: VERY LOW
<i>Opuntia littoralis</i> Coastal prickly pear 3 ft. H x 5 ft. W WUCOLS: VERY LOW	<i>Peritoma arborea</i> Bladder pod 6 ft. H x 6 ft. W WUCOLS: VERY LOW	<i>Rhus integrifolia</i> Lemonade berry 15 ft. H x 20 ft. W WUCOLS: VERY LOW
<i>Rosa californica</i> California wild rose 8 ft. H x 10 ft. W WUCOLS: LOW	<i>Salvia mellifera</i> Black sage 4 ft. H x 10 ft. W WUCOLS: VERY LOW	

TREES:

<i>Chilopsis linearis 'Burgundy'</i> Desert willow 20 ft. H x 15 ft. W WUCOLS: VERY LOW	<i>Heteromeles arbutifolia</i> Toyon 20 ft. H x 15 ft. W WUCOLS: VERY LOW	<i>Juglans californica</i> California black walnut 20 ft. H x 30 ft. W WUCOLS: LOW
--	--	---

HYDROSEED MIX 1: STREET LEVEL

<i>Achillea millefolium</i> (60%) Common yarrow 1 ft. H x 1 ft. W WUCOLS: LOW	<i>Lupinus truncatus</i> (40%) Collared annual lupine 1.5 ft. H x 1 ft. W WUCOLS: LOW
--	--

HYDROSEED MIX 2: UPPER SLOPE

<i>Dichelostemma capitatum</i> (10%) Blue dicks 2 ft. H x 2 ft. W WUCOLS: LOW	<i>Diplacus aurantiacus</i> (50%) Orange monkeyflower 3 ft. H x 3 ft. W WUCOLS: VERY LOW	<i>Elymus condensatus</i> (40%) Giant wild rye 5 ft. H x 5 ft. W WUCOLS: LOW
--	---	---

HYDROSEED MIX 3: ROCK OUTCROPS

<i>Dudleya pulverulenta</i> (30%) Chalk dudleya 1 ft. H x 1 ft. W WUCOLS: VERY LOW	<i>Epilobium canum</i> (70%) California Fuchsia 1 ft. H x 3 ft. W WUCOLS: VERY LOW
---	---