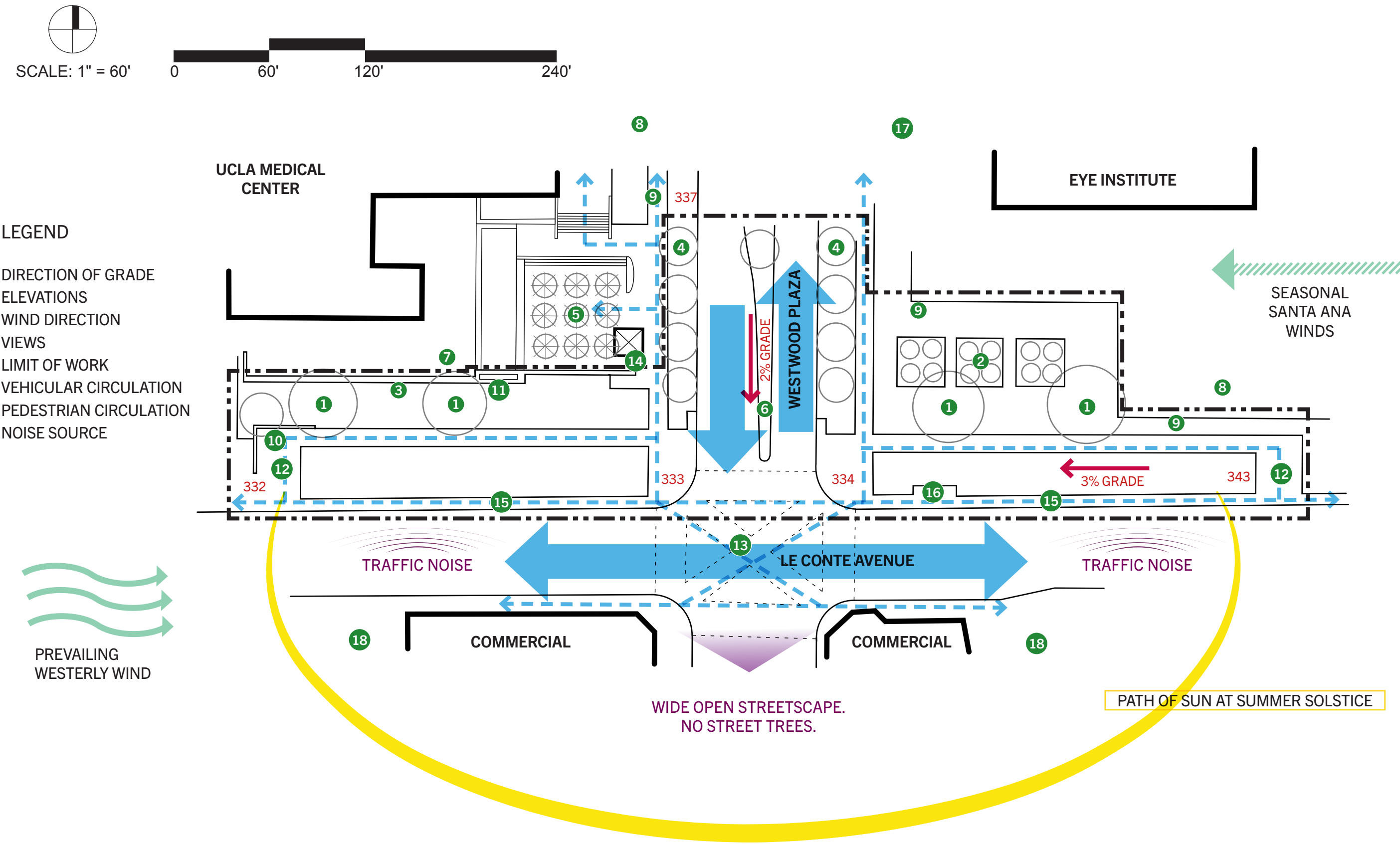


PLANTING DESIGN FOR UCLA'S SOUTH ENTRANCE

SITE ADDRESS: UCLA CAMPUS, WESTWOOD BOULEVARD AND LE CONTE AVENUE, LOS ANGELES, CA 90095
 SITE DESCRIPTION: SOUTH ENTRANCE TO UCLA. FOUR LANE URBAN INTERSECTION.
 CONTEXT: UCLA MEDICAL CENTER AND CAMPUS AND WESTWOOD COMMERCIAL DISTRICT.
 SOIL: SANDY LOAM
 SUNSET ZONE: CUSP OF 24 AND 22

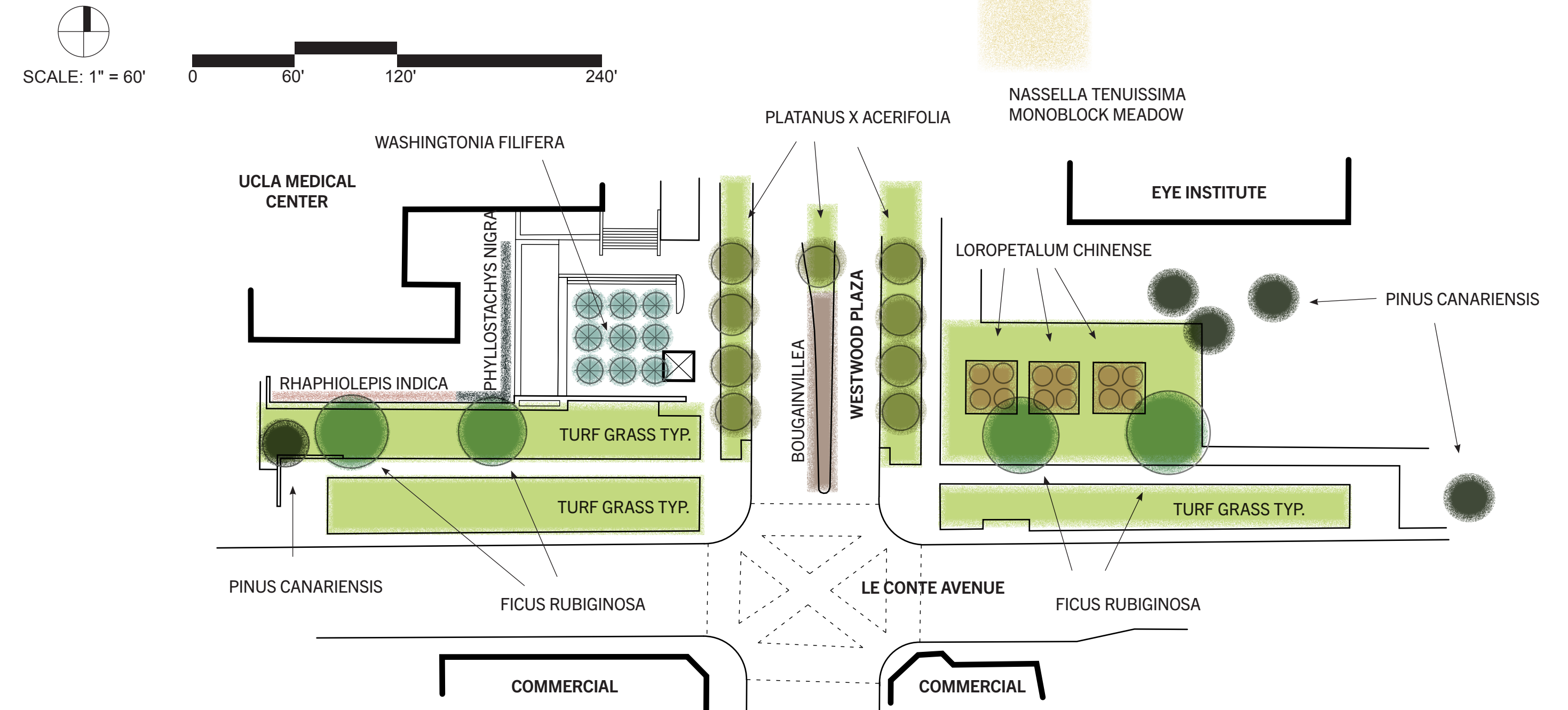
GUS KOVEN
 UCLA EXT LANDSCAPE ARCHITECTURE LD5: STEPHEN DAVIS
 PROJECT #3
 JUNE 14, 2020

SITE ANALYSIS

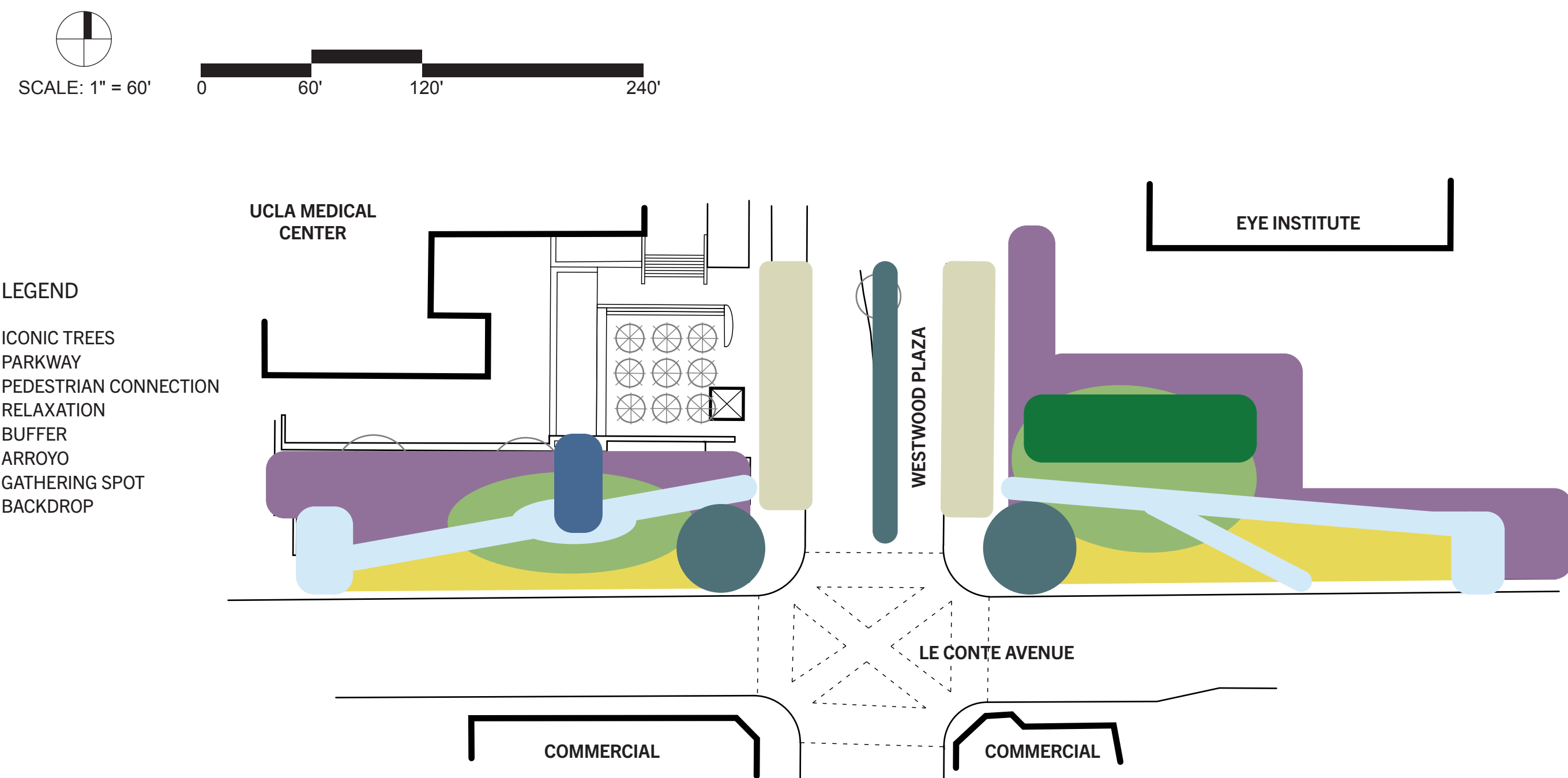


- EXISTING FICUS RUBIGINOSA TO BE REMOVED
- 30' SQUARE BRICK PLANTERS
- 4' HIGH BRICK WALL
- WESTWOOD PLAZA PARKWAY PLANTED WITH PLATANUS X ACERIFOLIA AND TURF GRASS
- COURTYARD PLANTED WITH WASHINGTONIA FILIFERA
- WESTWOOD PLAZA MEDIAN PLANTED WITH BOUGAINVILLEA
- HEDGING BEHIND WALL WITH PHYLLOSTACHYS NIGRA AND RHAPHIOLEPIS
- UCLA MEDICAL CENTER ENTRANCE
- 6' HIGH BRICK WALLS
- UCLA SIGN
- FOUNTAIN JUTS OUT THROUGH HOLE IN WALL
- SMALL OPEN PLAZAS
- PEDESTRIAN SCRAMBLE CROSSWALK
- BRICK BODEGA
- CITY SIDEWALK DIRECTLY ADJACENT TO STREET CURB - NO PARKWAY
- E-SCOOTER PARKING
- EYE INSTITUTE ENTRANCE PLANTED WITH NASSELLA TENUISSIMA
- PUBLIC PARKING

EXISTING PLANT ANALYSIS



AREA USE DIAGRAM



DESIGN NARRATIVE

The existing planting around UCLA's south entrance primarily consists of long swaths of lawn with four mature *Ficus rubiginosa* trees along Le Conte Avenue and an alleé of *Platanus x hispanica* trees along Westwood Plaza. There are nine mature *Washingtonia filifera* trees set behind a wall in the UCLA Medical Center courtyard which are visible from the street, some Boston ivy growing on the brick walls along Westwood Plaza, and *Loropetalum* planted in three large brick planters. All in all, for such a large space with such significance, there's not much here.

The proposed planting design aims to create a strong entry statement for one of the great universities of the west coast with large scale trees and sweeping meadows. It also focuses on prioritizing the pedestrian experience with movement into and out of the campus and creating spaces for relaxation and gathering. The plants are a blend of Mediterranean and California natives, reflecting the varied architectural styles on campus and are all low water use with an eye on sustainability.

From a planting perspective, there's a lot of inspiration to draw from in UCLA's history. There's the former arroyo that flowed down from the hills through campus, the 7-acre

botanical garden filled with subtropical plants, the (now removed) eucalyptus trees donated by the Daughters of the American Revolution, the remains of coastal scrub in the northwest corner of campus, local denizens like redwoods, oaks, and sycamores and a veritable forest of exotic trees peppered throughout campus—it's a classic Los Angelean melting pot.

The proposed planting design stays true to this Southern California mash-up, taking advantage of the sunny south-facing exposure and the breezes along the east-west axis to evoke an idealized version of a California meadow of *Salvias* and golden grasses with tall oaks and conifers towering overhead.

Quercus agrifolia are the primary statement, sitting astride the entrance as landmarks—one day they'll possibly form an arch over all four lanes of Westwood Plaza. On the ground plane, paths curve through tall grasses planted in drifts interspersed with *Eschscholzia californica*, *Verbena*, *Echium candicans*, *Artemisia*s, native *Salvias*, and spires of *Trichostemma lanatum*—a breezy blue and gold meadow.

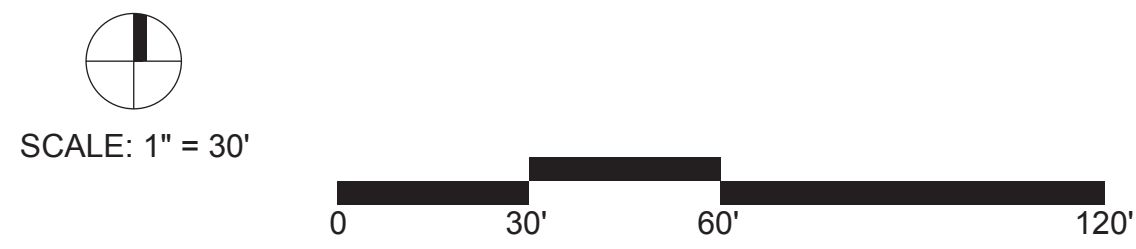
Up above are California riparian trees *Platanus racemosa* and *Umbellularia californica*. *Oleo*

europa, symbols of peace and friendship repose in sitting areas and gathering spots reflecting the school's Romanesque revivalist roots. *Cedrus deodara* act as a backdrop along with small groves of *Lyonothamnus floribundus* ssp. *Asplenifolius*.

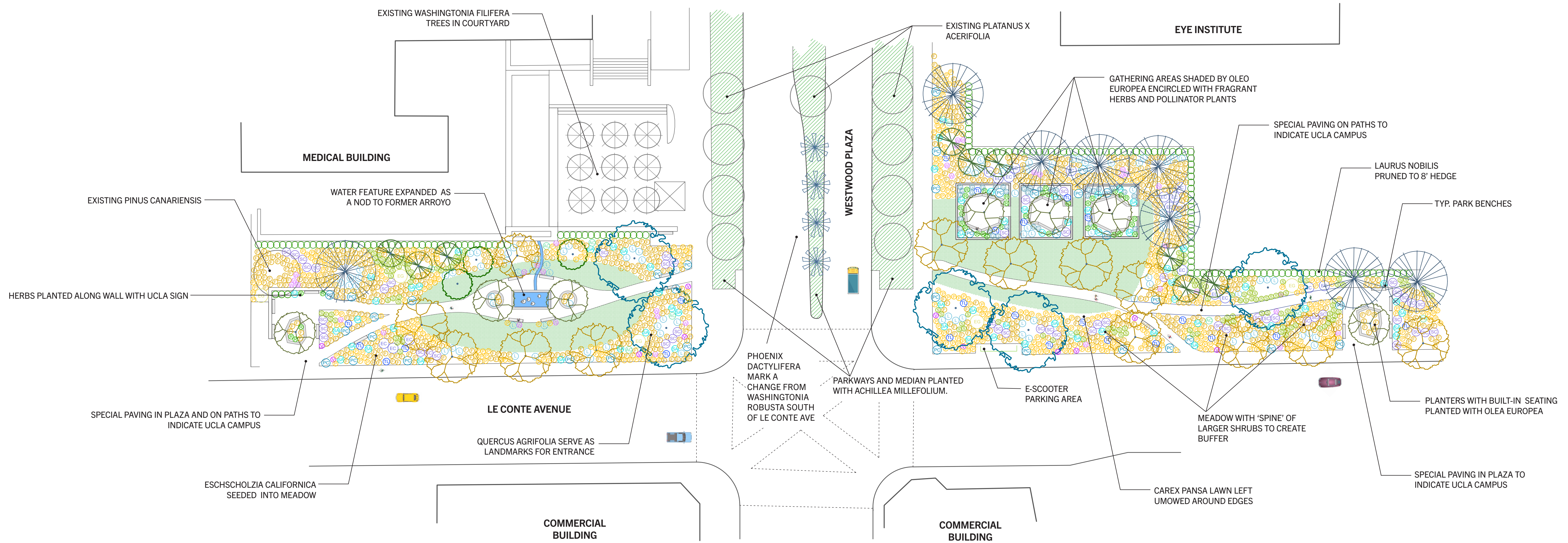
Looking to a more sustainable and less thirsty future, the lawn is *Carex spissa*, mowed neatly to its edge where it's left to blend in with the meadow surrounding it. *Phoenix dactylifera* and *achillea millifolium* on the median strip is a new take on the traditional southern California idea of palms and lawn.

The fountain has been pulled out into the space as a nod to the former arroyo, and the three large brick planters have been transformed into gathering spots filled with fragrant herbs and pollinator plants.

Taken together: tall trees and meadow grasses swaying in the breeze, water, and herb gardens, the effect is meant to be a palpable transition from the hustle and bustle of commercial Westwood to a more enduring and permanent sense of place.



PLANTING CONCEPT DESIGN



PLANT PALETTE

| | | | | | | | | | | | | |
|---|---|---|---|--|---|---|---|--|---|---|--|---|
| | | | | | | | | | | | | |
| Quercus agrifolia coast live oak | Cedrus deodara deodar cedar | Platanus racemosa western sycamore | Olea europaea 'Swan Hill' Swan Hill Fruitless Olive | Umbellularia californica California bay, California laurel | Laurus nobilis sweet bay, bay laurel | Phoenix dactylifera medjool date palm | Lyonothamnus floribundus subsp. asplenifolius Catalina ironwood | Eriogonum giganteum St. Catherine's lace | Echium candicans pride of Madeira | Artemisia x 'Powis Castle' wormwood | Artemisia californica California sagebrush | Trichostema lanatum woolly blue curls |
| WUCOLS PF: VL, SWR Height: 20-60' Spread: 20-60' | WUCOLS PF: L Height: 40-60' Spread: 20-30' | WUCOLS PF: VL, SWR Height: 20-115" Spread: 50' | WUCOLS PF: L, SWR Height: 25-30' Spread: 20-30' | WUCOLS PF: M/L, SWR Height: 25-40' Spread: 15-40' | WUCOLS PF: L Height: 20-30" Spread: 10-20' | WUCOLS PF: L Height: 80-100' Spread: 20-40' | WUCOLS PF: L, SWR Height: 20-30" Spread: 15-20' | WUCOLS PF: L, SWR Height: 4-8' Spread: 6-8' | WUCOLS PF: L, SWR Height: 4-6' Spread: 4-6' | WUCOLS PF: M/L, SWR Height: 2-4' Spread: 4-6' | WUCOLS PF: L, SWR Height: 3-4' Spread: 3-4' | WUCOLS PF: L, SWR Height: 8-12" Spread: 8-12" |
| | | | | | | | | | | | | |
| Salvia clevelandii 'Allen Chickering' Allen Chickering cleveland sage | Salvia apiana white sage | Rosmarinus officinalis 'Roman Beauty' Roman beauty rosemary | Rosa californica California wild rose | Verbena lilacina 'De la Mina' De La Mina verberna | Teucrium chamaedrys wall germander | Leymus condensatus 'Canyon Prince' canyon prince wild rye | Festuca mairei Atlas fescue | Sporobolus airoides alkili sacaton | Pennisetum spathiolatum slender veldt grass | Carex pansa California meadow sedge | Achillea millefolium common yarrow | Eschscholzia californica California poppy |
| WUCOLS PF: VL, SWR Height: 3-5' Spread: 4-6' | WUCOLS PF: L, SWR Height: 4-5' Spread: 4-5' | WUCOLS PF: L, SWR Height: 1-3' Spread: 1-2' | WUCOLS PF: L Height: 4-6' Spread: spreading | WUCOLS PF: L, SWR Height: 2-3' Spread: 3-4' | WUCOLS PF: L, SWR Height: 1-2' Spread: 2-3' | WUCOLS PF: VL, SWR Height: 2-3' Spread: 3-5' | WUCOLS PF: L, SWR Height: 2-3' Spread: 2-3' | WUCOLS PF: L, SWR Height: 3-4' Spread: 2-3' | WUCOLS PF: L, SWR Height: 1-2' Spread: 1-2' | WUCOLS PF: M Height: 8-10" Spread: 12-24" | WUCOLS PF: L Height: 6" Spread: 12" | WUCOLS PF: L Height: 12" Spread: 12" |