

**T**he aim of this project was to create a space that would suit a young family now and as it grows. The needs of the family are typical: some play space for an eight-year old girl and a dog. The parents would like private space for meditation, yoga and reading.

The primary challenges of the site were the second story neighbors on both sides and in front of the property, requiring screening for privacy. Noise was also an issue from the adjacent multi-dwelling property and alley. The site sits adjacent to a cemetery which some may see as a negative, but in a strict sense offered borrowed views of green space if screened to approximately 6'.

A tall and very slender variety of Boxwood was used as screening as it provides a neutral canvas for other plantings and the sideyards of the site required very narrow plantings.

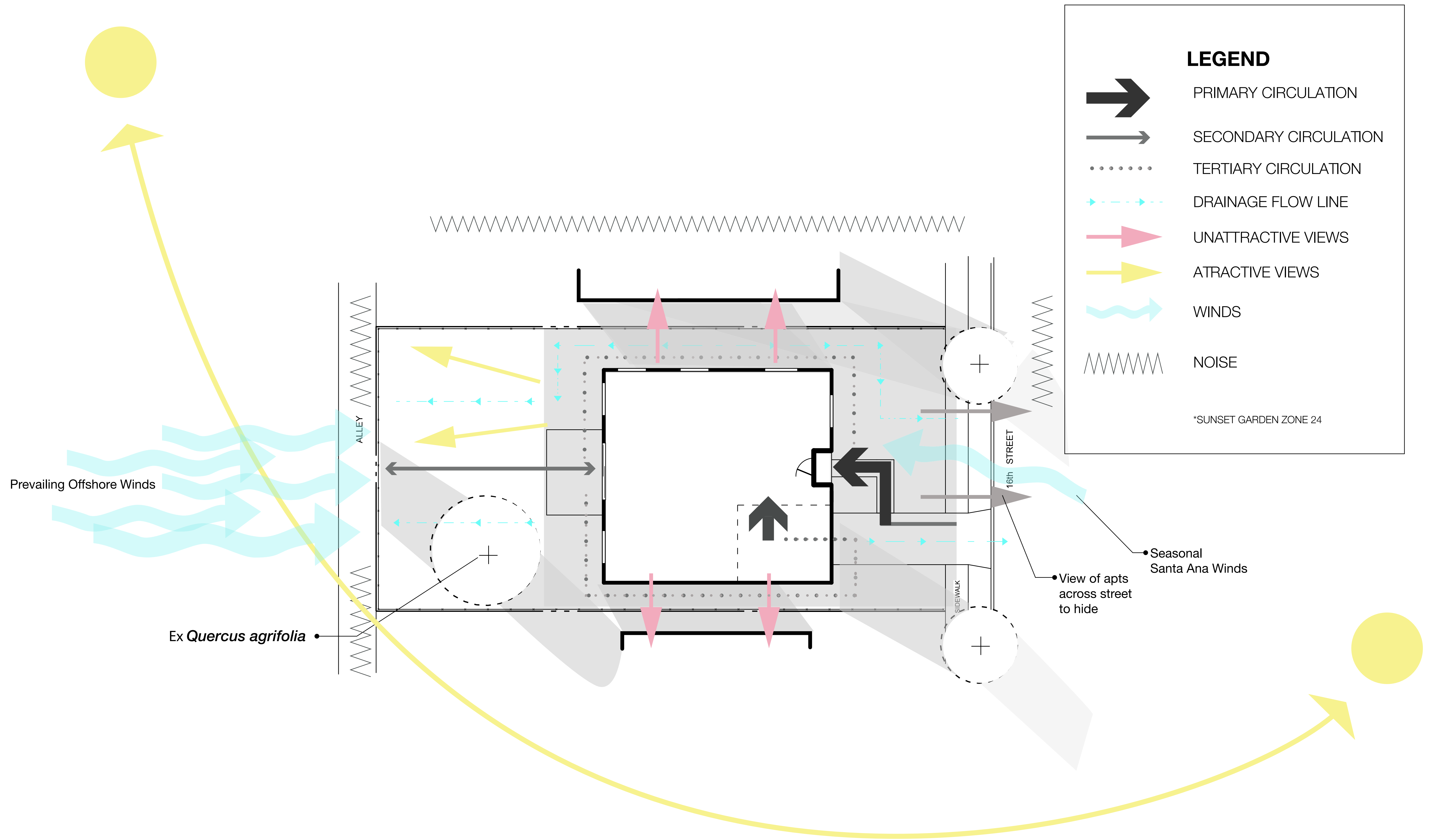
A dry shade garden of Woodwardia fimbriata and Heuchera maxima is present under the existing oak and will look beautiful year-round as well as be good companion plants for the oak.

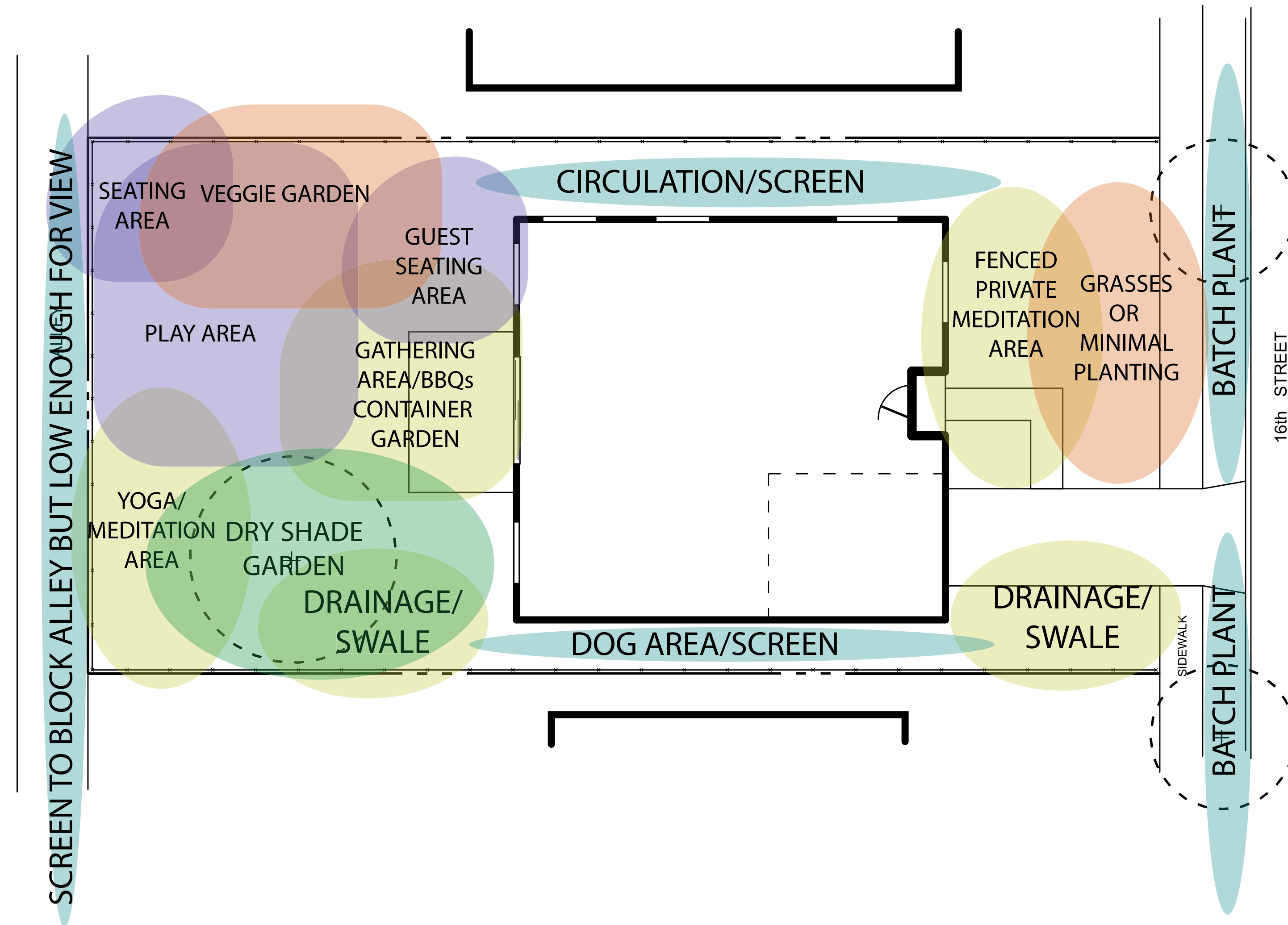
The family's request for meditation and yoga space led me to believe that they see the site as a place of refuge more than activity. This dic-

tated the bulk of my design decisions from form, overall concept to circulation to color and plant palette. I opted for a tonal solution using tones of green and primarily evergreens with little flowering perennials or trees. I chose ornamental grasses, Arctostaphylos and saw the space in a minimalist, modern way that would provide refuge with pockets of privacy but also allow natural elements like a live edge cedar slab bench, cedar tree stumps and a fountain to enter the space. The space is intended to be very calming in both color and plant palette. The concrete pavers are at their highest concentration in areas of higher circulation and gathering and the space between them spreads as the space becomes more private.

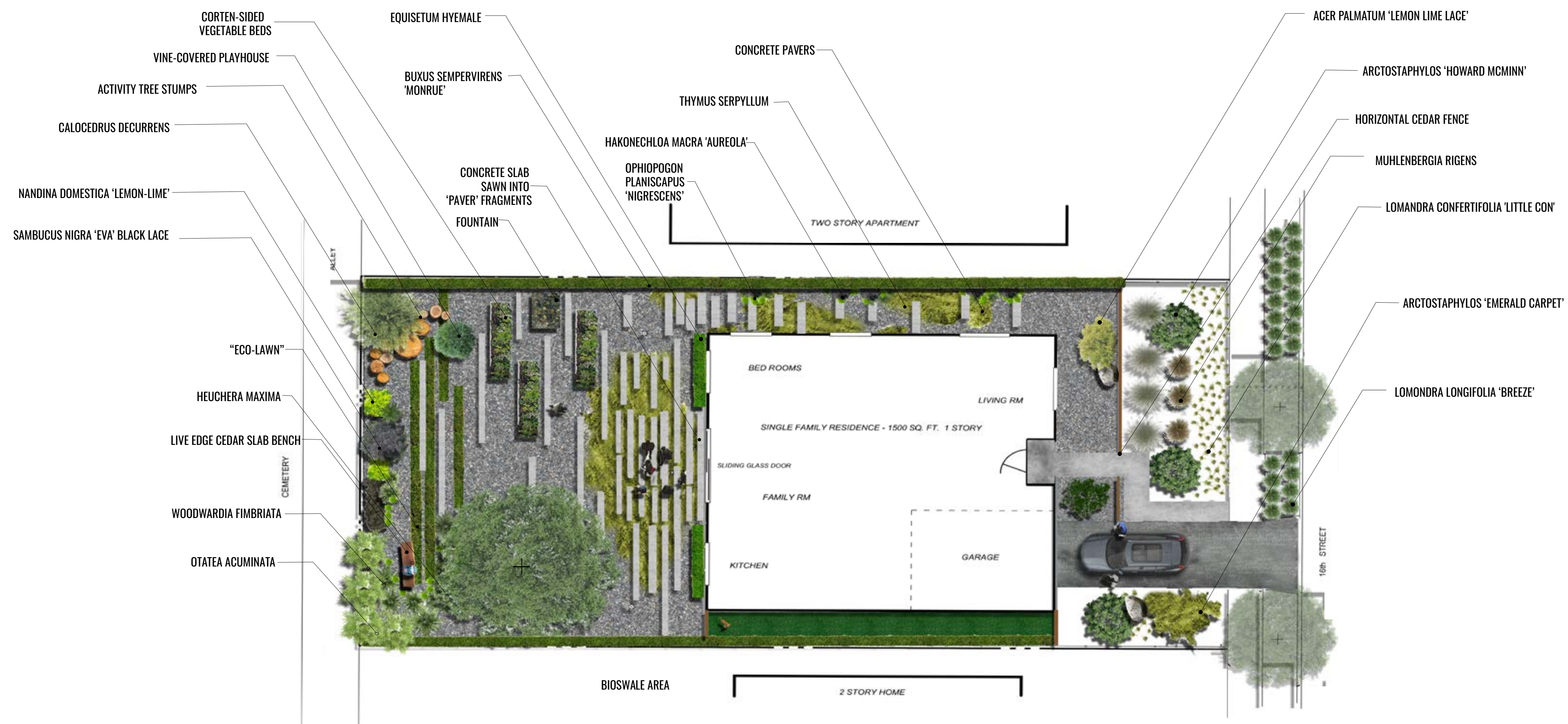
The young girl is provided with a series of cedar trunks at varying heights which acts as a natural jungle gym and obstacle course. They are in keeping with the serenity of the site and provide an area of fun. She is also provided with a vine-covered "tee-pee" playhouse. Children enjoy their own private spaces just as adults do. I was careful not to make the space too young and full of playground equipment. Eight-year olds are exploring the world more than playing on slides. They will also soon outgrow any equipment, leaving a visually incompatible and useless eyesore. The elements for the child work with the concept and can be left in place or easily removed. The daughter also has the three large Corten-sided raised vegetable beds to explore and participate in.

My hope is that this space would provide calm to a young family year-round and grow seamlessly with their needs.













NANDINA DOMESTICA 'LEMON-LIME'  
LEMON-LIME NANDINA  
3-4' H X 3-4' W  
WUCOLS: LOW

NANDINA DOMESTICA 'LEMON-LIME'



LOMANDRA CONFERTIFOLIA 'LITTLE CON'  
SMALL MAT RUSH  
1-2' H & W  
WUCOLS: LOW

LOMANDRA CONFERTIFOLIA 'LITTLE CON'



BUXUS SEMPERVIRENS MONRUE  
GREEN TOWER® BOXWOOD  
9' H X 1-2' W  
WUCOLS: LOW-MEDIUM

BUXUS SEMPERVIRENS MONRUE



SAMBUCUS NIGRA 'EVA' BLACK LACE  
BLACK LACE® ELDER  
10' H X 8' W  
WUCOLS: LOW-MEDIUM

SAMBUCUS NIGRA 'EVA' BLACK LACE



OPHIPOGON PLANISCAPUS 'NIGRESCENS'  
BLACK MONDO GRASS  
<1' H X 1-2' W  
WUCOLS: MEDIUM

OPHIPOGON PLANISCAPUS 'NIGRESCENS'



WOODWARDIA FIMBRIATA  
GIANT CHAIN FERN  
4-5' H X 3' W  
WUCOLS: LOW-MEDIUM

WOODWARDIA FIMBRIATA



LOMONDRA LONGIFOLIA 'BREEZE'  
DWARF MAT RUSH  
2-3' H X 3-4' W  
WUCOLS: LOW

LOMONDRA LONGIFOLIA 'BREEZE'



ACER PALMATUM 'LEMON LIME LACE'  
WEeping GREEN LACELEAF JAPANESE MAPLE  
4' H X 6' W  
WUCOLS: MEDIUM

ACER PALMATUM 'LEMON LIME LACE'



HAKONECHLOA MACRA 'AUREOLA'  
JAPANESE FOREST GRASS  
2' H X 3' W  
WUCOLS: MEDIUM

HAKONECHLOA MACRA 'AUREOLA'



EQUISETUM HYEMALE  
HORSETAIL  
4-6' H X SPREADING  
WUCOLS: MEDIUM

EQUISETUM HYEMALE



ECO-LAWN  
FINE FESCUE MIX  
WUCOLS: LOW - MED

ECO-LAWN



CALOCEDRUS DECURRENS  
INCENSE CEDAR  
70-90' H X 10-15' W  
WUCOLS: LOW

ARCTOSTAPHYLOS 'EMERALD CARPET'  
EMERALD CARPET MANZANITA  
<1' H X 3-5' W  
WUCOLS: LOW



OTATEA ACUMINATA  
CREEPING THYME  
15-20' H X CLUMPING  
WUCOLS: LOW-MEDIUM

OTATEA ACUMINATA



THYMUS SERPYLLUM  
CREEPING THYME  
<1' H X SPREADING  
WUCOLS: LOW

THYMUS SERPYLLUM



HEUCHERA MAXIMA  
ISLAND ALUM ROOT  
1' H X 1-2' W  
WUCOLS: LOW

HEUCHERA MAXIMA



ARCTOSTAPHYLOS 'EMERALD CARPET'



MUHLENBERGIA RIGENS  
DEER GRASS  
4-5' H X 4-6' W  
WUCOLS: LOW

MUHLENBERGIA RIGENS



ARCTOSTAPHYLOS 'HOWARD MCMIN'  
HOWARD MCMINN MANZANITA  
6-10' H X 6-12' W  
WUCOLS: LOW

ARCTOSTAPHYLOS 'HOWARD MCMIN'