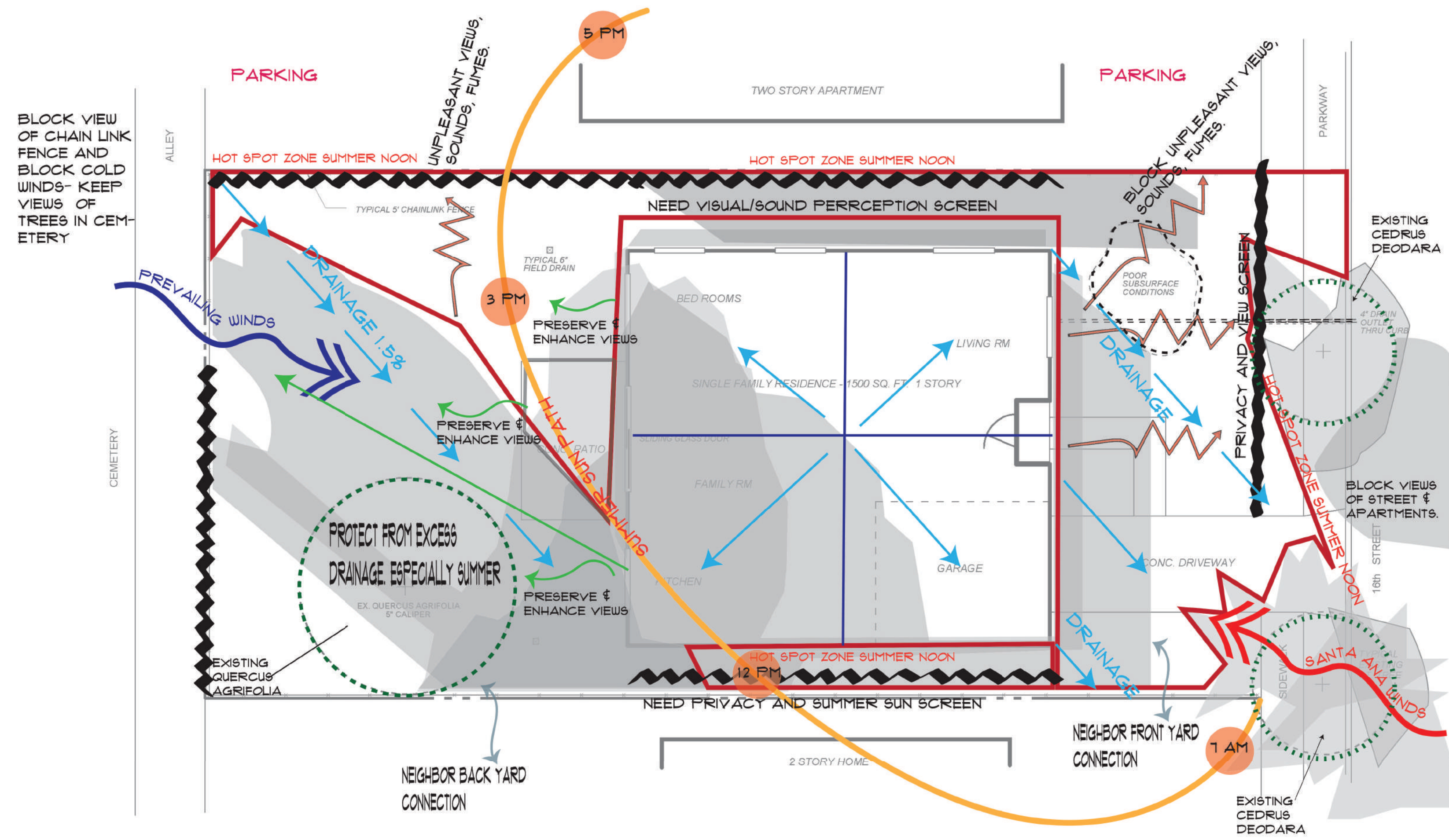
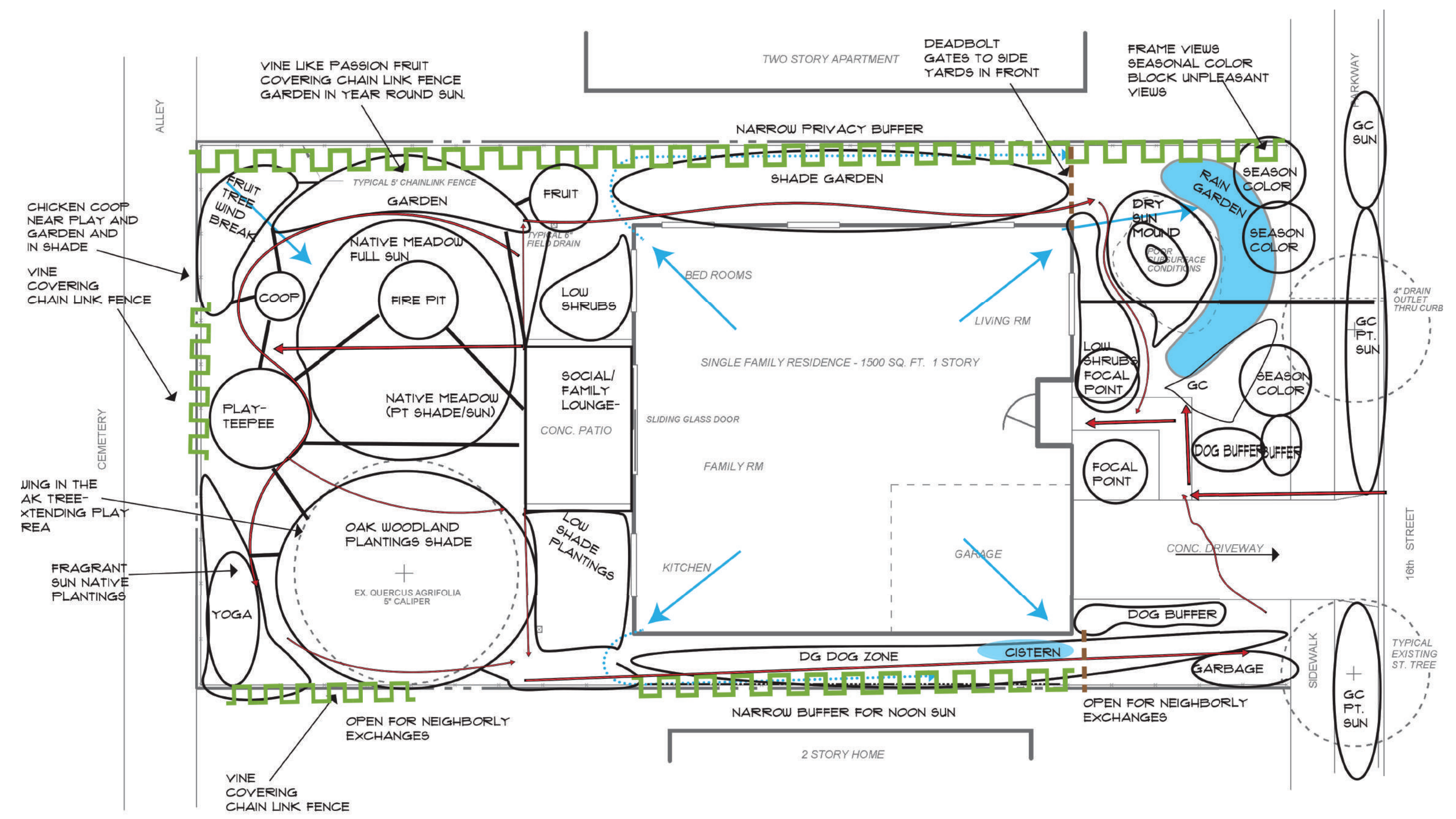


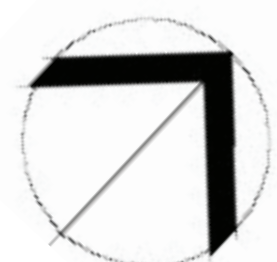
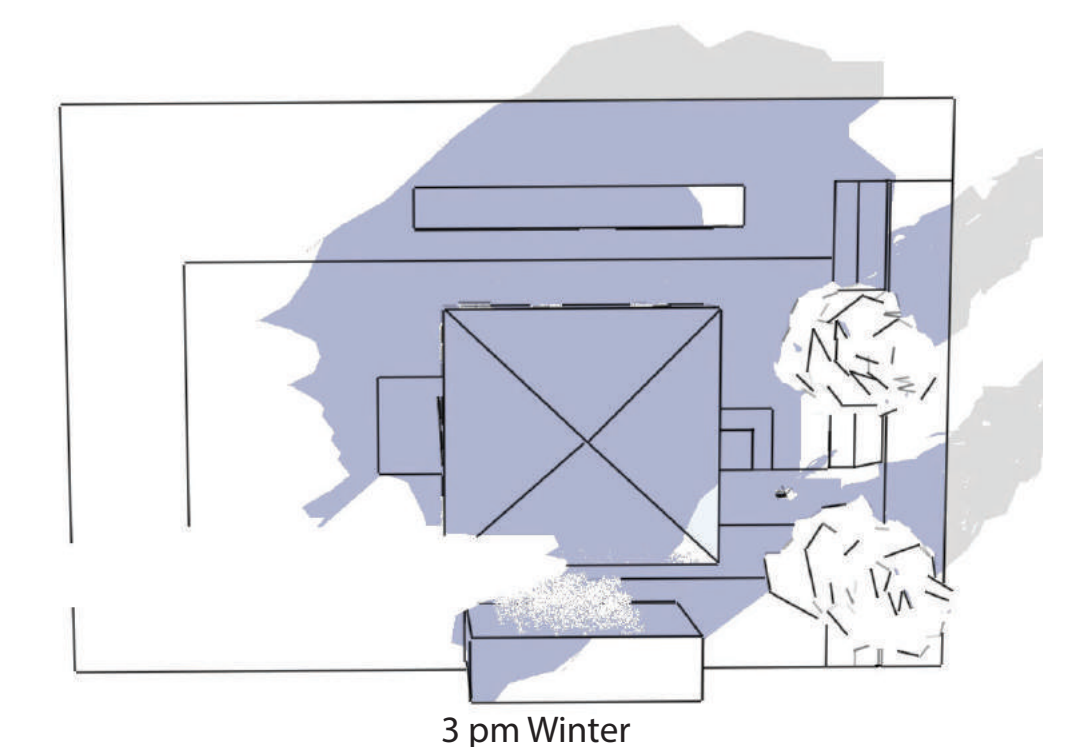
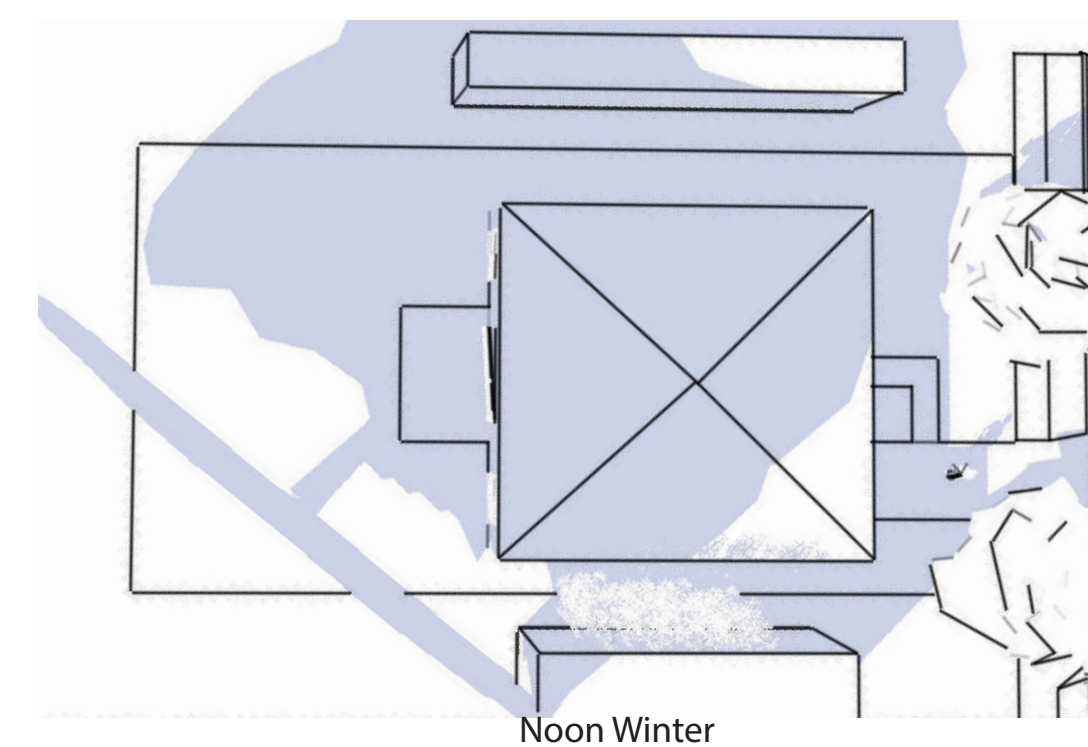
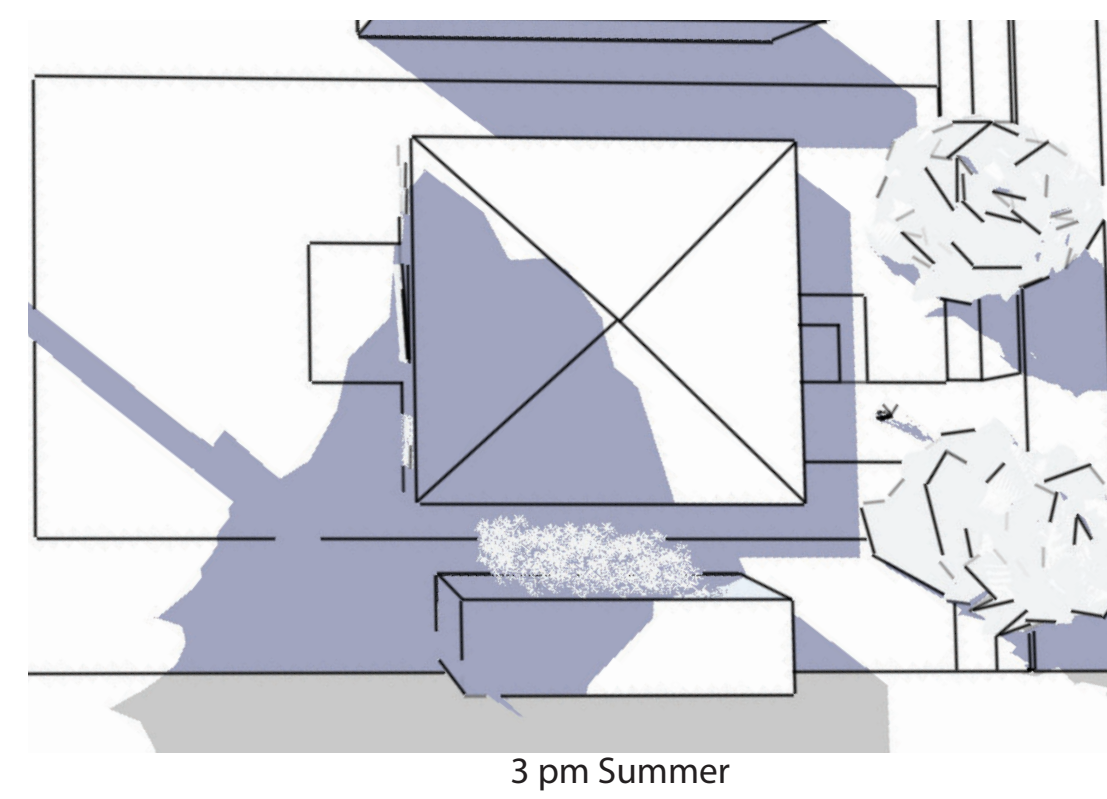
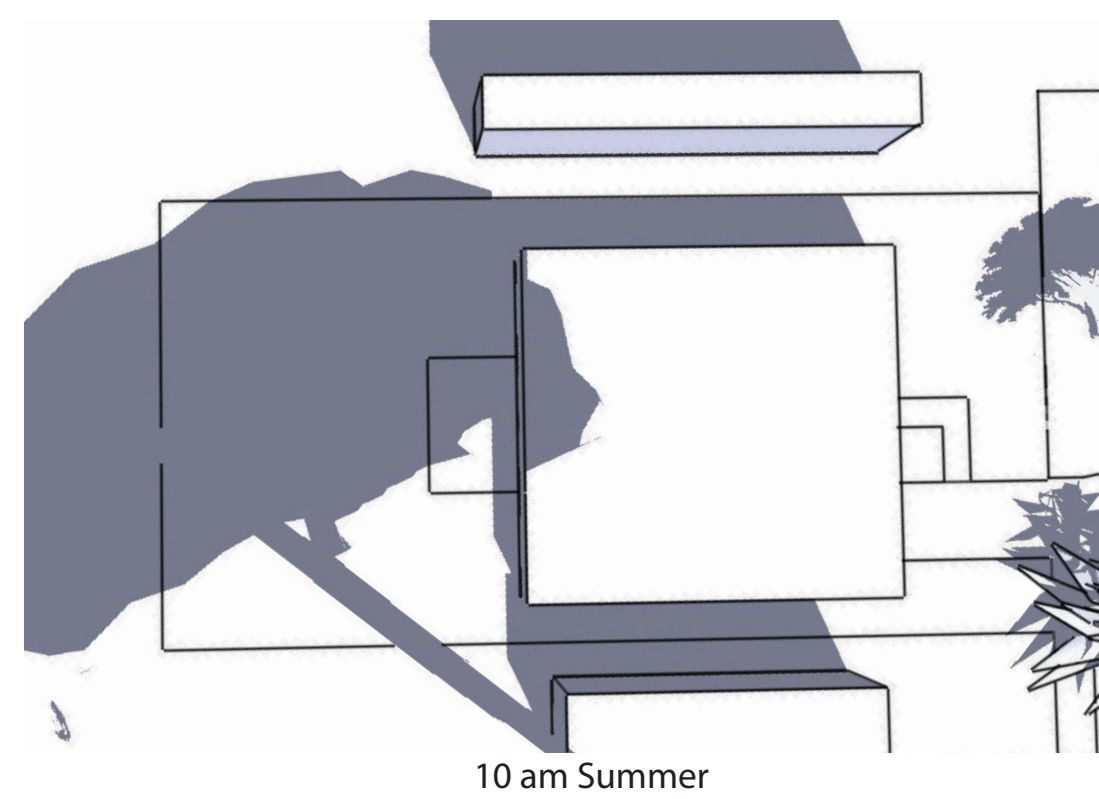
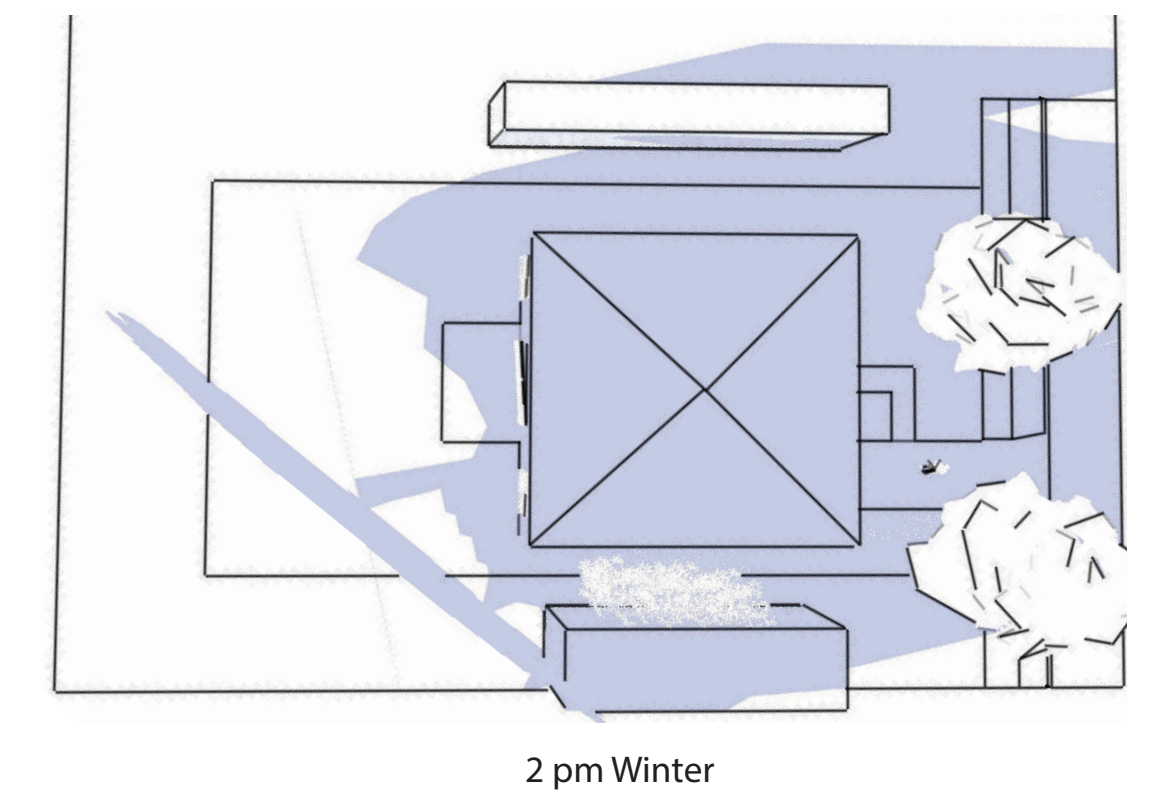
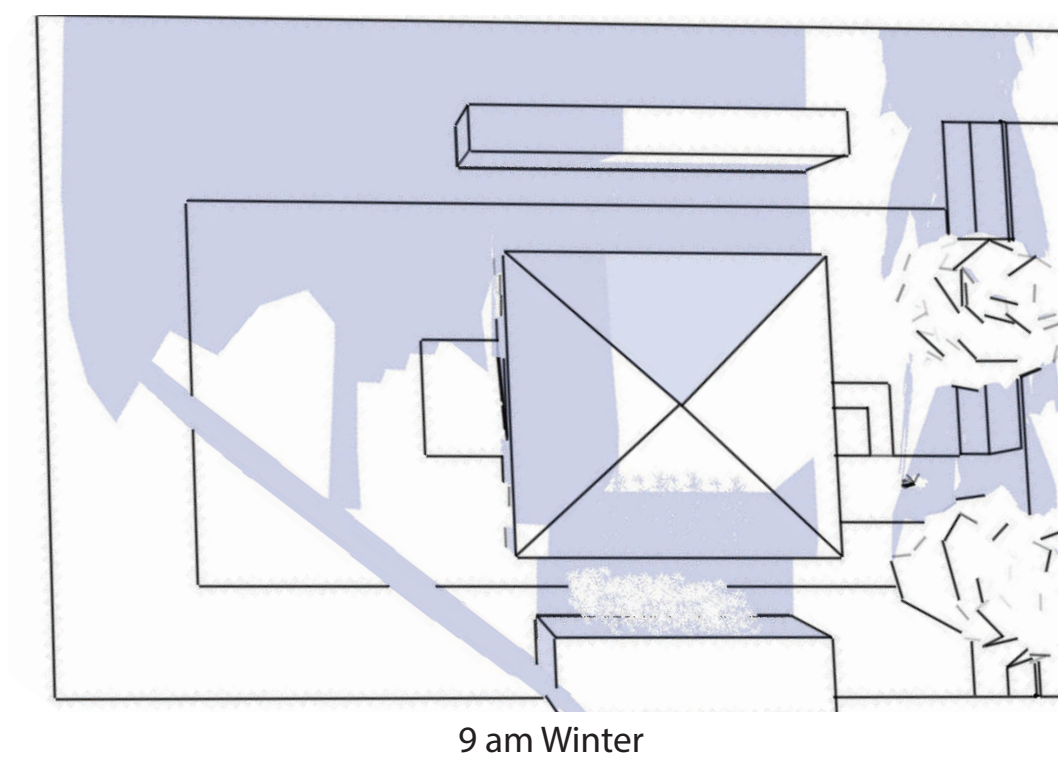
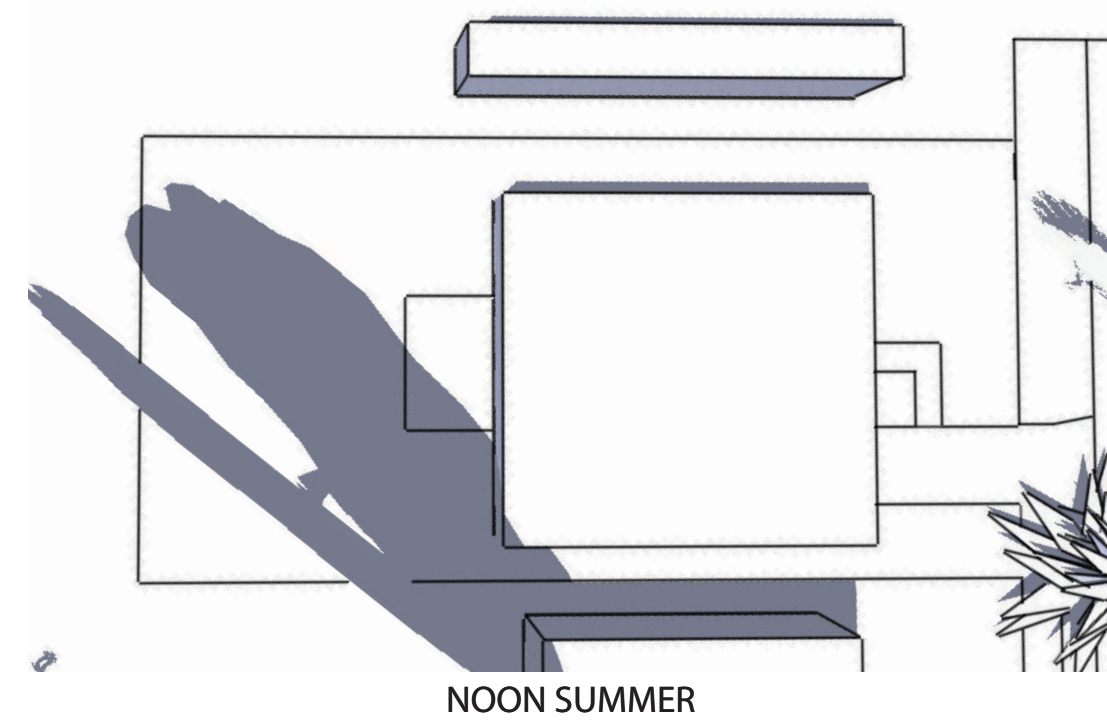
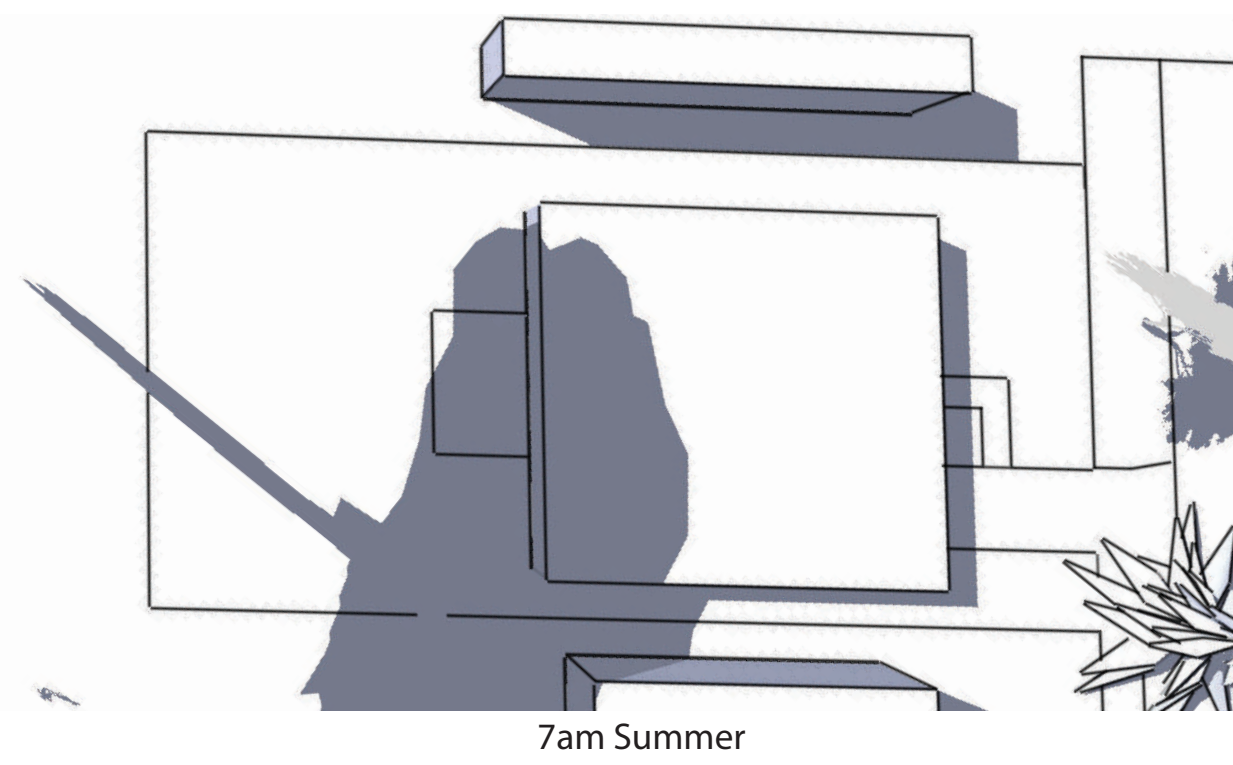
SITE ANALYSIS



AREA USES DIAGRAM



SUN STUDY



SITE ANALYSIS

Santa Monica Residence
1834 16th Street
Zone 24 Sunset/USDA 10b

ALYSSA LEAL MOFFITT

LD5 Planting Design Spring 2020
Instructor: Stephen Davis

DESIGN CONCEPT

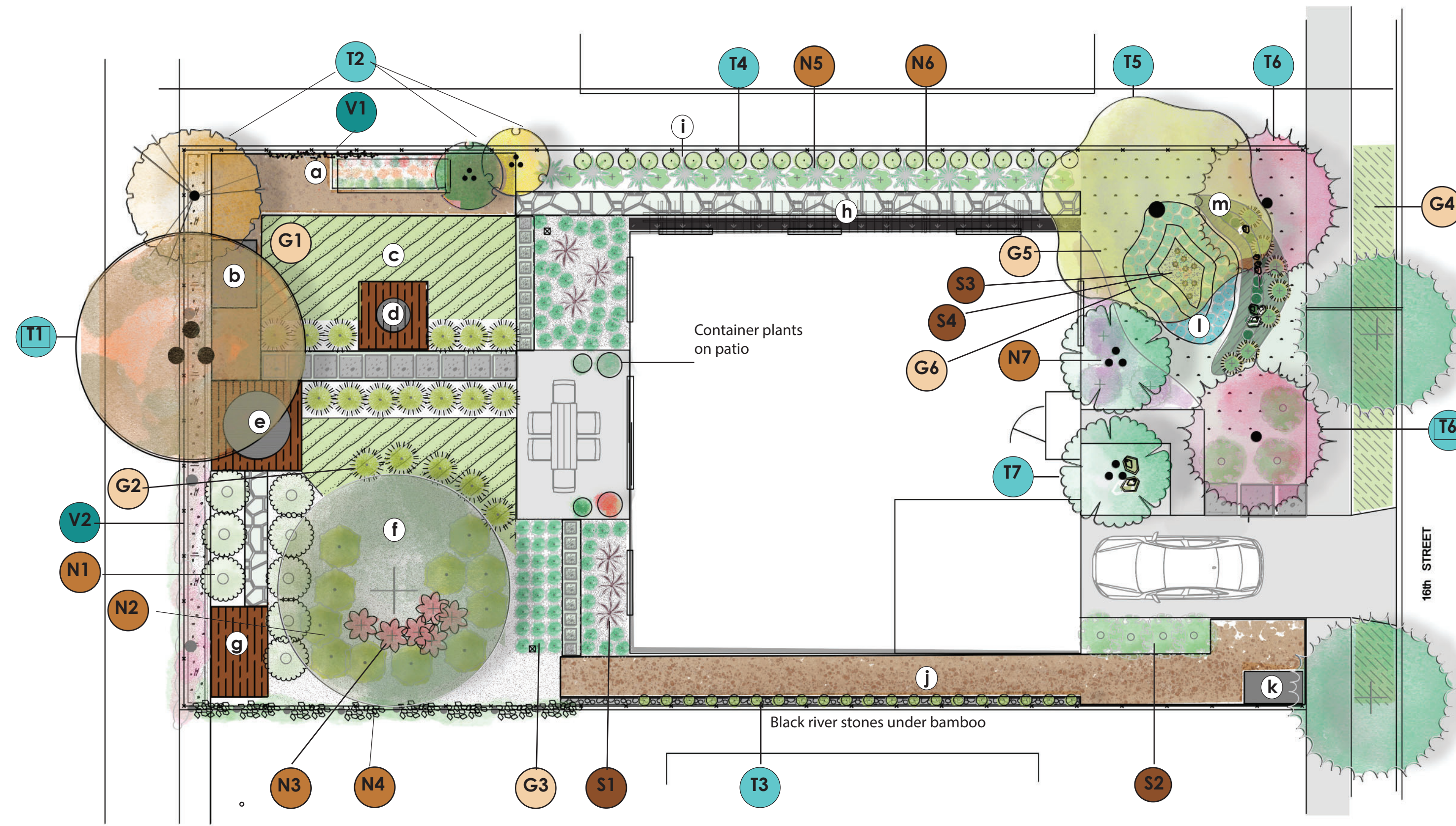
The conceptual design for this Santa Monica residence seeks to create beautiful spaces for resilient and joyous family living. The backyard is divided into smaller public and private spaces and takes advantage of the *Quercus agrifolia*. A swing for the daughter in the oak is nearby a tipi on a deck that borders a native butterfly meadow. The oak also creates a private area toward the back of the property for yoga and meditation amongst fragrant native plants. The oak itself is underplanted with *Salvia spathacea* for fragrance and seasonal delight and the variegated *Ceanothus Diamond Heights* to lighten up the shade. *Poa arachnifera* was selected for its softness underfoot and its tolerance of both sun and shade. After its establishment, native annual and perennials can be seeded to attract butterflies.

A garden area includes a raised bed vegetable garden, chicken coop, an assortment of dwarf fruit trees and a passiflora vine that offers a vibrant green cover for the chain link fence and delicious fruit. The decomposed granite groundcover provides a functional demarcation of the mini farm.

A rectilinear structure created with pathways of bluestone pavers in beds of *Dymondia* gives a sense of order that allows for the looseness of the plants and the unmowed meadow. The meadow size is modified by a drift of *Festuca mairei* to emphasize the pathways and to reduce excessive crossings. Informal paths include smaller pavers or cobblestones in *Dymondia* and mulched areas under the oak.

The front yard blends rectilinear and loose curvy pathways, native with exotics, to create an ecotone between street and home. An area of impacted soil is built up to a small 3' high mound planted with colorful succulents. Barriers are soft and intermittent to allow for borrowing the view of the *Cedrus deodora* street trees, allow passerbys to appreciate the rain garden and to offer seasonal color and visual barriers with the *Cercis occidentalis* and *Cotinus coggygia* 'Golden Spirit'. The side yards are lined in bamboo - a narrow, evergreen barrier that rustles and moves with the wind. The shade garden is a simple pairing of two California ferns. Additional protection from the summer noon sun is provided closer to the house with a trellis. The smaller side of the house has a D.G. groundcover for the dog which extends to the smaller portion of the front yard. Care was taken to avoid any plants that are poisonous. Plants that attract bees where avoided in the yoga and play area. A massing of *Salvia appiana* and a jasmine vine offer a fragrant hide-away.

CONCEPTUAL PLANTING PLAN

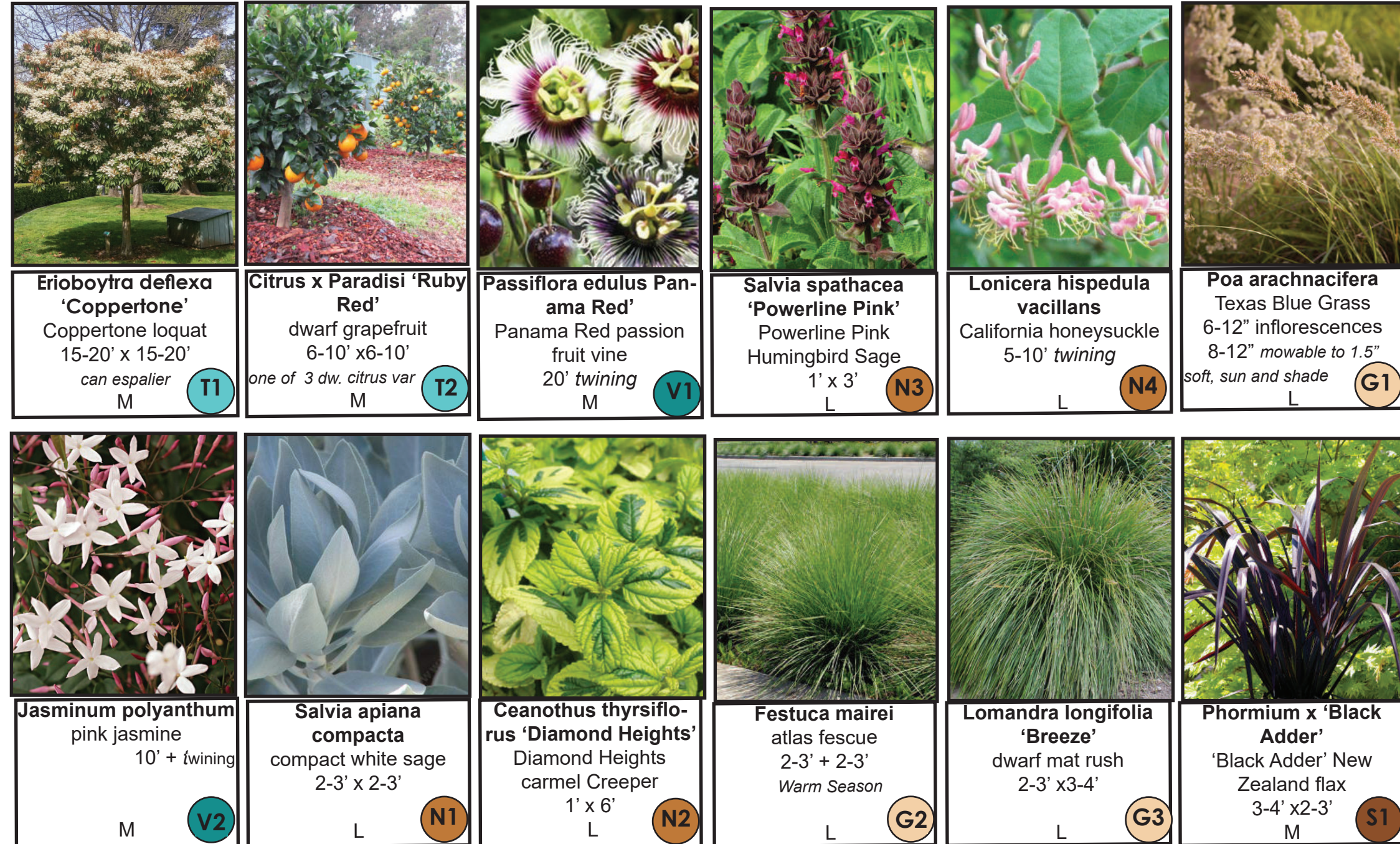


LEGEND

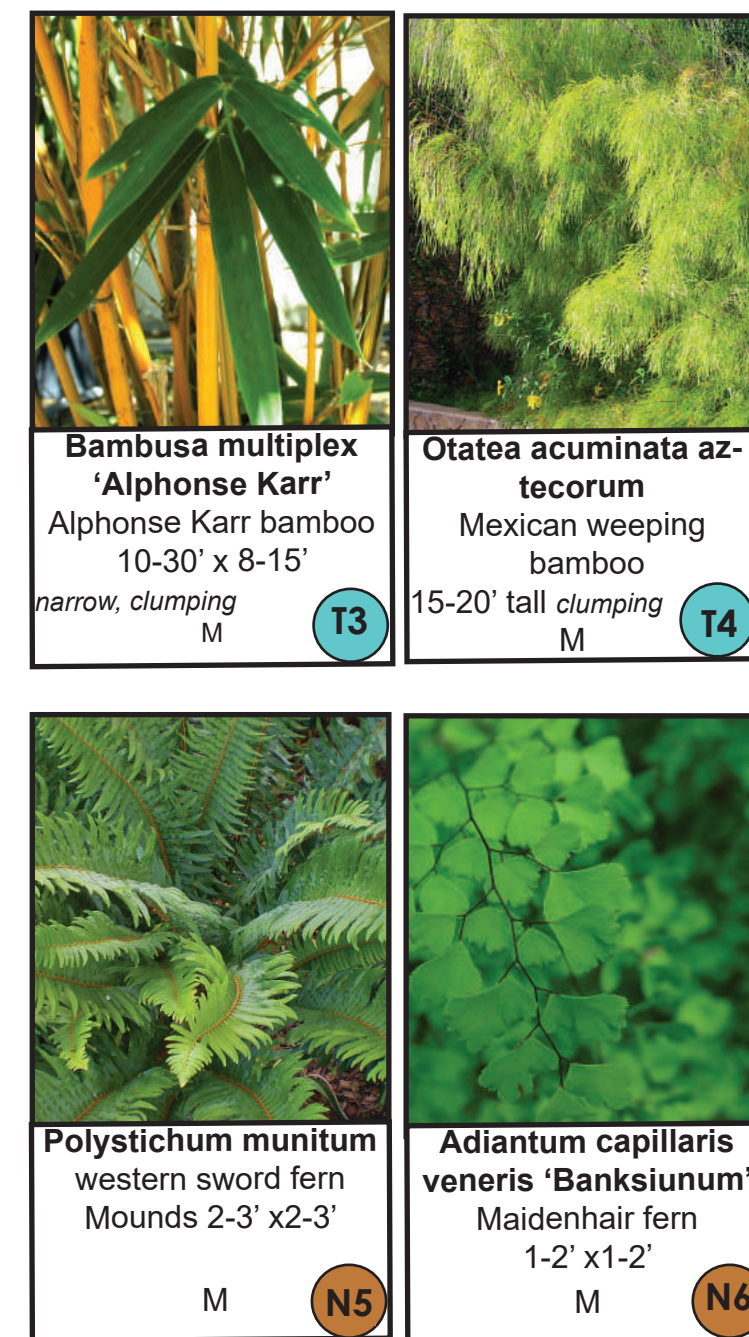
- T1 tree
- S1 shrub
- N1 Native Ca.
- G1 groundcover/grass
- V1 vine
- indicates native plant
- a Garden
- b Coop
- c Meadow
- d fire pit
- e Tipi & deck
- f swing
- g yoga/meditation platform
- h trellis
- i shade garden
- j dg dog zone
- k wood receptacle shed
- l mound approx 3' high
- m rain garden

PLANT PALETTE

BACKYARD



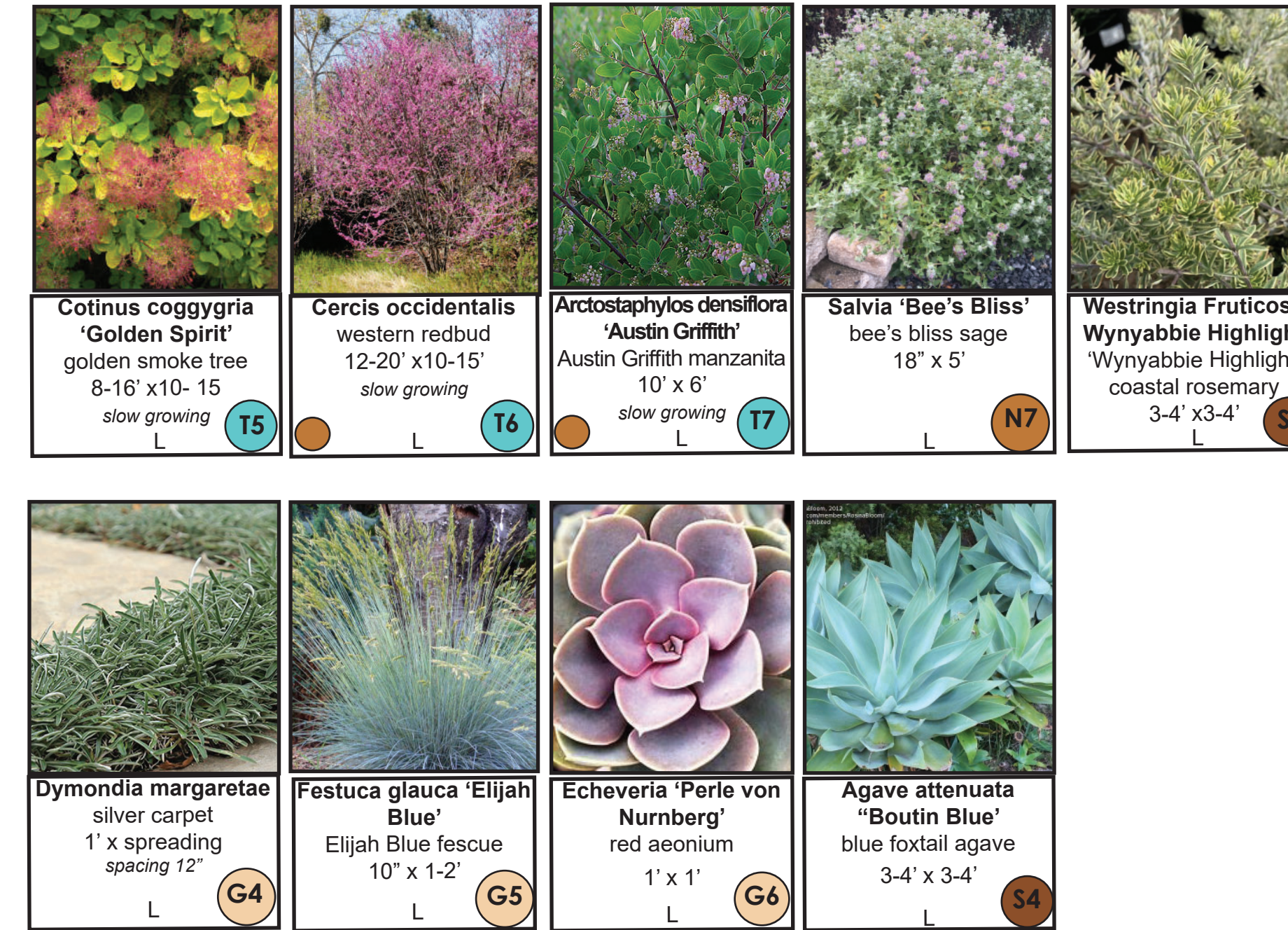
SIDE YARDS



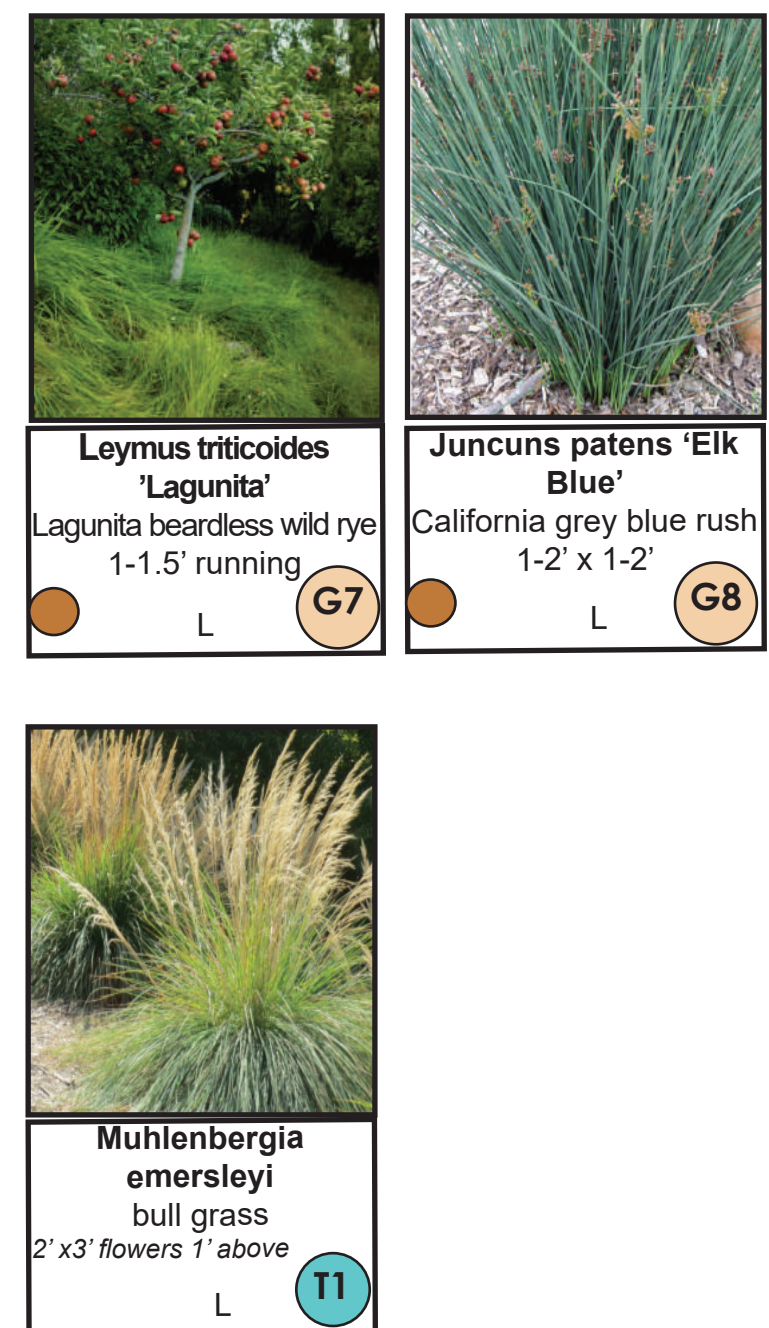
PARKWAY



FRONT YARD



RAIN GARDEN



CONCEPTUAL DESIGN

Santa Monica Residence
1834 16th Street

ALYSSA LEAL MOFFITT

LD5 Planting Design Spring 2020
Instructor: Stephen Davis

