

# *Urban Planning of Thousand Oaks Civic Arts Plaza*

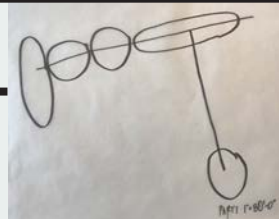


*Central  
Plaza  
Entry  
&  
City Hall  
Entry*

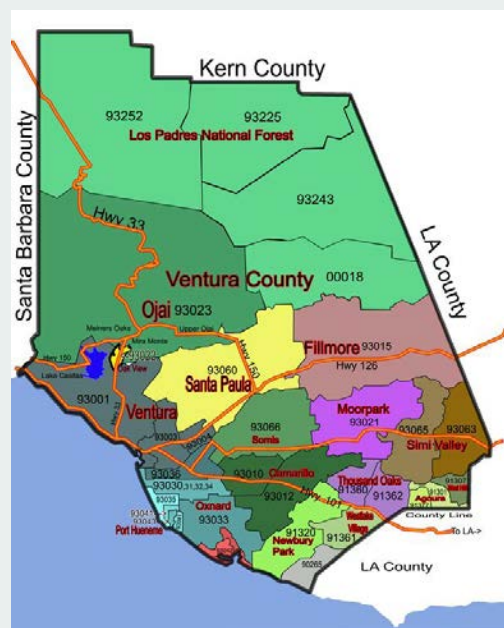
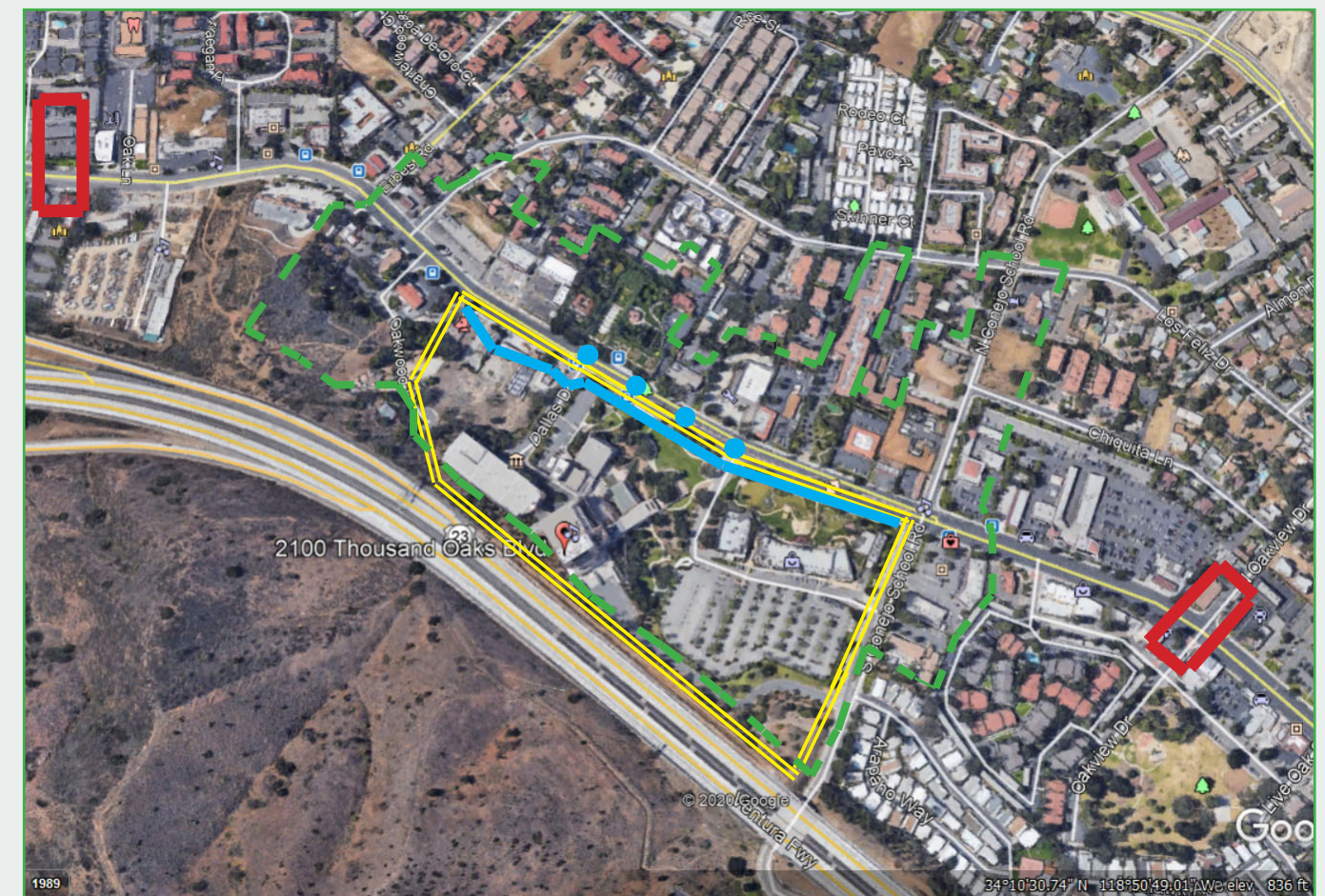
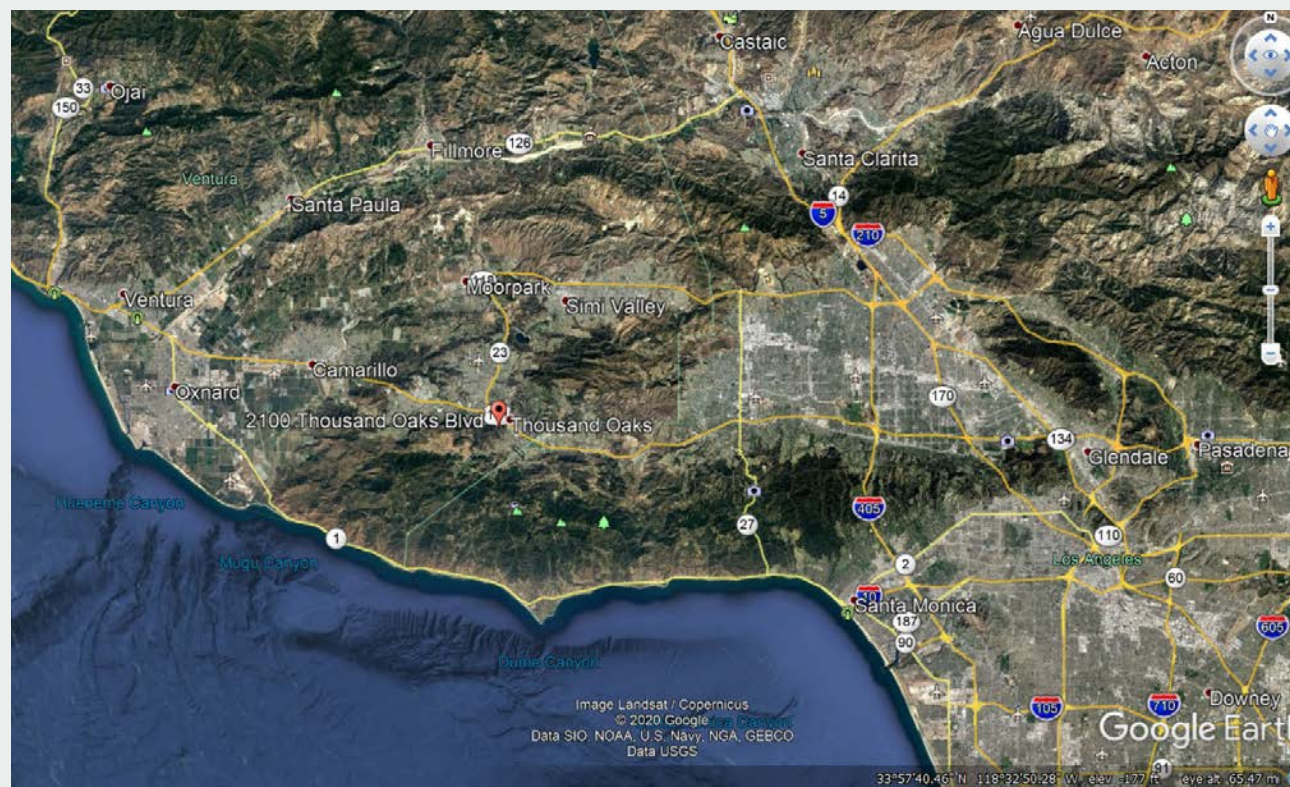
*Thousand Oaks is known for preserving it's 60,000 heritage Oak Trees and the largest Oak trunk is 12' in diameter. The urban re-design of Thousand Oaks Civic Arts Plaza will be incorporating the preservation of most of the existing Oak Trees, with the addition of new tree placement...*

*Landscape Design 3 - Site Design Professor: Francisco Behr  
Spring 2020 Drawn By: Ristin Wilson*





# Urban Planning of Thousand Oaks Civic Arts Plaza



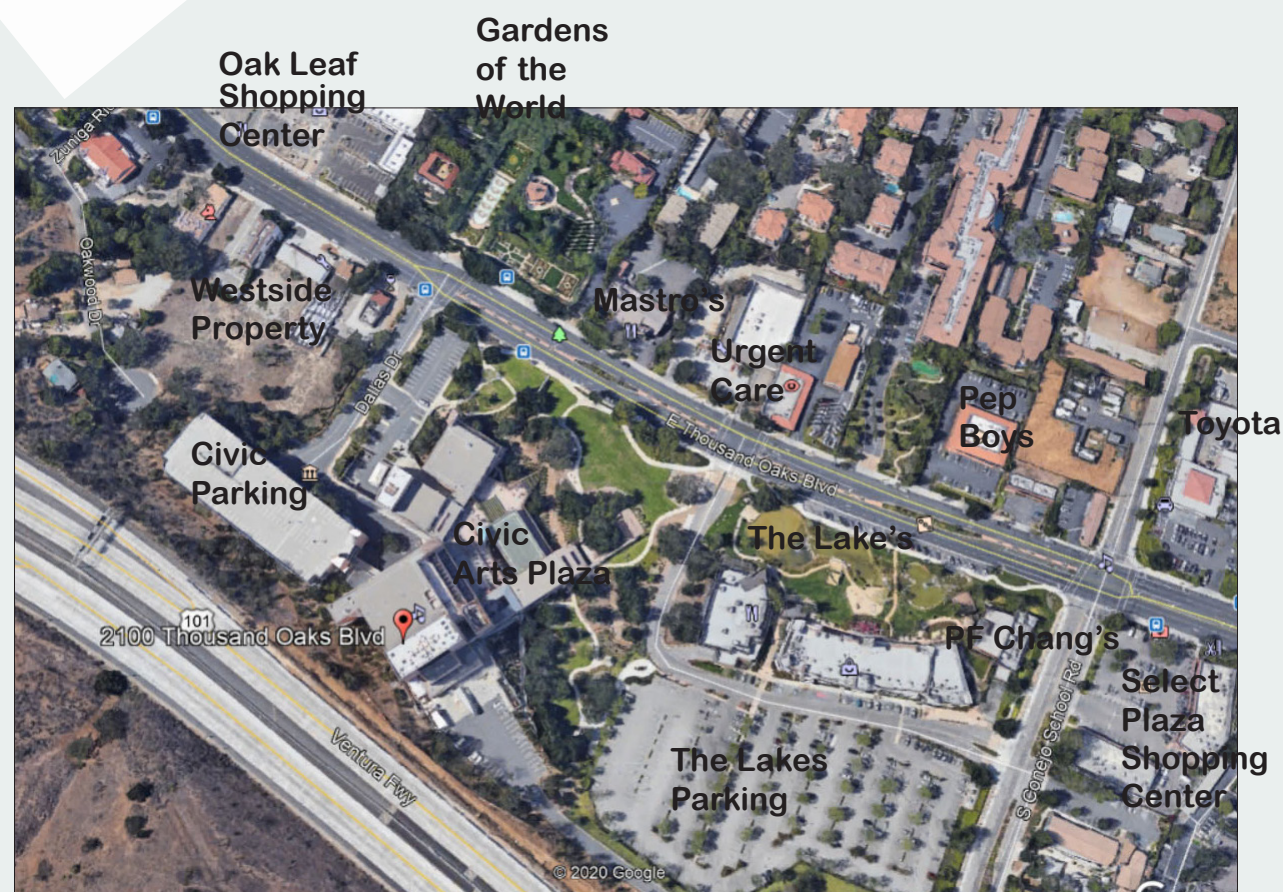
## Vicinity Maps

- Downtown Core Master Plan Boundary
- Civic Arts Plaza Specific Plan Boundary
- Storm Drain Channel Easement Underground
- Thousand Oaks Blvd Specific Plan Boundary
- Paseo of Cultural Activities and Events in Down Town

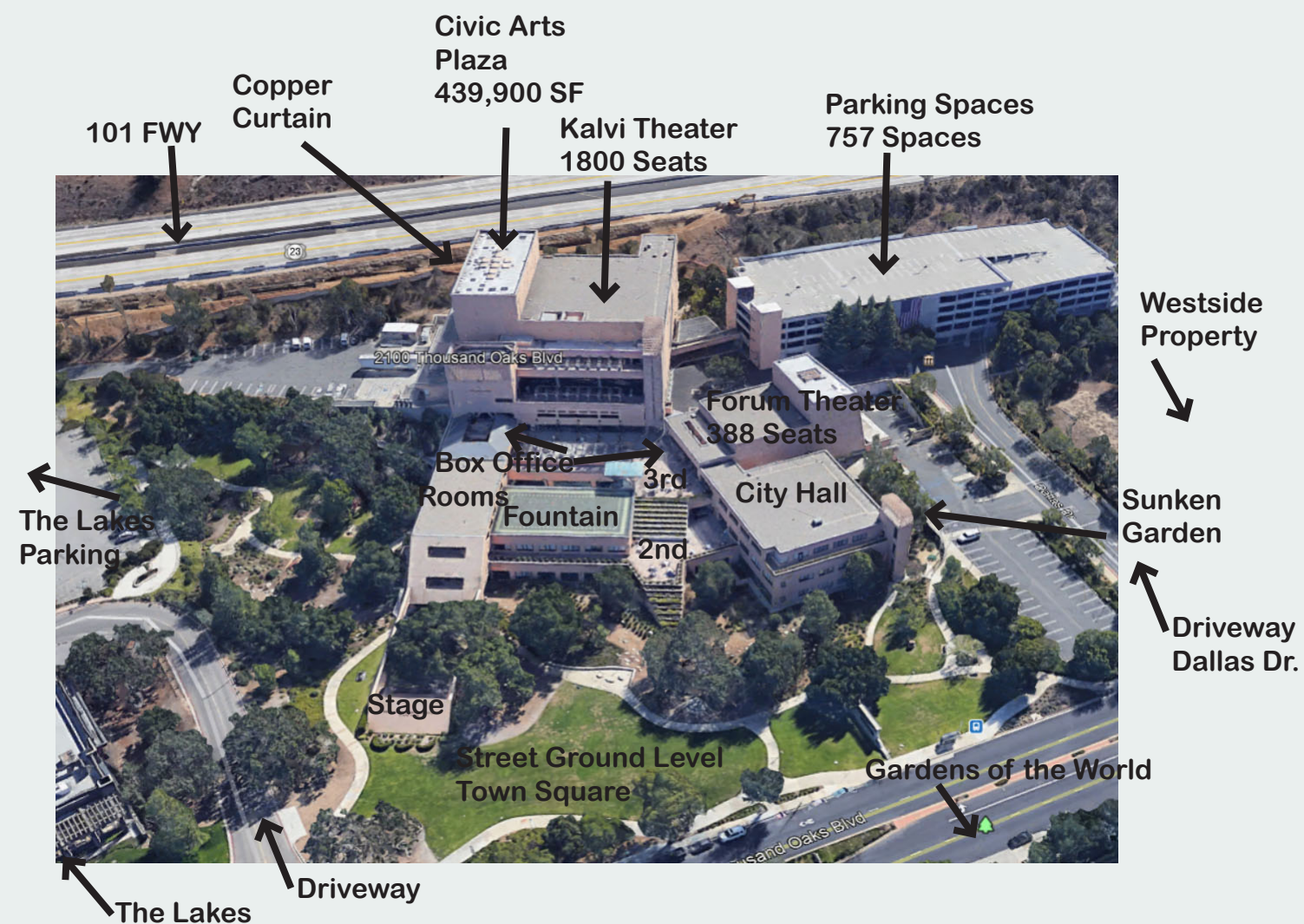
Site Address: 2100 Thousand Oaks Blvd, Thousand Oaks, Ca 91362



# Urban Planning of Thousand Oaks Civic Arts Plaza

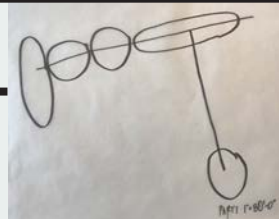


*Direct Community Map*

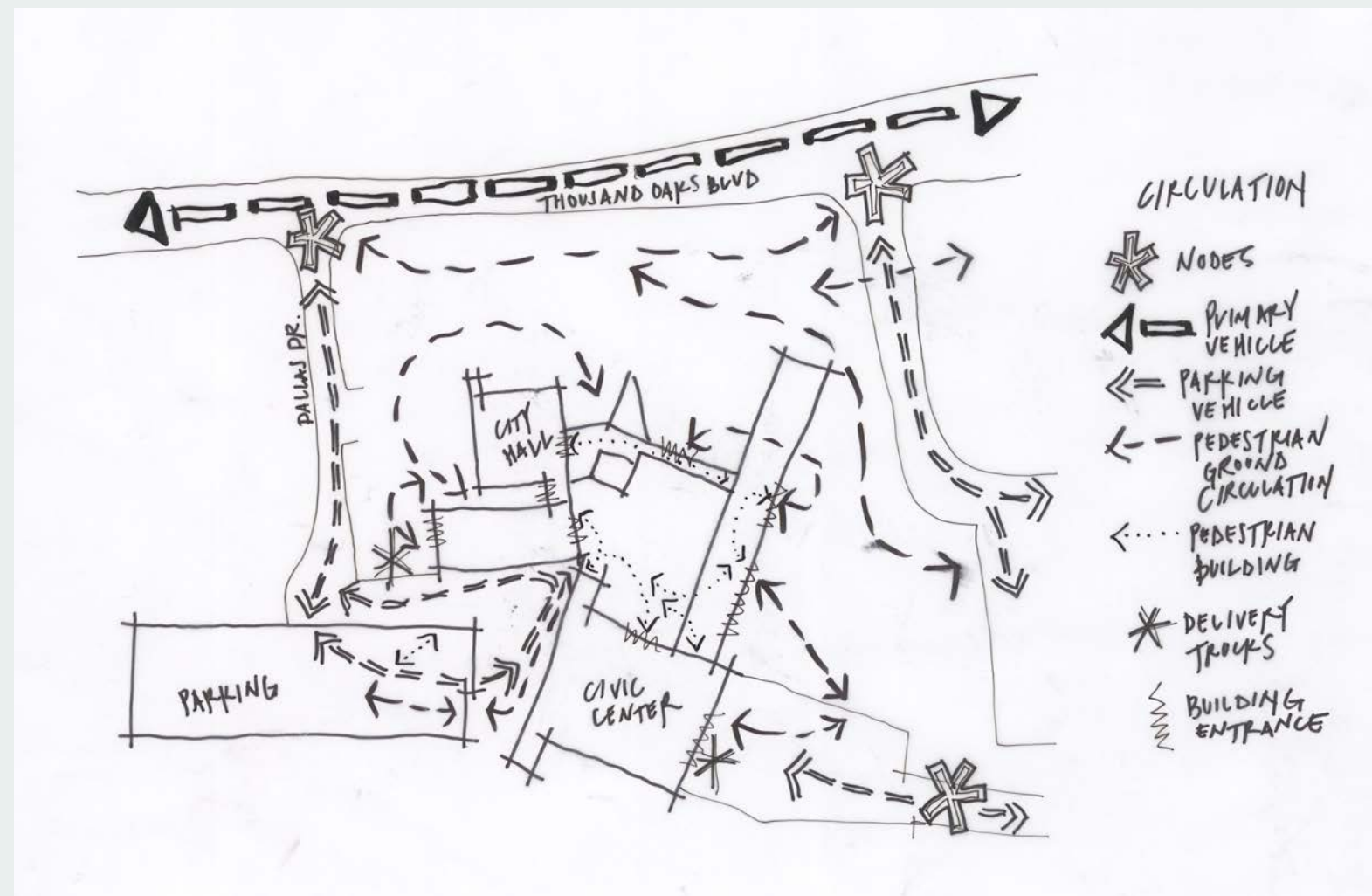


*Civic Center Locations*





# Urban Planning of Thousand Oaks Civic Arts Plaza



South View Of Lakes Parking Lot



South View Of Plaza Landscape



Aerial View Of Front Of Civic Building



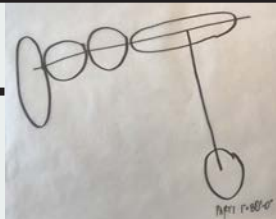
Entire Site Lakes Dr to Dallas Dr











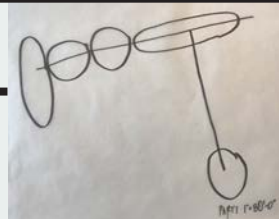
# Urban Planning of Thousand Oaks Civic Arts Plaza











# Urban Planning of Thousand Oaks Civic Arts Plaza



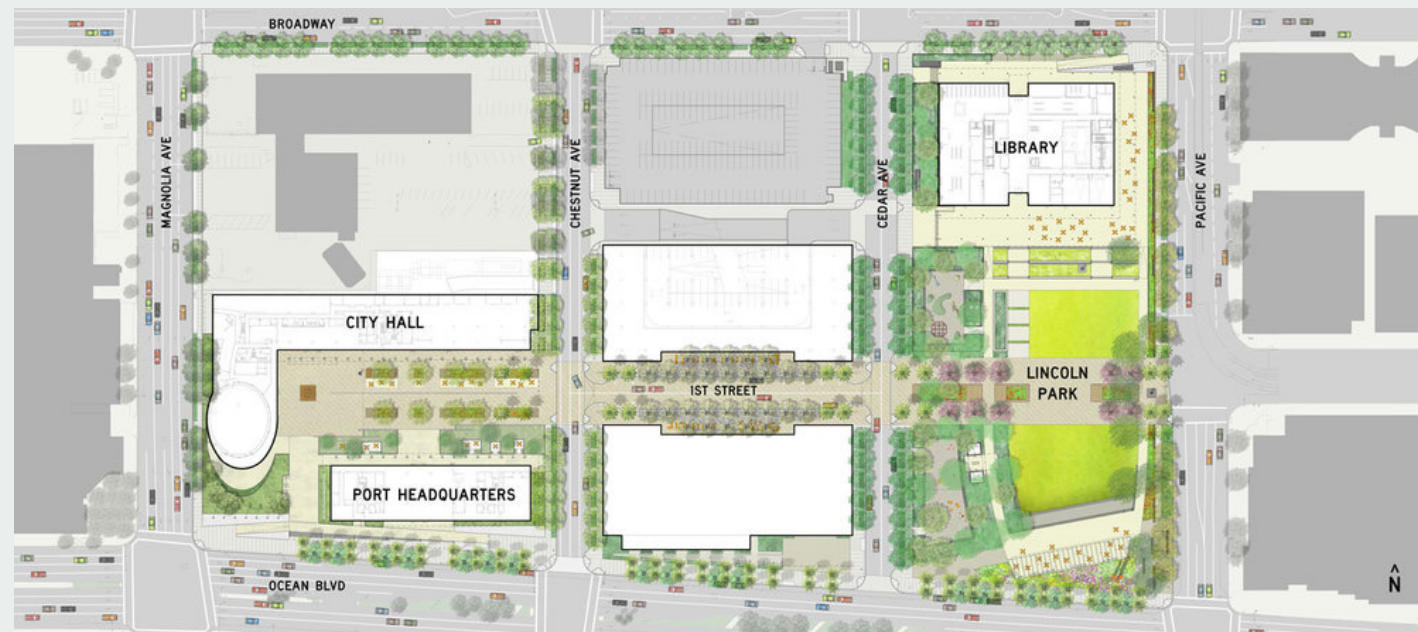
Site Map With Trees and Elevations

Scale: 1"=80'-0"





# Urban Planning of Thousand Oaks Civic Arts Plaza

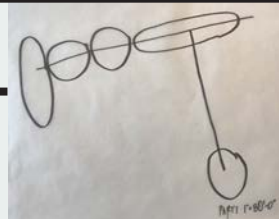


*The Long Beach Civic Center Master Plan revitalizes 22 acres of downtown Long Beach by creating a new, vibrant mixed-use district that includes a City Hall, Main Library, Port Headquarters and the reactivation of Historic Lincoln Park.*

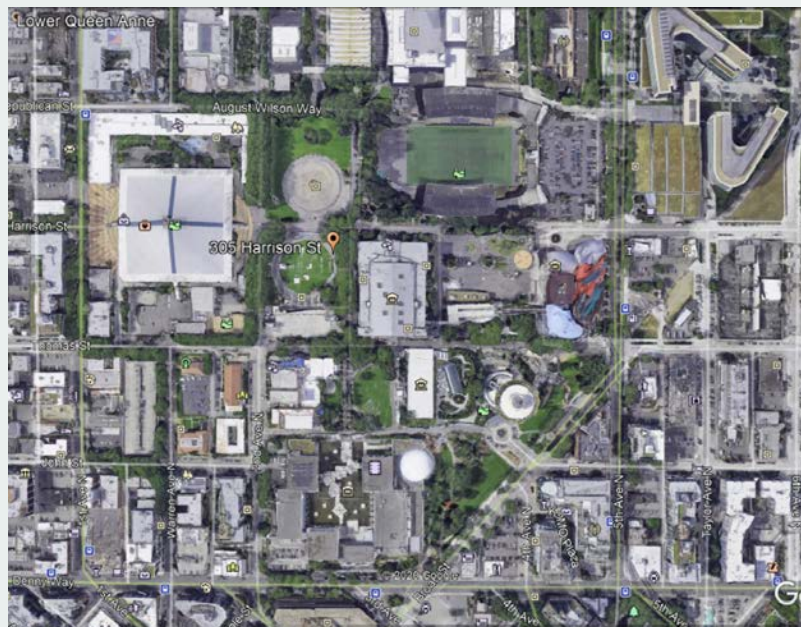
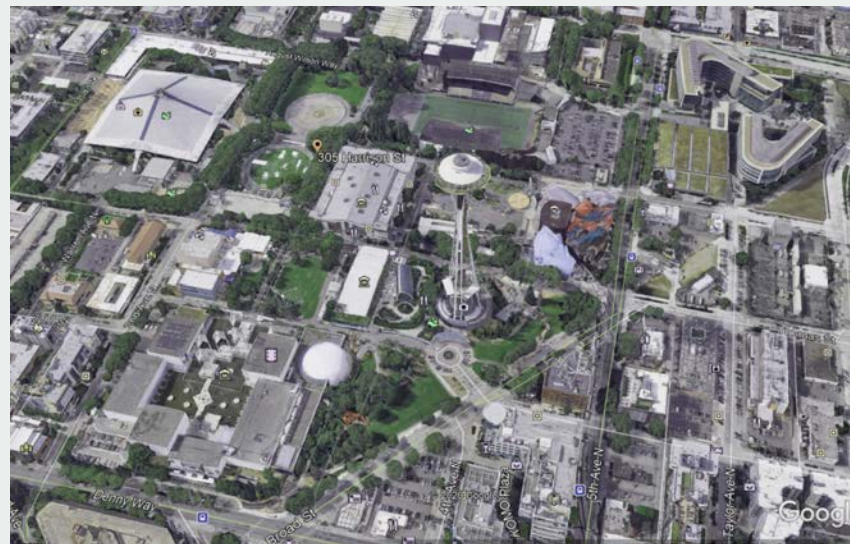
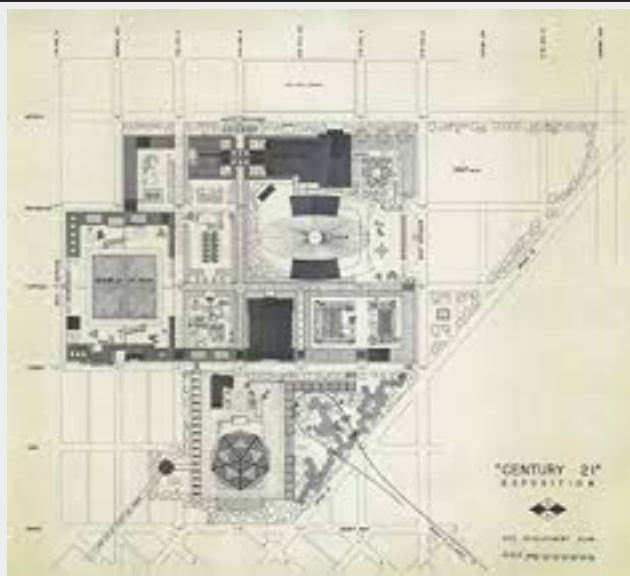


*Case Study - Long Beach Master Plan - California*





# Urban Planning of Thousand Oaks Civic Arts Plaza



*The Seattle Center Century 21 Master Plan guides the 74 acre campus into a primary destination in Seattle by unifying open space and connecting the center to*

*sustainable construction with the unique understanding of urban design issues, impacting multi purpose public centers with infrastructure, landscaping, traffic and pedestrian circulation, surrounding neighborhoods and sustainability goals.*



*Case Study - Seattle Center - Seattle, Washington*



# Urban Planning of Thousand Oaks Civic Arts Plaza

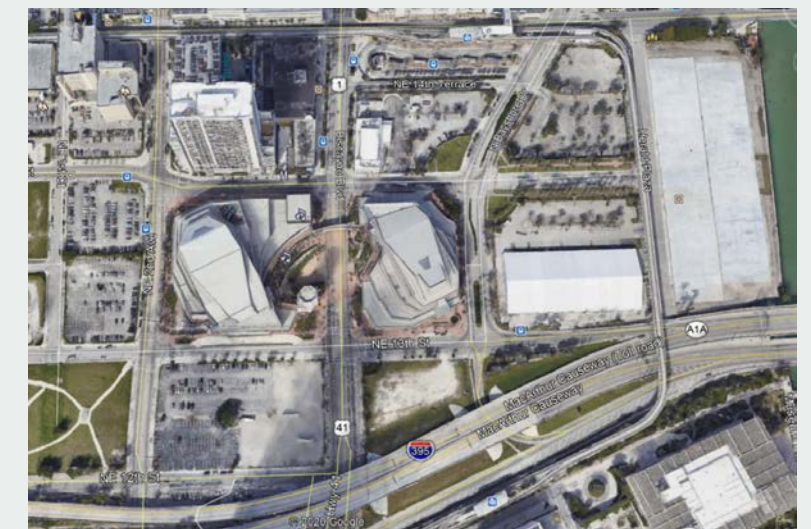


- 1 – Canvas Condominium
- 2 – Publix Supermarket
- 3 – Adrienne Arsht Center
- 4 – Metro Mover Station
- 5 – Miami World Center
- 6 – American Airlines Arena
- 7 – Perez Art Museum

- 8 – Phillip and Patricia Frost Museum of Science
- 9 – Brightline Miami Central Station
- 10 – Miami Dade College



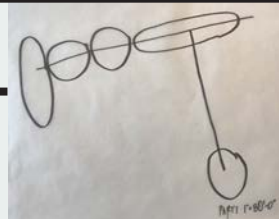
*The Arsht Center For Performing Arts is in a water front, science and art community. The Arsht Center is one of the largest performing arts centers in the United States. This arts center's decorative paving in the street, appeals to street traffic slowing down on lookers with the invitation to visit the site. This paseo drive*



*infront of the Arsht Center compares to the paving design suggested for blue and gray waves placed at Thousand Oaks Paseo on the Boulevard.*

*Arsht Center For Performing Arts - Miami, Florida*





# Urban Planning of Thousand Oaks Civic Arts Plaza



*Elmhurst Community Library was chosen for the architectural glass facade. The library's Z-shaped massing of Community Park on Broadway, visually opening up a new Learning Garden to a stand of mature oaks at the urban block interior. The building integrates inside and outside by extending the streetscape through a main circulation spine that passes through its transparent center, linking together 13,000 sf of landscaped grounds.*

*Elmhurst Community Library - Queens, New York*



# Urban Planning of Thousand Oaks Civic Arts Plaza



*Steel Bridge, Austin TX Electrical Plant*

*Kid Park  
with built in  
seat benches*

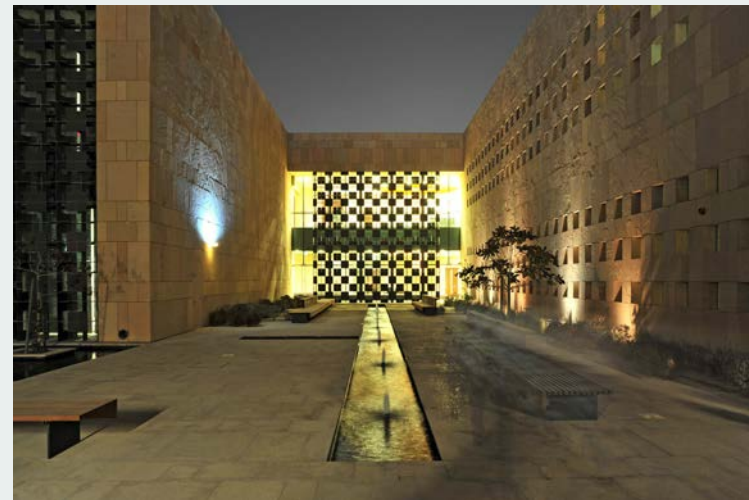


*Directional Signage at  
bottom of bridge in central  
fountain location*

*Alhambra Garden Fountains  
Granada Spain*



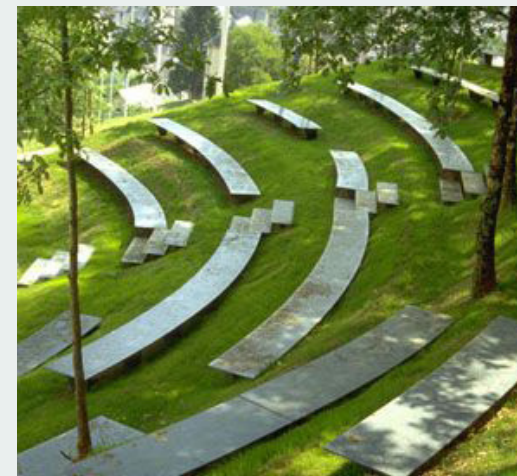
*Water Fountain In Courtyard Entry  
By Richard Lorreteta*



*Roberto Burle Marx  
New York Botanical Gardens*

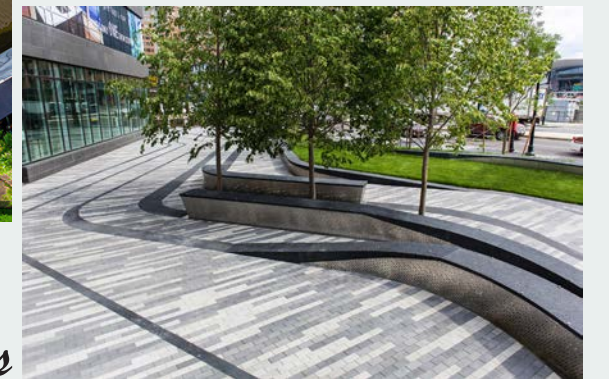


*Curving Seat Benches*



*Amphitheater Seating  
Built Into Slope*

*Pedestrian Street Bollards*

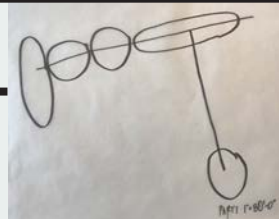


*Glass Art House*

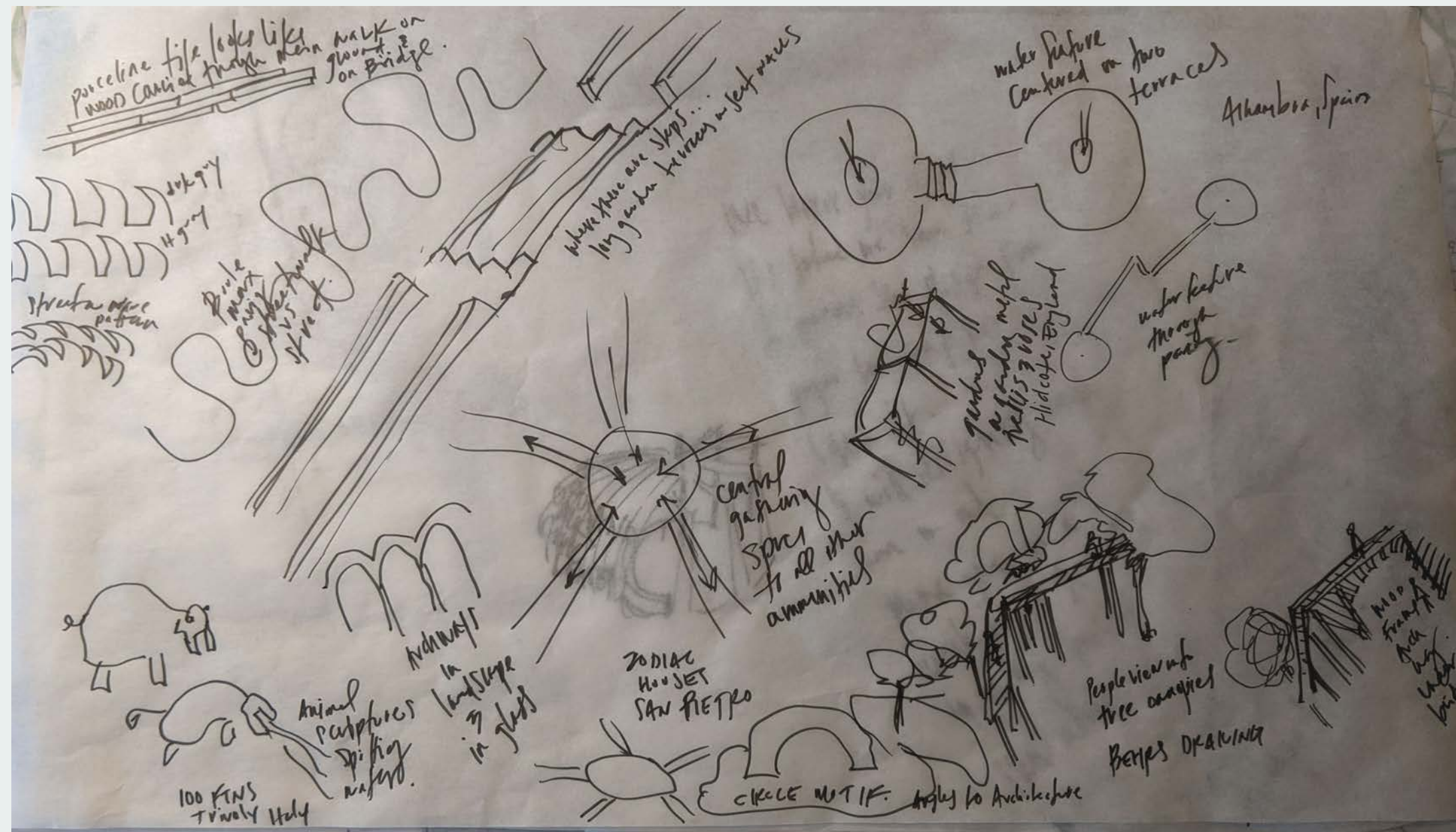


*Site Influences*





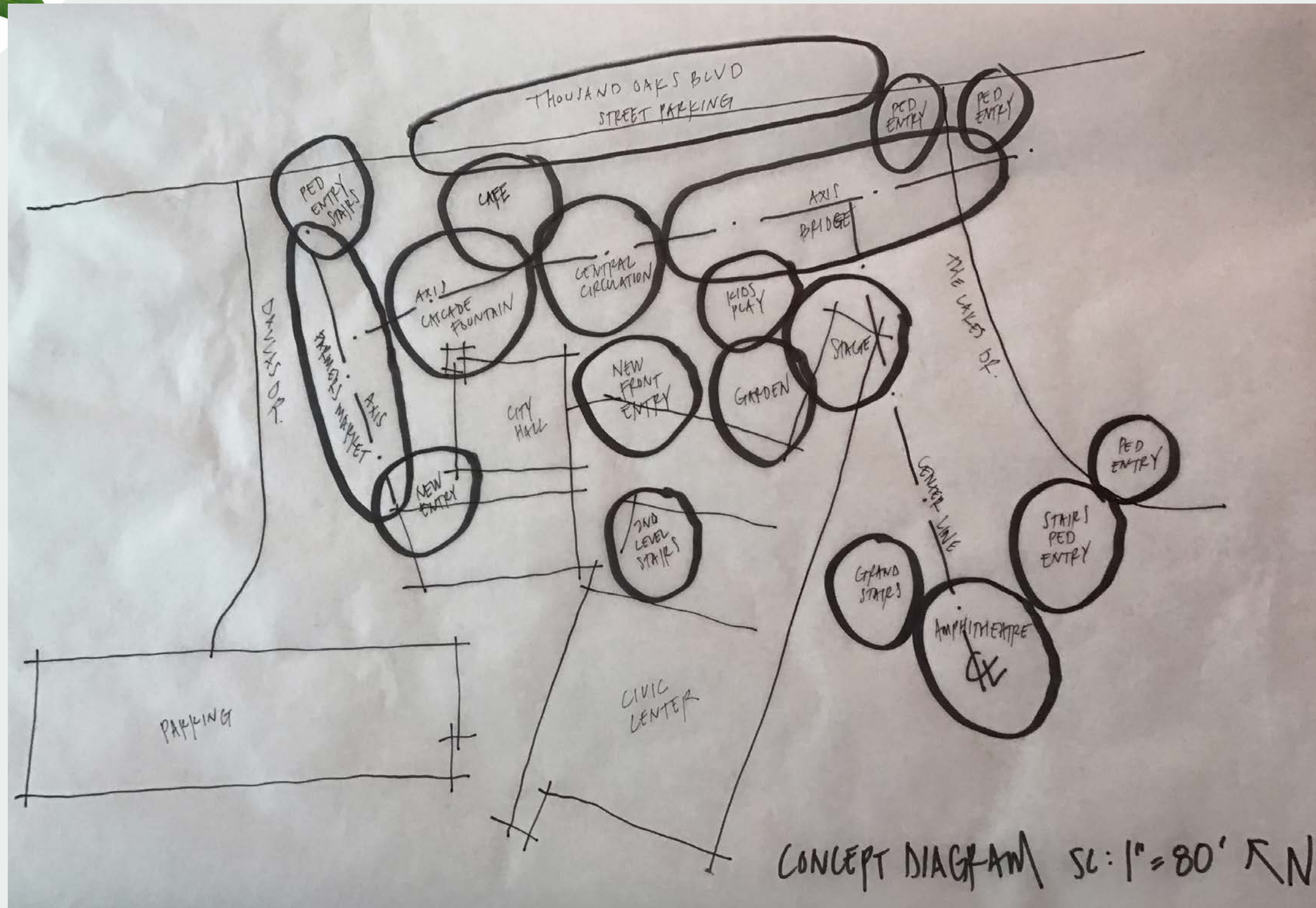
# Urban Planning of Thousand Oaks Civic Arts Plaza



Design Sketches



# Urban Planning of Thousand Oaks Civic Arts Plaza

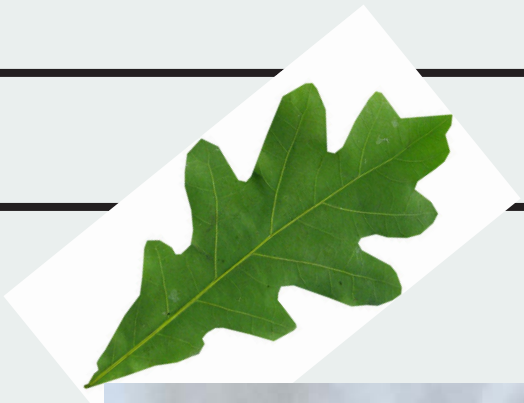


Design Concept Diagram

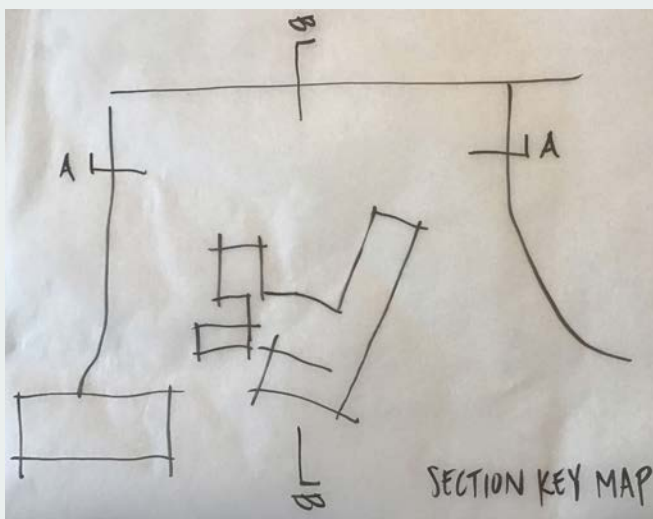
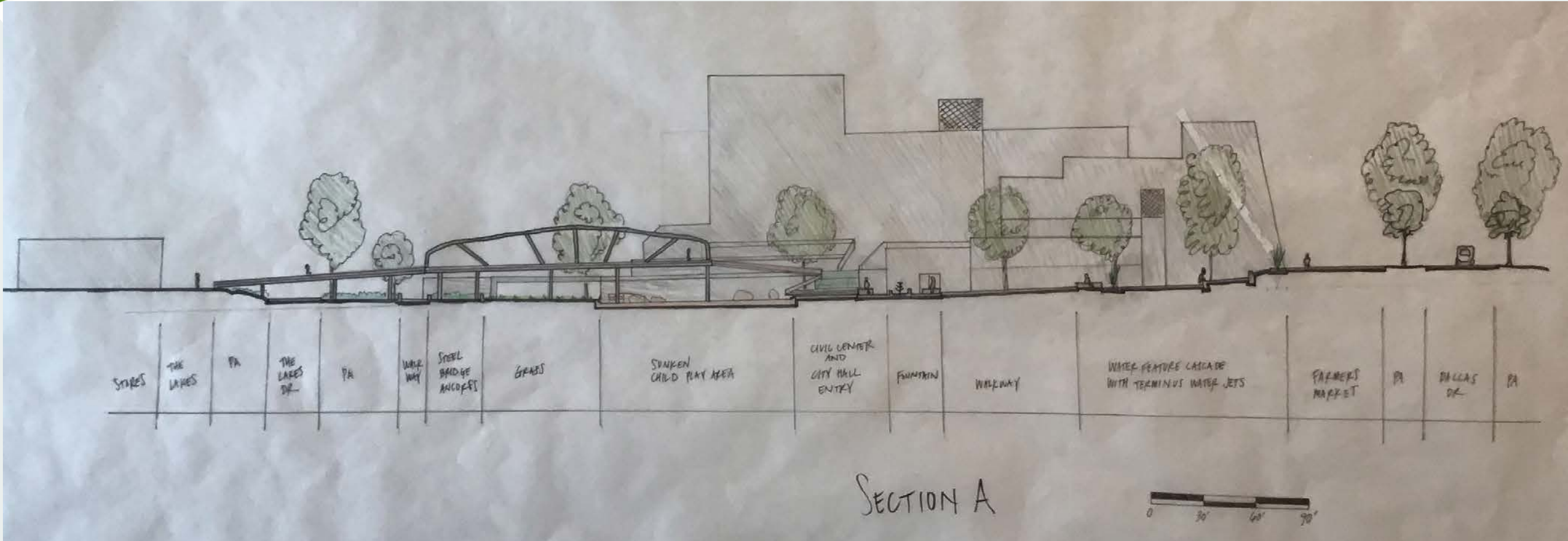






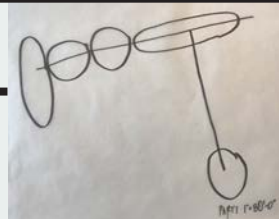


# Urban Planning of Thousand Oaks Civic Arts Plaza

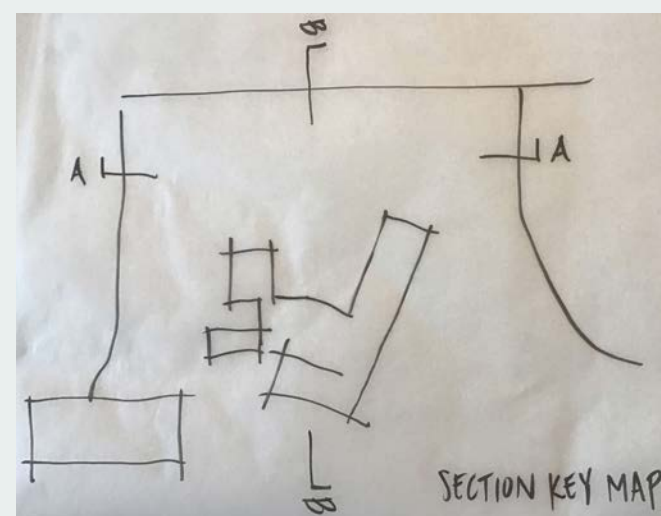


Section A





# Urban Planning of Thousand Oaks Civic Arts Plaza



*Section B*

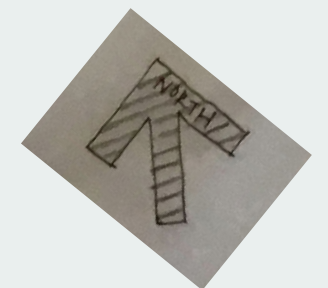


# Urban Planning of Thousand Oaks Civic Arts Plaza

*Legend:*

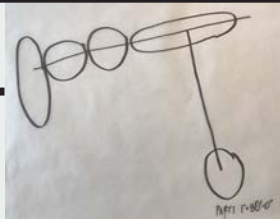
1. Central Fountain
2. Tiered Fountain
3. Farmers Market
4. City Hall Entry
5. Civic Center Entry
6. Bridge
7. Garden
8. Stage
9. Exercise Platform
10. Picnic Benches
11. Amphitheater
12. Pedestrian Access
13. Paseo Wave Paving In Street
14. Plaza Entry Sign Pergola
15. Cafe
16. Art Kiosk
17. Kids Play With Lion Fountain
18. Bollards For Valet

30 90  
0 60 120  
Scale Bar:





*Thousand Oaks Civic Center Site Plan*






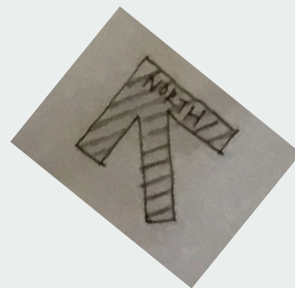
# Urban Planning of Thousand Oaks Civic Arts Plaza



  *Hardscape*

 *Softscape*

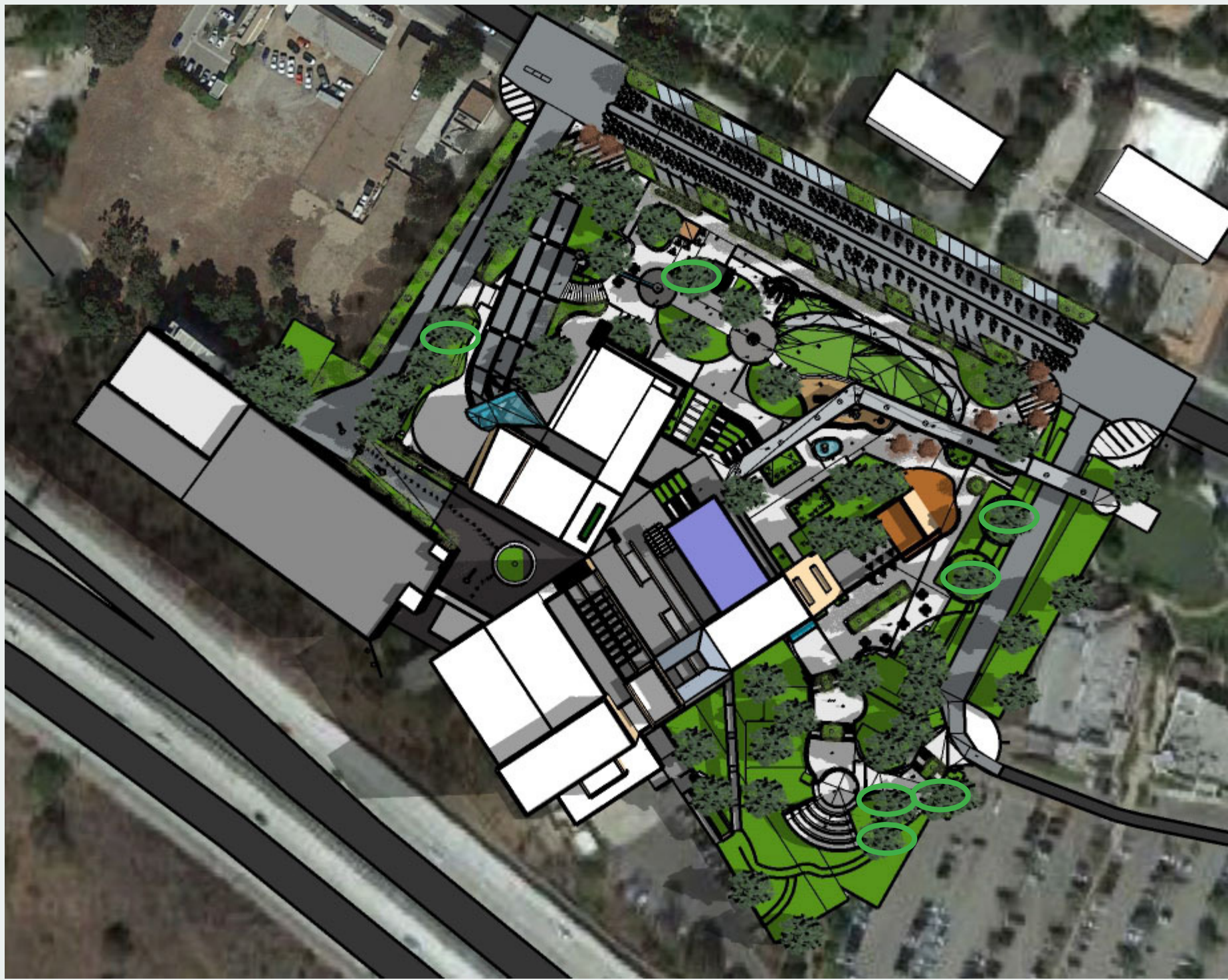
30 90  
0 60 120  
Scale Bar:



*Site Plan With Hardscape Vs. Softscape*

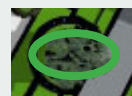


# Urban Planning of Thousand Oaks Civic Arts Plaza



*New And Existing Tree Locations*

*New Trees:*



*New Oaks*



*Chitalpa Trees*

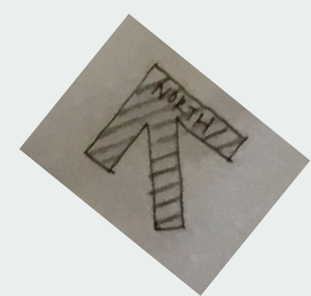
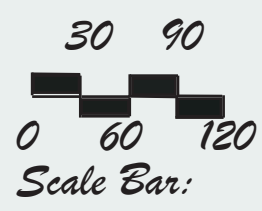


*Liquid Amber Trees*

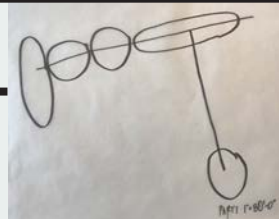
*Existing Trees:*



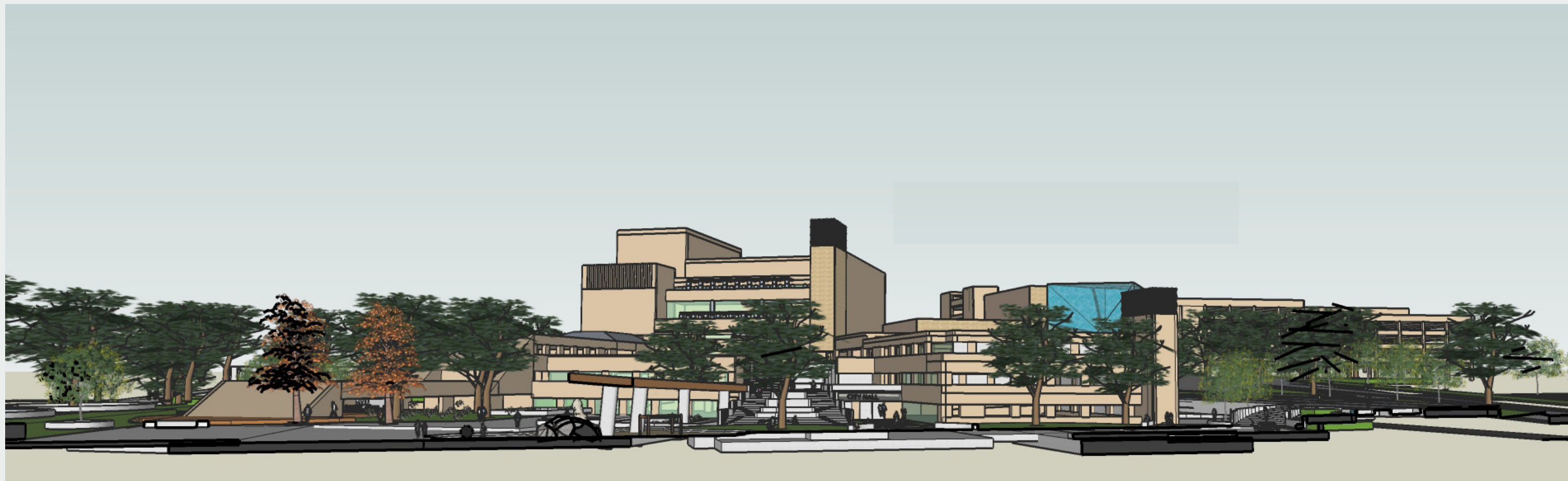
*Oak Trees &  
Sycamore Trees*



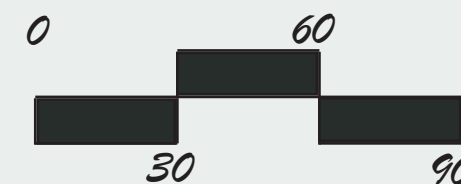
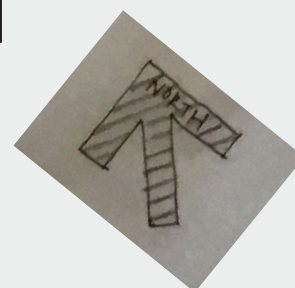




# Urban Planning of Thousand Oaks Civic Arts Plaza



A



Scale Bar:

Key Map:

Section A



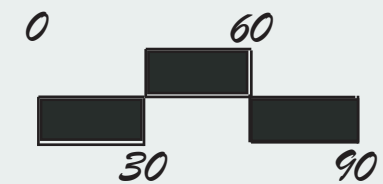
# Urban Planning of Thousand Oaks Civic Arts Plaza



Key Map:

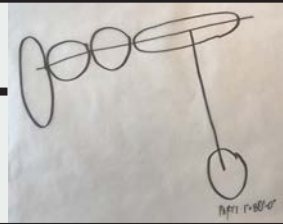
B

Section B



Scale Bar:





# Urban Planning of Thousand Oaks Civic Arts Plaza



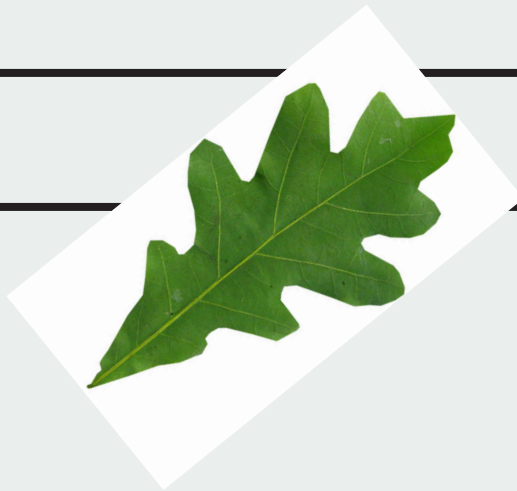
*Sunken Kid Play  
Under 20' High Bridge*



*Tiered Fountain And Picnic  
Benches Adjacent To Cafe*

*Section A Perspective*





# Urban Planning of Thousand Oaks Civic Arts Plaza

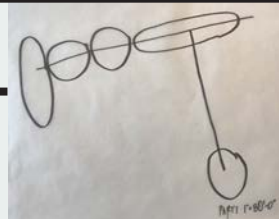
*Central Fountain And Axis To All Paths Of Travel. Most importantly City Hall Entry Or Steps Up To Outdoor Terraced Building.*



*Bridge Overlook To Central Fountain And Pedestrian Axis.*

*Section B Perspective*





# Urban Planning of Thousand Oaks Civic Arts Plaza

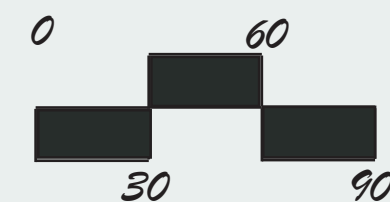


## Legend:

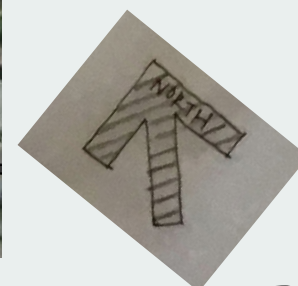
1. Central Fountain
2. Tiered Fountain
3. Farmer's Market
4. Wide Steps Up To Farmer's
5. Entry Signage On Pergola
6. Cafe
7. Art Kiosk
8. Circular Pavers
9. Picnic Benches
10. +18" Seat Walls
11. Street Parking
12. Planting Buffers
13. Bridge Ramp
14. Kid Play Walk Way
15. Grass
16. Movable Seating
17. Sidewalk



Key Map:



Scale Bar:



## Fountain Enlargement



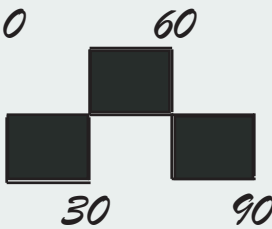
# Urban Planning of Thousand Oaks Civic Arts Plaza



- Legend:*
- 1. Amphitheater Set Into Slope
  - 2. Entry Steps
  - 3. Steps Up To Amphitheater
  - 4. Raised Planter
  - 5. Picnic Benches
  - 6. +18" Seat Walls
  - 7. Wood Stage
  - 8. Wood Exercise Platform
  - 9. Pedestrian Entry To Site
  - 10. Glass Facade



*Key Map:*

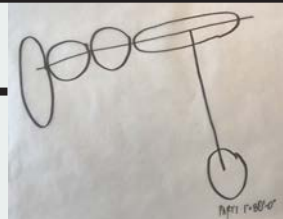


*Scale Bar:*



## Amphitheater Enlargement





# Urban Planning of Thousand Oaks Civic Arts Plaza



*Perspective #1:  
Tiered Fountain Perpendicular  
To Central Fountain And Cafe  
Centered Between Both Fountains.*



*Key Map:*



*Perspective #2: View from Framer's Market*

## Fountain Enlargement Perspectives





# Urban Planning of Thousand Oaks Civic Arts Plaza



*Perspective #1:  
View Out Into Civic Arts Plaza  
Landscape From Terraced  
Amphitheater Built Into Slope.*



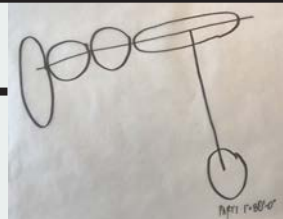
*Key Map:*



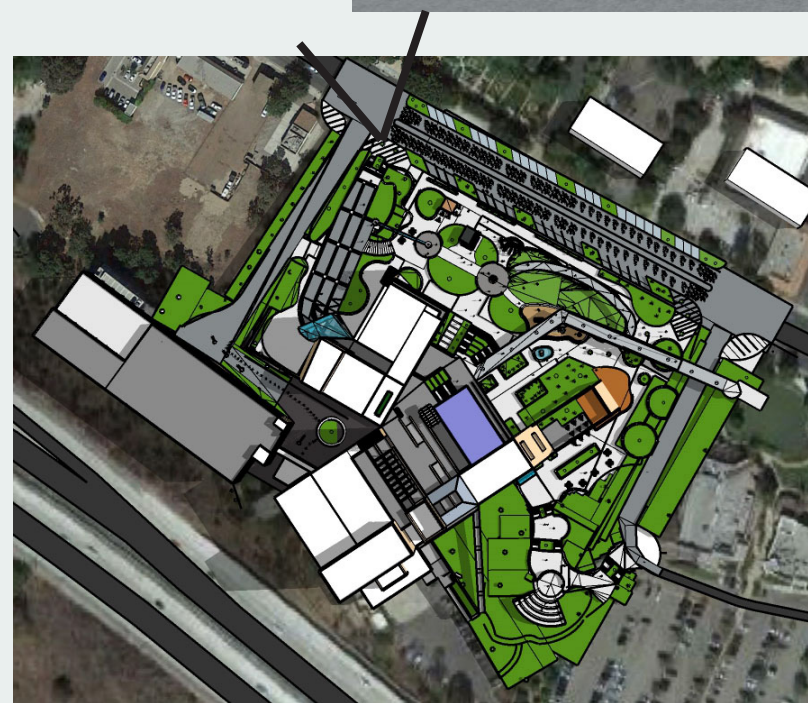
*Perspective #2: Series Of Stairs And Seat Walls Up To Amphitheater*

## Amphitheater Enlargement Perspectives

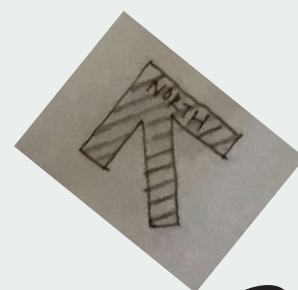




# Urban Planning of Thousand Oaks Civic Arts Plaza



*Large Tree Planter Between Steps Up To Farmer's Market  
And Seat Walls At Planting Edges For Resting Large Numbers Of People*



*Key Map:*

*Dallas Dr. Ped Entry Perspective*

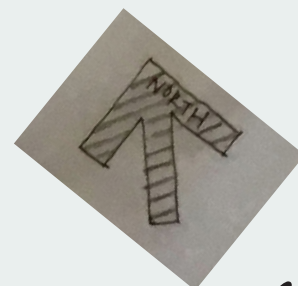


# Urban Planning of Thousand Oaks Civic Arts Plaza



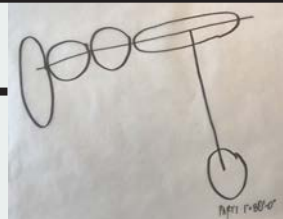
Key Map:

*Seat Walls Around Manured Plantings Beneath Oak Trees With Centered Lion Fountain Accompanying The Sunken Kid's Play*

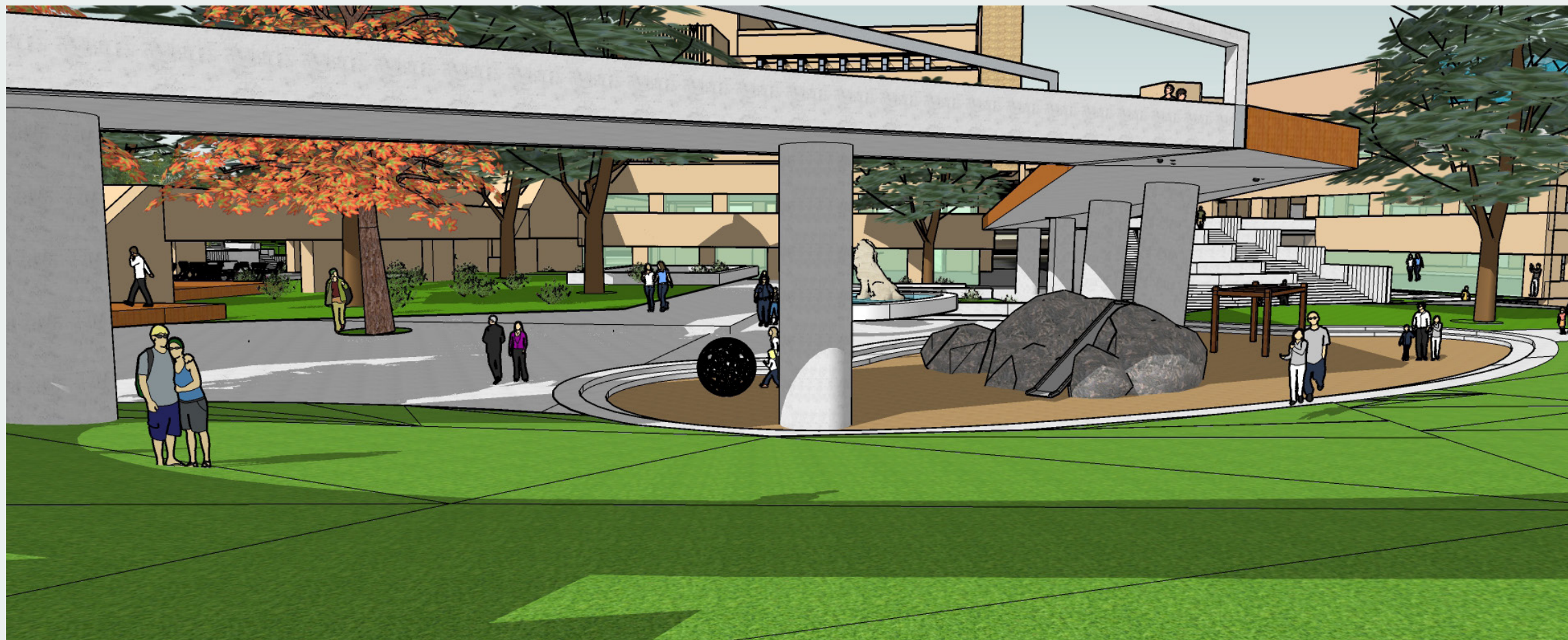


*Lion Fountain And Garden Perspective*

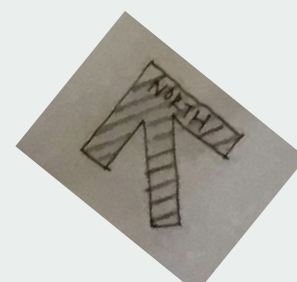




# Urban Planning of Thousand Oaks Civic Arts Plaza



*Below Bridge Sunken Kid's Play With Large Grassy Knoll For Picnics and Kids*



*Key Map:*

*Grassy Knoll And Kid Play Garden Perspective*



# Urban Planning of Thousand Oaks Civic Arts Plaza

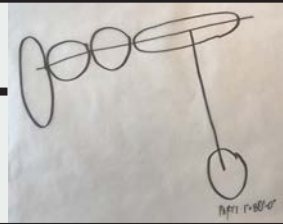


Key Map:

*This Outcrop Of Building Calls For A Stage Below The Oak Trees. Other Side Of Outcrop Is An Exercise Platform With Dual Purpose For More Entertainment. Includes Movable Seating And Planters With Seat Walls*

*Raised Tree Planter, Wood Stage And Movable Seating Perspective*

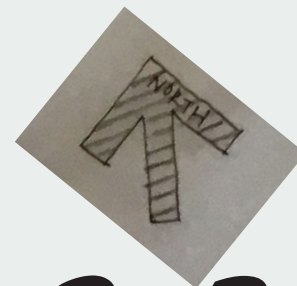




# Urban Planning of Thousand Oaks Civic Arts Plaza



*Corner In The Lakes Drive With Ped Entry And Large Tree Planters With Steps  
On Both sides Up To Built In Amphitheater Into The Slope*

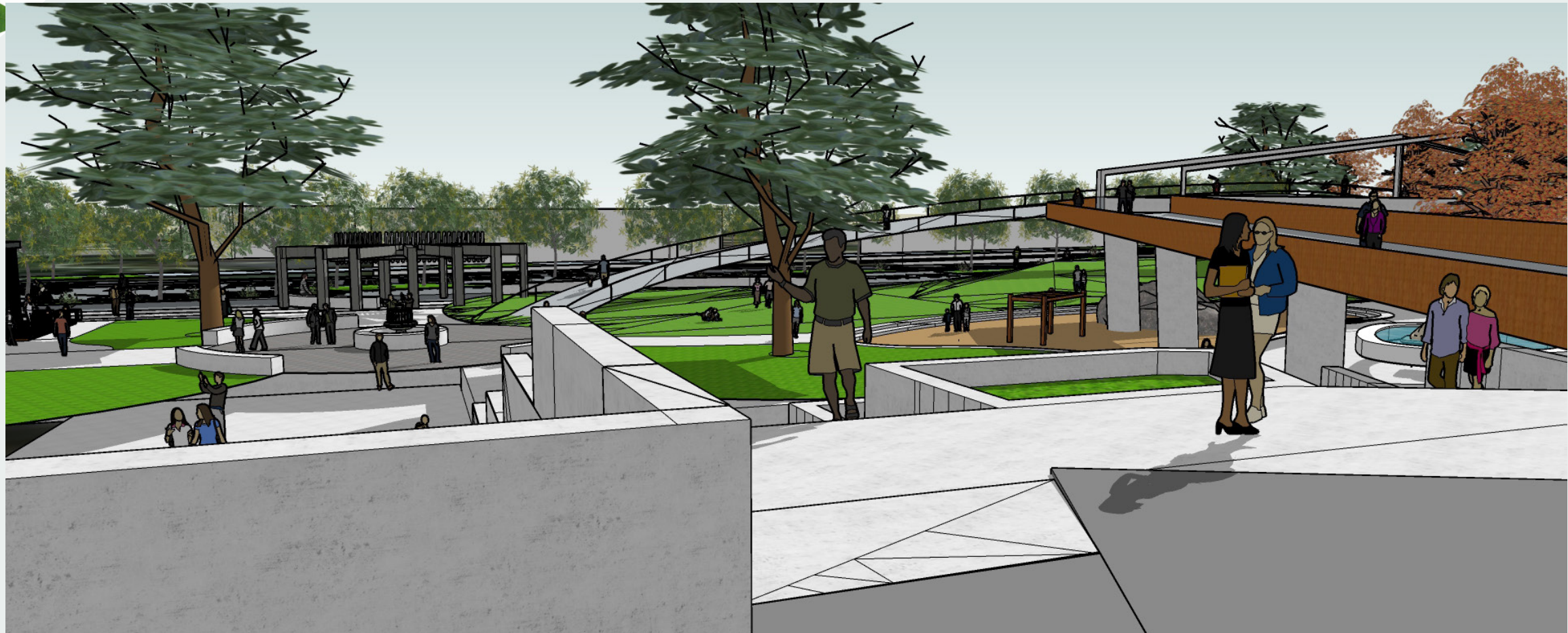


*Key Map:*

*Lakes Dr. Ped Entry And Stairs Up To Amphitheater Perspective*

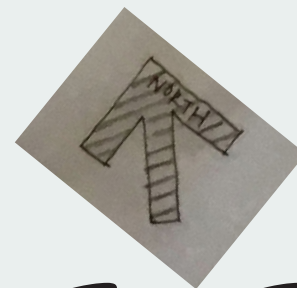


# Urban Planning of Thousand Oaks Civic Arts Plaza



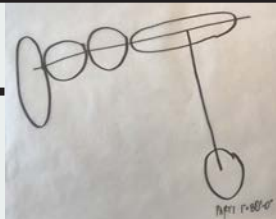
Key Map:

*View Out From First Terraced Floor To Exterior Of Building.  
View Into Civic Center Paseo*

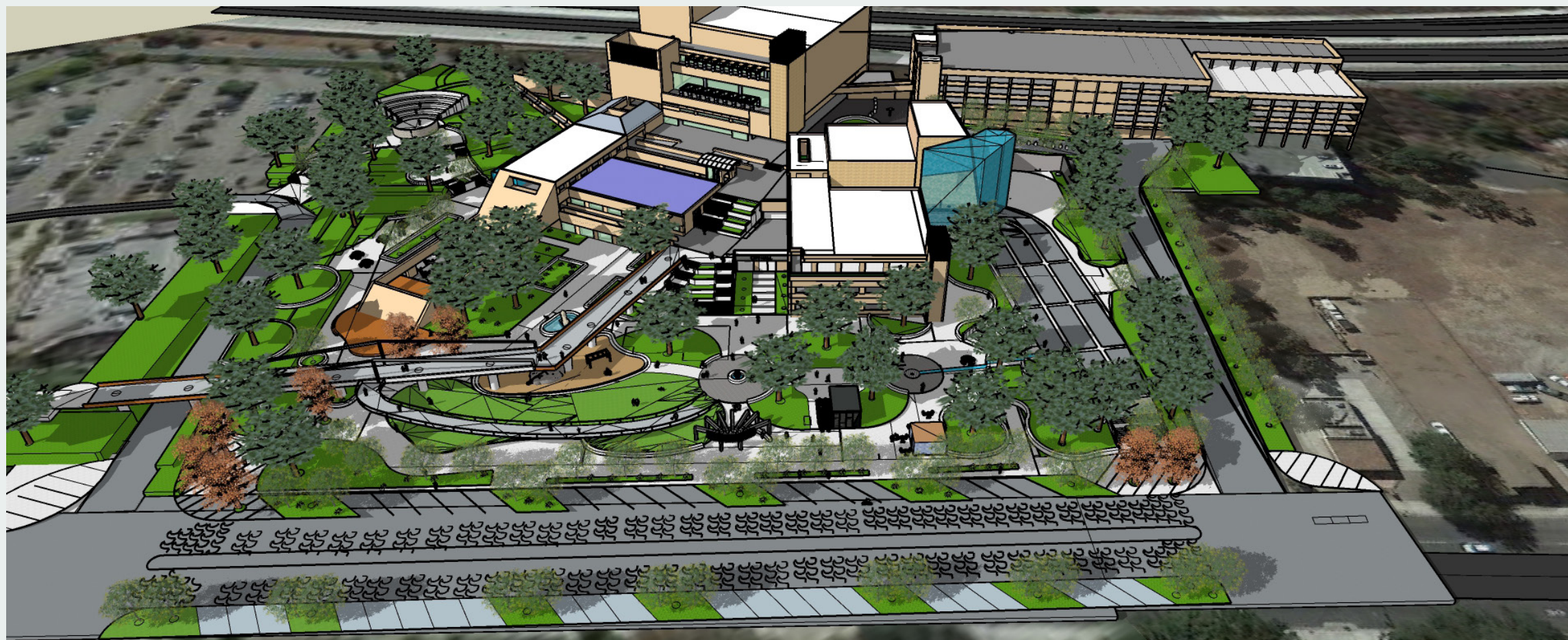


*View From First Story of Civic Center Terraced Building Perspective*



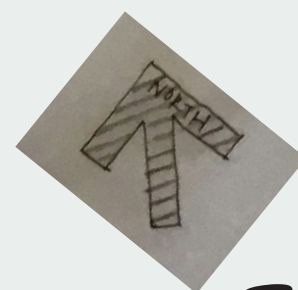


# Urban Planning of Thousand Oaks Civic Arts Plaza



Key Map:

Aerial View From Thousand Oaks Blvd. And The Entire Landscape



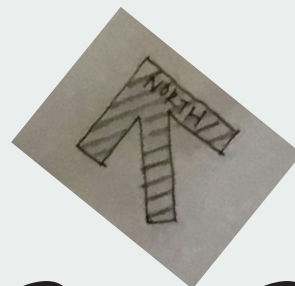
Thousand Oaks Blvd. Aerial View Perspective



# Urban Planning of Thousand Oaks Civic Arts Plaza



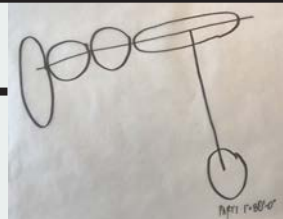
*Large 3'x3' Paving Square In Pattern For Farmer's Market Location With Glass Facade On City Hall Secondary Entry*



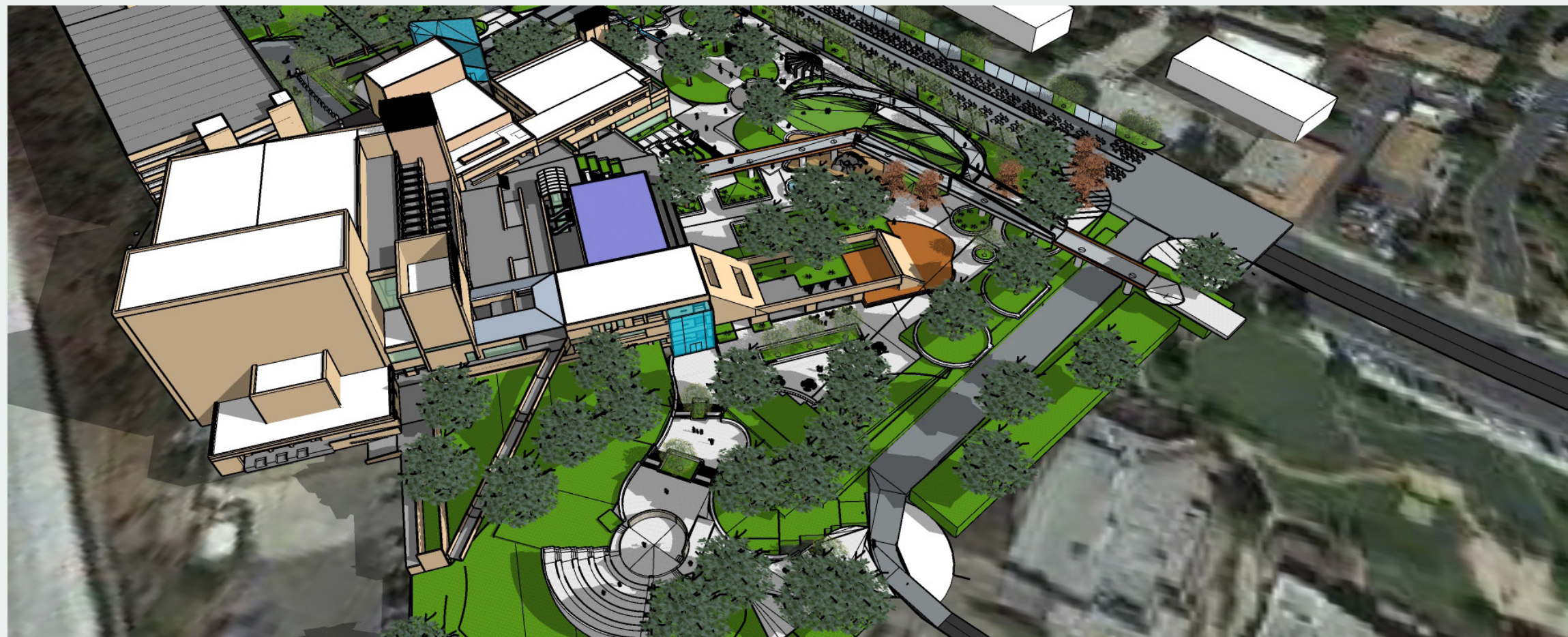
*Key Map:*

*Dallas Dr And Farmer's Market Aerial View Perspective*



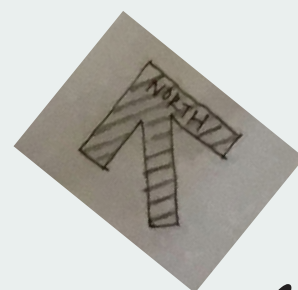


# Urban Planning of Thousand Oaks Civic Arts Plaza



Key Map:

*Amphitheater Aerial View With Bridge Connection To The Lakes*



*Lakes Dr And Amphitheater Aerial View Perspective*



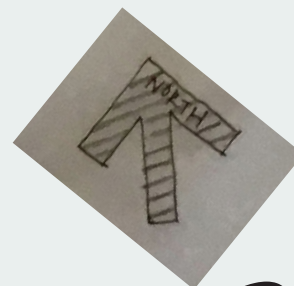
# Urban Planning of Thousand Oaks Civic Arts Plaza



*Pedestrian Bollards Drive Vehicles Up The Drive Way, Only One Direction, To Exit Through The Parking Structure, Arrows In Paving*

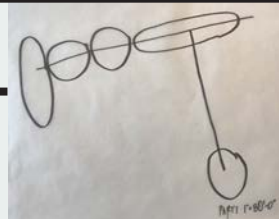


*Key Map:*

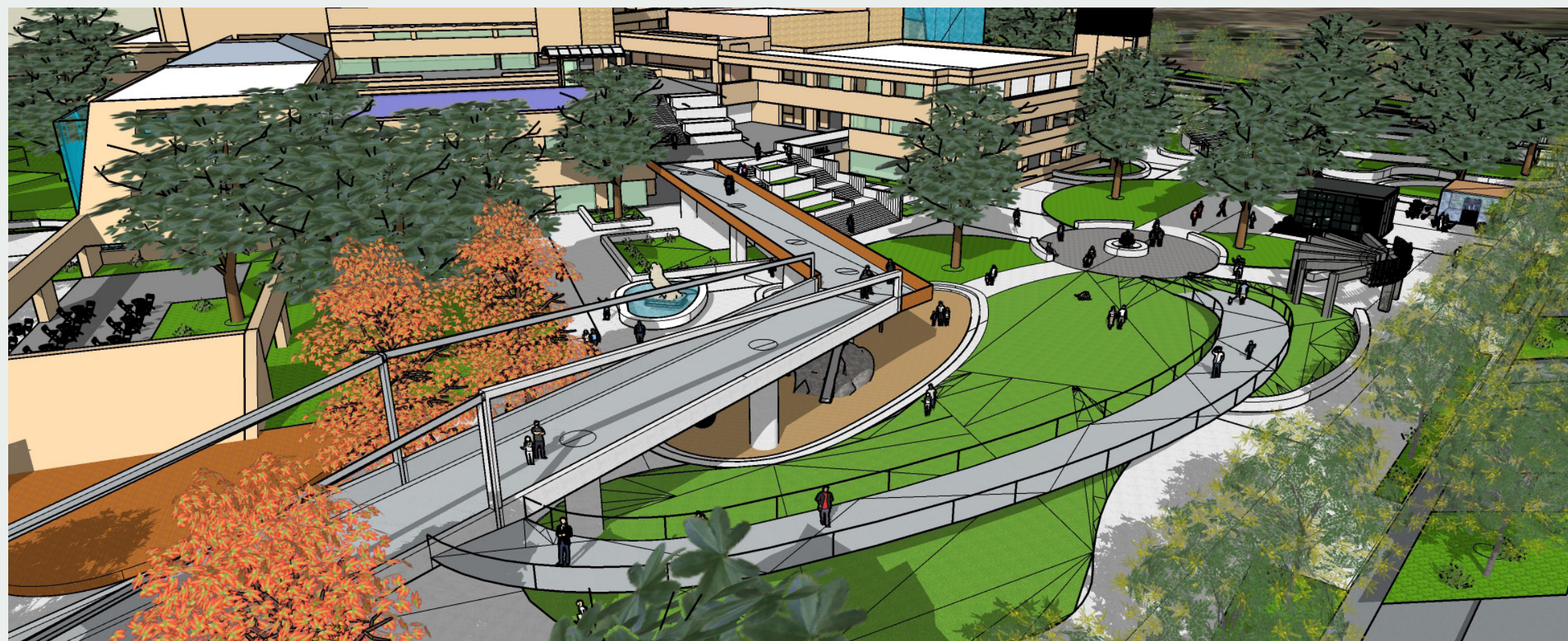


*Dallas Dr And Valet Parking Bollards Perspective*





# Urban Planning of Thousand Oaks Civic Arts Plaza

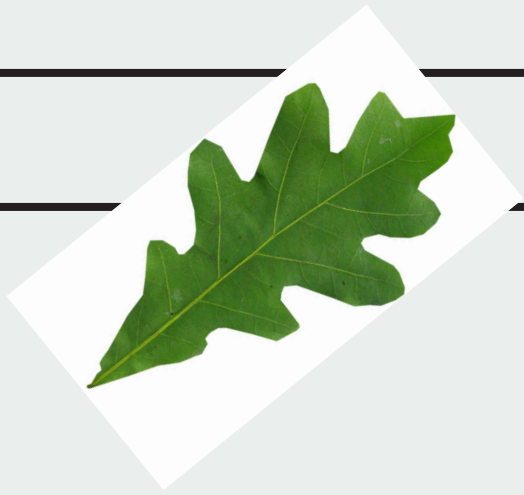


*Aerial View Of Bridge Connection To Top Of First Flight Of Terraced Steps.  
Bridge Is 20 Feet High For 200 Feet Long With 20 Foot High Steel Trusses.  
Both Sides Of 200 Foot Long. 20 Foot High Bridge Connect To 14 Foot Height  
At Building First Floor Terrace And The Lakes Center.*

*Key Map:*

*20' High Bridge Overview Aerial Perspective*





# Urban Planning of Thousand Oaks Civic Arts Plaza

*Perpendicular  
Design Axis With  
Slight  
Farmer's  
Market  
Directional  
Change Parrallel  
To West Building  
Angled Facade*

